

Ampeg Opto Comp Analog Optical Compressor



Ampeg Opto Comp Analog Optical Compressor User Guide

[Home](#) » [ampeg](#) » Ampeg Opto Comp Analog Optical Compressor User Guide 

Contents

- [1 Ampeg Opto Comp Analog Optical Compressor](#)
- [2 Product Information](#)
- [3 Product Usage Instructions](#)
- [4 What's in the Box](#)
- [5 Hookup Diagrams](#)
- [6 PA/Recording Setup](#)
- [7 Front, Rear, Side and Bottom Panel Descriptions](#)
- [8 Getting Started](#)
- [9 WARRANTY AND SUPPORT](#)
- [10 FAQ](#)
- [11 Documents / Resources](#)
 - [11.1 References](#)



Ampeg Opto Comp Analog Optical Compressor



Product Information

Specifications

- Signal-to-Noise Ratio (100 Hz @ 1.00V RMS)
- Maximum Gain: 82 dB +14 dB
- Power Requirements:
 - Internal: 9V Battery
 - External: 9V DC, 25mA
- Size (H x W x D): 2.2 x 2.6 x 4.5 in / 56 x 66 x 114 mm
- Weight: 0.6 lb / 0.3 kg

Product Usage Instructions

Getting Started

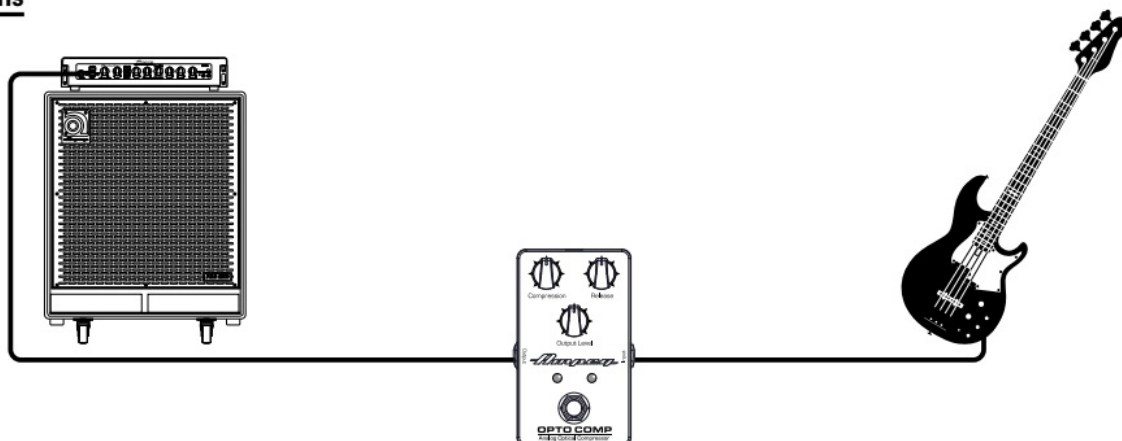
1. Read and understand the included Important Safety Instructions.
2. Make all initial connections with the power switches OFF on all equipment. Ensure Master Volume, Level, and Gain controls are at minimum.
3. Insert a 9V battery or connect an optional AC/DC power supply as per voltage specifications on the rear panel.
4. Connect an instrument to the Input jack using a 1/4 (shielded) instrument cable.
5. While playing the instrument, adjust the Output Level knob to the desired level.
6. Adjust the Compression and Release knobs to your preference.

What's in the Box

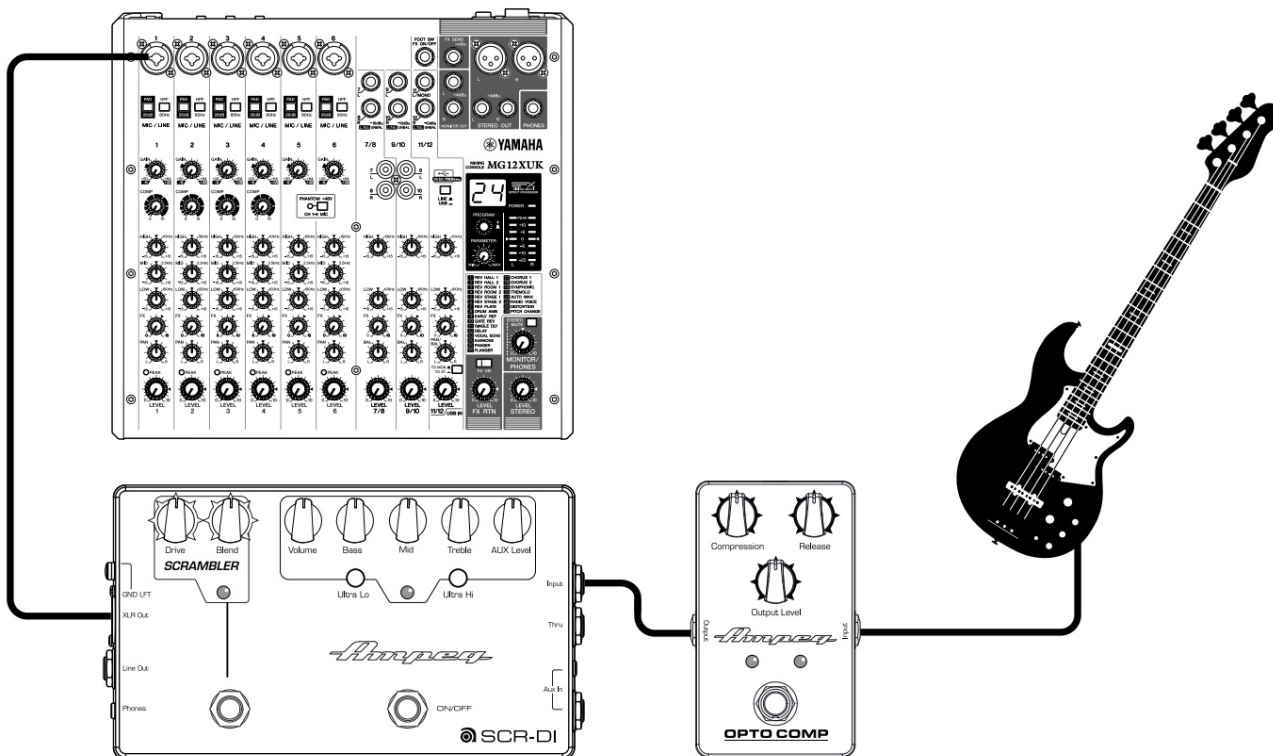
Hookup Diagrams

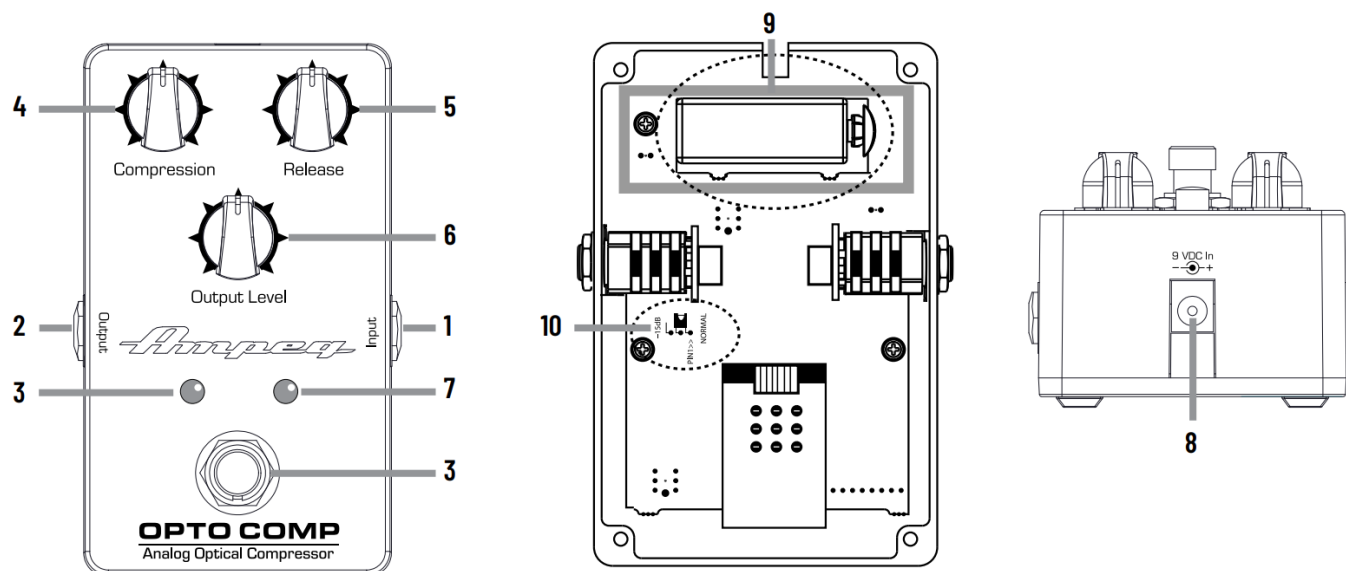
Hookup Diagrams

Standard
Setup



PA/Recording Setup





Front, Rear, Side and Bottom Panel Descriptions

1. Input: Connect a passive or active instrument to this Input jack.
2. Output: Feeds the signal to an external power amplifier, mixer, or recording setup.
3. On/Off Switch: Turns the pedal on/off. The LED indicates the on/off status.
4. Compression: Controls the overall amount of compression applied to a signal.
5. Release: Determines how long it takes for the compressor to end gain reduction.
6. Output Level: Adjusts the overall output level.
7. Gain Reduction LED: This LED increases in brightness as gain reduction increases.
8. Power: Input socket for optional AC/DC power supply.
9. Battery (not included): Provides 9V of power (accessible by removing the four screws on the bottom panel).
10. Pad: Reduces input level by 15 dB.

Getting Started

1. Read and understand the included "Important Safety Instructions."
2. Make all initial connections with the power switches OFF on all equipment. Make sure the Master Volume, Level and Gain controls are all the way down.
3. Insert a 9V battery or connect an optional AC/DC power supply. The Opto Comp Compressor may accept the appropriate voltage as indicated on the rear panel.
4. Connect an instrument to the Input jack with a 1/4" (shielded) instrument cable.
5. While playing the instrument, adjust the Output Level knob to the preferred level.
6. Adjust the Compression and Release knobs to taste.

WARRANTY AND SUPPORT

Visit WWW.AMPEG.COM to.....

1. Identify warranty coverage provided in your local market. Please keep your sales receipt in a safe place.
2. retrieve a full-version, printable OWNER'S MANUAL (English only) for your product.

3. REGISTER your product.
4. CONTACT Technical Support, or call [818-575-3600](tel:818-575-3600).

www.ampeg.com

Yamaha Guitar Group, Inc.

26580 Agoura Road, Calabasas, CA 91302-1921 USA Part No. 40-00-0433 Rev. A



© 2019 Yamaha Guitar Group, Inc. All rights reserved.


Ampeg and the Ampeg logo are trademarks or registered trademarks of Yamaha Guitar Group, Inc. in the U.S. and/or other jurisdictions.

FAQ

Q: Where can I find warranty and support information?

A: Visit www.ampeg.com for warranty coverage details, owner's manual, product registration, or technical support. You can also contact me at [818-575-3600](tel:818-575-3600).

Documents / Resources

	Ampeg Opto Comp Analog Optical Compressor [pdf] User Guide Opto Comp Analog Optical Compressor, Comp Analog Optical Compressor, Analog Optical Compressor, Optical Compressor, Compressor
---	--

References

-  [Ampeg](#)
- [User Manual](#)

[Manuals+](#), [Privacy Policy](#)

This website is an independent publication and is neither affiliated with nor endorsed by any of the trademark owners. The "Bluetooth®" word mark and logos are registered trademarks owned by Bluetooth SIG, Inc. The "Wi-Fi®" word mark and logos are registered trademarks owned by the Wi-Fi Alliance. Any use of these marks on this website does not imply any affiliation with or endorsement.