



# AMPTDBU RF Controller User Manual

[Home](#) » [AMP](#) » AMPTDBU RF Controller User Manual 

## AMPTDBU RF Controller User Manual



### Contents

- [1 Declarations](#)
- [2 Fields of Application](#)
- [3 Specifications](#)
- [4 Attention](#)
- [5 Safety Instructions](#)
- [6 System Overview](#)
- [7 P1 Button Instructions](#)
- [8 Button Instructions](#)
- [9 Rechargeable Battery](#)
- [10 Pair / Unpair Remote Control](#)
- [11 Change Motor Direction \(if necessary\)](#)
- [12 Setting the Upper and Lower Limits](#)
- [13 Adjust Limits](#)
- [14 Favorite Position](#)
- [15 Roller Mode and Sheer Mode](#)
- [16 Add or Remove Additional Remote](#)
- [17 Adjust Motor Speed](#)
- [18 Documents / Resources](#)
- [19 Related Posts](#)

### Declarations

## U.S. Radio Frequency FCC Compliance

This device complies with Part 15 of the FCC Rules. Operation is subject to the following two conditions:

1. This device may not cause harmful interference, and
2. This device must accept any interference received, including interference that may cause undesired operation.

This equipment has been tested and found to comply with the limits for a Class B digital device, pursuant to Part 15 of the FCC Rules. These limits are designed to provide reasonable protection against harmful interference in a residential installation. This equipment generates, uses, and can radiate radio frequency energy and, if not installed and used in accordance with the instructions, may cause harmful interference to radio communications. However, there is no guarantee that interference will not occur in a particular installation. If this equipment does cause harmful interference to radio or television reception, which can be determined by turning the equipment off and on, the user is encouraged to try to correct the interference by one or more of the following measures:

- Reorient or relocate the receiving antenna.
- Increase the separation between the equipment and receiver.
- Connect the equipment into an outlet on a circuit different from that to which the receiver is connected.
- Consult the dealer or an experienced radio/TV technician for help.

Any Changes or modifications not expressly approved by the party responsible for compliance could void the user's authority to operate the equipment.

## ISED RSS Warning:

This device complies with Innovation, Science and Economic Development Canada licence-exempt RSS standard(s). Operation is subject to the following two conditions: (1) this device may not cause interference, and (2) this device must accept any interference, including interference that may cause undesired operation of the device.

## Fields of Application

- Cellular/Honeycomb Standard
- Cellular/Honeycomb Skylight
- Cellular/Honeycomb TDBU
- Cellular/Honeycomb Day/Night

## Specifications

**Working temperature:** -10° C ~ +50° C

**Input Voltage:** USB 5V 1A / USB 5V 2A

**Radio Frequency:** 433.92 MHz

**Maximum Running Time:** 6 minutes

## Attention

Never drop, knock, drill or submerge the motor.

Read all safety instructions before installation.

Incorrect installation can lead to serious injury and will void manufacturer's liability and warranty

## **Safety Instructions**

1. Do not expose motor to humid, damp, or extreme temperature conditions.
2. Do not drill into motor.
3. Do not cut the antenna. Keep it clear from metal objects.
4. Do not allow children to play with this device.
5. If the power cable or connector is damaged, do not use.
6. Ensure the correct crown and drive adaptor are used.
7. Ensure the power cable and aerial is clear and protected from moving parts.
8. Cable routed through walls should be properly isolated.
9. Motor is to be mounted in horizontal position only.
10. Before installation, remove unnecessary cords and disable equipment not needed for powered operation.
11. Installation and programming should be performed by a qualified professional. Use or modification outside the scope of these instructions may void warranty

Do not dispose of in general waste.

Please recycle batteries and damaged electrical products appropriately

Please scan QR code to see more AMP™ product information

## **System Overview**

### **Switch Functions**

1. When the Switch is at Location 1, it is Cellular/Honeycomb TDBU and Cellular/Honeycomb Day/Night Shades working mode.
2. When the Switch move to Location ON, it is Cellular/Honeycomb Standard and Cellular/Honeycomb Skylight working mode.
3. The Factory default mode is setting at Location 1.

### **P1 Button Instructions**

#### **1. Test Motor (Wakes and Runs)**

Happening as you press for 1 second

#### **2. Activate Pairing Mode**

Happening as you press for 2 second

#### **3. Sleep Mode**

Happening as you press for 6 seconds

#### **4. Reverse Motor 1 with Motor 2**

Happening as you press for 10 seconds

#### **5. Reset To Factory Settings**

Happening as you press for 14 seconds

## Button Instructions

### Rechargeable Battery

- **Blinking red:**  
Low battery alert
- **Blinking green:**  
Charging in process
- **Solid green:**  
Battery has finished charging

### Essential Settings

The steps in factory mode must be completed to ensure proper operation.

### Pair / Unpair Remote Control

- **a.** Press “P1” button (about 2 sec) on the End Cap as shown until motor jog x1.
- **b.** In the next 10 secs, press and hold Left “Stop” button on the remote control until motor jog x2.

\* Repeat the same procedure to unpair remote contro

### Change Motor Direction (if necessary)

Press Left “Up” or Left “Down” button to check if the shade moves in the desired direction.

If you need to reverse the direction, press and hold (about 2 sec) Left “Up” and “Down” button

\*The operation is only valid when there are no limits.

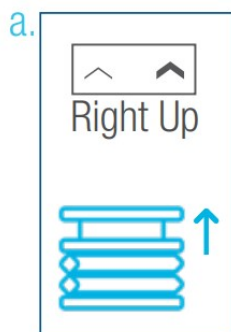
### Setting the Upper and Lower Limits

#### Set Upper Limit

**a.** Press Right “Up” button to raise the Middle Rail, then press Right “Stop” button when it is in the desired upper limit.

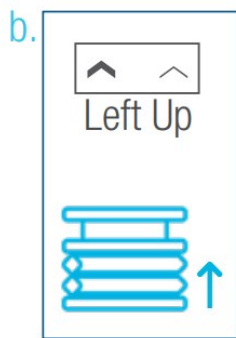
**Action on  
Remote Control**

**Middle Rail  
Response**



**b.** Press Left “Up” button to raise the Bottom Rail, then press Left “Stop” button when it is in the desired upper limit.

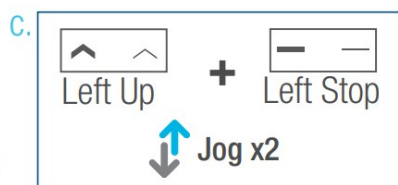
**Action on  
Remote Control**



**Bottom Rail  
Response**

c. Press and hold (about 2 sec) Left “Up” and Left “Stop” buttons simultaneously until motor jog x2.

**Action on  
Remote Control**

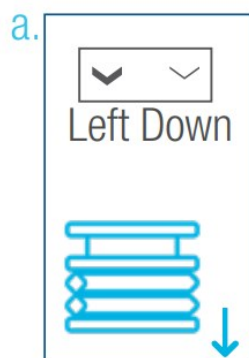


**Motor Response**

### Set Lower Limit

a. Press Left “Down” button to lower the Bottom Rail, then press Left “Stop” button when it is in the desired lower limit.

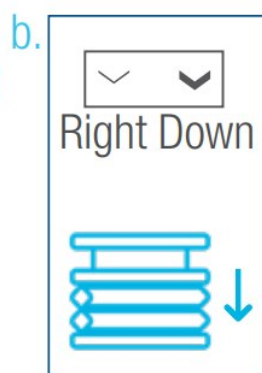
**Action on  
Remote Control**



**Bottom Rail  
Response**

b. Press Right “Down” button to lower the Middle Rail, then press Right “Stop” button when it is in the desired lower limit.

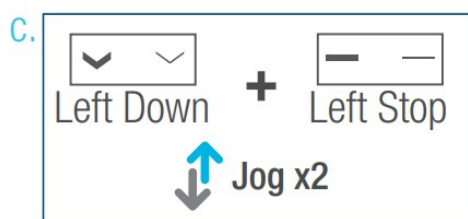
**Action on  
Remote Control**



**Middle Rail  
Response**

c. Press and hold (about 2 sec) Left “Down” and Left “Stop” buttons simultaneously until motor jog x2.

**Action on  
Remote Control**



**Motor Response**

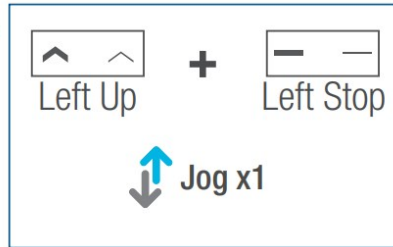
### Adjust Limits

## Adjust the Upper Limit

a. Press and hold (about 5 sec) Left “Up” and Left “Stop” buttons simultaneously until motor jog x1.

Action on  
Remote Control

a.

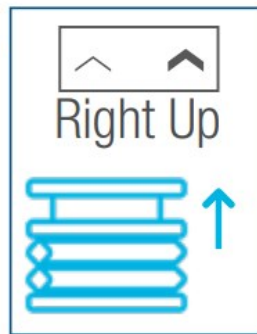


Motor Response

b. Press Right “Up” button to raise the Middle Rail, then press Right “Stop” button when it is in the new desired upper limit.

Action on  
Remote Control

b.

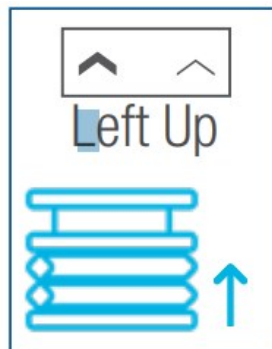


Middle Rail  
Response

c. Press Left “Up” button to raise the Bottom Rail, then press Left “Stop” button when it is in the new desired upper limit.

Action on  
Remote Control

c.



Bottom Rail  
Response

d. Press and hold (about 2 sec) Left “Up” and Left “Stop” buttons simultaneously until motor jog x2.

Action on  
Remote Control

d.



Motor Response

## Adjust the Lower Limit

a. Press and hold (about 5 sec) Left “Down” and Left “Stop” buttons simultaneously until motor jog x1.

Action on  
Remote Control

a.

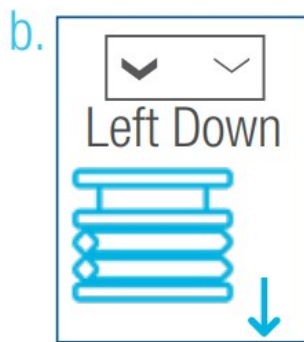


Motor Response

b. Use Left “Down” button to lower the Bottom Rail then press Left “Stop” button when it is in the new desired lower limit.

## Action on Remote Control

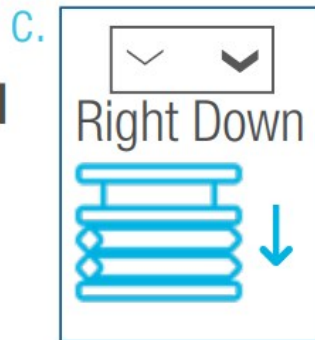
## Bottom Rail Response



c. Press Right “Down” button to lower the Middle Rail, then press Right “Stop” button when it is in the new desired lower limit.

## Action on Remote Control

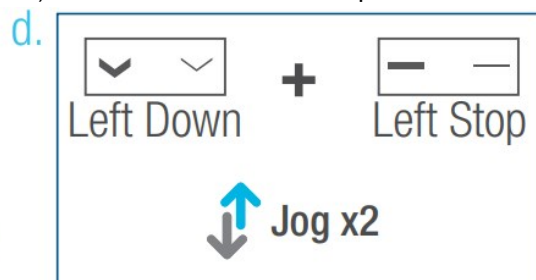
## Middle Rail Response



d. Press and hold (about 2 sec) Left “Down” and Left “Stop” buttons simultaneously until motor jog x2.

## Action on Remote Control

## Motor Response



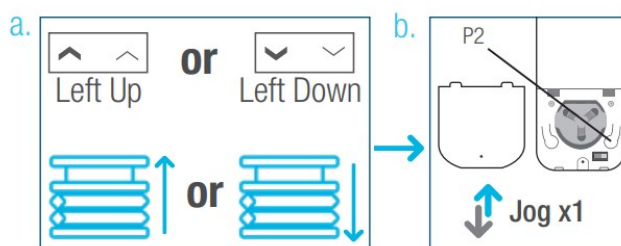
## Favorite Position

### Set Favorite Position

a. Use Left “Up” or Left “Down” button to move the shade to desired Favorite position.

## Action on Remote Control

## Motor Response

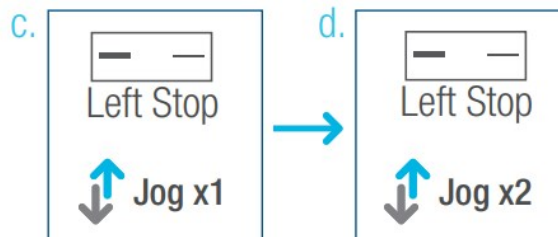


b. Press Right “P2” button on the back of remote control until motor jog x1.

c. Press and hold Left “Stop” button until motor jog x1.

## Action on Remote Control

## Motor Response



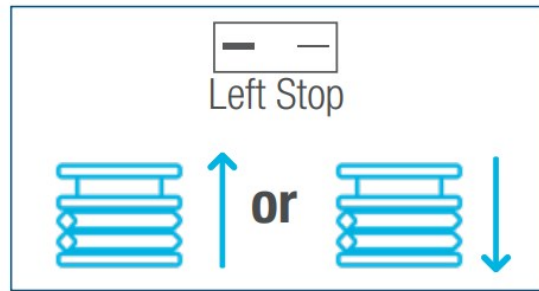
d. Once more, press and hold (about 2 sec) Left “Stop” button until motor jog x2.

## Send Shade to Favorite Position

Press and hold (about 2 sec) Left “Stop” button, motor will move to Favorite position.

Action on  
Remote Control

Shade Response

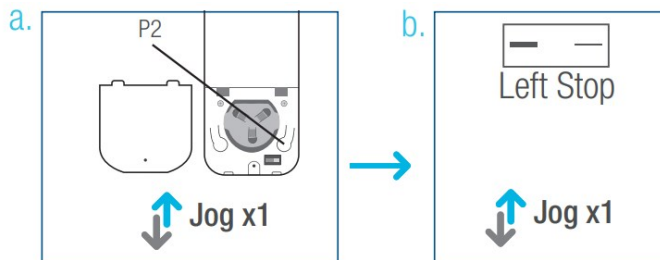


## Delete Favorite Position

a. Press Right “P2” button until motor jog.

Action on  
Remote Control

Motor Response

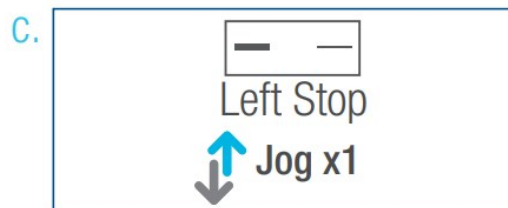


b. Press and hold Left “Stop” button until motor jog.

c. Once more, press and hold Left “Stop” button until motor jog x1.

Action on  
Remote Control

Motor Response



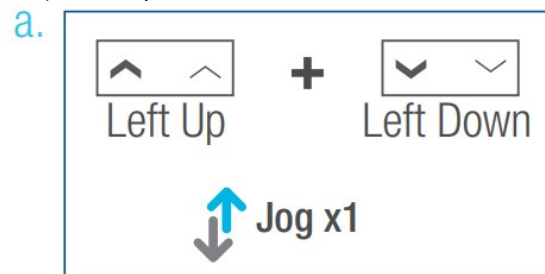
## Roller Mode and Sheer Mode

### Roller Shade Mode – continue movement after a short press – Default Mode

a. Press and hold (about 5 sec) Left “Up” and Left “Down” buttons simultaneously until motor jog x1.

Action on  
Remote Control

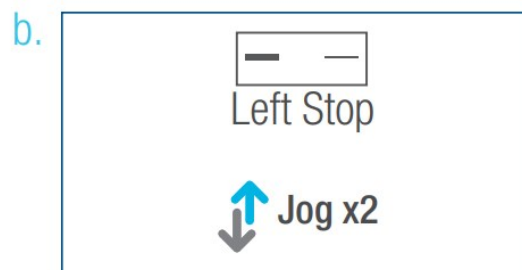
Motor Response



b. Press and hold (about 2 sec) Left “Stop” button until motor jog x2.

Action on  
Remote Control

Motor Response



## Sheer Shade Mode – jog movement after a short press (continue movement after a long press)

a. Press and hold (about 5 sec) Left “Up” and Left “Down” buttons simultaneously until motor jog x1.

Action on  
Remote Control



Motor Response

b. Press and hold (about 2 sec) Left “Stop” button until motor jog x1.

Action on  
Remote Control



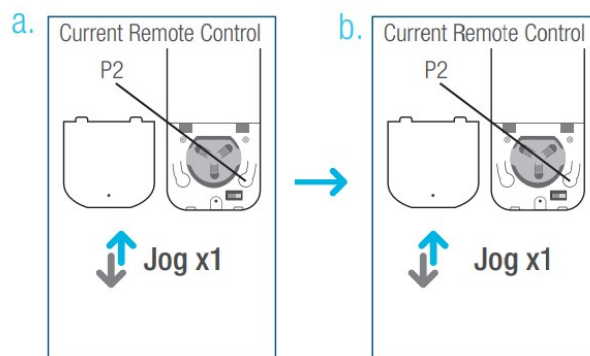
Motor Response

## Add or Remove Additional Remote

### Using Current Remote Control

a. On the current remote control, press Right “P2” button until motor jog x1.

Action on  
Remote Control

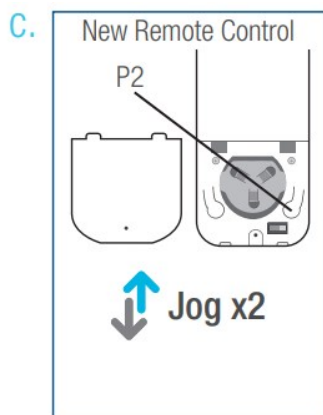


Motor Response

b. Once more, on the current remote control, press Right “P2” button until motor jog x1.

c. On the New remote control, press Right “P2” button until motor jog x2.

Action on  
Remote Control



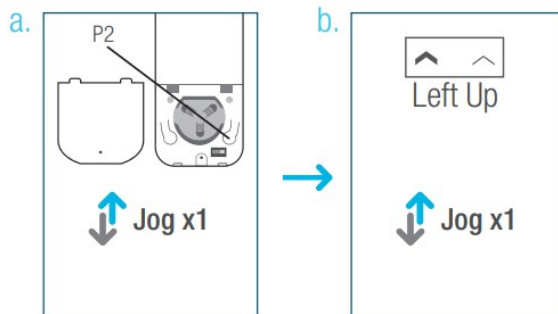
Motor Response

## Adjust Motor Speed

### Acceleration Speed

a. Press Right “P2” button until motor jog x1.

Action on  
Remote Control

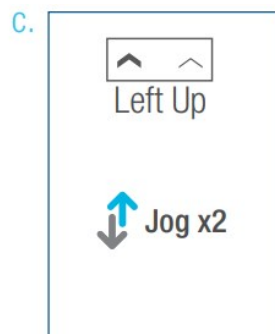


Motor Response

b. Press Left “Up” button until motor jog x1.

c. Once more, press Left “Up” button until motor jog x2.

Action on  
Remote Control

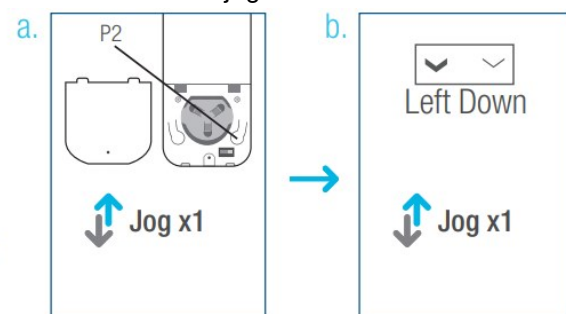


Motor Response

### Deceleration Speed

a. Press Right “P2” button until motor jog x1.

Action on  
Remote Control

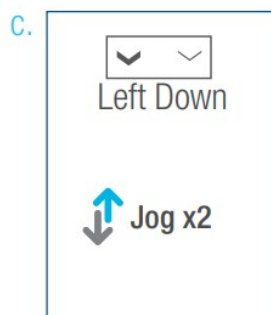


Motor Response

b. Press Left “Down” button until motor jog x1.

c. Once more, press Left “Down” button until motor jog x2.

Action on  
Remote Control



Motor Response



Do not dispose of in general waste. Please recycle batteries and damaged electrical products appropriately.



Please scan QR code to see more AMP™ product information

## Documents / Resources



[AMP AMPTDBU RF Controller](#) [pdf] User Manual

AMPTDBUCLV2, 2AU29AMPTDBUCLV2, AMPTDBU RF Controller, AMPTDBU, RF Controller, Controller

Manuals+.