

AML
180-7800 Enterprise
Mobile Computer



AML 180-7800 Enterprise Mobile Computer User Guide

[Home](#) » [AML](#) » AML 180-7800 Enterprise Mobile Computer User Guide 

Contents

- 1 [AML 180-7800 Enterprise Mobile Computer](#)
- 2 [Specifications](#)
- 3 [Product Usage Instructions](#)
- 4 [BUTTON FUNCTION](#)
- 5 [Installing/Replacing the Battery](#)
- 6 [Charging the StrikerX](#)
- 7 [Setting up a Wi-Fi Connection](#)
- 8 [Power Management](#)
- 9 [Battery Care](#)
- 10 [Sanitizing Your StrikerX](#)
- 11 [Accessories](#)
- 12 [Warranty Protection and Technical Support](#)
- 13 [FAQ](#)
- 14 [Documents / Resources](#)
 - 14.1 [References](#)



AML 180-7800 Enterprise Mobile Computer



Specifications

Operating System	Android 13+
Processor	Qualcomm QCS6490, Octa Core, 2.7 GHz
Memory	4GB RAM, 64GB Flash
Display	4.0" 800 x 480 IPS LCD
Keypad	47-key, 58-key Tactile
Audio	Built-in Speaker, Microphone, Audio Jack.
WLAN	802.11ax, Wi-Fi 6E
WPAN	BLE 5.2 Dual Mode
Main Battery	24.3 Watt-hour Li-Ion
Barcode Scanning	2D Imager, 2D Near/Far Imager
Physical Size (Handle)	8.5" x 3.1" x 6.1" (21.6cm x 7.9cm x 15.5cm)
Physical Size (No Handle)	8.5" x 3.1" x 1.8" (21.6cm x 7.9cm x 4.5cm)
Weight (Handle)	20.6 ounces (584 grams)
Weight (No Handle)	17.6 ounces (499 grams)
Drop Specification	6' to concrete
Tumble Specification	1,000 x 1-meter tumbles
Environmental Sealing	IP65
Operating Temperature	-4° to 122° F (-20° to 50° C)
Other Features/Options	Integrated flashlight with dedicated switch. Camera, 13MP (Optional)
Made in USA	YES

Enterprise Mobile Computer Quick Reference Guide

7361 Airport Freeway Richland Hills, Texas 76118 [800-648-4452](tel:800-648-4452) www.amltd.com 08-01-2024

Product Usage Instructions

Power Button

- Press and release the power button to turn the device on.
- To put the device into sleep mode, press the power button quickly.
- To turn off the device, press and hold the power button until a pop-up appears with options to Power off or Restart.

Microphones

- **Barcode Scanner Button**

The LED flashlight can be activated by pressing the Function Key (Fn) and then the ENTER key. Repeat the procedure to turn it off.

- **Installing/Replacing the Battery**

Use only the specified battery (AML Part No. 180-7800) to avoid warranty voidance or malfunction. To replace the battery, follow the manufacturer's instructions.

- **Charging the StrikerX**

Ensure the charging cradle is powered on using the provided 12VDC power supply. Place the device in the cradle correctly. Monitor the indicator panel to know when the device is fully charged.

Setting up a Wi-Fi Connection

1. Find and select the Settings icon on the home screen.
2. In Settings, go to Network & Internet > Internet.
3. Toggle the Wi-Fi button to ON, select a network, and enter the required credentials.

Power Management Tips

To maximize efficiency and battery life:

- Follow power management guidelines.
- Maintain battery care.

Sanitizing Your StrikerX

Clean and sanitize using a diluted solution of water and rubbing alcohol. Apply to a soft cloth and wipe all surfaces of the device.

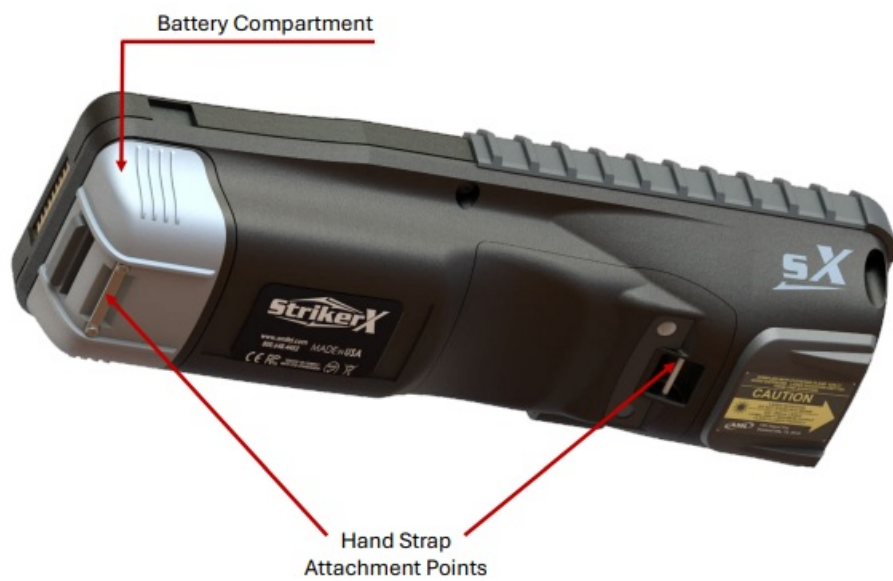
AML reserves the right to make changes in specifications and other information contained in this document without prior notice, and the reader should in all cases consult with AML to determine whether any such changes have been made. The information in this publication does not represent a commitment on the part of AML. AML shall not be liable for technical or editorial errors or omissions contained herein; nor for incidental or consequential damages resulting from the furnishing, performance, or use of this material. This document contains proprietary information which is protected by copyright. All rights are reserved. No part of this document may be photocopied, reproduced, or translated into another language without the prior written consent of AML.

BUTTON FUNCTION



Non-Handle Version

The LED flashlight may be activated by pressing the Function Key (Fn) and then the ENTER key. Repeat the procedure to turn it off.



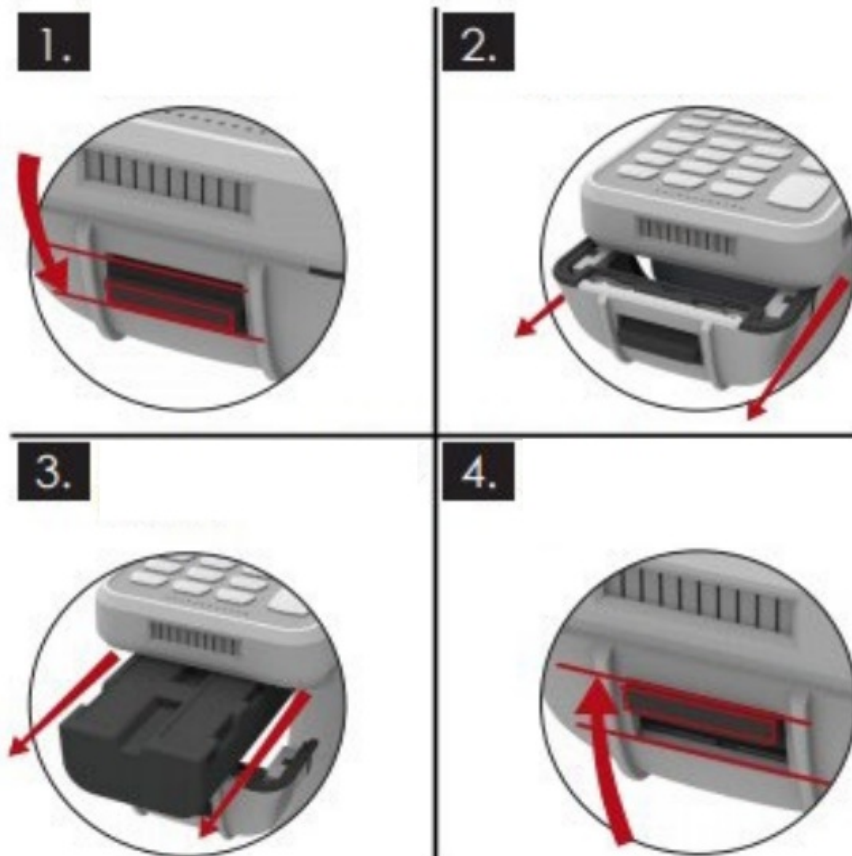
Handle Version



Installing/Replacing the Battery

Please note that the only battery to be used with your StrikerX is AML Part No. 180-7800. Using any other battery will void any warranty or maintenance plan and can result in malfunction, over- heating, or risk of fire.

1. Slide the black tab down
2. Pull battery door in the direction shown
3. Remove/ replace battery
4. Replace battery door and slide tab to locked position



Charging the StrikerX

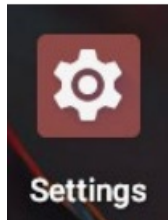
- First, make sure the charging cradle is powered on using the supplied 12VDC power supply. Using any other power source may damage the cradle. Once powered up, a RED LED on the left side of the indicator panel will illuminate.
- To charge the StrikerX, set it into the cradle and ensure that it is seated properly. If the battery is not fully charged, a RED LED in the middle of the indicator panel will illuminate. Leave the StrikerX in the charging cradle until this LED turns GREEN.
- Install an optional spare battery, into the spare battery compartment on the back side of the cradle. The LED on the far right of the indicator panel will illuminate RED while charging and turn GREEN when fully charged.



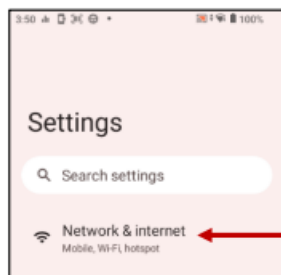
ACC-7725 Cradle

Setting up a Wi-Fi Connection

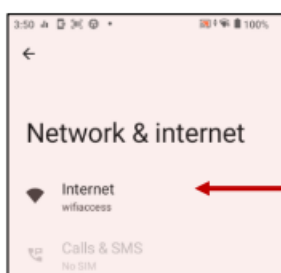
- Locate and select the Settings icon on the home screen.



- In the Settings menu, select Network & Internet.

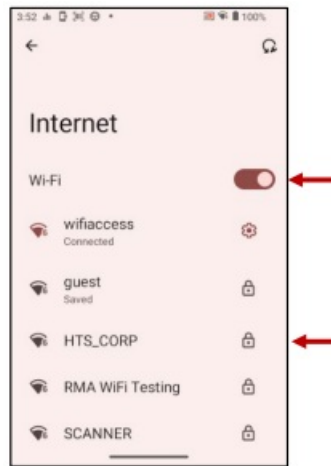


- Select Internet.



- Make sure the Wi-Fi button is toggled to the ON position.

- Select a network and then follow the prompts to enter the proper credentials to allow access.



Power Management

Tips

- Follow these simple rules to ensure that the StrikerX performs at maximum efficiency for the longest possible duration.
- Know the difference between “sleep mode” and “power off”. When the power button is pressed and released, the display will dim, and the StrikerX will go into low-power “sleep” mode. The device will continue to consume battery power, but at a drastically reduced rate. But if left overnight, the user will notice they have less battery capacity when they wake the device than it did when they shut it down. If the StrikerX is going to be left idle for any significant period of time, it is better to completely power down the device by holding the power button down until a prompt appears that will give you the option to “Power off” or “Restart”. Confirm a true power-down by tapping the “Power off” button.
- When “hot swapping” the main battery, ensure that a new battery is installed within 10 minutes. If it sits idle for a while before a new battery is installed, ensure the device is properly TURNED OFF. When the main battery is removed, the display will immediately go dark which might lead the user to believe the device has turned off. In fact, it has gone into “low power” mode and is now running off of the internal backup battery. The longer the device remains in this state, the more the backup battery is depleted. Once the backup battery is depleted, the StrikerX powers down.
- When a main battery is inserted into a StrikerX with a depleted back-up battery, it will power the device so the user can return to work, but some of its power is used to recharge the backup battery.
- For the first several minutes it will recharge the back-up battery at an accelerated rate to get it quickly charged in case it is needed again soon. The backup battery will typically be fully recharged within the first two hours. During this period when the backup battery is recharging, users may notice the main battery depleting more rapidly than normal, resulting in overall reduced battery life for that charge session.
- To avoid this, minimize the time the device is in low power mode without a main battery. Install a fresh main battery quickly when hot-swapping batteries. If a device has been in low-power mode, without a main battery for 10 minutes or more, install a fresh battery then set the StrikerX in a cradle for a half-hour or longer so that the backup battery can re-charge without taxing the main battery.

Battery Care

Adequate battery life is crucial to the performance of mobile computing devices. Here are some tips for prolonging the life of your Striker batteries:

- Charging your batteries at room temperature is recommended. Charging at lower temperatures will require a longer charge time and charging below freezing can permanently damage battery cells, making them more sensitive to failure when exposed to vibration and other stresses. Charging at elevated temperatures (above 40°C / 104°F) is also not recommended as it can create a possible thermal runaway condition that can also permanently damage a battery cell.
- Avoid discharging the batteries completely. The shorter the discharge, the longer the battery lasts. There is no issue with “memory” and the battery does not need periodic full discharge cycles to prolong life.
- Avoid storing batteries with a full charge. If you purchase batteries to be used as replacements in the future, avoid the urge to fully charge them and then set them on the shelf. Instead, place them in a cool, dry place and then wait to charge them fully when you’re ready to use them. Ideally, Li-ion batteries should be charged at 40 percent for long-term storage. The worst possible scenario is a fully charged battery stored at an elevated temperature.
- Date-stamp your batteries when you receive them. If you use the “500-cycle rule” – meaning that your battery should last about 500 charges – you can calculate about how long your batteries are expected to work at 80 to 100% of full capacity. It’s important to note that Lithium-Ion batteries do just simply age, regardless of charge cycles. If a battery is five years old, even if it’s only used once a month, it will still not perform at full capacity.

Sanitizing Your StrikerX

The best way to clean and sanitize your AML mobile computer or kiosk is to use a diluted solution of three-parts water and one-part rubbing alcohol. Rubbing alcohol is a diluted form of isopropyl alcohol. It typically contains 70% isopropyl alcohol with the balance consisting of other denaturants. Do not use full-strength isopropyl alcohol. Apply the solution to a soft cloth first, and then wipe all surfaces of the device.



AML's UV Locker is an ideal solution when devices are shared among workers. Devices are loaded into the UV Locker and then subjected to intense UV light that decontaminates without the use of cleaners and chemicals.



Accessories

- **ACC-7725 Charging Cradle**

Charges one StrikerX and one spare battery.



- **ACC-7736 Mobile Charging Cradle**

Designed for vehicle mount applications, Charges one StrikerX and one spare battery.



- **ACC-7037 Four Position Battery Charger**

Charges four batteries simultaneously.



- **ACC-7715-PS Inline Charger**

Charges one StrikerX.



- **ACC-7735 Four-Position Device Charger**

Charges four StrikerX simultaneously.



Warranty Protection and Technical Support

Do I have the coverage I need?

UPGRADE YOUR WARRANTY TODAY!

Extended Warranty Plus:

- Covers the failure of internal components as a result of normal wear and tear.
- Covers firmware upgrades.
- Four (4) business-day turnaround, excluding time in transit, when RMA number is properly marked on the outside of the box.
- Standard return freight (UPS ground) included. The Extended Warranty Plus also includes coverage for failure of external components regardless of fault.*

*Some Exclusions Apply.

Contact AML for further details

- www.amltd.com
- 800.648.4452

If your Striker mobile computer is in need of repairs, you may request an RMA number (Return Material Authorization) by calling [877-842-3990](tel:877-842-3990), between 8:00 am and 5:00 pm, (CST) Monday-Friday.

You may also request an RMA number online at: <https://www.amltd.com/RMA-Request>

AML Technical Support Team

AML technical phone support is toll-free and pain-free. Speak with a US-based AML employee trained to answer your question and do everything possible to resolve any issues that might arise. [877-842-3990](tel:877-842-3990) Mon-Fri 8:00 to 5:00 CST

Product Registration

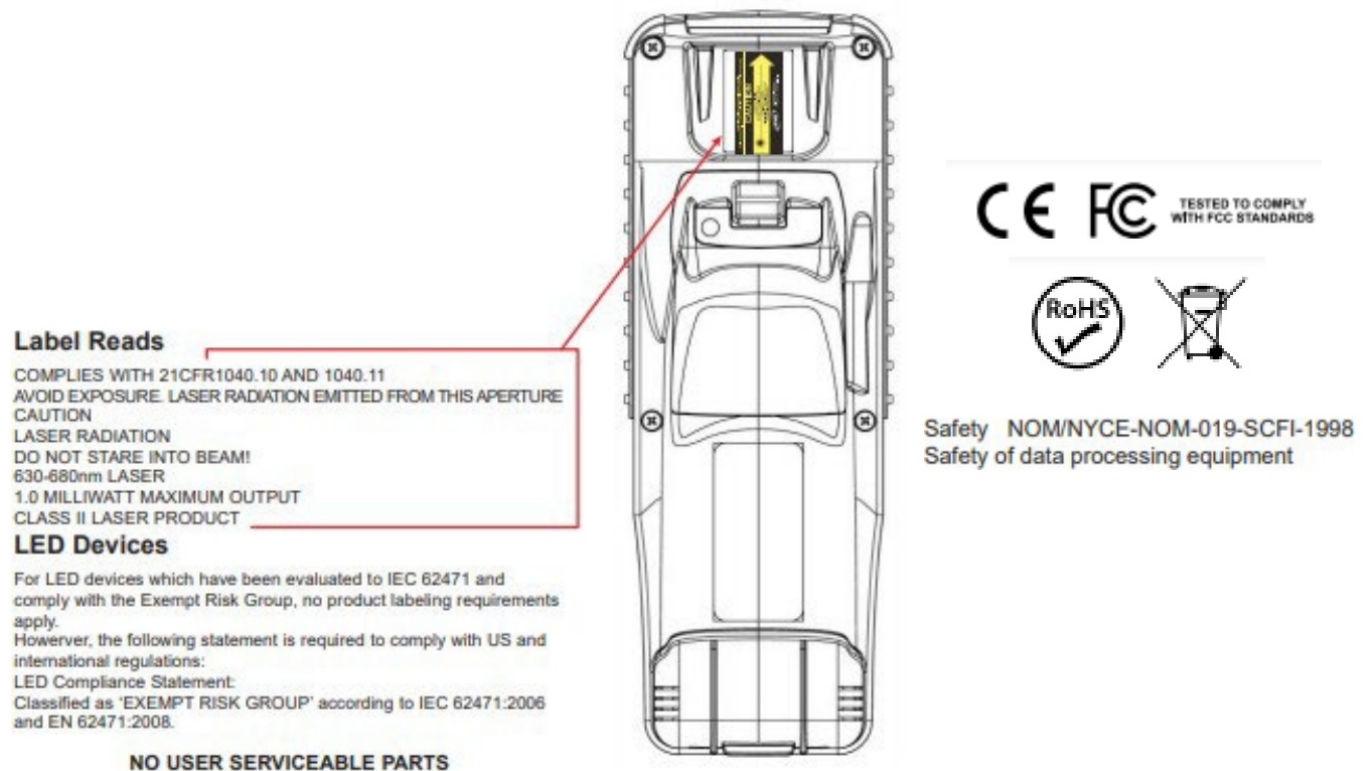
In order to help facilitate support inquiries, please register your product. You can register your products online at www.amltd.com/register

Laser Devices

- Class 2 laser scanners use a low power, visible light diode.
- As with any very bright light source, such as the sun, the user should avoid staring directly into the light beam.
- Momentary exposure to a Class 2 laser is not known to be harmful.
- The following statement is required to comply with US and international regulations.

CAUTION

Use of controls, adjustments, or the performance of procedures other than those specified herein may result in hazardous laser light exposure.



- 7361 Airport Freeway Richland Hills, Texas 76118
- [800-648-4452](tel:800-648-4452)
- www.amltd.com

MADE IN USA SINCE 1983

FAQ

Q: What should I do if my device is not charging properly?

A: Ensure the charging cradle is powered on with the correct power supply and that the device is placed correctly in the cradle. If issues persist, contact customer support.

Q: How can I prolong the battery life of my StrikerX?

A: Follow battery care tips provided in the user manual, including using only specified batteries and following proper charging procedures.

Documents / Resources



[AML 180-7800 Enterprise Mobile Computer](#) [pdf] User Guide
180-7800 Enterprise Mobile Computer, 180-7800, Enterprise Mobile Computer, Mobile Computer

References

- [User Manual](#)

[Manuals+](#), [Privacy Policy](#)

This website is an independent publication and is neither affiliated with nor endorsed by any of the trademark owners. The "Bluetooth®" word mark and logos are registered trademarks owned by Bluetooth SIG, Inc. The "Wi-Fi®" word mark and logos are registered trademarks owned by the Wi-Fi Alliance. Any use of these marks on this website does not imply any affiliation with or endorsement.