

AMKETTE Wireless Keyboard and Mouse Combo



AMKETTE Wireless Keyboard and Mouse Combo Instruction Manual

[Home](#) » [Amkette](#) » **AMKETTE Wireless Keyboard and Mouse Combo Instruction Manual** 

Contents

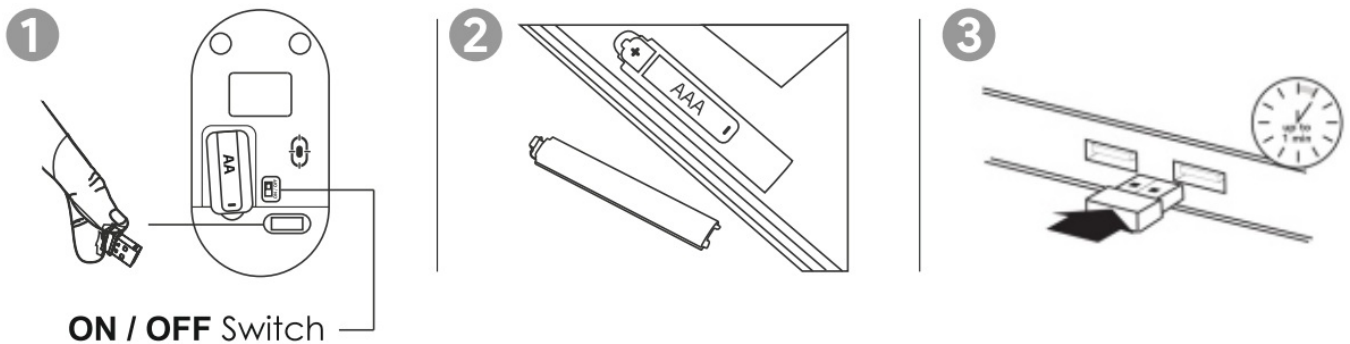
- [1 AMKETTE Wireless Keyboard and Mouse Combo](#)
- [2 PLUG-AND-PLAY INSTALLATION](#)
- [3 KNOW YOUR DESKTOP COMBO](#)
- [4 WHAT'S IN THE BOX](#)
- [5 MULTIMEDIA SHORTCUTS \(KEYBOARD ONLY\)](#)
- [6 TECHNICAL SPECIFICATIONS](#)
- [7 TROUBLESHOOTING](#)
- [8 WARRANTY STATEMENT](#)
- [9 Documents / Resources](#)
 - [9.1 References](#)



AMKETTE Wireless Keyboard and Mouse Combo

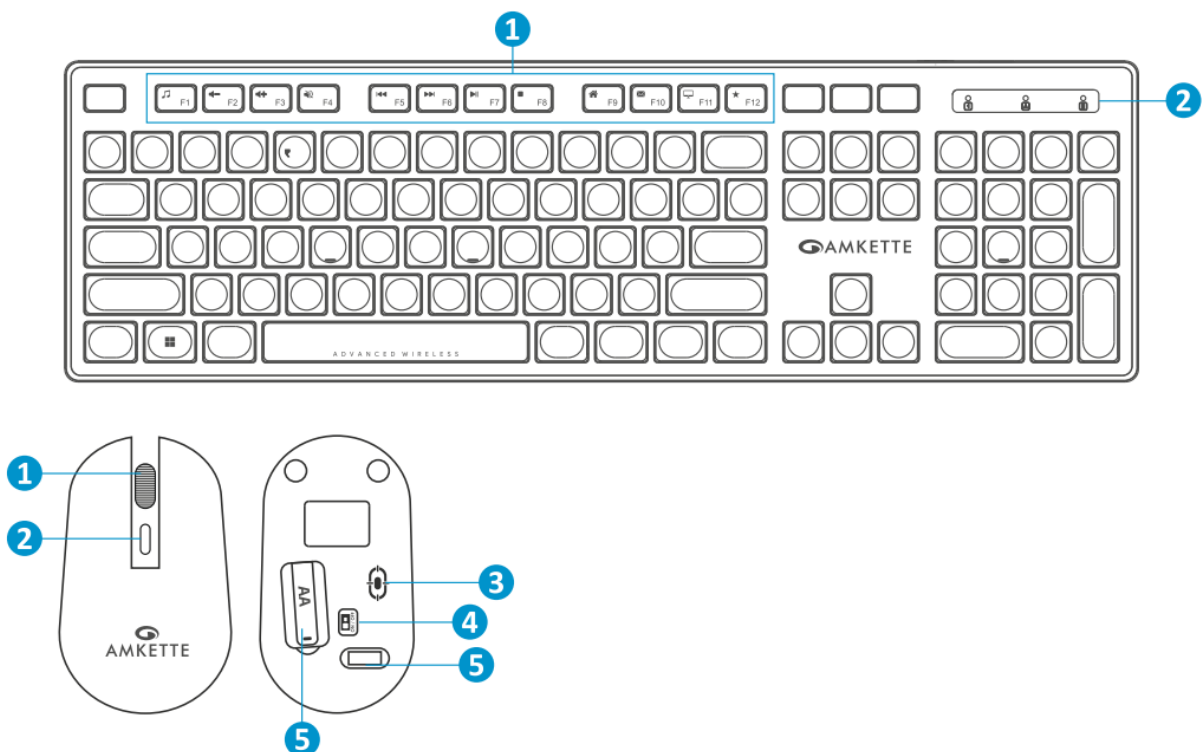


PLUG-AND-PLAY INSTALLATION



1. Take out the Nano
2. Insert the USB Receiver batteries into the located inside the Keyboard and Mouse battery Mouse.
3. Plug the USB receiver into a USB port on your PC or Laptop.

KNOW YOUR DESKTOP COMBO



Mouse

- Scrolling Wheel
- DPI Switch Button
- Optical LED Sensor
- ON/OFF Switch
- 5Nano USB Receiver
- Inside the battery compartment.
- Battery Compartment

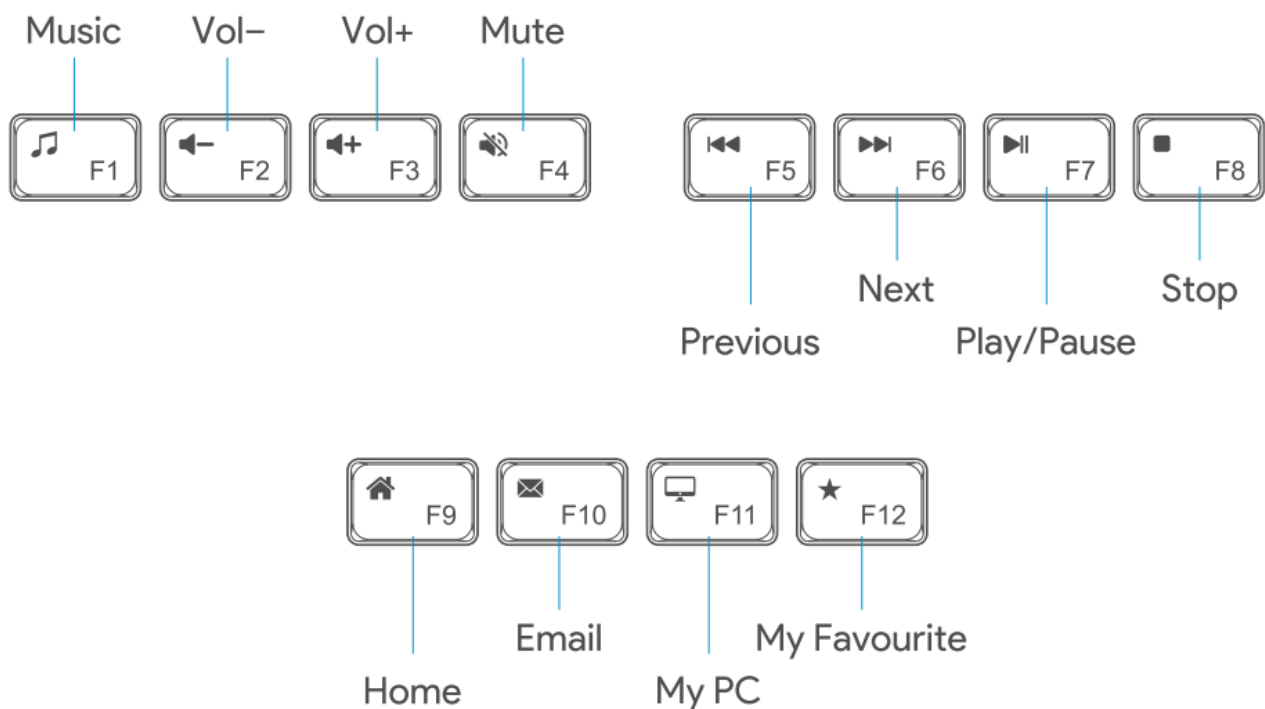
Keyboard

- Multimedia Shortcuts
- Num Lock: Solid Green
- LED Indicators
- Caps Lock: Solid Green
- Low battery: Blinks in Green
- Battery Compartment
- Back side of the Keyboard

WHAT'S IN THE BOX

1. 1 x Wireless Keyboard
2. 1 x Quick Start Guide
3. 1 x Wireless Mouse
4. 1 x Nano USB Receiver (Inside the battery compartment)

MULTIMEDIA SHORTCUTS (KEYBOARD ONLY)



This Wireless Multimedia Combo is designed for Instant media access. Single press the multimedia keys for

instant access to various media functions.

POWER SAVING MODE

To extend the standby time and reduce battery consumption, the combo will enter into sleep mode after 2 minutes of inactivity. Click on the mouse button to exit from sleep mode.

ADJUSTABLE MOUSE SPEED

Designed to meet the needs of different users Primus Neo Wireless Combo mouse comes with an adjustable DPI Switch to adjust the sensitivity of the mouse between 3 Speed Levels (800/1200/1600).

TECHNICAL SPECIFICATIONS

Technology	:	2.4 GHz Wireless
Connection	:	Plug n' Play
Wireless Range	:	up to 10 meters
Tracking Method	:	Optical
DPI	:	800 / 1200 / 1600 Adjustable (1200 Default)
Tracking Surface	:	Multi Surface Tracking
Multimedia Keys	:	12
Keyboard Layout	:	Full Size
Keyboard Battery	:	1 x AAA Battery
Mouse Battery	:	1 x AA Battery

TROUBLESHOOTING

- Please ensure that the batteries in both the Keyboard and Mouse are installed properly and the mouse is turned on.
- Ensure that all the batteries are in working condition.
- Plug the Nano USB receiver into a different USB port.
- If the connection is lost by any chance simply re-insert the Dongle into the USB port.
- Restart your PC or Laptop with the Nano receiver plugged into the USB port.

WARRANTY STATEMENT

Amkette's Primus Neo Wireless Keyboard and Mouse Combo is backed by a 1 Year performance warranty against any manufacturing defects in material or workmanship from the date of original purchase. This warranty entitles the purchaser to get the product repaired or replaced under the following conditions:

- The warranty applies to the original purchaser. Proof of original purchase is required.
- The warranty does not cover the damage caused by misuse, abuse or improper storage.
- In no event shall Amkette be responsible for any direct, incidental, consequential or other damages of any kind.

Please contact our Customer Support Line and/or send the defective product, together with the proof of purchase to our Customer Care Service Center to avail of warranty service.

Return charges will be paid by us.

Customer Care Service Centre: Amkette House, C-64 / 4, Okhla Phase – II, New Delhi – 110020

1800-11-9090 (Toll Free)

+91 9312691448

(9:30 AM – 6:00 PM) Mon – Sat

(9:30 AM – 6:00 PM) Mon – Sat

techsupport@amkette.in

For Hassle-Free Service Register your product online at www.amkette.com/register

Documents / Resources



[AMKETTE Wireless Keyboard and Mouse Combo](#) [pdf] Instruction Manual
Wireless Keyboard and Mouse Combo, Keyboard and Mouse Combo, Mouse Combo, Combo

References

- [User Manual](#)

Manuals+, Privacy Policy

This website is an independent publication and is neither affiliated with nor endorsed by any of the trademark owners. The "Bluetooth®" word mark and logos are registered trademarks owned by Bluetooth SIG, Inc. The "Wi-Fi®" word mark and logos are registered trademarks owned by the Wi-Fi Alliance. Any use of these marks on this website does not imply any affiliation with or endorsement.