

# AMEWi TF520 Fish Finder with Transducer Instruction Manual

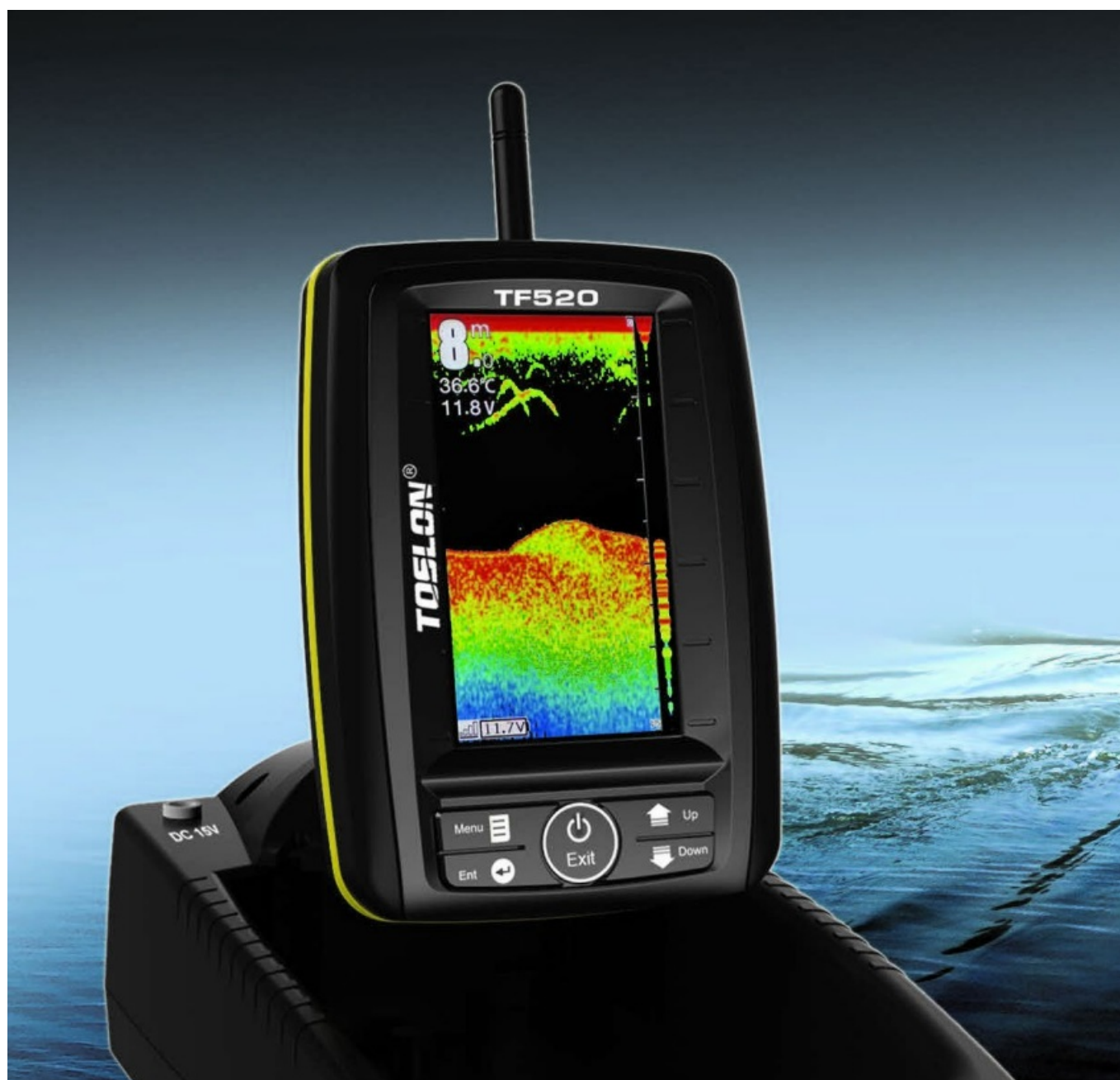


## Contents

- [1 Quick Start Guide V1.1](#)
- [2 SCHNELLSTARTANLEITUNG](#)
  - [2.1 CONTENTS](#)
  - [2.2 POWERING](#)
  - [2.3 USING](#)
  - [2.4 KEY FUNCTION](#)
  - [2.5 WHAT'S ON THE DISPLAY](#)
  - [2.6 MENU OPERATION](#)
  - [2.7 MENU LIST](#)
  - [2.8 SPECIFICATIONS AND FEATURES](#)
- [3 Documents / Resources](#)
  - [3.1 References](#)
- [4 Related Posts](#)

## Quick Start Guide V1.1

## SCHNELLSTARTANLEITUNG



## INSTRUCTION MANUAL TOSLON TF520

### CONTENTS

#### Monitor

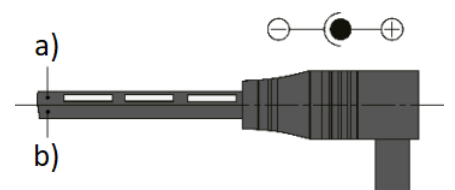


### Transducer



1. Sonar Box 520W
2. Power cable DC 5,5-2,1)

### Sonar Box



- a) Positive Elektrode
- b) Negative Elektrode

3. Transducer Adapter
4. Antenna for Monitor
5. Antenna for Sonar Box
6. SMA Radio Cable
7. Valcro







The Toslon TF520 Sonar Box is already installed in your Baiting 2500 boat and requires no further installation.

#### POWERING

	For Monitor	For Sonar Box
Recommended voltage	9 – 15V	9 – 12V
Maximum voltage	16,0V	14,8V

Note: overvoltage may burn the elements in the device!

From below shows the voltage range of the most popular batteries in the market:

Battery type	Voltage	Permission
12V Lead-acid	10,8V – 14,8V	
8x AA NiMH	7,8V – 10,6V	
8x AA Alkaline	7,5V-12,8V	
2S Lithium	5,6-8,4V	
3S Lithium	8,4-12,6V	
4S Lithium	11,2V-16,8V	

#### USING

1. Please do not put the display on ground during the operation, which could cause a short R/C distance.  
It is recommended to install the monitor on a tripod, which can ensure that the monitor is at least 1.2 meters above the ground.
2. Make sure the antenna is tighten on the boat, otherwise the R/C distance will be greatly shorten.

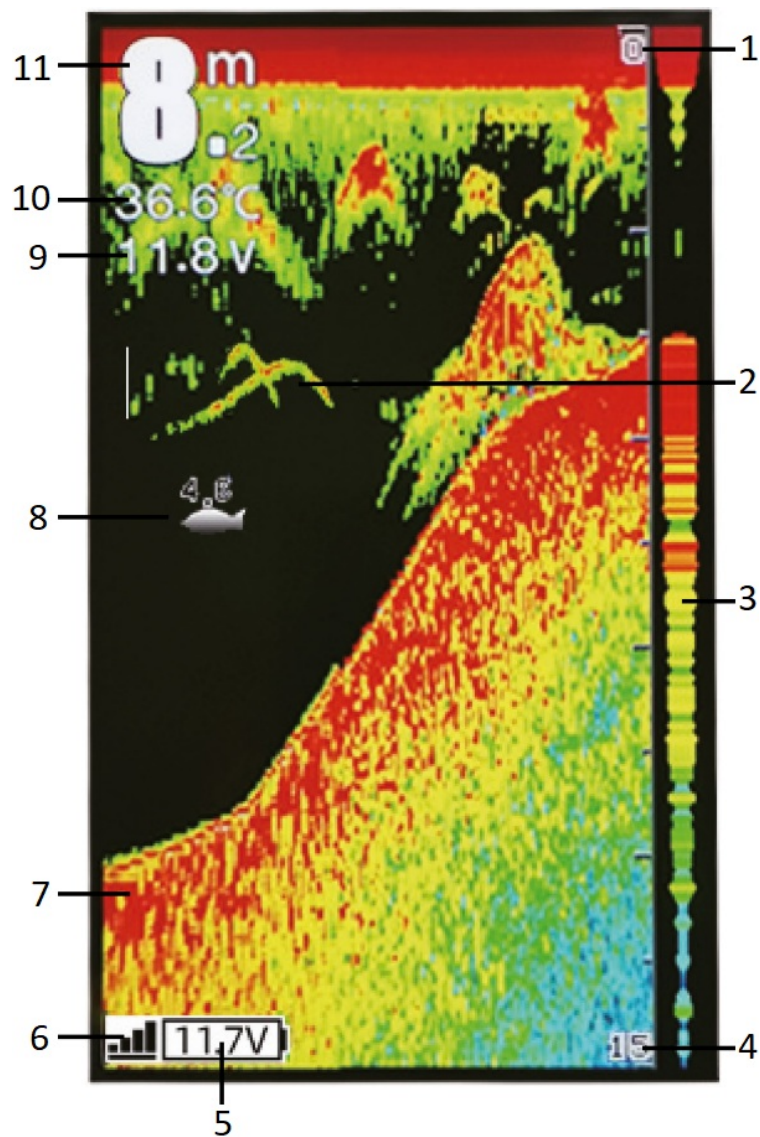


#### KEY FUNCTION



Menu	Open Menu settings; Switch between menus
Ent	Finalizes menu selections; confirm a setting
Up	Move up to select menu; increase a value of option
Down	Move down to select menu; decrease a value of option
Power / Exit	Turns unit on/off. Also be use to quit a menu setting

#### WHAT'S ON THE DISPLAY



1. Upper depth range
2. Fish arc
3. Real time echo window
4. Lower depth range
5. Voltage of monitor
6. Signal indicator
7. Bottom structure
8. Fish symbol
9. Voltage of boat
10. Water temperature
11. Depth readout

### MENU OPERATION

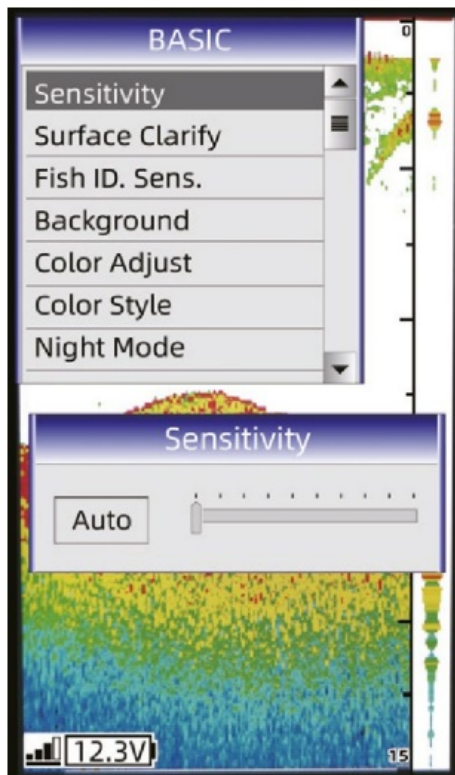
In most cases, the default setting is sufficient. However, in some situations you may need to adjust the menu setting to get the best performance on the system.

### Sensitivity

Sets how the echoes are displayed on the screen. If you increase the sensitivity, you can see more details on the

screen.

In deep water, increase the sensitivity. In shallow water, on the other hand, decrease the sensitivity.



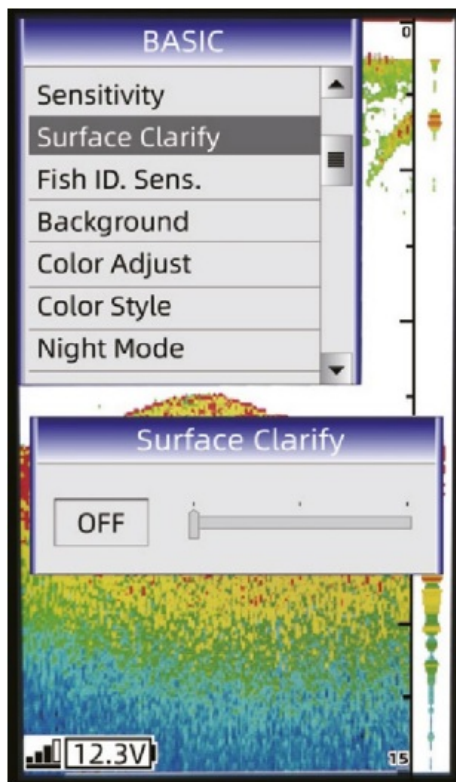
### How to set the Sensitivity?

- 1.) Press MENU key, and go to "Sensitivity".
- 2.) Press ENT key to conform the selection.
- 3.) Press UP/DOWN key to increase/decrease the value.
- 4.) Press ENT key to confirm the setting.

### Surface clarify

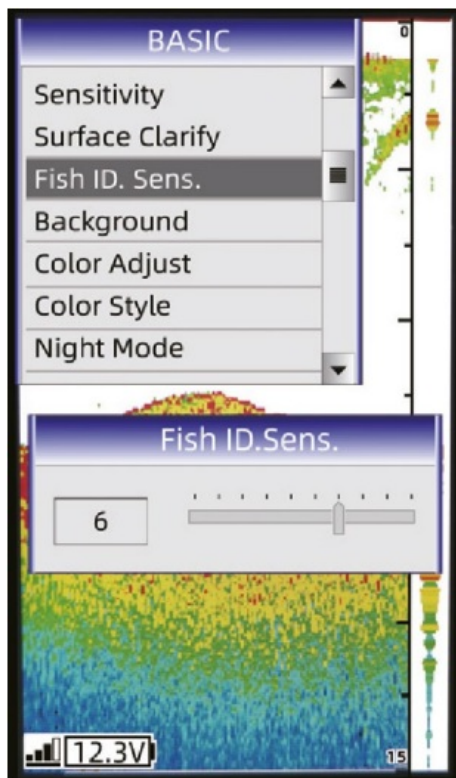
Wave action, boat waves and temperature inversions can cause interference on the screen near the surface. The surface clarification option reduces surface interference by reducing the sensitivity of the receiver near the surface.





### Fish ID Sens.

Fish ID. Sens. adjust the threshold of fish size display. Selecting a higher setting allows weak returns being displayed as fish, which is helpful especially when you are intending to find smaller fish species or bait fish. Selecting a low setting will prevent weak sonar returns being displayed as fish, which will be very helpful when you are seeking large species of fish. Note: If you hope to find big fish, please set the value to 1. However, if you hope to find all the fish, including small ones, set the value to 9.



### Sonar Gain



The gain controls the sensitivity of the hardware receiver. A higher gain makes the sonar more sensitive to echo returns, allowing it to display weaker targets.

If the gain is set too high, the image might be cluttered with background noise.



## Radio Bind

For the TF520, each Sonar Box has an “Identity Card”. It only can relate to one monitor.

And for all TF520s that were sold, the authorisation process was done in advance by Toslon. However, in some cases you may mix the monitor and the Sonar Box. Then you need do the radio bind as following instruction:

1. Enter “Radio Bind” menu, a message is shown to remind you to power on the Sonar Box.
2. Power on the Sonar Box, the device will make radio bind automatically.

Note: before making Radio Bind, please power off the Sonar Box in advance.



## MENU LIST

BASIC	Sensitivity	Controls the level of details shown on the display.
	Surface Clarify	Reduces surface clutter by decreasing the sensitivity of the receiver near the surface.
	Fish ID Sens.	Adjust the threshold of fish size display. (see manual)
	Background	Change the background of the screen.
	Color Adjust	Adjust the contrast & brightness of sonar image.
	Color Style	Provides different colour styles for the sonar image.
	Night Mode	Adjust the brightness of backlight to suit device using at dark environment.
SONAR	Depth Range	Determine in which portion the bottom will be displayed on the screen.
	Sonar Gain	Controls the sensitivity of the sonar receiver
	Shallow Alarm	Sounds when the depth becomes equal to or less than the menu setting
	Measure Units	Selects the units of measure for all distance and temperature related readouts.
	Fish Alarm	Sounds when the fish finder detects what it determines to be a fish.
SYSTEM	Simulator	Used to let you practicing using the Fishfinder as if you were on the water.
	Backlight	Adjust the brightness of backlight.
	Key Tone	Set if the sonar unit sound a tone or not when a key is pressed.
	Language	Select the display language for menus.
	Battery Alarm	Sounds when the input battery voltage of display is equal to or less than the setting.
	Boat Voltage Alarm	Sounds when the input battery voltage of Sonar Box is equal to or less than the setting.
	Default Settings	Used to restore original factory setting.
	System information	Show system information of device.
	Radio Bind	Make authorization between monitor and Sonar Box.
	Update Devices	Update monitor or Sonar Box with latest version of software.

## SPECIFICATIONS AND FEATURES

Specifications and features	Display	Display size: 4.3" TFT LCD, non-reflective
		Resolution: 480×272 Pixels; 65536 color
		Language: Multi-language
		Monitor and Display Real-time Voltage of Bait boat Battery
		IPX6 Level Waterproof Casing Design
	Sonar	Depth Capability: 30m (100ft)
		Sonar Frequency: 115Khz
		Sonar Beam Angle: 60deg @-10db
		Sonar Alarms: Fish / Shallow / Low Battery
	R/F	Radio frequency: 2,4GHz
		Frequency Power: 20dBm
	Power	DC 9-15V / 3S Lithium
		Akku 3S 18650 (Optional)
	Technical & Case	Sensor cable length: 0,5m
		Sonar unit size: 153 x110 x 44mm
		Operational Temperature: -10°C ~ 50°C
		Water Temp. Included in Transducer
	Features	Frequency-hopping spread spectrum (FHSS)
		Direct-sequence spread spectrum (DSSS)
		Hardware gain adjustable
		Built in 3S lithium battery charging function
		Stable wireless performance even in bad condition

amewi.com



**Documents / Resources**



[AMEWi TF520 Fish Finder with Transducer](#) [pdf] Instruction Manual

TF520 Fish Finder with Transducer, TF520, Fish Finder with Transducer, Finder with Transducer, Transducer, Fish Finder, Finder

## References

- [User Manual](#)