



AMEWi T6REMOTE 6CH Remote Controller Instruction Manual

[Home](#) » [AMEWi](#) » AMEWi T6REMOTE 6CH Remote Controller Instruction Manual 

Contents

- [1 AMEWi T6REMOTE 6CH Remote Controller](#)
- [2 DECLARATION ON CONFORMITY](#)
- [3 SECURITY AND HAZARD WARNINGS](#)
- [4 BATTERY NOTICE / BATTERY DISPOSAL](#)
- [5 DISPOSAL](#)
- [6 TECHNICAL SPECIFICATIONS](#)
- [7 THE REMOTE CONTROLLER](#)
- [8 THE DISPLAY](#)
- [9 STANDBY MODE OF REMOTE CONTROLLER](#)
- [10 MODE SETTINGS](#)
- [11 Documents / Resources](#)
 - [11.1 References](#)
- [12 Related Posts](#)



AMEWi T6REMOTE 6CH Remote Controller



DECLARATION ON CONFORMITY

This product has been manufactured according to actual technical standards. The product is matching the requirements of the existing European and national guidelines. The Declaration of Conformity has been proofed. AMEWI Trade GmbH declares that this product is matching the basic requirements and remaining regulations of the guideline 2014/53/EU (RED). The declarations and documents are stored at the manufacturer and can be requested and applied there. <https://amewi.com/Konformitaetserklaerungen> For additional questions to the product and conformity please contact: AMEWI Trade GmbH Nikolaus-Otto-Str. 18, 33178 Borcheln Germany or website <https://amewi.com>.

SECURITY AND HAZARD WARNINGS

- For damage, caused by disregarding of the manual, warranty expires.
- We are not liable for secondary failures, material, or personal damage, caused by in proper usage or disregarding the security notices.
- Based on security and registration (CE) reasons, it is forbidden to modify the product personally. Do not disassemble the product.
- Small parts. Danger of suffocation or risk of injury caused by small parts.
- Suitable for people aged 14+!
- The product is not allowed to get moist or wet. The product is only allowed to be used on flat and clean surfaces. Even a drop down from a small height can cause damage to the product.

BATTERY NOTICE / BATTERY DISPOSAL

Attention! Battery do not belong in the hands of children. A change of the battery must be done by an adult person. Never mix rechargeable batteries with non-rechargeable batteries. Never mix fully charged batteries with almost empty batteries. Never mix batteries of different capacities. Never try to charge dry batteries. Take care of the correct polarity. Defective batteries belong to special waste. Never leave a charging battery unattended. For

questions about the charging time please read the manual or ask the manufacturer.

DISPOSAL

The company AMEWI is registered below the WEEE Reg. № DE93834722 at the foundation EAR and recycles all used electronic parts properly. Electric and electrical products are not allowed to put in household garbage. Please dispose the product at the end of the lifetime according to the actual laws. You as a customer are responsible by law for the return of all used batteries, a disposal over the household garbage is forbidden! Batteries containing hazardous substances are marked with the alongside symbols, which point to the prohibition of disposal in household garbage. Additional notations for the critical heavy metal are: Cd=Cadmium, Hg=Quicksilver, Pb=lead {Label is placed on the batteries, for example below the bottom left trash symbols). Based on RoHS labelling the manufacturer confirms, that all limit values were taken care of at the time of manufacturing. Batteries labelled with the recycling symbol can be put into used battery collecting tank. {Most supermarkets have) They are not allowed to be put into local household garbage. AMEWI Trade GmbH is involved in the dual system for boxing over the company Landbell AG. All used boxes are collected from partner companies {waste disposal contractor) at private customers {local household), sorted and properly utilized. The involvement in a Dual Systems helps to save CO₂ Emissions.

WARNING

- This remote-controlled helicopter is not a toy. It consists of many small parts, high-quality technology and is not suitable for children under 14 years of age.
- 4x AAA batteries are required for the remote control. A LiPo with 7.4V 700mAh is used for the model (included).
- Always keep your fingers away from the drive parts, gears, and other moving parts to avoid injury.
- The model's drive motors get very hot. To avoid burns, let the motors cool down for 10-15 minutes after use before touching them.
- Please only use the charger supplied or special model multifunctional chargers in order not to damage the battery.

ABOUT INAPPROPRIATE USE OF THE PRODUCT

Please do not dismantle or change the model in any way. Please do not use this product improperly or illegally and do not operate it in a way that could endanger others or yourself

IMPORTANT NOTES

This product is manufactured under strict performance guidelines and complies with safety standards and requirements. This product is not suitable for children under 14 years of age. The manufacturer is not responsible for any injury or accidents caused using abnormal parts, excessive wear and tear, improper assembly or operation. Please operate this product safely and responsibly.

PRECAUTIONS

Please read the following safety information before using the model.

- Please do not use the model in rain, snow or thunderstorms. If liquid gets into the electronics, it can be irreparably damaged.
- Please do not use the model in an environment that you cannot see.
- Signal interference can drive the model out of control. Please do not use the model in the following places
- Please do not operate the model if you are tired or feel unwell, have drunk alcohol or have used drugs – this can cause injuries to you or others.
- To avoid burns, never touch drive parts and motors during or immediately after use, as they can be very hot.

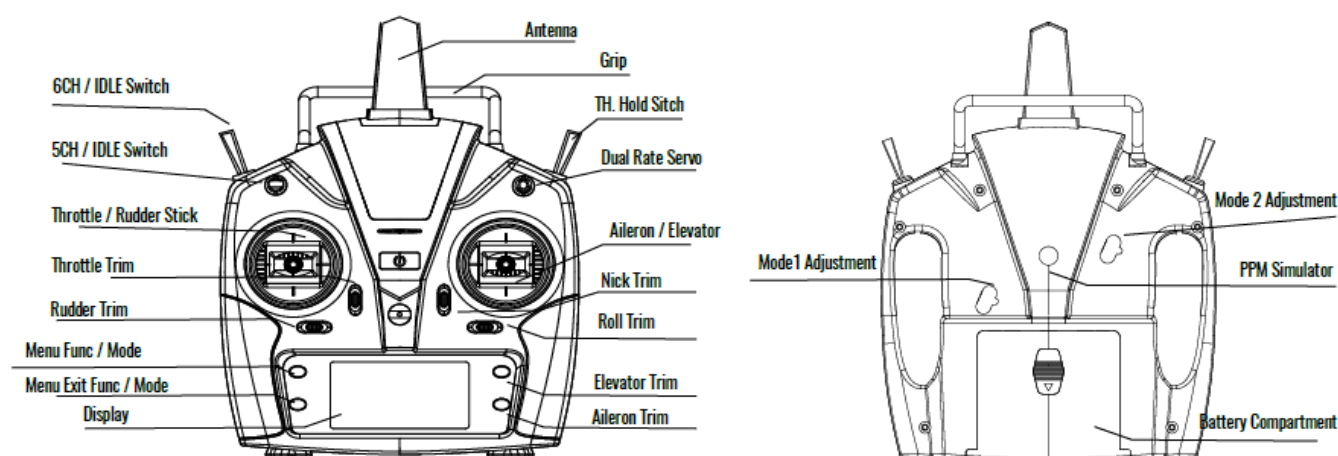
- Incorrect operation of the transmitter can cause injury to you or others. Make sure you are familiar with the operation before using the model.
- Check the model and remote control before use. Check that the screws are tight.
- When you have finished using it, be sure to turn off the model first and then the remote control. Otherwise, the model may get out of control.

If the model gets out of range, it can get out of control. Please always stay with the transmitter close to the model.

TECHNICAL SPECIFICATIONS

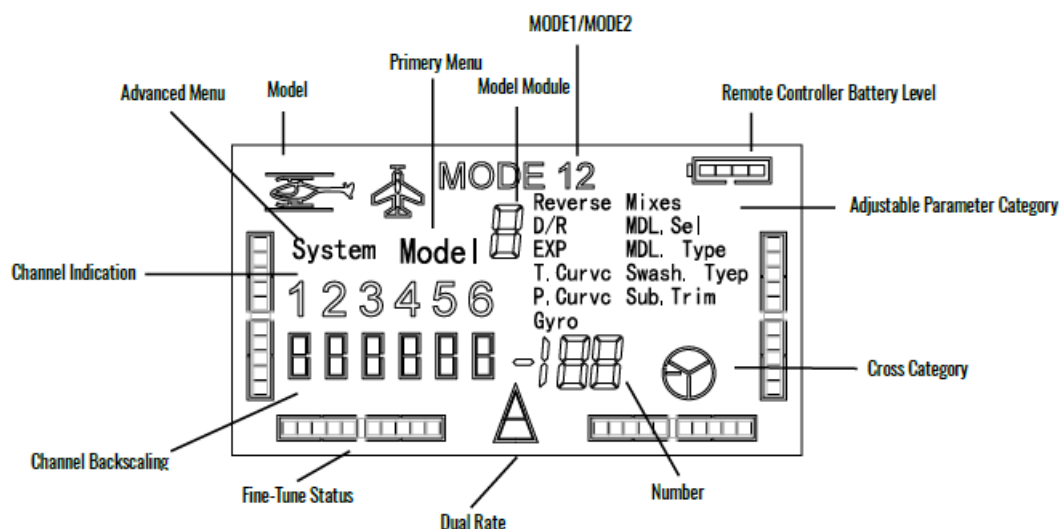
Battery-Type 4x 1,5V AA Mignon Batteries. Working voltage 6 – 9V. Working current 100-150mA. Transmitting power 2+ DBM

THE REMOTE CONTROLLER



THE DISPLAY

The remote control uses a bright, high-definition, segment LED display as the user interface, and the following figure shows the full display interface.



All the parameters can be set through the above interface, which is easy to operate with hierarchies of:

1. Screen display at start-up: single line frame indicates the channels that are related to parameter settings.
2. Screen display for Helicopter Mode.
3. Screen display for plane Mode

STANDBY MODE OF REMOTE CONTROLLER

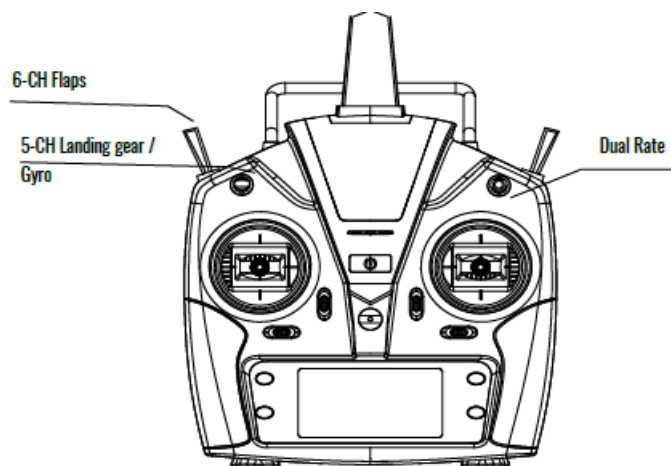
Set the switches of the remote control to the normal positions (turn the switch towards where the remote controller's cover indicates), open the remote controller to enter the standby state, and the LED display the flight parameters and related information of the current mode, which can be categorized by fixing-wing mode settings, helicopter mode settings and special function.

PLANE M ODUS	Features	
	Channel forw. + reverse setting	Reverse
	Dual Rate	D/R
	EXP curve setting	EXP
	Throttle curve setting	T. Curvc
	Channel mixing settings	Mixes
	Flight module settings	MDL.Sel
	Model category setting	MDL.Type
	Servo midpoint setting	Sub.Trim
	Channel forw. + reverse setting	Reverse
	Dual Rate	D/R
	EXP curve setting	EXP

HELICOP TER MO DUS	Throttle curve setting	T.Curvc
	Pitch curve setting	P.Curvc
	Gyro setting	Gyro
	Flight module setting	MDL.Sel
	Model category setting	MDL.Type
	Swash plate category settings	Swash-Tyep
	Servo midpoint setting	Sub.Trim

Special Function Settings
Remote control pairing
3D switch position protection
Throttle position protection
Remote control power management
Emulator function
Restore factory settings
MODE2/MODE1 conversion
Calibrate the remote control stick

MODE SETTINGS



CHANNEL FORWARD AND REVERSE SETTING

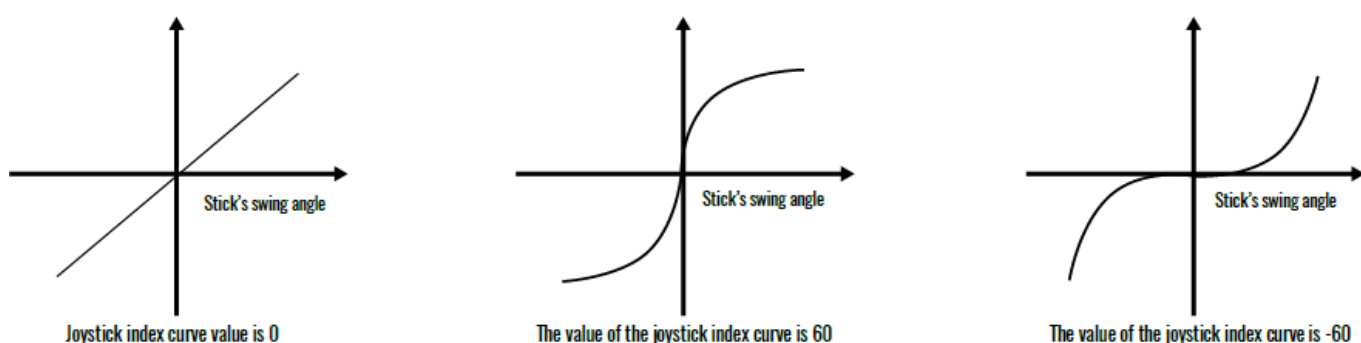
Functions	How to set up	Description
Set the directions of the moves based on the installation position of the	<ol style="list-style-type: none"> 1. Power – on status 2. Press the MODE button for one second, a beep sounds, the Reverse and 123456 flashes. 	In forward and reverse setting, the transmitter output reflects the current setting status. You must press the
servo for purposeful operations	<ol style="list-style-type: none"> 3. Press the MODE button again to select the channel to be adjusted, the corresponding channel number flashes, and Reverse and other channel numbers stop flashing. 4. Press the up or down button to reverse the icon, press the MODE button to confirm the setting and skip to the next channel, and press END button to exit the setting. <div style="text-align: center;"> </div>	confirmation key to save the setting result. It is recommended that the user set it without the propeller installed on the main motor to avoid injuries caused by sudden rotating of the propellers.
servo for purposeful operations	<ol style="list-style-type: none"> 3. Press the MODE button again to select the channel to be adjusted, the corresponding channel number flashes, and Reverse and other channel numbers stop flashing. 4. Press the up or down button to reverse the icon, press the MODE button to confirm the setting and skip to the next channel, and press END button to exit the setting. 	confirmation key to save the setting result. It is recommended that the user set it without the propeller installed on the main motor to avoid injuries caused by sudden rotating of the propellers.

DUAL RATE		
Functions	How to set up	Description
Set the amount of rudders for the three channels of the aileron in the lifting direction, and set the required values for the up, down, left, and right of the stick. This function is used to adapt to the stroke of the servo or adjust the control feel.	<ol style="list-style-type: none"> 1. power – on status 2. Press the MODE button for one second, it will beep, REVERSE and 123456 will blink. 3. Press the FLIP button until you get to the D/R setting, D/R and 12 4 will blink. 4. Press the MODE button to go to the setting. Channel 1 flashes. Use the lever to select the desired channel. The selected channel flashes. Use the up or down button to extend or shorten the path. 5. Press the MODE button to confirm and save the setting. Press the END button 2x to exit the setting. 	

DUAL RATE		
Functions	How to set up	Description
Set the amount of rudders for the three channels of the aileron in the lifting direction, and set the required values for the up, down, left, and right of the stick. This function is used to adapt to the stroke of the servo or adjust the control feel.	<ol style="list-style-type: none"> 1. power – on status 2. Press the MODE button for one second, it will beep, REVERSE and 123456 will blink. 3. Press the FLIP button until you get to the D/R setting, D/R and 12 4 will blink. 4. Press the MODE button to go to the setting. Channel 1 flashes. Use the lever to select the desired channel. The selected channel flashes. Use the up or down button to extend or shorten the path. 5. Press the MODE button to confirm and save the setting. Press the END button 2x to exit the setting. 	
CURVE EXP SETTING		
Functions	How to set up	Description
Provide users with joystick curve adjustment, improve	<ol style="list-style-type: none"> 1. power – on status 2. Press the MODE button for one second, it will beep, REVERSE and 123456 will blink. 	The joystick curve index is positive, which means that the middle of the joystick

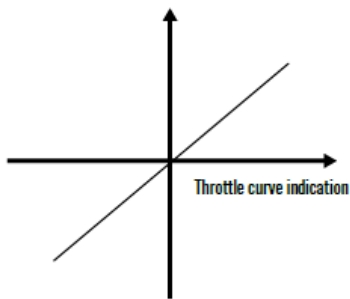
operation feel, and provide positive and negative curve adjustment of the three channels of the aileron lifting direction.	<ol style="list-style-type: none"> Press the FLIP button until you get to the EXP setting EXP flashes. Press the MODE button to enter the setting. Display 1 and the quantization digital module flash. Press the MODE button until you select the desired channel. Increase or decrease the value by scrolling up or down. Press the MODE button to accept the setting and move to the next channel. After all settings are made, press the MODE button to save them. Press the END button 2x to exit the settings. 	changes quickly and the two ends change slowly. When it is negative, the middle change is slow, and the two ends change quickly. The curve index setting value is $-100\% - +100\%$.
--	---	---

The following figure describes the effect of the curve index on the manipulated output.

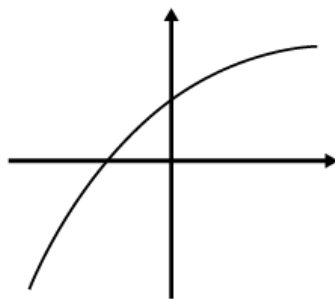


THROTTLE CURVE SETTING		
Functions	How to Set Up	Description
Provide users with linear adjustment settings of the throttle joystick to improve the feel.	<ol style="list-style-type: none"> Power – on status Press the MODE button for one second, it will beep, REVERSE and 123456 will blink. Press the FLIP button until you get to the T.Curc and 12345 flashes. Press the MODE button to enter 1 and digital module flashes, and 2345 stops flashing. Use the Up / down buttons to set the current value, up to increase the value, and down to decrease the button. Press the MODE button to save the data and skip to the next position. After Setting, press the MODE button to confirm and press the END button twice to exit the setting. 	The Throttle curve 1 2 3 4 5 represents the five positions of the throttle stroke. The default value is 0 25% 50% 75% 100%. The maximum output is set to 100%, and the minimum is 0 output. 1 and 5 represent the minimum and maximum of the throttle setting. Please set the throttle stroke according to your own needs.

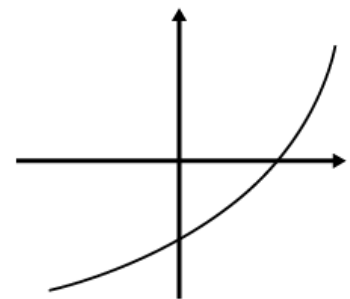
The following figure describes the effect of the throttle curve index on the output.



Default throttle curve indication



Throttle curve indication 1/0 2/40% 3/70% 4/80% 5/100%




Throttle curve indication 1/0% 2/15% 3/35% 4/60% 5/100%

CHANNEL MIXING SETTING

Functions	How to Set Up	Description
Provide users with three mixing modes commonly used in planes.	<ol style="list-style-type: none"> 8. Power – on status 9. Press the MODE button for one second, it will beep, REVERSE and 123456 will blink. 10. Press the FLIP button until you get to the T.Curc and 12345 flashes. 11. Press the MODE button to enter 1 and digital module flashes, and 2345 stops flashing. 12. Use the Up / down buttons to set the current value, up to increase the value, and down to decrease the button. 13. Press the MODE button to save the data and skip to the next position. 14. After Setting, press the MODE button to confirm and press the END button twice to exit the setting. 	<p>The Throttle curve 1 2 3 4 5 represents the five positions of the throttle stroke. The default value is 0 25% 50% 75% 100%. The maximum output is set to 100%, and the minimum is 0 output. 1 and 5 represent the minimum and maximum of the throttle setting. Please set the throttle stroke according to your own needs.</p>

Support: <https://amewi.com>

Documents / Resources

	<p>AMEWi T6REMOTE 6CH Remote Controller [pdf] Instruction Manual T6REMOTE 6CH Remote Controller, T6REMOTE, 6CH Remote Controller, Remote Controller, Controller</p>
---	--

References

- [Ferngesteuerte Fahrzeuge, Boote, Flugzeuge, Hubschrauber und Panzer - amewi.com](#)
- [Alle Wichtige Informationen zu Amewi Produkten - amewi.com](#)