



ambient weather WC-FMWAC2K Wi-Fi Weather Camera User Manual

[Home](#) » [ambient weather](#) » ambient weather WC-FMWAC2K Wi-Fi Weather Camera User Manual 

Contents

- [1 ambient weather WC-FMWAC2K Wi-Fi Weather Camera](#)
- [2 Introduction](#)
- [3 Parts List](#)
- [4 Accessories](#)
- [5 Specifications](#)
- [6 Documents / Resources](#)
 - [6.1 References](#)
- [7 Related Posts](#)



ambient weather WC-FMWAC2K Wi-Fi Weather Camera



Introduction

Thank you for your purchase of the Ambient Weather Outdoor Weather Camera. The following user guide provides step by step instructions for installation, setup, operation, and troubleshooting. To download the latest manual, compatible devices, and additional troubleshooting tips, please visit:

<https://ambientweather.com/ambcamsetup.html>

Parts List

QTY	Item
1	Camera
1	Multi-use cable
2	Mounting Screws and Anchors
1	Quick Start Guide QSG
1	20' Extension Power Cable
1	AC Adapter

Recommended Tools and Supplies

- Precision screwdriver for mounting screws
- Drill bit, if using the provided anchors
- Electrical tape for exposed power connections, if not using the optional Junction Box or Heat Shrink Tubing
- Outdoor outlet cover(s)
- Outdoor extension cord cover(s)

Camera Overview

No	Description
1	Wi-Fi Antenna
2	Infrared LED
3	Lens



Camera Setup

Multi-use Cable Overview

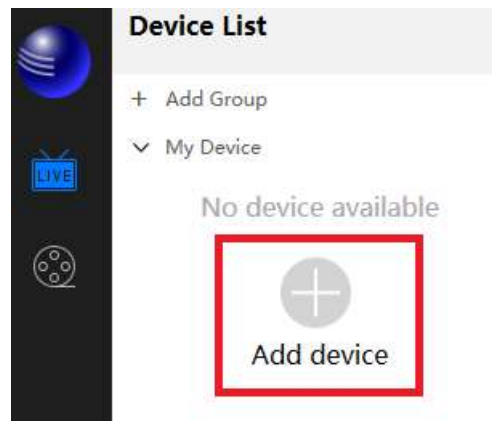
1. LAN 10/100M adaptive Ethernet interface. Through this interface, IP camera can relate to various network devices, such as hub, router, etc.
 2. Audio input interface the jack is used to plug external input device such as sound pick up device directly. Here microphone cannot directly insert to the interface, it must connect to adapter first.
 3. Audio output interface the jack is used to plug external output device such as loudspeaker directly. Here microphone cannot directly insert to the interface, it must connect to adapter first.
 4. Power Interface Connect the external power adapter, request for 12V / 1A power.
- Reset button Press and hold on the reset button for 15 seconds. Releasing the reset button, the password will back to the factory default administrator password. The default administrator user is admin with no password.



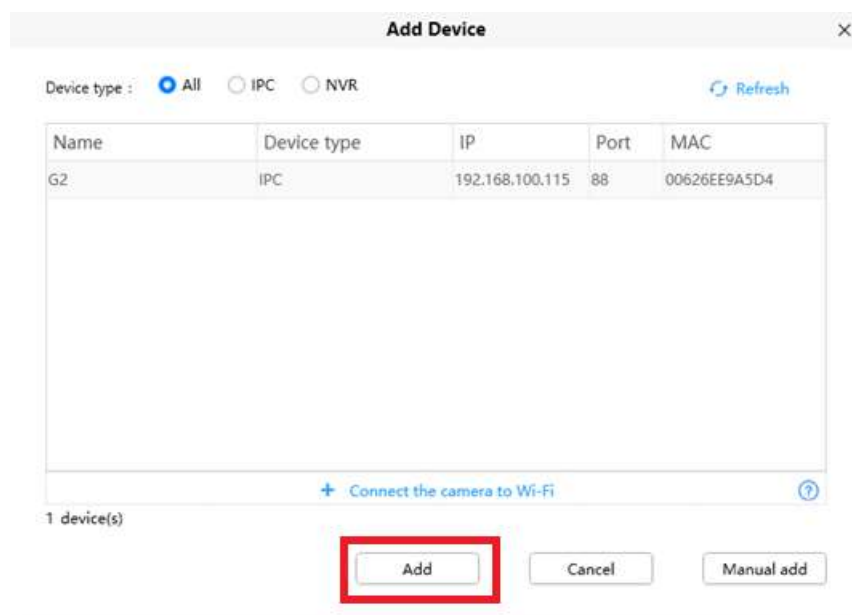
Connecting Camera to Wi-Fi

Go to [AmbientWeather.com](https://ambientweather.com/ambcamsetup.html) download and install and open the VMS software on a PC/MAC – <https://ambientweather.com/ambcamsetup.html>

- Install the Wi-Fi antenna and position upright
- Connect the provided power adapter to the camera
- Hold the reset button for 15 seconds (located on the pig tail)
- Connect the provided ethernet cable to the camera and router
- Open the VMS software, Select Add device from the Device list in the VMS software.



- Select Camera from the list and click the Add button



- Follow the on-screen instructions

×
Device account

For your security, please set a username and password for your device

Device name : G2

New user :

The maximum username length is 20, including numbers, letters and symbols: _-@\$*

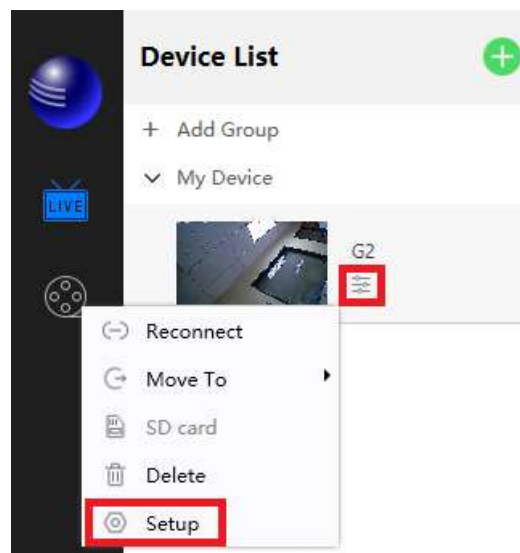
New password :

The password should be a combination of 6-12 digits, letters, symbols. Symbols support: ~!@#%^*()_+{}|<>?~\./

Confirm new password :

Create
Cancel

- Once the camera is added to the device list click the three lines below camera icon and select setup



- Select Network then Wi-Fi

×
Device Settings

- Status >
- Basic >
- **Network** ▾
- IP
- WiFi
- DDNS

Wireless network : Scan

No.	SSID	Encryption	Quality
1	Linksys2	WPA2	<div style="width: 100%; height: 10px; background: linear-gradient(to right, green, yellow, red);"></div>
2	Linksys2	WPA2	<div style="width: 100%; height: 10px; background: linear-gradient(to right, green, yellow, red);"></div>
3	AMBWxMain-A	WPA2	<div style="width: 100%; height: 10px; background: linear-gradient(to right, green, yellow, red);"></div>
4	SSID6-2.4	None	<div style="width: 100%; height: 10px; background: linear-gradient(to right, green, yellow, red);"></div>

SSID :

Encryption : None ▾

Password :

Test : Test

- Click "Scan" then choose your Wi-Fi SSID or network name

×
Device Settings

- Status >
- Basic >
- Network ▾
- IP
- WiFi
- DDNS

Wireless network : Scan

No.	SSID	Encryption	Quality
1	Linksys2	WPA2	<div style="width: 100%; height: 10px; background: linear-gradient(to right, green, yellow, red);"></div>
2	Linksys2	WPA2	<div style="width: 100%; height: 10px; background: linear-gradient(to right, green, yellow, red);"></div>
3	AMBWxMain-A	WPA2	<div style="width: 100%; height: 10px; background: linear-gradient(to right, green, yellow, red);"></div>

SSID :

Encryption : None ▾

Password :

- Enter the password for your Wi-Fi network and click "Test" to confirm successful connection then click Save

Device Settings

- Status >
- Basic >
- Network ▾
 - IP
 - WiFi**
 - DDNS
 - Port
 - P2P

Wireless network : Scan


No.	SSID	Encryption	Quality
1	Linksys2	WPA2	
2	Linksys2	WPA2	
3	AMBWxMain-A	WPA2	
4	SSID6-2.4	None	
5	SSID4-2.4	None	
6	DACB61-guest-2.4	None	

SSID :

Encryption : None ▾

Password :

Test : Test



- Select Network then FTP.

Device Settings

- Status >
- Basic >
- Network ▾
 - IP
 - WiFi
 - DDNS
 - Port
 - P2P
 - FTP**
 - Mail
 - Onvif
- Video >
- Detector >
- Record >
- System >

FTP server :

Example: ftp://192.168.1.103/dir
The maximum length of the address is 127, does not support the character: =&

Port :

Mode : ☒ PASV ☐ Port

Username :

The maximum length of the user name is 63, support numbers, letters and symbols: _@ \$% ^ * () _ + [] < > ? ' - ; \ , / & = []

Password :

The maximum length of the password is 63, support numbers, letters and symbols: ~ ! @ # \$ % ^ * () _ + [] < > ? ' - ; \ , / & = []

Test

Save Cancel

Connecting Camera to AmbientWeather.net

- Now proceed to [Ambientweather.net](https://ambientweather.net) and login. <https://ambientweather.net/welcome>

Weather is personal.™

Get real-time weather where you are, with Ambient Weather.

Create Your Account

Login

[Terms and Conditions](#)

- With a registered Weather station under the devices tab “Add Weather Cam”

W-S 1900 2.0

MAC Address: **88:4A:18:13:88:93**

Timezone: **America/Phoenix**

Location: **Chandler**

[Add Weather Cam](#) ?



- Select FTP and click Next

Connect your Weather Cam

What format does your webcam use?

FTP ☒ URL ☐

Next

[cancel](#)

- You are presented with the information below.



- Note:** please ensure you are using the following server address: <ftp://ftp.ambientweather.net>

- Press test button to confirm success and then press save The camera is now added the [Ambientweather.net](https://ambientweather.net). The image can take up to 60 minutes to appear on ambientweather.net
- If your camera is setup and is not transmitting an image to the ambientweather.net this may be caused by the snapshot feature being set with a interval which is too short. AmbientWeather.net requires a minimum interval of 60 seconds. To check this setting please open the Ambient VMS application and click the three lines next to the camera and select setup

X
Device Settings

- Status >
- Basic >
- Network >
- Video >
- Video Encode
- On Screen Display
- Snapshot
- IR LED
- Color Adjustment
- NAA
- WDR
- Detector >
- Record >
- System >

Manual snap quality : ☐ Low ☒ Medium ☐ High

Pictures save to : ☐ None ☐ SD card ☒ FTP

☒ Enable timing to capture

Capture interval : 60 (5s-65535s)

Schedule A

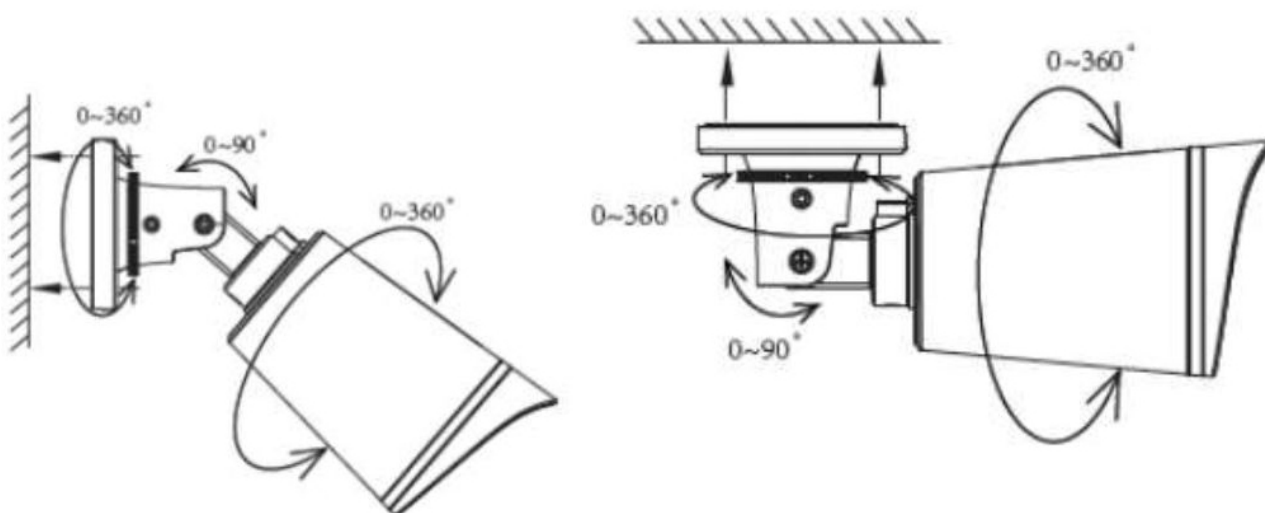
All	0	1	2	3	4	5	6	7	8	9	10	11	12	13	14	15	16	17	18	19	20	21	22	23
Mon.																								
Tues.																								
Wed.																								
Thur.																								
Fri.																								
Sat.																								
Sun.																								

Save
Cancel

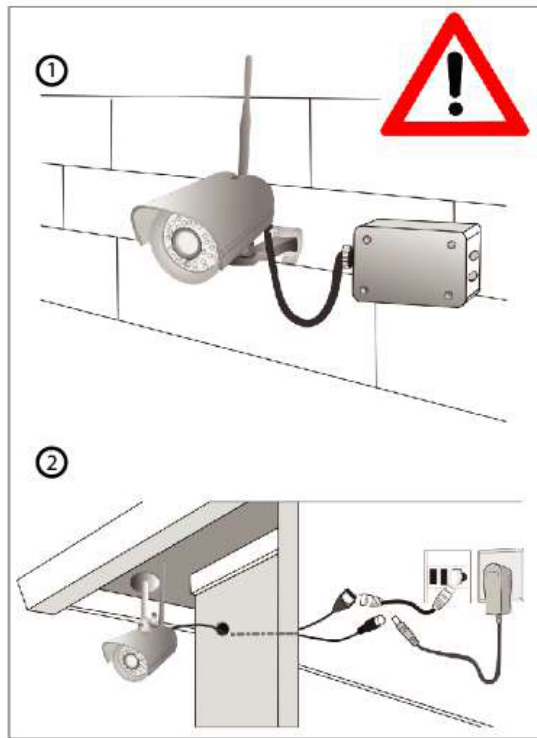
- Once in the settings and click on Video -> Snapshot
 1. Ensure the quality is set as medium and FTP,
 2. If snapshot is enabled, please ensure it is set for 60 seconds or higher

Camera Mounting

Fixate the camera on your preferred location and use screws to mount it. We have provided screws in the Packaging.



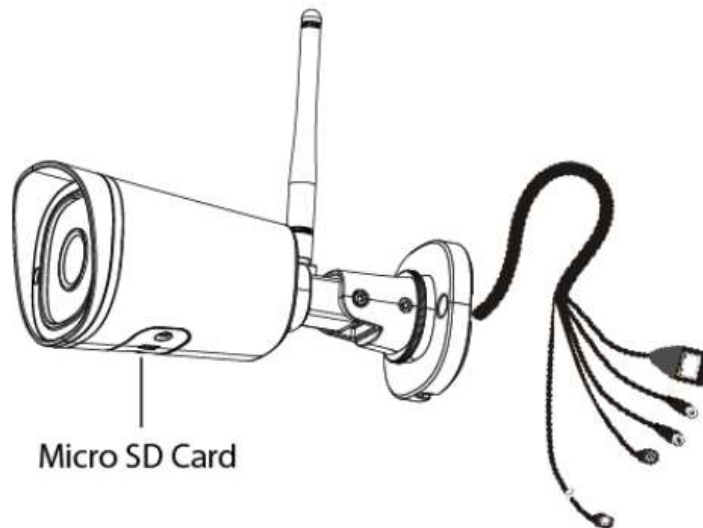
NOTE: Ensure that rain or moisture will not reach the connector ports at the end of the pig tail wiring. These connectors are not weather-resistant. The cable of an outdoor camera should, from the position where the cable is divided into several cables, be fitted dry. Install the cable into a waterproof junction box (1) or bring the cable indoors (2).



Micro SD Card slot

The Micro SD Card slot on the camera cannot be used at the same time as uploading images to AmbientWeather.net via ftp. As you can see within the VMS software settings, you can ftp images or write to the SD card. The camera does not support both functions at the same time.

Note: When a Micro SD card is inserted for recording this will turn off the FTP to AmbientWeather.net



Accessories

Accessory	Image	
WC-FMBEXTENSION33		33' AC power extension c
WC-FMWJUNCTION		Waterproof Junction Box i tance. Will protect your ca e weather.
AMBCAM-COVER		Extension Cord Safety Se appliance cords securely esistant, protecting the co ords together.
WC-HEATSHRINK		4:1 over-expanded polyole nd used for outdoor connec product fits easily over the original diameter to fit snu
SDC4-4GB		High storage capacity (16 tos. Optimal speed and pe

Specifications

Measurement Specifications

Image Sensor	Sensor	1/2.6" CMOS
	Display Resolution	2K (2304×1536)
	Min. Illumination	0 Lux (With IR Illuminator)
Lens	Lens Type	f:4mm,F2.2
	Angle of view	Horizontal:89° Diagonal : 1
	Image Compression	H.264(H.265 coming soon)

Video	Resolution	2K(2304×1536) 20fps,3MP(1204×1440)25f 25fps,720P(1280 x 720), V
	Stream	dual stream
	Image adjustment	The hue, brightness, contr table
	Flip image	flip and mirror
	Infrared mode	Automatic or manual
	IR range	With 30pcs IR-LED, Night '
Audio	Input / Output	External RCA interface for
Network	Ethernet	One 10/100Mbps RJ45 po
	Wireless Standard	EEE802.11b/g/n
	Data Rate	IEEE802.11b: 11Mbps (Ma IEEE802.11g: 54Mbps (Ma IEEE802.11n: 150Mbps (N
	Wireless Security	WPA, WPA2
	Remote Access	P2P DDNS
	Network Protocol	IP, TCP, UDP, HTTP, HTTP DHCP, DDNS, UPnP, RTSP, ONVIF
System Requirements	Operating System	Microsoft Windows 7,8,10;
	Browser	Microsoft IE9 and above ve Firefox; Google Chrome; A
Other Features	Storage	Support max 128G Micro S storage
	Firewall	Supports IP Filtering
	Reset	Reset button is available
Physical	Dimension (L * W * H)	4" (L) x 3" (W) x 2.75" 97mm (L)x67 (W)x64 (H)
	Net Weight	1lb/375g

Environment	Waterproof	IP66
	Operating Temperature	minus 4°F ~ 140°F (minus
	Operating Humidity	10% ~ 80% non-condensir
	Storage Temperature	minus 4°F ~ 140°F (minus
	Storage Humidity	0% ~ 90% non-condensing
Certification	FCC, CE, RoHS, WEEE, IP66	

Power Specifications

Power	Power Supply	DC 12V / 1.0A
	Power Consumption	5 Watts (Max.)

Wireless Specifications

- Line of sight wireless sensor array RF transmission (in open air): 330 feet, 100 feet under most conditions
- Line of sight Wi-Fi RF transmission (in open air): 80 feet
- Update Rate: Outdoor Sensor: 16 seconds, Indoor Sensor: 64 seconds
- Sensor Array RF Frequency: 915 MHz
- Wi-Fi Tablet RF Frequency: 2.4 GHz

Maintenance

We suggest regular maintenance be done to the camera to prevent / remove bugs, spider webs, etc. To remove infestations, use a soft bristle brush over the surface of the camera but avoid contacting the lense itself. If you experience issues with the electrical connections, remove all power from the device, spray electrical cleaner on the connections and gently brush with a soft bristle brush. Ambient offers a waterproof junction box and water-resistant extension cord covers to prevent direct water contact to the electrical connectors.

Liability Disclaimer

- Please help in the preservation of the environment and return used batteries to an authorized depot. The electrical and electronic wastes contain hazardous substances. Disposal of electronic waste in wild country and/or in unauthorized grounds strongly damages the environment.
- Reading the "User manual" is highly recommended. The manufacturer and supplier cannot accept any responsibility for any incorrect readings and any consequences that occur should an inaccurate reading take place.
- This product is designed for use in the home only as indication of weather conditions. This product is not to be used for medical purposes or for public safety information.
- The specifications of this product may change without prior notice.
- This product is not a toy. Keep out of the reach of children.
- No part of this manual may be reproduced without written authorization of the manufacturer.

- Ambient, LLC WILL NOT ASSUME LIABILITY FOR INCIDENTAL, CONSEQUENTIAL, PUNITIVE, OR OTHER SIMILAR DAMAGES ASSOCIATED WITH THE OPERATION OR MALFUNCTION OF THIS PRODUCT.

FCC Statement

Statement according to FCC part 15.19:

This device complies with part 15 of the FCC rules. Operation is subject to the following two conditions:

1. This device may not cause harmful interference.
2. This device must accept any interference received, including interference that may cause undesired operation.

Statement according to FCC part 15.21:

Modifications not expressly approved by this company could void the user's authority to operate the equipment.

Statement according to FCC part 15.105:

NOTE: This equipment has been tested and found to comply with the limits for a Class B digital device, pursuant to Part 15 of the FCC Rules. These limits are designed to provide reasonable protection against harmful interference in a residential installation. This equipment generates, uses, and can radiate radio frequency energy and, if not installed and used in accordance with the instructions, may cause harmful interference to radio communications. However, there is no guarantee that interference will not occur in a particular installation. If this equipment does cause harmful interference to radio or television reception, which can be determined by turning the equipment off and on, the user is encouraged to try to correct the interference by one or more of the following measures:

- Reorient or relocate the receiving antenna.
- Increase the separation between the equipment and receiver.
- Connect the equipment into an outlet on a circuit different from that to which the receiver is connected.
- Consult the dealer or an experienced radio/TV technician for help.

Warranty Information

- Ambient, LLC provides a 1-year limited warranty on this product against manufacturing defects in materials and workmanship.
- This limited warranty begins on the original date of purchase, is valid only on products purchased and only to the original purchaser of this product. To receive warranty service, the purchaser must contact Ambient, LLC for problem determination and service procedures.
- Warranty service can only be performed by a Ambient, LLC. The original dated bill of sale must be presented upon request as proof of purchase to Ambient, LLC.
- Your Ambient, LLC warranty covers all defects in material and workmanship with the following specified exceptions: (1) damage caused by accident, unreasonable use or neglect (lack of reasonable and necessary maintenance); (3) damage resulting from failure to follow instructions contained in your owner's manual; (4) damage resulting from the performance of repairs or alterations by someone other than an authorized Ambient, LLC authorized service center; (5) units used for other than personal use (6) applications and uses that this product was not intended (7) the products inability to receive a signal due to any source of interference or metal obstructions and (8) extreme acts of nature, such as lightning strikes or floods.
- This warranty covers only actual defects within the product itself and does not cover the cost of installation or

removal from a fixed installation, normal set-up or adjustments, claims based on misrepresentation by the seller or performance variations resulting from installation-related circumstances.

California Prop 65

WARNING: Use of the Ambient Weather Products can expose you to chemicals, including lead and lead compounds, which are known to the State of California to cause cancer and bis phenol A (BPA), and phosphates DINP and/or DEHP, which are known to the State of California to cause birth defects or other reproductive harm.

Can I Trust that Ambient Weather Products are Safe Despite this Warning?

In 1986, California voters approved the Safe Drinking Water and Toxic Enforcement Act known as Proposition 65 or Prop 65. The purpose of Proposition 65 is to ensure that people are informed about exposure to chemicals known by the State of California to cause cancer, birth defects and/or other reproductive harm. A company with ten or more employees that operates within the State of California (or sells products in California) must comply with the requirements of Proposition 65. To comply, businesses are: (1) prohibited from knowingly discharging listed chemicals into sources of drinking water; and (2) required to provide a “clear and reasonable” warning before knowingly and intentionally exposing anyone to a listed chemical. Proposition 65 mandates that the Governor of California maintain and publish a list of chemicals that are known to cause cancer, birth defects and/or other reproductive harm. The Prop 65 list, which must be updated annually, includes over 1,000 chemicals, including many that are commonly used in the electronics industry.

Although our manufacturing process is “lead-free” and RoHS compliant, it remains possible that trace amounts of lead could be found in components or subassemblies of Ambient Weather Products. Bisphenol A (BPSA) could conceivably be present in minute amounts in our plastic housings, lenses, labels, or adhesives, and DEHP & DINP (phthalates) could possibly be found in PVC wire coatings of our cables, housings, and power cords. Unlike RoHS, Prop 65 does not establish a specific threshold for reporting on the substances of concern and instead sets forth a much less definitive standard requiring that the business demonstrate with certainty that there is “no significant risk” resulting from exposure. With respect to carcinogens, the “no significant risk” level is defined as the level which is calculated to result in not more than one excess case of cancer in 100,000 individuals exposed over a 70-year lifetime. In other words, if you are exposed to the chemical in question at this level every day for 70 years, theoretically, it will increase your chances of getting cancer by no more than 1 case in 100,000 individuals so exposed. With respect to reproductive toxicants, the “no significant risk” level is defined as the level of exposure which, even if multiplied by 1,000, will not produce birth defects or other reproductive harm. In other words, the level of exposure is below the “no observable effect level,” divided by 1,000. (The “no observable effect level” is the highest dose level which has not been associated with observable reproductive harm in humans or test animals.) Proposition 65 does not clarify whether exposure is to be measured only in normal operation, or in the event of misuse such as intentionally damaging, incinerating or consuming an Ambient Weather Product or component and Ambient Weather has not attempted to evaluate the level of exposure.


A Proposition 65 warning means one of two things: (1) the business has evaluated the exposure and has concluded that it exceeds the “no significant risk level”; or (2) the business has chosen to provide a warning simply based on its knowledge about the presence of a listed chemical without attempting to evaluate the exposure. The California government has itself clarified that “The fact that a product bears a Proposition 65 warning does not mean by itself that the product is unsafe.” The government has also explained, “You could think of Proposition 65 more as a ‘right to know’ law than a pure product safety law.”

While using Ambient Weather Products as intended, we believe any potential exposure would be negligible or well within the “no significant risk” range. However, to ensure compliance with California law and our customers’ right to know, we have elected to place the Proposition 65 warning signs on Ambient Weather Products.








For further information about California’s Proposition 65, please visit

Documents / Resources

	<p>ambient weather WC-FMWAC2K Wi-Fi Weather Camera [pdf] User Manual WC-FMWAC2K, Wi-Fi Weather Camera, Weather Camera, WC-FMWAC2K, Camera</p>
---	---

References

-  [StackPath](#)
-  [Ambient Weather](#)
-  [Ambient Weather Outdoor Wi-Fi Weather Camera WC-FMWAC2K](#)
-  [StackPath](#)
-  oehha.ca.gov/prop65/background/p65plain.html