



AMBIENT WEATHER NETWORK AMBIENTCAM2 Solar Powered Wi-Fi Weather Camera User Guide

[Home](#) » [AMBIENT WEATHER NETWORK](#) » AMBIENT WEATHER NETWORK AMBIENTCAM2 Solar Powered Wi-Fi Weather Camera User Guide 📄

AMBIENT WEATHER NETWORK AMBIENTCAM2 Solar Powered Wi-Fi Weather Camera User Guide



Contents

1 INTRODUCTION
2 BATTERY SAFETY
3 PARTS LIST
4 SETUP
5 DEFAULT NETWORK PARAMETERS
6 SPECIFICATIONS
7 LIABILITY DISCLAIMER
8 FCC WARNING
8.1 CE MARK WARNING
8.2 WARRANTY INFORMATION
8.3 CALIFORNIA PROP 65
9 Can I Trust that AWN Products are Safe Despite this Warning?
9.1 ADDITIONAL INFORMATION
9.2 CUSTOMER SERVICE
9.3 Documents / Resources
9.3.1 References
9.4 Related Posts

INTRODUCTION

Thank you for your purchase of the AMBIENTCAM2 Solar-Powered Wi-Fi Weather Camera. The following user guide provides step by step instructions for installation, operation, and troubleshooting. To download the latest manual or firmware, visit: <https://support.ambientweather.com/hc/en-us/search?&query=AMBIENTCAM2>

BATTERY SAFETY



The camera is not designed for continuous 24/7 operation at full capacity or constant live streaming. It is intended to record at regular intervals to transmit weather conditions to Ambient Weather Network.

- The battery is built-in, so refrain from removing it from the camera.
- Charge the rechargeable battery using a standard DC 5V battery charger or the included solar panel. Do not charge the battery with solar panels from any other brands.
- Only charge the battery when the environmental temperature is between 32°F to 113°F (0°C to 45°C). The battery's nominal operational temperature range is between -4°F to 140°F (-20°C to 60°C).
- Keep the USB charging port dry, clean, and free of any debris. Cover the USB charging port with the rubber plug when the battery is fully charged.
- Do not charge, use, or store the battery near any ignition sources, such as fire or heaters.
- Do not use the battery if it emits an odor, generates heat, becomes discolored or deformed, or appears abnormal in any way. If any of these occur while battery is being used or charged, immediately remove the battery from the device or charger and cease using it.
- Always adhere to local waste and recycling laws when disposing of the used battery.
- Fully charge the battery before first use.
- Use the included standard USB-C cable for charging to avoid charging failure.

PARTS LIST

QTY	ITEM	IMAGE
-----	------	-------

1	<p>Ambient Cam2 Wi-Fi Weather Camera</p> <p>Dimensions</p> <p>Height: 8.35" Width: 5.59" Depth: 7.32"</p>	 A white and black dome-shaped weather camera with two white antennas on top. The front face is black and features a lens surrounded by several small yellow LEDs. The brand name 'AWN' is printed in blue on the white upper housing. A white USB-C cable is connected to the back of the device.
1	<p>Solar Panel</p> <p>Dimensions</p> <p>Height: 6.81" Width: 4.72"</p>	 A rectangular solar panel with a black monocrystalline surface and a white border. It is shown at a slight angle.
1	<p>USB-C Cable</p>	 A white, braided USB-C to USB-A cable. One end has a USB-C connector, and the other has a standard USB-A connector. The cable is coiled.

1	Solar Panel Bracket	
1	Mounting Hardware Packet	

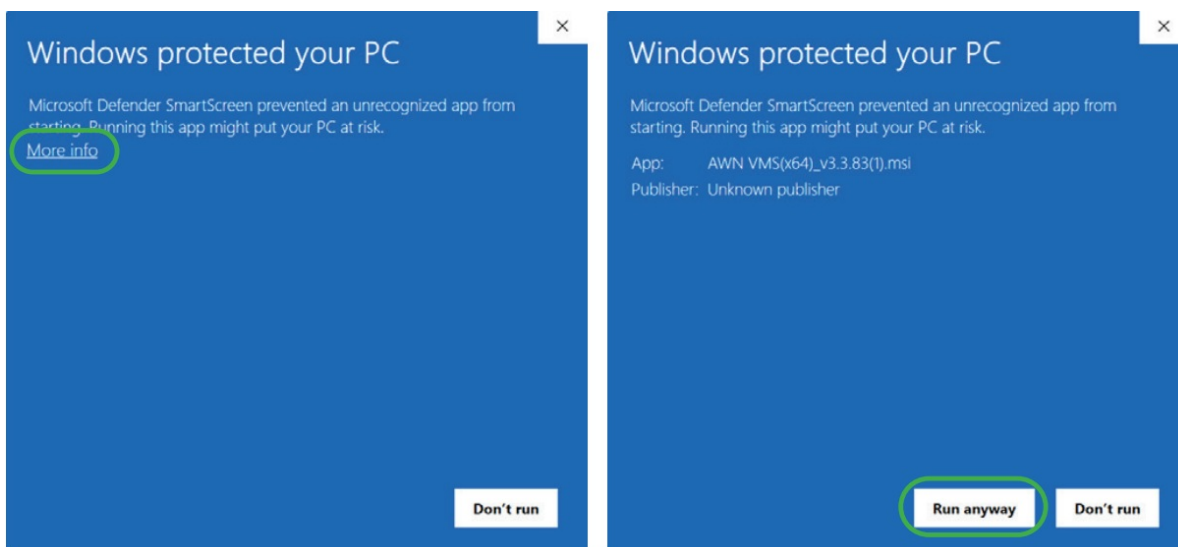
SETUP

While indoors and near a PC/Mac, position the Wi-Fi antennas upright.

NOTE: If a micro SD card is installed, the camera will not connect to AWN. Please do not insert one.

We suggest completing all steps indoors before mounting the camera.

1. Download the VMS software from [AmbientWeather.com](https://ambientweather.com/ambcamsetup.html) (<https://ambientweather.com/ambcamsetup.html>) for either a PC or MAC. Double click downloaded file to install.
2. If presented with a security tab, select “More info,” then “Run anyway”.



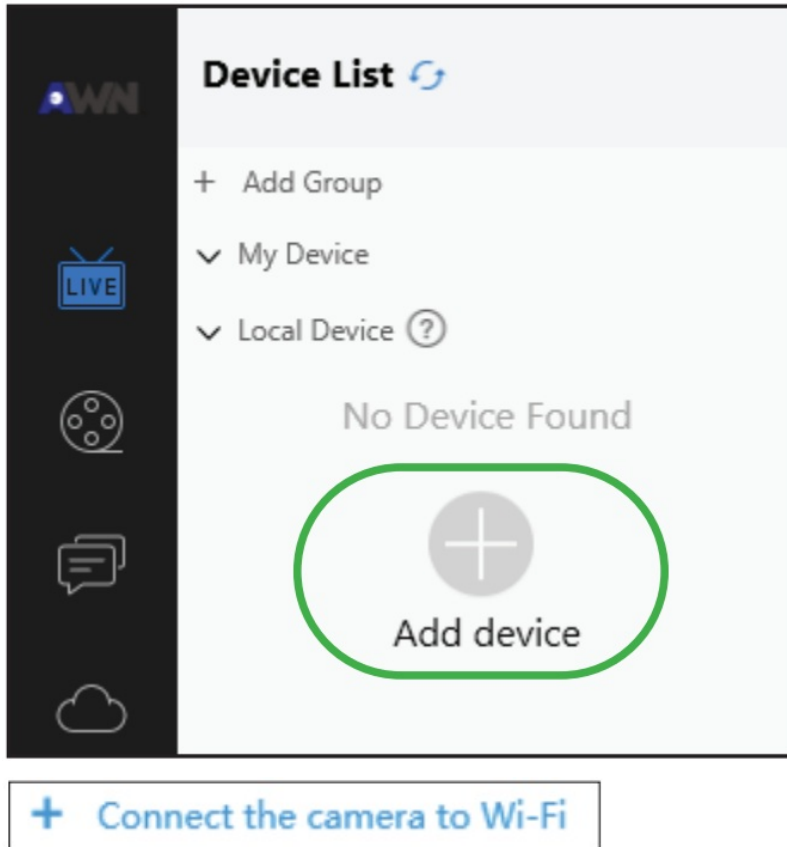
3. Open the VMS by double-clicking the AWN VMS icon that is now on your desktop. If presented with

a tab asking you to allow the app to make changes to device, click yes.

4. When opening the VMS software you'll be asked to create an account. Select Cloud and sign up on the next window. You will receive a confirmation email to confirm your account. Once registered and confirmed, open the app again and click Login.

NOTE: Be sure to save all usernames and passwords during this process.

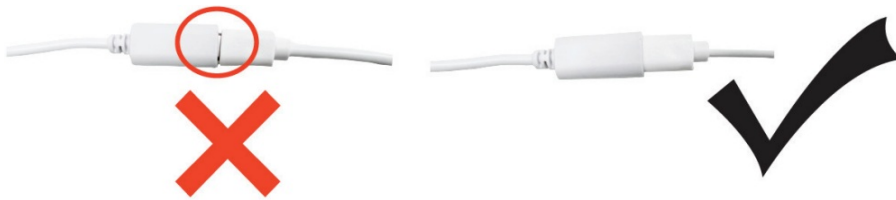
5. Click "Add Device" button on the top left of the window. In the panel that opens, click "Connect the camera to Wi-Fi."



6. In the next panel, enter your Wi-Fi name and password then click "next." A QR Code will appear.
7. Open the rubber protective seal on the back of the camera and turn it on. When you do, you will hear a voice stating, "Ready for Wi-Fi configuration."



8. If you do not hear a voice, the battery may need to be charged. Plug the camera into the wire protruding from the camera. Be sure to fully seat the connector until it clicks.



9. Point the camera at the QR code on your screen. It will beep and confirm connection. Click "confirm" on the QR screen.
10. Select the camera on the "Add Device" screen and click "Add" in the lower part of the screen.

Add Device

Device type : ☒ All ☐ IPC ☐ NVR

Refresh

Name		Device type	IP	Port	MAC
AMBIENTCAM2	✓	IPC	10.0.0.121	8888	684E05E4F6E7

+ Connect the camera to Wi-Fi

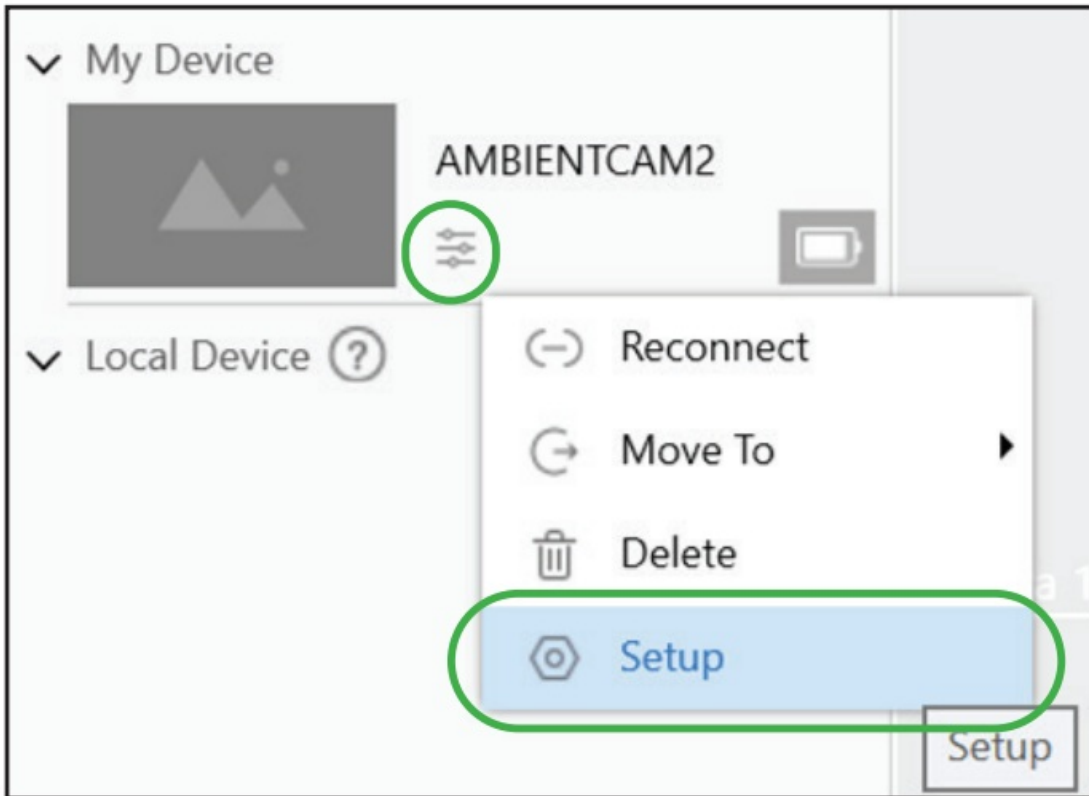
1 device(s)

Add

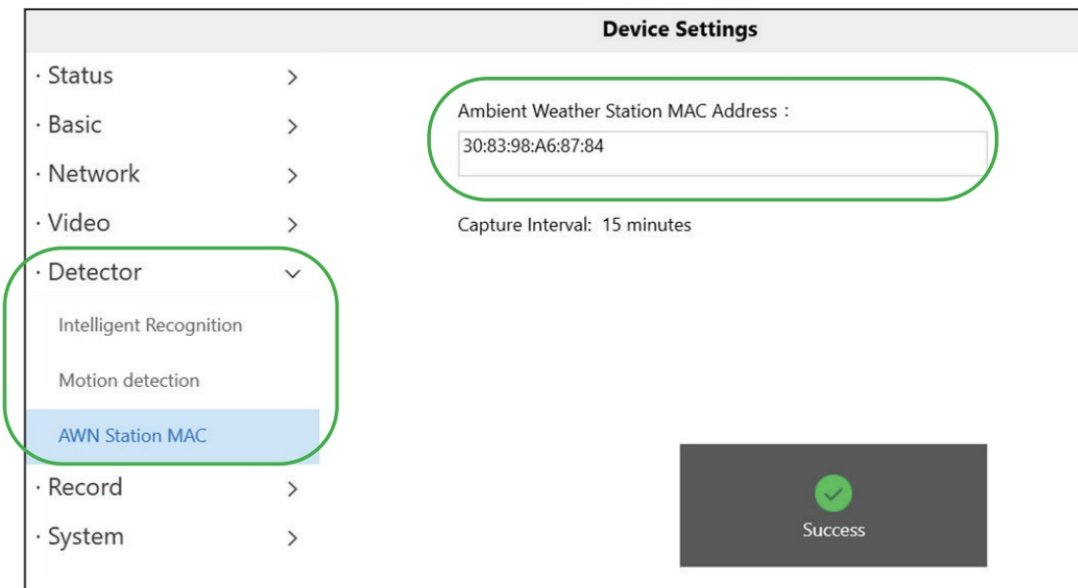
Cancel

Manual add

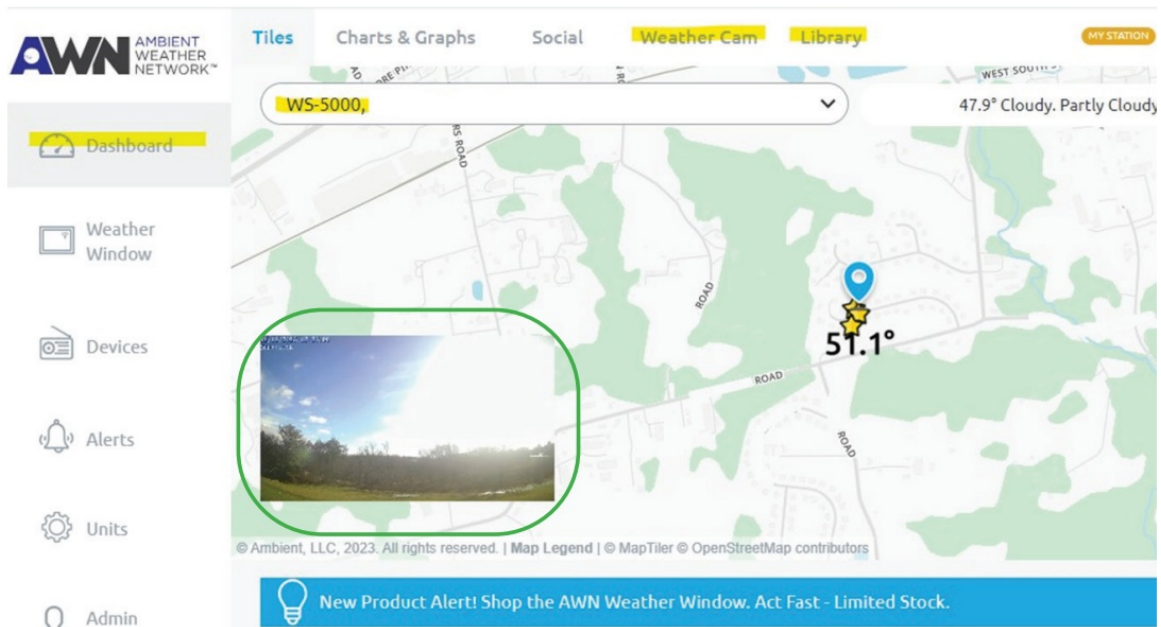
11. Choose and enter a username and password for the camera then click “Create.” Once the camera connects, it will indicate success and you may click “Cancel” on the “Add device screen”
12. Now that your camera is added, select the camera under “My Device” and click the Settings Icon. Then click “Setup.”



13. To connect to AWN, select “Detector” in Device Settings, then “AWN Station MAC.” Enter the MAC address for your console/ObserverIP/ WeatherHub. You may now exit the VMS software and mount your camera outside.



14. When you access your dashboard on AWN, your image will be seen inserted into the map view.



DEFAULT NETWORK PARAMETERS

IP address: obtain dynamically

Subnet mask: obtain dynamically

Gateway: obtain dynamically

SPECIFICATIONS

ITEMS	SPECIFICATION	VALUE
Spotlight	Color Temperature	6500K
	Offset	Current Value
Image Sensor	Sensor Type	High Definition Color CMOS Sensor
	Display Resolution	4.0Megapixels(2560*1440)
	Min. Illumination	0 Lux (With IR Illuminator)
Lens	Lens Type	f:3mm; vF2.0
	Angle of view	Diagonal: 113.5°, Horizontal:98°,Vertical: 51°
Wi-Fi	Wireless Standard	IEEE802.11b/g/n
	Wireless Security	WPA, WPA2
	Remote Access	P2P
	Network Protocol	IP, TCP, UDP
VMS Requirements	Operating System	Microsoft Windows, MacOS
Power	Battery	5000mAh rechargeable battery(battery life varies based on settings usage & temperature)
	Solar	3W Solar Panel
	DC Power	DC 5V/1A USB poweradapter (Not standard)
Physical	Dimensions (L×W×H)	21.21 × 18.59 × 14.20 CM(8.35 × 7.32 × 5.59 inches)
	Net Weight	770g
Environment	Waterproof	IP65
	Operating Temperature	-20°C~ 60°C
	Operating Humidity	10% ~ 80% non-condensing
	Storage Temperature	-20°C ~ 60°C
	Storage Humidity	0% ~ 90% non-condensing
	Battery Charging Temperature	0°C~ 45°C (30°F ~113 °F)
Certification	FCC, CE, RoHS, WEEE, IP65	

LIABILITY DISCLAIMER

- Please help in the preservation of the environment and return used batteries to an authorized depot.
- The electrical and electronic wastes contain hazardous substances. Disposal of electronic waste in wild country and/or in unauthorized grounds strongly damages the environment.
- Reading this user manual is highly recommended. The manufacturer and supplier cannot accept any responsibility for any incorrect readings and any consequences that occur should an inaccurate reading take place.

- This product is designed for use in the home only as indication of weather conditions.
This product is not to be used for medical purposes or for public safety information.
- The specifications of this product may change without prior notice.
- This product is not a toy. Keep out of the reach of children.
- No part of this manual may be reproduced without written authorization of the manufacturer.
- Ambient, LLC WILL NOT ASSUME LIABILITY FOR INCIDENTAL, CONSEQUENTIAL, PUNITIVE, OR OTHER SIMILAR DAMAGES ASSOCIATED WITH THE OPERATION OR MALFUNCTION OF THIS PRODUCT.

FCC WARNING

This device complies with Part 15 of the FCC Rules. Operation is subject to the following two conditions:

1. This device may not cause harmful interference, and (2) this device must accept any interference received, including interference that may cause undesired operation.

NOTE: This equipment has been tested and found to comply with the limits for a Class B digital device, pursuant to Part 15 of the FCC Rules. These limits are designed to provide reasonable protection against harmful interference in a residential installation. This equipment generates, uses, and can radiate radio frequency energy and, if not installed and used in accordance with the instructions, may cause harmful interference to radio communications.

However, there is no guarantee that interference will not occur in a particular installation. If this equipment does cause harmful interference to radio or television reception, which can be determined by turning the equipment off and on, the user is encouraged to try to correct the interference by one or more of the following measures:

- Reorient or relocate the receiving antenna.
- Increase the separation between the equipment and receiver.
- Connect the equipment into an outlet on a circuit different from that to which the receiver is connected.
- Consult a dealer or an experienced radio/TV technician for help.

This equipment complies with FCC radiation exposure limits set forth for an uncontrolled environment. This equipment should be installed and operated with a minimum distance of 20cm between the radiator and your body.

NOTE: *Any changes or modifications to this unit not expressly approved by the party responsible for compliance could void the user's authority to operate the equipment.*

CE MARK WARNING

This is a Class A product. In a domestic environment, this product may cause radio interference, in which case the user may be required to take adequate measures.

WARRANTY INFORMATION

Ambient, LLC provides a 1-year limited warranty on this product against manufacturing defects in materials and workmanship.

This limited warranty begins on the original date of purchase, is valid only on products purchased and only to the original purchaser of this product. To receive warranty service, the purchaser must contact Ambient, LLC for

problem determination and service procedures.

Warranty service can only be performed by an Ambient, LLC. The original dated bill of sale must be presented upon request as proof of purchase to Ambient, LLC.

Your Ambient, LLC warranty covers all defects in material and workmanship with the following specified exceptions: (1) damage caused by accident, unreasonable use or neglect (lack of reasonable and necessary maintenance); (3) damage resulting from failure to follow instructions contained in your owner's manual; (4) damage resulting from the performance of repairs or alterations by someone other than an authorized Ambient, LLC authorized service center; (5) units used for other than personal use (6) applications and uses that this product was not intended (7) the products inability to receive a signal due to any source of interference or metal obstructions and (8) extreme acts of nature, such as lightning strikes or floods.

This warranty covers only actual defects within the product itself and does not cover the cost of installation or removal from a fixed installation, normal set-up or adjustments, claims based on misrepresentation by the seller or performance variations resulting from installation-related circumstances.

CALIFORNIA PROP 65

WARNING: Use of this AWN product can expose you to chemicals, including lead and lead compounds, which are known to the State of California to cause cancer and bisphenol A (BPA), and phthalates DINP and/ or DEHP, which are known to the State of California to cause birth defects or other reproductive harm.

Can I Trust that AWN Products are Safe Despite this Warning?

In 1986, California voters approved the Safe Drinking Water and Toxic Enforcement Act known as Proposition 65 or Prop 65. The purpose of Proposition 65 is to ensure that people are informed about exposure to chemicals known by the State of California to cause cancer, birth defects and/or other reproductive harm. A company with ten or more employees that operates within the State of California (or sells products in California) must comply with the requirements of Proposition 65. To comply, businesses are: (1) prohibited from knowingly discharging listed chemicals into sources of drinking water; and (2) required to provide a "clear and reasonable" warning before knowingly and intentionally exposing anyone to a listed chemical. Proposition 65 mandates that the Governor of California maintain and publish a list of chemicals that are known to cause cancer, birth defects and/or other reproductive harm. The Prop 65 list, which must be updated annually, includes over 1,000 chemicals, including many that are commonly used in the electronics industry.

Although our manufacturing process is "lead-free" and RoHS compliant, it remains possible that trace amounts of lead could be found in components or sub assemblies of AWN Products. Bisphenol A (BPSA) could conceivably be present in minute amounts in our plastic housings, lenses, labels, or adhesives, and DEHP & DINP (phosphates) could possibly be found in PVC wire coatings of our cables, housings, and power cords. Unlike RoHS, Prop 65 does not establish a specific threshold for reporting on the substances of concern and instead sets forth a much less definitive standard requiring that the business demonstrate with certainty that there is "no significant risk" resulting from exposure. With respect to carcinogens, the "no significant risk" level is defined as the level which is calculated to result in not more than one excess case of cancer in 100,000 individuals exposed over a 70-year lifetime. In other words, if you are exposed to the chemical in question at this level every day for 70 years, theoretically, it will increase your chances of getting cancer by no more than 1 case in 100,000 individuals so exposed. With respect to reproductive toxicants, the "no significant risk" level is defined as the level of exposure which, even if multiplied by 1,000, will not produce birth defects or other reproductive harm. In other words, the level of exposure is below the "no observable effect level," divided by 1,000. (The "no observable effect level" is the highest dose level which has not been associated with observable reproductive harm in humans or test animals.) Proposition 65 does not clarify whether exposure is to be measured only in normal operation, or in the event of misuse such as intentionally damaging, incinerating or consuming an AWN Product or component and Ambient Weather has not attempted to evaluate the level of exposure.

A Proposition 65 warning means one of two things: (1) the business has evaluated the exposure and has concluded that it exceeds the "no significant risk level"; or (2) the business has chosen to provide a warning simply

based on its knowledge about the presence of a listed chemical without attempting to evaluate the exposure.

The California government has itself clarified that “The fact that a product bears a Proposition 65 warning does not mean by itself that the product is unsafe.” The government has also explained, “You could think of Proposition 65 more as a ‘right to know’ law than a pure product safety law.”

While using AWN Products as intended, we believe any potential exposure would be negligible or well within the “no significant risk” range. However, to ensure compliance with California law and our customers’ right to know, we have elected to place the Proposition 65 warning signs on AWN Products.

For further information about California’s Proposition 65, please visit

<https://oehha.ca.gov/prop65/background/p65plain.htm>

ADDITIONAL INFORMATION

For additional product information, documentation, and downloads, please scan this QR code to access the downloads page.

CUSTOMER SERVICE

Email Support: support@ambientweather.com

Technical Support: [480-346-3380](tel:480-346-3380) (M-F 8am to 4pm Arizona Time)


©Copyright 2024, Ambient LLC. All Rights Reserved.



AMBIENTCAM2_Manual_0_24.02.09



Documents / Resources

	<p>AMBIENT WEATHER NETWORK AMBIENTCAM2 Solar Powered Wi-Fi Weather Camera [pdf] User Guide</p> <p>AMBIENTCAM2, AMBIENTCAM2 Solar Powered Wi-Fi Weather Camera, Solar Powered Wi-Fi Weather Camera, Wi-Fi Weather Camera, Weather Camera, Camera</p>
---	---

References

- oehha.ca.gov/prop65/background/p65plain.html
- [Ambient Weather](#)
- [User Manual](#)

Manuals+. Privacy Policy

This website is an independent publication and is neither affiliated with nor endorsed by any of the trademark owners. The "Bluetooth®" word mark and logos are registered trademarks owned by Bluetooth SIG, Inc. The "Wi-Fi®" word mark and logos are registered trademarks owned by the Wi-Fi Alliance. Any use of these marks on this website does not imply any affiliation with or endorsement.