



## amazon Smart Plug Work with Alexa User Manual

[Home](#) » [Amazon](#) » amazon Smart Plug Work with Alexa User Manual 

### Contents

- [1 Amazon Smart Plug Work with Alexa](#)
- [2 Specifications](#)
- [3 Control with App](#)
- [4 Control with amazon Alexa / Google Assistant](#)
- [5 Documents / Resources](#)
- [6 Related Posts](#)



### Amazon Smart Plug Work with Alexa



## Specifications

- Power Supply: AC 100-240V, 50/60 Hz
- Load Current: 10A Max. Resistive load
- Wi-Fi Standard: Only Supports 2.4GHz Network
- IEEE 802.11 b/g/n
- Operation temperature: -20°C to +55°C

## Control with App

### Download the App.

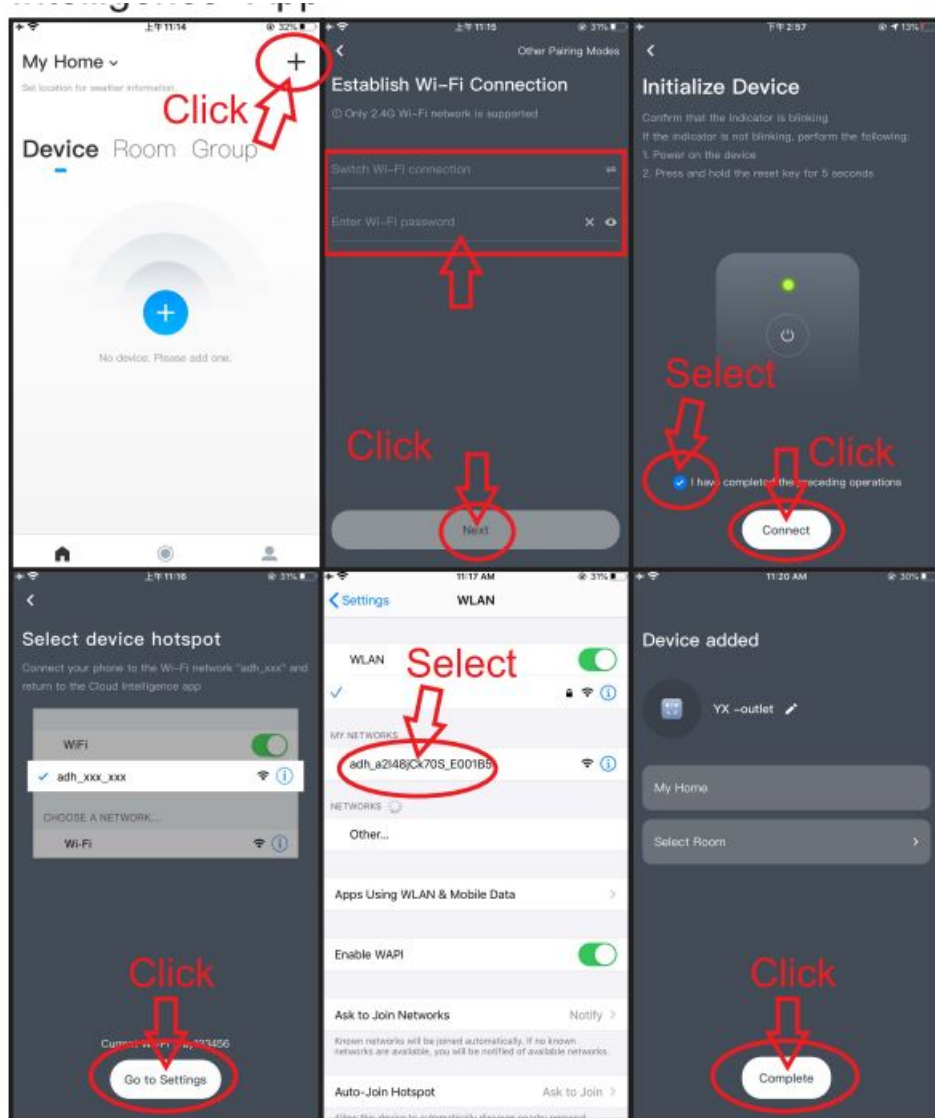
You can scan the QR code to download App. You can also search “Cloud Intelligence” App in either App Store or Google Play to install.

### Register App.

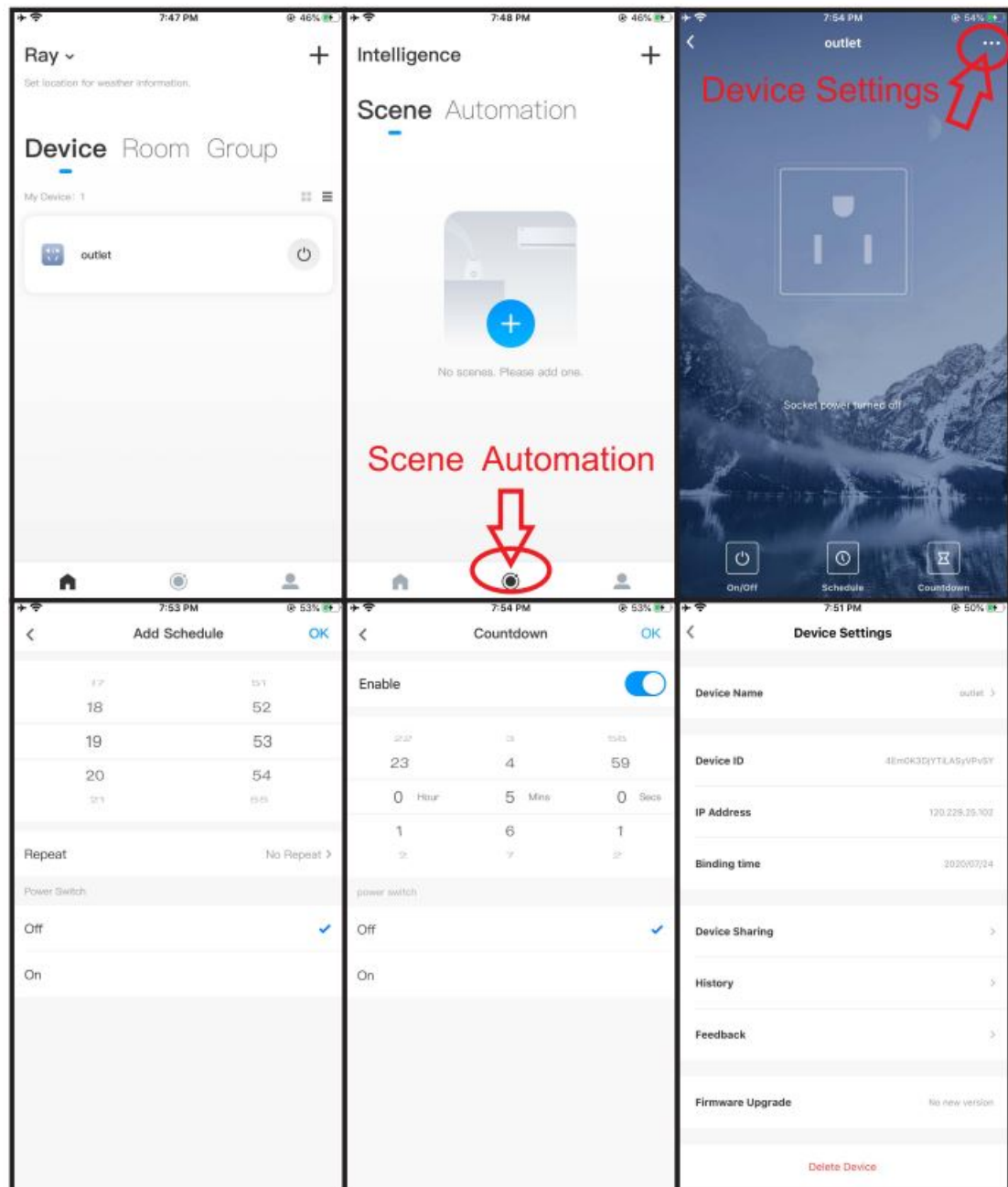
Run the App. Login with your account & password. For the first time using, you have to register a new account.

### Add new devices

Connect your phone to the local Wi-Fi first. Please press and hold the Button for 5 seconds until the indicator is blinking. On the App “Cloud Intelligence”, Click “+”, Click “Add Manually”, select “Electrical Lighting”. Click the “Socket ( Wi-Fi ) ” icon to add a device. Select the Wi-Fi which the mobile phone is connected, enter the Wi-Fi password, and click “NextConfirm that the indicator is blinking. If not, please press and hold the Button for 5 seconds until the indicator is blinking. DSelect “I have completed the preceding operations”, then click “Connect”Click“Go to Settings”, Go to your phone WLAN setting to find the network ” adh\_ xxx\_ XXx” and connect to it, then go back to the “Cloud Intelligence” App.

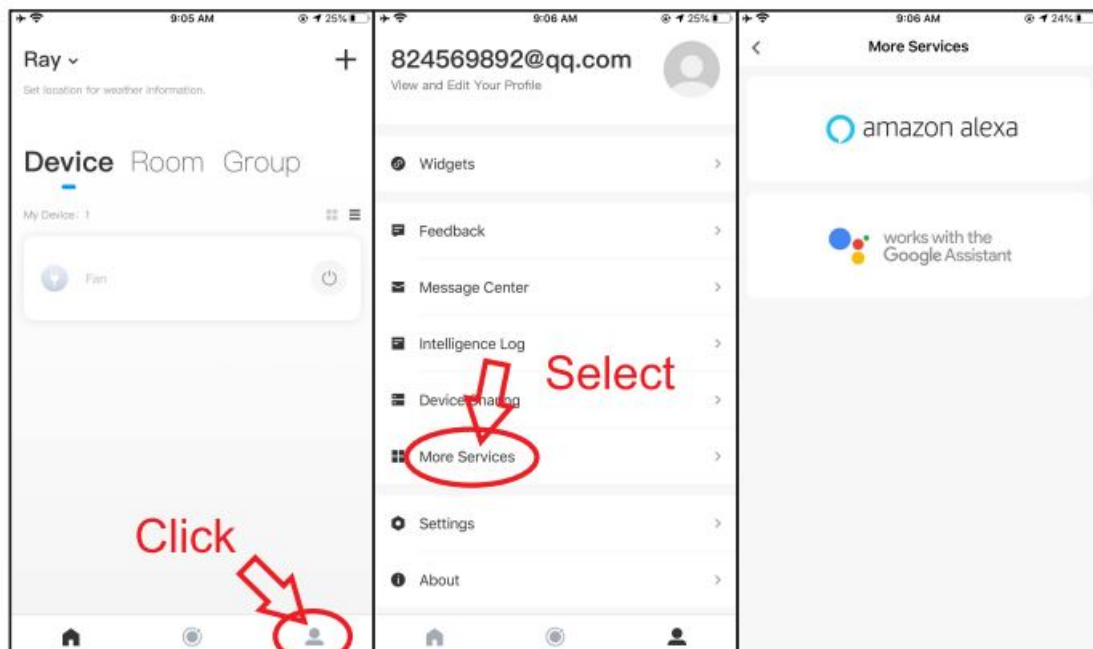


Now, You can Control devices on “Cloud Intelligence” App.



## Control with amazon Alexa / Google Assistant

Click the "2" on the "Cloud Intelligence" App, Select "More Services". Base on your smart speaker to choose "amazon alexa" or "Google Assistant".



Follow the binding steps one by one, you can add voice control to your smart plug Now, you can use your voice to control your smart devices: (amazon alexa ) Alexa, turn on/off the bedroom light. (Google Assistant ) OK Google, turn on/off bedroom light.

## WARNING

- Plug in fully to the wall outlet while using.
- Do not insert a conductor or other tools to the socket hole.
- If there is radio frequency interference, it might affect the operation.
- Indoor use only.
- Do not use in bathroom and other damp locations.
- Please ensure the security of the electricity, resistive load current 10A Max.
- Please keep the device out of the reach of children to avoid danger.

## Documents / Resources

	<a href="#">amazon Smart Plug Work with Alexa</a> [pdf] User Manual Smart Plug Work with Alexa
---	---