



amazon Cloud WiFi Camera Instruction Manual

[Home](#) » [Amazon](#) » amazon Cloud WiFi Camera Instruction Manual 

Cloud WiFi Camera Operation Manual

CLOUD-BASED STORAGE SERVICE
30 DAYS FREE EXPERIENCE
HIGHER-END AND SAFER STORAGE



Dear users, you are welcome to choose this product. Before using the product, please read the instruction manual carefully and keep it for later reference

Contents

- 1 Main Function Description
- 2 How To Download Mobile APP
- 3 How To Operate The Mobile APP
 - 3.1 Register an account
 - 3.2 Add camera
 - 3.3 AP Direct mode (special)
- 4 Function introduction
 - 4.1 PTZ/ Preset
 - 4.2 Video playback
 - 4.3 Video clip
 - 4.4 Download cloud video/share cloud video
 - 4.5 cloud video playback
- 5 Preferences
 - 5.1 Cloud Storage service
 - 5.2 Set TF card recording Mode
 - 5.3 Notification settings
 - 5.4 Other functions settings
- 6 Split-screen to watch Only for multiple equipments under the same account)
- 7 How to use a camera on a computer
- 8 Frequently asked questions
- 9 Documents / Resources
 - 9.1 References
- 10 Related Posts

Main Function Description



How To Download Mobile APP

- Search and download “YCC365 Plus” in Apple Store or Android app store.
- Scan the QR code as below



<https://www.closeli.com/app/1536548438173>

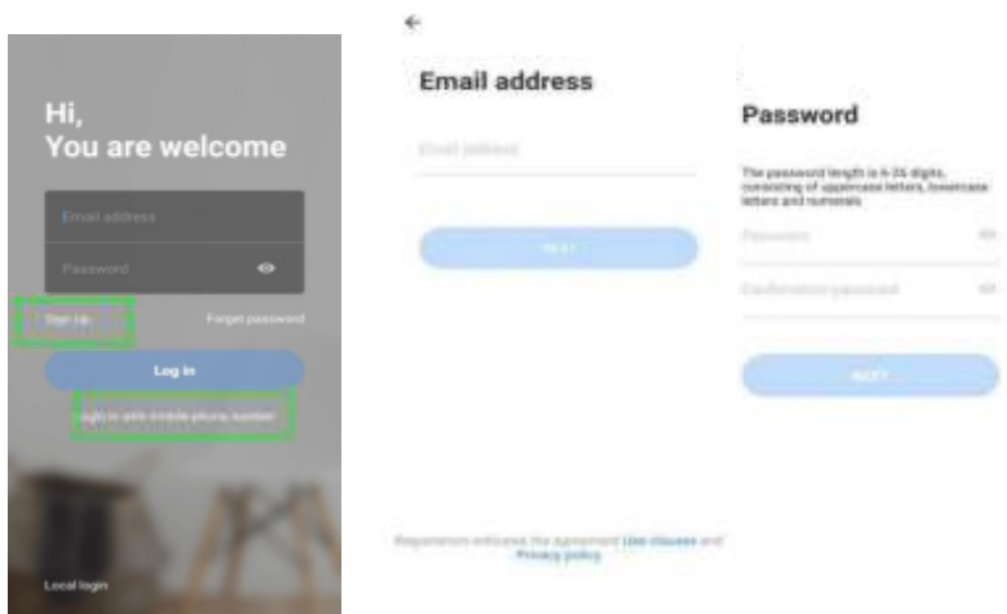
How To Operate The Mobile APP

Register an account

When you use this app at the first time, you need to use your email to register an account, click “Sign Up” and set a password according to this procedure.

*If you forget your password, you can reset your password, just click “Forgot password” on the login page.

*Password should be at least 6 characters and no longer than 30 characters. It should be a combination of letters and numbers.



Tips: the current version only supports mobile phone number registration in Vietnam.
Please use email to register in other areas

Add camera

Note: the camera only supports 2.4G WIFI, before adding devices, make sure your router is 2.4G WIFI, and your phone is connected to 2.4G WIFI.

Scan QR code to add

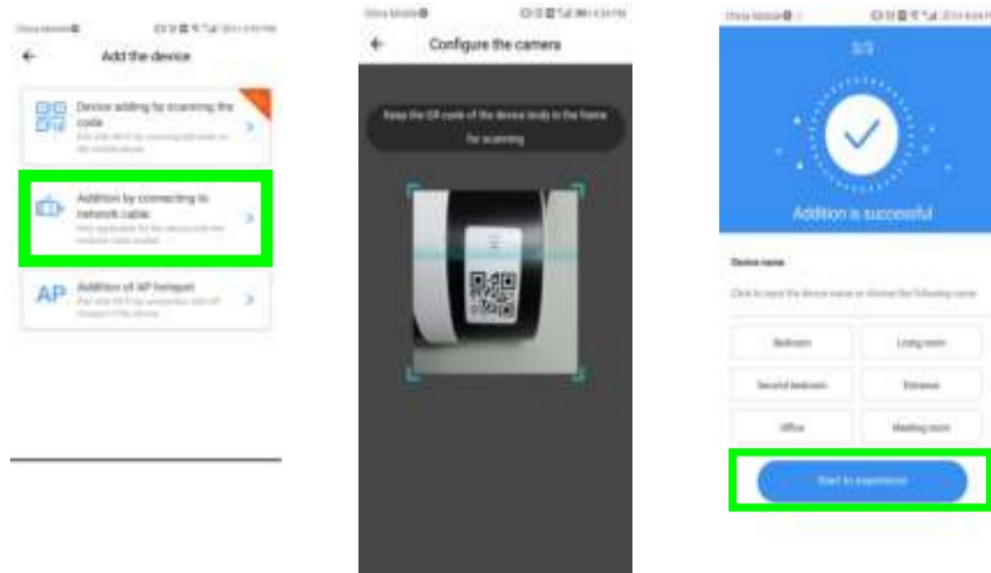
Please make your phone connect to the Wi-Fi, and then click “Device adding by scanning the code”, reset the camera, after hearing the voice “**Please configure camera by scanning code or AP hotspot**”, please click the “Connect to the network”.

- Select your own Wi-Fi and log in with your password.
- Align the two-dimensional code displayed on the phone with the camera lens, maintain a distance of 4-8 inches and keep balance.
- Click “I heard the beep voice” after hearing the beep, a few seconds later, you will hear the voice “Internet-connected welcome to use cloud camera”.



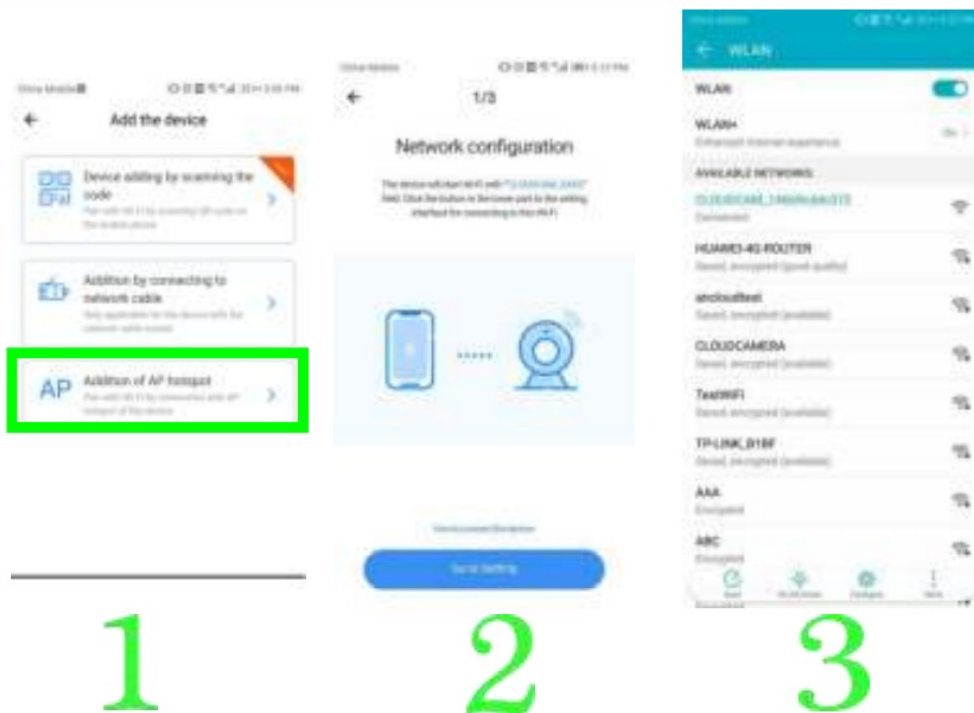
In addition by connecting to network cable (Only support Lan port device)

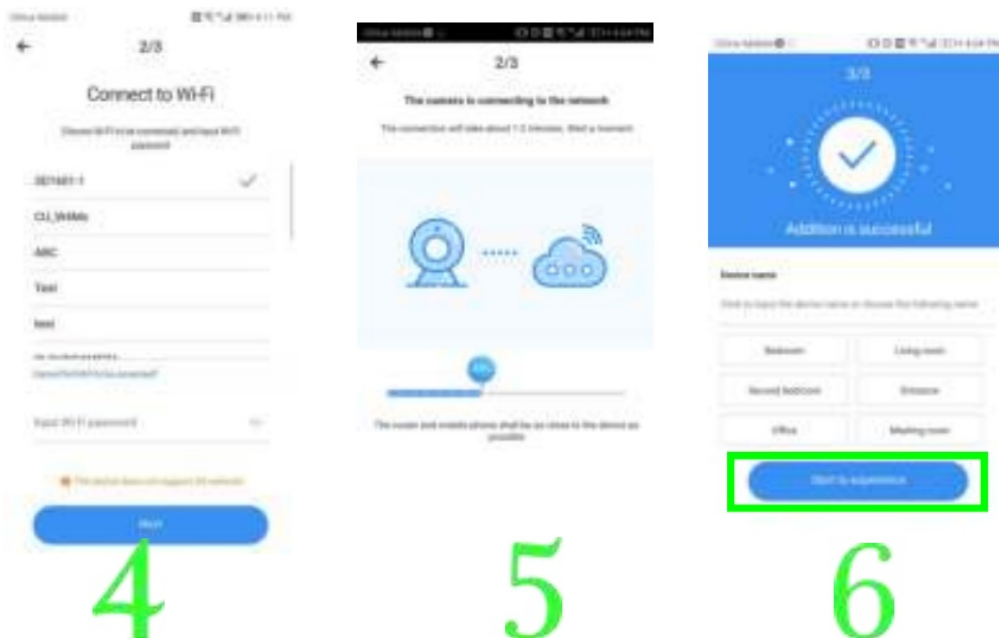
- Please connect the Ethernet cable between the camera and the Wi-Fi router.
- After your phone connect to the Wi-Fi, Click “Add device” and “Addition by connecting to network cable”
- Please scan the QR code on the device and wait for the network connection to succeed.



Addition of AP hotspot

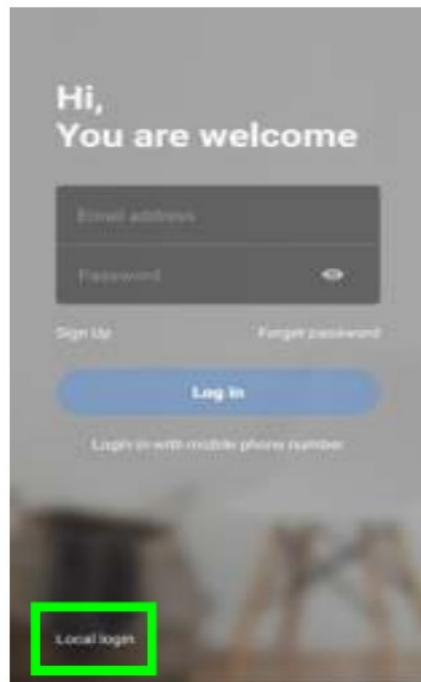
- After your phone connects to Wi-Fi, please click “Add device” and “Addition of AP hotspot”, after hearing the voice “**Please configure camera by scanning code or AP hotspot**”, please click the “Connect to the network”.if you do not hear the voice, please reset your camera.
- Follow the wizard to make your phone connect to the “CLOUDCAM_XXXX” network and Return to YCC365 plus app.
- Click “Next ” and select your own Wi-Fi and log in with your password.
- Wait for the Wi-Fi connection to succeed then Hear the voice “Internet-connected welcome to use cloud camera”





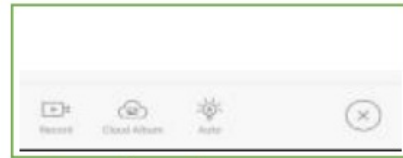
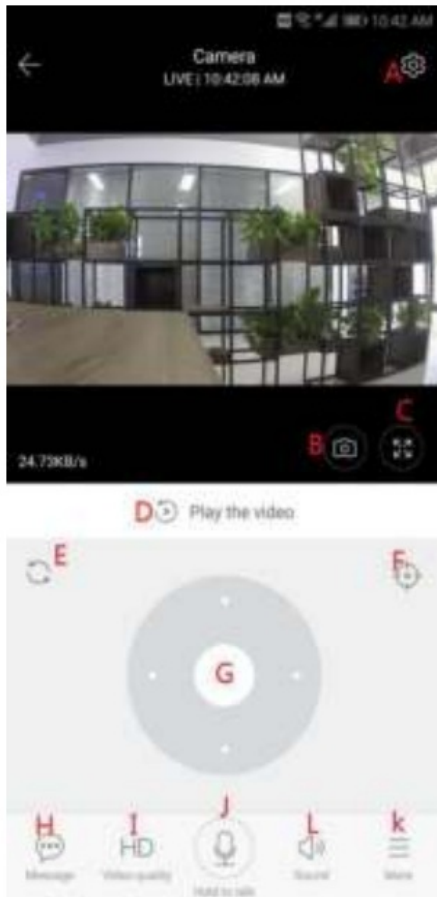
AP Direct mode (special)

- Power up the camera and hear the voice “**Please configure camera by scanning code or AP hotspot**” (if you don’t hear the voice, reset the camera)
- Open the YCC365 plus app to enter the login interface, click “Local login”.
- Make your phone connect to the “CLOUDCAM_XXXX” network ”
- Click “AP networked device preview” and Click “Next”.
- Scanning the device in the Wi-Fi network, then click the device.
- Enter user name: **admin** password: **12345**, click “CONFIRM”, then you can preview the screen.



Function introduction

Real-time preview interface



Control white light
View cloud albums
Video to the phone.

A: Parameter Menu	K: More
C: Full Screen	B: Snapshot
E: pan-tilt reset	D: Video playback
G: Pan&Tilt	F: Preset
I: Video quality	H: Message
L: Sound	J: Hold to talk

PTZ/ Preset

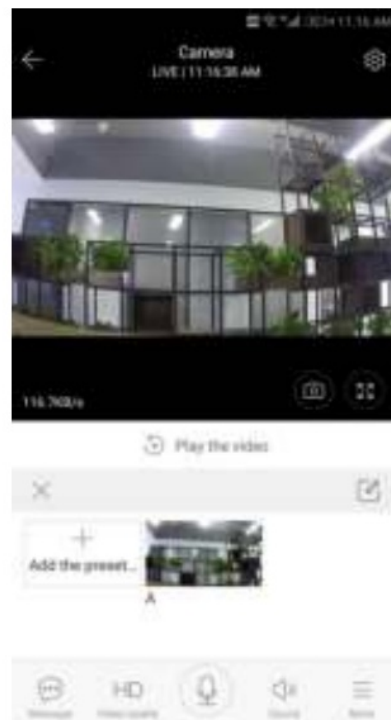
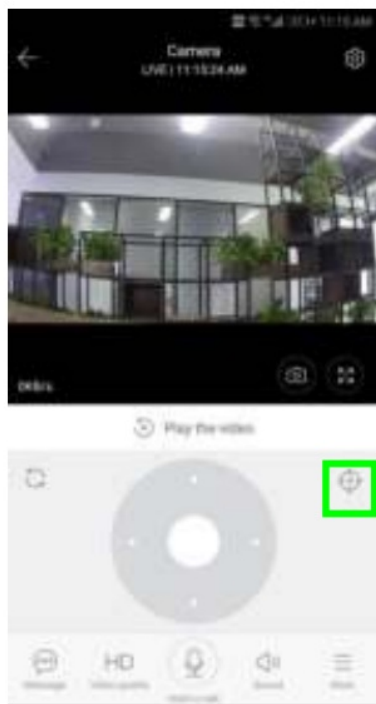
- PTZ

By sliding the steering wheel or sliding the screen on the live preview can control the camera's rotation.

- Preset

- 1 Click the preset icon to enter the preset management interface.
- 2 Add the preset: several presets can be added.
- 3 Delete the preset: click the edit icon to delete the preset that has been added.

Add the preset



Delete the preset



Video playback

Gentle hint: video playback by default is cloud recording, if you want to playback the video on the TF card, you can switch “play videos from” to “SD card”.

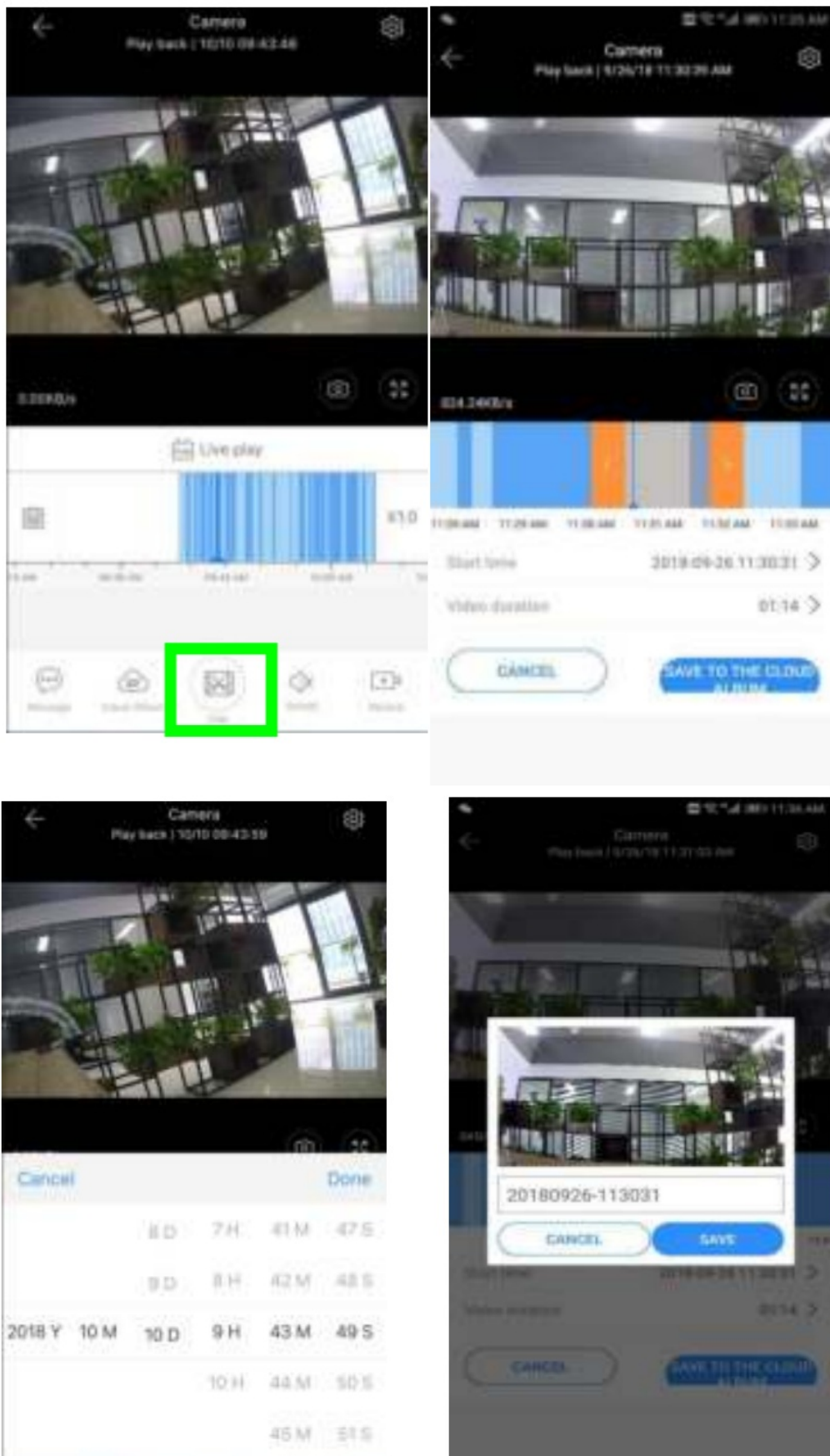
- Cloud video has color discrimination, dark blue indicates the alarm recording and light blue indicates non-alarm recording. TF card video color uniform light blue.
- Click the date icon to playback the video of the selected date.
- Click the “×1.0 ”icon can adjust the cloud video playback speed, but TF card playback does not support it.



Video clip

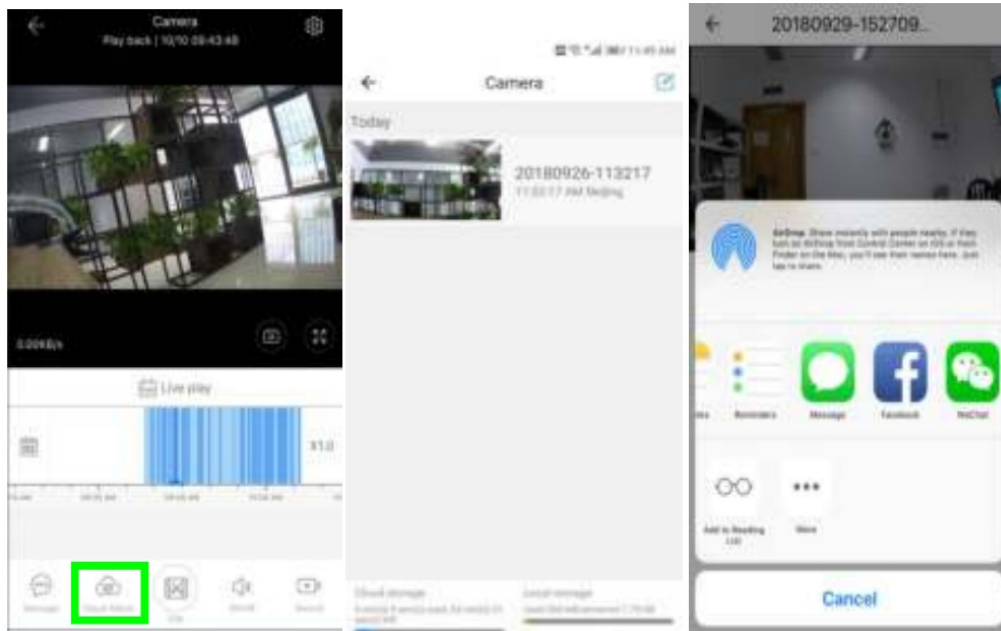
Gentle hint: Only the cameras with cloud service package have this feature.

Drag the playback cursor and click the clip icon, select start time and click “save to the cloud album”, enter the video name and click “save”.



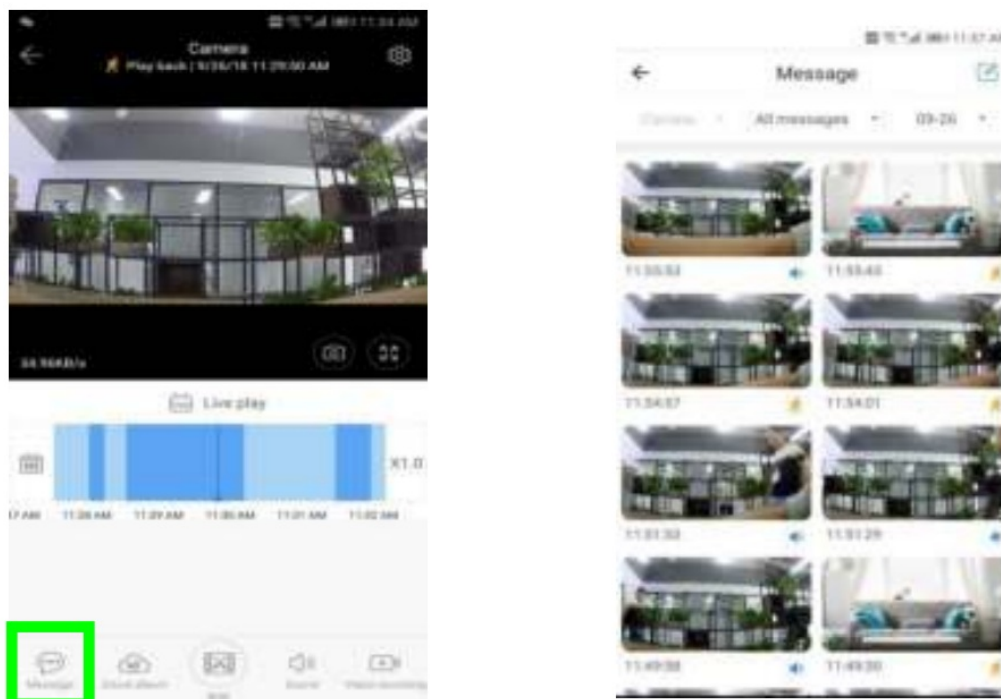
Download cloud video/share cloud video

Click the cloud album icon and click the video clip, click “Download” to save the video to your phone or click “Share” to share your Video on Facebook and YouTube.

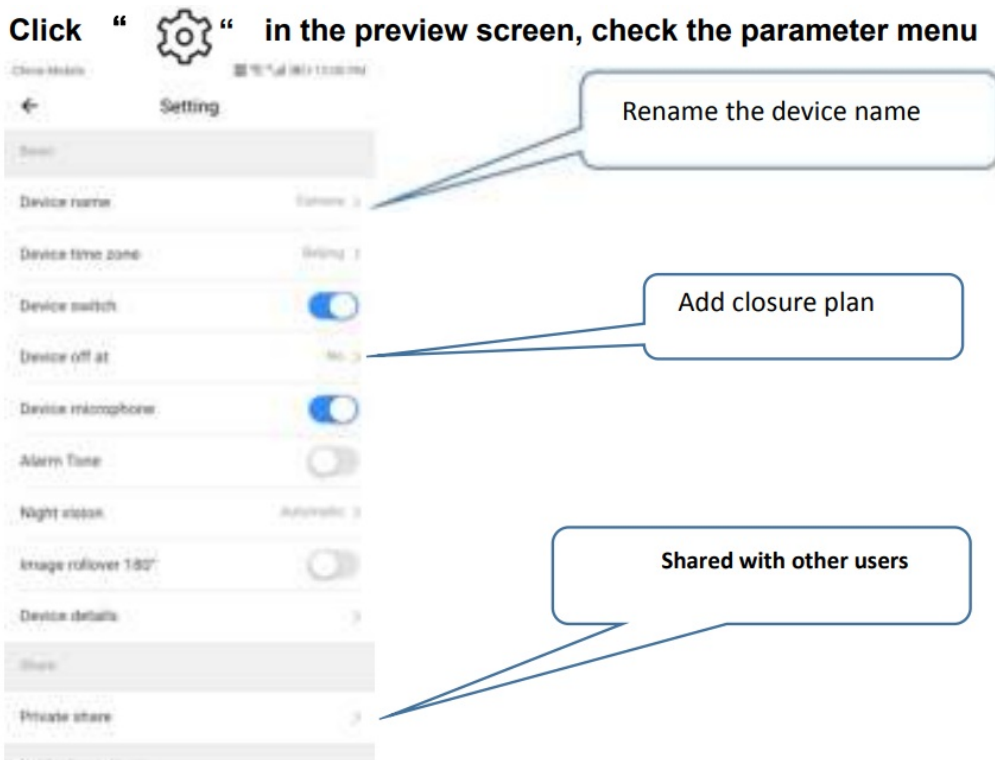


cloud video playback

Click “Message” to view the alarm video.



Preferences



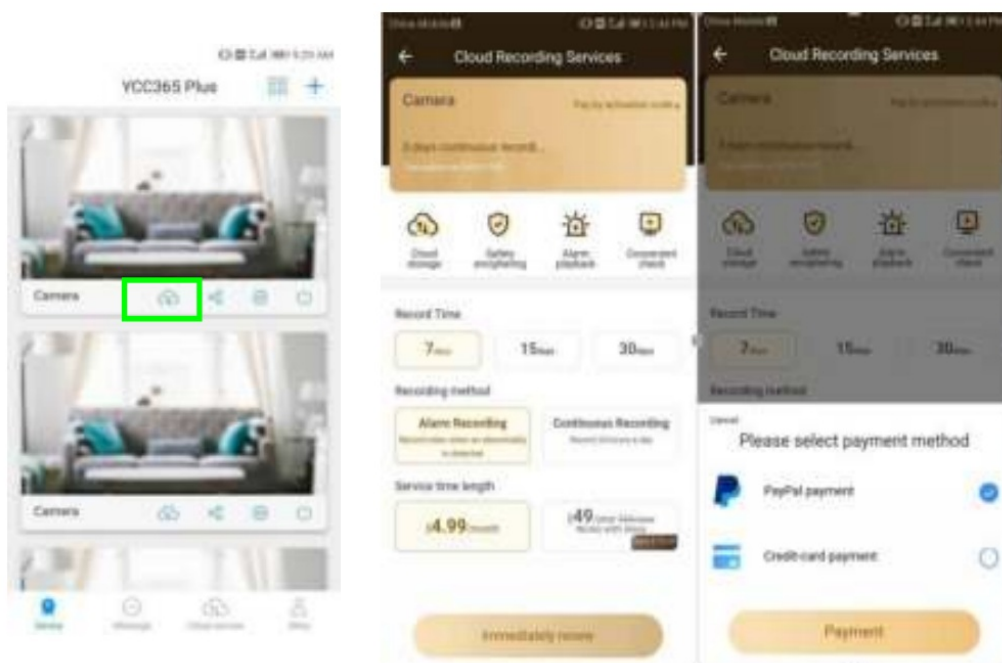
Cloud Storage service

We offer a 30-day-long cloud service, everyone can enjoy the cloud storage service for free, after that you can choose to pay for the service at a low cost.

A Select “Cloud service” and check Subscription packages

B There are three kinds of subscription packages for you, you can choose to pay for this service by monthly or yearly.

C We support the PayPal payment system, click “Go to PayPal now” and then finish the payment (please install PayPal app in advance)

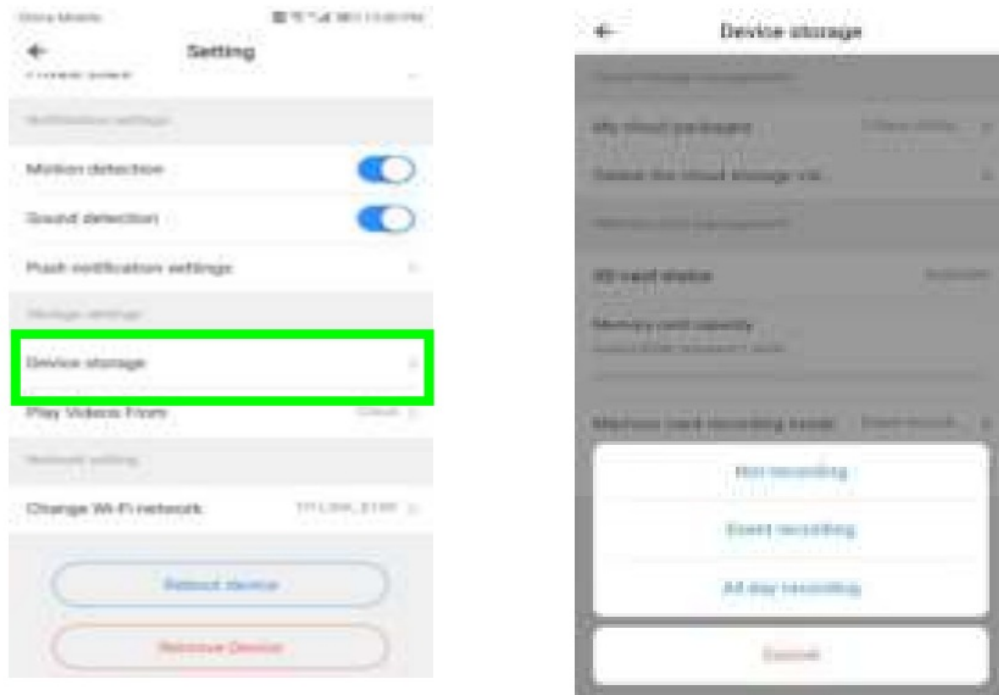


Set TF card recording Mode

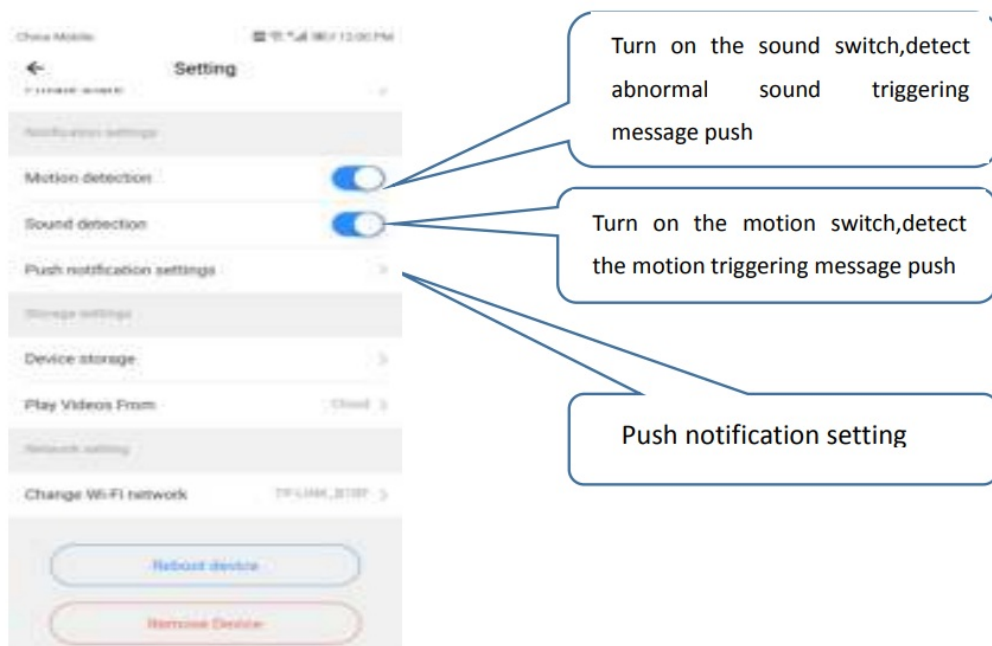
Insert the TF card into the card slot and power on the camera.

TF card requirements 1 Memory space 8-128G 2 C10 TF card 3 use after formatting.

4 Recommend Kingston/SanDisk/Samsung Click “Device storage” to check it Click “Memory card recording mode” to select the video mode of TF card.



Notification settings



Gentle hint **Only the cameras with cloud service package support mail delivery.**

Other functions settings

Device Microphone:
Open / Close the microphone Night Vision

1. Off, close the night vision
2. On, always open night vision

3. Auto, automatic switchover

Rotate The Video Feed 180°

Flip the picture when the camera is installed under the roof.

Wi-Fi Network:

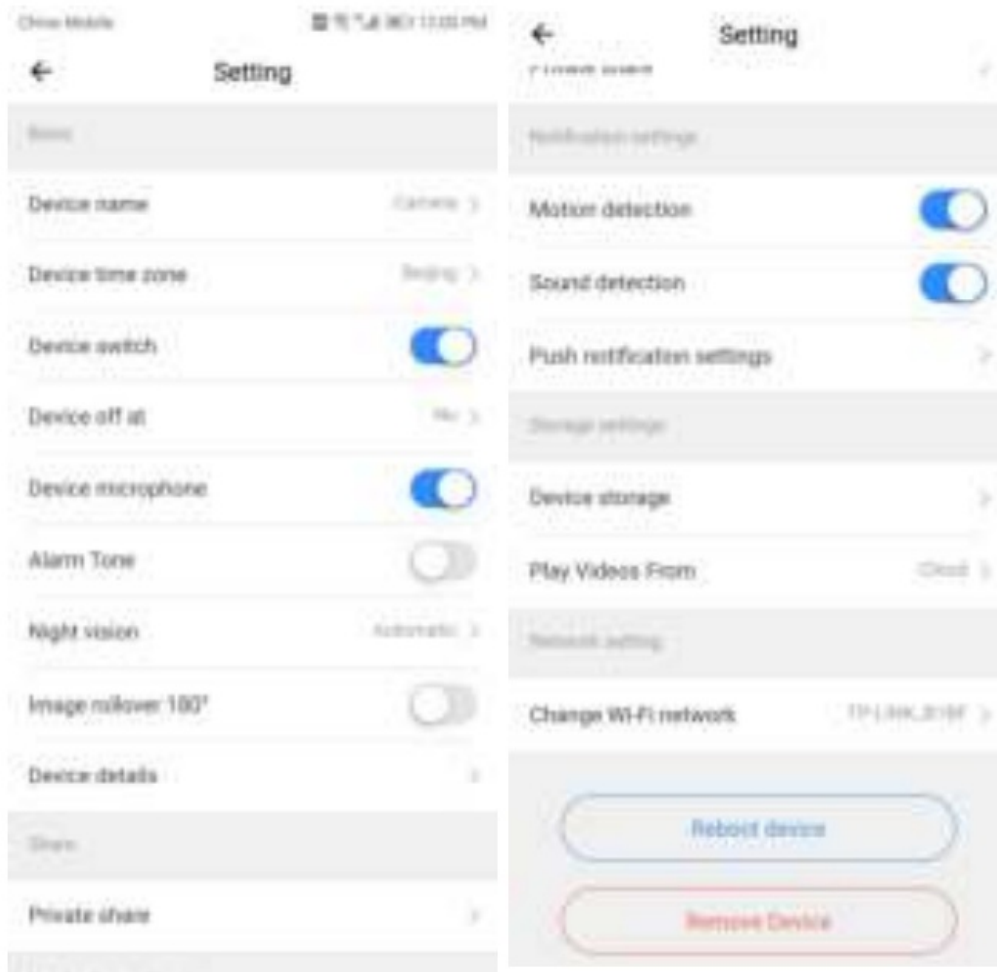
Change the Wi-Fi on the device.

Note:

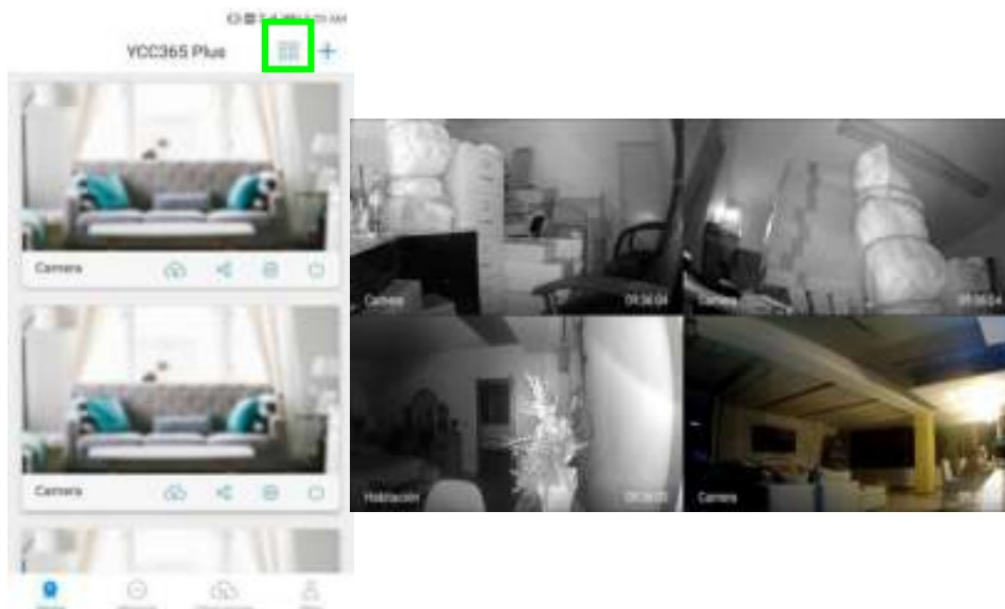
The Wi-Fi must be searchable, if the location changed and the Wi-Fi is different, please reset and connect to a new Wi-Fi again.

Device Details Check the ID and the number of the software\hardware of the device.

Remove Device Please remove the camera in your account if you need to use another account to add the camera.



Split-screen to watch Only for multiple equipments under the same account)



How to use a camera on a computer

Log [In:www.ucloudcam.com](http://www.ucloudcam.com)

Get more with Recording Services.

Cloud video recording
View the last 24h of video footage from your smartphone, tablet or computer.

Easy saving and sharing
Keep up to 1h of clips. Edit and share from your smartphone.

Log In

Email Address:

Password:

☐ Remember me

[Forgot Password](#)
[Sign Up](#)

Frequently asked questions

1. Can't add the device

A Please make sure the camera has been reset. Press the Reset button until hearing the prompt tone

B Only support 2.4GHZ Wi-Fi, if your Wi-Fi router is 5GHZ, please switch to 2.4/5GHZ dual mode.

C Please turn on the GPS service before adding the device to the Android mobile phone. After installation is complete, you will be asked to turn on GPS service when you use the app for the first time, if you choose not to turn on the GPS service, please uninstall and reinstall the app again

D Please confirm the camera wasn't binding by the other account.

There are four voice prompts in the progress

1 "Please configure camera by scanning code or AP hot spot"

2 Select your Wi-Fi and log in with your password, after the device, makes a noise like "beep" you will hear this "Please wait for Wi-Fi connecting".

3 "Please wait for internet connecting" after getting the Internet ip address.

4 "Internet-connected welcome to use cloud camera"

A If you can't go to the second step, please check your Wi-Fi channel is not hidden, and the Wi-Fi router can't be so far from the camera. If this way doesn't work, please scan the QR code to add the camera.

B If you can't go to the third step, please reduce the number of Wi-Fi users, and delete the special characters of your Wi-Fi password.

C If you can't go to the fourth step, please try again, if it still doesn't work, please contact the seller.

2. Why does it have an interval while the video is recording to the TF card

The size of the video file is limited. Once the video size is close to the critical value, the video file will be created and the next video will continue to be recorded, there is an interval but so short.

3. The TF card can't be identified

Please check the TF card if it meets the quality requirements, when the Wi-Fi signal is not good, it also can't be identified.

4. The video recording timeline is blank after the cloud service expired.

The video can't be replayed after cloud service expired, if there is no TF card in the camera, the video can't be recorded.

If the TF card is always working, but the video files disappeared, please check the Check TF card state, if it is normal in the App but no video has been recorded, please format the TF card. If it still doesn't work, please get a new TF card and try again.

5. Why I can't get the notifications on my phone

Make sure the App get the message pushing rights

Otherwise, when you are watching the real-time video in the App, there is no warning notifications, because it's unnecessary to send notifications when you are watching the video online.

Advanced message push system, the warning notifications won't be pushed to your phone all the time but it will record all the messages and videos.

6. Camera disconnect

Please check the power and the Internet then restart the camera. If this way doesn't work please remove the camera and add it again in the App.

7. Circle in the video, video runs slowly

Circle in the video means it's still loading, please check your network environment.

8. How do the other people watch the video?

Share the App account with other people.

9. How many people can use the account simultaneously?

There is no theoretical limit.

10. Why did adding a camera to another account would fail?

One camera one account, if the other account needs to add the camera, please remove the camera in the current device.

11. How can I get my camera connected to the other Wi-Fi?

Two ways:

A When you need to change to another Wi-Fi without moving the place.

Parameter setting >> Wi-Fi Network >> select the Wi-Fi

B: When the camera is moved to another place, please start the camera, you will see the


"Device disconnected" on the main page, and then click "TROUBLESHOOT" to connect to the Wi-Fi again.

After-sales instruction

1. The product will be updated in real-time, if there is an update, it will not be noticed anymore, please visit our official website for reference.
 2. Introductions of the basic function of the products are included in the instruction, please users to read all the information carefully.
 3. If any problems occur in the usage of the video camera, please contact the Seller
 4. We have made every effort to ensure the completeness and correctness of the contents of the instruction, but there may still be some deviations between part of the data and the actual situation, if you have any questions or disputes,
 5. Losses caused by operating without following the instruction of the manual book should be assumed by users.
- This instruction applies to consumer products.

Kindly remind: if the instruction is updated, it will not be noticed anymore, dual video recording memory (TF card/cloud storage) is supported by the video camera; to better safeguard safety of video recording, users could select multiple cloud video recording mode for video camera via service channels, choosing for monthly/yearly payment for storage.

Documents / Resources

	<p>amazon Cloud WiFi Camera [pdf] Instruction Manual amazon, WiFi Camera</p>
--	--

References

- ucloudcam.com