



## amazon B084DCJKSL Echo Show 8 Smart Display with Alexa User Manual

[Home](#) » [Amazon](#) » amazon B084DCJKSL Echo Show 8 Smart Display with Alexa User Manual

### Contents [ [hide](#) ]

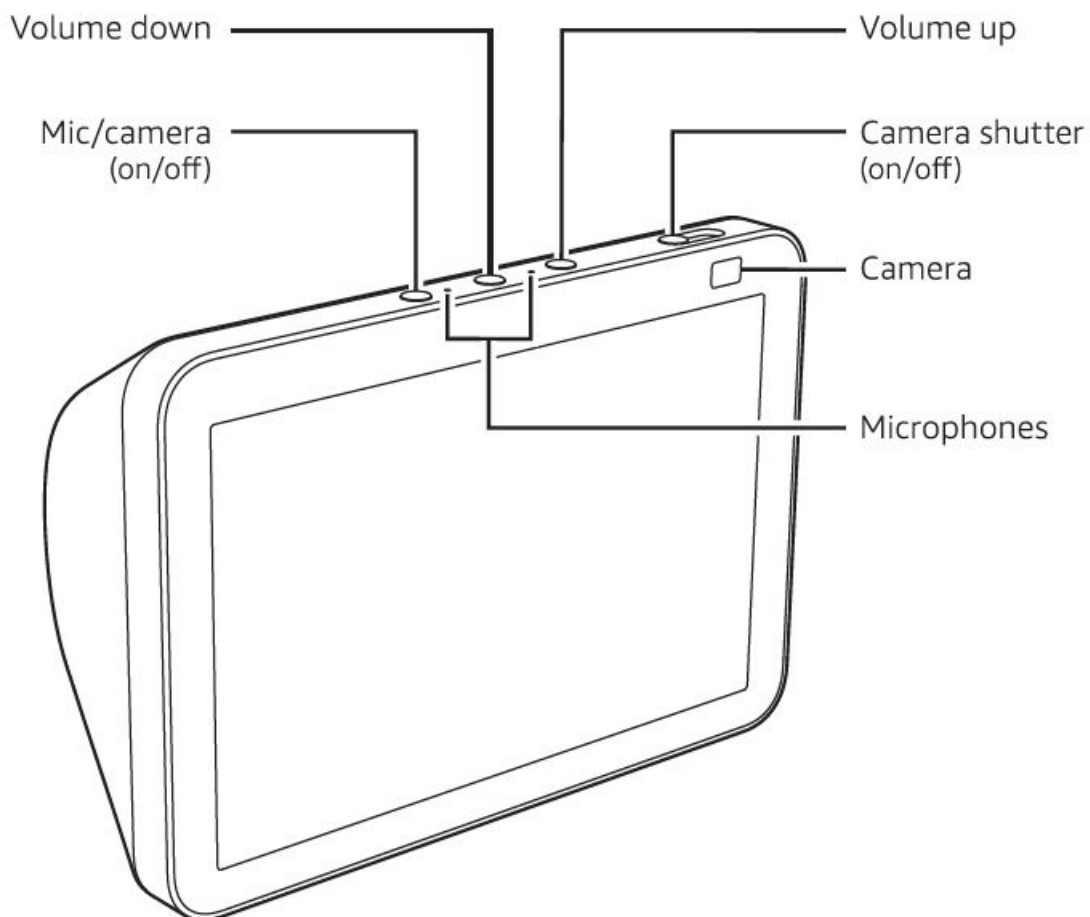
- [1 amazon B084DCJKSL Echo Show 8 Smart Display with Alexa](#)
- [2 Getting to know your Echo Show 8](#)
- [3 Alexa is designed to protect your privacy](#)
- [4 Things to try with your Echo Show 8](#)
- [5 Documents / Resources](#)
- [6 Related Posts](#)



amazon B084DCJKSL Echo Show 8 Smart Display with Alexa



## Getting to know your Echo Show 8



Also included: Power adapter

## Alexa is designed to protect your privacy



### Wake word and indicators

Alexa doesn't begin listening until your Echo device detects the wake word (for example, "Alexa."). A blue light lets you know when audio is being sent to Amazon's secure cloud.



### Microphone and camera controls

You can electronically disconnect the mics and camera with one press of a button. Slide the built-in shutter to cover the camera.



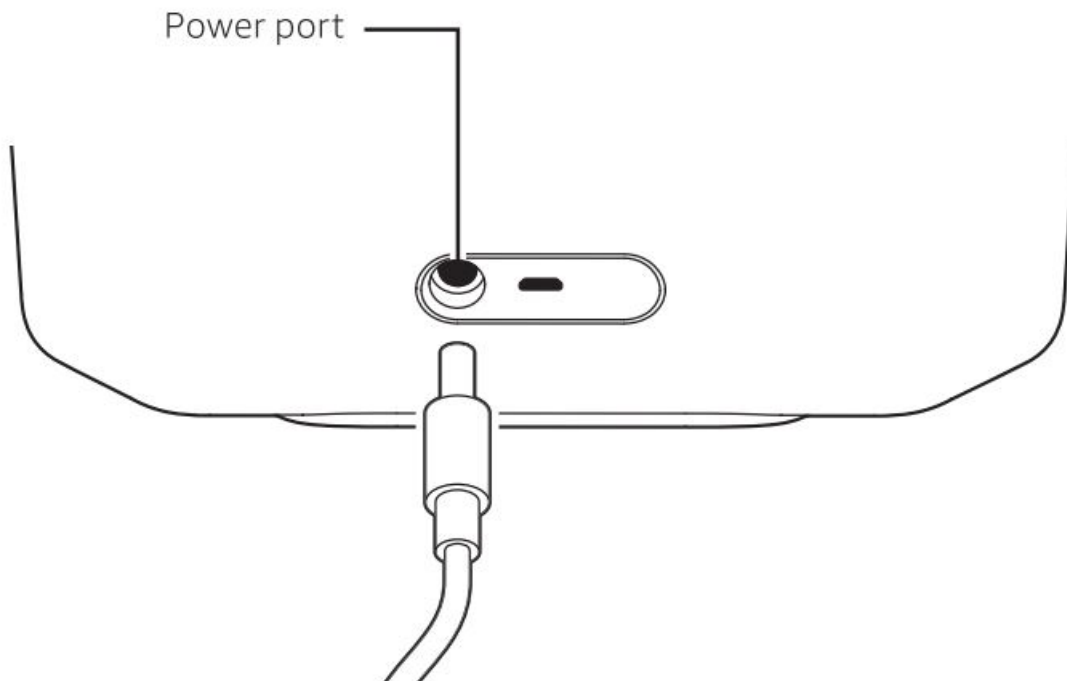
### Voice History

Want to know exactly what Alexa heard? You can view and delete your voice recordings in the Alexa app at any time.

These are just a few of the ways that you have transparency and control over your Alexa experience. Explore more at [amazon.com/alexaprivacy](https://amazon.com/alexaprivacy) or [amazon.ca/alexaprivacy](https://amazon.ca/alexaprivacy)

### Plug in your Echo Show 8

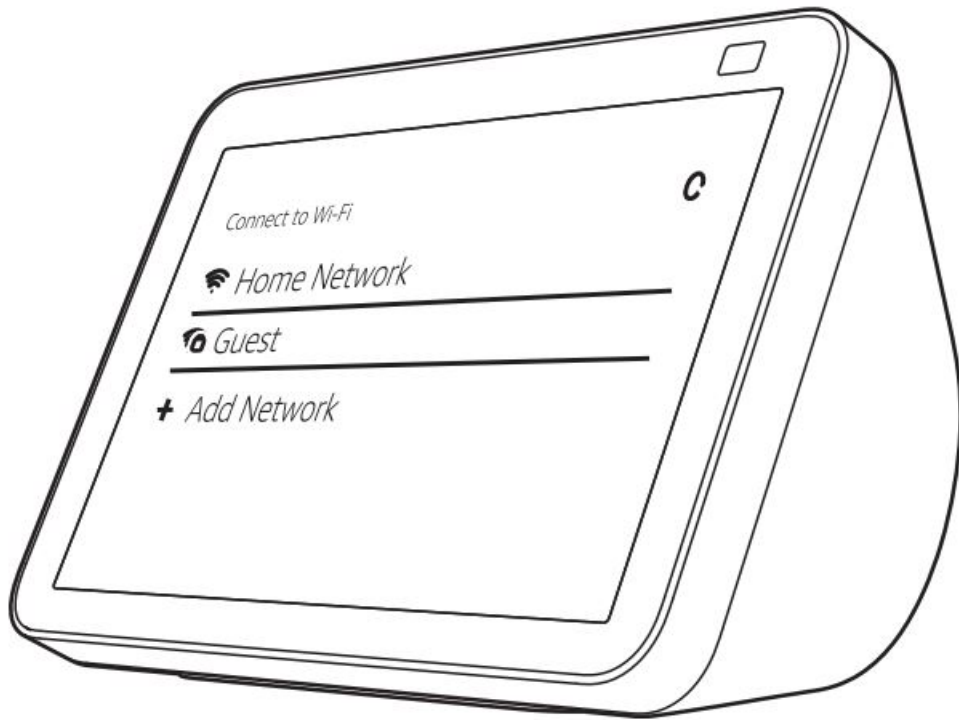
Plug your Echo Show 8 into an outlet using the included power adapter. In about a minute, the display will turn on and Alexa will greet you.



### Set up your Echo Show 8

Follow the on-screen instructions to set up your Echo Show 8. Before setting up your device, have your wifi network name and password ready.

During setup, you will connect to the internet so you can have access to Amazon services. Log in with an existing Amazon account username and password, or create a new account.



For help and troubleshooting, go to Help & Feedback in the Alexa app or visit [www.amazon.com/devicesupport](https://www.amazon.com/devicesupport)

### **Download the Amazon Alexa app**

Installing the app on your phone or tablet helps you get more out of your Echo Show 8. It's where you set up calling and messaging, and manage music, lists, settings, and news.

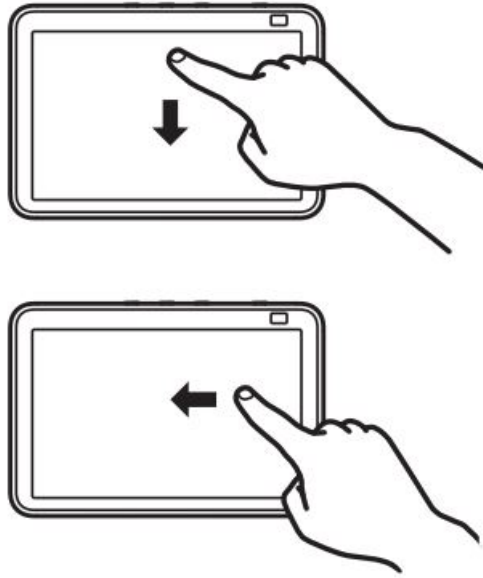


### **Explore your Echo Show 8**

To power your Echo Show 8 on and off, press and hold the mic/camera button.

### **To change your settings**

Swipe down from the top of the screen or say, "Alexa, show Settings:



### **To access your shortcuts**

Swipe left from the right side of the screen.

### **Give us your feedback**

Alexa is always getting smarter and adding new skills. To send us feedback about your experiences with Alexa, use the Alexa app, visit [amazon.com/devicesupport](https://amazon.com/devicesupport), or simply say, "Alexa, I have feedback:

## **Things to try with your Echo Show 8**

### **Watch TV shows, listen to music, see photos**

Alexa, show me TV shows.'

Alexa, show me my photos:

Alexa, play today's hits on Amazon Music.'

Alexa, play the news.

### **Stay organized and manage your home**

Alexa, add bananas to my shopping list.

Alexa, set a homework timer for 1 hour.

Alexa, show me my calendar.'

Alexa, show me chocolate chip cookie recipes.

### **Voice control your smart home**

Alexa, show me the front door.' Alexa, dim the lights.'

### **Stay connected**

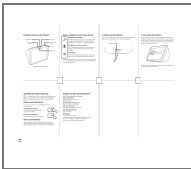
Alexa, call Mom.

Alexa, announce "dinner is ready."

some features may require customization in the Alexa app, a separate subscription, or an additional compatible smart home device.

You can find more examples and tips in the Alexa app.

## **Documents / Resources**



[amazon B084DCJKSL Echo Show 8 Smart Display with Alexa](#) [pdf] User Manual  
B084DCJKSL, Echo Show 8 Smart Display with Alexa