



Amazon Smart Sticky Note Printer User Guide

[Home](#) » [Amazon](#) » Amazon Smart Sticky Note Printer User Guide 

Contents

- [1 Amazon Smart Sticky Note Printer](#)
- [2 DOWNLOAD](#)
- [3 Related Posts](#)

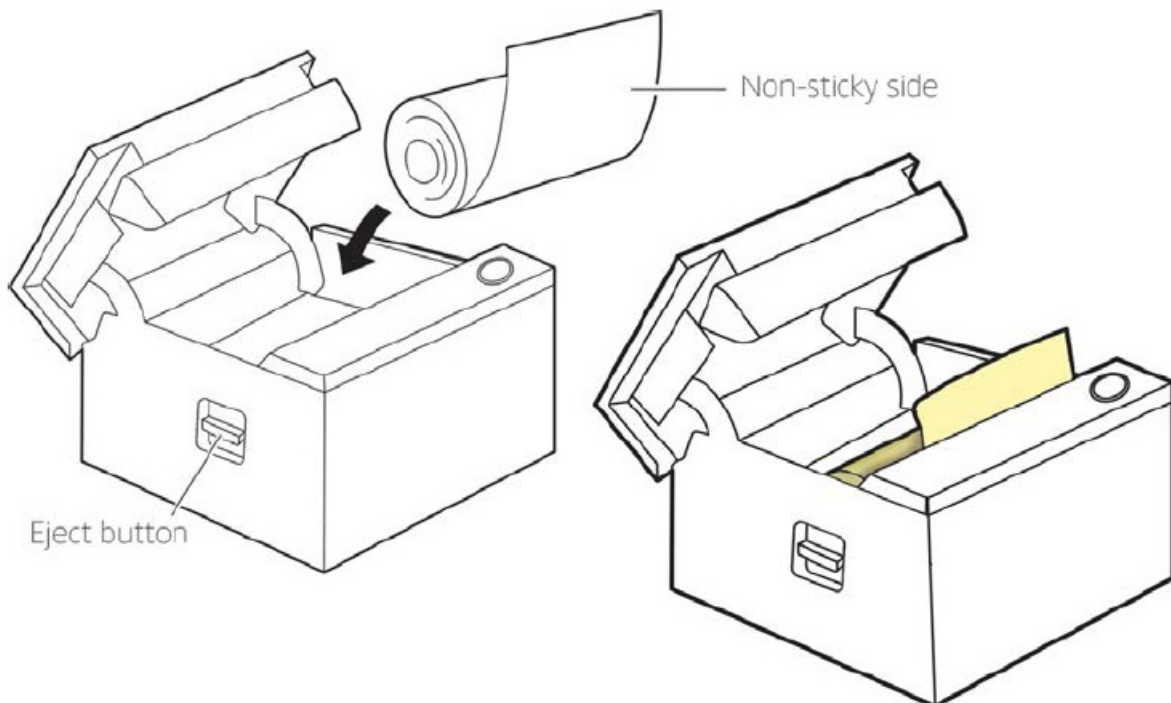
Amazon Smart Sticky Note Printer



QUICK START GUIDE

Let's get started

If you purchased your Smart Sticky Note Printer as a gift, you can forward this guide to your gift recipient to help them with set up!



1. Install the paper roll

Peel the safety sticker off the printer and press the eject button to open the printer door. Load the paper roll as shown above, paying attention to the orientation of the roll. Make sure that the end of the paper roll is sticking out of the slot on your printer before you close it.

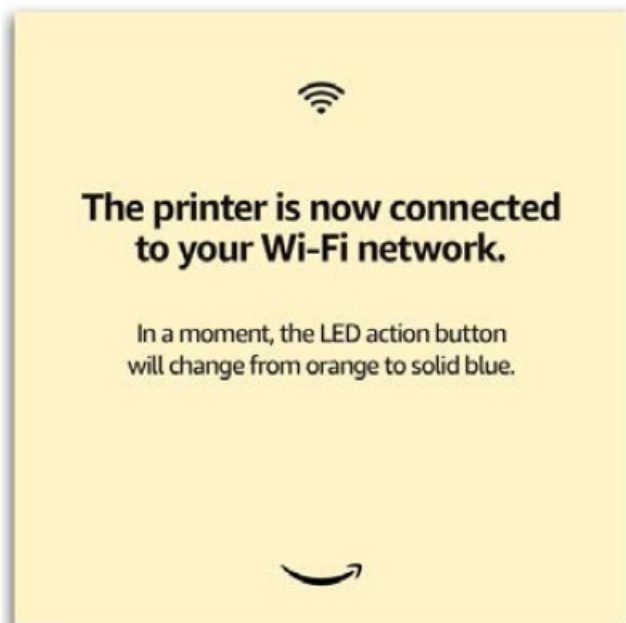
2. Plug in and connect your printer

Place your printer within 30 feet of a compatible Echo device and plug the printer into a power outlet using the included adapter.

Your printer will try to connect to your home wifi network using your stored credentials. It may take a few minutes to connect to your home wifi.



When you plug in your printer, it should print the above message



If the printer successfully connects to your home wifi, it should print the above message.

3. Pair your printer with your Echo

Almost Finished!

Once the printer's LED action button has turned **solid blue**, say:

"Alexa, discover my printer."

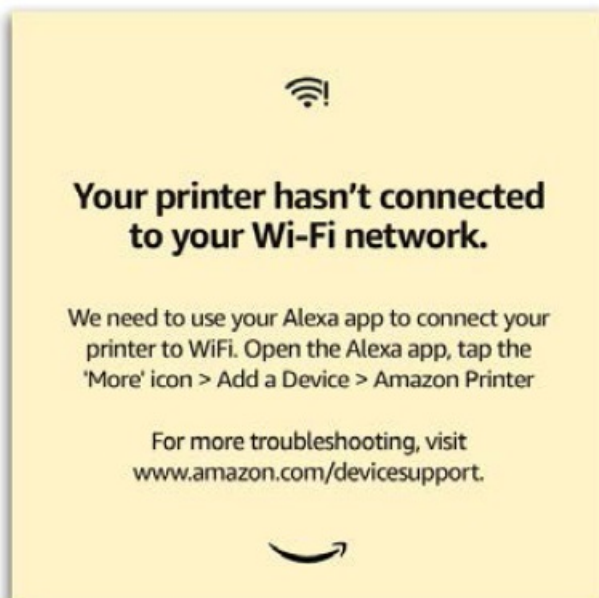
Confirm your printer is paired by saying, ***'Alexa, print a test page'.***

i A compatible Echo Device is required to pair your printer. You cannot pair the printer using the Alexa app alone.

Once your printer's LED action button turns solid blue, finish set-up by saying "Alexa, discover my printer." You're now ready to make your first print! You can check your printer is paired by saying "Alexa, print a test page."

If your printer cannot connect to your home wifi network automatically

If your printer cannot connect to your home wifi, it will print the message shown below. Please note: You will need to use the Alexa app on an Android phone / iPhone 7 (or later)* for setup.

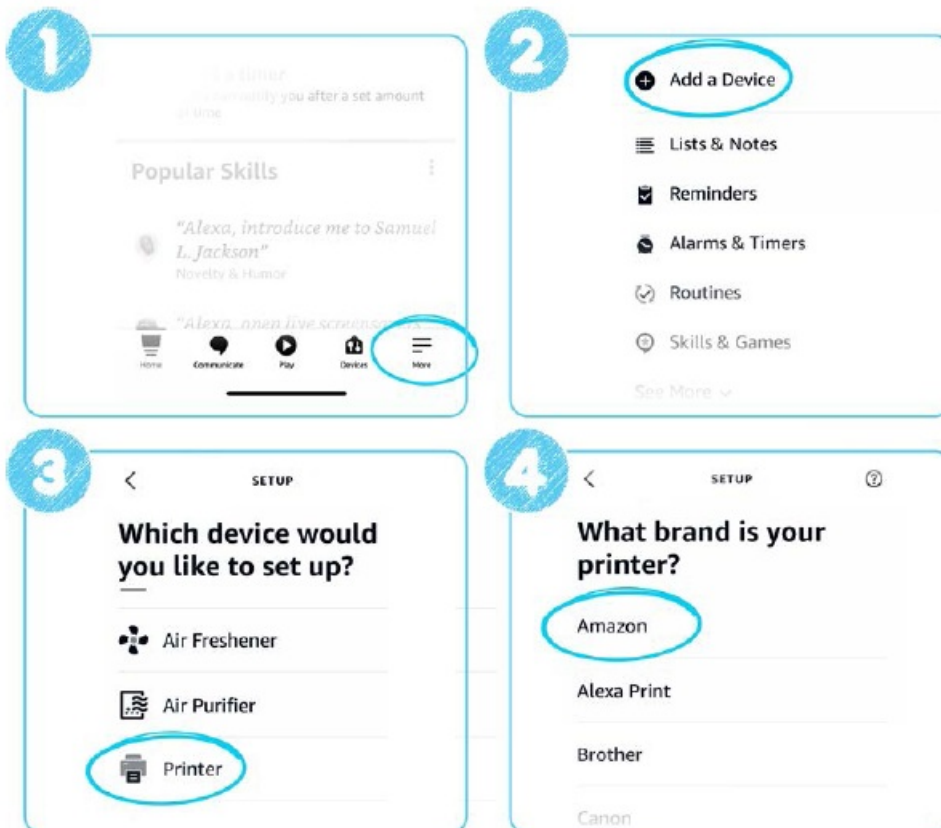


Add your printer using the Alexa app

Make sure that you have the latest version of the Alexa app on your phone. In the app, tap the 'More' icon, then Add a Device>Printer.

Choose 'Amazon' on the next screen. You can now follow the on-screen directions to connect your printer to your home wifi.

*Setting up your printer using an Apple iPhone 6s or earlier is not possible



5. Pair your printer with Alexa



Your printer will now print the message above. Once your printer's LED action button turns blue, finish set-up by saying "Alexa, discover my printer." You're now ready to make your first print! You can check your printer is paired by saying "Alexa, print a test page."

Troubleshooting:

All my prints are blank

The paper roll may be installed incorrectly. Remove and re-insert it, paying particular attention to the orientation of the paper. Make sure that the sticky side faces up (see diagram at top of page).

My Prints are spotty, streaky or faded

If your printouts have vertical stripes, are spotty or faded, clean the printer heads. Click [here](#) to see a video showing how to do it.

1. Unplug your printer and allow it to cool down.
2. Open the printer and remove the paper roll.
3. Locate the printer heads and gently wipe them with a clean, dry cloth.
4. Replace the paper roll and close the printer.
5. Plug in your printer.

Alexa didn't discover my printer

Ensure the LED action button on your printer is solid blue and try to discover the printer again by saying "Alexa, discover my printer".

You can also try discovery via the Alexa App (Devices> Add> Printer> Other> Discover Devices). To pair your printer, you **MUST** have a compatible Echo device.*

Be sure your Echo device is:

Powered 'On'

On the same Wi-Fi network (SSID) as the printer

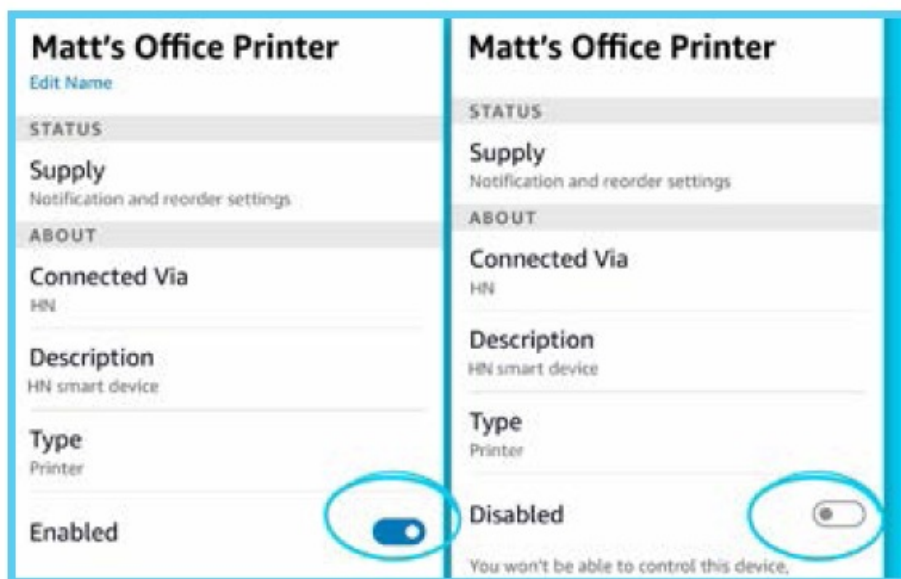
Registered to the same Amazon account as the printer

*Your printer is compatible with all Echo devices EXCEPT: Echo (1st Gen), Echo Dot (1st Gen), Echo Plus (1st Gen), Echo Dot Kids Edition, Echo Spot, or Amazon Tap.

You cannot pair the printer using the Alexa app alone.

I have more than one printer – how do I control which one Alexa uses?

Some print types (such as voice notes) are automatically routed to your Smart Sticky Note Printer. You can direct all prints to the printer of your choice by disabling the other printer(s) using the Alexa App.



DOWNLOAD

Amazon Smart Sticky Note Printer User Guide – [[Download PDF](#)]

Manuals+