



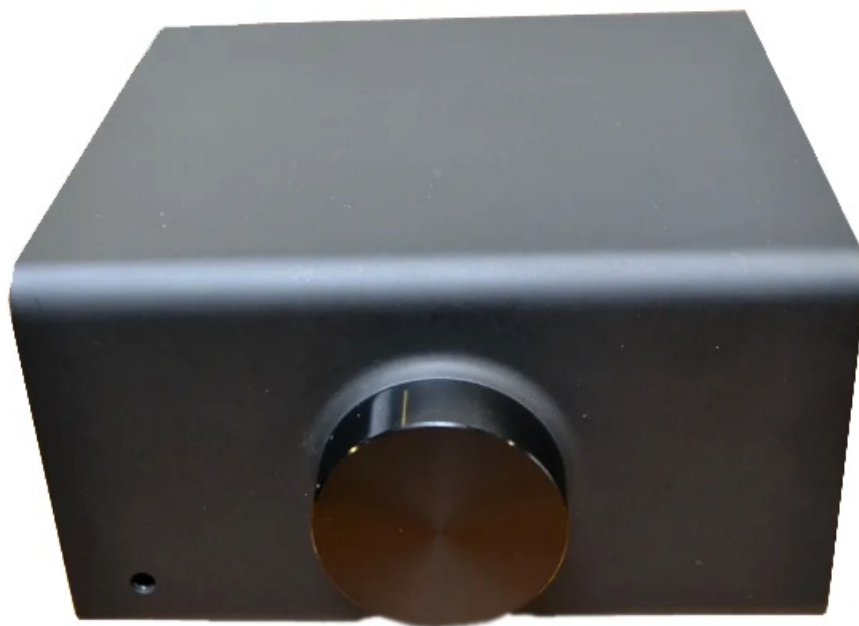
Amazon Echo Link User Guide

[Home](#) » [Amazon](#) » Amazon Echo Link User Guide 

Contents

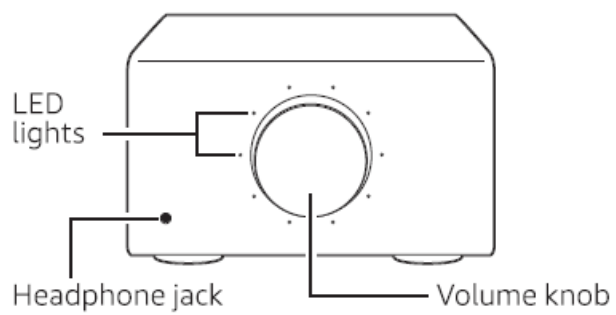
- [1 Amazon Echo Link](#)
- [2 Getting to know your Echo Link](#)
- [3 Optional: Connect another audio component](#)
- [4 Give us your feedback](#)
- [5 DOWNLOAD](#)
- [6 References](#)
- [7 Related Posts](#)

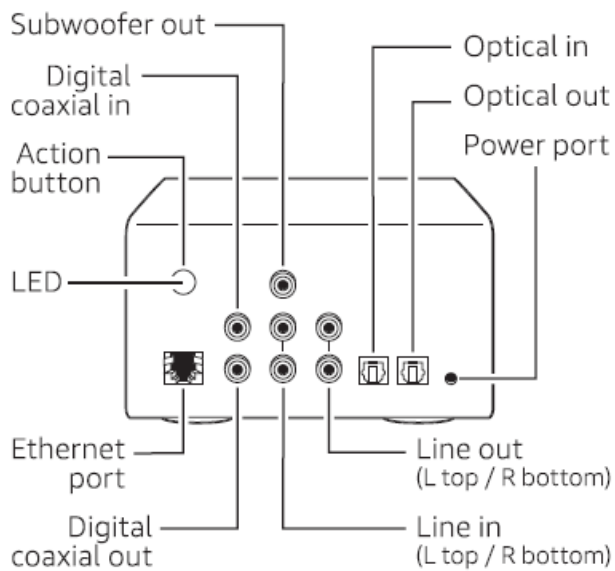
Amazon Echo Link



QUICK START GUIDE

Getting to know your Echo Link

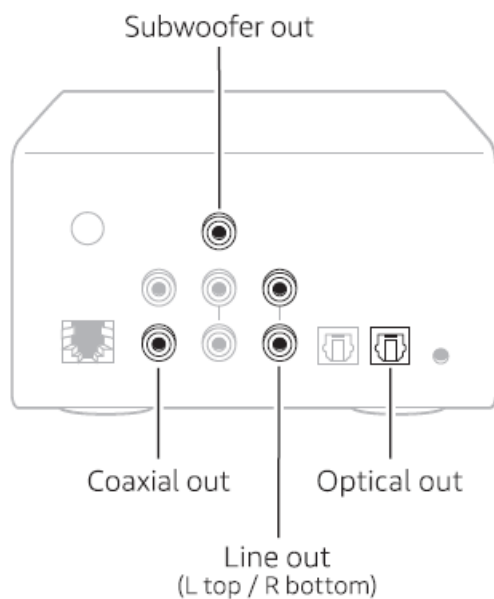




Also included: Power adapter

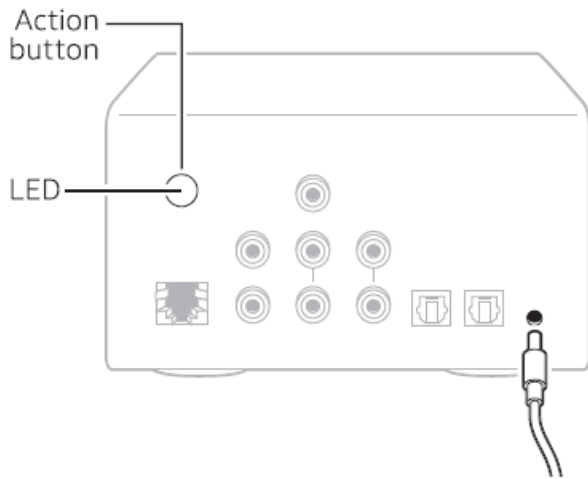
1. Connect your Echo Link

To connect a stereo receiver, amplifier, powered speakers and/or a subwoofer, use the digital (coaxial/optical) or analog (RCA+subwoofer) outputs. If connecting a receiver or amplifier, make sure the correct input is selected. If connecting powered speakers or a subwoofer, make sure they are powered on and the volume is up.



2. Plug in your Echo Link

Plug the power adapter into your Echo Link and then into a power outlet. The LED on the Action button will light up, letting you know that your Echo Link is ready for setup in the Alexa App.

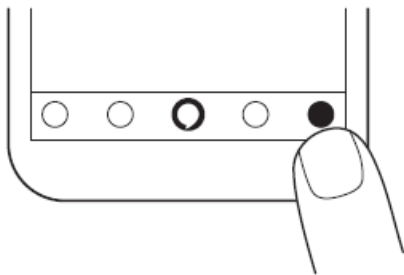


You must use the power adapter included in your original Echo Link package for optimal performance.

3. Download the Alexa App

Download the latest version of the Alexa App from the app store.

After you open the Alexa App, if you are not prompted to set up your device, tap the Devices icon in the lower right of the Alexa App to get started.



To learn more about Echo Link, go to Help & Feedback in the Alexa App.

If you plan to use an Ethernet connection for your Echo Link, please complete setup using Wi-Fi, then plug in an Ethernet cable to establish an Ethernet connection.

Optional: Connect another audio component

To connect another audio component, such as a CD player, MP3 player, or amplified turntable, use the inputs on the back of your Echo Link. Use the input format (RCA/coaxial/ optical) that matches the output on your audio component. Echo Link supports audio input from only one component at a time.

Give us your feedback

Alexa will improve over time, with new features and ways to get things done. We want to hear about your experiences. Use the Alexa App to send us feedback or visit www.amazon.com/devicesupport.

References

- [User Manual](#)

[Manuals+](#), [Privacy Policy](#)

This website is an independent publication and is neither affiliated with nor endorsed by any of the trademark owners. The "Bluetooth®" word mark and logos are registered trademarks owned by Bluetooth SIG, Inc. The "Wi-Fi®" word mark and logos are registered trademarks owned by the Wi-Fi Alliance. Any use of these marks on this website does not imply any affiliation with or endorsement.