




## amazon basics X88-2 Dashcam Front and Cabin User Manual

[Home](#) » [amazon basics](#) » amazon basics X88-2 Dashcam Front and Cabin User Manual 



DASHCAM FRONT&CABIN  
User Manual

### Contents

- [1 X88-2 Dashcam Front and Cabin](#)
- [2 Important Notice](#)
- [3 Camera Overview](#)
- [4 Screen Icons](#)
- [5 Basic Operation](#)
- [6 Installationa](#)
- [7 FAQ](#)
- [8 After-Sales Service](#)
- [9 Documents / Resources](#)
  - [9.1 References](#)

### X88-2 Dashcam Front and Cabin

X88



Enjoy Your Smart Driving

**Dear Customer,**

We are truly grateful for you choosing YANSOO! We hope you will enjoy the quality of our products and services. If you need assistance, or have any suggestions to improve it, please feel free to contact us. You can reach us via AMAZON Platform.

Our support team will respond you within 12 hours.

You are an incredibly important customer, and serving you has been an honor.

We may not be the best, but we will always do our best to provide you the best service!

Kind Regards, YANSOO TEAM



Yansoo service

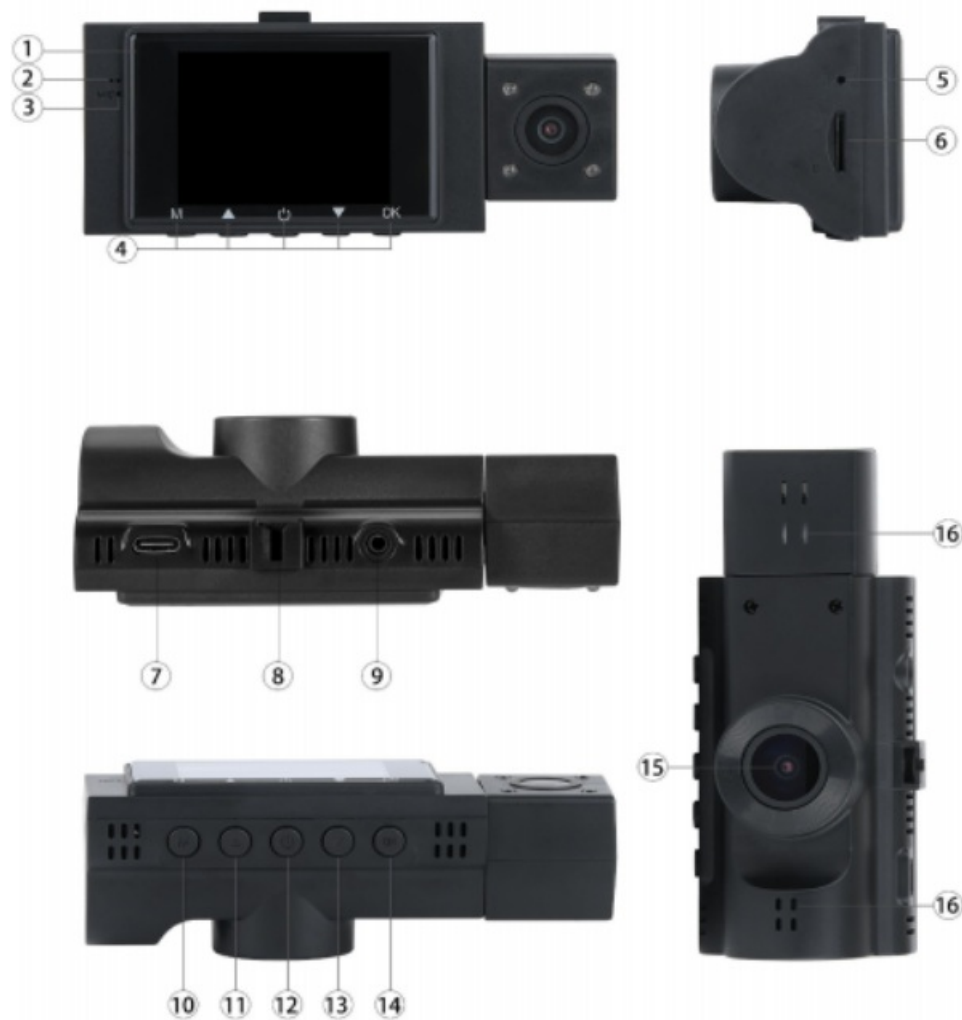
Response in just 12 hours, Contact us before returning the item. We will help you resolve any issues asap.

**Important Notice**

- The short type C cable in package is for transferring video to your computer, which can not been used as power cord, please use the car charge cable to power this camera.
- Before installing the camera, please power up the car recorder to test whether it can be used properly, including whether the display of the front and inside cameras is normal. (Please use the car charger to get power from the cigarette lighter)
- The inside view is gray because the night vision function is turned on. You can just open the menu, find the "Shooting Sound" function, turn it off, or quickly turn it off by Long pressing the ▲Button, and the inside view will return to normal color.
- The camera cannot be operated while recording, so press the OK Button to pause recording before making function settings.
- The camera records video at high resolution, Be sure to use high speed Micro SD card, Class 10 or above, No mo- re than 32GB. (16GB / 32GB cards are recommend-ed). Kindly format the card in the camera menu before use.
- The car camera has a built-in battery as an internal power source for emergency recording. If you want to keep the camera turned on for 24 hours, you need to power it continuously, just connect it to the Hardwire Kit. (need to purchase separately)
- Do not install the camera where it may obstruct the driver's view (including the rearview mirror) or the deployment of the airbag. Be sure the camera lens is clean and there is noting blocking the lens.

- Do not leave the camera in direct sunlight for a long period of time or where the temperature could go above 158°F (70°C).
- We suggest some important function settings for your daily using: G-Sensor level choose "low", or turn off; loop recording choose "3 minutes"; motion detection choose "off"; parking monitor choose "ON", security camera for car.
- We suggest you format the SD card monthly to extend its life span.
- For some other frequently asked questions, please refer to the "Frequently Asked Questions" section. If these still don't solve your problem, please email us at AMAZON and all setup issues can be easily resolved and should be able to get you up and running in no time.
- Please be assured that we will take 100% responsibility for our products. We just want our customers to be happy and proud to use Yansoo Dash Cam!

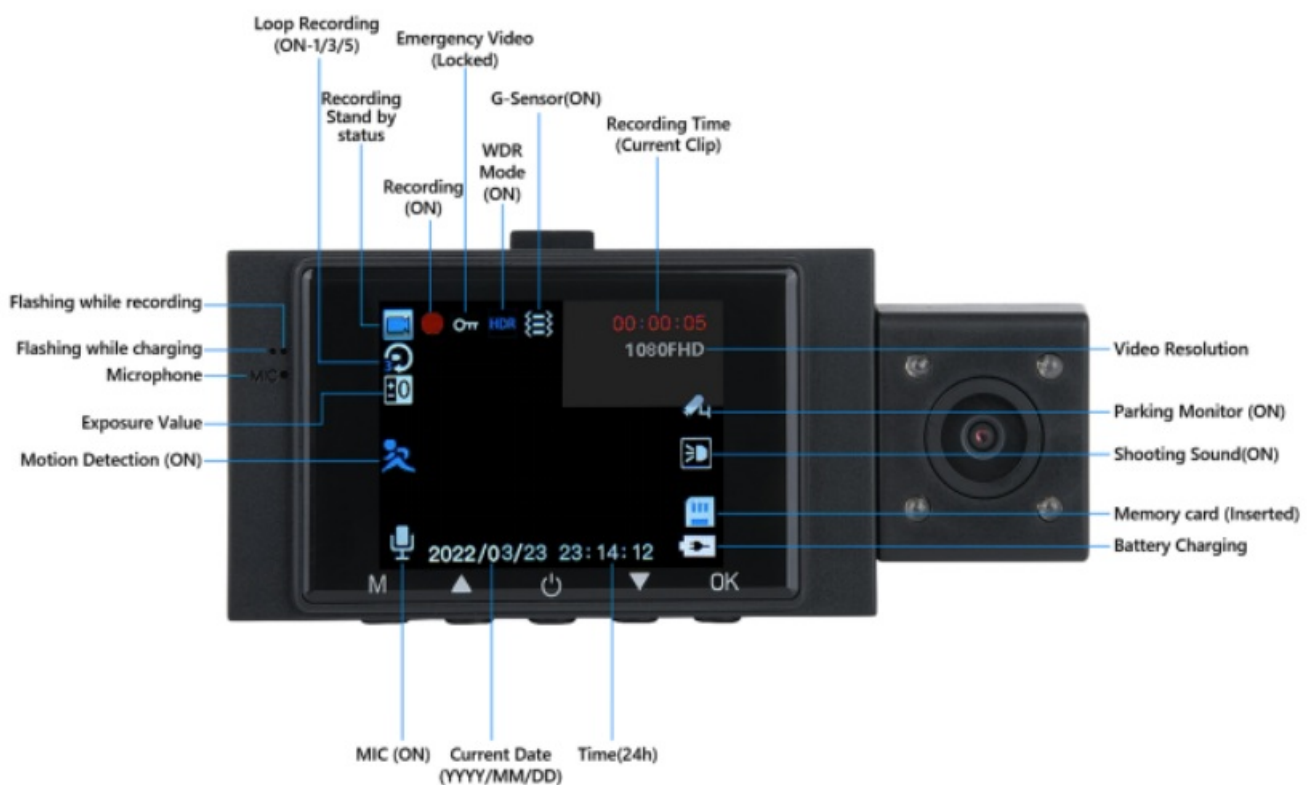
## Camera Overview



1. Flashing while charging
2. Flashing while recording
3. Microphone
4. Button Guide Icons
5. Reset
6. Micro SD Card Slot (SD Card need to purchase separately)
7. Type C Charging Port

8. Mount Connector
9. Rear Camera Port
10. Menu Button / Mode Button
11. Up Navigation Button / Quickly Turn Off the Night Vision Function Button / Screen Toggle Button / Switching between front and inside files Button
12. Power Button [/ Screensaver Button
13. Down Navigation Button / Switching microphone Button / Switching between front and rear files Button
14. OK (Confirm) Button / Record Button
15. Lens
16. Speaker

## Screen Icons



## Basic Operation

### Device Power

The device will be automatically powered on when it's plugged into a 12V accessory socket or cigarette lighter and receives power (i.e.: when the vehicle is started).

- To turn the device on manually, press and hold the POWER Button until the screen lights up.
- To quickly turn on the Screensaver when the Dashcam is on, use a short press on the POWER Button once. The display screen will go out (however the dashcam will still be running at this time). Use a short press on the power button again and the display screen will go back on.

### Menu Settings

When the dashcam is on it will be automatically recording. You can press the OK Button to stop the recording.

– The X88 operates in 3 modes:

Video Recording Mode, Photo Mode and Playback Mode.

These modes also have menus to help you configure recording and taking photos. Long Press the MENU Button to access the mode you want. You can distinguish the different modes by the icons in the upper left corner.

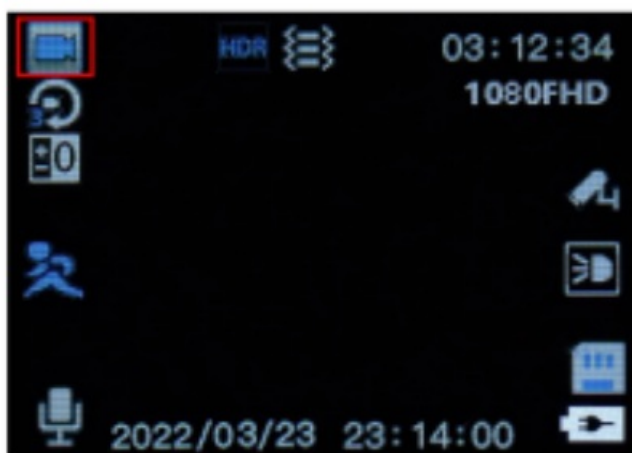
-In all 3 operating mode, you can short press the MENU once to access the menu settings for that particular mode, and short press twice to display System Setting Menu.

Press the ▲ and ▼ Buttons to scroll through the various setup functions and press OK Button to select. Press Menu Button again to exit/return.

## Video Recording Mode

The camera will automatically enter Video Recording Mode and start recording when connected to a car charger and power on. A blue LED lights and red dot flashing on the top left corner indicates recording is in progress. Press the OK Button to stop recording for the standby mode, or start recording again.

(Standby mode means that there is no ongoing operations)



**'Video Recording Mode'**



**'Video Recording Menu'**

In Video Recording Mode press the "MENU" Button to enter the setting menu of video recording mode.

- Resolution: 1080FHD (1920\*1080)/ 720P (1280\*720)/ VGA
- Loop Recording: This function allows you to set video file length to 1/3/5 minutes, select a value to activate loop recording, so when storage fills up, it will automatically loop back to the earliest file and record over it.

(Please note:

Locked video files cannot be overwritten, you need to clear these locked files by manually deleting or formatting them)

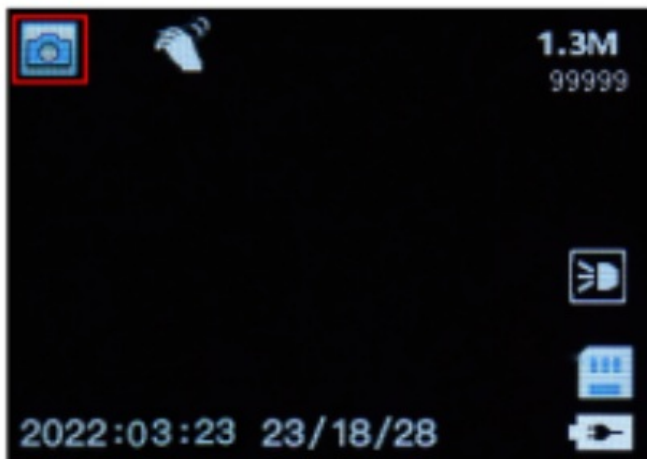
- WDR(Wide Dynamic Range): After turning on this function, the camera will automatically fine-tune the exposure to maximize the clarity of the video when encountering low light or backlight conditions.
- Exposure: Adjustable exposure value, used to change the image brightness. (£3.0)
- Microphone: Turn on/off audio recording in the video. You can achieve it in two ways, manually turn it on/off through the menu or short press the down button to quickly turn it on/off.
- Date Stamp: Enable/Disable the date and time marks in video files. (Recommended to turn on)
- “Motion Detection”: This function can automatically start recording in standby mode when a moving object is detected in front of the camera.
- “G-Sensor (Gravity Sensor)”: G-sensor will detect significant or sudden shock and movement then automatically locks current recording from loop recording, Off/Low/Medium/High sensitivity available.
- “Parking Monitor”: It is used to protect your car after parking, with this function on, after you park the car and the camera powers off, it will stay in standby mode, when the camera detects shocking, it will automatically turn on and shoot 31 seconds of video, then then shut down automatically. The G- sensor sensitivity can be adjusted to low/medium/high.

(It is recommended to turn off the motion detection and parking monitor functions during driving, otherwise it will automatically lock multiple files causing the memory to be full)

- Shooting Sound: off/on the night vision function, or quickly turn it off/on by Long pressing the ▲ Button. if it is on, the interior view will show a gray picture, if it is off, it will show a normal color. When night vision is activated, it can have a clearer view on low light conditions. With the help of this night vision function, drivers will get higher foresight during night or low light driving, and it can provide drivers with more comprehensive and accurate information for potential hazards.

### Photo Taking Mode

To take a photo, stop video recording and hold down the MENU Button toggle to the Photo Taking Mode. Press the OK Button to take a photo.



**‘Photo Taking Mode’**



**‘Photo Taking Menu’**

In Photo Taking Mode press the “MENU” Button to enter the setting menu of photo mode.



- Resolution: Set the photo resolution. (Optional: 10M 3648\*2736 / 8M 3264\*2448 [ 5M 2592\*1944 / 3M 2048\*1536 / 2M 1920\*1080 / 1.3M 1280\*960 / VAG)
- Anti-shaking: Off / On
- Date Stamp: Enable/Disable the date and time marks on photo.

## Playback Mode

Playback of videos can be done on the device or a computer.

To review a photo / video on the device, stop video recording and hold on MENU button toggle to the Playback Mode.

Use the ▲ and ▼ Buttons to toggle to the desired video.

Press the OK Button to play.

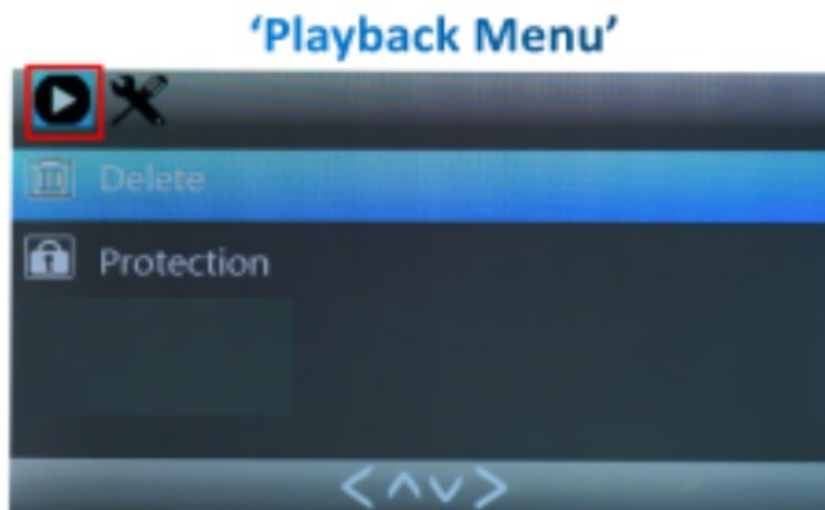
In Playback Mode, Long press the A Button to switch between front and inside files, During playback use the OK (pause), & (rewind) and ¥ (fast forward) Buttons to control the video playback.



**'Playback Mode'**

In Playback Mode press the "MENU" Button to enter the setting menu of playback mode.

- Delete: Delete Current / Delete All
- Protection: Lock One / Unlock One / Lock All / Unlock All



To delete a photo / video, stop video recording and toggle to the Playback Mode and toggle through the videos and photos to the one you want to delete.

To playback a photo / video on the computer either use an SD card adapter or connect the device to the computer directly using the Type-C cable.

– To playback a video using an SD card adapter, remove the memory card and insert it into an SD card adapter. Place the adapter in the computer.



On the computer, navigate to device drive. "DCIM/1" is front camera videos, "DCIM/2" is inside cam videos. Select the video to Playback.




Select Mass Storage

– To playback a video using Type-C cable, connect the Cable to the device and the computer. After the device powers up, press the OK Button to select "MassStorage".





## System Setting Menu

Press Mfiflice to access System Setting Menu in any mode. The  icon is highlighted in the upper left corner.



- Screen Saver: In order to guarantee safe driving, not to be effected by the light of recorder, you can set the screen saver to shut off the display, press any key to turn it back on.  
Set the time to automatically turn off the LCD display after no operation. (Optional: Off / 30 Seconds / 1 Minute / 2 Minutes / Quickly turn on the screen saver by tapping the power button)
- Auto Power Off: Set the time for the camera to automatic- ally power to save energy, after the camera is idle for set time, it will power off. (Optional: Off / 1 Minute / 3 Minutes /5 Minutes)
- Frequency: 50Hz / 60Hz
- Key Sound: Off / On
- Switch Sound: Off / On
- Language: Japanese / English / German / French / Spanish / Italian/ Chinese
- Date/Time: Change the time and date by using the ▼ and ▼ then press OK to confirm.
- Format: Format the Micro SD Card.
- Default Setting: Reset all settings back to factory default.

## Installationa

### Step 1: Insert the Memory Card



Before installation, please check the camera's normal function, and make sure you are using a high speed Micro SD card (speed Class 10 or above.), and format the card in the camera menu before recording. Gently push the memory card in until you hear a click, and allow the spring release to push the card in/out.



Clean the front windshield before installation. Tear off the plastic protective film from the suction cup, press the suction cup to the suitable position on the inner windshield, and rotate the suction cup handle to ensure that the suction cup is fixed. Do not install the camera in a place where it may obstruct the driver's view.

### **Step 3: Connect the power**

Connect the car charger to the camera and the cigarette lighter, hide the rest of the cable in the gap of the Interior trim board. The camera will auto-start recording once powered on.



Step 4: Start the engine and have a test run.

Please feel free to contact us if you have any questions during the installation process.

## FAQ

Q1: Why can not found the inside camera file?

Q2: Camera turns ON / OFF frequently automatically?

Q3: Camera Freezing/Lagging or Crashing?

Use a pin or an unfolded paper clip, press the RESET Button (Located at the side) to restart the camera. Now the dashcam should turn ON. If it still doesn't turn ON, then please CONTACT US.

Q4: I put an SD card in the dashcam and it only wants to record for a few hours then says SD card is full, why?

1. If the loop recording function is not turned on. Please turn on the loop recording function. Loop recording means the recorded video will be saved in sections for 1/3/5 minutes of your choice. When the SD card memory runs out, the previous video files will be overwritten except for the locked files. 2. If the loop recording

function has been turned on. It may be that the locked files exceed the capacity memory of SD card, you can save the needed videos to your computer and then format the SD card. Also, it is recommended that you turn off the parking monitoring and motion detection functions and turn down the sensitivity of the G-sensor function when you are driving on the road, so that there will not be many useless videos being locked and taking up the memory of the SD card. (If you choose too high a sensitivity setting, then even slight fluctuations will trigger the locking of video files)

Q5: The car camera could not turn on?

There are 3 reasons that can cause this problem: 1) The dashcam needs continuous power supply, just check if the power connection is normal. 2) The dashcam needs to be reset, just connect the power, click the reset button with a pin and start the camera. 3) A defective card can cause the camera not to turn on, just remove the card or get a new card and insert it into the camera.

Q6: Suction cups do not attach well to the windshield?

Please clean the windshield with a glass cleaning wipe, then remove the protective film from the suction cups, then soak them in warm water for a few moments. Finally, press the suction cups to the right position on the inner windshield and rotate the suction cup handle to make sure the suction cups are fixed. If it still does not work, please contact us for replacement.

There are two reasons that can cause this problem: 1) The card is a low speed or bad quality card, just replace it with a high speed good quality card (speed over class 10, no more than 32GB), format your new SD card when you use it for the first time. 2) Insert the card when the camera is on, the camera can not recognize the card, just turn off the camera and insert the card, then turn on the camera.

Q9: Color screen or lines on the screen?

1. please check that you are using the proper memory card, SD card incompatibility can cause this. (We recommend using a class 10 high-speed micro card with no more than 32GB) 2. remove the SD card, reset the camera without inserting the SD card, and check if there are still lines on the screen.

Q10: The camera does not turn ON? (When you first use)

Please make sure you charge camera for 3 hours before first use. Make sure memory card is inserted properly. Then plug in power cable which should turn on the camera and it should start recording.

Q11: Oldest video files are missing?

Q12: Is Video fuzzy?

Please make sure the lens of the camera is clean and there is no dirt or grease on the windshield also, try to adjust the angle to avoid blocks or glare or wind-shield reflecting. If the lens is out of focus, we are extremely sorry in advance. This can be a manufacturing defect. Please send us an email with a screenshot or a sample

video so we can get this resolved for you ASAP.

Q13: The camera gets HOT?

It is normal for your camera to run slightly hot. Due to it is recording video at high speed, the dash cam maybe hot during using. (no more than 158°F/70°C)

Q14: Unable to access MENU?

Please make sure you stop recording video first by pressing OK Button. Then Press MENU button to enter specific mode menus.

Q15: Why is my inside view gray?

## After-Sales Service

### Warranty

- All our products are covered by ONE-YEAR warranty.

### Customer Support

- [For questions, support, or warranty claims, contact us at AMAZON. We will reply you within 12 hours.
- If you can provide the photos or video to show your problem, we will be appreciated.
- **IMPORTANT:** Proof of original purchase (Online order receipt is also accepted) is required for any warranty service.



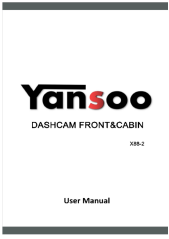
Yansoo is firmly committed to continually improving our products, services and customer experience. As our VIP customer, if you have any thoughts on how we can do better, we would appreciate your constructive feedback and suggestions. Please contact us.



Thank you for choosing Yansoo!

---

## Documents / Resources

	<p><a href="#">amazon basics X88-2 Dashcam Front and Cabin</a> [pdf] User Manual</p> <p>X88-2 Dashcam Front and Cabin, X88-2, Dashcam Front and Cabin, Front and Cabin, Cabin</p>
---	---

## References

- [User Manual](#)