



amazon basics H3 Space Heater for Indoor Use Instruction Manual

[Home](#) » [amazon basics](#) » amazon basics H3 Space Heater for Indoor Use Instruction Manual 

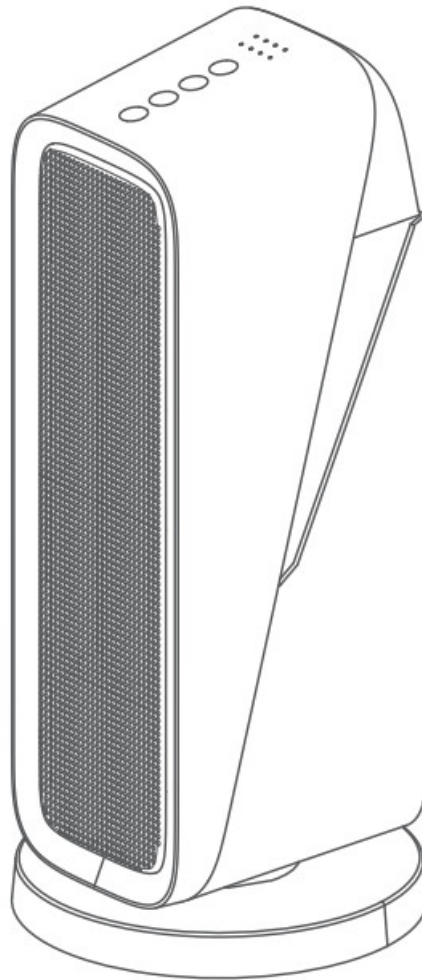


Fan Heater INSTRUCTION MANUAL

Contents

- [1 H3 Space Heater for Indoor Use](#)
- [2 POINTS FOR ATTENTION](#)
- [3 Product overview](#)
- [4 Specifications](#)
- [5 Function](#)
- [6 Using Instruction](#)
- [7 Maintenance](#)
- [8 FAQ](#)
- [9 Documents / Resources](#)
 - [9.1 References](#)

H3 Space Heater for Indoor Use



Model: H3

Thank you very much for using our products.
Please read the user manual carefully before use, and keep it for future reference.

TECHNICAL REQUIREMENTS

1. Color box&paper card: material and size should be according to document requirements, the size of the finished product deviation within 2-3mm requirements;
2. **Carton:** material and size should be according to document requirements, the size of the finished product deviation within plus 5-10mm requirements;
3. PE foam: the bonding place of PE foam should be smooth, the glue should be even, the size of the finished product deviation within 2-3mm requirements;
4. Manual, warranty card, label, album and other printing materials must meet the inspection requirements of the quality department;

* Details of all packaging materials can be compared with: Inspection guide for incoming materials of packaging cartons – document No.: YWT-ZY-PZ-26

① The printed contents, patterns and fonts shall meet the requirements of drawings or sealed samples, and the patterns shall be clear, full, no decolorization and obvious overflow edge; and the position shall be accurate, horizontal deflection is not allowed to exceed 5mm, pattern shall be consistent color, good ink adhesion, and not decolorizing with fingers;

② Packing materials must have protective measures and are not allowed to damage their outer surface due to packaging and transportation.

POINTS FOR ATTENTION

Before using, please read this user manual carefully and keep it for future reference.

Warning

1. To avoid electric shock and fire, do not allow water, liquid or any flammable detergent to get into or to clean the product.
2. Do not spray insecticide, perfume or other flammable spray around the products.

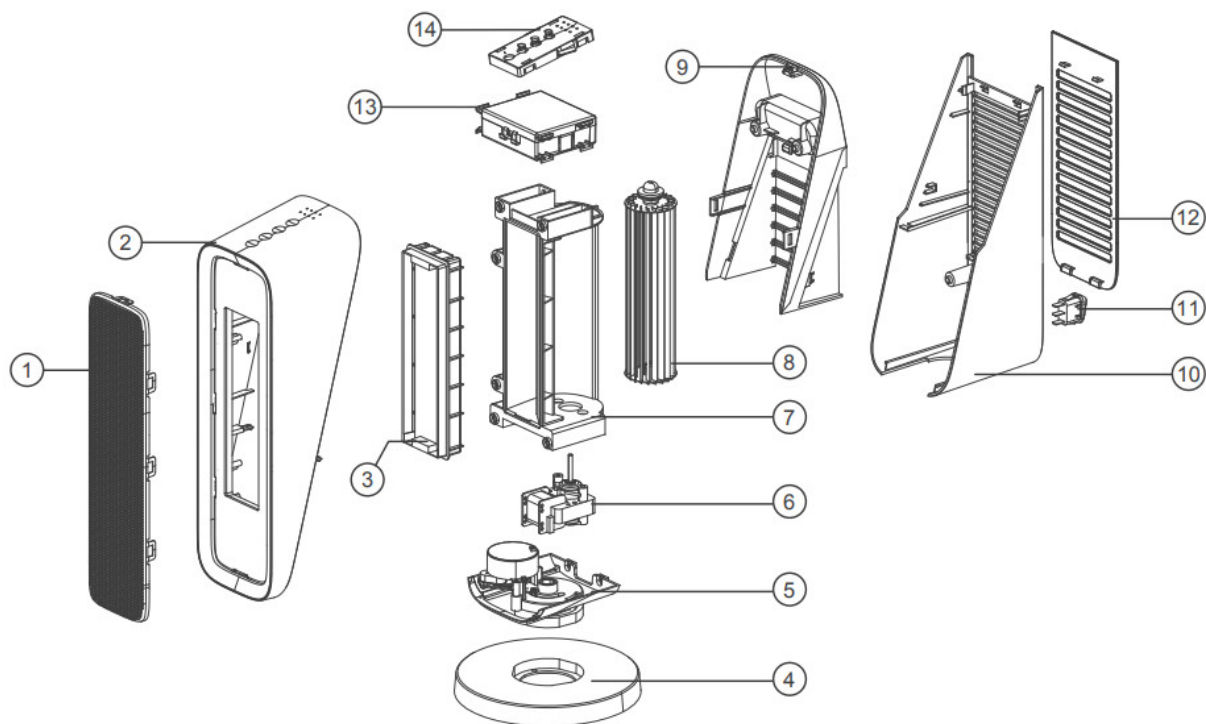
Notice

1. Before connecting the power supply, please check whether the voltage of the product is consistent with the local power supply voltage.
2. Please check the power cord before using, if damaged, it must be replaced by professional staffs to avoid danger.
3. Ensure the unit is used in a stable and horizontal level to avoid injury or fire caused by product dumping.
4. Do not spray the product with water to avoid dangers such as short circuit and electric shock.
5. Do not use the unit in high temperature, damp or other volatile place like acid, alkali or oil.
6. Do not use the unit around the bathtub, sprinkler or swimming pool.
7. Do not place the unit near the inflammable and explosive materials and use it in places with severe dust to avoid accident.
8. Do not put the unit under the air conditioner to prevent condensed water dripping into it.
9. Do not insert finger or other things into the air outlet/inlet when the unit is working to prevent physical damage or trouble.
10. Do not use the unit near the inflammable items and the suitable temperature should be below 30 degrees. Leaving at least 1 meter of space on the back and side of the unit to prevent fire.
11. Do not touch the vent grill and be sure it is installed in place before using the unit. The vent grill is used to prevent touching the heating element directly.
12. Do not touch the vent grill or cover the air outlet when using to avoid burning.
13. Ensure the unit is unplugged before cleaning or maintaining.
14. Do not pull the power cord to move the unit. Ensure the unit is unplugged if you need to move it.
15. People with physical or mental disability or without relevant experiences and skills (including children) should use it under guiding and instructing.
16. Children should be supervised to ensure they do not play with the unit.

Product overview

The unit is designed with back power button and on/off button in the front, which is easy to operate and suitable in small area, like house, office and so on. Also the unit has anti-tilt function with wide-angle heating function and the body could be adjustable from 0 to 80 degrees.

Components



1 Iron net
2 Front shell
3 Heating module
4 Base module
5 Rotating module
6 Motor
7 Air duct

8 Wind wheel
9 Handle cover
10 Top cover
11 Rocker switch
12 Filter
13 Power module
14 Control panel module

Control panel



1H 2H 4H 8H



Power



Natural wind



Timer



Warm wind



Swing



Hot wind



Child lock

Specifications

Model	H3
Dimensions	180x180x400mm
Weight	2.5kg
Rated voltage	AC220-240V 50Hz
Power	1500W

Function

Power on:

After the unit is powered on and press Rocker Switch on the back, all the LEDs will be on for about 1s, then enter the standby state.

Power Button

When the unit is turned on for the first time, all LED lights will be on for about 1s then enter the standby state.

Switch/Mode Button

1. In the standby state, press the Switch/Mode button once, the unit will be turned on and enter the natural wind working mode (with natural wind indicator lights on). Press this button again, the unit will switch to warm wind mode (with warm wind indicator lights on). Press this button thirdly, the unit will switch to hot wind mode (with hot wind indicator lights on). After the fourth press, the unit will back to natural wind mode (circulation). The buzzer will ring once when press the button.
2. In the power-on state, long press this button 3s, the unit will be standby state.

Timer Button

When turned on, press the timer button once for timing 1H, then 2H, then 4H, then 8H (with the corresponding indicator lights on), and then cancel timer(No light is on).

Wide Angle Warming

This product could provide warm air from side to side in a wide-angle, as follows:

Swing Button

When turned on, press the button to make the the device auto swing left and right. Press again to stop swinging. The buzzer will ring once when press the swing button.

Child Lock Button

When turned on, long press the child lock button 3s to enter to the child lock state with the buzzer ring once (the other button can't work). Long press the button for 3s to cancel the child lock with the buzzer ring once.

Notice: The child lock will be cancel automatically when unplugged.

Anti-pitch Protection

When the unit is overturned, the power will be cut off and the heating components, fans and head shaking will be turned off.

The unit will beep for 1 minute and then enter the standby state.

Overheat Protection

After turning on the warm wind or hot wind mode, long press the power button to shut down, the heating component will be shut down first. The fan will be turned off after one minute. All the light in the panel will blink for one minute and enter the standby state.

Auto-shut off

When the unit runs continuously for 24 hours, it will shuts down automatically and enter to the standby state.

Using Instruction

Warning

- Do not cover the vent grill with anything to avoid fire.
- Do not block the air inlet and air outlet, keep a distance of at least 30cm on the back and side of the unit.
- Do not close to the air outlet for a long time to avoid scalding when the unit is working.
- Clean the filter regularly to ensure enough air volume and avoid overheating protection.
- Ensure the power cord is in good condition;
- Ensure the back power button is turned off.
- Before connecting the power supply, please check whether the voltage of the product is consistent with the local power supply voltage.

Maintenance

Notice:

1. Unplug the unit and cool it down before maintenance or cleaning.
2. Do not immerse the unit into any liquid.
3. Do not use abrasive, corrosive or flammable cleansers (such as bleach or alcohol) to clean any part of the unit.
4. After cleaning the product, place it in a ventilated place to dry and avoid to dry it under sunshine directly.

Notice:

- Turn off the unit, unplug and cool it down.
- Use a soft cloth with neutral cleanser to clean away any dust or debris from the surface of the unit and air inlet/outlet.

Notice: Please don't drop any water into the machine when clean the air outlet.

Storage:

1. Turn off the unit, unplug , cool it down and arrange and bind the power cord. Please use a soft cloth with neutral cleanser to clean away any dust or debris from the shell of the unit.
2. When the unit is completely dried out, put on the dust cover bag and place it in a cool and well ventilated place.

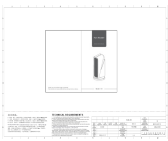
If the unit is not used for a long time, it should be operated for several minutes from time to time to a good performance of the unit.

FAQ

SITUATION	REASON
No working	<ul style="list-style-type: none"> ● Is the plug into the power socket? Is there a power outage? ● Is the home leakage switch or fuse cut off? ● Is the power button turning on? ● Is any angle of body over 60 degrees?
Stop suddenly during heating	<ul style="list-style-type: none"> ● Is the socket contact not bright and the plug knocked off? ● Is the air inlet /outlet are blocked or not enough air volume, causing the temperature inside the unit exceed the thermostat protection. ● Is there insufficient supply of electrical circuits in your home?

amazonbasics

Documents / Resources

	amazon basics H3 Space Heater for Indoor Use [pdf] Instruction Manual H3 Space Heater for Indoor Use, H3, Space Heater for Indoor Use, Heater for Indoor Use, Indoor Use, Use
--	--

References

- [User Manual](#)