



amazon basics G74 6-Button Ergonomic 2.4GHz Wireless Mouse with Mechanical Fast Scrolling User Guide

[Home](#) » [amazon basics](#) » amazon basics G74 6-Button Ergonomic 2.4GHz Wireless Mouse with Mechanical Fast Scrolling User Guide 

Contents

- [1 amazon basics G74 6-Button Ergonomic 2.4GHz Wireless Mouse with Mechanical Fast Scrolling](#)
- [2 OPERATING SYSTEM](#)
- [3 BUTTONS](#)
- [4 SETUP YOUR WIRELESS MOUSE](#)
- [5 SETUP THE CONNECTION BETWEEN YOUR WIRELESS MOUSE AND COMPUTER](#)
- [6 DPI ADJUSTMENT](#)
- [7 Documents / Resources](#)
- [8 Related Posts](#)



amazon basics G74 6-Button Ergonomic 2.4GHz Wireless Mouse with Mechanical Fast Scrolling

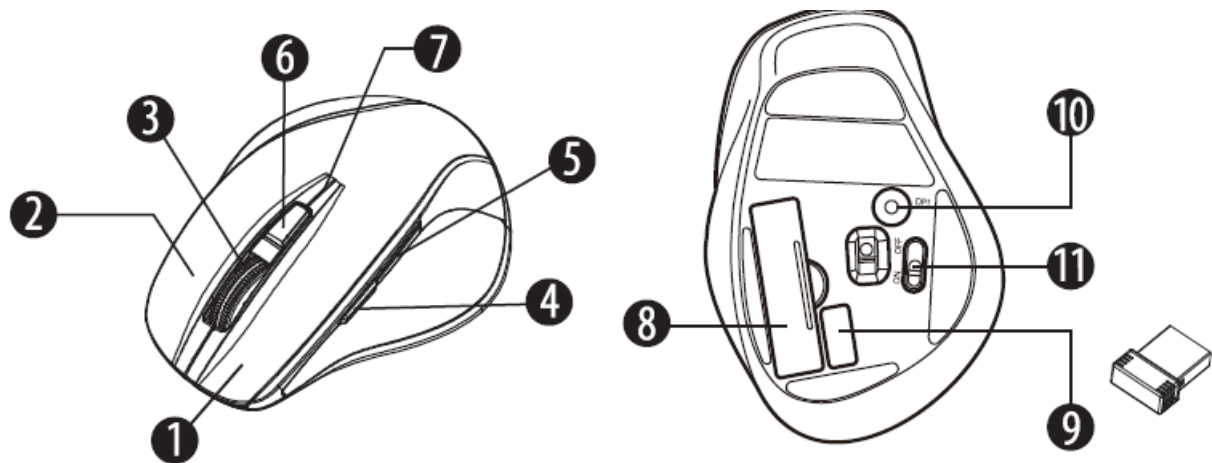


OPERATING SYSTEM

- Microsoft Windows 7
- Microsoft Windows 8
- Microsoft Windows 10 and higher

Key numbers	6 buttons
DPI Resolution	800, 1300, 1600 DPI
Report Rate	125 times/sec
Rated Voltage / Current	50mA
Dimension	116.3 (L) x 82.5 (W) x 53.4 (H)mm
Weight	About 102.5g (battery not included)

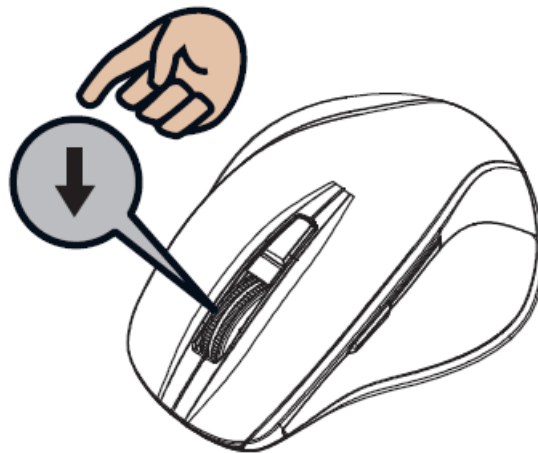
BUTTONS



1. Left-click

2. Right-click
3. Scrolling wheel
4. Forward
5. Backward
6. Middle-click
7. LED indicator
8. Battery Cover
9. Nano receiver and its storage
10. DPI switch
11. OFF/ON switch

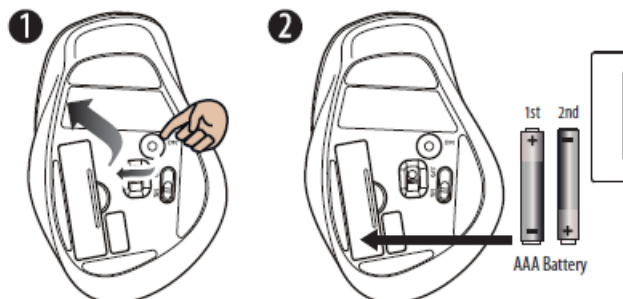
Forward Press to view the next page in the Internet browser



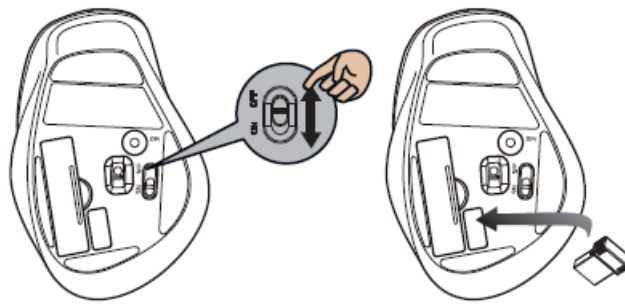
Backward Press to view the previous page in the Internet browser
Hyper Fast Scrolling (Two scrolling modes)
Press and push down the scrolling wheel to switch from Normal Scrolling & Hyper Fast Scrolling modes * Default is Normal Scroll *

SETUP YOUR WIRELESS MOUSE

1. **Step 1:** Take the BATTERY COVER off
2. **Step 2:** Insert the batteries as shown inside the battery storage
3. **Step 3:** Replace the battery cover



4. **Step 4:** Insert the Nano Receiver into your computer USB port
5. **Step 5:** Turn on the Power Switch
6. **Step 6:** Your mouse will connect automatically, letting you use your mouse wirelessly



SETUP THE CONNECTION BETWEEN YOUR WIRELESS MOUSE AND COMPUTER

If your wireless mouse has not been connected to your computer after completing the previous steps, the following information will help you to complete the connection



1. Turn off and then turn on the mouse again
2. Make sure the computer is turn on
3. Insert the Nano receiver and press the middle click and the right-click at the same time
4. The LED indicator will start flashing and start pairing with the Nano receiver on the computer
5. Your mouse will connect automatically

DPI ADJUSTMENT

① → ② → ③ → ① DPI Cycle

	Press DPI switch	
①	LED indicator flashes once	800 DPI
②	LED indicator flashes twice	1300 DPI
③	LED indicator flashes 3 times	1600 DPI



[amazon basics G74 6-Button Ergonomic 2.4GHz Wireless Mouse with Mechanical Fast Scrolling](#) [pdf] User Guide
MU93, PRDMU93, G74, G6K-B01, B08P6PL5R3, G74 6-Button Ergonomic 2.4GHz Wireless Mouse with Mechanical Fast Scrolling, G74, 6-Button Ergonomic 2.4GHz Wireless Mouse with Mechanical Fast Scrolling