



# amazon basics BOB6148YKN USB 3.1 Flash Drive Instruction Manual

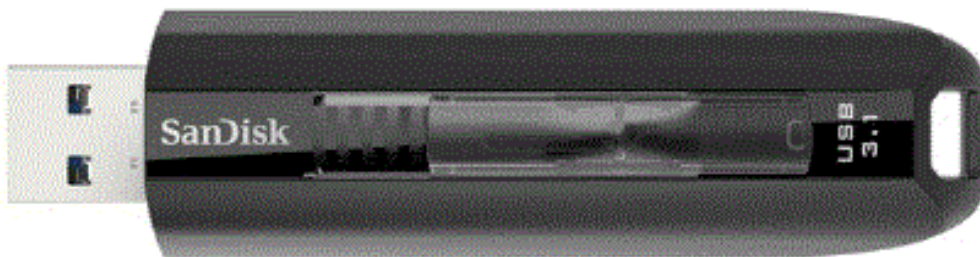
[Home](#) » [amazon basics](#) » amazon basics BOB6148YKN USB 3.1 Flash Drive Instruction Manual 

## Contents

- [1 amazon basics BOB6148YKN USB 3.1 Flash Drive](#)
- [2 USB 3.1 Flash Drive](#)
- [3 Package Content](#)
- [4 INSTRUCTIONS](#)
- [5 Documents / Resources](#)
  - [5.1 References](#)

# amazon basics

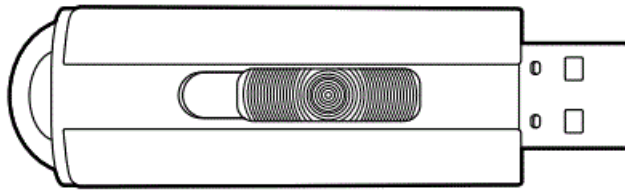
amazon basics BOB6148YKN USB 3.1 Flash Drive



## USB 3.1 Flash Drive

- BOB6148YKN
- BOB61DGG18

## Package Content

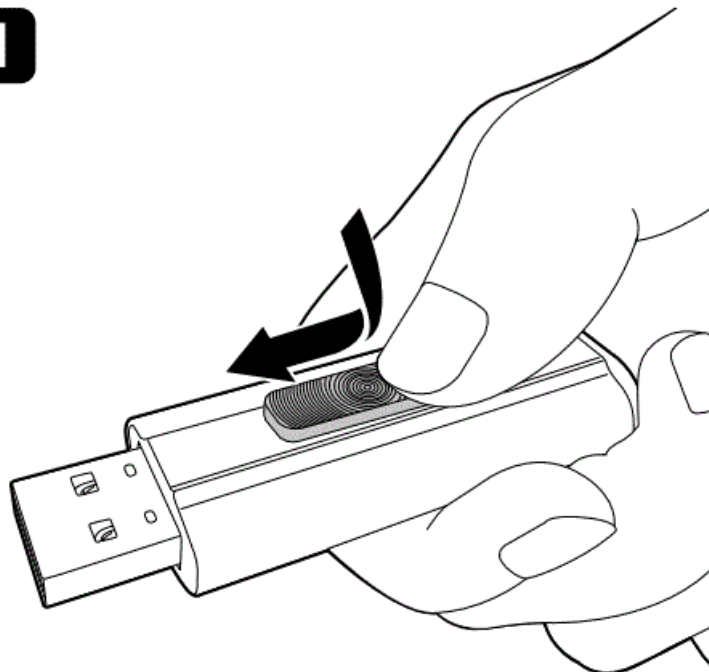


**QSG**

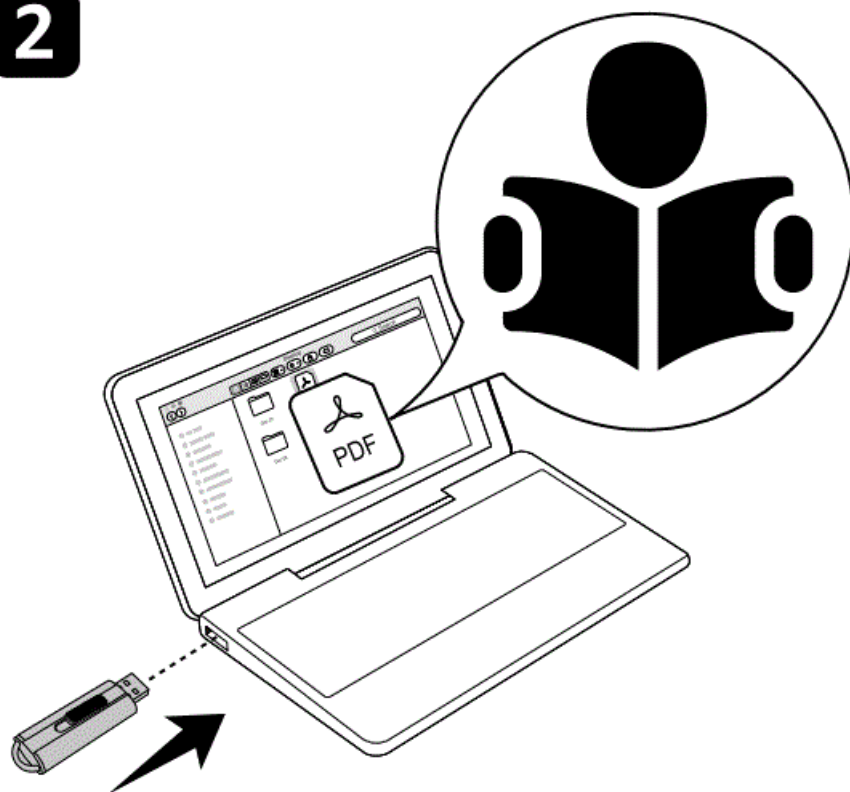
- **Storage:** Actual storage capacity shown by a device's OS may be less than the capacity indicated on the product label due to different measurement standards.
- **Model BOB61 DGG18 (256 GB):** The available storage capacity is higher than 230 GB.
- **Model BOB6148YKN (1 28 GB):** The available storage capacity is higher than 115 GB.
- **File system:** FAT32 is the factory default drive file system which is read/write compatible with Windows and Mac OS. If you are transferring a file size over 4GB, please reformat the drive to exFAT or NTFS.
- **Speed:** 15x faster than USB 2.0 drives; USB 3.1 Gen 1 / USB 3.0 port required on host devices to achieve optimal read/ write speed; Backward compatible with USB 2.0 host devices at lower speed. Read speeds up to 130Mbps and write speeds up to 30Mbps are based on internal tests conducted under controlled conditions. Actual read/write speeds also vary depending on devices used, transfer file size, types, and other factors.

## INSTRUCTIONS

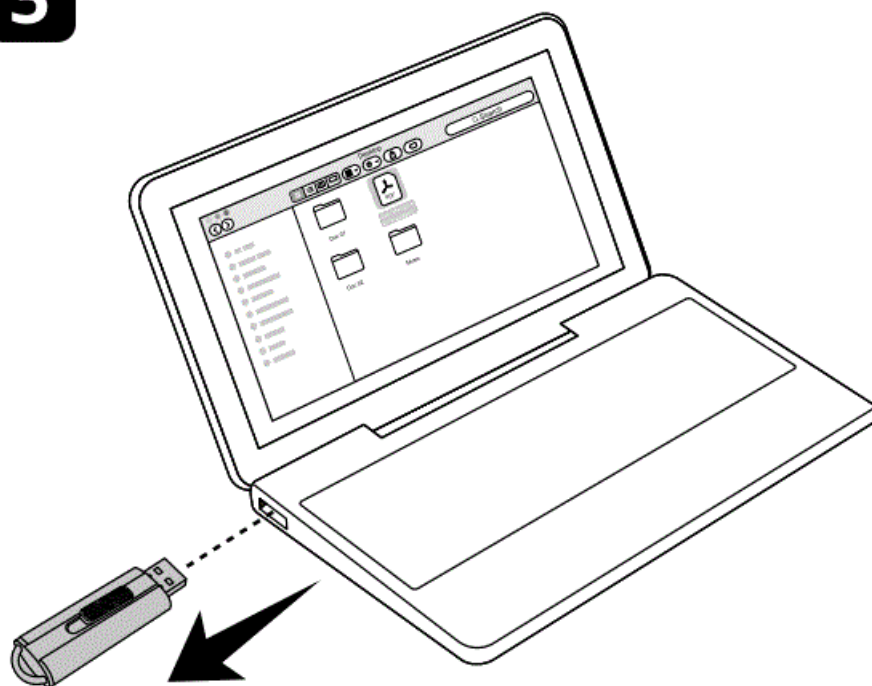
**1**



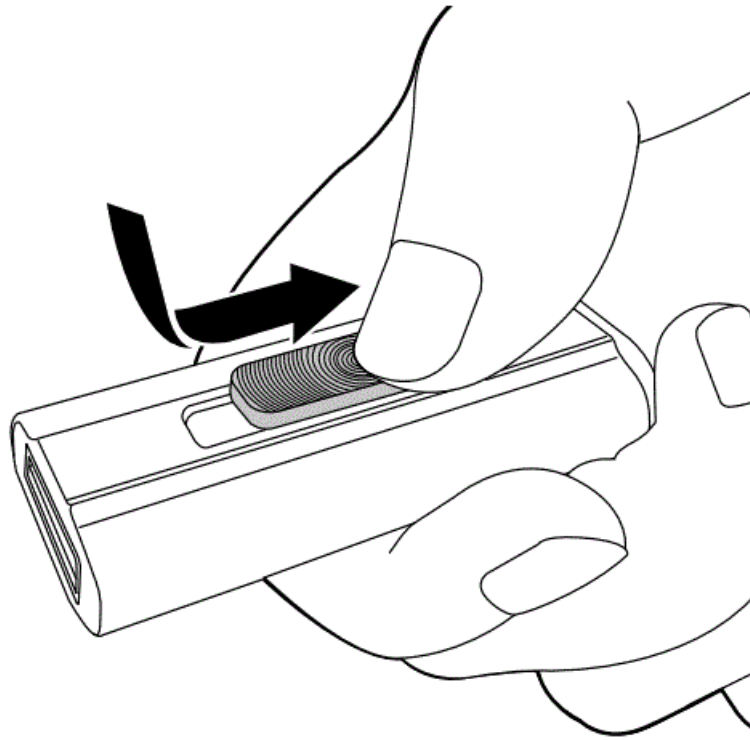
2





3



4



## Documents / Resources

  <small>USB 3.1 Flash Drive • CH USB 3.1 • USB 3.1-Flash-Laufwerk • Ultra Flash USB 3.1 • Unified Flash USB 3.1 • USB 3.1 Flashdrive • USB 3.1 フラッシュドライブ BOB6148YKN, BOB610G518</small>	<a href="#">amazon basics BOB6148YKN USB 3.1 Flash Drive</a> [pdf] Instruction Manual BOB6148YKN USB 3.1 Flash Drive, BOB6148YKN, USB 3.1 Flash Drive, Flash Drive, Drive
--	--

## References

- [User Manual](#)