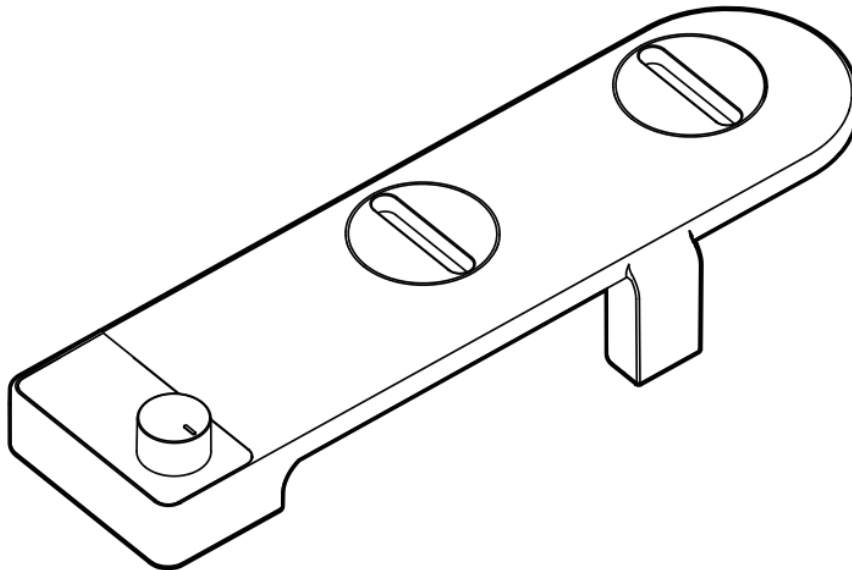




amazon basics B0VCVYX3F Nonelectrical Bidet Attachment for Toilet User Manual

[Home](#) » [amazon basics](#) » amazon basics B0VCVYX3F Nonelectrical Bidet Attachment for Toilet User Manual 

amazon basics



Nonelectrical Toilet Bidet with Water Adjustment
BOBCVYXL3F

Contents

- [1 Important Safeguards](#)
- [2 Toilet Compatibility and Fit](#)
- [3 Tools Needed](#)
- [4 Before First Use](#)
- [5 Product Description](#)
- [6 Installation](#)
- [7 Use](#)
- [8 Cleaning and Maintenance](#)
- [9 Disposal](#)
- [10 Frequently Asked Questions](#)
- [11 Specifications](#)
- [12 Feedback and Help](#)
- [13 Documents / Resources](#)
 - [13.1 References](#)
- [14 Related Posts](#)

Important Safeguards



Read these instructions carefully and retain them for future use. If this product is passed to a third party, then these instructions must be included.

When using the product, basic safety precautions should always be followed to reduce the risk of injury including the following:

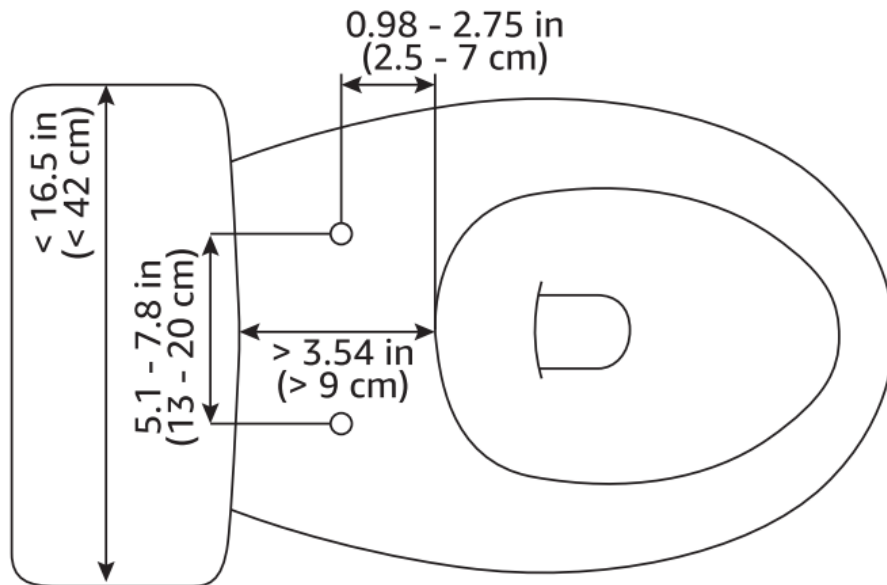
- For domestic use only.
- This product must be installed by an adult.
- Keep children and pets away while installing the product.
- Do not use this product if any parts are missing, damaged, or worn.
- Regularly examine the product for wear and tear. Stop using the product at first sign of damage or if parts become detached.
- Do not use power tools to assemble the product. Power tools may strip or damage the parts.
- Clean the toilet and surrounding area to maintain hygiene before installing the product.
- Always turn off the water supply before installing or performing maintenance on the product.
- Do not over-tighten any components as this may result in leaks and other damage.
- Check for leaks periodically after installation.
- Connect only to a water supply from a fresh water source. Do not use a hot water supply line.
- Do not use toilet deodorizer on plastic parts. Immediately wipe off any toilet deodorizer that makes contact with plastic parts.
- Do not expose the bidet to direct sunlight.
- Do not place a heater near the bidet body.
- When the bidet is not to be used for an extended period of time, close the water shut-off valve.
- Perform anti-freezing procedures when there is possibility for freezing to occur.

Toilet Compatibility and Fit

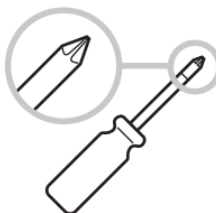
- This product is compatible with a standard two-piece toilet consisting of a toilet bowl and a tank with visible

water supply connections.

- Check the toilet measurements to ensure best fit.



Tools Needed



Plumber's tape

Before First Use

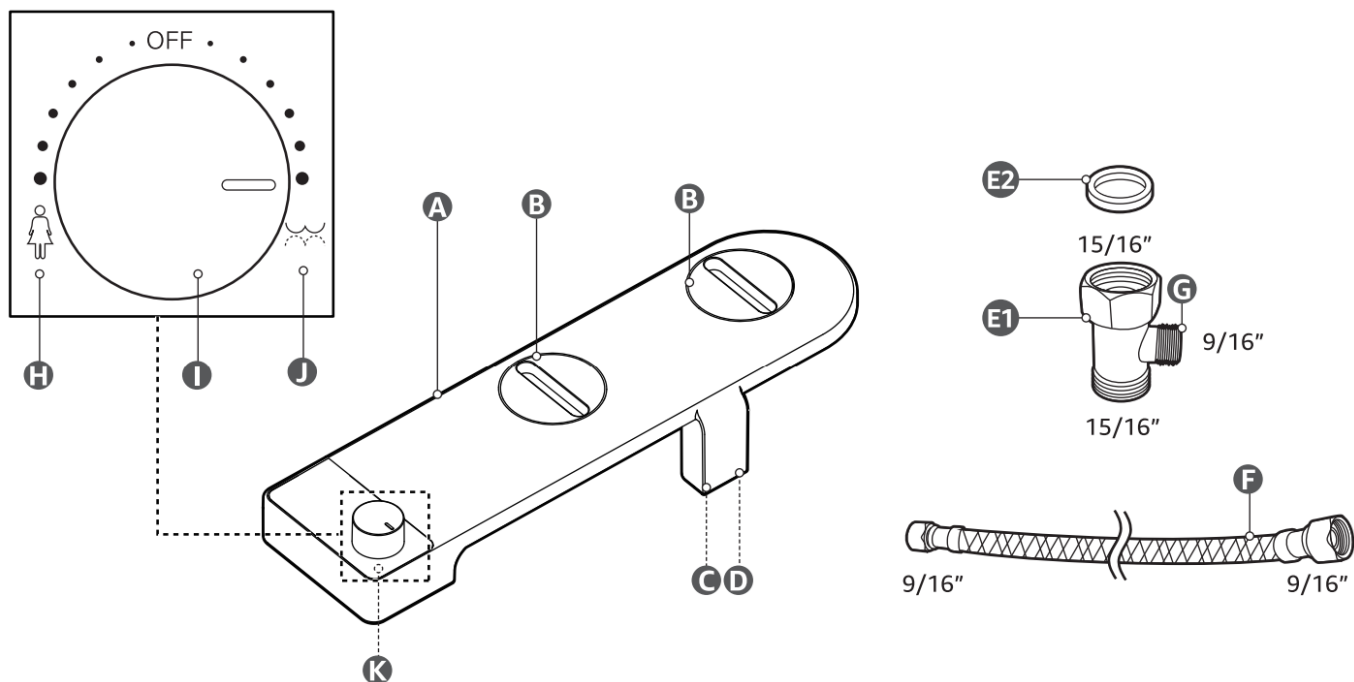


DANGER Risk of suffocation!

Keep any packaging materials away from children and pets — these materials are a potential source of danger, e.g. suffocation.

- Remove all the packing materials.
- Remove and review all components before installation.
- Check the product for transport damages.

Product Description

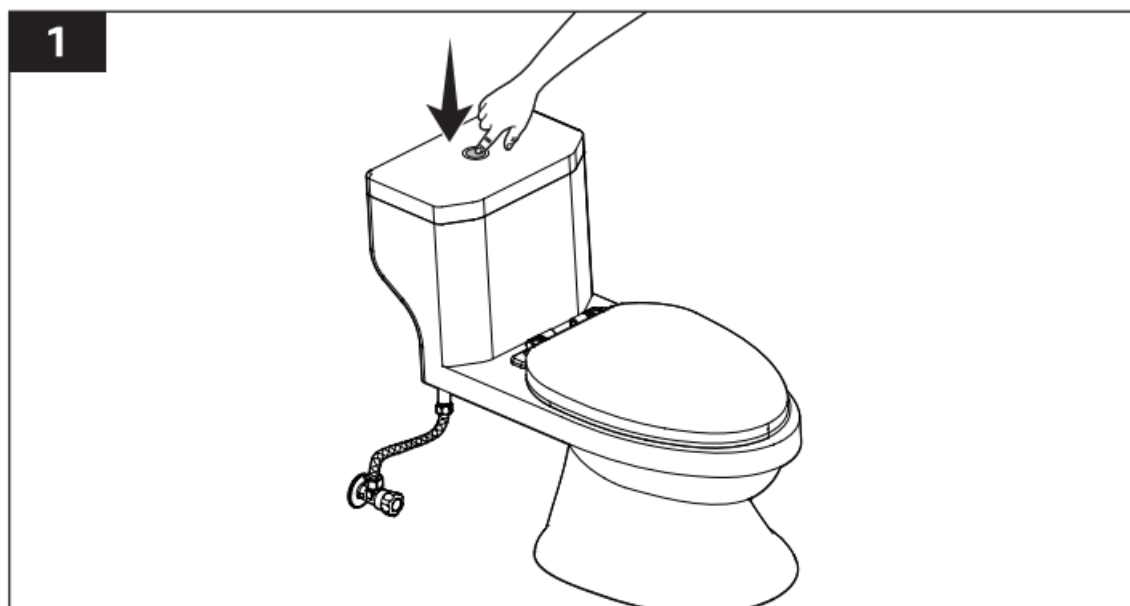


A Bidet
 B Adjustable flanges
 C Feminine wash spray arm/nozzle
 D Rear wash spray arm/nozzle
 E1 T-shape adapter
 E2 Gasket

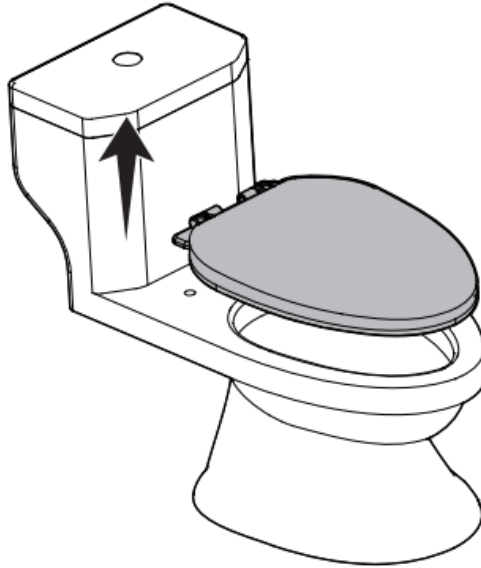
F Flexible hose
 G Water outlet
 H Feminine wash setting
 I Wash setting knob
 J Rear wash setting
 K Bidet inlet

Installation

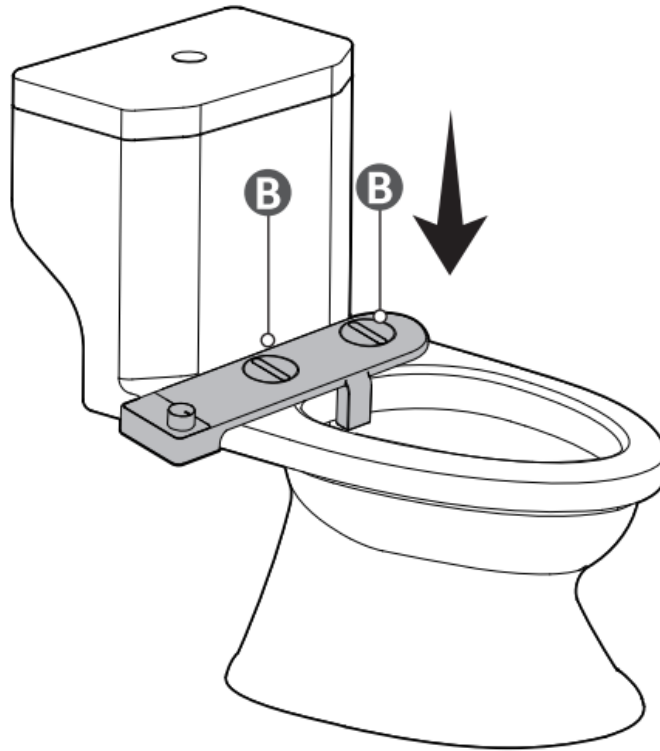
1. Turn off the main water shut off valve. Flush the toilet to drain the toilet tank (Fig. 1). Hold the lever or button down until the tank empties.



2. Remove the existing toilet seat according to the toilet's design (Fig. 2).

2

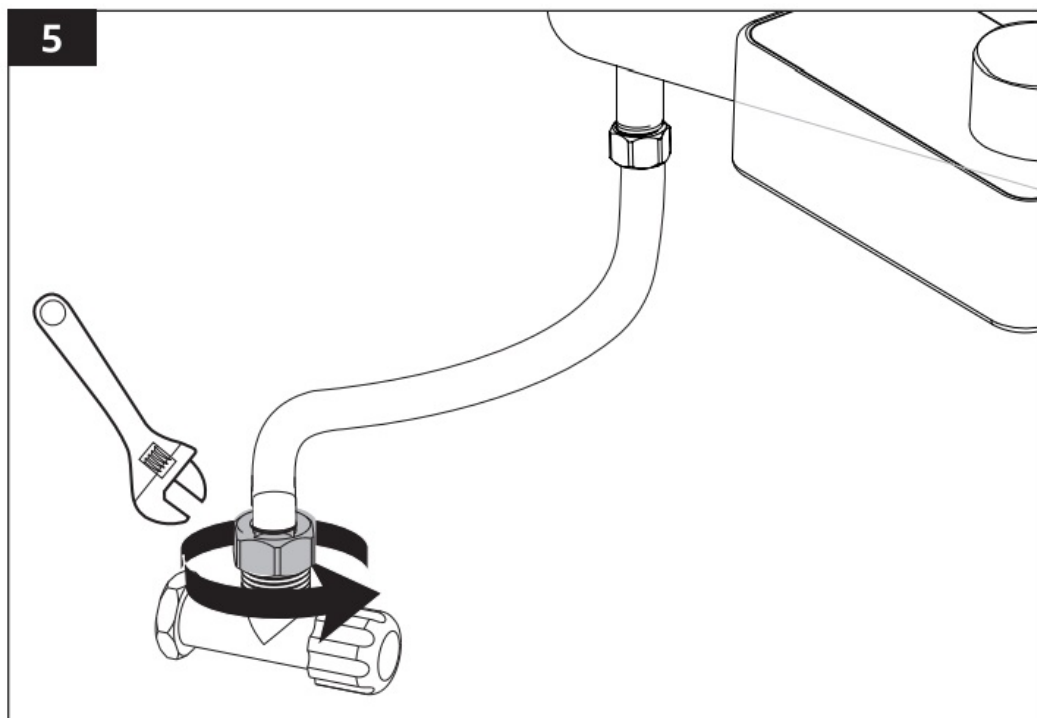
3. Place the product on the toilet so that the adjustable flanges (B) align with the fixing holes of the toilet (Fig. 3).

3

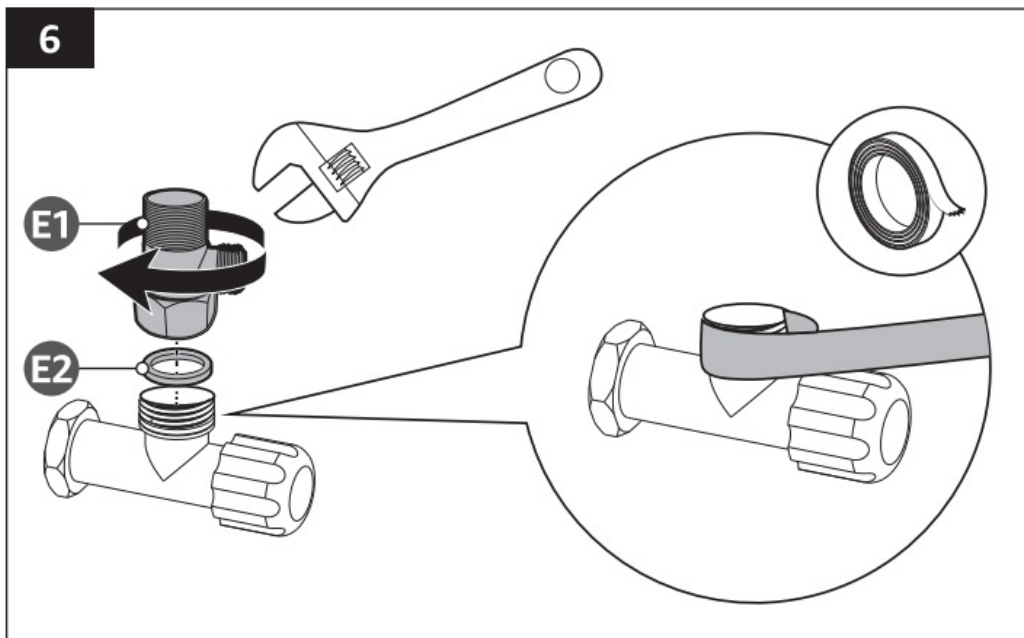
4. Refit the existing toilet seat over the bidet (A) (Fig. 4).



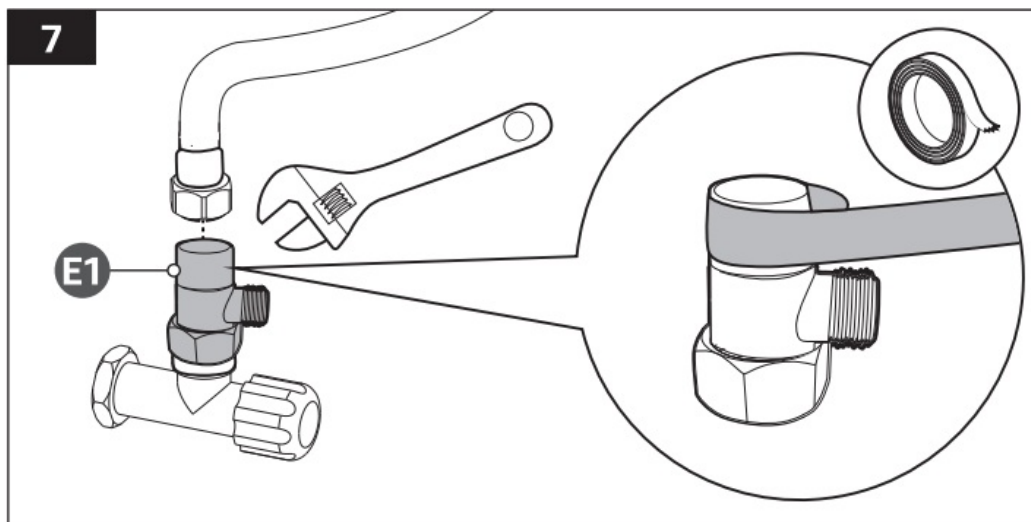
5. Loosen the existing toilet's flexible hose from the main water supply (Fig. 5).



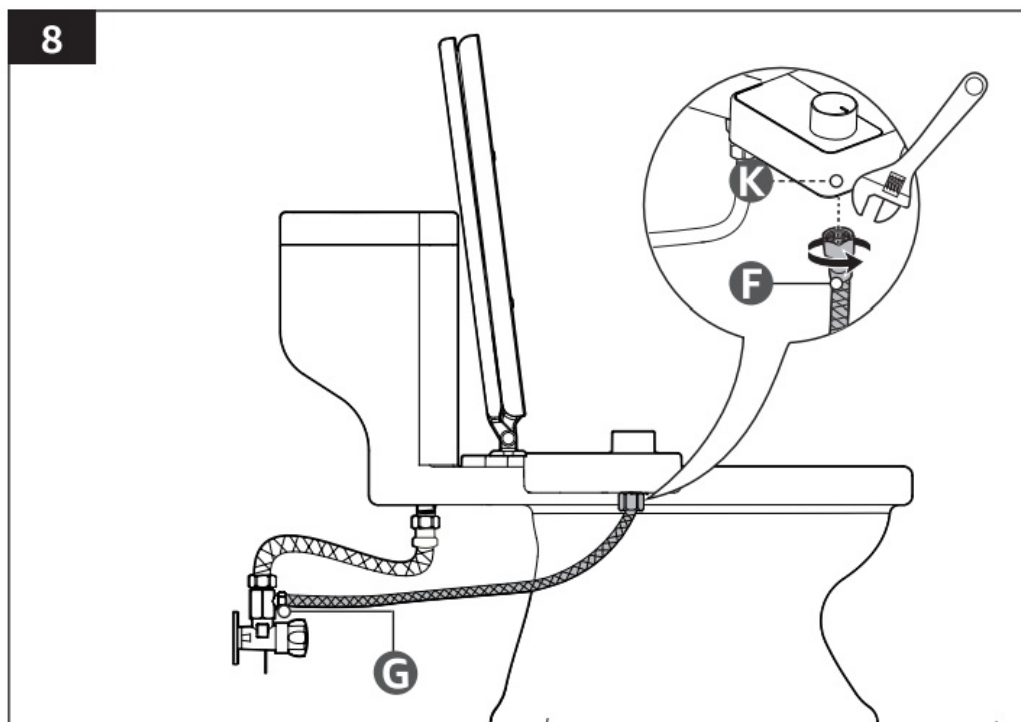
6. Apply plumber's tape on the top thread of the main water supply. Install the gasket (E2) in the T-shape adapter (E71), then attach it to the main water supply.



7. Apply plumber's tape on the top thread of the T-shape adapter (E1). Connect the existing flexible hose to the T-shape adapter (E1) (Fig. 7).



8. Connect the flexible hose (F) to the bidet inlet (K) and the water outlet (G) (Fig. 8). Ensure the gaskets are present inside each end of the flexible hose (F).



9. Slowly turn on the water shut-off valve.
10. Carefully check all the connections for any leaks.

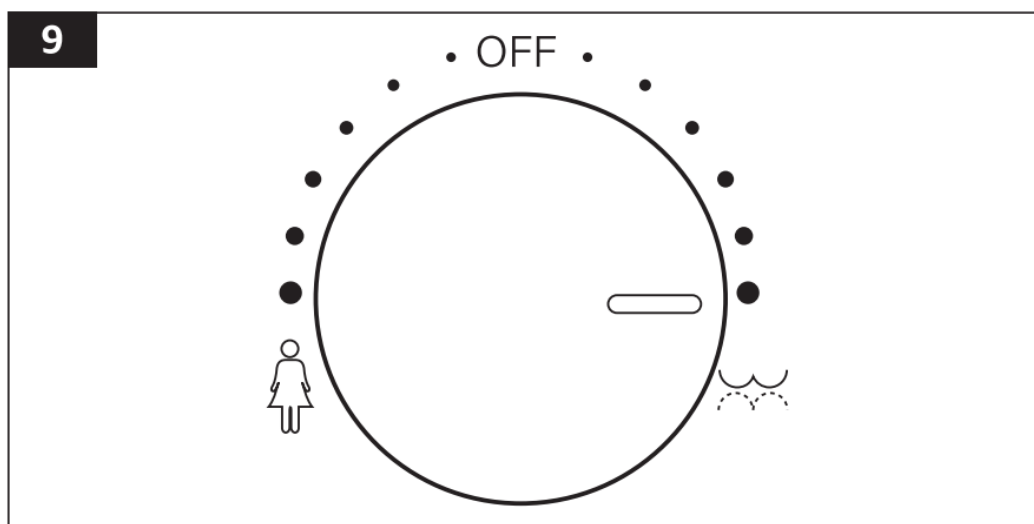
Use



CAUTION Risk of injury!

Ensure the water pressure is at a comfortable level. High water pressure may result in minor injury or discomfort.

1. Sit firmly on the toilet seat.
2. Turn the wash setting knob (I) to the desired setting and pressure level (Fig. 9).



3. When finished, turn the wash setting knob (I) to the OFF position.

Cleaning and Maintenance

8.1 Cleaning

- The nozzles (C, D) self-clean before they spray water. However, it is important to periodically check for stains and mold.

- To clean the product, use a mild cleaner suitable for plastic and wipe with a soft, slightly damp cloth. Wipe with a soft, dry cloth to dry the product.
- Do not use bleach or cleaners containing bleach.
- Never use corrosive detergents, wire brushes, abrasive scourers, metal or sharp utensils to clean the product. They may cause damage to the product's surface.

Disposal



Dispose of the product according to local regulations. If in doubt, consult your local authorities.

Frequently Asked Questions

Problem	Solution
The water spray is weak.	<ul style="list-style-type: none"> • Fully open the water shut-off valve. • Turn the wash setting knob (I) to the maximum pressure level.
Water does not come out of the nozzle.	<ul style="list-style-type: none"> • The water shut-off valve is turned off. Turn it back on. • The water supply pressure is too low. Increase the external water pressure.
Water leaks from the bidet base.	<ul style="list-style-type: none"> • The water supply pressure is too high. Reduce the external water pressure. • Ensure the regulator is positioned properly in place. • The gasket inside the flexible hose (F) or T-shape adapter (EI) are missing or are worn. Replace gasket(s) with a new one of the same type.

Specifications

Water source	Fresh cold tap water
Maximum water temperature	104 °F (+40 °C)

Feedback and Help

We would love to hear your feedback. To ensure we are providing the best customer experience possible, please consider writing a customer review.

Scan QR Code below with your phone camera or QR reader:



https://www.amazon.com/review/review-your-purchases/listing/?ref=HPB_UM_CR

If you need help with your Amazon Basics product, please use the website or number below.

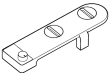


amazon.com/gp/help/customer/contact-us



+1877-485-0385

Documents / Resources

<div><div>amazon basics</div><div></div><div><div><div>Important Safety Information</div><div>Read the Safety Information and Warnings on the inside of the box.</div><div>Keep this manual in a safe place for future reference.</div></div><div><div>Page 1 of 1</div><div>Page 2 of 2</div><div>Page 3 of 3</div></div></div></div>	<p>amazon basics B0VCVYX3F Nonelectrical Bidet Attachment for Toilet [pdf] User Manual B0VCVYX3F Nonelectrical Bidet Attachment for Toilet, B0VCVYX3F, Nonelectrical Bidet Attachment for Toilet, Bidet Attachment for Toilet, Attachment for Toilet</p>
---	--

References

- [a Amazon Sign In](#)
- [a Amazon Iniciar sesión](#)
- [a Amazon Sign-In](#)
- [User Manual](#)