



amazon basics B09S6XNN3 Corner Desk Corner Desk Instruction Manual

[Home](#) » [amazon basics](#) » amazon basics B09S6XNN3 Corner Desk Corner Desk Instruction Manual 

Contents

- [1 amazon basics B09S6XNN3 Corner Desk Corner Desk](#)
- [2 Before Getting Started](#)
- [3 Cleaning & Maintenance](#)
- [4 Instructions](#)
- [5 Specifications](#)
- [6 Contents](#)
- [7 ASSEMBLY](#)
- [8 Documents / Resources](#)
 - [8.1 References](#)
- [9 Related Posts](#)



amazon basics B09S6XNN3 Corner Desk Corner Desk



Before Getting Started

- Read the instructions carefully prior to assembling the product.
- When you open the package with a sharp tool like a cutter knife, be careful not to damage the components inside.
- Carefully remove all packaging materials and retain for future use.
- Keep all hardware parts and packaging out of reach of small children.
- Choose a clean, level, spacious assembly area. Avoid hard surfaces that may damage the product.
- Ensure that you have all required contents for complete assembly.
- Take care when lifting. Assemble the product in close proximity to where you intend to position the item.
- Do not over tighten the screws and bolts as this may damage the threads.
- When you have finished assembling the product, place it on a flat surface and make sure it is stable before use.
- Do not let children play with this product.
- It is recommended that two people handle and assemble the item.

DANGER

Risk of suffocation! Keep any packaging materials away from children.

Cleaning & Maintenance

- Keep the product away from direct heat and sunlight.
- Prolonged exposure to heat sources may cause glazing, melting and scorching, or even cause color to fade.
- Regular vacuuming or light brushing helps to remove dirt and prevent soil build-up, which increases the appearance wear.
- Periodically (every 90 days) make sure that the screws are fully tightened.
- Wood Furniture Care

Instructions

- Use a soft, clean cloth that will not scratch the surface when dusting.
- Use of furniture polishes is not necessary. Should you choose to use polishes, test in an inconspicuous area first.

- Using solvents of any kind on your product may damage your product's finish.
- Never use water to clean your product as it may cause damage to the finish.
- Always use coasters under beverage glasses and flowerpots.
- Liquid spills should be removed immediately. Using a soft clean cloth, blot the spill gently. Avoid rubbing.

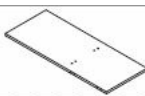
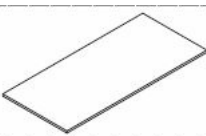


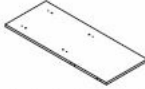



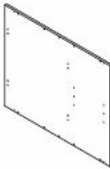












Specifications

- Dimensions (W x H x D): 47.2 x 30.3 x 35.4" (120 x 77 x 90 cm)

Feedback and Help review your purchases t the website beo with your Movian product, please use [contact.co.k/gp/help/customer/](https://www.contact.co.k/gp/help/customer/)

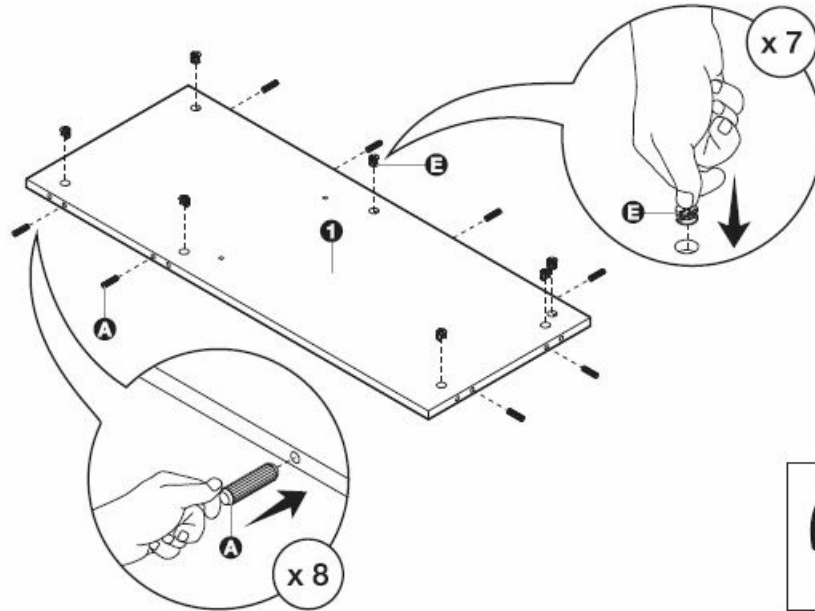
Contents

Before getting started, ensure the package contains the following components:

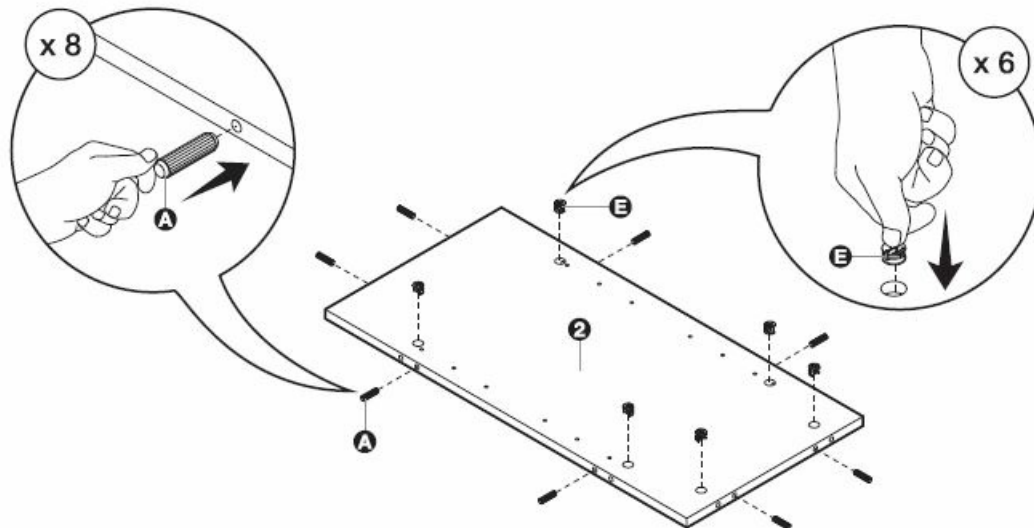
1		x1	11		x1
2		x1	A		x22
3		x1	B		x8
4		x1	C		x27
5		x1	D		x4
6		x1	11b		x8
7		x2	E		x27
8		x1	R		x1
9		x1	S		x6
10		x1	T		x12
			Z		x1

ASSEMBLY

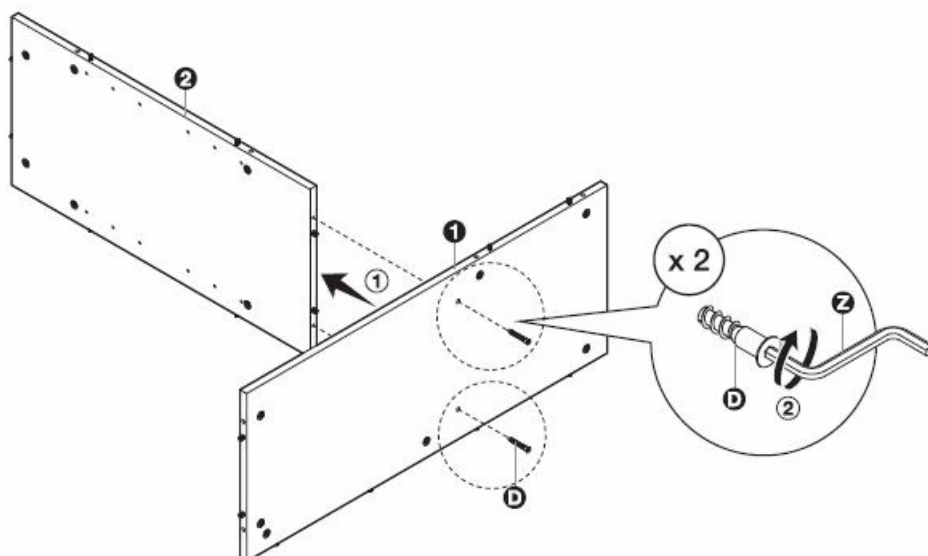
1

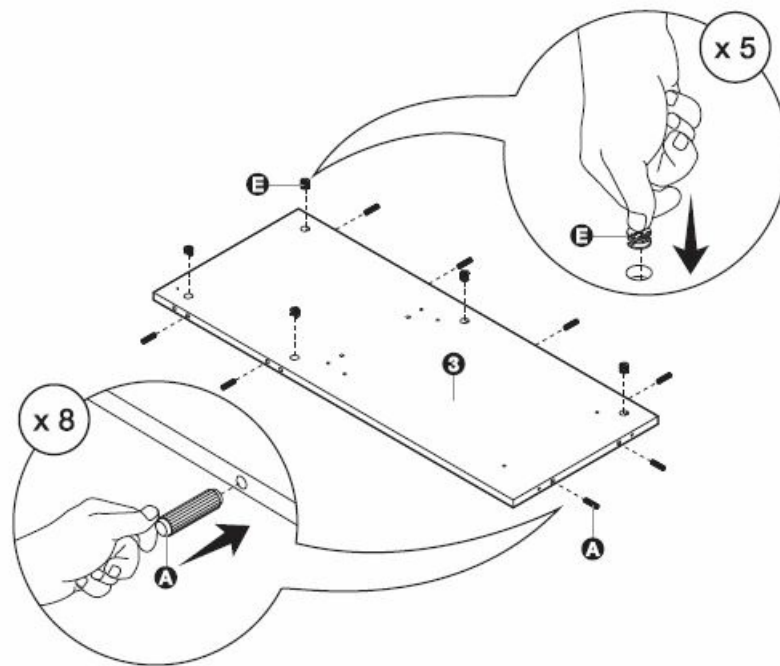


2

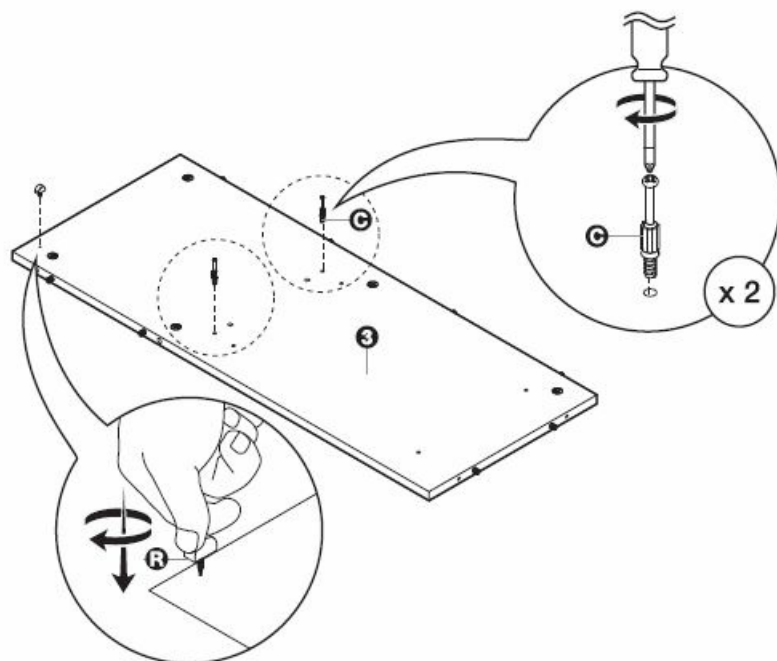


3

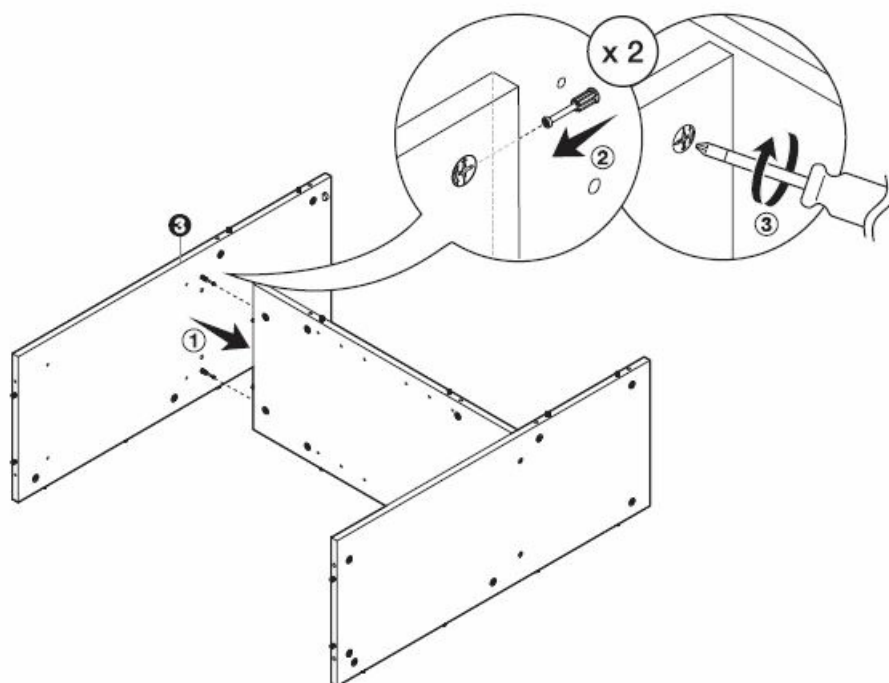




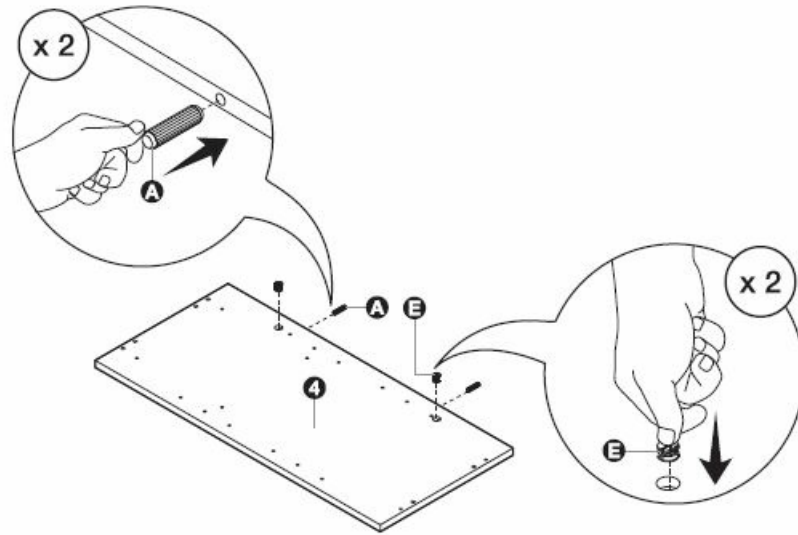
5



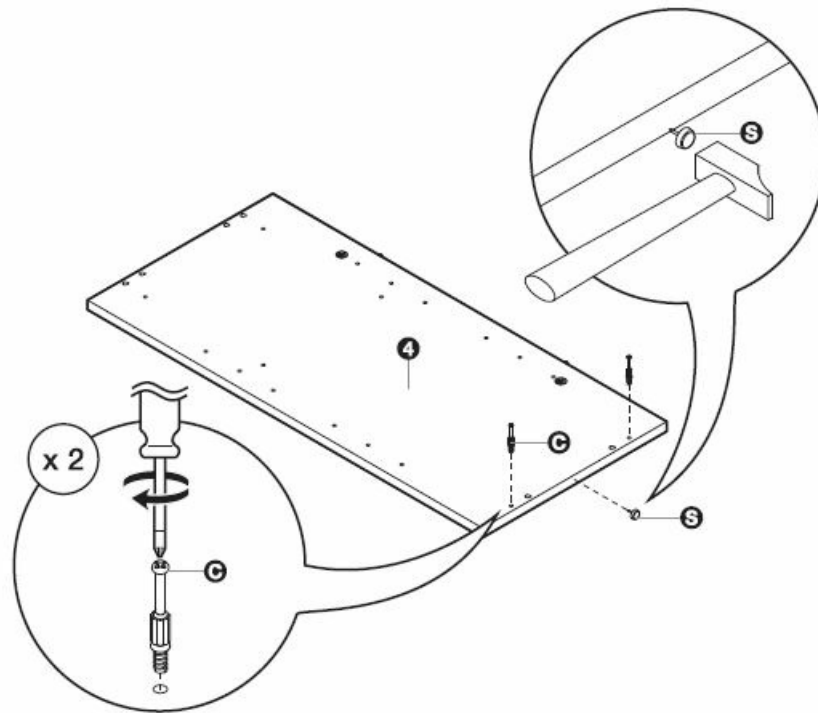
6



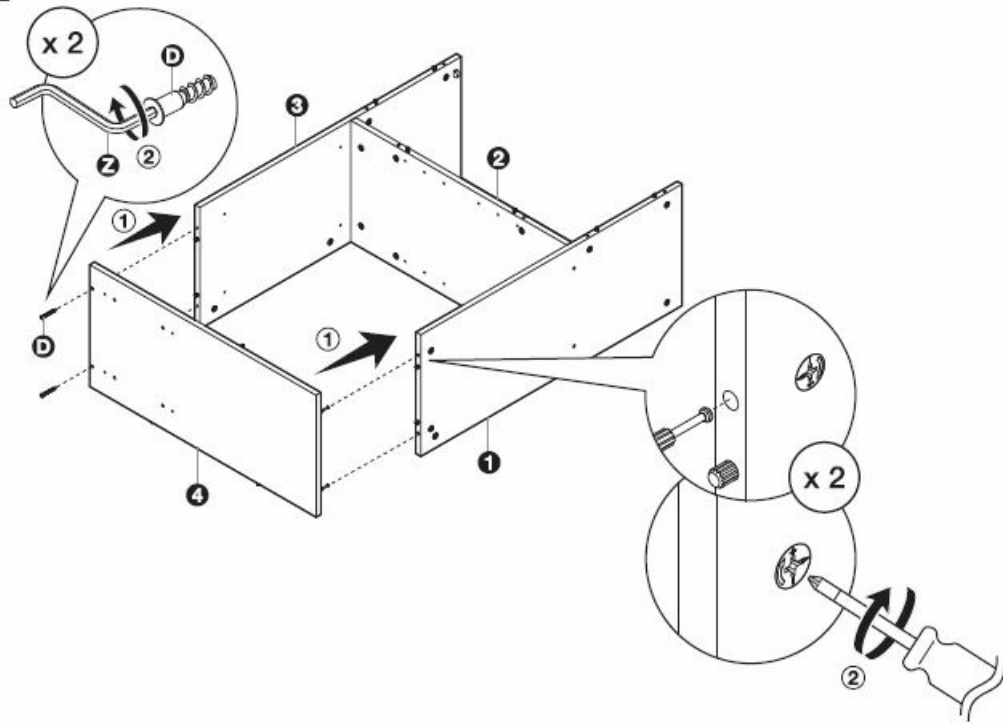
7



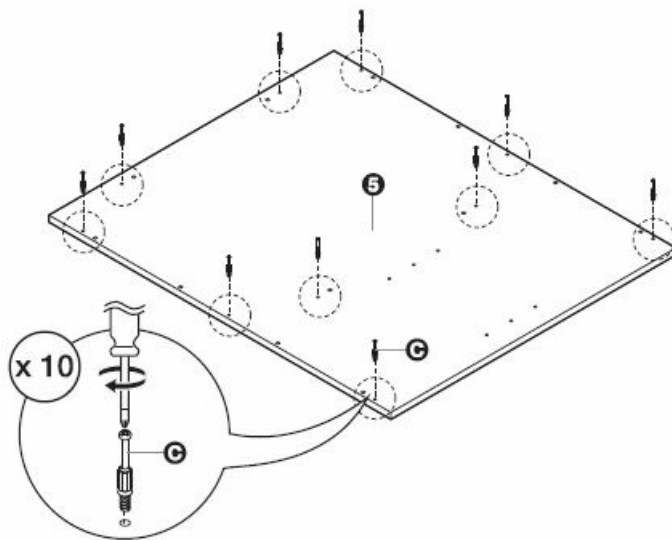
8



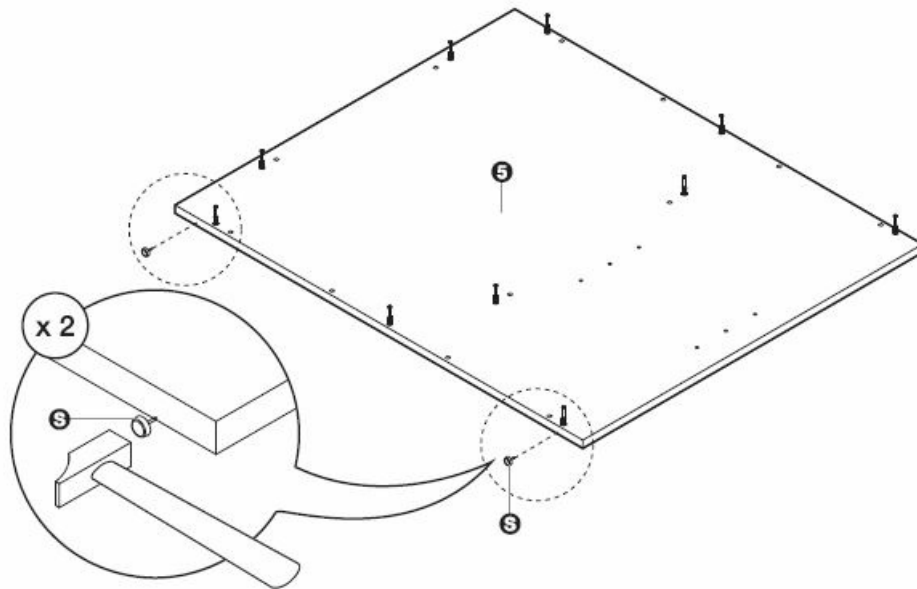
9



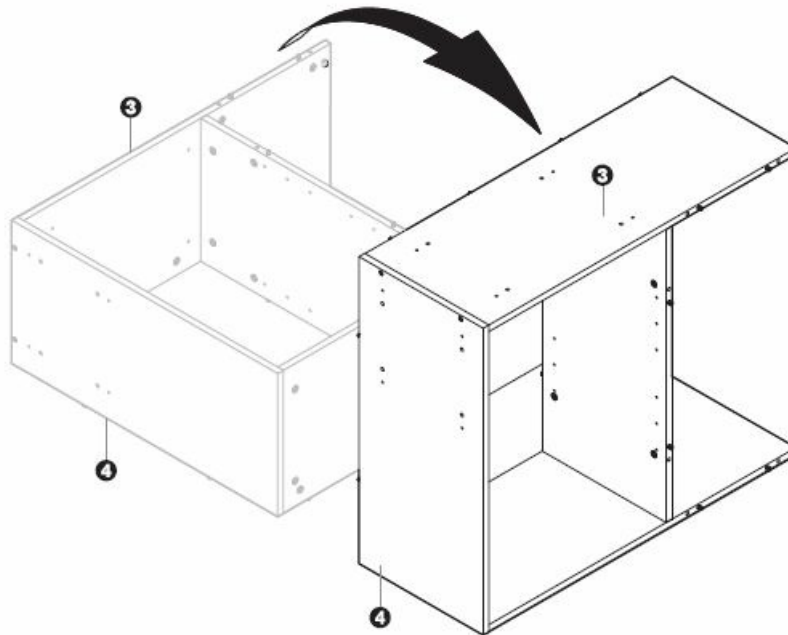
10



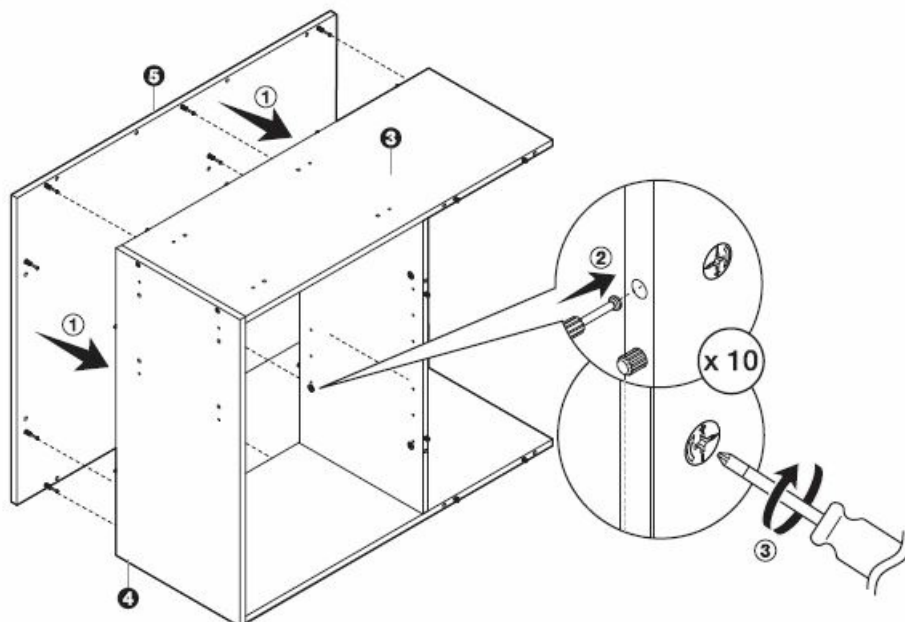
11



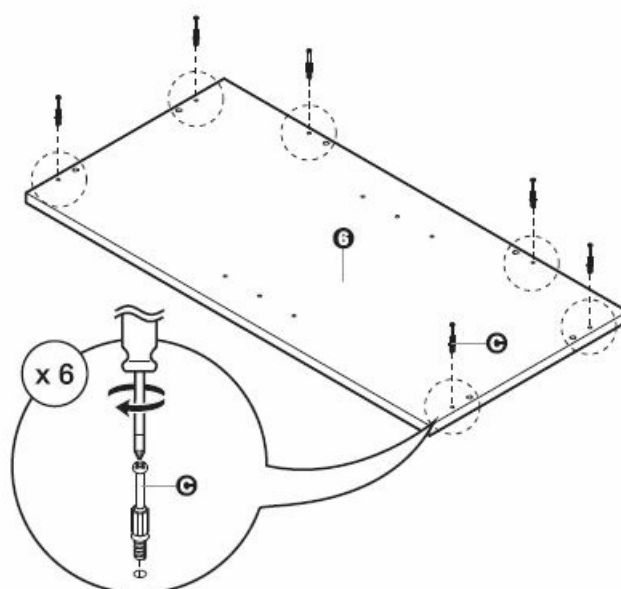
12



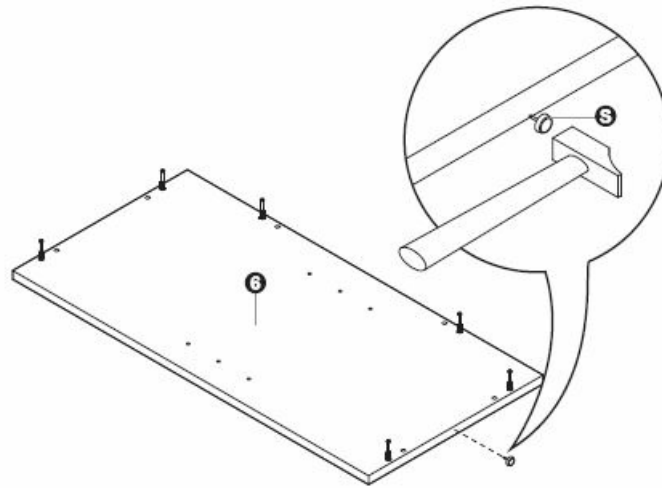
13



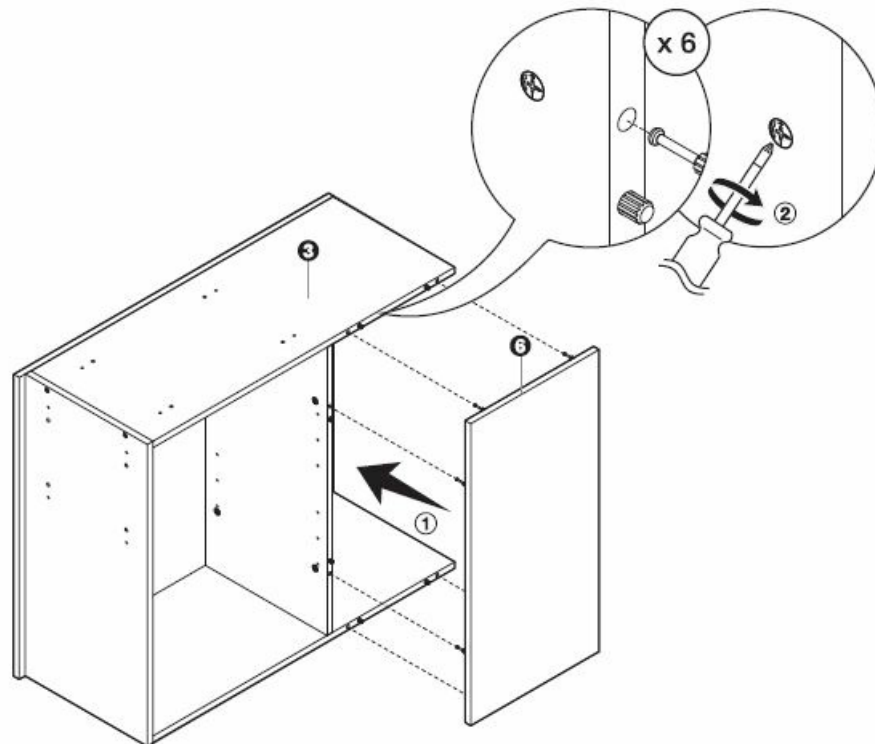
14



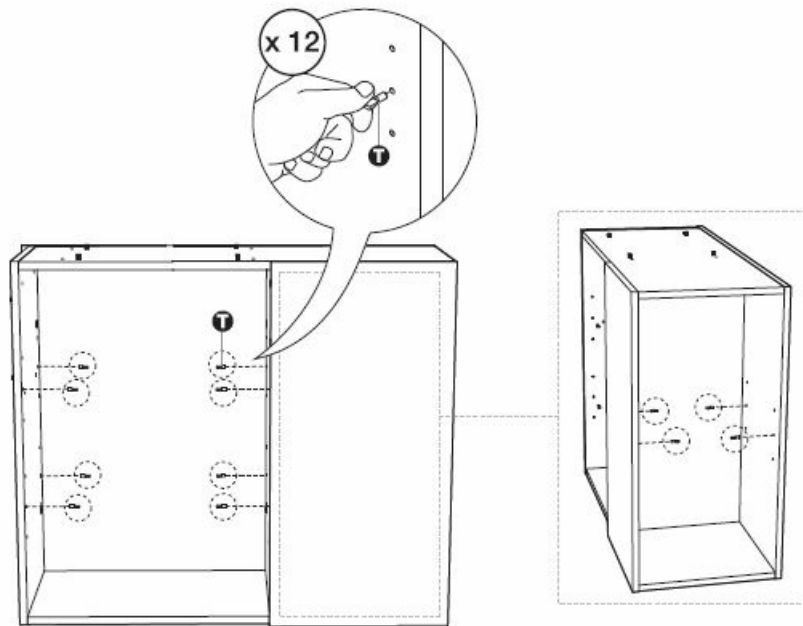
15



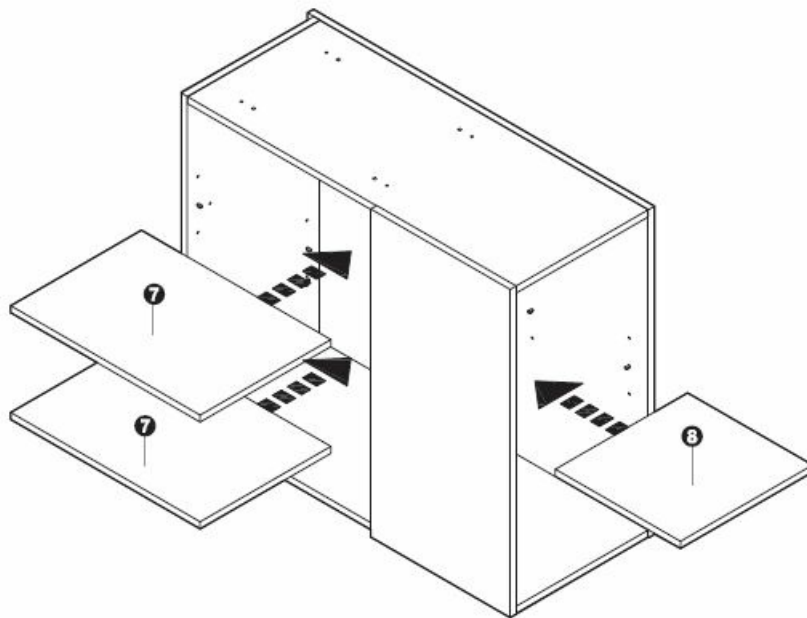
16



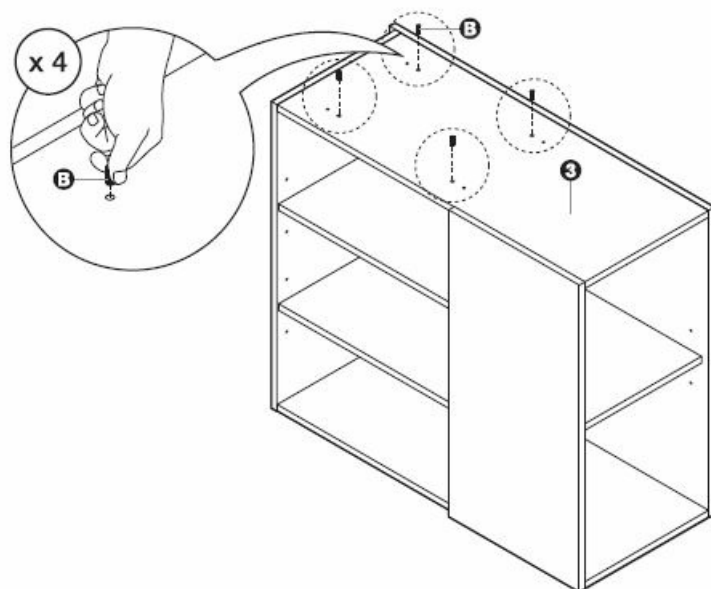
17



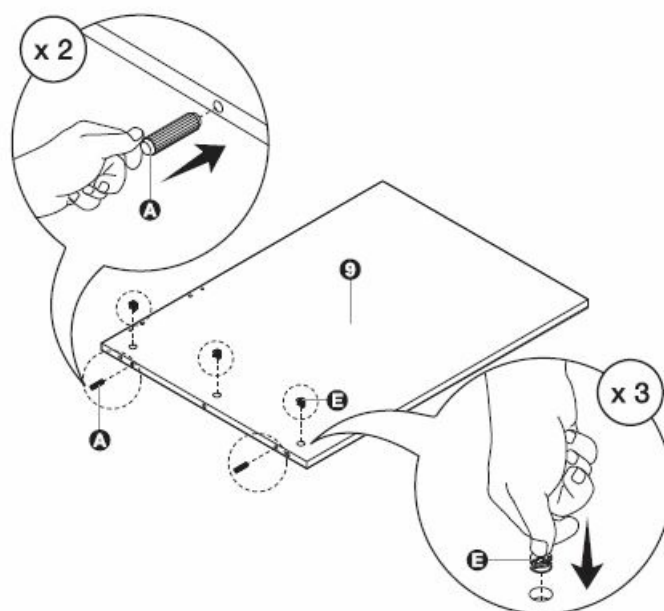
18



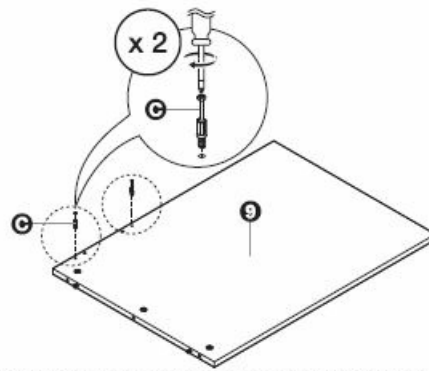
19



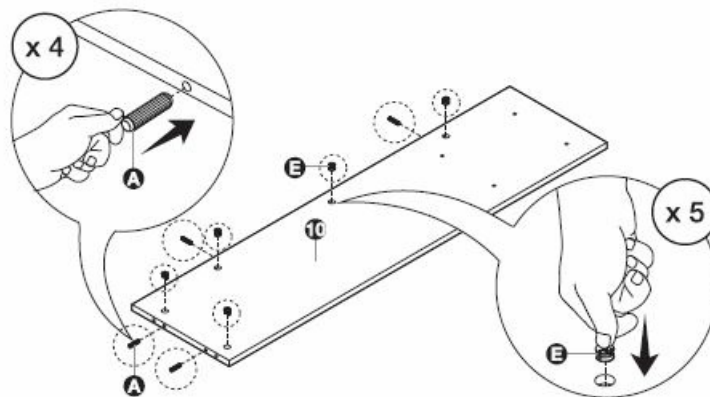
20



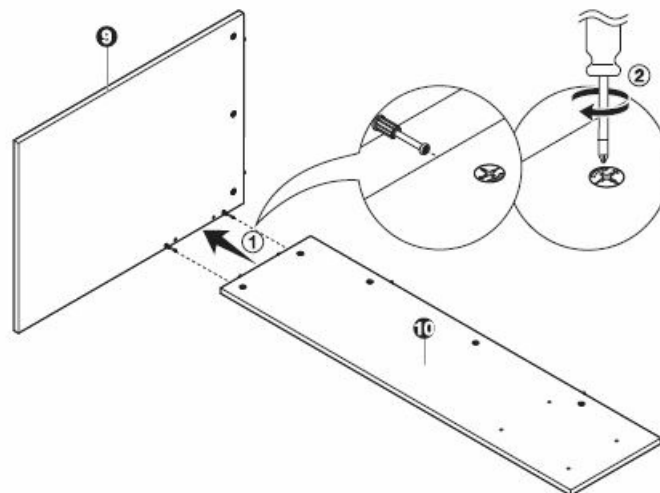
21



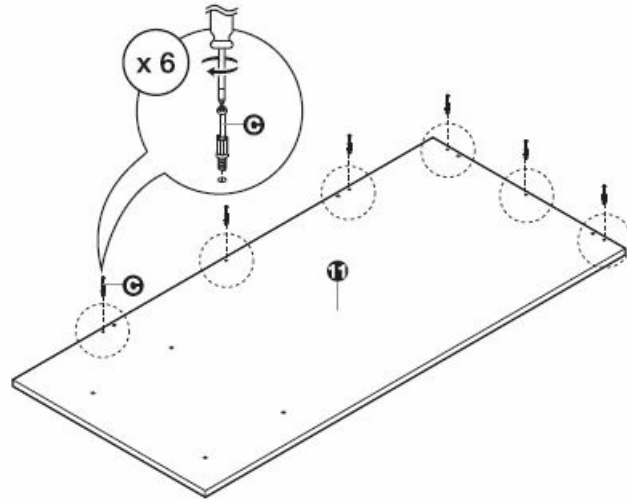
22



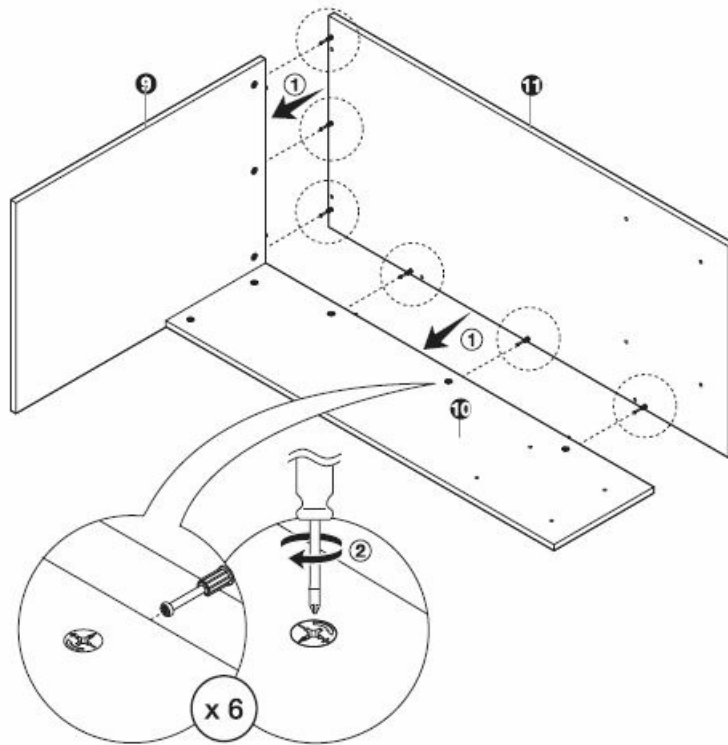
23



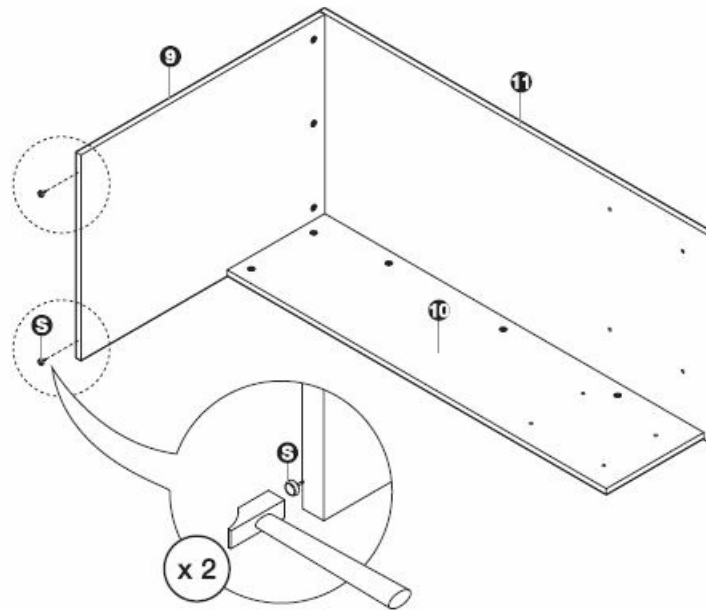
24



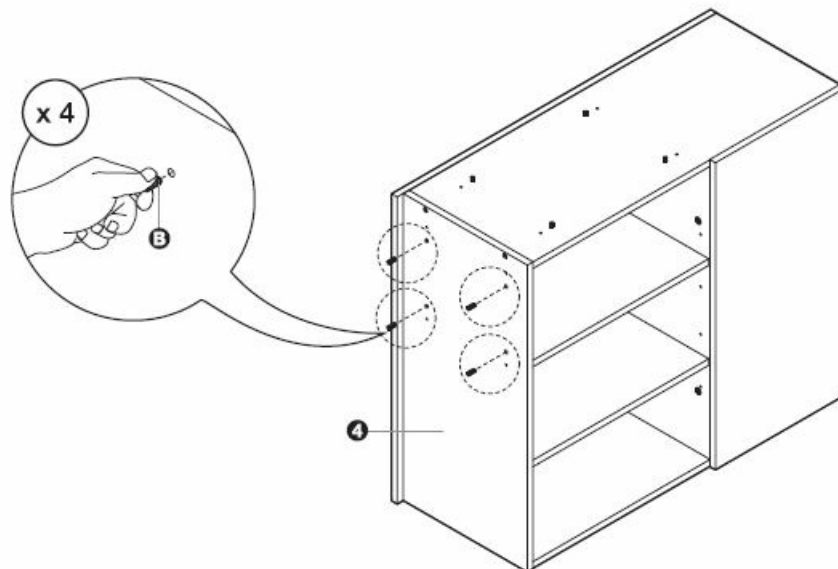
25

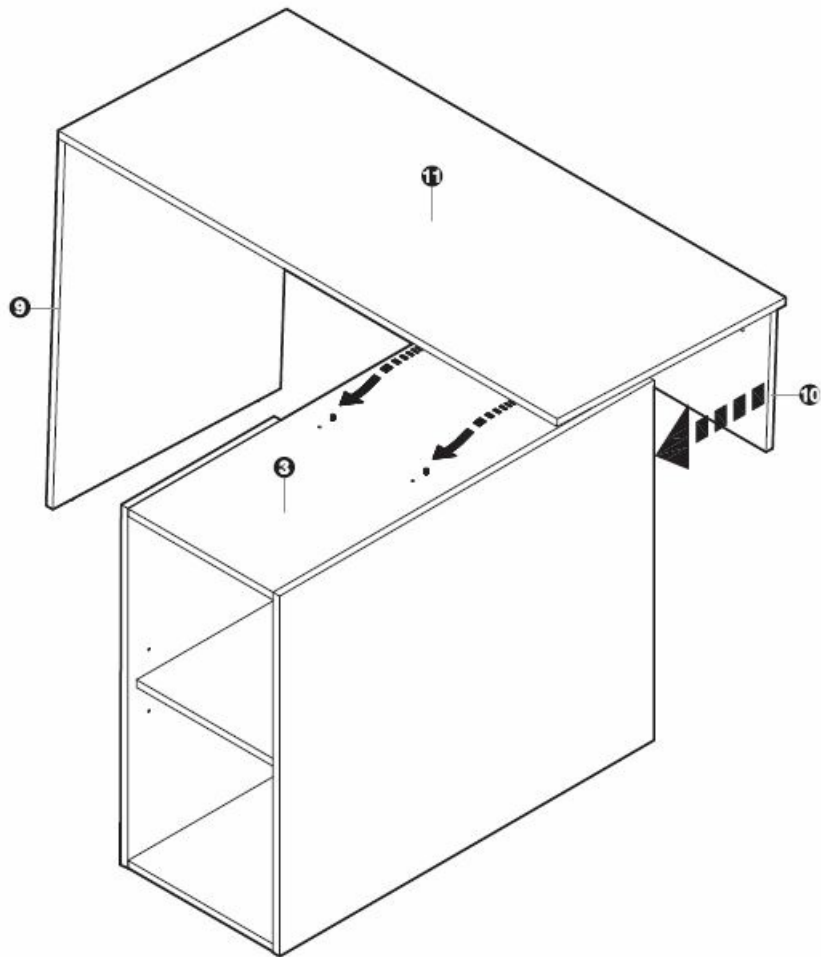


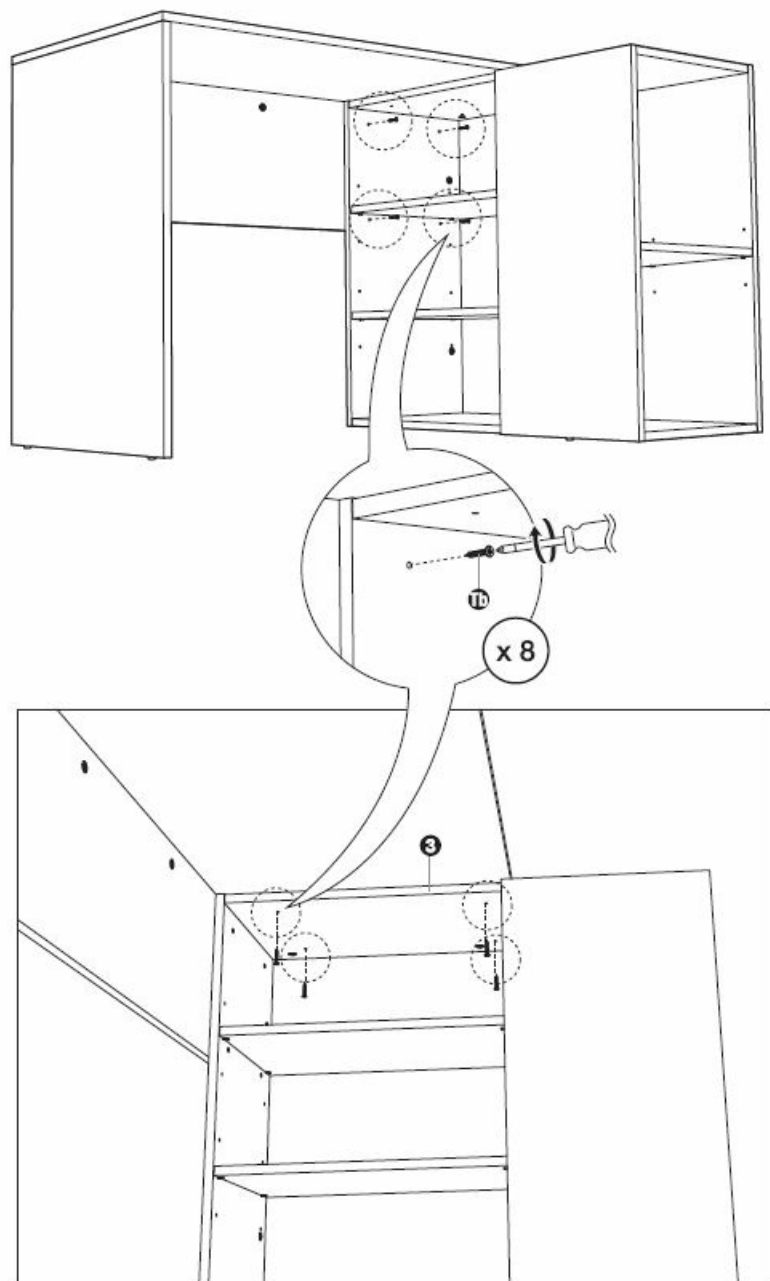
26

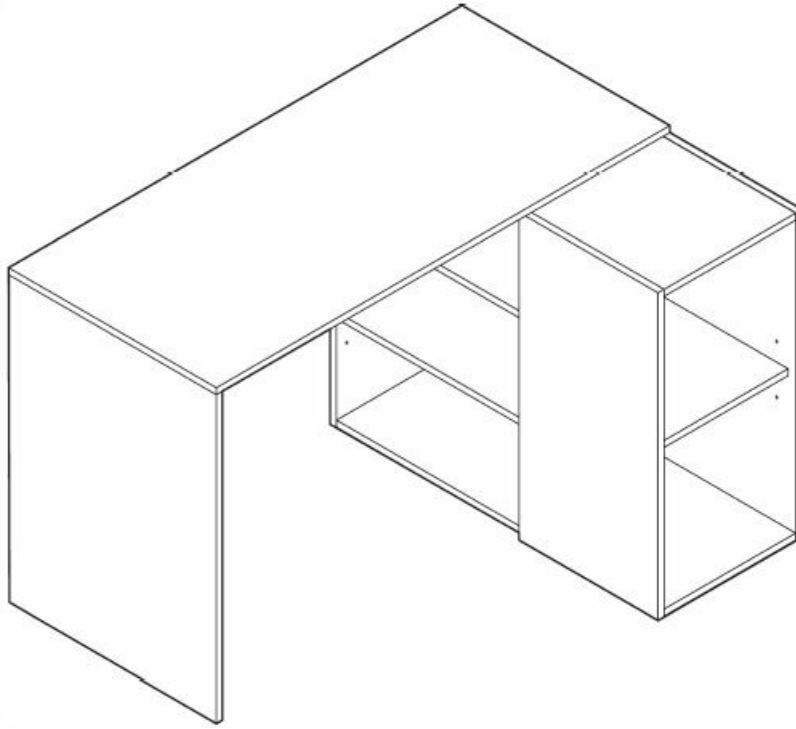


27










Re-tighten the screws after a few days.

Documents / Resources

	<p>amazon basics B09S6XNN3 Corner Desk Corner Desk [pdf] Instruction Manual B09S6XNN3 Corner Desk Corner Desk, B09S6XNN3, Corner Desk Corner Desk, Desk Corner Desk, Corner Desk, Desk</p>
---	--

References

- [User Manual](#)