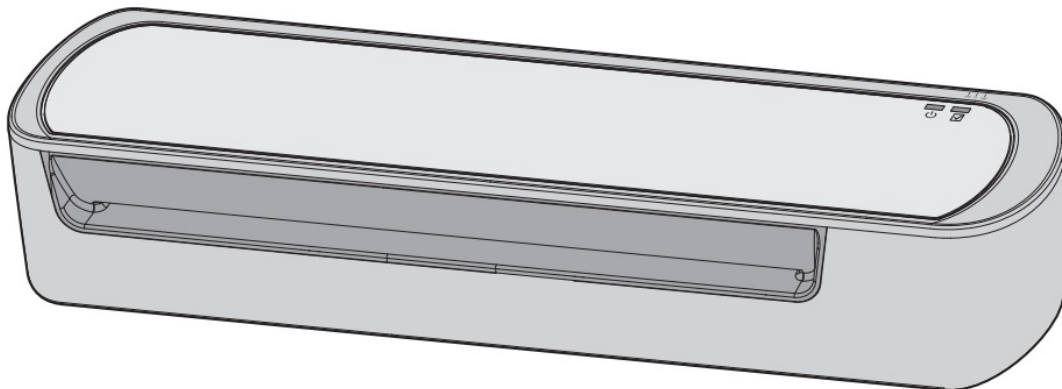




amazon basics B09RBHPLB7 Thermal Laminator Machine Instruction Manual

[Home](#) » [amazon basics](#) » amazon basics B09RBHPLB7 Thermal Laminator Machine Instruction Manual 

amazon basics B09RBHPLB7 Thermal Laminator Machine



Contents

- 1 Important Safeguards
- 2 Explanation of Symbols
- 3 Intended Use
- 4 Product Description
- 5 Before First Use
- 6 Operation
 - 6.1 Switching on/off
 - 6.2 Preparing the document
 - 6.3 Laminating
 - 6.4 Removing or realigning a pouch
 - 6.5 Tips
- 7 Cleaning and Maintenance
 - 7.1 Cleaning
 - 7.2 Storage
- 8 Troubleshooting
- 9 FCC – Supplier's Declaration of Conformity
 - 9.1 FCC Compliance Statement
 - 9.2 FCC Interference Statement
- 10 Canada IC Notice
- 11 Specifications
- 12 Feedback and Help
- 13 Documents / Resources
- 14 Related Posts

Important Safeguards



Read these instructions carefully and retain them for future use.

If this product is passed to a third party, then these instructions must be included.

When using electrical appliances, basic safety precautions should always be followed to reduce the risk of fire, electric shock, and/or injury to persons including the following:



Risk of burns!

The product gets hot during use.

- This product is not intended for use by persons (including children) with reduced physical, sensory or mental capabilities, or lack of experience and knowledge, unless they have been given supervision or instruction concerning use of the product by a person responsible for their safety.
- Children should be supervised to ensure that they do not play with the product.
- If the supply cord is damaged, it must be replaced by the manufacturer, its service agent or similarly qualified persons in order to avoid a hazard.
- This product has a polarized plug (one blade is wider than the other).
To reduce the risk of electric shock, this plug will fit outlet only one way.
If the plug does not fit fully in the outlet, reverse the plug. If it still does not fit, contact a qualified electrician. Do not modify the plug in any way.
- Protect the product from direct sunlight.

- Switch the product off after each use.
- Disconnect the product from outlet when not in use for an extended period.
- Remove staples and other metal articles on the paper prior to laminating.

Explanation of Symbols



This is a class II electrical product that does not require a safety connection to electrical earth (ground).



This product is intended for indoor use only



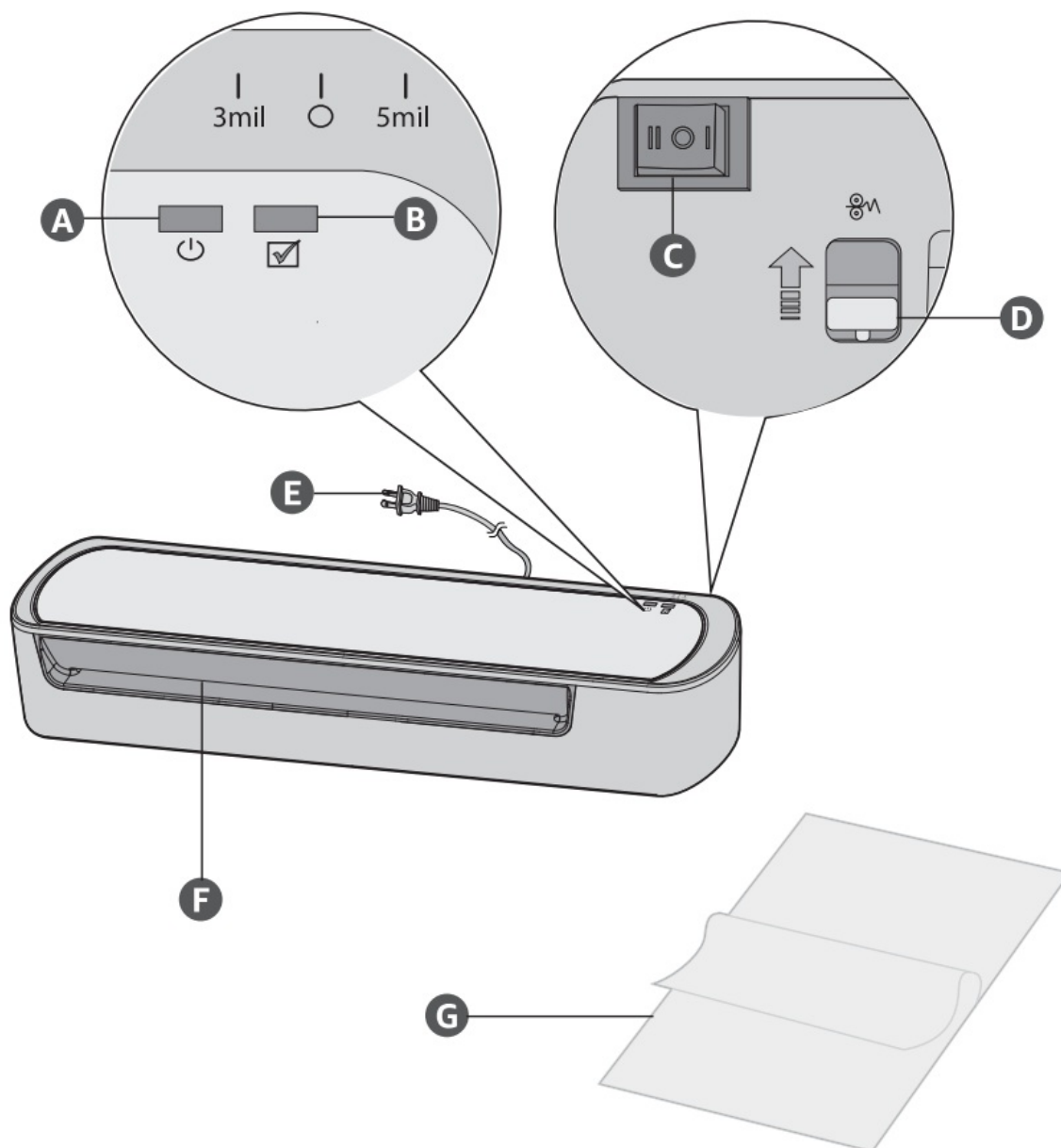
Hot surfaces.

SAVE THESE INSTRUCTIONS

Intended Use

- This product is intended for laminating documents, photos, business cards, menus, and more.
- This product is intended for household use only.
- This product is intended to be used in dry indoor areas only.
- Use the product in a well ventilated area.

Product Description



- (A) On indicator
- (B) Ready indicator
- (C) Mode/off switch
- (D) Release lever
- (E) Power cord with a plug
- (F) Entry slot
- (G) Laminating pouches

Before First Use

! DANGER

Risk of suffocation!

Keep any packaging materials away from children and pets – these materials are a potential source of danger, e.g. suffocation.

NOTICE

For B09RBHV2D1 model only: The metal guide inside of the product makes a clanging sound.
This is normal and does not indicate malfunction.

- Remove all the packing materials.

- Remove and review all components before use.
- Check the product for transport damages.
- Before connecting the product to the power supply, check that the power supply voltage and current rating corresponds with the power supply details shown on the product rating label.
- Place the product on a stable, heat resistant surface. Ensure there is a minimum 20" (50.8 cm) of unobstructed space behind the product.

Operation

Switching on/off

NOTICE

After selecting the speed mode, the on indicator (A) lights up red.
Use the mode switch (C) to switch on/off and select the speed mode. Choose from:

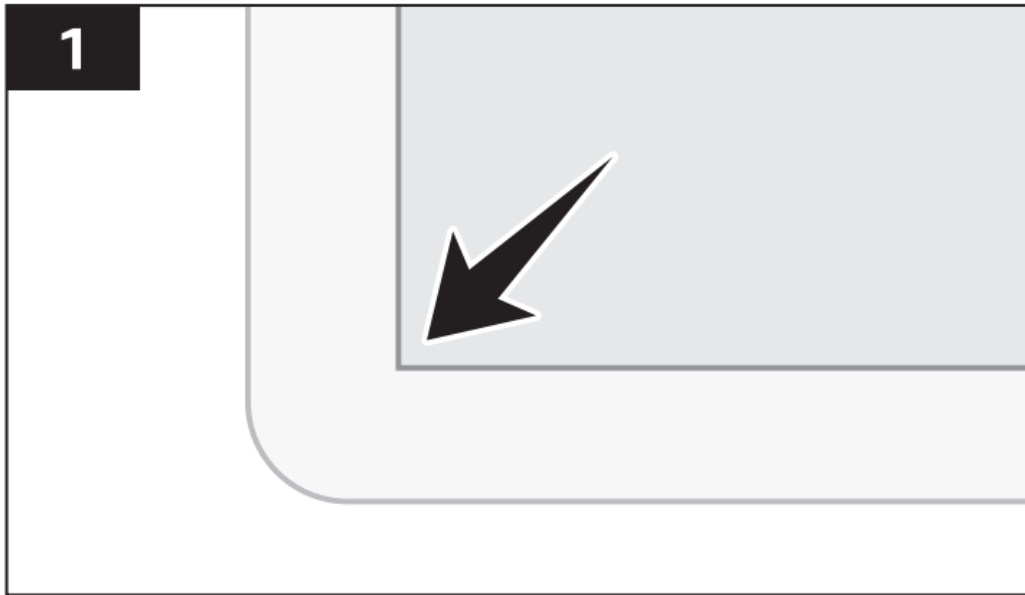
Mode switch (A) setting:	Speed mode:
0	Off
3mil	Fast speed mode (up to 3mil pouch thickness plus 50 to 200 gsm paper, e.g . printing paper, newspaper, card paper or photo paper)
5mil	Slow speed mode (up to 5mil pouch thickness plus 50 to 75 gsm paper, e.g. printing paper or newspaper)

Preparing the document

NOTICE

Choose the appropriate pouch size that is not too large for the paper to be laminated.

Place the document inside of the appropriate sized pouch (G). Ensure the document is centered and touches the sealed edge of the pouch (G) (**Fig. 1**).



Laminating



CAUTION

Risk of burns!

- The entry slot (F) gets hot during use.
- The bottom side of the pouch (G) remains hot for a few seconds after lamination. Let it cool for at least 15 seconds before touching.



CAUTION

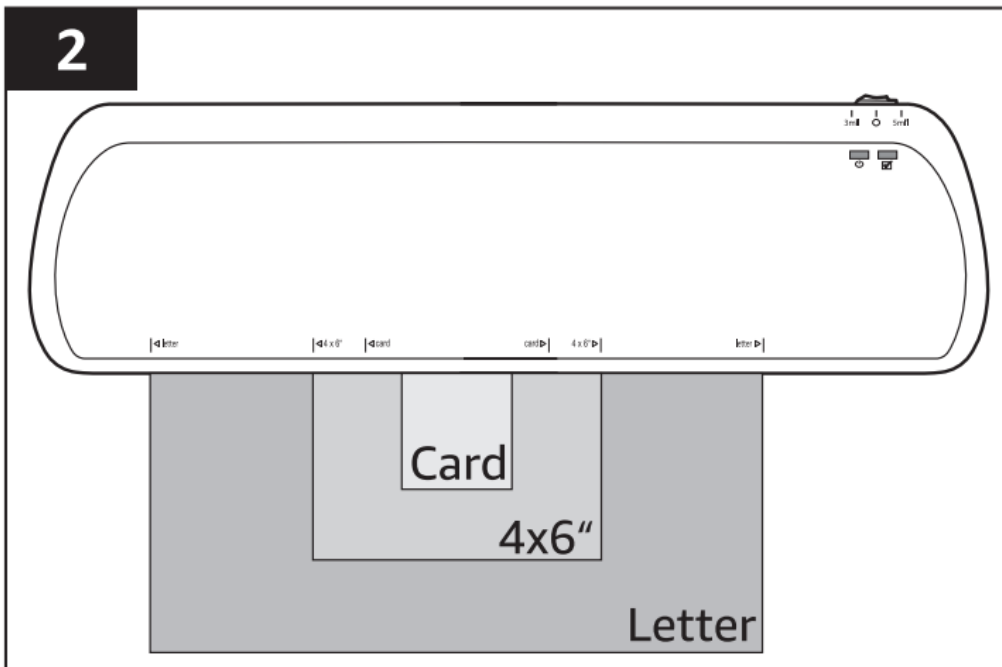
Risk of damage!

- If the pouch (G) gets stuck during operation, switch off the product.
- Pull the release lever (D) up and remove the pouch manually.
- The product is not for cold lamination. Do not use self-adhesive pouches with the product.
- If the product stays in standby mode for a long time, the first few pouches may come out wrinkled.
- Do not laminate an empty pouch.

NOTICE

- The product may emit a slight burning smell during heat up and plastic smell during the laminating process.
- It takes approx. 3-5 minutes for the product to heat up. When the ready indicator (B) lights up green, the product is ready to use.

2

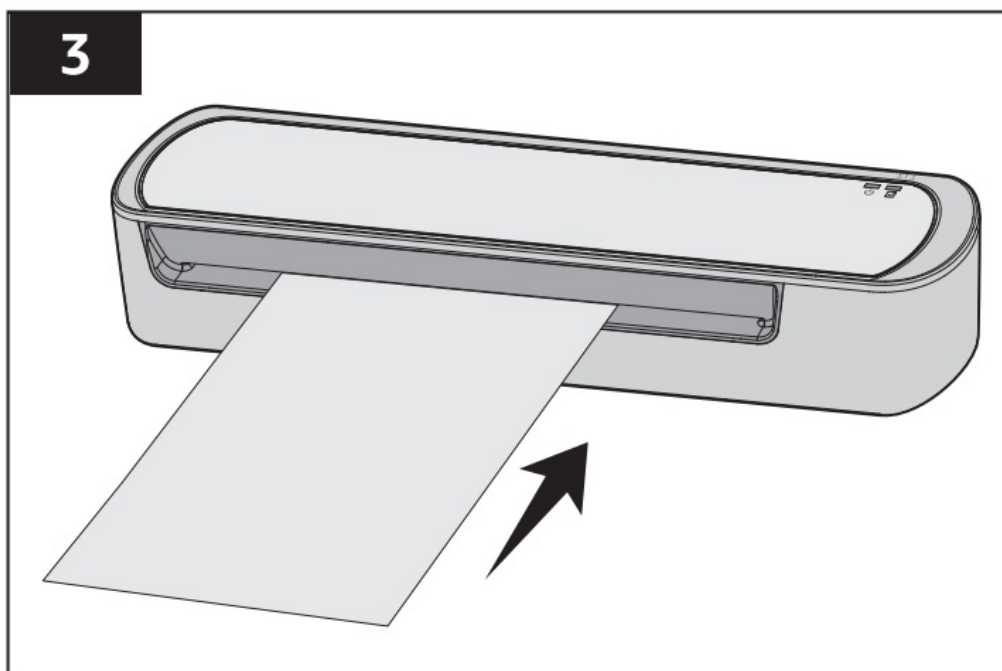


1. Insert the sealed edge of the pouch (G) into the entry slot (F). Keep the pouch (G) straight and centered to the entry slot (F) **(Fig. 3)**.
2. Once the edge is fed into the slot, the product automatically pulls in the pouch (G) **(Fig. 3)**.
3. After lamination, place the pouch (G) on a flat, heat resistant surface to cool.

Removing or realigning a pouch

1. Pull the release lever (D) up.
2. Remove/realign the pouch manually.

3



Tips

- Always test laminate with a similar size and thickness before final process.

- Different pouch thickness, have different temperature settings. When laminating various pouches at one time, it is recommended to first start with the thinnest pouch.

Cleaning and Maintenance



- To prevent electric shock, unplug the product before cleaning.
- During cleaning do not immerse the product in water or other liquids.
- Never hold the product under running water.

Cleaning

- To clean the product, wipe with a soft, slightly moist cloth.
- Wipe the product dry after cleaning.
- Never use corrosive detergents, wire brushes, abrasive scourers, metal or sharp utensils to clean the product.

Storage

Store the product in its original packaging in a dry area. Keep away from children and pets.

Troubleshooting

Problem	Solution
The product does not switch on.	Check if the plug is connected to the outlet. Use voltage tester to verify if the outlet is powered.
Pouch (G) does not completely seal the document.	Ensure the pouch thickness and speed setting is correct (thickness up to 5mil)
Pouch (G) has waves or bubbles	<ul style="list-style-type: none"> • Ensure the document thickness and speed setting is correct (thickness up to 5mil). • Ensure the pouch is straight and centered to the entry slot (F). • Ensure to insert the pouch (G) into the entry slot (F) with the sealed edge first.
Pouch (G) is damaged after operation.	Run the product with a cleaning sheet (not included) to test and clean.

FCC – Supplier's Declaration of Conformity

Unique Identifier	B09RBHPLB7, B09RBHV2D1 – Thermal Laminator Machine
Responsible Party	Amazon.com Services LLC.
U.S. Contact Information	410 Terry Ave N. Seattle, U.S. Contact Information WA 98109, United States
Telephone Number	(206) 266-1000

FCC Compliance Statement

1. This device complies with Part 15 of the FCC Rules. Operation is subject to the following two conditions:
 - (1) this device may not cause harmful interference, and
 - (2) this device must accept any interference received, including interference that may cause undesired operation.
2. Changes or modifications not expressly approved by the party responsible for compliance could void the user's authority to operate the equipment.

FCC Interference Statement

This equipment has been tested and found to comply with the limits for a Class B digital device, pursuant to part 15 of the FCC Rules. These limits are designed to provide reasonable protection against harmful interference in a residential installation. This equipment generates, uses and can radiate radio frequency energy and, if not installed and used in accordance with the instructions, may cause harmful interference to radio communications. However, there is no guarantee that interference will not occur in a particular installation. If this equipment does cause harmful interference to radio or television reception, which can be determined by turning the equipment off and on, the user is encouraged to try to correct the interference by one or more of the following measures:

- Reorient or relocate the receiving antenna.
- Increase the separation between the equipment and receiver.
- Connect the equipment into an outlet on a circuit different from that to which the receiver is connected.
- Consult the dealer or an experienced radio/ TV technician for help.

Canada IC Notice

This Class B digital apparatus complies with Canadian CAN ICES-003(B)/NMB-003(B) standard.

Specifications

Model:	B09RBHPLB7	B09RBHV2D1
Model number:	VL203	VL303
Rated voltage:	120 V AC, 60 Hz	120 V AC, 60 Hz2.8A
Rated current:	1.8 A	2.8A
Net weight:	approx. 2.47 lbs (1.12 kg)	approx. 3.13 lbs (1.42 kg)
Dimensions (W x H x D):	approx. 13.9 x 2.6 x 4.4" (35.4 x 6.7 x 11.2 cm)	approx. 17.9 x 2.6 x 4.4" (45.4 x 6.7 x 11.2 cm)

Feedback and Help

We would love to hear your feedback. To ensure we are providing the best customer experience possible, please consider writing a customer review.

Scan QR Code below with your phone camera or QR reader:



If you need help with your Amazon Basics product, please use the website or number below.

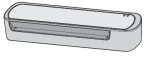
 amazon.com/gp/help/customer/contact-us

 +1 877-485-0385

amazon basics

Documents / Resources

amazon basics



Thermal Laminator Machine
Instruction & Manual for B09RBHPLB7
B09RBHPLB7, B09RBHPLB7
Page 1 of 1

[amazon basics B09RBHPLB7 Thermal Laminator Machine](#) [pdf] Instruction Manual
B09RBHPLB7, B09RBHPLB7 Thermal Laminator Machine, The
rmal Laminator Machine, Laminator Machine