



## amazon basics B09Q9679P1 3 In 1 A4 Thermal Laminator Instruction Manual

[Home](#) » [amazon basics](#) » amazon basics B09Q9679P1 3 In 1 A4 Thermal Laminator Instruction Manual 

### Contents

- [1 amazon basics B09Q9679P1 3 In 1 A4 Thermal Laminator](#)
- [2 IMPORTANT SAFETY INSTRUCTIONS](#)
- [3 Icons Explanation](#)
- [4 Product Description](#)
- [5 Before First Use](#)
- [6 Use](#)
- [7 Cleaning and Maintenance](#)
- [8 Frequently Asked Questions](#)
- [9 Specifications](#)
- [10 Documents / Resources](#)
  - [10.1 References](#)
- [11 Related Posts](#)



amazon basics B09Q9679P1 3 In 1 A4 Thermal Laminator



## IMPORTANT SAFETY INSTRUCTIONS



Read these instructions carefully and retain them for future use. If this product is passed to a third party, then these instructions must be included.

- When using electrical appliances, basic safety precautions should always be followed to reduce the risk of fire, electric shock, and/or injury to persons including the following
- No naked flame sources, such as lighted
- candles, should be placed on the product.
- The ventilation should not be impeded by covering the ventilation openings with items, such as newspapers, table-cloths, curtains etc.
- The product shall not be exposed to dripping or splashing water. No objects filled with liquids, such as vases, shall be placed on the product.
- Avoid touching the media feed opening with the hands.
- Avoid clothing, hair touching the media feed opening.
- This product is not intended for use by children.
- Unplug this product when not in use. Do not cover ventilation openings.
- The socket should be near the device and easily accessible.

## Icons Explanation




- This symbol stands for “Conformity Europeans”, which means “Conformity with EU-directives”. With the CE marking the manufacturer confirms that this product complies with applicable European directives and regulations.



- This product is classified as protection class II. This means the product is equipped with reinforced

or double insulation between the mains supply circuit and the output voltage or the casing. Therefore it does not require a safety connection to an electrical earth (ground).

-  Alternating current (AC).



- Safety alert! Potential personal injury hazards. Follow all safety messages that follow this symbol to avoid injury.



- Moving parts



- CAUTION! Hot surface.



- Do not touch.

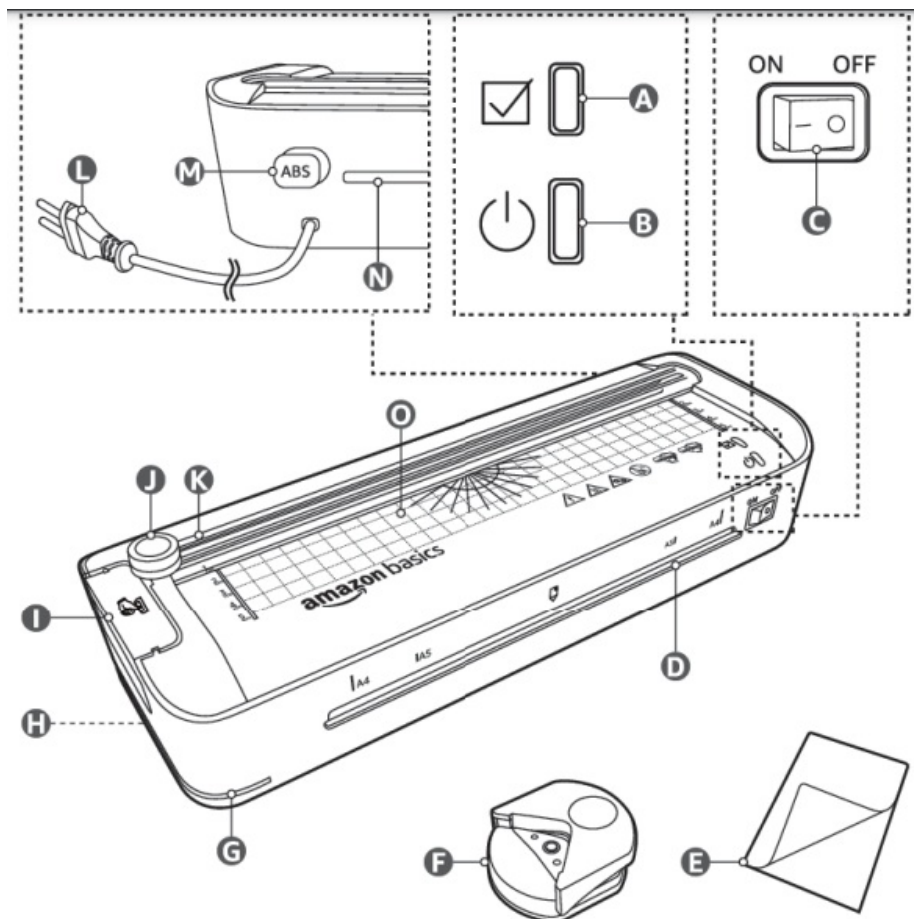


- Do not place the laminating pouch in the laminating slot open end first.



- Do not place the laminating pouch in the laminating slot at an angle.

## Product Description



- A Ready indicator
- B On/off indicator
- C ON / OFF switch
- D Laminator pouch entrance
- E Laminator pouch x10
- F Corner trimmer
- G Document slot for punching
- H Puncher cover
- I Puncher button
- J Trimmer knob
- K Guide rail
- L Power plug with cord 0 Anti-block slider C, Laminator pouch exit
- M Template guide

### Intended Use

- This product is intended for punching holes/corners, slicing and laminating paper.
- This product is intended for household use only.
- This product is intended to be used in dry indoor areas only.

### Before First Use

### WARNING

- **Risk of suffocation!**

Keep any packaging materials away from children and pets – these materials are a potential source of danger, e.g. suffocation.

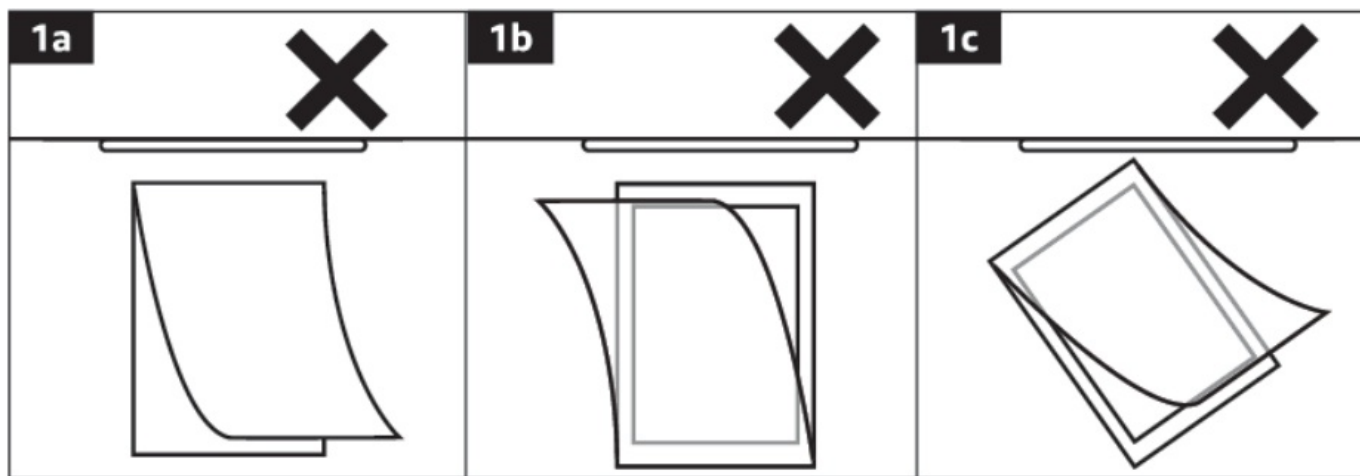
- Remove all the packing materials.
- Remove and review all components before use.
- Check the product for transport damages.
- Before connecting the product to the power supply, check that the power supply voltage and current rating corresponds with the power supply details shown on the product rating label.

## Use

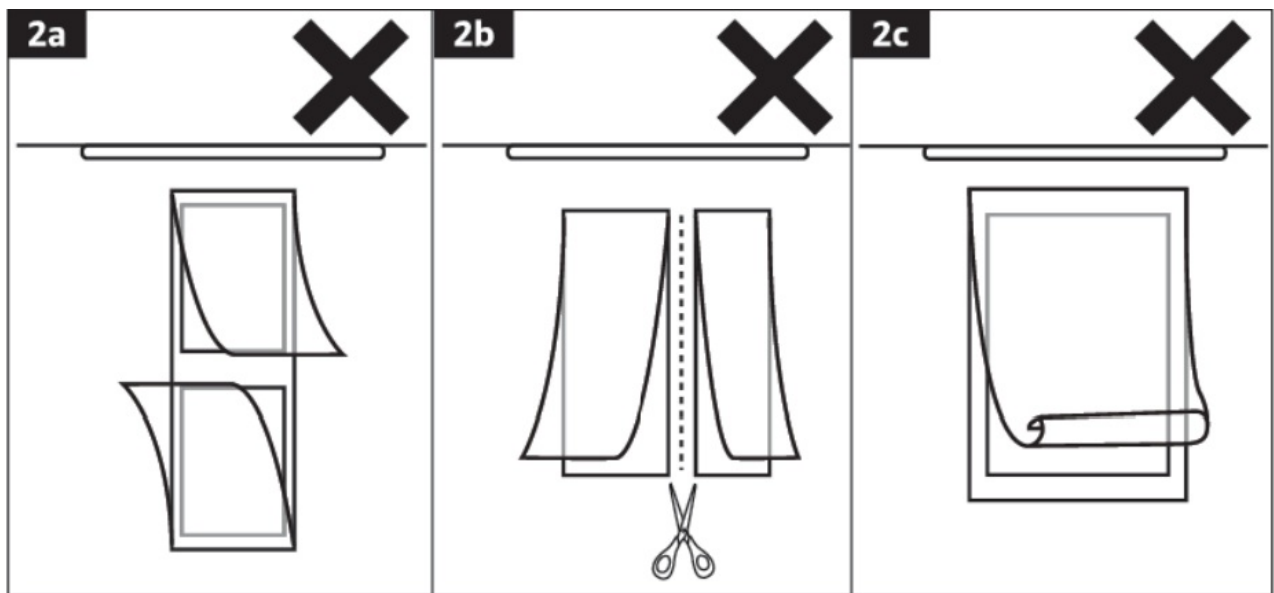
### Laminating

- **Laminating tips**

- Always feed laminator pouches from the front closed end first.
- The size of the material being laminated should be smaller than the laminator pouch (21.5 x 30.4 cm).
- Align the laminator pouch to the markers on the laminator pouch entrance (D). I) Do not laminate empty laminator pouches (Fig. 1a).
- Do not laminate the laminator pouches open end first (Fig. 1 b).
- Do not place the laminator pouch in the product crooked or at an angle (Fig. 1c).



- It is not recommended to place multiple smaller documents in one large pouch. This may cause poor laminating results and jams.
- Do not laminate thermal paper.
- Do not laminate cold seal pouches.
- Do not laminate staples or paper clips.
- Do not connect the laminator pouches (Fig. 2a).
- Do not cut open or trim the laminator pouches (Fig. 2b). This may expose the rollers in the product to glue and cause jams.
- Do not use laminator pouches that are deformed (Fig. 2c).

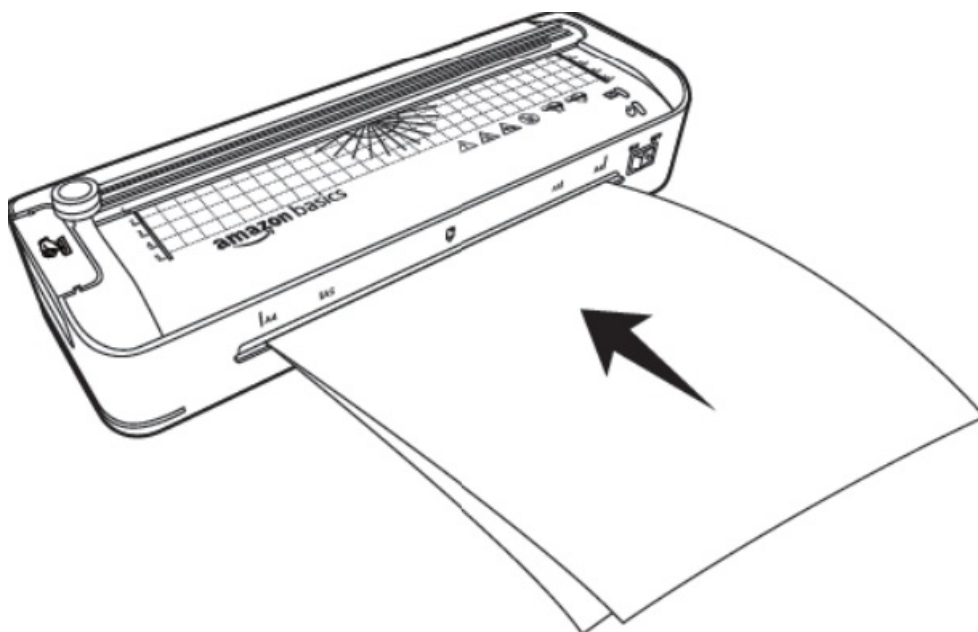


## Laminating process

### NOTICE

- The product may emit a slight smell when it is first used. This is entirely safe and harmless. Ensure there is adequate ventilation in the room.
- The dimension of the A4 pouch leaves no error for positioning the document. The edges of the document must be correctly aligned at all sides within the pouch.

1. Place the product on a stable, level surface.
2. Connect the power plug (L) to a suitable socket-outlet.
3. Set the ON / OFF switch (C) to ON. The on/off indicator lights up red. The product is preheating. Preheating takes 3 minutes.
4. The product is ready for lamination when the ready indicator (A) lights up green.
5. Insert the document into a laminator pouch (E). Leave approximately 3-5 mm on all sides of the laminator pouch (E).
6. Starting from the front closed end first, insert the laminator pouch (E) evenly into the laminator pouch entrance (D) (Fig. 3).



7. Let go of the laminator pouch (E) and let it pass through to the laminator pouch exit (N).
8. Take out the finished lamination and let it cool completely.
9. After use, set the ON / OFF switch (C) to OFF then unplug the product from the power source. Let the product cool completely before storing.

### Clearing document jam

If one of the following situations is happening, the product might be jammed

- Document fails to exit.
- Abnormal noises are heard during operation.
- The document has become wrinkled on its way through the product.

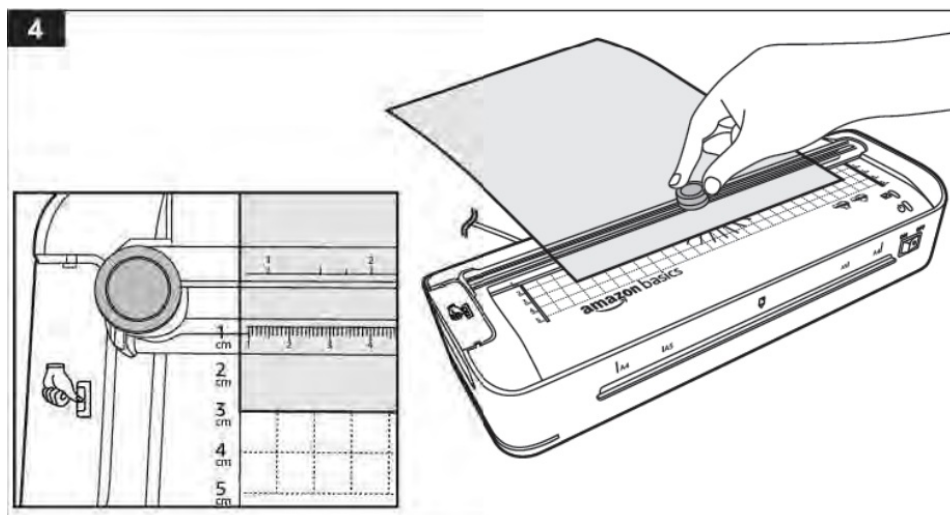
1. To clear a jam, set the ON / OFF switch (C) to OFF.
2. Press and hold the anti-block slider (M) to release the jam.
3. Pull out the jammed document.

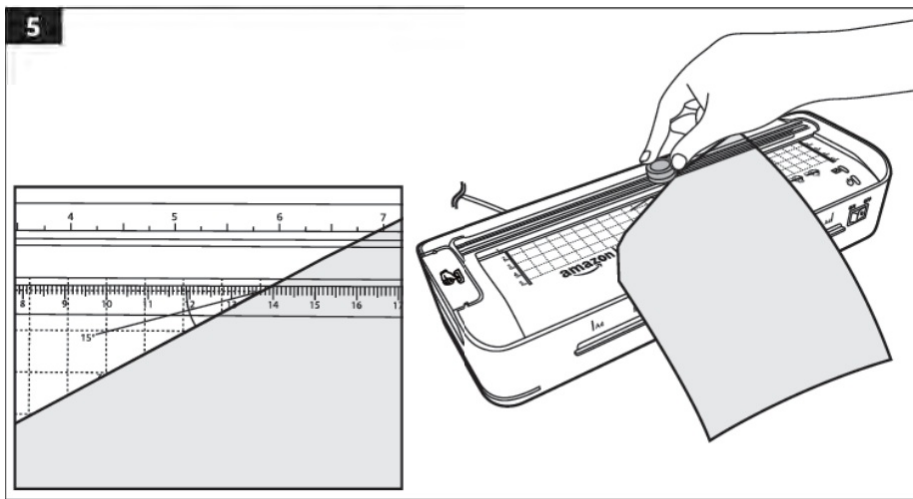
### Trimming

#### NOTICE

- This function can be used without connecting the product to power.
- The trimmer can be used to cut paper, thin cards and photo paper. It can produce straight cuts.
- When cutting documents, the template guide (O) guides the paper for accurate placement and measurements. The protractor on the template guide (O) is used when the cutting on the paper is at specific angles.
- The maximum thickness of the paper, thin cards or photo paper that can be cut is 0.3 mm.

1. Place the product on a stable, level surface.
2. Slide the trimmer knob (J) to one side of the guide rail (K).
3. Slide the material to be cut under the guide rail (K) and position it as desired.
4. Hold the material firmly with one hand to make sure it does not slip around while cutting.
5. Make the cut by pressing the trimmer knob (J) down and sliding it along the guide rail (K) to the other side (Fig. 4 and 5).



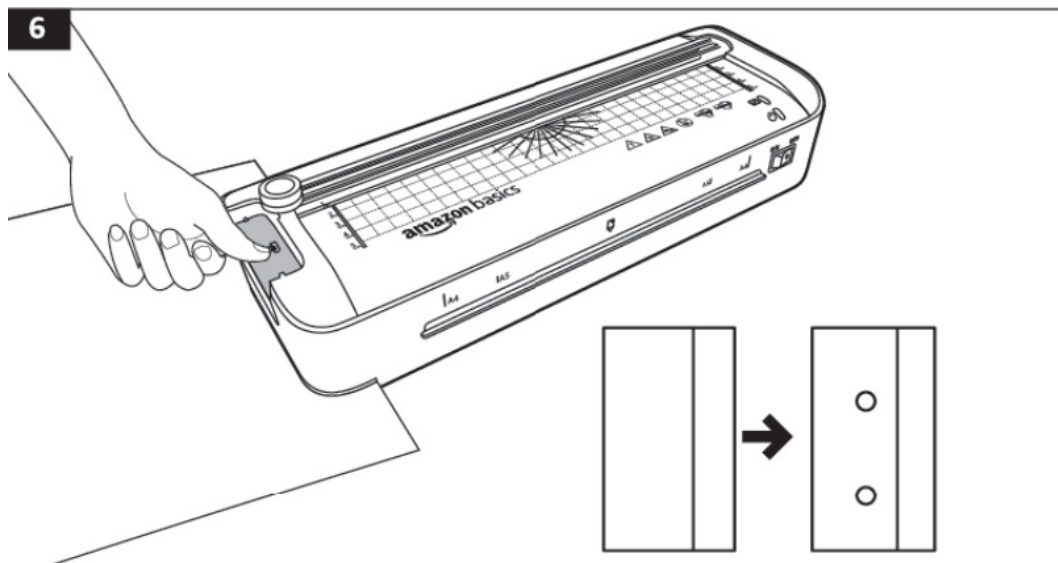


## Punching holes

### NOTICE

This function can be used without connecting the product to power. The maximum thickness of the paper or card that can be punched is 0.35 mm.

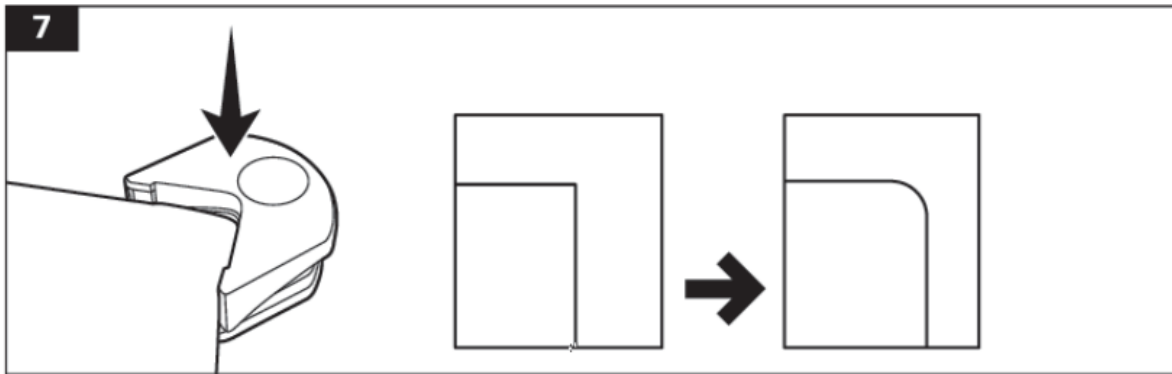
1. Place the product on a stable, level surface.
2. Slide the material into the document slot (G).
3. Punch the holes by pressing down the puncher button (I) (Fig. 6).



## Punching round corners

- The corner trimmer (F) can be used to trim off sharp paper corners into rounded corners for a more finished look.
- The maximum thickness of the paper or card that can be punched is 0.35 mm.

1. Place the product on a stable, level surface.
2. Slide a corner of the material into the corner trimmer (F).
3. Punch out a round corner by pressing down on the corner trimmer (F) (Fig. 7).



## Cleaning and Maintenance

**WARNING** Risk of electric shock!

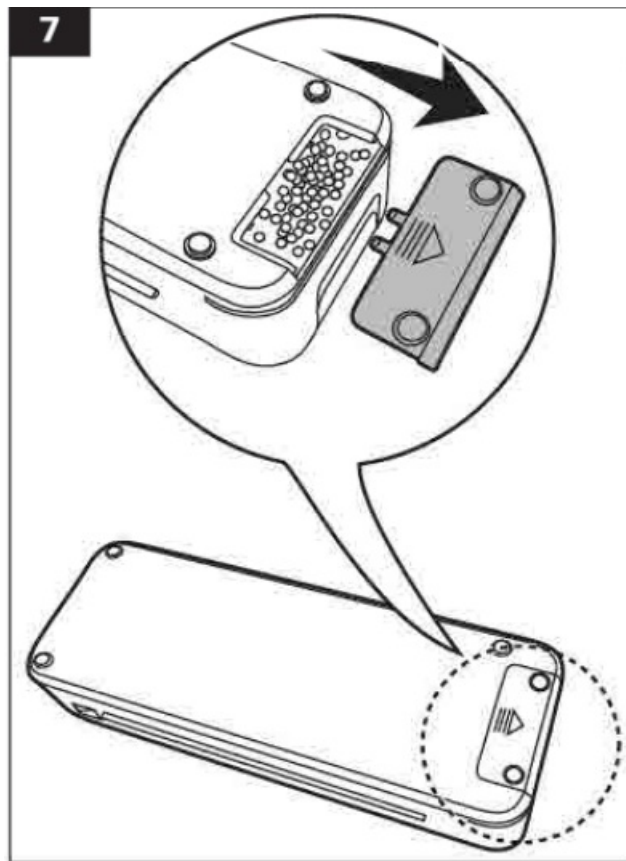
- To prevent electric shock, unplug the product before dealing,
- During cleaning do not immerse the product in water or other liquids. Never hold the product under running water.

### Cleaning the housing

- To clean the product, wipe with a soft, slightly damp cloth.
- Wipe the product dry after cleaning.
- Never use corrosive detergents, wire brushes, abrasive scourers, metal or sharp utensils to clean the product.

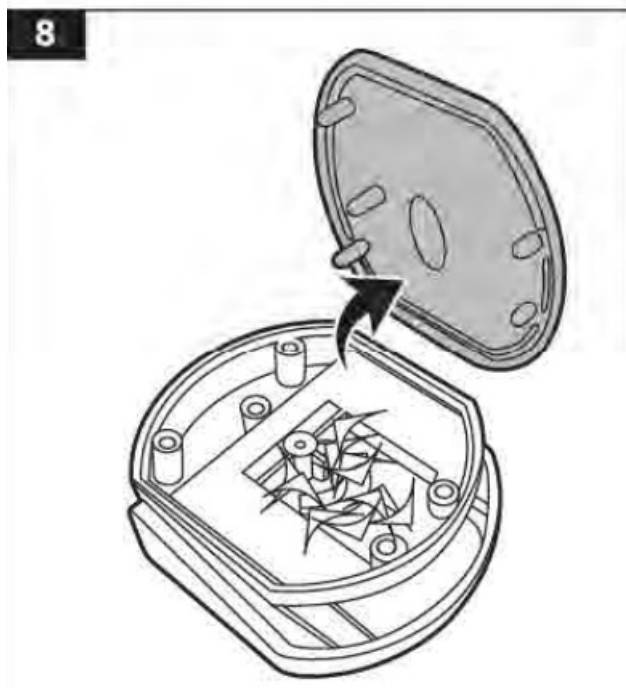
### Clearing out the waste paper Puncher

1. Invert the product.
2. Slide off the puncher cover (H) (Fig. 7).
3. Dispose of the waste paper inside the compartment.
4. Place the puncher cover (H) back on the product.



### Corner trimmer

1. Invert the corner trimmer (F).
2. Take off the bottom cover of the corner trimmer (F) (Fig. 8).
3. Dispose of the waste paper inside the compartment.
4. Place the bottom cover of the corner trimmer (F) back on the product.



### Storage

- Store the product in its original packaging in a dry area. Keep away from children and pets,

## Maintenance

- Any other servicing than mentioned in this manual should be performed by a professional repair centre.

## Frequently Asked Questions

Problem	Solution
The product does not switch on.	Check if the plug is connected to the socket outlet. Use voltage tester to verify if the socket outlet is powered.
Document jams.	<ul style="list-style-type: none"><li>▶ Check that the laminator pouch is suitable for the product.</li><li>▶ Check that the document is inserted evenly into the product.</li><li>▶ To clear the jam, follow chapter 6.1.3 Clearing document jam.</li></ul>
The lamination is foggy/ misty.	Pass the laminated document through the product again may help improve visibility.

## Disposal



The Waste Electrical and Electronic A Equipment (WEEE) Directive aims to – minimize the impact of electrical and electronic goods on the environment, by increasing re -use and recycling and by reducing the amount of WEEE going to landfill. The symbol on this product or its packaging signifies that this product must be disposed separately from ordinary household wastes at its end of life. Be aware that this is your responsibility to dispose of electronic equipment at recycling centers in order to conserve natural resources. Each country should have its collection centers for electrical and electronic equipment recycling. For information about your recycling drop off area, please contact your related electrical and electronic equipment waste management authority, your local city office, or your household waste disposal service

## Specifications



