




amazon basics B09MW35J5R External Blu Ray Drive Instruction Manual

[Home](#) » [amazon basics](#) » amazon basics B09MW35J5R External Blu Ray Drive Instruction Manual 

amazon basics B09MW35J5R External Blu Ray Drive Instruction Manual



Searching for keywords



When working on a computer, to find a topic, search for keywords such as “eject” or “write”. In PDF viewer, press CTRL on Windows® or Command on Mac to start searching.

Searching for a chapter

Read the Table of Contents below and tap/click on the desired chapter to jump to that chapter.

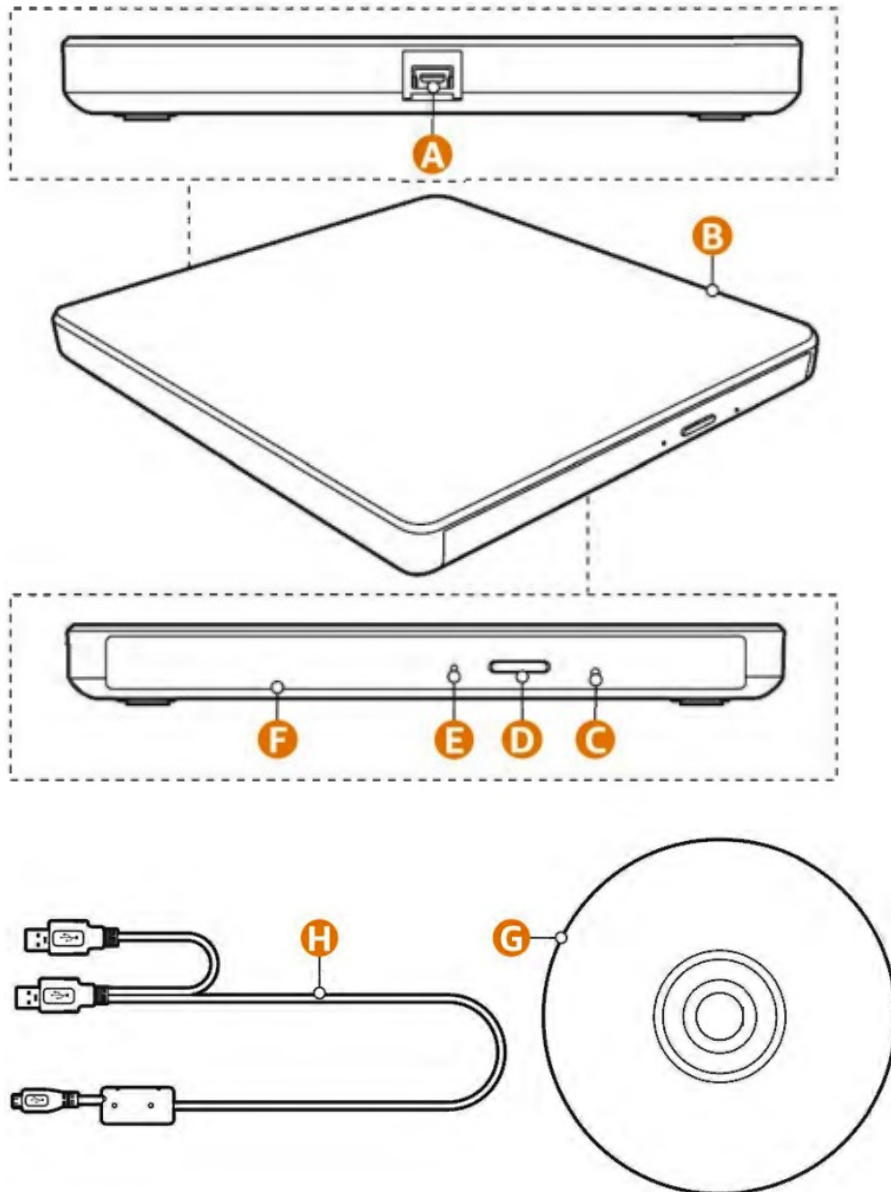
Printing this user manual

This user manual supports high resolution printing.

Contents

- [1 Product Description](#)
- [2 Hardware requirements](#)
- [3 Inserting a disc](#)
- [4 Listening to music](#)
- [5 Cleaning and Maintenance](#)
- [6 Documents / Resources](#)
 - [6.1 References](#)
- [7 Related Posts](#)

Product Description



- **A** Micro USB port (USB 2.0)
- **B** Main unit
- **C** Emergency eject button
- **D** Open compartment button
- **E** Indicator
- **F** Disc compartment (for 3"/8 cm and 4.7"/12 cm discs)
- **G** Software disc/

- **H** user manual disc USB-A power/data cable

Before First Use

DANGER Risk of suffocation!

Keep any packaging materials away from children and pets – these materials are a potential source of danger, e.g. suffocation

- Remove all the packing materials.
- Remove and review all components before use.
- Check the product for transport damages.

Intended Use

- This product is intended for reading Ultra High Definition Blu-ray (UHD BD) discs and reading and writing, Blu-ray (BD), DVD and CD discs.
- This product can be also connected to a TV using ODD mode (optical disc drive) and can be used to view/playback content directly on TV without using any additional software.
- This product is intended for private use only. This product is intended to be used in dry indoor areas only.
- This product is intended to be used in dry indoor areas only.

Operation

DISCLAIMER It is the sole responsibility of the user for direct or indirect damages (including data loss) caused by the use of this product or its malfunction. Backup all impor data as protection against data loss.

WARNING

Only drives bearing the logo “Compact Disc Rewriteable Ultra Speed” can write or erase “Ultra Speed CD-RW” media. “Ultra Speed CD-RW” media may be recognized by the same “Compact Disc Rewritable Ultra Speed” logo on the disc label or packaging material. Attempting to write to “Ultra Speed CD-RW” media using CD-RW drives not bearing the logo “Compact Disc Rewriteable Ultra Speed” may result in data loss. “DVD+R Double Layer” media may have compatibility problem with other drives.

Hardware requirements

In order for the product to operate as intended, the following hardware requirements (or higher) are needed:

UHD Blu-ray HDR Playback

O/S:

Windows 10 (64-bit with 2015 Nov. updates) Intel 7th generation (Kaby Lake) Core i processors and above that support

GPU:

the Intel Software Guard Extensions (Intel SGX) technology GPU Intel 7th generation (Kaby Lake) Core i processors integrated with Intel HD Graphics 630, Intel Iris™ Graphics 640

GPU:

Graphics 630, Intel Iris™ Graphics 640 RAM 6 GB or higher

Motherboard:

Asus Prime Z270-A (4K but no HDR support), Asus Z270-WS, ASRock Fatal1ty Z270 Gaming-ITX/ac, ASRock Fatal1ty Z370 Gaming-ITX/ac, Gigabyte GA- Z270X-Gaming 8, Gigabyte GA-Z270X-Gaming 9, Gigabyte Z370

Blu-ray, DVD and CD

O/S : Windows 10 or higher, macOS 10.15 or higher

CPU: 1 GHz or faster processor or SoC RAM 4

RAM: 4 GB or higher Interface

Interface: USB 2.0 (3.0 Compatible) NOTICE

NOTICE

- Performance of the product cannot be guaranteed for configurations that do not meet the above requirements.
- The USB 2.0 port is backward compatible with USB 1.1. However due to USB 1.1 slower transfer rates, the picture and sound might be disrupted while watching a DVD or Blu-ray movie.
- Operation through a USB hub cannot be guaranteed.

Drivers

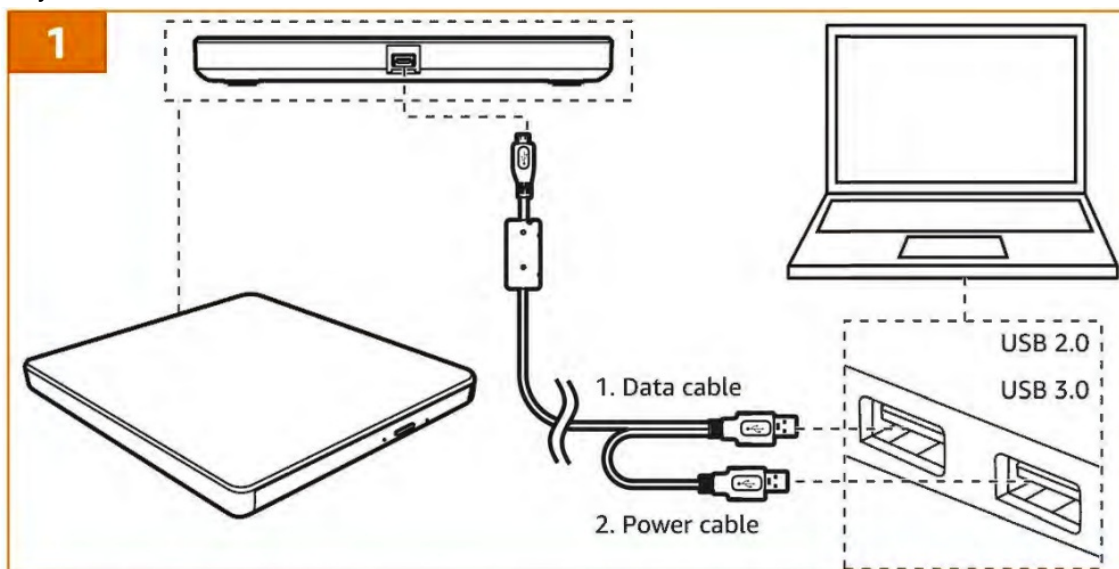
Under Windows 10, 8, 7, Vista and Mac OS X a separate driver is not required. The drivers will be installed automatically by the operating system after plugging in.

4K UHD Player Playback

4K UHD Player playback is only available on some systems. More information is available on following Cyberlink sites:

- <https://www.cyberlink.com/support/faq-content.do?id=19881>
- <https://www.cyberlink.com/support/faq-content.do?id=19860>

NOTICE Do not install the product in an inclined position. It is designed to be operated in a horizontal position only.



1. Connect a USB-A plug of the USB-A power/data cable (H) to a USB 2.0 or 3.0 port on a compute or laptop (Fig. 1).

NOTICE In case of computers/laptops, a single USB port might not supply enough power to operate the

product. If this happens, connect both USB-A plugs (1 and 2) of the USB-A power/data cable (H).

2. Connect the micro USB plug of the USB-A power/data cable (H) to the micro USB port (USB 2.0) (A) (Fig. 1).
The indicator (E) flashes green once.

NOTICE The product does not show up as a drive on the computer until a disc is inserted, then the disc acts as a drive.

Disconnecting from the power source

1. Close the software being used.
2. On the computer, eject the product drive:

Windows® Eject Path

Press Windows + E on the keyboard to open File Explorer. Right-click on the optical drive and select “Eject” from the pop-up menu.

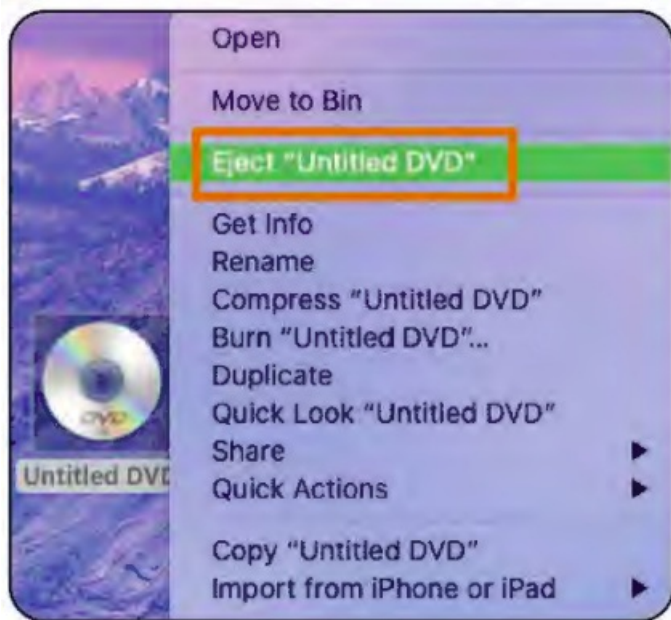


Mac® Eject Path

Method 1: Right-click on the disc icon on the desktop and select “Eject” from the pop-up menu.

Method 2: Press Command + Shift + C on the keyboard to open “Computer” folder. Right-click on the disc icon and select “Eject” from the pop-up menu.

Method 3: Drag the disc icon on the desktop to “Bin”.



3. After the product drive is successfully ejected, disconnect the USB-A power/data cable (H) from the computer and the main unit (B).

Inserting a disc

CAUTION

The disc rotates at high speed in the drive unit. Use of worn, damaged, or non-standard discs can adversely affect the drive and cause the disc to shatter or crush while in use. Disc crush can only occur when damaged disk is used. It is an extremely rare occurrence, but there are steps which can be taken to prevent it.

- Always check discs before placing them onto the disc compartment.
- Take care not to use worn, cracked, damaged, warped or poor quality discs.
- Check the center of the disc, cracks here are the main cause of disc crush.
- Do not play discs which are a non-standard (non-circular) shape, such as heart shaped discs, or discs in the shape of a business card.

To prevent the discs from being damaged:

- When not in use, remove discs from the drive
- Keep discs in the packaging supplied with them and out of direct sunlight and away from heat sources.
- Excessive vibration or a sudden jolt to the drive during operation may cause a malfunction. Avoid exposing the drive to sudden changes in temperature as it may cause condensation to collect inside the drive.

NOTICE The disc compartment (F) only fits 3" (8 cm) and 4.7" (12 cm) discs.

1. Press the open compartment button (D). The disc compartment (F) opens.
2. Place the disc in the center of the compartment with the label side facing up.
3. Push the disc compartment (F) until it clicks into place. The indicator (E) flashes green as drive reads the inserted disc.

Ejecting a disc

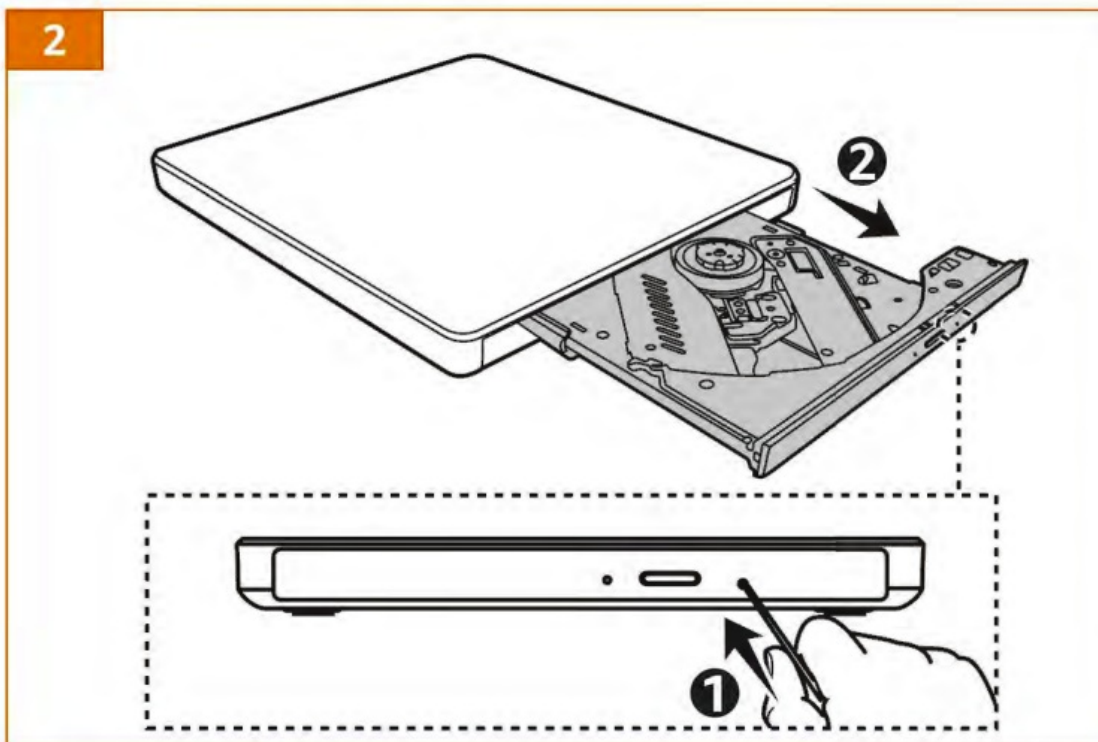
1. Stop the playback of the content of the disc.
2. Press the open compartment button (D). The disc compartment (F) opens.
3. Take out the disc.
4. Push the disc compartment (F) until it clicks into place. The indicator (E) flashes green once.

Performing an emergency eject

NOTICE Use this method only in emergency situations. Using this method excessively may cause the product to malfunction.

In case of drive failure or a power outage causing a disc to be stuck, do the following:

1. Disconnect the product from power.
2. Insert a fine-tipped object (e.g. a straightened paper clip) into the emergency eject hole (C) (Fig. 2). The disc compartment (F) opens.



Installing software (Windows® only)

NOTICE The provided software is for Windows® only. Mac® software has to be installed or purchased separately.

The product comes with a disc (G) containing audio/video playback, video/image editing and disc writing software. After connecting the product to power, insert the disc (G) then follow the on- screen instructions to install the desired software.

The disc (G) also contains a copy of this user manual and a Quick Start Guide.

Burning a disc

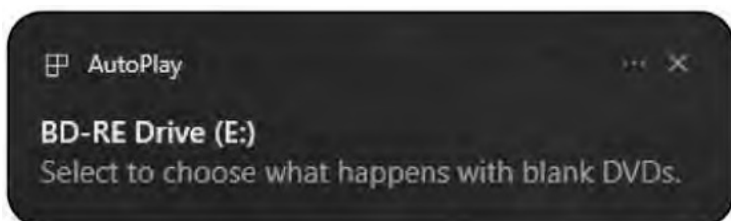
NOTICE

- DVD/Blu-ray movie titles cannot be recorded because of the copyright protection.
- To achieve maximum record and burn speed, copy the contents to the computer's hard drive first instead of directly writing from another source disc or external drive.

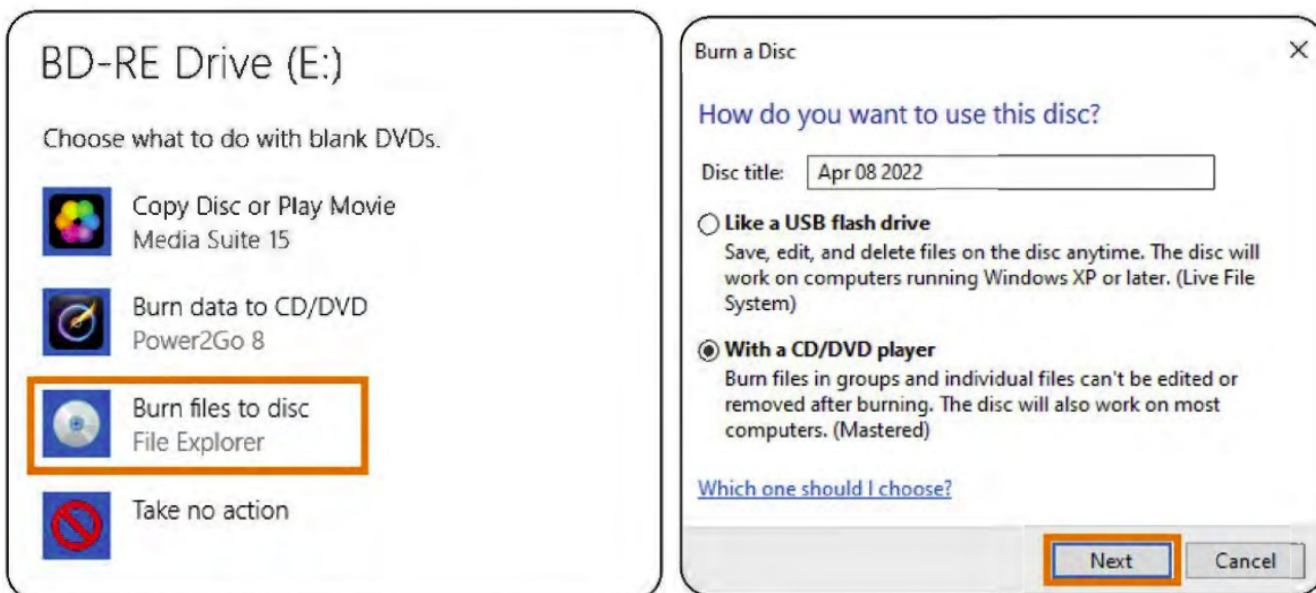
Windows®

NOTICE The screenshots in this chapter were taken on Windows 10 and might vary for different versions of the OS

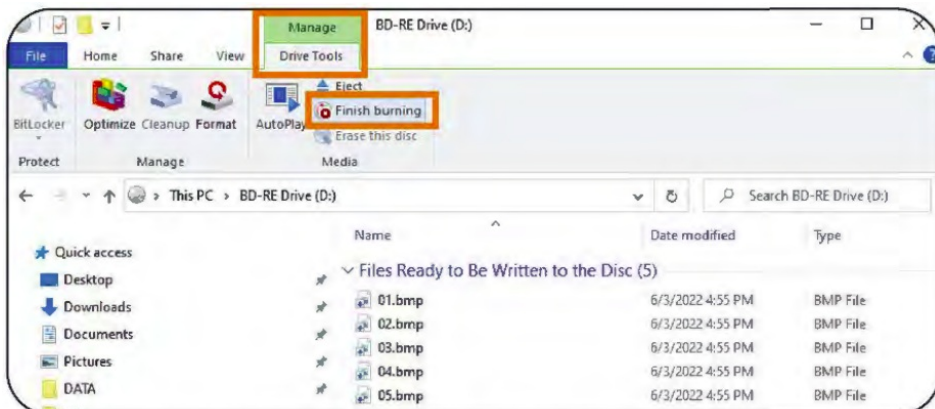
1. Place a blank compatible disc onto the disc compartment (F) and close it.



2. Click the notification that appears on the bottom right on the screen to select what to do with a blank disc

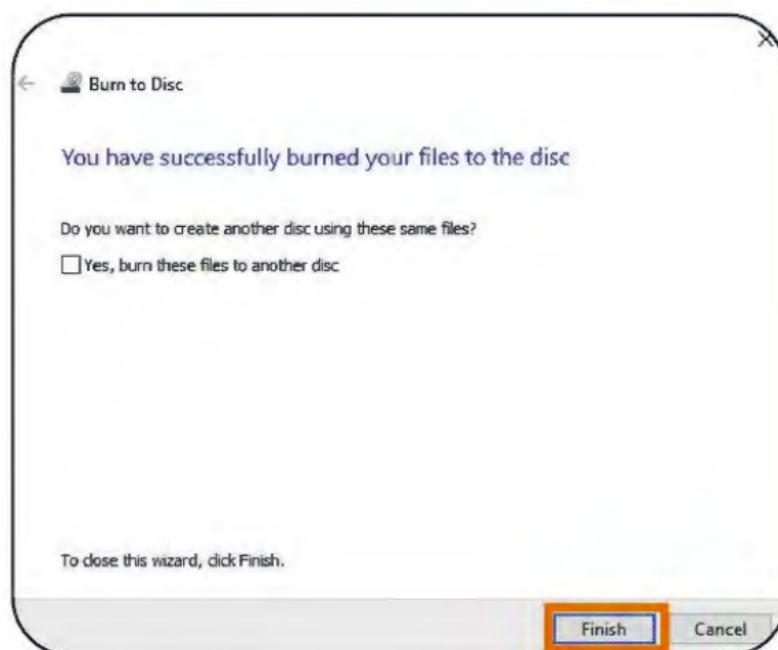
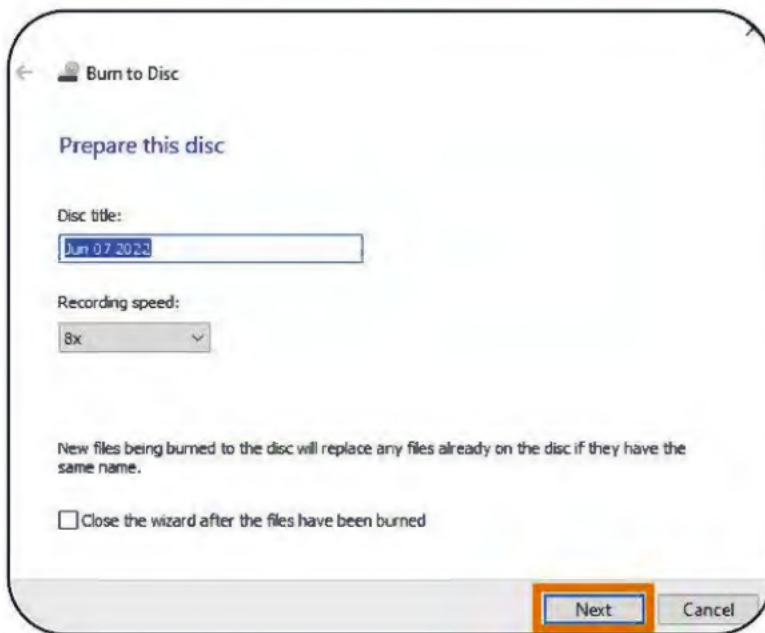


3. Select "Burn files to disc".
4. Once a pop-up window opens, input the disc title and select the "With a CD/DVD player" burning option then click "Next".
5. The disc drive folder opens with File Explorer.
6. Copy and paste or drag files or folders that are to be burned into the disc drive.

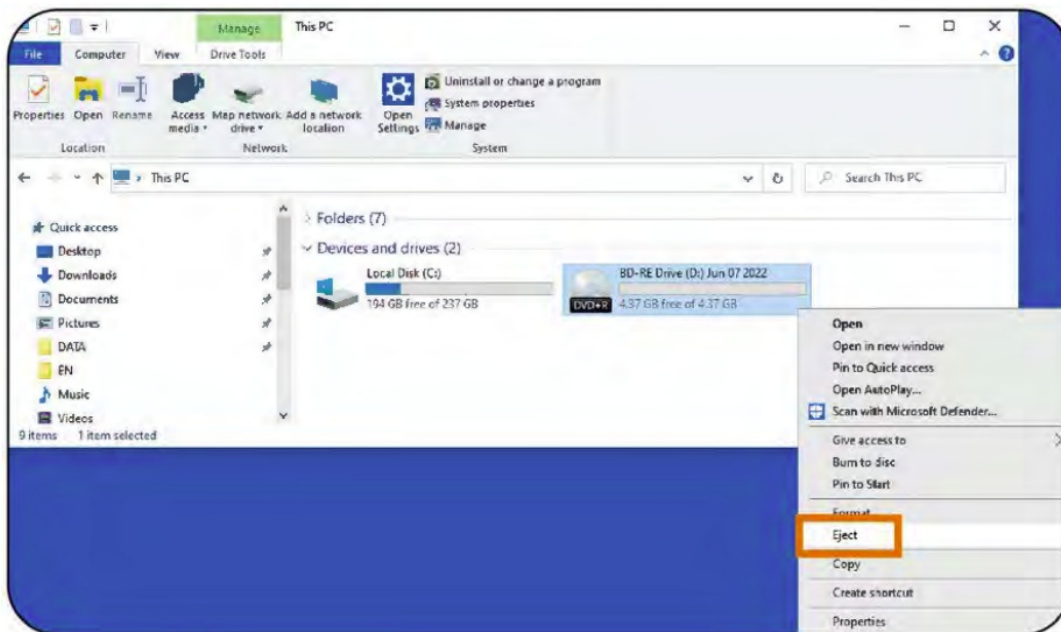


7. To burn the added files, click the "Manage" tab then "Drive Tools" on the tool bar ribbon of File Explorer then

click “Finish burning”.



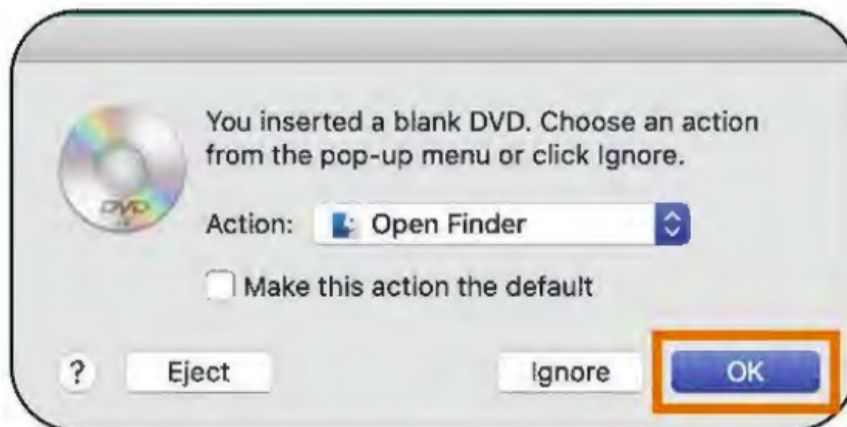
8. Once a pop-up window opens, set the disc title, recording speed then click “Next” to start the writing process.
The writing process may take some time depending on the size of the files.
9. After writing, click “Finish” to close the pop-up window.



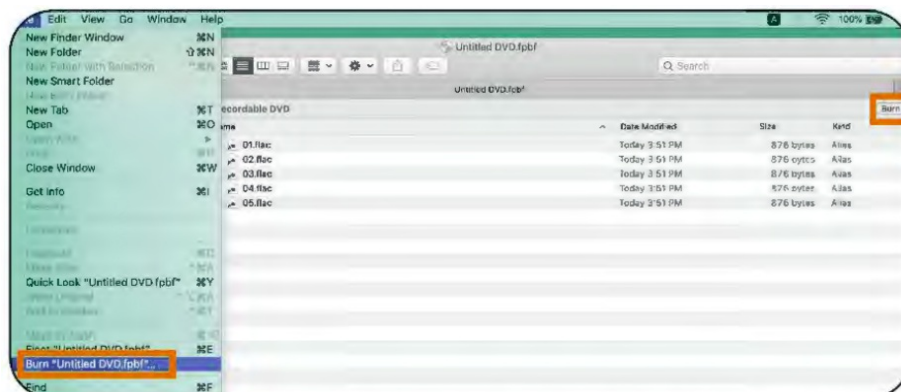
Mac®

NOTICE The screenshots in this chapter were taken on OS Catalina and might vary for different versions of the OS.

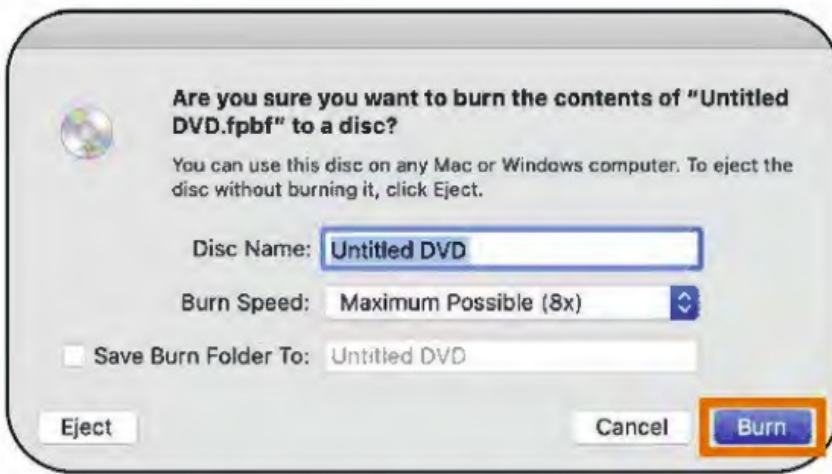
1. Place a blank compatible disc onto the disc compartment (F) and close it.



2. Once a pop-up window opens, set action to “Open Finder” then click “OK”
3. Finder opens the blank disc drive folder.
4. Copy and paste or drag files or folders that are to be burned into the disc drive.



5. To write the added files, click the “File” tab on the tool bar ribbon then click “Burn “Disc name”” or click “Burn” on the top right side of Finder.



6. Once a pop-up window opens, set the disc name, burn speed then click "Burn" to start the writing process. The writing process may take some time depending on the size of the files.
7. After writing, the pop-up window closes automatically.



Listening to music

Windows®

1. Place the desired disc onto the disc compartment (F) and close it.
2. Open the disc drive using a File explorer.
3. Double click the song that you want to play.
4. The Windows Media Player app / your default music player opens and plays the song.

Mac®

1. Place the desired disc onto the disc compartment (F) and close it.
2. Open the disc drive using a Finder.
3. Double click the song that you want to play.
4. The Music app / your default music player opens and plays the song.

Playing Blu-ray movies

NOTICE Windows and Mac® OS by default does not have a pre-installed Blu-ray player. Separate Blu-ray player software has to be installed or purchased separately. For more information and how to use the Windows programs included on the CD, please contact Cyberlink.

Windows®

1. Place the desired Blu-ray disc onto the disc compartment (F) and close it
2. Open the disc drive using a File explorer.
3. Right click on the movie file and on the pop-up window click "Open with".
4. Select the desired Blu-ray player software from the menu that appears. The movie file opens in the desired Blu-ray player software.

Mac®

1. Place the desired Blu-ray disc onto the disc compartment (F) and close it.
2. Open the disc drive using a Finder.
3. Right click on the movie file and on the pop-up window click "Open with".
4. Select the desired Blu-ray player software from the menu that appears. The movie file opens in the desired Blu-ray player software.

Using AV Connectivity function on TV

NOTICE Not all Smart TVs might support the AV Connectivity function. Refer to TV's user manual for more details.

AV connectivity means that the product can be connected to TVs that support USB interfaces and can then be used as an external USB drive.

1. Connect a data (1) USB-A plug of the USB-A power/data cable (H) to a USB 2.0 or 3.0 port on TV.
2. Press the open compartment button (D). The disc compartment (F) opens.
3. Press and hold the open compartment button (D) for 3 seconds. The indicator (E) stays on green. The ODD TV mode is activated, the product can now be used with the TV like a plugged in external USB drive.
4. Place the disc in and close the disc compartment (F). The contents of the disc is displayed on the TV.
5. Select the content to watch as desired.

NOTICE To set the product back to regular mode, open the disc compartment (F) then press and hold the open compartment button (D) for 3 seconds until the indicator (E) goes off.

Technical information

The time to recognize the device may differ depending on the number of files and the capacity of the disc.

Disc region code

Each region around the world has a different region number on the disc being sold in a region. The region code of the product can be changed to other regions up to 5 times by using the software decoder. After changing the region code 5 times, the product locks onto the last (5th change) region code and would be unable to change to another region code anymore.

Cleaning and Maintenance

NOTICE Unplug the product before cleaning.

Cleaning

- To clean the product, wipe with a soft, slightly damp cloth
- . Wipe the product dry after cleaning.
- Never use corrosive detergents, wire brushes, abrasive scourers, metal or sharp utensils to clean the product.

Handling the disc compartment

- Do not insert foreign objects into the disc compartment as this could damage the mechanics.
- The information from the compact disc is read by a laser from an optical lens. If the product is brought into a warm room after being in the cold, a build up of condensation on the optical lens may affect the playback quality. In this case, let the product adjust to the room temperature for approximately 1 hour before using. If the problem persists, consult a professional.

Handling discs



- Protect discs from dust or scratches.
- Keep discs out of direct sunlight and away from heat sources. Always store the compact disc in the disc case when not in use (Fig. 3a).
- To maintain the original content quality, occasionally wipe off the disc with a soft cloth, from the centre to the outer edge (not in a circular motion) (Fig. 3b). Do not use petrol or other solvents for cleaning.
- Only hold the disc on the edges (Fig. 3c).

Burning a disc is a sensitive data transmission procedure. The process can be easily affected by the slightest mechanical disturbance.

- Never clean the product with a commercially available CD/DVD/BD cleaning set. This can damage the product.

- Recordable and rewritable discs are more sensitive than commercially available discs. Use only a solvent-free, non abrasive marker when writing on a disc.
Do not stick labels on the discs.
- Do not use worn, damaged, cracked, warped or poor quality discs. They might affect the product and cause the disc to shatter.
- Do not play discs which are non-standard (non-circular) shape, such as heart-shaped discs or business card-shaped discs.

Storage

Store the product in its original packaging in a dry area. Keep away from children and pets.

Trademarks

“Ultra HD Blu-ray” is a trademark of Blu-ray Disc Association. ULTRAHD



Blu-ray “super multi” is a trademark of Hitachi-LG Data Storage, Inc.



Super multi “M-DISC” is a trademark of , Inc.



b) “Blu-ray” is a trademark of Sony and Blu-ray Disc Association. Blu-ray Disc



“BDXL” is a trademark of Sony and Blu-ray Disc Association.



Windows is a registered trademark of Microsoft Corporation. Mac is a registered trademark of Apple Inc.

Copyright Statement

This product and its software provided are only for reproducing material that you have the copyrights to or have permission to copy from the copyright owner. Without the copyrights or the permission to copy, you may be violating the copyright law and could be subjected to payment of damages and other remedies from the original copyrights owner. Contact your legal advisor if you are uncertain of your rights. You (the user) assume full responsibility for the responsible and legal use of this product and its software. This product was designed for private use only.

Specifications

Model number:

BP62N

Power input :

5 V 1.8 A Protection

Supported disc sizes:

3" (8 cm) and 4.7" (12 cm)

Reads:

DVD ROM, DVD R (Ver. 2.0 for Authoring) BD ROM, CD ROM, CD ROM XA, CD I, Video CD, CD Extra, CD Text, Photo CD (Single and Multi session), standard CD DA, UHD BD and M-Disc DVD

Reads and writes:

RAM (Ver.2.2), DVD+R, DVD+R DL (Double Layer), DVD+RW, BD R (SL/DL/TL*/QL*, LTH"), BD RE (SL/DL/TL), CD R discs conforming to "Orange Book Part 2", CD RW discs conforming to "Orange Book Part 3", DVD R/RW/RAM with CPRM and BDXL

Supports"

"CD layer" of Super Audio CD Hybrid type, AVCHD" format DVD disc, "AVCREC" format DVD disc, "DVD layer" of Hybrid Blu-ray disc and UHD BD ROM DL (50G/66G) and TL (100G) disc

and relative humidity:

15% to 80% (non-condensing)

humidity Altitude:



Operating 0 to 6561' (2000 m)

Dimensions (WxHxD):

approx. 5.7 x 0.6 x 6.1" (14.4 x 1.4 x 15.6 cm)



Documents / Resources

 	<p>amazon basics B09MW35J5R External Blu Ray Drive [pdf] Instruction Manual B09MW35J5R External Blu Ray Drive, B09MW35J5R, External Blu Ray Drive, Blu Ray Drive, Ray Drive, Drive</p>
--	--

References

-  [Amazon Basics](#)

- [User Manual](#)

[Manuals+](#), [Privacy Policy](#)