



amazon basics B095X5H16X Smart Dimmer Switch Single Pole User Manual

[Home](#) » [amazon basics](#) » amazon basics B095X5H16X Smart Dimmer Switch Single Pole User Manual 

Contents

- [1 amazon basics B095X5H16X Smart Dimmer Switch Single Pole](#)
- [2 Important Safeguards](#)
- [3 Intended Use](#)
- [4 Before First Use](#)
- [5 Product Description](#)
- [6 Electrical Wiring](#)
- [7 Set Up your Smart Dimmer Switch with Alexa](#)
- [8 Install Wall Plate](#)
- [9 Use](#)
- [10 Use your Smart Dimmer Switch with Alexa](#)
- [11 Frequently Asked Questions](#)
- [12 Cleaning and Maintenance](#)
- [13 FCC STATEMENT](#)
- [14 Specifications](#)
- [15 Feedback and Help](#)
- [16 Documents / Resources](#)
 - [16.1 References](#)
- [17 Related Posts](#)



amazon basics B095X5H16X Smart Dimmer Switch Single Pole



Important Safeguards

Read these instructions carefully and retain them for future use. If this product is passed to a third party, then these instructions must be included. When using electrical appliances, basic safety precautions should always be followed to reduce the risk of fire, electric shock, and/or injury to persons including the following:

WARNING: Risk of electric shock!

Do not install the product near wet locations such as kitchens or baths.

CAUTION: Use only with permanently installed fixtures with dimmable screw-in incandescent or screw-in dimmable LED lamps.

CAUTION: To reduce the risk of overheating and possible damage to other equipment, do not install to control a receptacle, a motor-operated appliance, a fluorescent lighting fixture, or a transformer-supplied appliance.

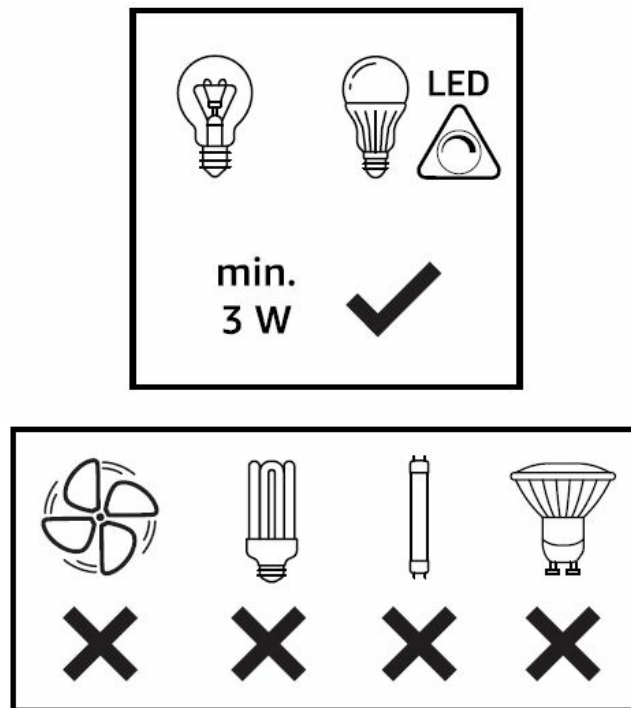
CAUTION: FOR CONTROL OF INCANDESCENT OR LED LUMINAIRES ONLY.

- The installation must comply with all applicable local or national codes, including the latest edition of the following standards:
 - **For US:** ANSI/NFPA70, National Electrical Code (NEC)
 - **For Canada:** CSA C22. 1, Parts 1 & II, Canadian Electrical Code
 - **For Mexico:** Mexican Electrical Code
 - [Instalaciones Electricas (utilizaci6n), NOM- 001-SEDE].
- It is recommended that a qualified electrician perform the installation, especially if you are unsure about any part of these instructions.
- This product is rated 120 V AC and must be connected to a suitable power source.
- Do not install near water or heat sources.
- Install only in a suitable UL Listed switch box.
- Connect only to terminal copper wire of 14 AWG, 16 AWG or 18 AWG. Do not use with aluminum wires.
- Maximum wire length between the product and the light fixture should not exceed 98' (30m).
- Do not attempt to disassemble, repair, or modify the product.

- For indoor use only.

SAVE THESE INSTRUCTIONS

Intended Use



- This product is intended to be used as a wall switch and a dimmer to control incandescent and LED light bulbs as part of permanent fixtures. It is intended to replace a standard switch receptacle. It can be connected and controlled through a Wi-fi connection with Amazon Alexa app or other external Alexa built-in devices.
- This product is intended for household use only.
- This product is intended to be used in dry indoor areas only.

Before First Use

DANGER: Risk of suffocation!

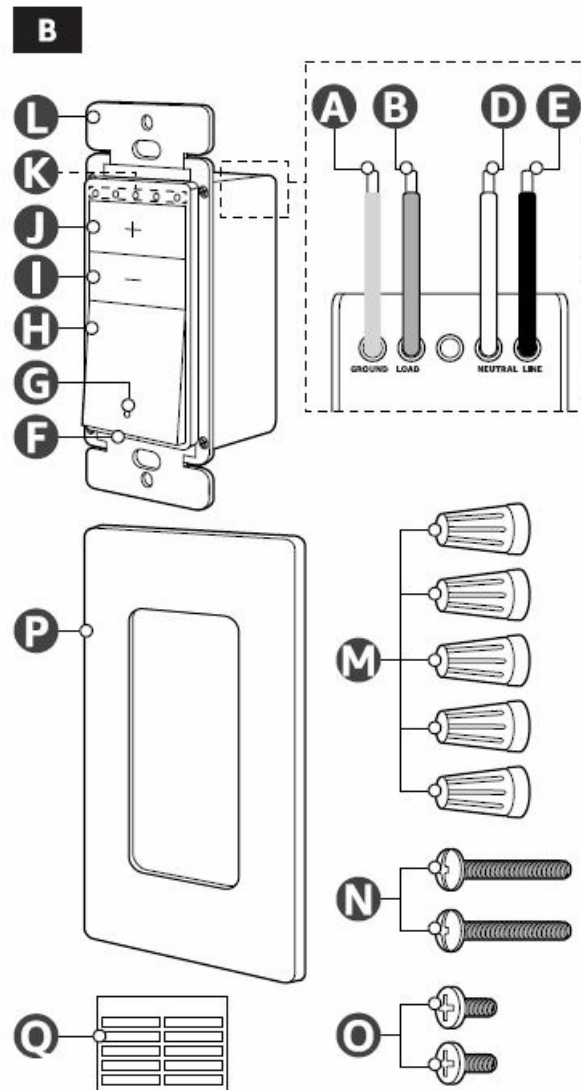
Keep any packaging materials away from children and pets – these materials are a potential source of danger, e.g. suffocation.

- Remove all the packing materials.
- Remove and review all components before use.
- Check the product for transport damages.
- Before connecting the product to the power supply, check that the power supply voltage and current rating corresponds with the power supply details shown on the product rating label.

Product Description

Overview

See foldout page Fig. B



- **A.** GROUND wire (green)
- **B.** LOAD wire (red)
- **C.** (not used)
- **D.** NEUTRAL wire (white)
- **E.** LINE wire (black)
- **F.** Air gap switch
- **G.** Status indicator
- **H.** On/off switch
- **I.** – decrease brightness button
- **J.** + increase brightness button
- **K.** Brightness indicators
- **L.** Main unit
- **M.** Twist-on wire connector x4
- **N.** #6-32 x 27 /32" machine screw x2
- **O.** #6-32 x 13/16" flat head screw x2
- **P.** Two-piece wall plate
- **Q.** Wire labels

Status indicator (G) guide

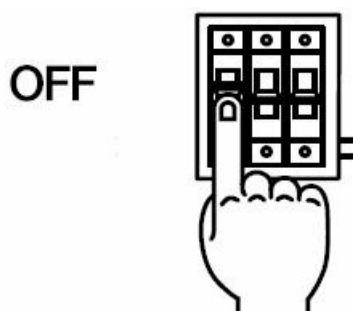
Status indicator (G)	Status
Green blinking	Device is ready for setup, or setup is in progress.
Amber	Light is off.
Indicator off	Light is on.
Red blinking	No network connection.
Solid red	Setup has timed out.
Solid green for 3 seconds	Device registered and connected.

- Red and green blinking alternately/ Factory reset is complete.

Electrical Wiring

DANGER: Risk of fire, electric shock or death! Turn off the power at circuit breaker or fuse and test that power is off before installation.

DANGER



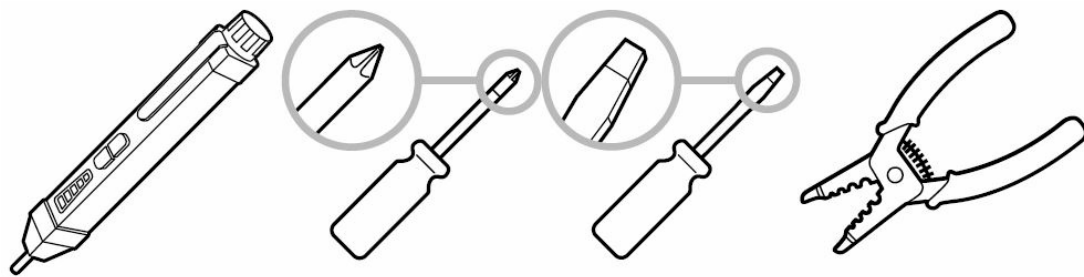
WARNING: Risk of electric shock!

- When no “grounding means” exists in the switch box, consult an electrician.
- Do not install the product without a proper ground connection.

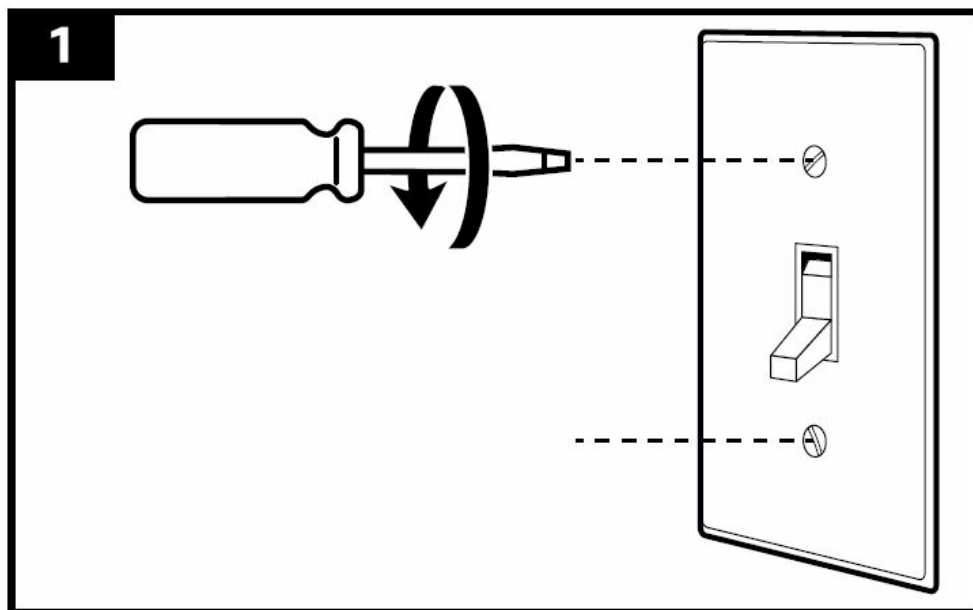
NOTICE

- Neutral wires are required for installation.
- If missing, look for a bundle of white wires folded in the back of the switch box.
- In USA, most homes built after 1978 have neutral wires.

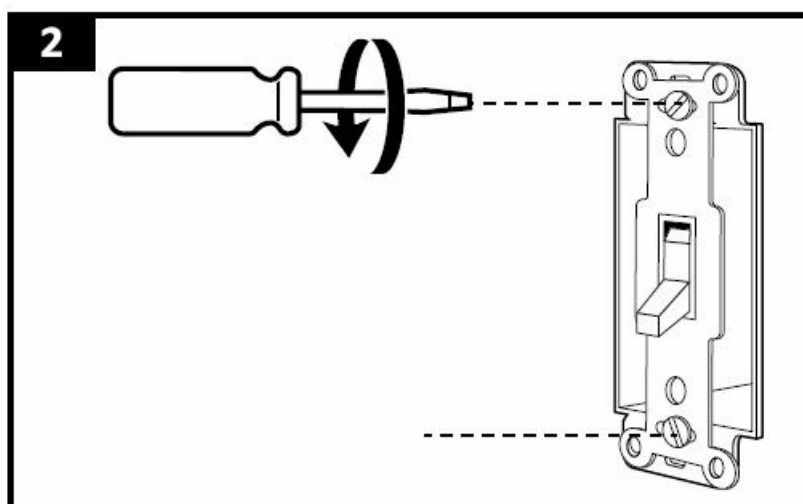
Tools needed



Remove existing switch(es)

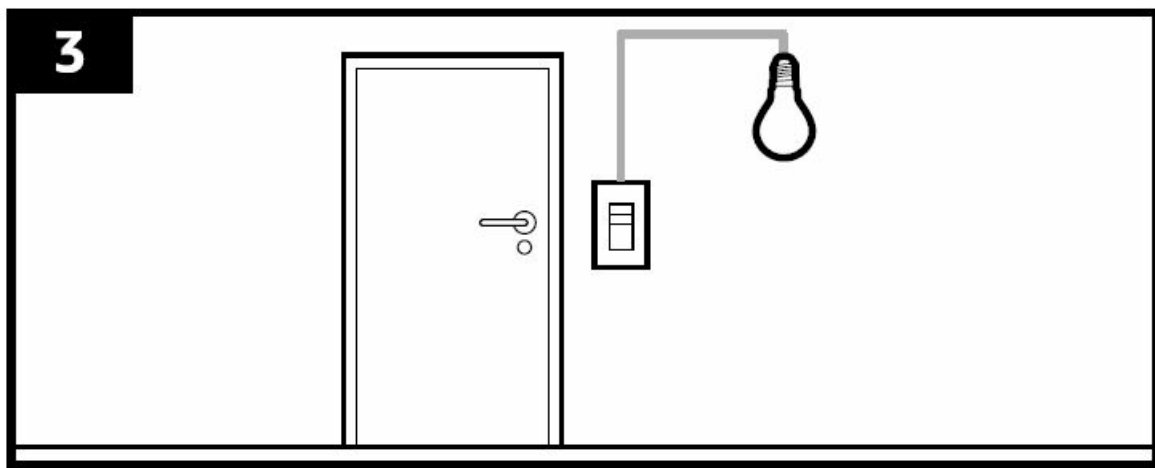


1. Unscrew and remove the existing wall plate (Fig. 1).



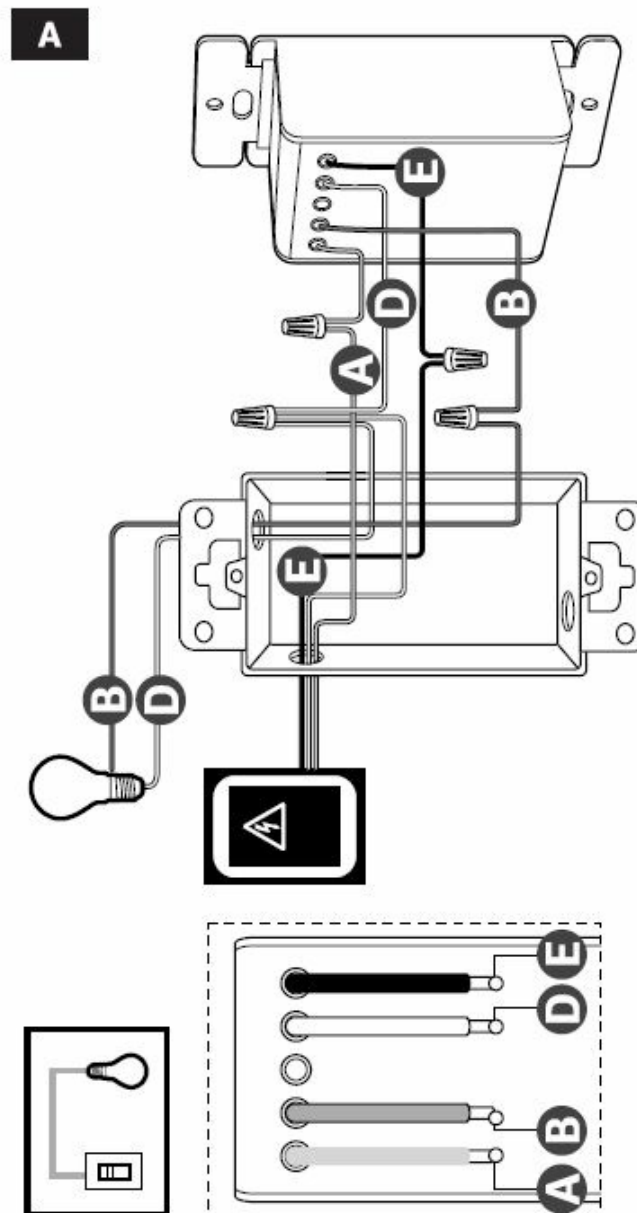
2. Unscrew and remove the existing switch receptacle (Fig. 2).

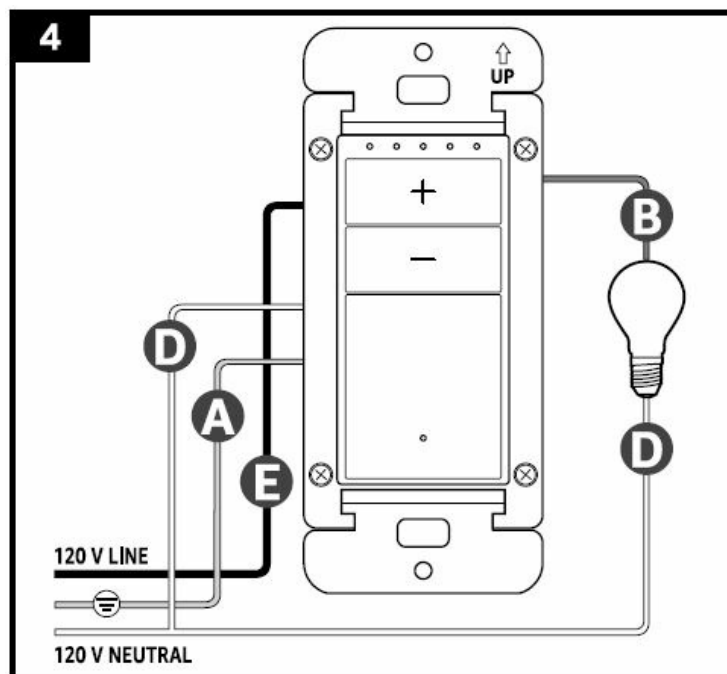
Single pole connection



- Single pole connection is designed for scenarios where 1 light is controlled with 1 switch (Fig. 3).

For detailed wiring diagram see Fig. A on foldout page.





1. Verify that the switch box has these wires and label them accordingly with the wire labels (Q):

LINE (black)	NEUTRAL (white) x2
GROUND (green or yellow/green)	LOAD (red)

- If any of the wire is missing or have a different color, stop the installation and contact a professional electrician.
2. Disconnect the wires from the existing switch.
 3. If needed, trim wires to 7 /16" (11 mm).
 4. Connect the GROUND wire (green) (A) on the product to the GROUND wire (green) from the breaker box.
 5. Connect the LINE wire (black) (E) on the product to the 120 V LINE wire (black) from the breaker box.
 6. Connect the NEUTRAL (white) wire (D) on the product and the NEUTRAL (white) wire coming from the light to the NEUTRAL (white) wire from the breaker box.
 7. Connect the LOAD (red) wire (B) on the product to the LOAD (red) wire from the light.
 - **NOTICE:** insert wires into the twist connector (M) then twist clockwise. Make sure the connection is tight by gently pulling all the cables one by one. Make sure no bare wire is shown below the wire connector.
 8. After the connections are completed, turn on the power at circuit breaker or fuse. Test if the switch works.

Set Up your Smart Dimmer Switch with Alexa

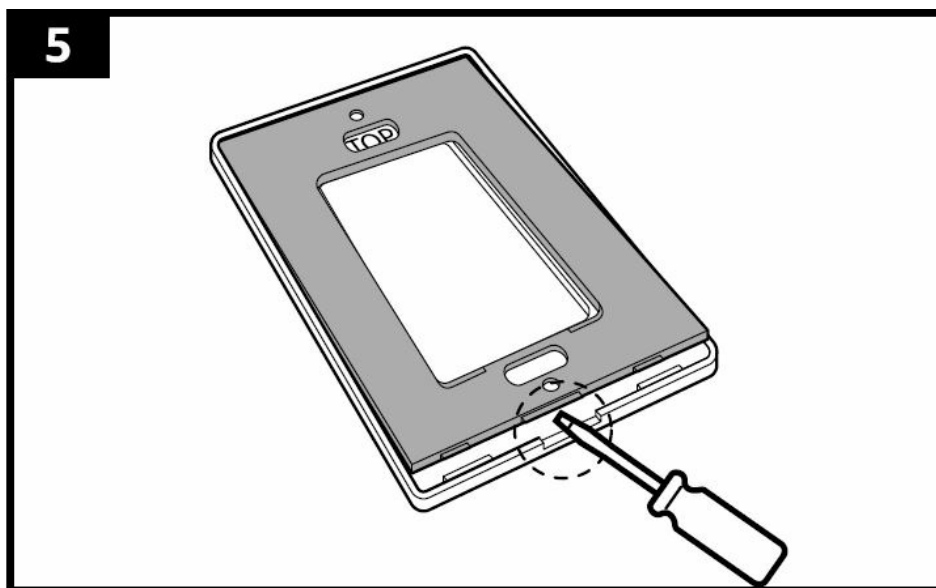
NOTICE: Before setting up the device, make sure the switch is powered on.

1. Download the latest version of the Alexa app from the app store.
2. Open the Alexa app and tap the "More" icon on bottom-right side of the screen.
3. Tap "Add a Device".
4. Select "Switch" -> "Amazon Basics" – select your device accordingly, then follow the on- screen instructions. If prompted by the app, scan the 2D barcode on the back page of the Quick Start Guide or on the device.

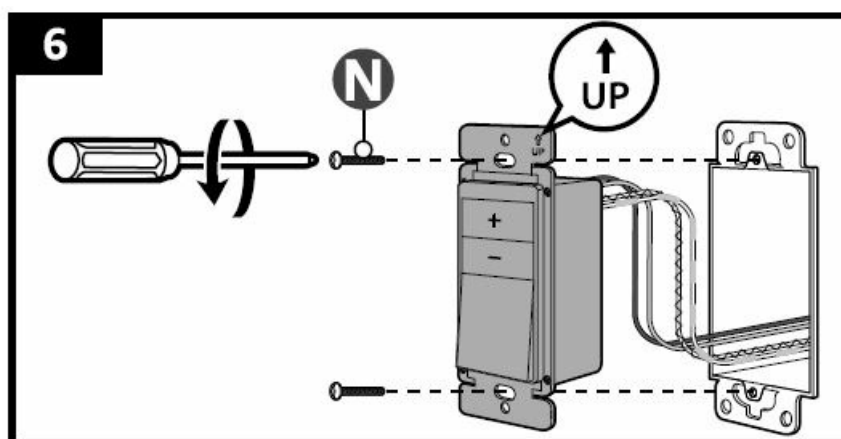
Install Wall Plate

NOTICE: If the product was installed next to other dimmers or switches, you will need to purchase a wall plate with the correct size/number of openings to accommodate all the units. Mounting 2 or more switches side by side reduces the dimmer's maximum wattage rating. For more details see "Specification" chapter.

1. Turn off the power at circuit breaker or fuse and test that power is off with a voltage detector.

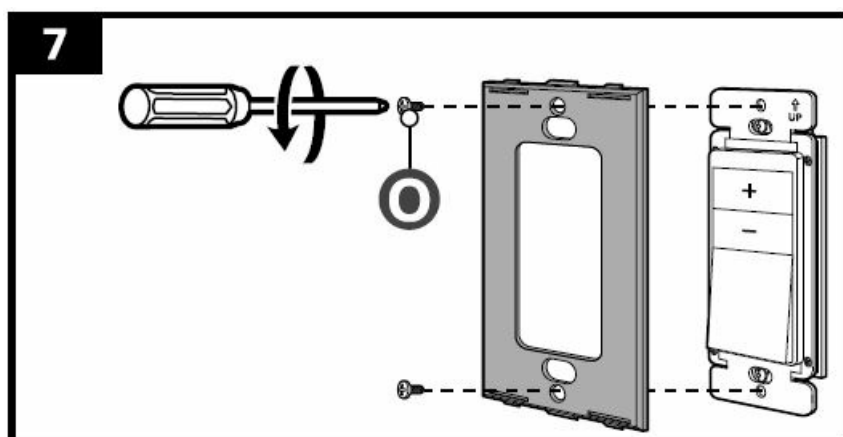


2. Use a flathead screwdriver to separate the two-piece wall plate (P) (Fig. 5).

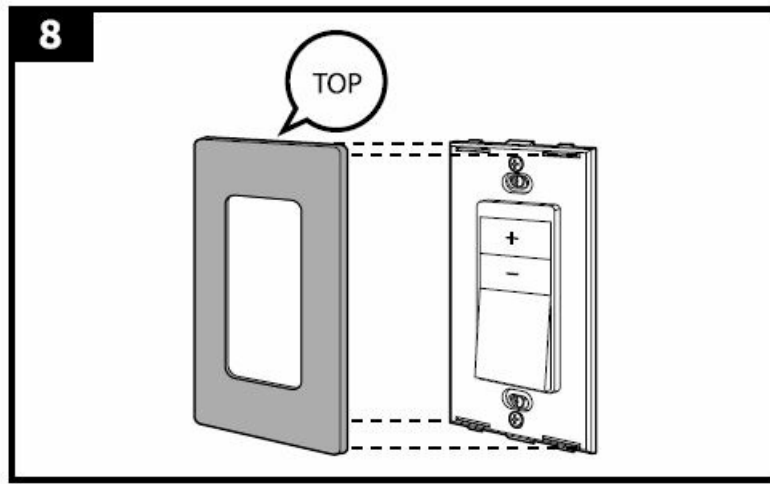


3. Insert the main unit (L) into the switch box being careful not to pinch any wires. Arrange the wires and tuck them in neatly (Fig. 6).

4. With the "UP" marking facing up, attach the main unit (L) to the switch box with the 2 screws (N) (Fig. 6).



5. Place the back piece of the wall plate on the main unit (L) and secure it with 2 screws (O) (Fig. 7).



6. With the “TOP” marking facing up, snap the front piece of the wall plate on the main unit (L) (Fig. 8).
7. After the installation, turn on the power at circuit breaker or fuse. Test if the smart switch(es) work(s).

Use

Control with main unit

- Press the on/off switch (H) to switch the light on/off.
- Press + (J) to increase brightness. Press – (I) to decrease brightness.

LED(s) on	Brightness level
1	1% - 20%
2	21% - 40%
3	41% - 60%
4	61% - 80%
5	81% - 100%

NOTICE

- Setting the brightness to the lowest setting does not fully switch off the light.

Adjusting dimming range

NOTICE: If the light is flickering, adjust the product to the lowest dimming brightness level.

1. Press the on/off switch (H) to switch on the light.
2. Press and hold the + (J) and – (I) buttons at the same time for 5 seconds. The status indicator (G) starts blinking.
3. Hold either the + (J) or – (I) button to set the lowest dimming brightness level. Adjust the light until there is no flickering.

4. After setting the lowest dimming brightness, press and hold the + (J) and – (I) buttons at the same time for 5 seconds. The status indicator (G) starts blinking.

Use your Smart Dimmer Switch with Alexa

- **Control the switch:** Tap “Devices” to find your device and control with Alexa.
- **Setup routines:** Tap “More” -> “Routines” to create a personalized routine for the device (e.g. setting a schedule so the light automatically turns on around the time you get home).

Use with Alexa Voice Commands

To use your device with Alexa, just say,

- “Alexa, turn on the dimmer switch”
- “Alexa, set the brightness to 50%”

Frequently Asked Questions

NOTICE: For more FAQ and more information, go to www.amazon.com/dp/B095X5H16X

Problem 1

- The light does not power on.

Solution 1

- Check the power at the circuit breaker or fuse.
- Verify that the wiring is correct.

Problem 2

- The light is flickering.

Solution 2

- Flickering caused by irregular power surges.
- Reset to the lowest dimming brightness (see 8.2).
- Bad connection. Recheck wiring.
- Verify that the wattage rating of the bulb is higher than 3 W. Bulbs with wattage rating less than 3 W are not compatible with the device.
- Verify that the bulb is in the compatibility list of Amazon Basics Smart Dimmer Switch.

Problem 3

- Alexa app cannot find or connect to the device during setup.

Solution 3

1. Check that your phone/tablet and the Alexa app have the latest software version.
2. Make sure that your phone/tablet and your device are connected to the same 2.4GHz Wi-Fi network only. The device is not compatible with 5G.
3. Check that your phone/tablet is within 30' (10 m) of your device.
4. Restart your device. To restart, power off and power it back on. Alternatively, pull out the air gap switch (F) and push it back in.
5. If you have restarted your device and it still is not working, do a factory reset: Press and hold the on/off switch (H) for 10 seconds. Release the switch once you see the status indicator (G) blinks green and red alternatively. The status indicator (G) blinks green when reset is complete. Then setup the device again.

Cleaning and Maintenance

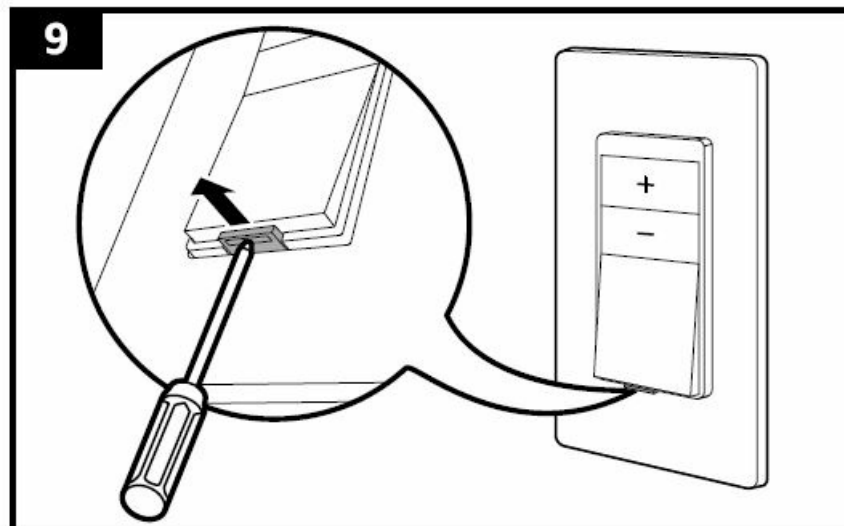
WARNING: Risk of electric shock!

- To prevent electric shock, turn off the power at circuit breaker or fuse before cleaning.

Cleaning

- To clean the product, wipe with a soft, slightly damp cloth.
- Never use corrosive detergents, wire brushes, abrasive scourers, metal or sharp utensils to clean the product.

Quick shut off



DANGER: Risk of fire, electric shock or death! Do not use the air gap switch (F) as a circuit breaker. Always turn power off at circuit breaker or fuse before wiring and replacing switches/dimmers.

To change the bulb without worrying that someone else in the house may turn the switch on accidentally, you can shut off the power directly at the switch. To do so, pull out the air gap switch (F) (Fig. 9). To resume power again, push the air gap switch (F) back in.

FCC STATEMENT

FCC – Supplier's Declaration of Conformity

- **Unique Identifier:** B095X5H16X – Smart Dimmer Switch, Single Pole, Works with Alexa
- **Responsible Party:** [Amazon.com](https://www.amazon.com) Services LLC.
- **U.S. Contact Information:** 410 Terry Ave N. Seattle, WA 98109 USA
- **Telephone Number:** (206) 266-1000

FCC Compliance Statement

1. This device complies with Part 15 of the FCC Rules. Operation is subject to the following two conditions:
 1. this device may not cause harmful interference, and
 2. this device must accept any interference received, including interference that may cause undesired operation.
2. Changes or modifications not expressly approved by the party responsible for compliance could void the user's authority to operate the equipment.

FCC Interference Statement

This equipment has been tested and found to comply with the limits for a Class B digital device, pursuant to part 15 of the FCC Rules. These limits are designed to provide reasonable protection against harmful interference in a residential installation. This equipment generates, uses and can radiate radio frequency energy and, if not installed and used in accordance with the instructions, may cause harmful interference to radio communications. However, there is no guarantee that interference will not occur in a particular installation. If this equipment does cause harmful interference to radio or television reception, which can be determined by turning the equipment off and on, the user is encouraged to try to correct the interference by one or more of the following measures:

- Reorient or relocate the receiving antenna.
- Increase the separation between the equipment and receiver.
- Connect the equipment into an outlet on a circuit different from that to which the receiver is connected.
- Consult the dealer or an experienced radio / TV technician for help.

RF Warning Statement: The device has been evaluated to meet general RF exposure requirements. This device should be installed and operated with minimum distance of 8" (20 cm) between the radiator and your body.

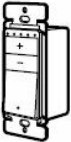
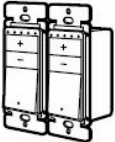
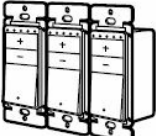
Canada IC Notice

- This device contains licence-exempt transmitter(s)/receiver(s) that comply with Innovation, Science and Economic Development Canada's licence-exempt RSS(s). Operation is subject to the following two conditions:
 1. this device may not cause interference.
 2. this device must accept any interference, including interference that may cause undesired operation of the device.
- This equipment complies with Industry Canada radiation exposure limits set forth for an uncontrolled environment.
- This Class B digital apparatus complies with Canadian CAN ICES-003(B) / NMB-003(B) standard.

Specifications

Model	SD29
Rated voltage	120 V AC 60 Hz
Output voltage	Dimmed (120 V AC max.)
Maximum load	LED: 150 W max. Incandescent: 450 W max.
Operating temperature	14 °F to 104 °F (-10 °C to 40 °C)
Operating humidity	10 % - 85 % RH, non-condensing
Wi-Fi frequency	2412 MHz - 2484 MHz
Wi-Fi protocol	IEEE 802.11b/g/n
Wi-Fi range	98 feet (30 m)
Bluetooth® version	V4.2
Bluetooth® range	98 feet (30 m)

Installing 2 or 3 product in the multiple gang boxes, reduces product's maximum wattage rating as per below table:

No. of switches	LED lamp	Incandescent lamp
	150 W	450 W
	150 W	350 W
	150 W	300 W

Feedback and Help

We would love to hear your feedback. To ensure we are providing the best customer experience possible, please consider writing a customer review.

Scan QR Code below with your phone camera or QR reader:



If you need help with your Amazon Basics product, please use the website or number below.

- amazon.com/gp/help/customer/contact-us
- +1 877-485-0385

Smart Dimmer Switch. Single Pole



amazon.com/AmazonBasics

Documents / Resources

	amazon basics B095X5H16X Smart Dimmer Switch Single Pole [pdf] User Manual B095X5H16X Smart Dimmer Switch Single Pole, B095X5H16X, Smart Dimmer Switch Single Pole, Switch Single Pole, Single Pole
---	--

References

- [User Manual](#)