



# amazon basics B08SJRLF5C Portable Electric Pencil Sharpener Instruction Manual

[Home](#) » [amazon basics](#) » amazon basics B08SJRLF5C Portable Electric Pencil Sharpener Instruction Manual 

## Contents

- [1 amazon basics B08SJRLF5C Portable Electric Pencil Sharpener](#)
- [2 Important Safety Instructions](#)
- [3 Battery Warnings](#)
- [4 Intended Use](#)
- [5 Appliance Description](#)
- [6 Before First Use](#)
- [7 Operation](#)
- [8 Cleaning and Maintenance](#)
- [9 Troubleshooting](#)
- [10 Specifications](#)
- [11 Disposal](#)
- [12 FCC](#)
- [13 Battery Disposal](#)
- [14 Feedback and Help](#)
- [15 Documents / Resources](#)
- [16 Related Posts](#)



amazon basics B08SJRLF5C Portable Electric Pencil Sharpener



## Important Safety Instructions

- Read these instructions carefully and retain them for future use. If this appliance is passed to a third party, then these instructions must be included.
- When using electrical appliances, basic safety precautions should always be followed to reduce the risk of fire, electric shock, and/or injury to persons including the following:

### WARNING

- Do not disassemble the appliance

### CAUTION Risk of injury!

- Do not allow children to use the appliance unsupervised or pets to approach it.
- Do not put your fingers into the pencil intake.

### Risk of damage!

- Only use AA/LRG batteries or the 5.0 V= USB power cable provided.
- Always remove the pencil after sharpening it. Otherwise the

## CAUTION Risk of injury!

- Sharp edges. Do not touch the blades.
- To protect against risk of electric shock do not put the main unit in water or other liquid.
- This appliance is not a toy. Persons (including children) with reduced physical, sensory, or mental capabilities, or lack of experience and knowledge, should not use it unless they are closely supervised and instructed concerning use of the appliance by a person responsible for their safety.
- Turn the appliance OFF by disconnecting it from all power sources.
- Disconnect the USB power cable and remove the batteries when not in use.

## Battery Warnings

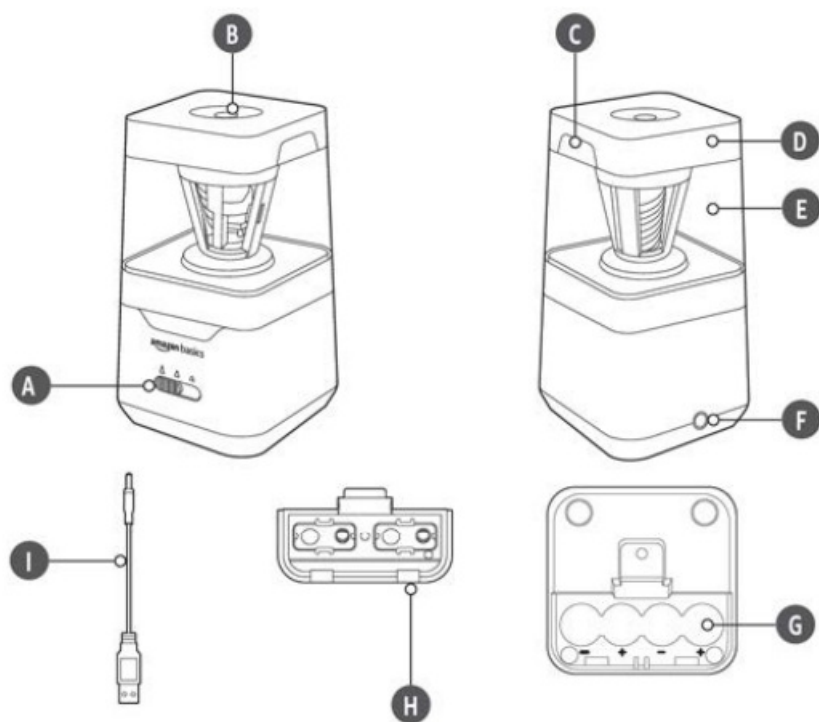
**NOTICE** The batteries are not included.

- Always insert batteries correctly with regards to polarity(+ and-) marked on the battery and the appliance.
- Exhausted batteries should be immediately removed from appliance and properly disposed.

## Intended Use

- This appliance is intended for sharpening standard wooden pencils. Other writing utensils, such as chalk, crayons or oil pastels may damage the appliance.
- This appliance is intended for use in households, schools, offices and similar environments.
- This appliance is intended to be used in dry indoor areas only.
- No liability will be accepted for damages resulting from improper use or non-compliance with these instructions.

## Appliance Description



- **A.**Nib selector
- **B.**Pencil intake

- **C.**Cover locks
- **D.**Cover
- **E.**Shavings box
- **F.**DC socket
- **G.**Battery compartment
- **H.**Battery cover
- **I.**USB power cable

## Before First Use

### **DANGER Risk of suffocation!**

- Keep any packaging materials away from children and pets these materials are a potential source of danger, e.g. suffocation.
- Check the appliance for transport damages.
- Remove all the packing materials.

## Operation

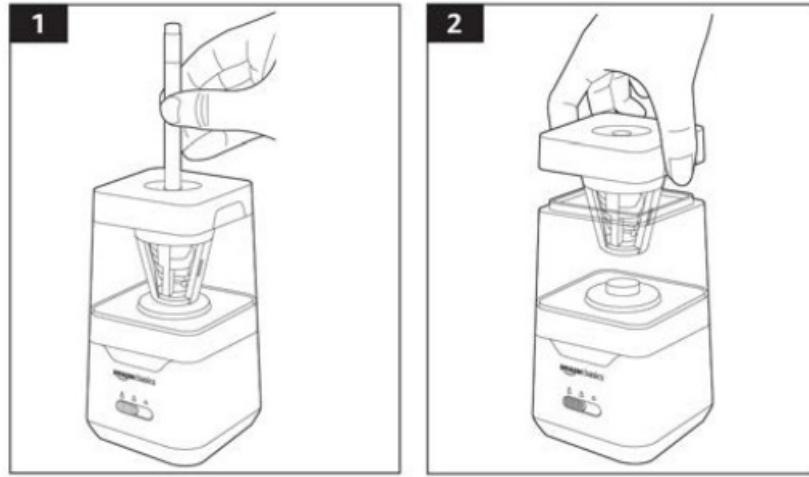
### **Choosing the power source**

- **NOTICE** Using the appliance continuously for long periods of time can damage it. When the appliance starts to emit heat, let it rest until it cools down again.
- Insert the USB power cable (1) into the appliance's DC socket (F) and the USB plug to a suitable USB socket.
- Alternatively, the appliance can be powered with 4 AA/LR6 batteries (not included). Proceed as follows to use batteries:

1. Remove the battery cover (H) from the battery compartment (G).
2. Observe correct polarity when inserting batteries, as displayed on the battery compartment (G).
3. Close the battery compartment. It is fully closed when the battery cover locks into place with an audible click.

## Sharpening

- Use the nib selector (A) to choose adjust the sharpness.
- for sketching
- for line variation
- for shading



1. Place the appliance on an even surface and insert a pencil into the pencil intake (B) (see Fig. 1).
2. Adjust the nib selector (A) to choose the sharpness of the tip.
3. Carefully press the pencil into the pencil intake until the appliance starts sharpening. Hold the pencil so firmly that it does not rotate with the motor.

**NOTICE** The motor will stop automatically once the pencil is sharp.

4. Press the cover locks (C) and remove the cover (D) to discard the pencil shavings (see Fig. 2).

## Cleaning and Maintenance

### Cleaning

- To clean the appliance, disconnect all power sources. Remove the batteries and disconnect the DC plug from the DC socket and wipe the appliance with a soft, slightly moist cloth.
- Dry the appliance after cleaning.
- Never use corrosive detergents, wire brushes, abrasive scourers, metal or sharp utensils to clean the appliance.

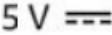
### Storage

- Remove the batteries and store the appliance in its original
- packaging in a dry area. Keep away from children and pets.

## Troubleshooting

Problem	Reason/Solution
The motor stops rotating or does not switch on.	<ul style="list-style-type: none"><li>▶ The pencil is sharp enough. The motor senses this and stops when the pencil is fully sharpened.</li><li>▶ There is no power supply. Check if the USB plug and the DC plug are properly connected to a USB outlet and the DC socket respectively. When using batteries, make sure that the polarity is correct and that the batteries are charged.</li><li>▶ The contact plates for the power supply are blocked by shavings. Empty the shavings box (E) and wipe the contact plates of any dirt before putting back the cover (D).</li></ul>
The appliance gets hot and the motor stops turning.	The motor is overheated. Once it cools down, the appliance will work again.

## Specifications

Model number	71202
Input voltage (DC socket)	5 V 
Input current (DC socket)	2.0 A
Battery voltage/type	4 x 1.5 V AA/LR6
Pencil diameter range	0.27 to 0.31" (6.9 to 8 mm)
Casing material	ABS
Net weight	approx. 0.57 lbs (0.258 kg)
Dimensions (W x H x D)	approx. 2.83 x 5.08 x 2.83" (7.2 x 13 x 7.2 cm)

## Disposal

The Waste Electrical and Electronic Equipment (WEEE) Directive aims to minimise the impact of electrical and electronic goods on the environment, by increasing re-use and recycling and by reducing the amount of WEEE going to landfill. The symbol on this appliance or its packaging signifies that this appliance must be disposed separately from ordinary household wastes at its end of life. Be aware that this is your responsibility to dispose of electronic equipment at recycling centers in order to conserve natural resources. Each country should have its collection centers for electrical and electronic equipment recycling. For information about your recycling drop off area, please contact your related electrical and electronic equipment waste management authority, your local city office, or your household waste disposal service.

## FCC

### FCC-Supplier's Declaration of Conformity

Unique Identifier	B08SJRLF5C - Amazon Basics Portable Electric Pencil Sharpener, Helical Blade, Auto Stop, Battery/USB Cord Operated
Responsible Party	Amazon.com Services LLC.
U.S. Contact Information	410 Terry Ave N. Seattle, WA 98109 USA
Telephone Number	(206) 266-1000

### FCC Compliance Statement

1. This device complies with Part 15 of the FCC Rules. Operation is subject to the following two conditions:
  1. this device may not cause harmful interference, and
  2. this device must accept any interference received, including interference that may cause undesired operation.
2. Changes or modifications not expressly approved by the party responsible for compliance could void the user's authority to operate the equipment.

### FCC Interference Statement

This equipment has been tested and found to comply with the limits for a Class B digital device, pursuant to part 15 of the FCC Rules. These limits are designed to provide reasonable protection against harmful interference in a residential installation. This equipment generates, uses and can radiate radio frequency energy and, if not installed and used in accordance with the instructions, may cause harmful interference to radio communications. However, there is no guarantee that interference will not occur in a particular installation. If this equipment does cause harmful interference to radio or television reception, which can be determined by turning the equipment off and on, the user is encouraged to try to correct the interference by one or more of the following measures:

- Reorient or relocate the receiving antenna.
- Increase the separation between the equipment and receiver.
- Connect the equipment into an outlet on a circuit different from that to which the receiver is connected.
- Consult the dealer or an experienced radio / TV technician for help.

### Canada IC Notice

- This device contains licence-exempt transmitter(s)/receiver(s) that comply with Innovation, Science and Economic Development Canada's licence-exempt RSS(s).
- Operation is subject to the following two conditions:
  - this device may not cause interference, and
  - this device must accept any interference, including interference that may cause undesired operation of the device.
- This equipment complies with Industry Canada radiation exposure limits set forth for an uncontrolled environment.
- This Class B digital apparatus complies with Canadian CAN ICES-003(B) / NMB-003(B) standard.

## Battery Disposal

- Do not dispose of used batteries with your household waste.
- Take them to an appropriate disposal/collection site.
- To learn more about recycling batteries, visit: [call2recycle.org/what-can-i-recycle](http://call2recycle.org/what-can-i-recycle)

## Feedback and Help

- We would love to hear your feedback. To ensure we are providing the best customer experience possible, please consider writing a customer review.
- **Scan the QR Code below with your phone camera or QR reader:**



- **US:**
- **UK:** [amazon.co.uk/review/review-your-purchases](https://amazon.co.uk/review/review-your-purchases)
- If you need help with your Amazon Basics product, please use the website or number below.
- **US:** [amazon.com/gp/help/customer/contact-us](https://amazon.com/gp/help/customer/contact-us)
- **UK:** [amazon.co.uk/gp/help/customer/contact-us](https://amazon.co.uk/gp/help/customer/contact-us)
- +1 877-485-0385 (US Phone Number)
- [amazon.com/AmazonBasics](https://amazon.com/AmazonBasics)
- **MADE IN CHINA**

## Documents / Resources

[illegible]