



amazon basics B08NTPSPNM Dual Brew Single Serve Capsule Coffee Maker User Guide

[Home](#) » [amazon basics](#) » amazon basics B08NTPSPNM Dual Brew Single Serve Capsule Coffee Maker User Guide 

amazon basics



Dual Brew Single Serve Capsule Coffee Maker
B08NTPSPNM

Contents

1 IMPORTANT SAFEGUARDS

2 Intended Use

3 Product Description

4 Before First Use

5 Operation

6 Cleaning and Maintenance

7 Troubleshooting

8 Specifications

9 Feedback and Help

10 Documents / Resources

10.1 References

IMPORTANT SAFEGUARDS



Read these instructions carefully and retain them for future use. If this appliance is passed to a third party, then these instructions must be included.

When using electrical appliances, basic safety precautions should always be followed to reduce the risk of fire, electric shock, and/or injury to persons including the following:



The exclamation point within equilateral triangle, is intended to alert the user to the presence of important operating and maintenance (servicing) instructions in the literature accompanying the appliance.



The lightning flash with arrowed symbol, within equilateral triangle, is intended to alert the user to the presence of insulated “dangerous voltage” within the appliance’s enclosure that may be sufficient magnitude to constitute a risk of fire or electric shock to person.



WARNING

Risk of burn!

- Steam evaporates from the appliance when in operation. Do not place hands on or near the appliance when in operation.
- To avoid the risk of injury, do not open the brew chamber during the brew Process.



CAUTION

Risk of injury

The underside of the lid and the inside of the capsule holder contains sharp needles. Use caution when handling and during cleaning. Do not touch the needles.

1. Read all instructions.
2. Do not touch hot surfaces. Use handles or knobs.
3. To protect against fire, electric shock and injury to persons do not immerse cord, plugs, or appliance in water or other liquid.
4. Close supervision is necessary when any appliance is used by or near children.
5. Unplug from outlet when not in use and before cleaning. Allow to cool before putting on or taking off parts, and before cleaning the appliance.
6. Do not operate any appliance with a damaged cord or plug or after the appliance malfunctions, or has been

damaged in any manner. Return appliance to the nearest authorized service facility for examination, repair or adjustment.

7. The use of accessory attachments not recommended by the appliance manufacturer may result in fire, electric shock or injury to persons.
8. Do not use outdoors.
9. Do not let cord hang over edge of table or counter, or touch hot surfaces.
10. Do not place on or near a hot gas or electric burner, or in a heated oven.
11. To disconnect, press either the CAPSULE or GROUND button, until the indicator light switches off, then remove plug from wall outlet.
12. Do not use appliance for other than intended use.
13. Do not immerse in water.
14. Extreme caution must be used when moving an appliance containing liquids.
15. Do not open the release lever, the lid or remove the ground coffee holder/capsule holder during or immediately after use. Always exercise caution when opening the lid or removing the ground coffee holder/capsule holder after use. Hot steam might be trapped beneath.
16. Scalding may occur if the lid is opened during the brewing cycles.
17. To reduce the risk of fire, do not place any heating or cooking appliance beneath the appliance.
18. To reduce the risk of fire, do not store anything directly on top of the appliance surface when the appliance is in operation.
19. Only use capsules intended for this appliance. If the capsule does not fit, do not force the capsule into the appliance.
20. Do not use the appliance with an empty or under filled water tank. Ensure the water level is always between the Min (602) and Max (2402) marking. Do not fill the water tank over the Max marking. Remove the water tank and drain excess water if needed.
21. Keep the area above the appliance clean and clear during use, as hot steam will escape from the appliance.
22. Do not use the appliance without a suitable cup/mug placed under the nozzle.
23. Do not use the appliance without the ground coffee holder/capsule holder.
24. This appliance has a polarized plug (one blade is wider than the other). To reduce the risk of electric shock, this plug is intended to fit into a polarized outlet only one way. If the plug does not fit fully into the outlet, reverse the plug. If it still does not fit, contact a qualified electrician. Do not attempt to modify the plug in any way.
25. Always use fresh and cold water for brewing. Do not fill the water tank with hot water, milk or other liquids for brewing.

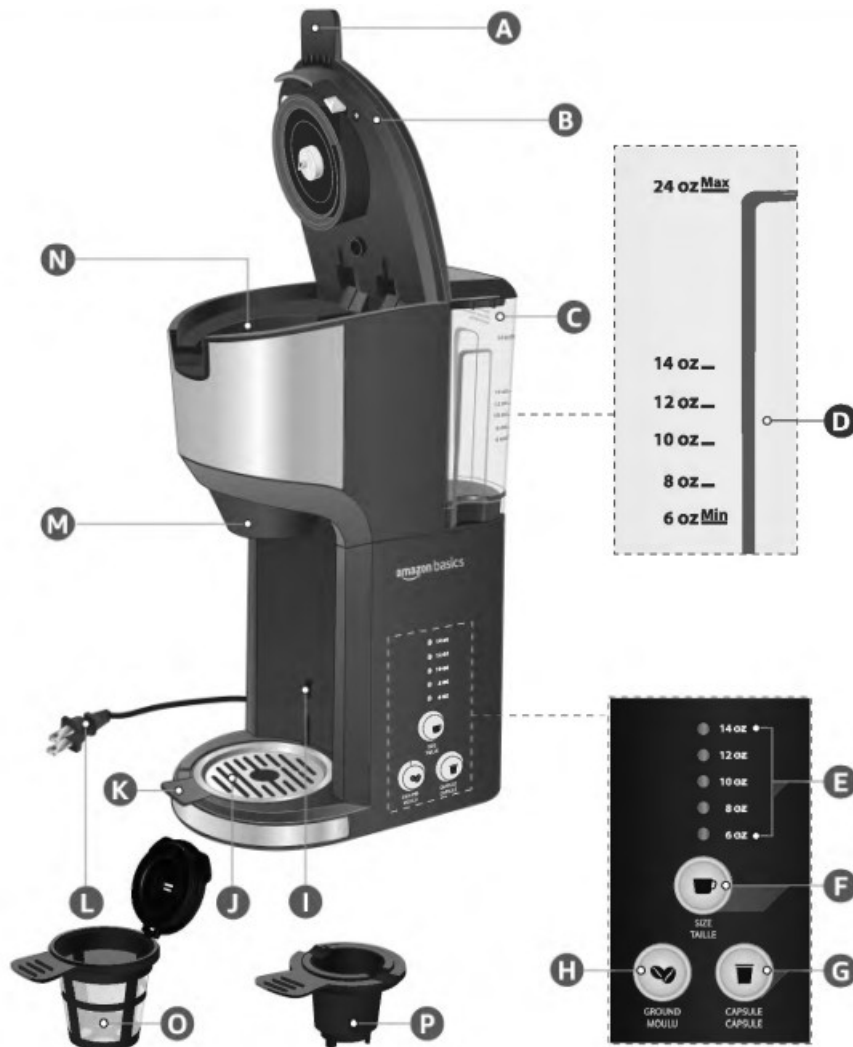
SAVE THESE INSTRUCTIONS HOUSEHOLD USE

26. A short power-supply cord is to be provided to reduce risks resulting from becoming entangled in or tripping over a longer cord.
27. Extension cords are available and may be used if care is exercised in their use.
28. If an extension cord is used:
 - The marked electrical rating of the extension cord should be at least as great as the electrical rating of the appliance.
 - The longer cord should be arranged so that it does not drape over the counter top or table top where it can be pulled on by children or tripped over.

Intended Use

- This appliance is intended for brewing ground or capsule coffee.
- This appliance is intended for household use only.
- This product is intended to be used in dry indoor areas only.
- No liability will be accepted for damages resulting from improper use or non-compliance with these instructions.

Product Description



- A Release lever
- B Lid with needle and seal
- C Water tank with lid
- D water level gauge
- E Cup size indicator
- F Cup SIZE button with indicator light
- G CAPSULE button with indicator light
- H GROUND button with indicator light
- I Orip tray mounting stots
- J cup holder
- K Orip tray
- L Power cord with plug
- M Nozzle
- N insert holder
- O Ground coffee holder
- P Capsule holder

Before First Use

⚠ DANGER Risk of suffocation!

- Keep any packaging materials away from children and pets — these materials are a potential source of danger, e.g. suffocation.

NOTICE Make sure the water tank lid (C) is closed firmly before switching on the appliance.

- Remove all the packing materials.
- Check the appliance and accessories for transport damages.
- Clean the appliance and accessories before first use.
- Place the appliance on a clean, flat and heat resistant surface (Fig. 1).



- Before connecting the appliance to the power supply, check that the power supply voltage and current rating corresponds with the power supply details shown on the appliance rating label.

4.1 Preparing the appliance

- To clean the manufacturing residues, operate the appliance as described in chapter 5.1: Brewing coffee, but without coffee.
- Discard the water afterwards.

Operation

⚠ CAUTION
Risk of burns!

- Do not operate the appliance without the lid (B) fully closed and locked (Fig. 2).

Fig. 2



- Do not touch the metal housing on the front of the appliance as it will get hot during operation (Fig. 3).
- Do not remove the cup/mug until all indicator lights have switched off.
- During operation, the appliance produces hot steam. Keep clear of the area above the appliance at all times.

NOTICE Choose the correct accessory for the type of brewing required (Fig. 4).

NOTICE Do not place ground coffee or capsule directly into the insert holder (N) (Fig. 5).

Fig. 3



Fig. 4

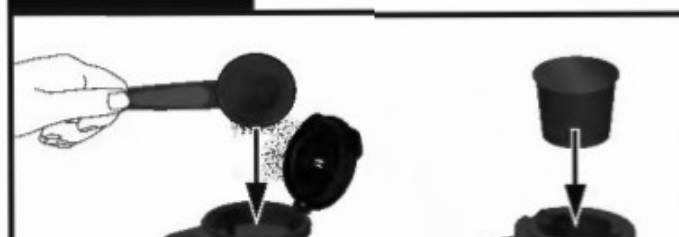
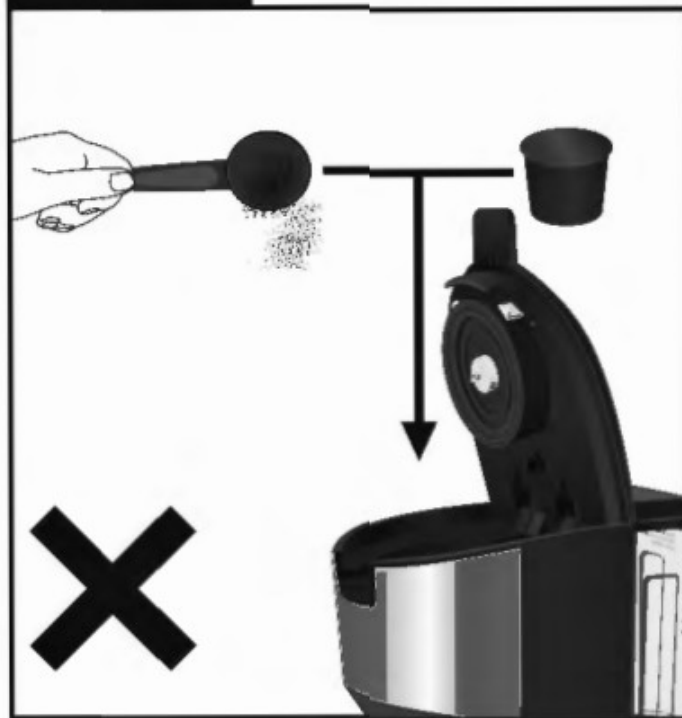




Fig. 5



NOTICE

- Do not compress the ground coffee in the ground coffee holder (0).
- Do not use ground coffee for Espresso, as it is too fine and can clog the ground coffee holder (0).

NOTICE

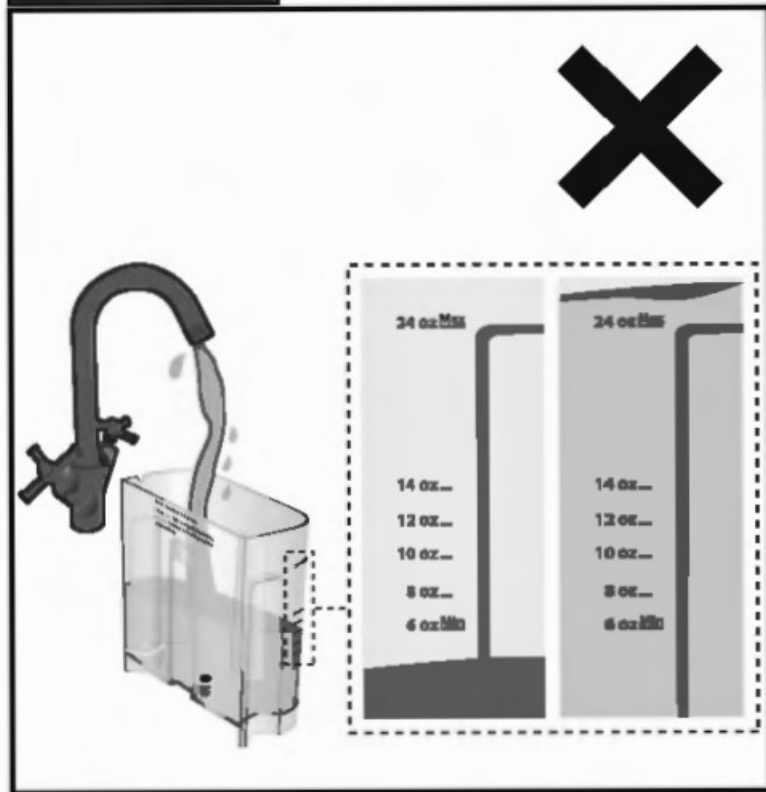
This product is intended to be used with K-Cup® style capsules. If defective or other style capsules are used the appliance may not operate properly. The appliance may leak or allow hot liquid or hot coffee to spill from the brewer.

K-Cup® is a registered trademark of Keurig, Incorporated. Neither Amazon nor the Amazon Basics brand has any affiliation with Keurig, Incorporated. This product is not manufactured, distributed, licensed, or endorsed by Keurig, Incorporated.

5.1 Brewing coffee

1. Remove the water tank with lid (C) from the appliance.
2. Open the water tank lid and fill the water tank (C) with cold drinking water. Fill water above the Min level and do not exceed the Max level as indicated on the water level gauge (D) (Fig. 6).

Fig. 6



3. Place the water tank with lid (C) back onto the appliance making sure it is fitted properly.
4. Open the lid (B) by lifting the release lever (A).
5. For ground coffee brewing: use the ground coffee holder (O), then fill it with ground coffee up to the MAX fill line and place inside the insert holder (N).
6. For capsule coffee brewing: insert a suitable K-cup capsule into the capsule holder (P), then place inside the insert holder (N).
7. Close the lid (B) by pressing down the release lever (A) until it clicks.
8. Adjust the height of the cup holder (J) according to the size of your cup/mug. Small cup/mug should use the upper drip tray mounting slots (I), and larger cup/mug use the lower position (Fig. 7).
9. Place a cup/mug in the center of the cup holder (J).

Fig. 7



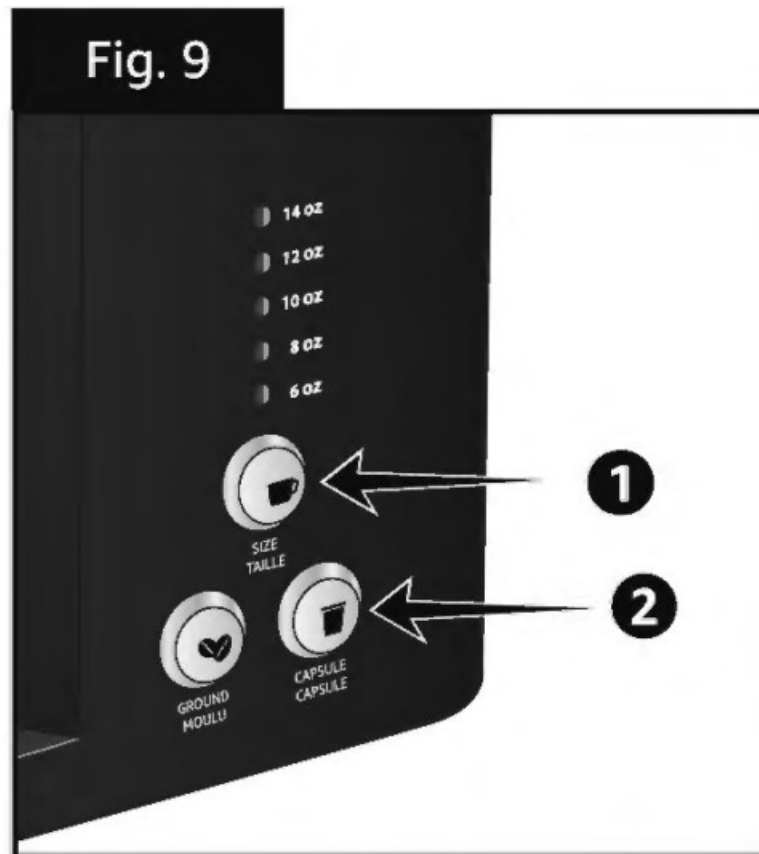
10. Connect the plug (L) to a suitable socket outlet. All indicator lights flash 3 times then switches off. The appliance is now in standby mode (Fig. 8).

Fig. 8



11. Adjust the strength of the brew by pressing the cup SIZE button (F) and toggle between 6 – 14 oz (Fig. 9).
- NOTICE** If there is no action within 30 seconds after the volume selection, all indicator lights will switch off and the appliance will revert to stand by mode.
12. Once the cup size has been selected, press either CAPSULE button (G) or GROUND button (H) to begin

brewing (Fig. 9). The selected brewing option button stays lit.



13. Once brewing is complete, all indicator lights switches off. Disconnect the plug (L) from the socket outlet.

NOTICE The brewing process can be stopped at any time by either pressing the CAPSULE button (G) or GROUND button (H) according to the type of coffee being brewed.

NOTICE During the brewing process, pressing the cup SIZE button (F) will not change any settings as the set volume cannot be modified after brewing has started.

NOTICE For brewing multiple cups, allow the appliance to cool down for 1 minute between each cycle and always ensure the water tank (C) is topped up with fresh water each time.

NOTICE If the water tank (C) is empty from the start or empties during the brewing cycle, the appliance will automatically stop heating and all indicator lights switches off. Once water has been refilled, the unit will take 2-3 minutes to start brewing again.

14. Allow the appliance to cool down before removing the ground coffee holder (O)/capsule holder (P) from the insert holder (N). Remove with caution as recently used coffee grounds or capsules can be hot.

5.2 Brewing tips

NOTICE

A small proportion of water is absorbed by the dry coffee. The amount of coffee brewed will always be slightly less than water which was added at the beginning.

- Always use fresh cold drinking water when filling up the water tank (C).
- Empty the drip tray (K) after each use to prevent it from overflowing (Fig. 10).

Fig. 10



- Do not reuse coffee grounds.
- Store unused coffee grounds and capsules in a cool, dry place. After opening, reseal the coffee tightly to maintain freshness.
- Clean all accessories after each use.

Cleaning and Maintenance

⚠ WARNING

Risk of electric shock!

- To prevent electric shock, unplug the appliance before cleaning.
- During cleaning do not immerse the electrical parts of the appliance in water or other liquids. Never hold the appliance under running water.

⚠ CAUTION

Risk of burns

- The appliance is hot during and after operation. Allow the appliance to cool down before cleaning and maintenance.

6.1 Cleaning

- Wipe the exterior of the appliance with a soft, slightly moist cloth after each use.
- Remove the drip tray (K) with cup holder (J), ground coffee holder (O) and capsule holder (P) from the appliance, then wash in warm soapy water. Allow these parts to dry before assembly.

- Wipe the seals on the underside of the lid (B) and the insert holder (N) with a damp cloth. Do not remove the seal.
- Wipe the nozzle with a damp cloth.
- Never use corrosive detergents, wire brushes, abrasive scourers, metal or sharp utensils to clean the appliance.

6.2 Descaling

Descale the appliance regularly. The intervals depend mainly on your household's water hardness and the frequency of use. Only use commercially available descaling agents and follow the manufacturer's instructions.

1. Remove the water tank and lid (C) from the appliance.
2. Fill the water tank with 5-15 oz (150 – 440 ml) of vinegar solution or household descaler, then add water up to the Max level as indicated on the water level gauge (D).
3. Place the lid back onto the water tank (C) and put the water tank back on the appliance.
4. Ensure the ground coffee holder (O) is placed in the insert holder (N) without coffee and the release lever (A) is placed in the lock position.
5. Place the drip tray (K) with cup holder (J) on the lower mounting slots.
6. Place a large mug onto the cup holder (J). Ensure it sits flat.
7. Connect the plug (L) to a suitable socket outlet. All indicator lights flash 3 times then switches off.
8. Press both the CAPSULE and GROUND buttons (G, H) at the same time until their indicator lights switch on and flash. The appliance will start pumping water.
9. Once the descaling cycle has finished, the appliance and the indicator lights automatically switches off.
NOTICE The appliance will run for 5 cycles of 24 seconds each, alternating water pumping and resting time during each cycle.
 Do not press any buttons, or try to interrupt the process during the descaling cycle.
10. Rinse the appliance by brewing 14 oz of fresh water at least 3 times afterwards without coffee placed in the ground coffee holder (O). Discard the water after each cycle.
11. Disconnect the plug (L) from the socket outlet.

6.3 Storage

- Store the appliance in its original Packaging in a dry area. Keep away from children and pets.
- Clean and dry all parts before storage.

6.4 Maintenance

Any other servicing than mentioned in this manual should be performed by a professional repair center.

Troubleshooting

Problem	Possible cause	Solution
The appliance does not switch on.	Appliance not plugged in. No power from the outlet	Check if the power plug (L) is connected to the socket outlet and switched on. Check if the outlet works.
No water comes out from the nozzle (M).	Nozzle is blocked. Excessive lime scale build up. Ground coffee too fine. Capsule type not suitable Water tank (C) is empty. Upper/bottom of the capsule not pierced by the needle.	Clean the nozzle (M) and remove any blockages. Clean and descale the appliance as described in chapter 6.2: Descaling. Clean the ground coffee holder (O) and refill with coarse ground coffee. Replace the current capsule with a suitable K-cup capsule. Refill the water tank (C) with fresh water. Switch the appliance off and carefully replace the capsule.
Brewing cycle stops before completion.	Lid (8) opened during brewing cycle. Water tank (C) is empty.	Close the lid (B) and wait for the indicator lights to switch off and restart brewing process. Refill the water tank (C) with fresh water. Brewing will resume after 2-3 minutes after refilling.
Coffee flavor is weaker than expected.	Not enough ground coffee. Too much water used Ground coffee/ capsule used more than once.	Add more ground coffee. Do not fill over the MAX fill line on the ground coffee holder (O). Reduce the amount of water used on the next brewing cycle. Clean the ground coffee holder (O) or discard the old capsule and use a new one.
Appliance is leaking during brewing cycle	Damaged ground coffee holder(O)/ capsule holder(P). Too much ground coffee inside the ground coffee holder (O). Ground coffee too fine. Capsule not suitable. Upper/bottom of the capsule not pierced by the needle.	Replace with suitable ground coffee holder/capsule holder. Remove some ground coffee from ground coffee holder (O). Ensure its lid (B) is properly closed. Clean the ground coffee holder (O) and refill with coarse ground coffee. Replace with a suitable capsule. Switch the appliance off and carefully replace the capsule.

Specifications

Model number	AB-1178B
Rated voltage	120 V AC 60 Hz
Rated current	10A
Power consumption	1200 W
Capsule size (height, lid diameter, bottom diameter)	approx. 1.5 x 2 x
Water tank capacity	6 – 24 oz (177 –
Brew size capacity	6 – 14 Oz (177 –
Net weight	approx. 4.63 lbs
Dimensions (W x H x D)	approx. 5.98 x 14

Feedback and Help

We would love to hear your feedback. To ensure we are providing the best customer experience possible, please consider writing a customer review.

Scan QR Code below with your phone camera or QR reader:



https://www.amazon.com/review/review-your-purchases/listing/?ref=431786_UM_CR

If you need help with your Amazon Basics appliance, please use the website or number below.



amazon.com/gp/help/customer/contact-us




+1 877-485-0385

amazon basics

amazon.com/AmazonBasics

MADE IN CHINA

V06-06/23

 <p>amazon basics</p> <p>Dual Brew Single Serve Capsule Coffee Maker Cafetière à Capsules à Double Usage à Dosage Individuel Programmable Modèle B08NTPSPNM</p> <p>Page 2 of 26</p>	<p>amazon basics B08NTPSPNM Dual Brew Single Serve Capsule Coffee Maker [pdf] User Guide</p> <p>B08NTPSPNM Dual Brew Single Serve Capsule Coffee Maker, B08NTPSPNM, Dual Brew Single Serve Capsule Coffee Maker, Brew Single Serve Capsule Coffee Maker, Single Serve Capsule Coffee Maker, Serve Capsule Coffee Maker, Capsule Coffee Maker, Coffee Maker, Maker</p>
--	---

References

- [User Manual](#)