



# amazon basics B08NTPC986 Compact Dual Brew Single Serve Capsule Coffee Maker User Guide

[Home](#) » [amazon basics](#) » amazon basics B08NTPC986 Compact Dual Brew Single Serve Capsule Coffee Maker User Guide 

## Contents

- [1 amazon basics B08NTPC986 Compact Dual Brew Single Serve Capsule Coffee Maker](#)
- [2 IMPORTANT SAFEGUARDS](#)
- [3 Product Description](#)
- [4 Before First Use](#)
- [5 Operation](#)
- [6 Cleaning and Maintenance](#)
- [7 Troubleshooting](#)
- [8 Specifications](#)
- [9 Documents / Resources](#)
- [10 Related Posts](#)

The Amazon Basics logo, featuring the word "amazon" in a bold, black, sans-serif font with a curved arrow underneath it, and the word "basics" in a smaller, black, sans-serif font to its right.

## amazon basics B08NTPC986 Compact Dual Brew Single Serve Capsule Coffee Maker



### IMPORTANT SAFEGUARDS

Read these instructions carefully and retain them for future use. If this appliance is passed to a third party, then these instructions must be included. When using electrical appliances, basic safety precautions should always be followed to reduce the risk of fire, electric shock, and/or injury to persons including the following:

**WARNING:** The exclamation point within equilateral triangle, is intended to alert the user to the presence of important operating and maintenance (servicing) instructions in the literature accompanying the appliance.

**WARNING:** The lightening flash with arrowed symbol, within equilateral triangle, is intended to alert the user to the presence of insulated “dangerous voltage” within the product’s enclosure that may be sufficient magnitude to constitute a risk of fire or electric shock to person.

1. Read all instructions.
2. Do not touch hot surfaces. Use handles or knobs.
3. To protect against fire, electric shock and injury to persons do not immerse cord, plugs, or appliance in water or other liquid.
4. Close supervision is necessary when any appliance is used by or near children.
5. Unplug from outlet when not in use and before cleaning. Allow to cool before putting on or taking off parts, and before cleaning the appliance.
6. Do not operate any appliance with a damaged cord or plug or after the appliance malfunctions, or has been damaged in any manner. Return appliance to the nearest authorized service facility for examination, repair or adjustment.
7. The use of accessory attachments not recommended by the appliance manufacturer may result in fire, electric shock or injury to persons.
8. Do not use outdoors.
9. Do not let cord hang over edge of table or counter, or touch hot surfaces.
10. Do not place on or near a hot gas or electric burner, or in a heated oven.
11. To disconnect, press either the CAPSULE or GROUND button, until the indicator light switches off, then

remove plug from wall outlet.

12. Do not use appliance for other than intended use.
13. Do not immerse in water.
14. Extreme caution must be used when moving an appliance containing liquids.
15. Do not open the release lever, the lid or remove the ground coffee holder/capsule holder during or immediately after use. Always exercise caution when opening the lid or removing the ground coffee holder/capsule holder after use. Hot steam might be trapped beneath.
16. Scalding may occur if the lid is opened during the brewing cycles.
17. To reduce the risk of fire, do not place any heating or cooking appliance beneath the appliance.
18. To reduce the risk of fire, do not store anything directly on top of the appliance surface when the appliance is in operation.
19. Only use capsules intended for this appliance. If the capsule does not fit, do not force the capsule into the appliance.
20. Do not use the appliance with an empty or under filled water tank. Ensure the water level is always between a minimum of 6 oz and a maximum of 14 oz. Do not fill the water tank over the Max marking. Drain excess water if needed.
21. Keep the area above the appliance clean and clear during use, as hot steam will escape from the appliance.
22. Do not use the appliance without a suitable cup/mug placed under the nozzle.
23. Do not use the appliance without the ground coffee holder/capsule holder.
24. This appliance has a polarized plug (one blade is wider than the other). To reduce the risk of electric shock, this plug is intended to fit into a polarized outlet only one way. If the plug does not fit fully into the outlet, reverse the plug. If it still does not fit, contact a qualified electrician. Do not attempt to modify the plug in any way.
25. Always use fresh and cold water for brewing. Do not fill the water tank with hot water, milk or other liquids for brewing.

SAVE THESE INSTRUCTIONS. HOUSEHOLD USE ONLY.

26. A short power-supply cord is to be provided to reduce risks resulting from becoming entangled in or tripping over a longer cord.
27. Extension cords are available and may be used if care is exercised in their use.
28. If an extension cord is used:
  - The marked electrical rating of the extension cord should be at least as great as the electrical rating of the appliance.
  - The longer cord should be arranged so that it does not drape over the counter top or table top where it can be pulled on by children or tripped over.

### **Intended Use**

- This appliance is intended for brewing ground or capsule coffee.
- This appliance is intended for household use only.
- This product is intended to be used in dry indoor areas only.
- No liability will be accepted for damages resulting from improper use or non-compliance with these instructions.\

## Product Description

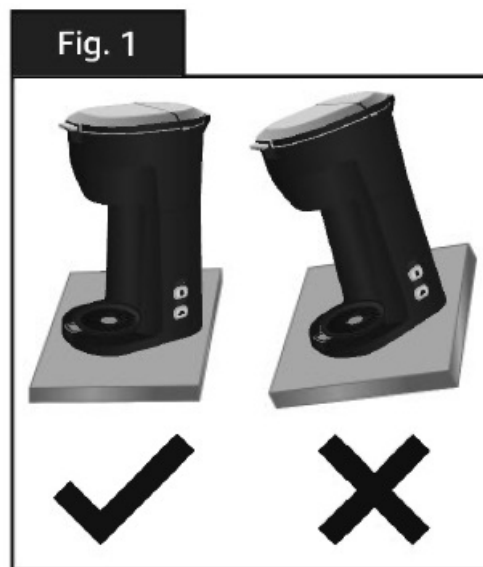


- A. Release lever
- B. Lid with needle and seal
- C. Flip top water tank
- D. Water level gauge (removable)
- E. CAPSULE button with indicator light
- F. GROUND button with indicator light
- G. Cup holder
- H. Drip tray
- I. Power cord with plug
- J. Nozzle
- K. Insert holder
- L. Ground coffee holder
- M. Capsule holder

## Before First Use

**NOTICE:** Make sure the flip top water tank (C) lid is closed firmly before switching on the appliance.

- Remove all the packing materials.
- Check the appliance and accessories for transport damages.
- Clean the appliance and accessories before first use.
- Place the appliance on a clean, flat and heat resistant surface (Fig. 1 ).



- Before connecting the appliance to the power supply, check that the power supply voltage and current rating corresponds with the power supply details shown on the appliance rating label.

### **Preparing the appliance**

- To clean the manufacturing residues, operate the appliance as described in chapter 5.1: Brewing coffee, but without coffee.
- Discard the water afterwards

### **Operation**

#### **CAUTION Risk of burns!**

- Do not operate the appliance without the lid (B) and flip top water tank (C) lid fully closed (Fig. 2).
- Do not remove the cup/mug until all indicator lights have switched off.
- During operation, the appliance produces hot steam. Keep clear of the area above the appliance at all times.
- There is extremely hot water in the capsule holder (M) during the brewing process. To avoid risk of injury, do not press the release lever (A) or open the top cover or water tank cover during the brewing process.

#### **CAUTION Risk of injury!**

- There are two sharp needles that puncture the coffee capsule. One is located under lid (B), and the other inside the bottom of the capsule holder (M)

Fig. 2



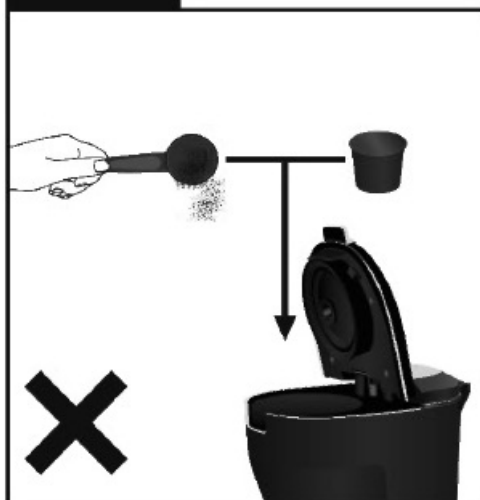
**NOTICE:** Choose the correct accessory for the type of brewing required (Fig. 3).

Fig. 3



**NOTICE:** Do not place ground coffee or capsule directly into the insert holder (K) (Fig. 4).

Fig. 4



**NOTICE:**

- Do not compress the ground coffee in the ground coffee holder (L).

- Do not use ground coffee for Espresso, as it is too fine and can clog the ground coffee holder (L).
- This product is intended to be used with K-Cup® style capsules. If defective or other style capsules are used the appliance may not operate properly. The appliance may leak or allow hot liquid or hot coffee to spill from the brewer. K-Cup® is a registered trademark of Keurig, Incorporated. Neither Amazon nor the amazon basics brand has any affiliation with Keurig, Incorporated. This product is not manufactured, distributed, licensed, or endorsed by Keurig, Incorporated.

## Brewing coffee

1. Open the flip water tank (C) lid and fill the water tank with cold drinking water. Fill water to your desired cup size, above the minimum level of 6 oz and not exceeding the Max level of 14 oz as indicated on the water level gauge (D).
2. Close the flip water tank (C) lid.
3. Open the lid (B) by pushing in the release lever (A).
4. For ground coffee brewing: use the ground coffee holder (L), then fill it with ground coffee up to the MAX fill line and place inside the insert holder (K).
5. For capsule coffee brewing: insert a suitable capsule into the capsule holder (M), then place inside the insert holder (K).
6. Close the lid (B) by pressing down the lid until the release lever (A) clicks and locks into place.
7. Place a cup/mug in the center of the cup holder (G) (Fig. 5).



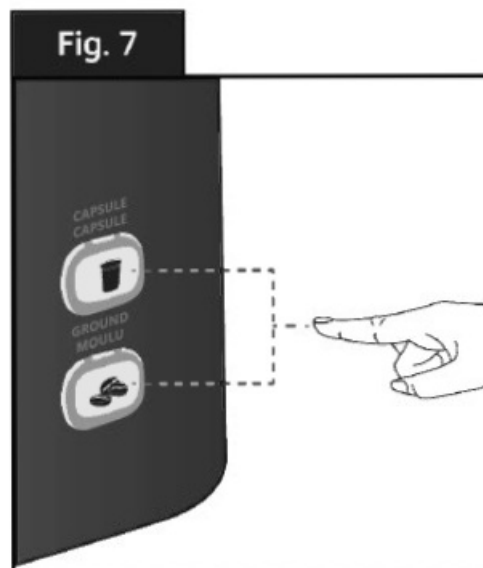
8. Connect the plug (I) to a suitable socket 8. Connect the plug (I) to a suitable socket.

Fig. 6



9. Press either CAPSULE button (E) or GROUND button (F) to begin brewing (Fig. 7). The selected brewing option button begins to flash, then stays lit.

Fig. 7



10. Once brewing is complete, all indicator lights switches off. Disconnect the plug (I) from the socket outlet.

**NOTICE:** The brewing process can be stopped at any time by either pressing the CAPSULE button (E) or GROUND button (F) according to the type of coffee being brewed.

**NOTICE:** For brewing multiple cups, allow the appliance to cool down for 1 minute between each cycle and always ensure the flip top water tank (C) is topped up with fresh water each time. If the flip top water tank (C) is empty from the start or empties during the brewing cycle, the appliance will automatically stop heating and all indicator lights switches off. Once water has been refilled, press the desired mode button to restart the brewing cycle.

11. Allow the appliance to cool down before removing the ground coffee holder (L)/capsule holder (M) from the insert holder (K). Remove with caution as recently used coffee grounds or capsules can be hot.

**NOTICE:** A small proportion of water is absorbed by the dry coffee. The amount of coffee brewed will always be slightly less than water which was added at the beginning.

- Always use fresh cold drinking water when filling up the flip top water tank (C).
- Empty the drip tray (H) after each use to prevent it from overflowing (Fig. 8).



**Fig. 8**



- Do not reuse coffee grounds.
- Store unused coffee grounds and capsules in a cool, dry place. After opening, reseal the coffee tightly to maintain freshness.
- Clean all accessories after each use.

## **Cleaning and Maintenance**

**WARNING:** Risk of electric shock!

- To prevent electric shock, unplug the appliance before cleaning.
- During cleaning do not immerse the electrical parts of the appliance in water or other liquids. Never hold the appliance under running water.

**CAUTION Risk of burns!**

- The appliance is hot during and after operation. Allow the appliance to cool down before cleaning and maintenance.

## **Cleaning**

- Wipe the exterior of the appliance with a soft, slightly moist cloth after each use.
- Remove the drip tray (H) with cup holder (G), ground coffee holder (L) and capsule holder (M) from the appliance, then wash in warm soapy water. Allow these parts to dry before assembly.
- Wipe the seals on the underside of the lid (B) and the insert holder (K) with a damp cloth.
- Do not remove the seal.
- Wipe the nozzle with a damp cloth.
- Never use corrosive detergents, wire brushes, abrasive scourers, metal or sharp utensils to clean the appliance.

## **Descaling**

**NOTICE:** Descale the appliance regularly. The intervals depend mainly on your household's water hardness and

the frequency of use. Only use commercially available descaling agents and follow the manufacturer's instructions.

1. Open the flip top water tank (C) lid.
2. Fill the water tank with 1-3 oz of vinegar solution or house hold descaler, then add water up to the Max level as indicated on the water level gauge (D).
3. Close the flip top water tank (C) lid.
4. Ensure the ground coffee holder (L) is placed in the insert holder (K) without coffee and the release lever (A) is locked into position.
5. Place the drip tray (H) with cup holder (G) on the recessed base.
6. Place a large mug onto the cup holder (G). Ensure it sits flat.
7. Connect the plug (I) to a suitable socket outlet. All indicator lights flash 3 times then switches off.
8. Press both the CAPSULE and GROUND buttons (E, F) at the same time. The appliance will start pumping water.
9. Once the descaling cycle has finished, the appliance and the indicator lights automatically switches off.

**NOTICE:**

- The appliance will run for 5 cycles of 30 seconds each, alternating water pumping and resting time during each cycle.
  - Do not press any buttons, or try to interrupt the process during the descaling cycle.
10. Rinse the appliance by brewing 8 oz of fresh water at least 3 times afterwards without coffee placed in the ground coffee holder (L). Discard the water after each cycle.
  11. Disconnect the plug (I) from the socket outlet.

## **Storage**

- Store the appliance in its original packaging in a dry area. Keep away from children and pets.
- Clean and dry all parts before storage.

## **Maintenance**

Any other servicing than mentioned in this manual should be performed by a professional repair center.

## **Troubleshooting**

Brewing cycle stops before completion.	t	Lid (B) opened during brewing cycle.	t	Close the lid (B) and restart brewing process.
	t	Flip top water tank (C) is empty.	t	Refill the flip top water tank (C) with fresh water. Press the desired mode button to restart the brewing cycle.
Coffee flavor is weaker than expected.	t	Not enough ground coffee.	t	Add more ground coffee. Do not fill over the <b>MAX</b> fill line on the ground coffee holder (L).
	t	Too much water used	t	Reduce the amount of water used on the next brewing cycle.
	t	Ground coffee/ capsule used more than once.	t	Clean the ground coffee holder (L) or discard the old capsule and use a new one.
Appliance is leaking during a brewing cycle	t	Damaged ground coffee holder(L)/ capsule holder(M).	t	Replace with suitable ground coffee holder/ capsule holder.
	t	Too much ground coffee inside the ground coffee holder (L).	t	Remove some ground coffee from ground coffee holder (L). Ensure its lid (B) is properly closed.
	t	Ground coffee too fine.	t	Clean the ground coffee holder (L) and refill with coarse ground coffee.
	t	Capsule not suitable.	t	Replace with a suitable capsule.
	t	Upper/bottom of the capsule not pierced by the needle.	t	Switch the appliance off and carefully replace the capsule.

## Specifications


- Model number AB-1179RB
- Rated voltage 120V AC 60 Hz
- Rated current 8.3A
- Power consumption 1000 W
- Capsule size (height, lid diameter, bottom diameter) approx. 1.5 x 2 x 1.5" (3.81 x 5.08 x 3.81 cm)
- Capacity 6-14 oz (180-410 ml)
- Net weight approx. 2.43 lbs (1.10 kg)
- Dimensions (W x H x D) approx. 5.32 x 11.99 x 8.15" (13.51 x 30.45 x 20.70 cm)

## Feedback and Help

We would love to hear your feedback. To ensure we are providing the best customer experience possible, please consider writing a customer review. If you need help with your Amazon Basics appliance, please use the website or number below.

[amazon.com/gp/help/customer/contact-us](https://www.amazon.com/gp/help/customer/contact-us)

Documents / Resources

	<p><a href="#">amazon basics B08NTPC986 Compact Dual Brew Single Serve Capsule Coffee Maker</a> [pdf]</p> <p>] User Guide</p> <p>B08NTPC986 Compact Dual Brew Single Serve Capsule Coffee Maker, B08NTPC986, Compact Dual Brew Single Serve Capsule Coffee Maker, Dual Brew Single Serve Capsule Coffee Maker, Brew Single Serve Capsule Coffee Maker, Single Serve Capsule Coffee Maker, Serve Capsule Coffee Maker, Capsule Coffee Maker, Coffee Maker, Maker</p>
---	---