

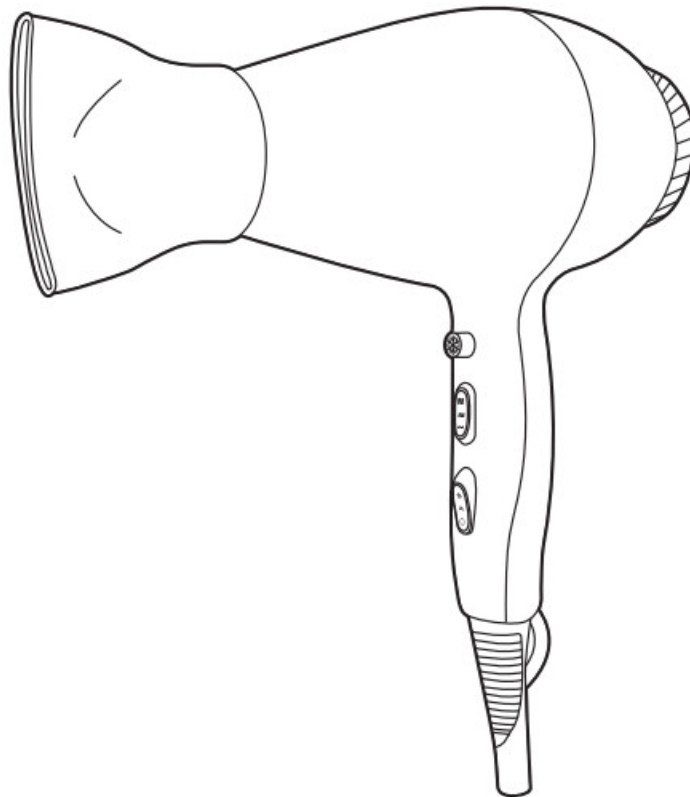


amazon basics B08GDB2R3B Compact And Fast Hair Dryer User Guide

[Home](#) » [amazon basics](#) » amazon basics B08GDB2R3B Compact And Fast Hair Dryer User Guide 

amazon basics

Compact and Fast Hair Dryer
B08GDB2R3B, BOBGD6QDHG



Contents

- 1 Important Safety Instructions
- 2 Product Description
- 3 Intended Use
- 4 Before First Use
- 5 Operation
- 6 Cleaning and Maintenance
- 7 Disposal
- 8 Troubleshooting
- 9 Specifications
- 10 Feedback and Help
- 11 Documents / Resources
 - 11.1 References

Important Safety Instructions



Read these instructions carefully and retain them for future use. If this product is passed to a third party, then these instructions must be included.

When using electrical appliances, basic safety precautions should always be followed to reduce the risk of fire, electric shock, and/ or injury to persons including the following:



WARNING

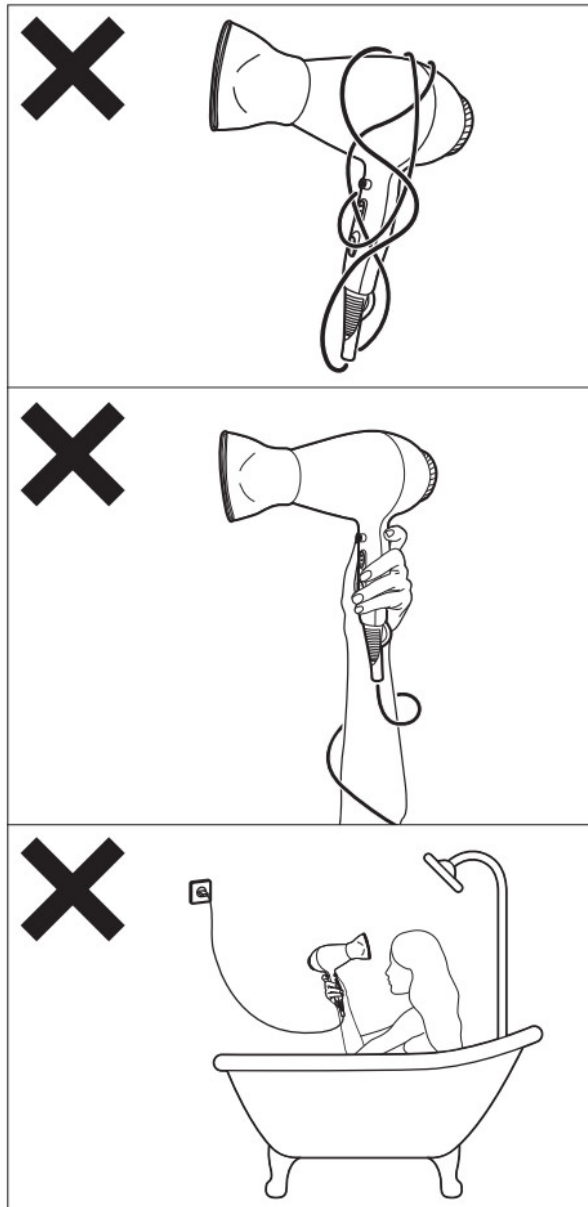
- Do not use this appliance near bathtubs, showers, basins or other vessels containing water.



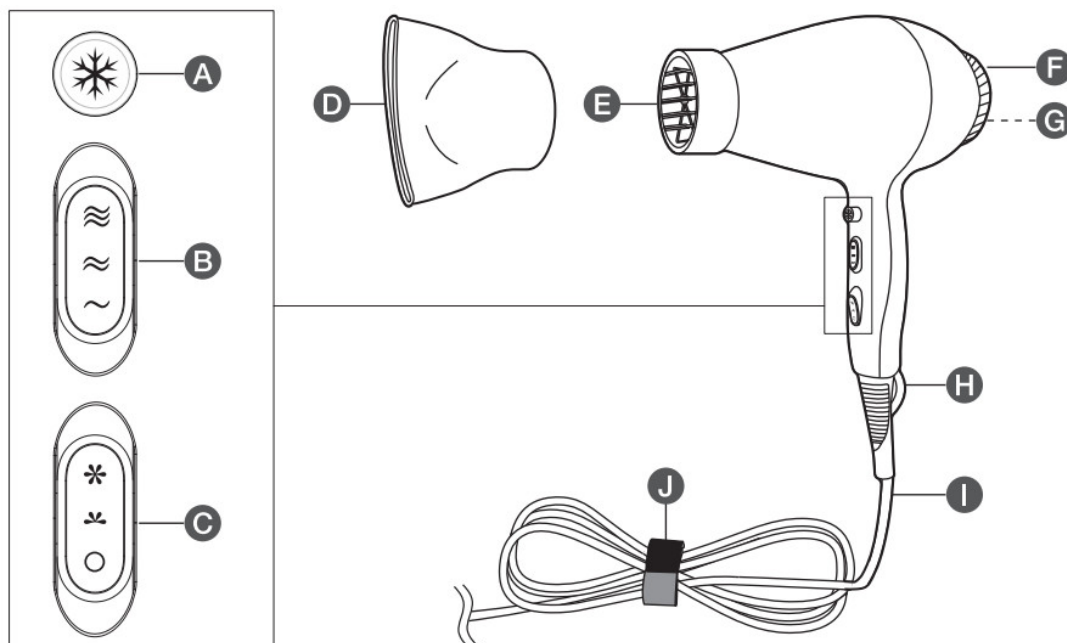
This symbol indicates that device should not be placed in a bathtub, shower, or water-filled reservoir.

- This appliance can be used by children aged from 8 years and above and persons with reduced physical, sensory or mental capabilities or lack of experience and knowledge if they have been given supervision or instruction concerning use of the appliance in a safe way and understand the hazards involved. Children shall not play with the appliance. Cleaning and user maintenance shall not be made by children without supervision.
- When the hairdryer is used in a bathroom, unplug it after use since the proximity of water presents a hazard even when the appliance is switched off.
- For additional protection, the installation of a residual current device (RCD) having a rated residual operating current not exceeding 30 mA is advisable in the electrical circuit supplying the bathroom. Ask a qualified installer for advice.
- The appliance must be fixed so that the hand-held part, when fully extended, is out of reach of a person taking a bath or shower.
- If the supply cord is damaged, it must be replaced by the manufacturer, its service agent or similarly qualified persons in order to avoid a hazard.
- Do not leave the appliance unattended when switched on.
- Do not wrap the cord around the appliance immediately after use. Let the appliance cool down.
- In use, take care that the inlet and outlet grilles are not blocked in any way as this causes the appliance to automatically stop. Should this occur, switch off and allow the appliance to cool down. Ensure the inlet grille is free from obstructions such as household fluff, loose hair etc.
- Do not place the appliance on soft or flammable material e.g. carpet, bedding, towels, rugs etc.

- Do not direct the airflow towards the eyes or other sensitive areas.



Product Description



- A. Cool shot switch (❄️)
 B. Heat setting switch (〰️ / 〰️ / 〰️)
 C. Speed setting switch (○ / 🌀 / 🌀)
 D. Concentrator nozzle
 E. Outlet grille

- F. Inlet grille cover
 G. Inlet grille
 H. Hanging loop
 I. Power cord with plug
 J. Cord wrap

Intended Use

- This product is intended for drying human hair. It is not intended for drying pet or animal hair.
- This product is intended for household use only.
- This product is intended to be used in dry indoor areas only.
- No liability will be accepted for damages resulting from improper use or non-compliance with these instructions

Before First Use

DANGER Risk of suffocation!

■ Keep any packaging materials away from children and pets — these materials are a potential source of danger, e.g. suffocation.

- Remove all the packing materials.
- Remove and review all components before use.
- Check the product for transport damages.
- Before connecting the product to the power supply, check that the power supply voltage and current rating corresponds with the power supply details shown on the product rating label.

Operation

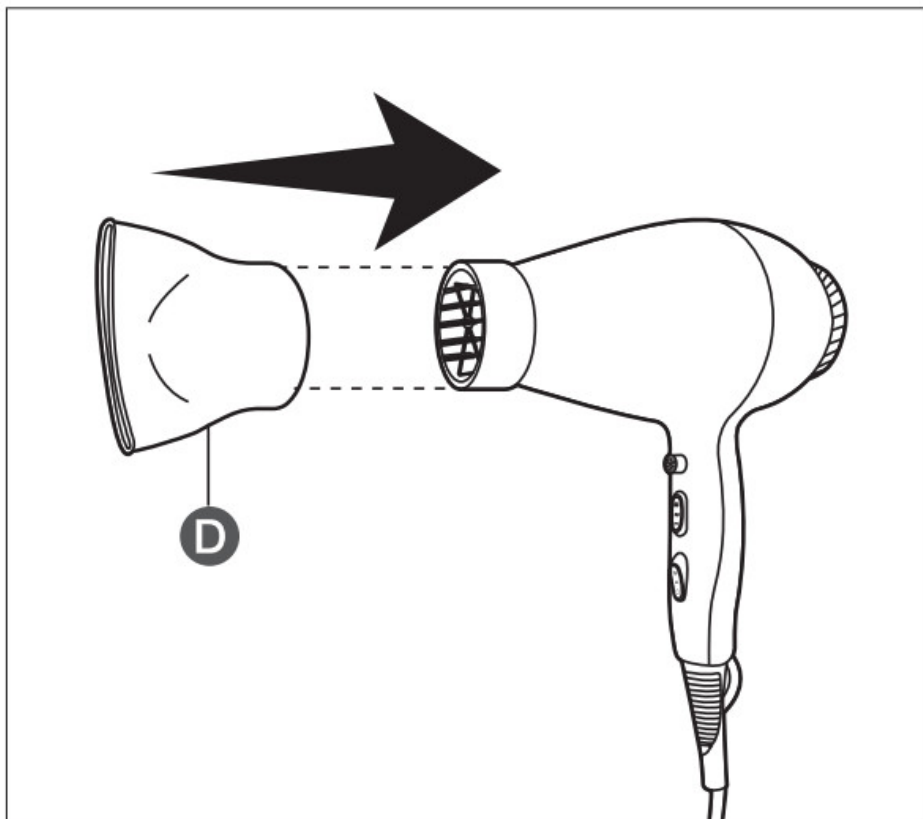
NOTICE

For more precision while drying, attach the concentrator nozzle (D) to the outlet grille (E).

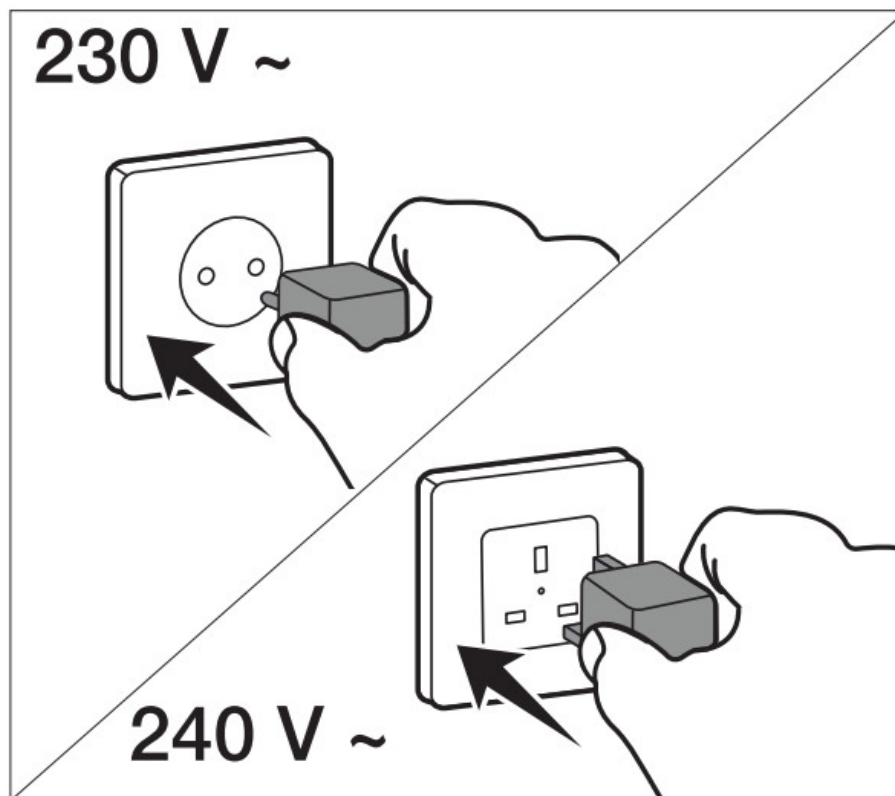
1. Towel dry the hair first.



2. Attach the concentrator nozzle (D), if needed.



3. Connect the plug (I) to a suitable socket-outlet.



4. Set the speed setting switch (C) to the desired airflow.

✿ gentle airflow for styling

* strong airflow for quick drying

5. Set the heat setting switch (B) to the desired temperature.

~ cool for fixing hairstyle

≈ warm for less hair damage

≈ hot for quick drying

NOTICE

While in the ≈ or ≈ heat setting, press and hold the cool shot switch * (A) for a cool shot of air to set the hair. Release the cool shot switch * (A) to stop.



6. After use, set the speed setting switch (C) to , then unplug the product.

- Cool air is for locking the styled hair into place. After getting your hair to the shape that you want, use cool air to set the style. This step seals the cuticle of the hair shaft and gives a smooth, shiny finish, allowing the style to stay in shape for longer.
- To create more volume, dry from the hair roots, then upwards using the concentrator nozzle (D).
- For frizzy, fluffed out curls, scrunch the hair while drying.
- For defined curls, start drying your hair while it is soaking wet.

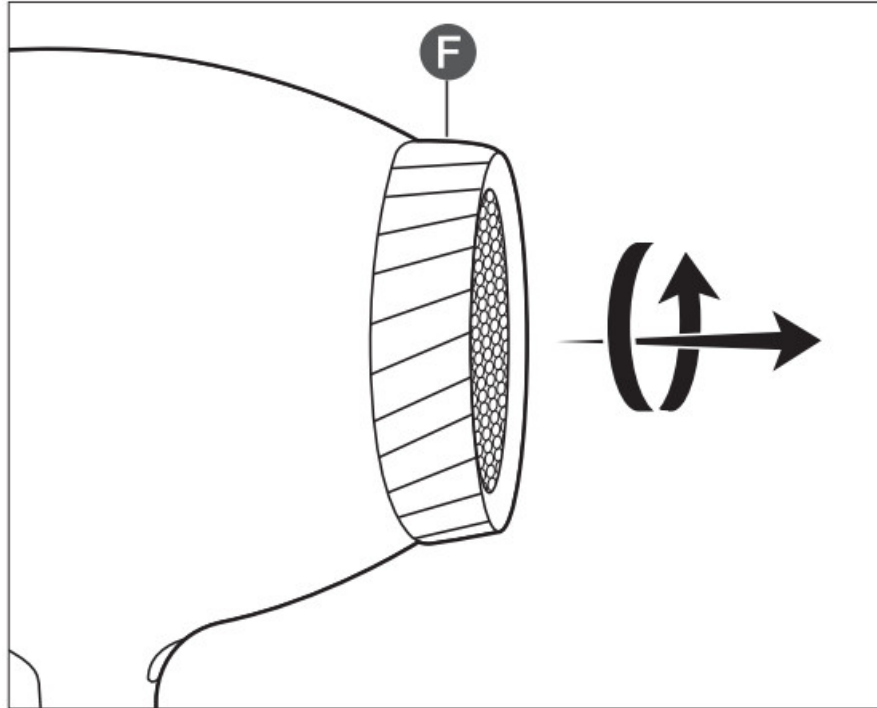
Cleaning and Maintenance

WARNING Risk of electric shock!

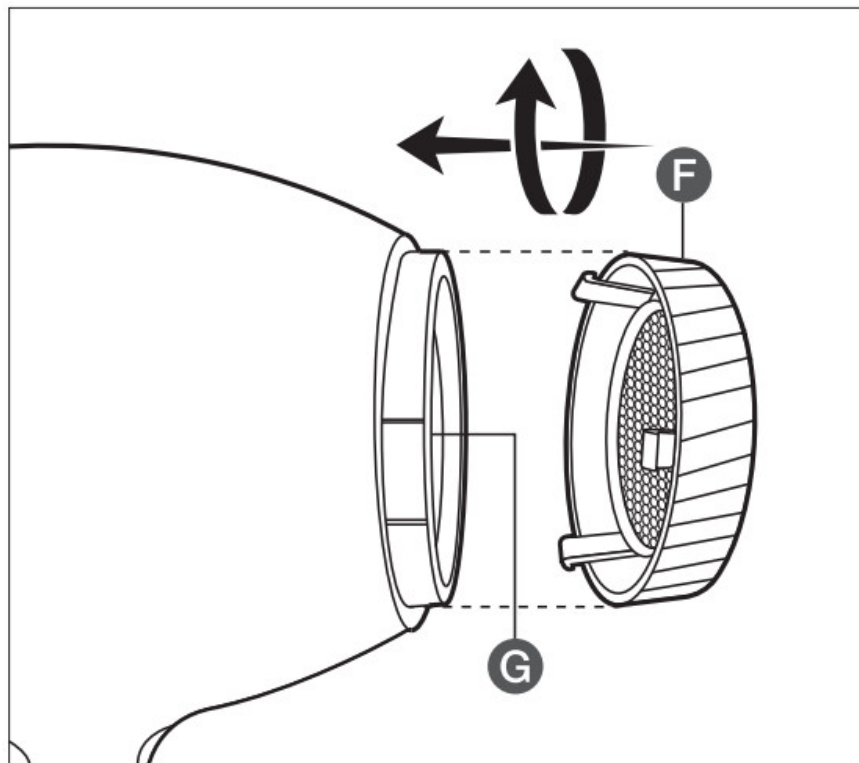
- To prevent electric shock, unplug the product before cleaning.
- During cleaning do not immerse the electrical parts of the product in water or other liquids. Never hold the product under running water.

7.1 Cleaning

1. Remove the inlet grille cover (F) by rotating it anti-clockwise.



2. Remove any of the obstructions (e.g. household fluff, loose hair).
3. Rotate the inlet grille cover (F) clockwise to fit it back on the product.

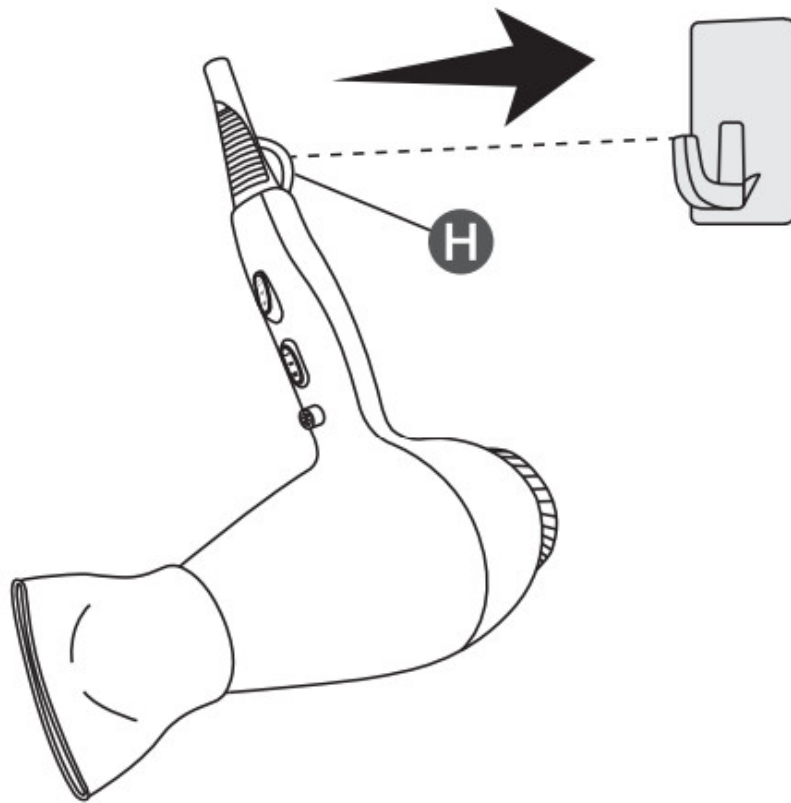


- To clean the product, wipe with a soft, slightly moist cloth.
- Wipe the product dry after cleaning.
- Never use corrosive detergents, wire brushes, abrasive scourers, metal or sharp utensils to clean the product.

7.2 Storage

- Allow the product to cool down before storage.

- Store the product in its original packaging in a dry area or hang the product by the hanging loop (H). Keep away from children and pets.



7.3 Maintenance

- Any other servicing than mentioned in this manual should be performed by a professional repair centre.

Disposal



The Waste Electrical and Electronic Equipment (WEEE) Directive aims to minimise the impact of electrical and electronic goods on the environment, by increasing re-use and recycling and by reducing the amount of WEEE going to landfill. The symbol on

this product or its packaging signifies that this product must be disposed separately from ordinary household wastes at its end of life. Be aware that this is your responsibility to dispose of electronic equipment at recycling centers in order to conserve natural resources. Each country should have its collection centers for electrical and electronic equipment recycling. For information about your recycling drop off area, please contact your related electrical and electronic equipment waste management authority, your local city office, or your household waste disposal service.

Troubleshooting

Problem	Solution
The product does not switch on.	Check if the plug is connected to the socket outlet. Use voltage tester to verify if the socket outlet is powered.
For UK only: Fuse in the plug is blown.	Use a flat screwdriver to open the fuse compartment cover. Remove the fuse and replace with the same type (10 A, BS1362). Refit the cover.
A burning smell emits from the inside of the product.	Unplug the product immediately. Check that there are no obstructions blocking the inlet grille cover (F). If the problem remains, consult a certified electrician for repairs.
The product suddenly switches off.	<ul style="list-style-type: none"> ● There are obstructions blocking the inlet grille cover (F). Clear the blockage then try again. ● The product has switched off due to overheating. Wait for the product to cool down then try again.
A burning smell emits from the outside of the product.	<ul style="list-style-type: none"> ● Switch off the product immediately. The heat setting is too high and it is burning the hair. Set the heat to a lower setting to prevent burning the hair. Use high heat only for short durations. ● Switch off the product immediately. The product is left on while unattended. The product may have directed heat on a flammable object around.

Specifications

Model number	FDD-03106
Rated voltage	220-240 V-, 50/60 Hz
Power input	1850 – 2200 W
Protection class	Class II
Temperature range (with nozzle)	110 °C +/-15 °C
Temperature range (without nozzle)	100 °C +/-15 °C
Cord length	1.8 m
Net weight (without cord)	approx. 450 g
Dimensions (W x H x D)	approx. 25 x 28 x 10 cm

Feedback and Help

We would love to hear your feedback. To ensure we are providing the best customer experience possible, please consider writing a customer review.



[amazon.co.uk/review/review-your-purchases#](https://www.amazon.co.uk/review/review-your-purchases#)

If you need help with your AmazonBasics product, please use the website below,



[amazon.co.uk/gp/help/customer/contact-us](https://www.amazon.co.uk/gp/help/customer/contact-us)





amazon.com/AmazonBasics

MADE IN CHINA



V01-07/22

Documents / Resources

  <small>Compact and Fast Hair Dryer Sèche-Chveux Compact et Rapide Periploika, spindelna sušilica Periploikaletti Compacto e Rapido Secador de Pêlo Rápido e Compacto Compacto en Sècher Fàstic B08GDB2R3B, B08GDB2R3B</small> <table><tr><td>Page 1</td><td>Page 10</td></tr><tr><td>Page 2</td><td>Page 11</td></tr><tr><td>Page 3</td><td>Page 12</td></tr><tr><td>Page 4</td><td>Page 13</td></tr></table>	Page 1	Page 10	Page 2	Page 11	Page 3	Page 12	Page 4	Page 13	<p>amazon basics B08GDB2R3B Compact And Fast Hair Dryer [pdf] User Guide B08GDB2R3B Compact And Fast Hair Dryer, B08GDB2R3B, Compact And Fast Hair Dryer, Fast Hair Dryer, Hair Dryer, Dryer</p>
Page 1	Page 10								
Page 2	Page 11								
Page 3	Page 12								
Page 4	Page 13								

References

- [User Manual](#)

Manuals+ Privacy Policy

This website is an independent publication and is neither affiliated with nor endorsed by any of the trademark owners. The "Bluetooth®" word mark and logos are registered trademarks owned by Bluetooth SIG, Inc. The "Wi-Fi®" word mark and logos are registered trademarks owned by the Wi-Fi Alliance. Any use of these marks on this website does not imply any affiliation with or endorsement.