



# amazon basics B083KP221C Faucet Water Filter Instruction Manual

[Home](#) » [amazon basics](#) » amazon basics B083KP221C Faucet Water Filter Instruction Manual 

## Contents

- [1 basics B083KP221C Faucet Water Filter](#)
- [2 IMPORTANT SAFEGUARDS](#)
- [3 Product Description](#)
- [4 Installation](#)
- [5 Operation](#)
- [6 Troubleshooting](#)
- [7 Storage and Maintenance](#)
- [8 Specifications](#)
- [9 Performance Data Sheet](#)
- [10 Documents / Resources](#)
  - [10.1 References](#)



**basics B083KP221C Faucet Water Filter**



## IMPORTANT SAFEGUARDS

Read these instructions carefully and retain them for future use. If this product is passed to a third party, then these instructions must be included.

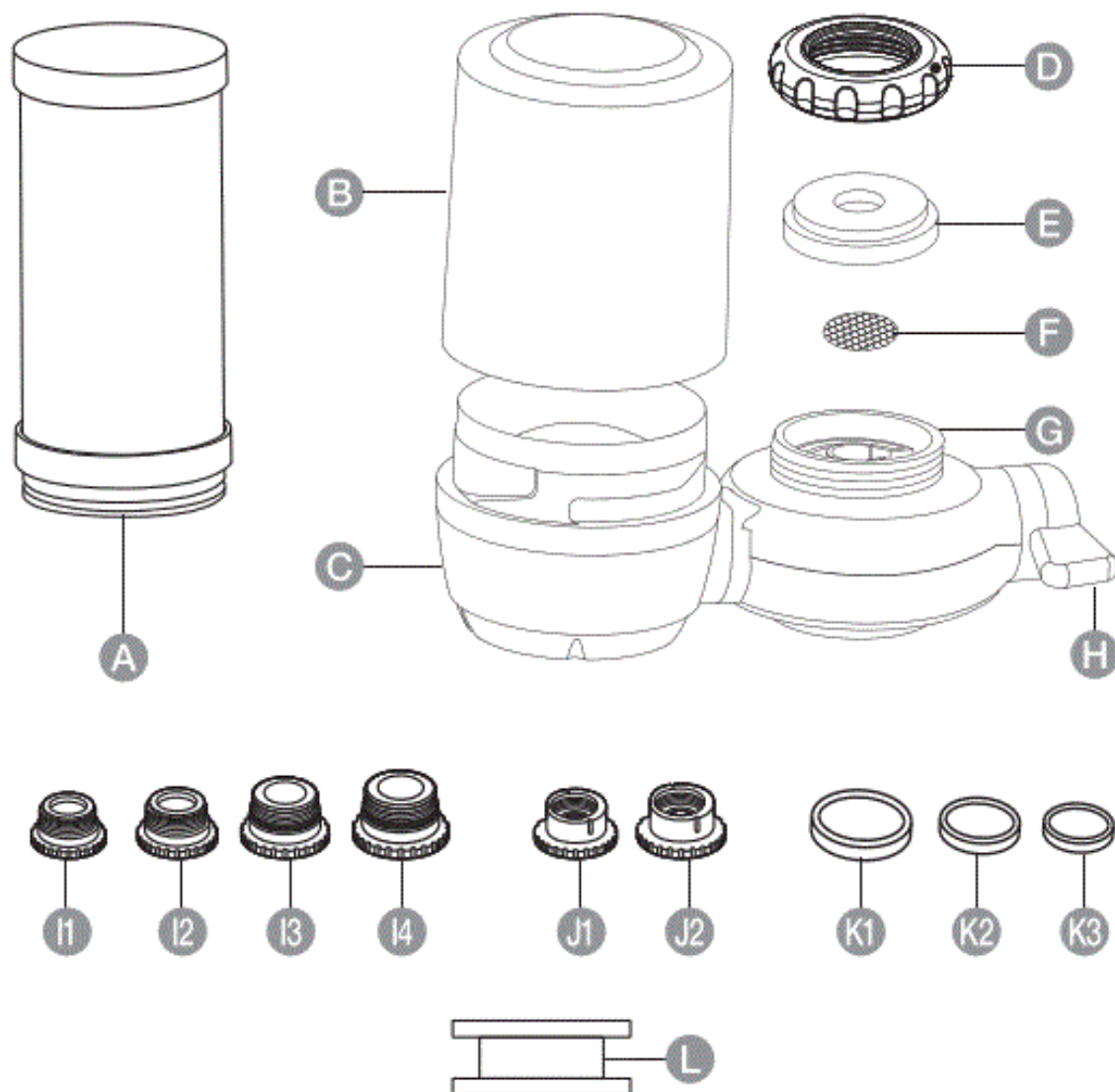
When using the product, basic safety precautions should always be followed to reduce the risk of injury including the following:

### Caution

Do not use water above 100 °F (38 °C). Do not use water that is microbiologically unsafe or of unknown quality without adequate disinfection before or after the system.

- To reduce the risk of property damage due to water leakage, this filter must be installed in accordance with the operating specifications and instructions.
- This filter unit must be replaced on a regular basis.
- Failure to follow instructions and operating specifications will void your warranty.
- Further, the manufacturer assumes no responsibility or liability for damages arising out of misuse of the product.
- Flush the system for 1 minute before use after a long time of non-use.
- Prior to each use, run water through the filter for 5 to 10 seconds to activate the filter.
- The filter system must be protected against freezing temperatures, frost, snow, sleet, and ice. Exposure to these elements can produce cracks and product failures.
- Do not touch the filtered water outlet to prevent bacterial growth.
- Do not use steel wire brushes or corrosive liquids to clean the product.
- Change the filter every 3 months or 320 gallons (1200 liters) for best filtration performance.

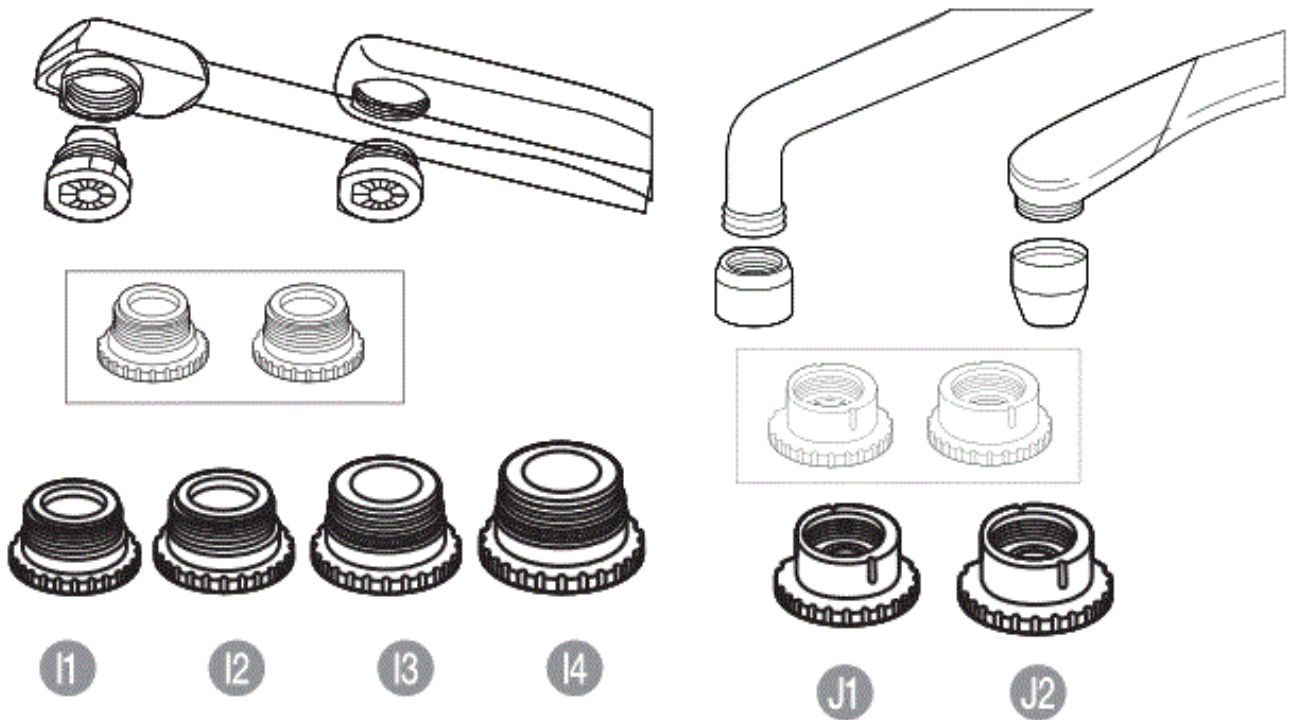
## Product Description



- A Activated carbon fiber (ACF) filter
- B Filter top cover
- C Filter base
- D Mounting nut
- E Silicon washer
- F Steel mesh
- G Mounting base
- H Lever
- I Lever
  - M18.5 (I1)
  - 13/16" (I2)
  - M21.5 (I3)
  - 15/16" (I4)
- J Adapter:
  - M18.5 (J1)
  - 55/64" (J2)
- Silicone washer
- Plumber's tape

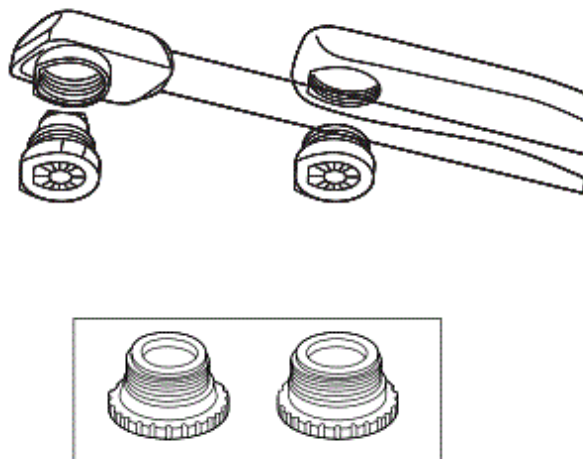
## Installation

### How to Choose the Right Adapter



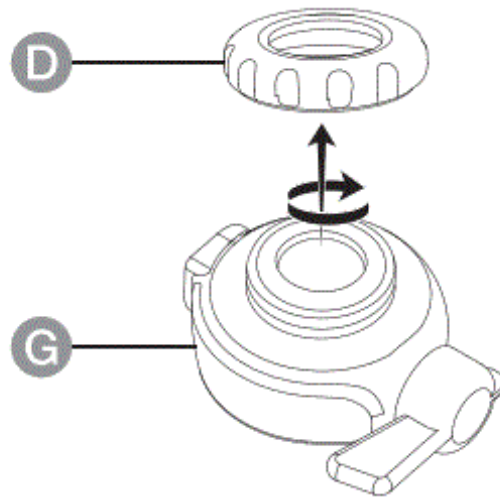
- (I2) fits most internal threaded faucets. If (I2) doesn't fit, try the other adapters.
- (J2) fits most external threaded faucets. If (J2) does not fit, try (J1).

### Step 1



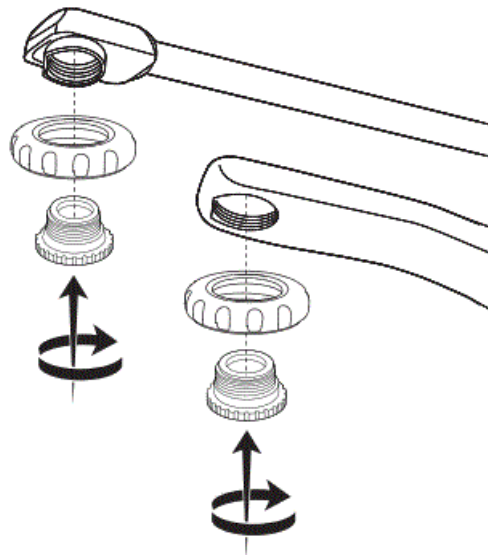
- Remove the original faucet aerator if there is an aerator in the faucet. Choose the right adapter to match the faucet threading, and choose the appropriate silicone washer (K).

### Step 2



- Unscrew the mounting nut (D) from the mounting base (G) by turning counterclockwise. Then put the mounting nut (D) on the faucet.

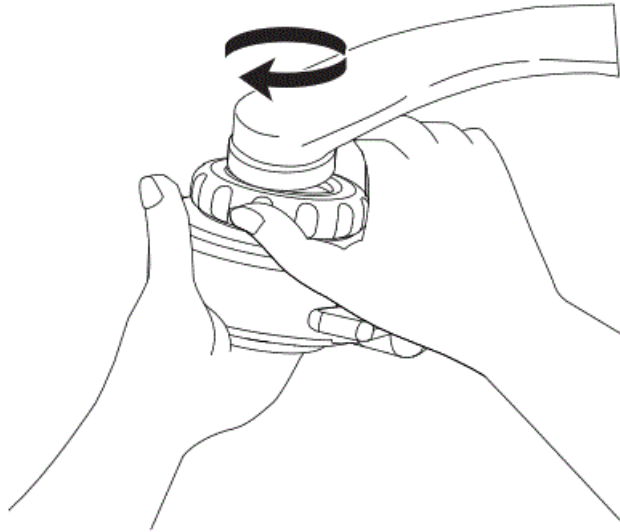
### Step3



- Put the silicon washer (12) into the chosen adapter. Then tighten the chosen adapter onto the faucet. Do not over-tighten.

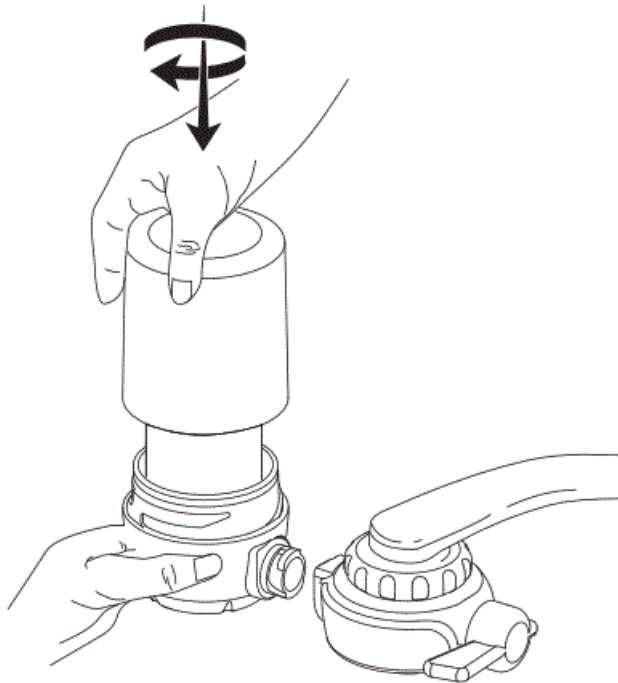
NOTICE | Make sure an appropriate silicon washer (K2) is installed into the chosen adapter to prevent water leakage.

### Step4



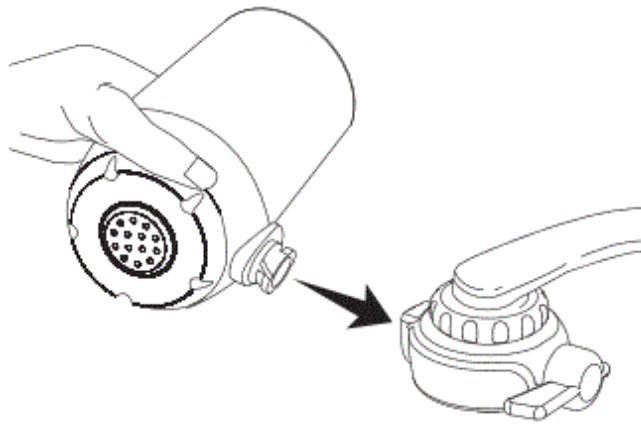
- Screw the mounting base (G) onto the mounting nut (D) firmly by turning clockwise.

#### Step 5



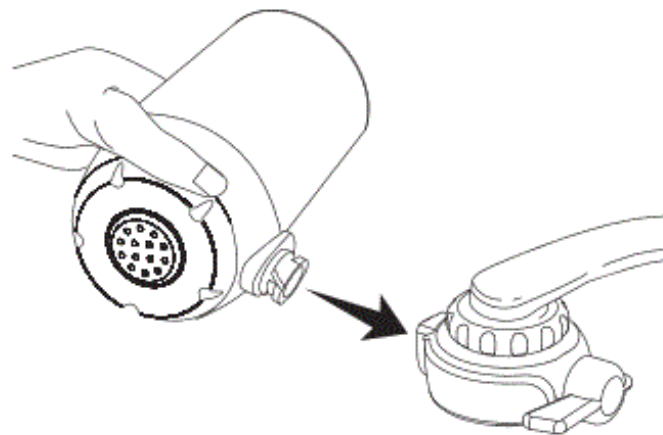
- Put it back into filter base (C). Twist the filter top cover (B) back to the filter base (C) securely.  
NOTICE I insert the filter firmly until it sits.

#### Step6



- Align the slot of filter base (C) with the slot of mounting base (G).

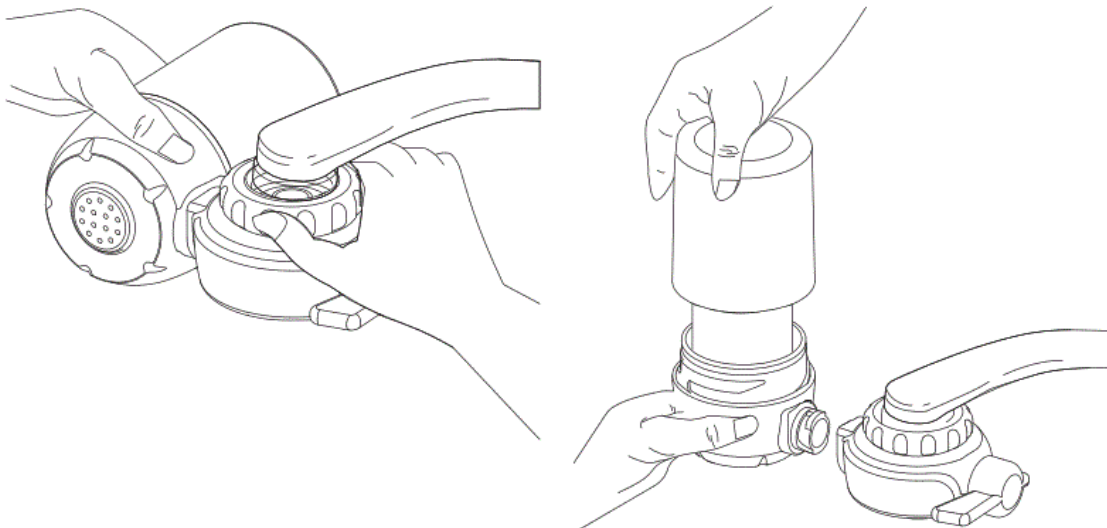
#### Step7



- Insert the filter base (C) into the mounting base (G) and rotate 90° upward.

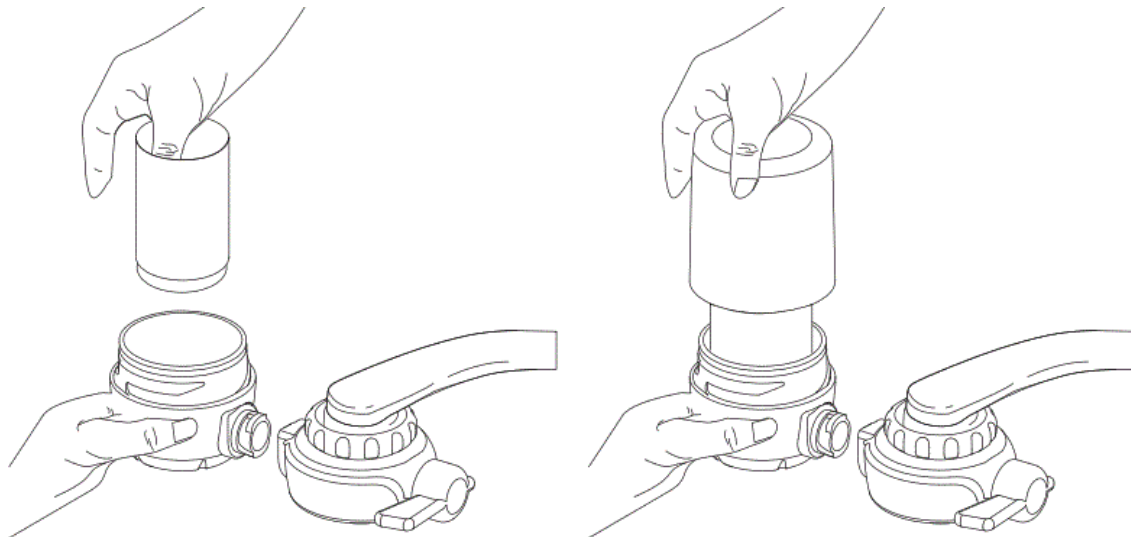
#### Filter Replacement

For optimum performance, it is highly recommended you use genuine faucet replacement water filter. It is also advisable to change your filter every 3 months or 320 gallons (1200 liters) to keep water fresh. Whichever comes first will vary based on water usage and water quality.



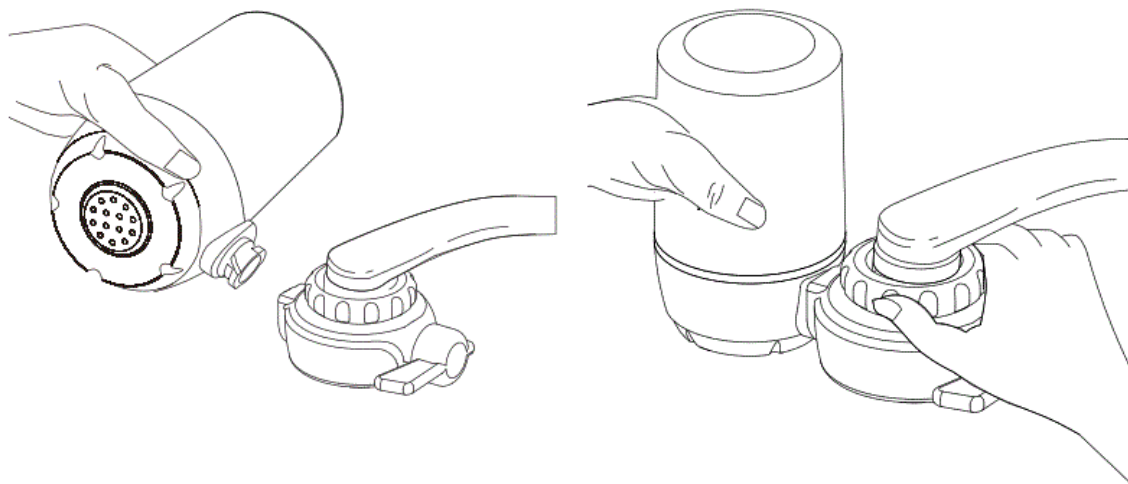
1. Twist the filter base (C) from the mounting base (G).

2. Twist the filter top cover (B) off and take out the old filter.



3. Insert new filter into the filter base (C).

4. Refit the filter top cover (B).



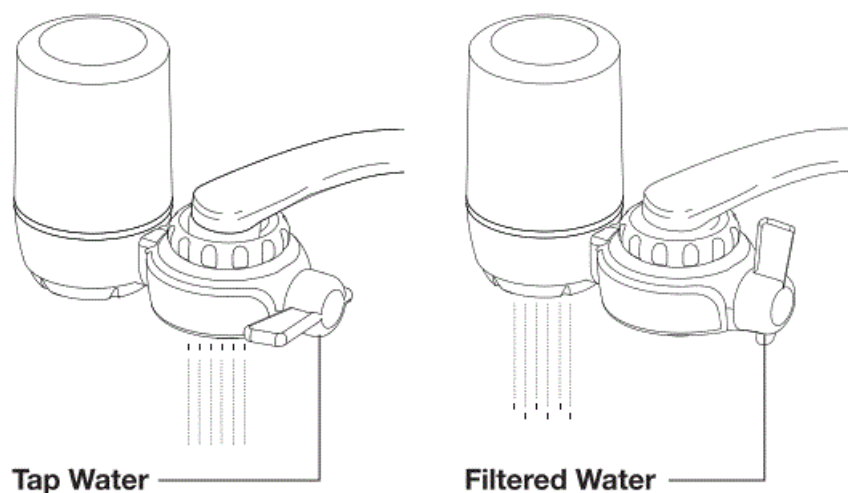
5. Align the slot of filter base (C) with the slot of mounting base (G).

6. Insert filter base (C) into the mounting base (G) and rotate 90° upward.

## Operation

### How to use

After installation, open the faucet. Switch the lever (H) to the “tap” position, and unfiltered water will run through. Switch the lever (H) to its “pure” position, and filtered water will run through.





- NOTICE I Before first use, run cold water for 1 minute in a “pure” position. Do not run hot water through the filter. During flush, it is normal to see cloudy water and hear the sound of water pushing air out of the filter.
- NOTICE I Check for leaks. If there is any leak, refer to the Troubleshooting section.
- NOTICE I Changed the lever (H) position slowly to avoid damage to the mounting base.

## Troubleshooting

Problem	Solution
Why does water leak between the mounting base and the faucet?	The filter may not have been installed properly, or the silicone washer may be damaged. Re-install the filter. Wrap plumber's tape around the joint of mounting base and the faucet. If it does not work, replace the silicone washer.
Why does the filtered water run quite slowly?	The filter may be clogged. Replace the filter.
Why does the unfiltered water run quite slowly?	There may be dirt in filter steel mesh. Clean the filter steel mesh.
Problem	Solution
Why does the water taste funny?	The filter is not installed appropriately, or it should be replaced. Re-install the filter in a correct way. If there is still bad taste, replace the filter.

## Storage and Maintenance

- Replace your filter every 3 months or 320 gallons (1200 liters) to prevent bacteria and fungus growth in your filter, supply lines, and storage tank.
- Keep your unused filter in a cool, dark, and dry place until you need them.



Tested and Certified by NSF International in Model AMZN-7029S against NSF/ANSI Standard 42 for the reduction of the claims specified on the Performance Data Sheet, and to NSF/ANSI 372 (:s;0.25% lead)

## Specifications

Model number:	AMZN-7029S
Replacement model number:	AMZN-7030
Rated capacity:	320 gallons (1200 liters)
Rated flow:	0.5 gpm / 1.9 lpm
Operating temperature:	41-100 °F (5-38 °C)
Operating working pressure:	20-100 psi / 1400 kPa-689 kPa

## Performance Data Sheet

- System Model No.: AMZN-7029S
- Replacement Filter Cartridge Model No.: AMZN-7030

Substance	Inf. Average	NSF Specified Challenge Concentration	Ave.% Reduction	Average Product Water Concentration
Chlorine Taste and Odor	2.0 mg/L	2.0 mg/L ± 10%	94.42%	0.11 mg/L

Substance	Max Permissible Product Water Concentration	NSF Reduction Requirements	NSF Test Report
-----------	---	----------------------------	-----------------

## Feedback and Help


Love it? Hate it? Let us know with a customer review.

AmazonBasics is committed to delivering customer-driven products that live up to your high standards. We encourage you to write a review sharing your experiences with the product.

- [amazon.com/review/review-your-purchases#](https://www.amazon.com/review/review-your-purchases#)
- [amazon.com/gp/help/customer/contact-us](https://www.amazon.com/gp/help/customer/contact-us)

[amazon.com/AmazonBasics](https://www.amazon.com/AmazonBasics)

## Documents / Resources

 <p>Faucet Water Filter Filter &amp; Dispenser System Filter on Aquapure Series B083KP221C</p>	<p><a href="#">amazon basics B083KP221C Faucet Water Filter</a> [pdf] Instruction Manual B083KP221C Faucet Water Filter, B083KP221C, Faucet Water Filter, Water Filter, Filter</p>
--	--

References

- [User Manual](#)