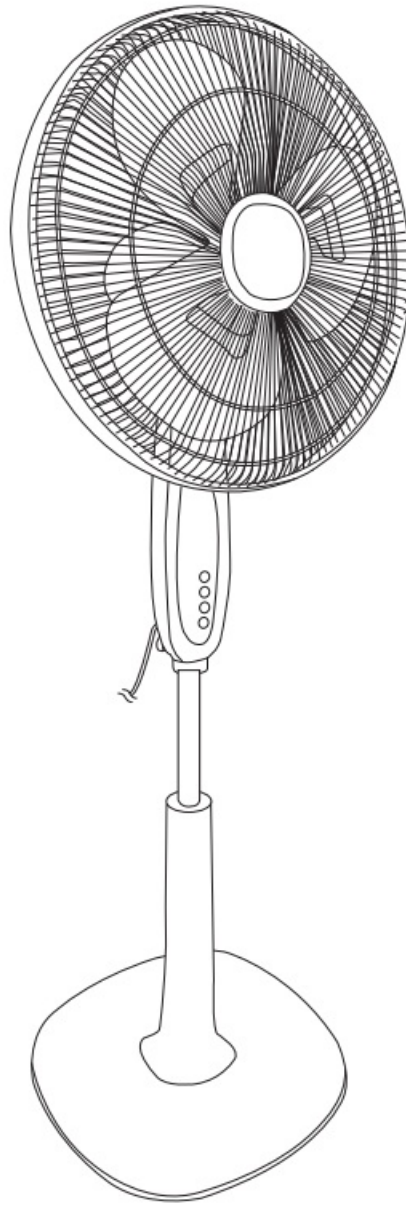




amazon basics B07VYMJ4TN Oscillating Digital Dual 3 Blades Standing Pedestal Fan With Remote Control Instruction Manual

[Home](#) » [amazon basics](#) » amazon basics B07VYMJ4TN Oscillating Digital Dual 3 Blades Standing Pedestal Fan With Remote Control Instruction Manual 

amazon basics



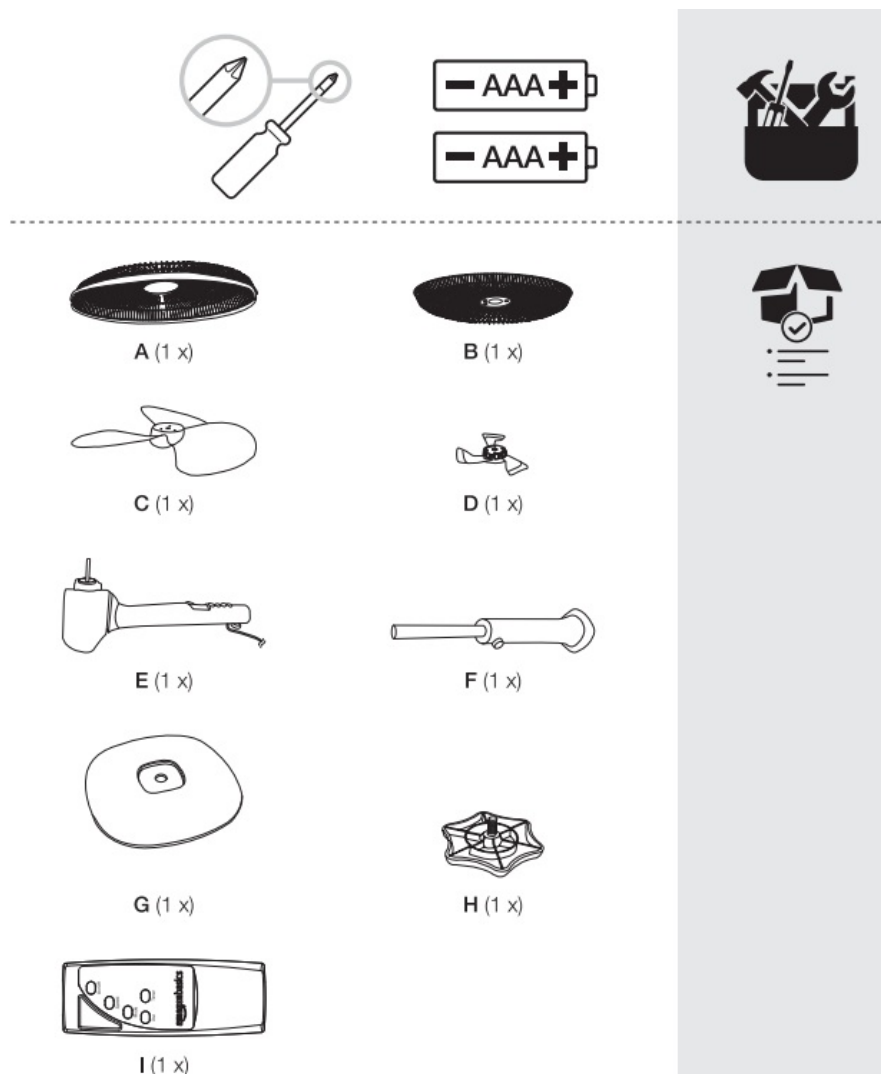
Oscillating Digital Dual 3 Blades Standing Pedestal Fan with Remote Control

B07VYMJ4TN, B07W1SGSJW

Contents

- [1 B07VYMJ4TN Oscillating Digital Dual 3 Blades Standing Pedestal Fan With Remote Control](#)
- [2 Battery Warnings](#)
- [3 Intended Use](#)
- [4 Assembly](#)
- [5 Operation](#)
- [6 Cleaning and Maintenance](#)
- [7 Troubleshooting](#)
- [8 Specifications](#)
- [9 Feedback and Help](#)
- [10 Documents / Resources](#)
 - [10.1 References](#)

B07VYMJ4TN Oscillating Digital Dual 3 Blades Standing Pedestal Fan With Remote Control



Read these instructions carefully and retain them for future use. If this product is passed to a third party, then these instructions must be included.

When using electrical appliances, basic safety precautions should always be followed to reduce the risk of fire, electric shock, and/or injury to persons including the following:

⚠ WARNING Risk of injury! Avoid contacting moving parts. Wait until all components have completely stopped before touching them.

- This appliance can be used by children aged from 8 years and above and persons with reduced physical, sensory or mental capabilities or lack of experience and knowledge if they have been given supervision or instruction concerning use of the appliance in a safe way and understand the hazards involved. Children shall not play with the appliance. Cleaning and user maintenance shall not be made by children without supervision.
- If the supply cord is damaged, it must be replaced by the manufacturer, its service agent or similarly qualified persons in order to avoid a hazard.
- Ensure that the fan is switched off from the supply mains before removing the guard.
- Never use the product without the safety guard or with a damaged safety guard.
- Place the fan on a stable, level surface during use.
- Unplug or disconnect the appliance from the socket outlet before servicing.

Battery Warnings

- Always insert batteries correctly with regards to polarity (+ and -) marked on the battery and the product.

- Exhausted batteries should be immediately removed from product and properly disposed.

Symbols Explanation



This symbol stands for “Conformité Européenne”, which declares “Conformity with EU directives, regulations and applicable standards”. With the CE-marking, the manufacturer confirms that this product complies with applicable European directives and regulation.



This symbol stands for “United Kingdom Conformity Assessed”. With the UKCA- marking, the manufacturer confirms that this product complies with applicable regulations and standards within Great Britain.



Intended Use

- This product is intended to produce a cooling airflow.
- This product is intended for household use only. It is not intended for commercial use. This product is intended to be used in dry indoor areas only.
- No liability will be accepted for damages resulting from improper use or non-compliance with these instructions.




Before First Use

- Check the product for transport damages.
- Remove all the packing materials.
- Before connecting the product to the power supply, check that the power supply voltage and current rating corresponds with the power supply details shown on the product's rating label.



DANGER Risk of suffocation! Keep any packaging materials away from children – these materials are a potential source of danger, e.g. suffocation.

Inserting batteries (remote control)

- Open the battery compartment.
- Insert two 1.5 V  AAA batteries (not included) in accordance with the polarity markings inside the battery compartment.
- Close the battery compartment.

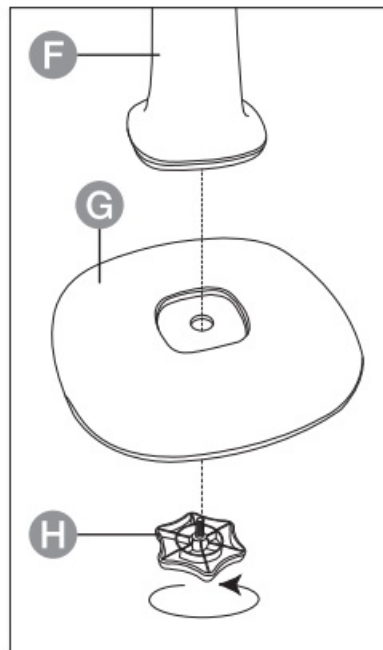


Assembly

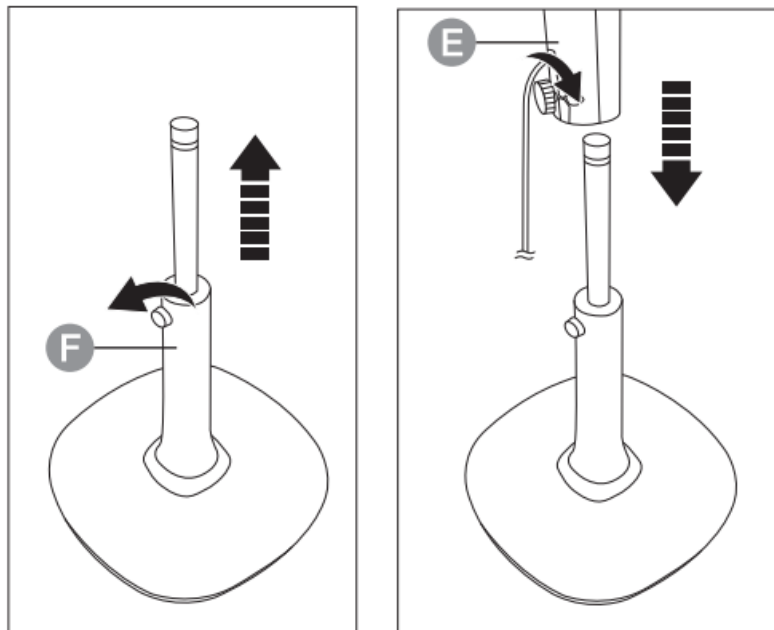
NOTICE Remove the protection bracket from the rear guard (B), and the protection sleeve from the main body's (E) pin.

Step 1:

- Connect the leg (F) with the base (G).
- Secure the connection with the knob screw (H).



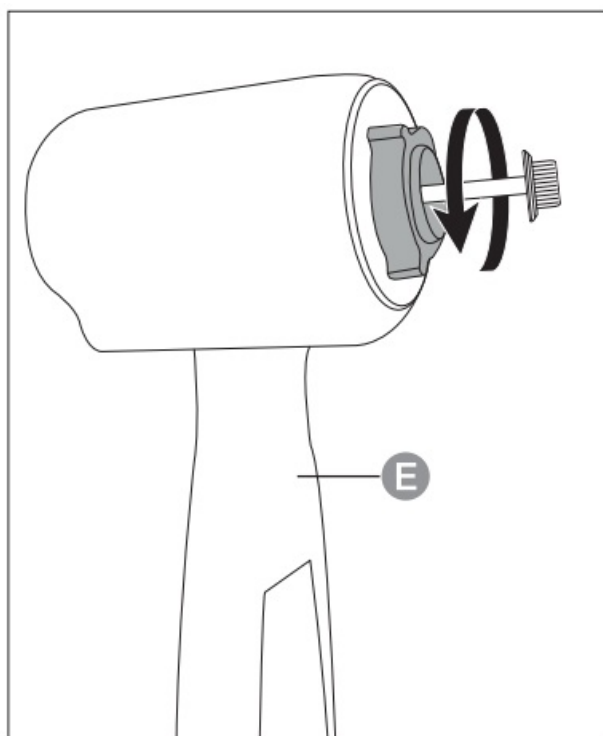
Step 2:



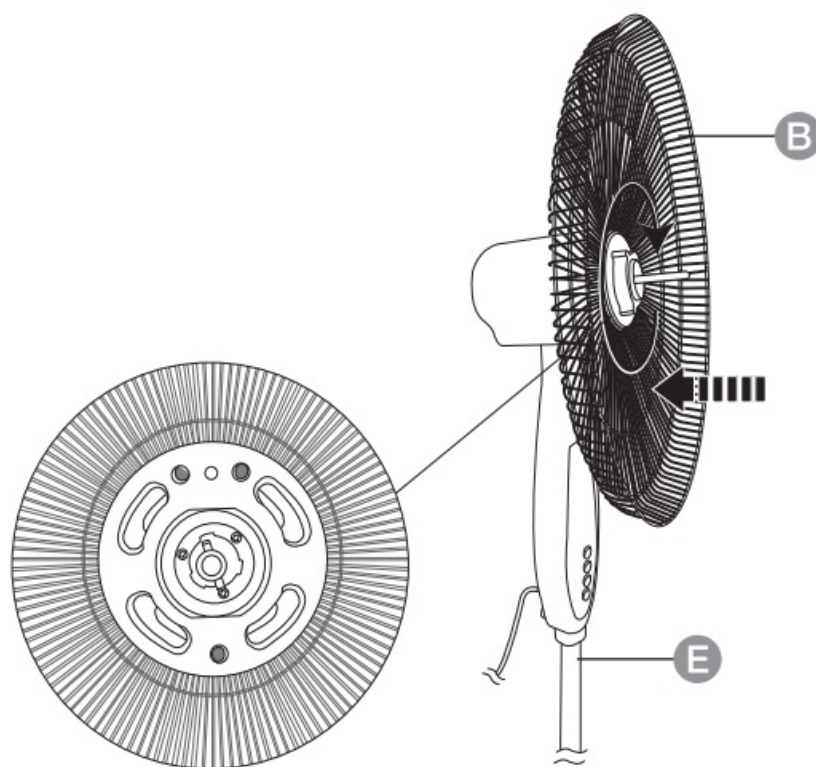
- Loosen the knurled screw on the leg (F) by turning it counter-clockwise.
- Extend the inner rod to its maximum length, then secure it with the knurled screw.
- Connect the main unit (E) with the rod. Fasten both parts with the knurled screw on the main unit.

Step 3

- Unscrew the fixing ring in the counter-clockwise direction.



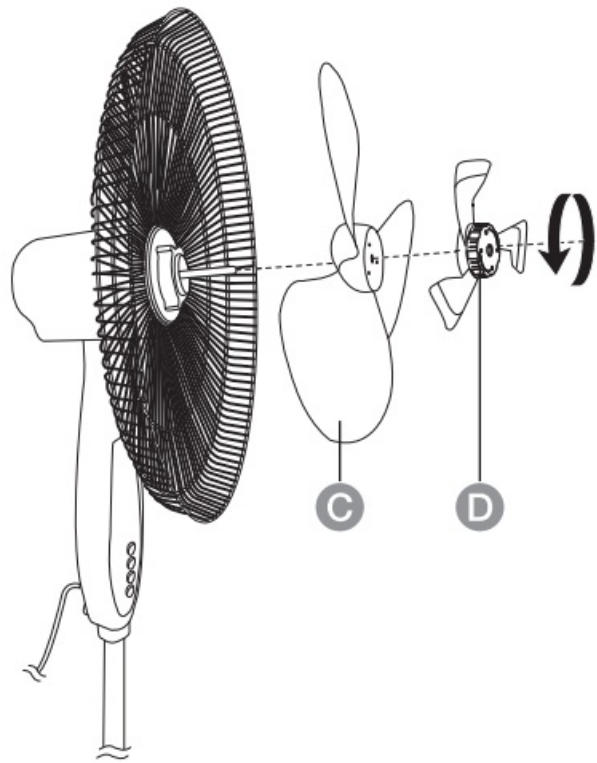
Step 4



NOTICE The product features a timer, which lets the user to set an automatic switch off time. You can choose from 0.5 to 7.5 hours.

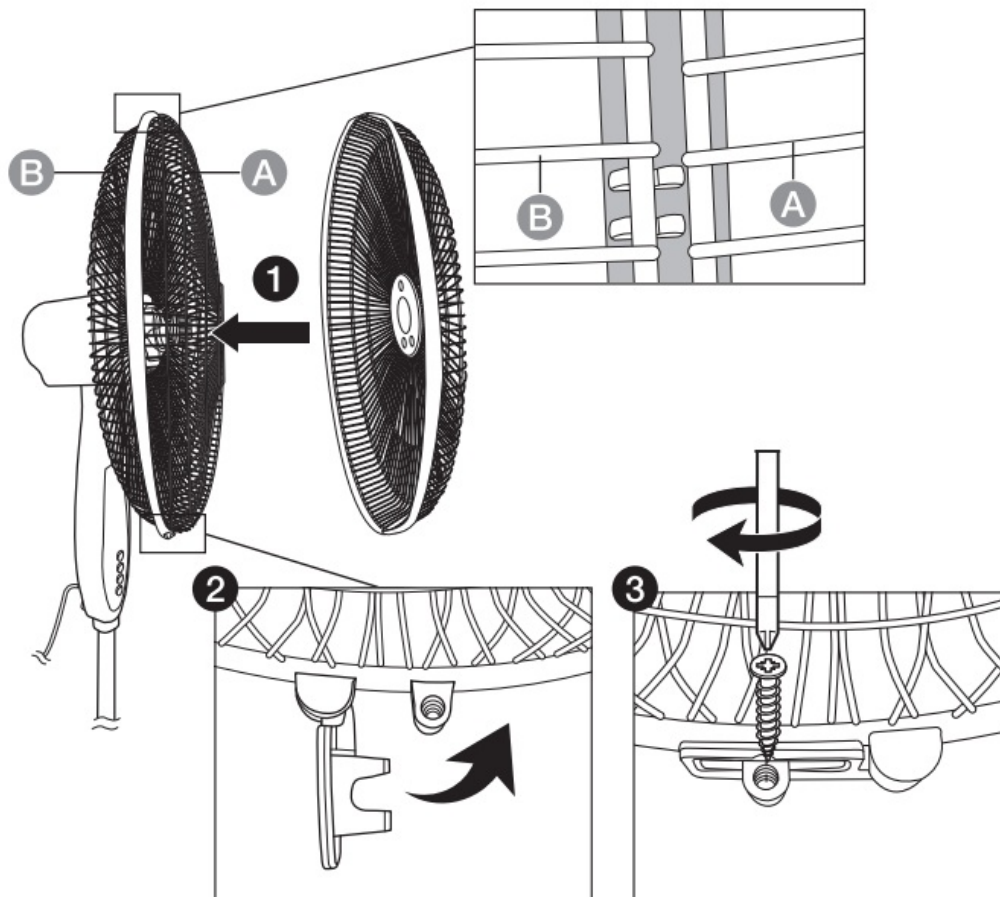
- Connect the rear guard (B) with the main unit (E). Align the rear guard's small round holes with the 3 pins on the main unit's front.
- Secure the rear guard (B) with the fixing ring.

Step 5:



- Place the large blade (C) on the shaft. Align the cross pin on the shaft with the groove on the rear side of the large blade (C).
- Place the small blade (D) on the shaft and then whilst holding the large blade (C), tighten the small blade (D) by turning it in a counter-clockwise direction until both blades are securely fitted.

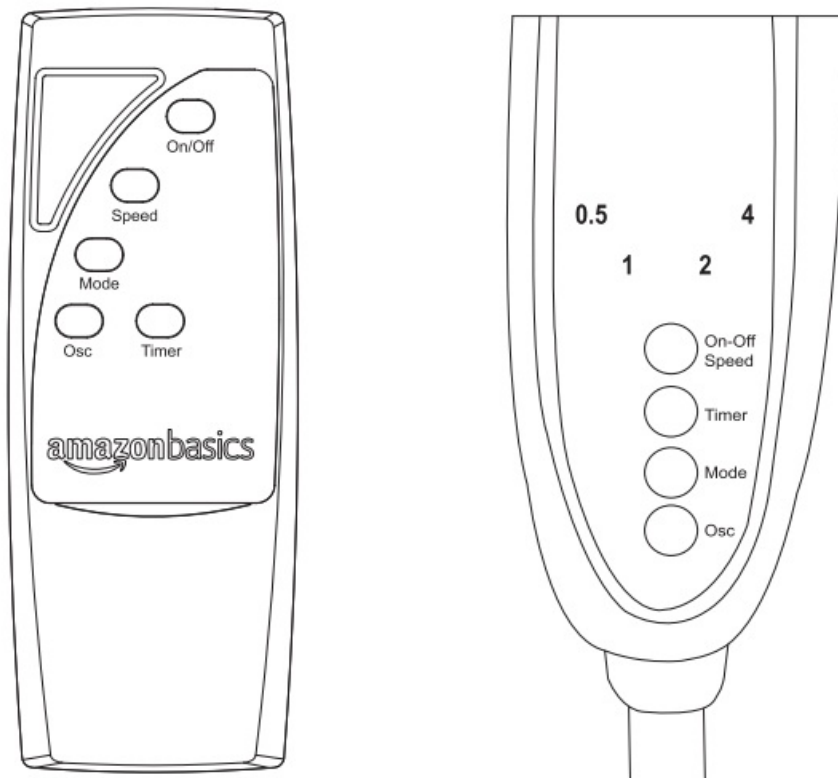
Step 6:



NOTICE Loosen the screw of the locking ring and open the locking bracket before connecting the front guard (A) with the rear guard (B).

- Clip the rear guard (B) into the front indent of the locking ring on the front guard (A).
- Close the locking bracket.
- Secure the guards with the locking screw.

Operation



On-Off	Turning on/off (remote control only)	On-Off Speed	Turning on/off; Speed adjustment (main unit only)
Speed	Speed adjustment (remote control only)	Osc	Oscillation setting
Mode	Mode selection	Timer	Timer setting

Turning on/off

- To turn on the product, press On-Off Speed button on the main unit (E), or press On/Off on the remote control (I). The product starts operation at speed set to 1.
- To turn off the product, press On/Off on the remote control again, or press On-Off Speed button repeatedly on the main unit (the product toggles between the 3 speed modes and then turns off).

Timer




NOTICE The product features a timer, which lets the user to set an automatic switch off time. You can choose from 0.5 to 7.5 hours.

- To turn on the timer, press the Timer button. An indicator next to the number 0.5 lights up on the main unit (E).
- To set a longer time, press the Timer button repeatedly. The timer toggles between 0.5 and 7.5 hours (e.g. if the timer is set for 2.5 hours, indicators next to the number 2 and 0.5 light up).

Airflow modes

NOTICE The product features 3 airflow modes: normal, nature and sleep.

Press Mode button to toggle between the airflow modes. You can choose from following modes:

Mode	Description
 Normal	Constant airflow at the currently selected speed.
 Nature	The product cycles through different speed modes to provide a natural breeze airflow.
 Sleep	Constant soft airflow.

Speed

NOTICE The product features 3 speed settings.

NOTICE When using On-Off Speed button on the main unit (E), the product toggles between 3 speed settings and then turns off (1-2-3-OFF).

To toggle between the speed modes, press On-Off Speed button on the main unit (E), or press the Speed button on the remote control (I).

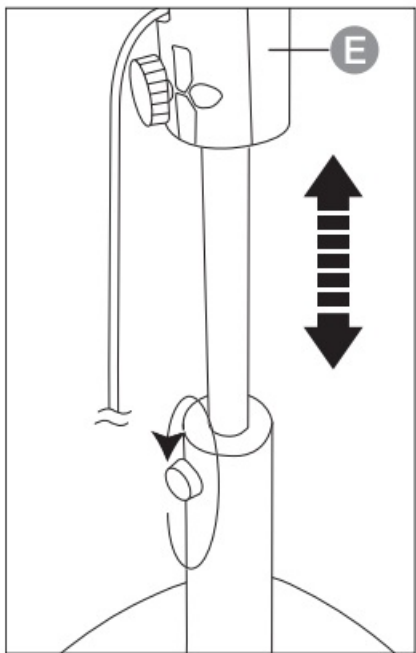
Oscillation

To turn on the automatic oscillation, press Osc button. To turn the oscillation off, press Osc button again.

Height/angle adjustment

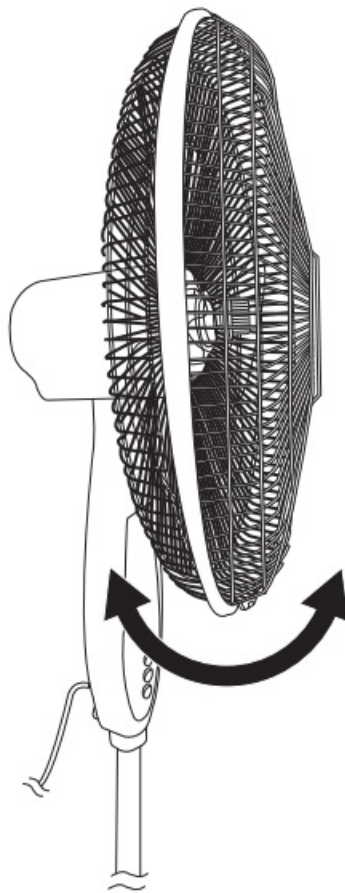
Height adjustment

- Turn the knurled screw on the leg counter-clockwise.
- Move the main unit (E) up or down.
- Secure the main unit by turning the knurled screw clockwise.



Angle adjustment

The angle of the fan can be adjusted manually.
Simply tilt the guard up or down.



Cleaning and Maintenance



WARNING Risk of electric shock! To prevent electric shock, unplug the product before cleaning.



WARNING Risk of electric shock! During cleaning do not immerse the product in water or other liquids. Never hold the product under running water.

Cleaning

- To clean the product, wipe with a soft, slightly moist cloth.
- Never use corrosive detergents, wire brushes, abrasive scourers, metal or sharp utensils to clean the product.
- Regularly remove dust and dirt from the guards using a vacuum cleaner.

Maintenance

- Store in a cool and dry place away from children and pets, ideally in original packaging.
- Avoid any vibrations and shocks.

UK Plug Replacement



WARNING Read these safety instructions thoroughly before connecting this appliance to the mains supply. Before switching on make sure that the voltage of your electricity supply is the same as that indicated on the rating

plate. This appliance is designed to operate on 220-240 V. Connecting it to any other power source may cause damage.

This appliance may be fitted with a non-rewireable plug. If it is necessary to change the fuse in the plug, the fuse cover must be refitted. If the fuse cover becomes lost or damaged, the plug must not be used until a suitable replacement is obtained.

If the plug has to be changed because it is not suitable for your socket, or due to damage, it should be cut off and a replacement fitted, following the wiring instructions shown below. The old plug must be disposed of safely, as insertion into a 13 A socket could cause an electric hazard.

The wires in the power cable of this appliance are coloured in accordance with the following code:


A. Green/Yellow = Earth

B. Blue = Neutral

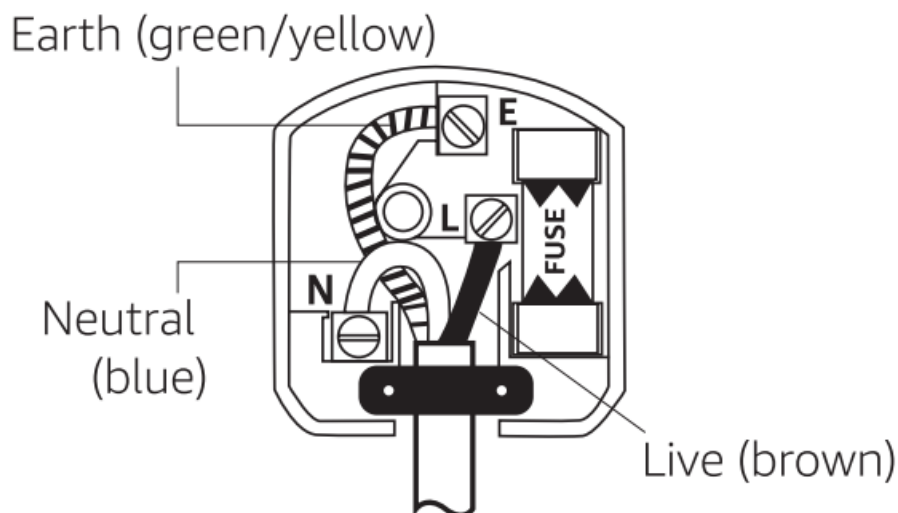
C. Brown = Live

The appliance is protected by a 13 A approved (BS 1362) fuse.

If the colours of the wires in the power cable of this appliance do not correspond with the markings on the terminals of your plug, proceed as follows.

The wire which is coloured Green/Yellow must be connected to the terminal which is marked E or by the earth symbol  or coloured Green or Green/Yellow. The wire which is coloured Blue must be connected to the terminal which is marked N or coloured Black. The wire which is coloured Brown must be connected to the terminal which is marked L or coloured Red.

Plug should be BS 1363/A approved fit a 13 A fuse



The outer sheath of the cable should be firmly held by the clamp



Troubleshooting

Problem	Solution
The product cannot be switched on.	Check if the power plug is connected to the power outlet. Check if the power outlet works. Wait for the product to cool down.
The product is too loud.	Tighten the blades.
The product vibrates.	Place the product on a level surface. Clean the blades.
For UK only: Fuse in the plug is blown.	Use a flat screwdriver to open the fuse compartment cover. Remove the fuse and replace with the same type (13 A, BS1362). Refit the cover.

Disposal (for Europe only)



The Waste Electrical and Electronic Equipment (WEEE) laws aim to minimise the impact of electrical and electronic goods on the environment and human health, by increasing re-use and recycling and by reducing the amount of WEEE going to landfill.

The symbol on this product or its packaging signifies that this product must be disposed separately from ordinary household wastes at its end of life. Be aware that this is your responsibility to dispose of electronic equipment at recycling centres in order to conserve natural resources. Each country should have its collection centres for electrical and electronic equipment recycling. For information about your recycling drop off area, please contact your related electrical and electronic equipment waste management authority, your local city office, or your household waste disposal service.



Specifications

Rated voltage:	220-240 V~, 50 Hz
Power consumption:	60 W

Importer Information

	For UK
Postal:	Amazon EU SARL, UK Branch, 1 Principal Place, Worship St, London EC2A 2FA, United Kingdom
Business Reg.:	BRO17427
	For EU
Postal:	Amazon EU S.arl., 38 avenue John F. Kennedy, L-1855 Luxembourg
Business Reg.:	134248

Product Information

Description	Symbol	Value	Unit
Maximum fan flow rate	F	47.2	m³/min
Fan power input	P	47.1	W
Service value	Sv	1.0	(m³/min)/AW
Standby power consumption	Psb	0.218	W
Off power consumption	Poff	—	W
Fan sound power level	Lwa	61	dB(A)
Maximum air velocity	C	2.9	m/s
Seasonal electricity consumption	Q	19.44	kWh/a
Measurement standard for service value	EN 50564:2011 EN IEC 60879:2019 EN IEC 60704-2-7:2020 EN IEC 60704-1:2021		

Contact detail for obtaining more information

For EU

Amazon EU S.a rl., 38 avenue John F. Kennedy, L-1855 Luxembourg

For UK

Amazon EU SARL, UK Branch,
1 Principal Place, Worship St,
London EC2A 2FA, United Kingdom



Feedback and Help

We would love to hear your feedback. To ensure we are providing the best customer experience possible, please consider writing a customer review.



amazon.co.uk/review/review-your-purchases#

If you need help with your Amazon Basics product, please use the website below.



amazon.co.uk/gp/help/customer/contact-us

amazon basics




MADE IN CHINA



V08-01/24

Documents / Resources

	<p>amazon basics B07VYMJ4TN Oscillating Digital Dual 3 Blades Standing Pedestal Fan With Remote Control [pdf] Instruction Manual</p> <p>B07VYMJ4TN Oscillating Digital Dual 3 Blades Standing Pedestal Fan With Remote Control, B07VYMJ4TN, Oscillating Digital Dual 3 Blades Standing Pedestal Fan With Remote Control, 3 Blades Standing Pedestal Fan With Remote Control, Standing Pedestal Fan With Remote Control, Remote Control</p>
---	--

References

- [User Manual](#)

Manuals+, Privacy Policy

This website is an independent publication and is neither affiliated with nor endorsed by any of the trademark owners. The "Bluetooth®" word mark and logos are registered trademarks owned by Bluetooth SIG, Inc. The "Wi-Fi®" word mark and logos are registered trademarks owned by the Wi-Fi Alliance. Any use of these marks on this website does not imply any affiliation with or endorsement.