



## amazon basics B07V81CNJN Adjustable Universal Precision Smoothing Bench Hand Plane Instruction Manual

[Home](#) » [amazon basics](#) » amazon basics B07V81CNJN Adjustable Universal Precision Smoothing Bench Hand Plane Instruction Manual 

### Contents

- [1 amazon basics B07V81CNJN Adjustable Universal Precision Smoothing Bench Hand Plane](#)
- [2 IMPORTANT SAFEGUARDS](#)
- [3 Before First Use](#)
- [4 Tool Overview](#)
- [5 Assembly/Disassembly](#)
- [6 Adjustment](#)
- [7 Operation](#)
- [8 Maintenance](#)
- [9 Specifications](#)
- [10 Feedback and Help](#)
- [11 Documents / Resources](#)
  - [11.1 References](#)
- [12 Related Posts](#)



amazon basics B07V81CNJN Adjustable Universal Precision Smoothing Bench Hand Plane



## IMPORTANT SAFEGUARDS

Read these instructions carefully and retain them for future use. If this tool is passed to a third party, then these instructions must be included.

When using the tool, basic safety precautions should always be followed to reduce the risk of injury including the following:

### **CAUTION Risk of cuts!**

Parts of this tool are extremely sharp. Care must be taken at all times when handling them. To avoid injury the tool should always be held with two hands.

- This tool is not a toy. Children must always be supervised by an adult when using the tool.
- Remain alert and use good judgment when using this tool. Do not use this tool if you are in any way impaired by medications, alcohol, drugs or fatigue.
- Dress appropriately and remove all jewelry, secure loose clothing and tie up long hair before using this tool.
- There is a risk of splintering and dust formation during woodworking. Wear appropriate protective clothing (e.g. work gloves, dust mask, safety glasses, etc.).
- Keep the blade sharp to avoid the plane catching on material which may cause it to move in an unexpected way or cause workpiece damage.
- Always check the workpiece for any metal (nails, screws, staples, etc.) that could damage the cutting edge.
- Make sure that the workpiece is clamped or held securely.
- Do not modify the tool in any way unless instructed by this user manual.

## Intended Use

- This tool is intended for woodworking, mainly for creating even and plane surfaces.
- This tool is intended for household use only. It is not intended for commercial use.
- No liability will be accepted for damages resulting from improper use or non-compliance with these instructions.

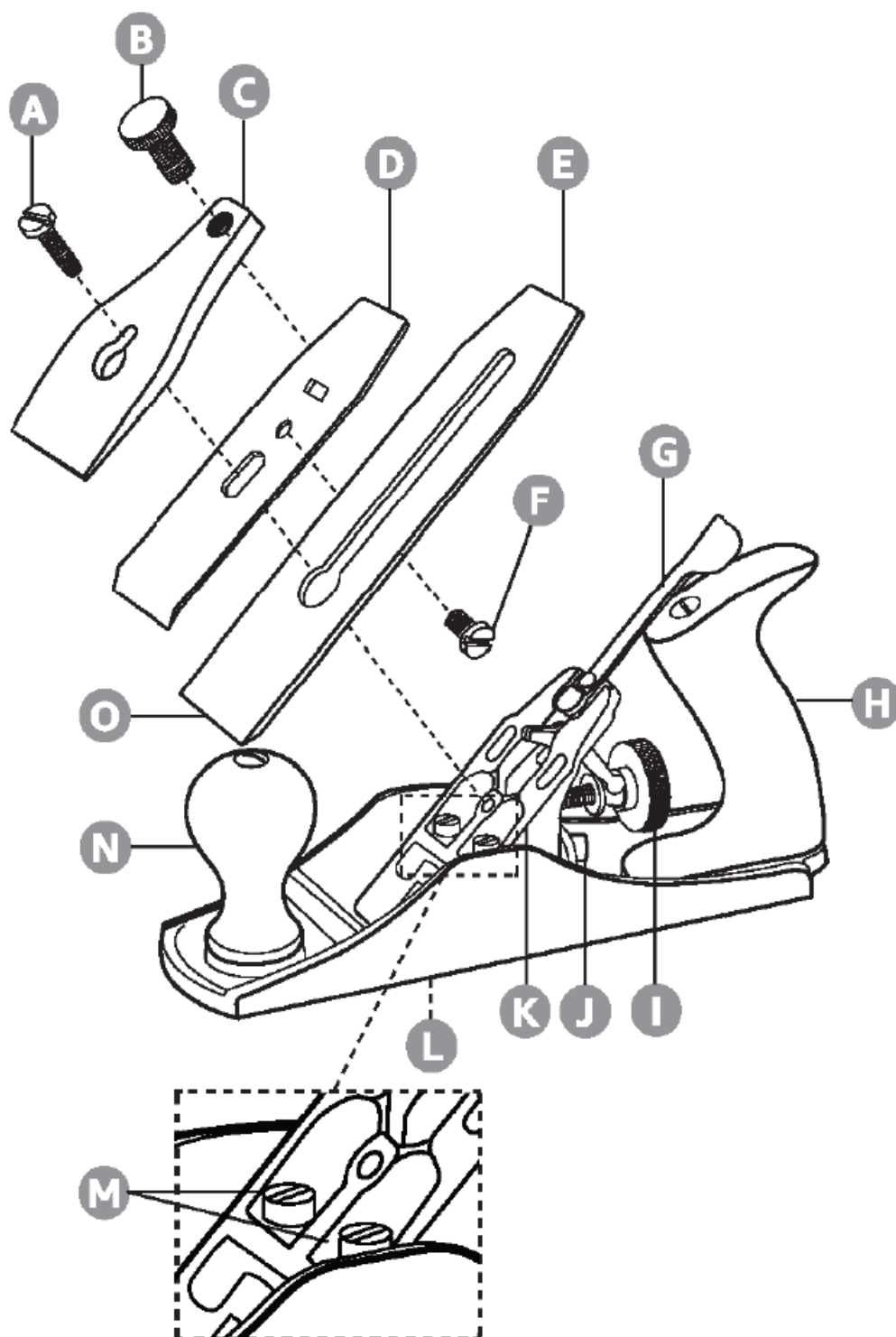
## Before First Use

**Danger Risk of suffocation!**

Keep any packaging materials away from children – these materials are a potential source of danger, e.g. suffocation.

- Check the tool for transport damages.
- Remove all the packing materials.
- Make sure the blade (E) is sharp and the sole (L) is flat before use. Sharpen the blade (E) and flatten the sole (L) if necessary (see section “Sharpening the blade” and “Flattening the sole”).

## Tool Overview



- **A.** Blade screw
- **B.** Clamping screw
- **C.** Lever cap
- **D.** Chip breaker
- **E.** Blade
- **F.** Screw
- **G.** Lateral adjustment lever
- **H.** Rear handle
- **I.** Depth adjustment wheel
- **J.** Frog adjusting screw
- **K.** Frog
- **L.** Sole
- **M.** Frog fixing nuts
- **N.** Front handle
- **O.** Cutting edge

## **Assembly/Disassembly**

### **NOTICE**

To disassemble the tool, follow the steps below in a reverse order.

1. Attach the blade (E) to the chip breaker (D) using the screw (F). The flat surfaces of the blade (E) has to face the chip breaker (D).
2. Place the blade (E) with the chip breaker (D) onto the frog (K).
3. Place the lever cap (C) on the chip breaker (D).
4. Tighten the blade screw (A).
5. Tighten the clamping screw (B).

### **NOTICE**

Do not over-tighten the clamping screw (B). It should be tightened enough to secure the blade (E) during use. Turning the depth adjustment wheel (I) should be possible without an excessive force.

## **Adjustment**

### **Adjusting the cutting depth**

### **NOTICE**

- For creating an even workpiece surface, the blade's (E) cutting edge (O) should be parallel to the mouth opening on the sole (L).
  - If you want to achieve a side slope you can move one side of the blade (E) out more than the other. In that case the side protruding more from the mouth opening will cut deeper into the workpiece surface.
1. Turn the depth adjustment wheel (I) to adjust the depth of cut.
    - Turn the depth adjustment wheel (I) clockwise to move the blade in for increasing the cutting depth.

- Turn the depth adjustment wheel (I) counter-clockwise to move the blade out for reducing the cutting depth.
2. Use the lateral adjustment lever (G) for setting the lateral position of the blade (E).

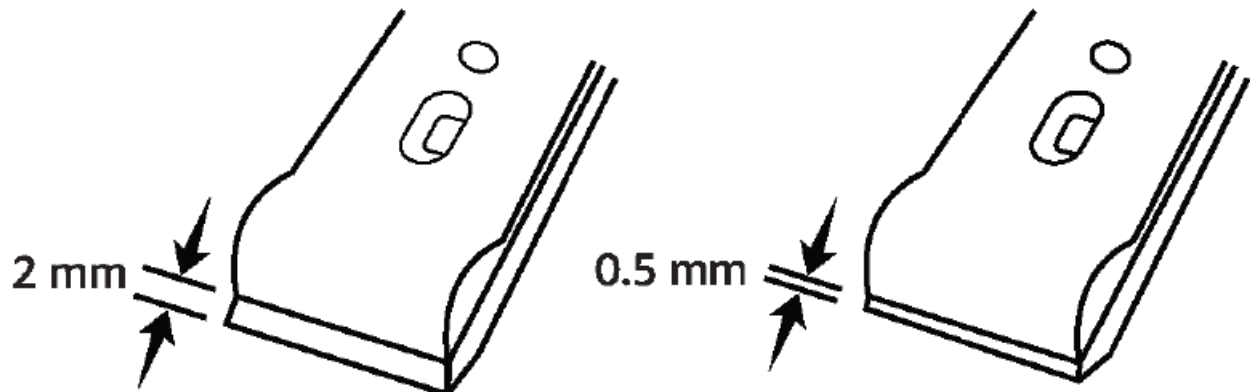
### Adjusting the cutting angle

#### NOTICE

- For fine cuts decrease the cutting angle to tighten up the mouth opening , on the sole (L).
  - For rough cuts increase the cutting angle to widen the mouth opening , on the sole (L).
1. Loosen the clamping screw (B) and remove the lever cap (C), blade (E) and the chip breaker (D).
  2. Slightly loosen the frog fixing nuts (M) to allow the adjustment of the frog's (K) position.
  3. Turn the frog adjusting screw (J) clockwise for a larger cutting angle, or turn it counter-clockwise for a smaller cutting angle.
  4. Refit all parts.
  5. Check if the desired angle is reached. Repeat steps 1 to 4 if necessary.

### Reducing the tear-out

1. Loosen the clamping screw (B) and remove the lever cap (C), blade (E) and the chip breaker (D).



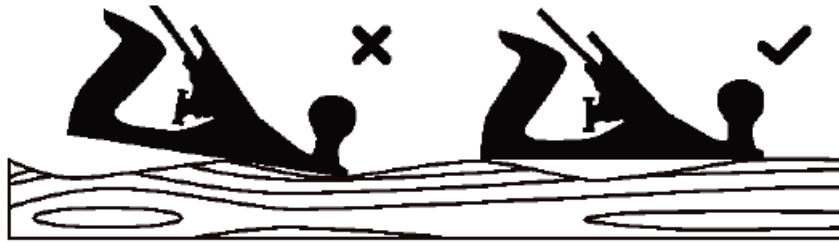
2. Slightly loosen the screw (F) to adjust the positions of the blade (E) against the chip breaker (D). For general work, leave 2 mm of the blade (E) protruding from the chip breaker (D); for fine finishing work, reduce the gap to 0.5 mm.
3. Tighten the screw (F) and refit all parts.

### Operation

For a secure operation always hold the tool with one hand on the front handle (N) and the other hand on the rear handle (H).

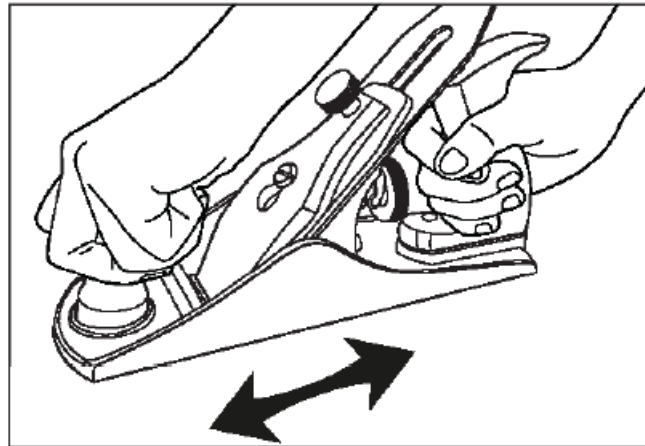
### General rules

#### For best results:



- Move the blade (E) downwards.

## Working techniques



1. Hold the tool with both hands. Put the palm of one hand on the top of the front handle (N), and firmly grab the rear handle (H) with the other hand.
2. Place the tool with its sole (L) on the workpiece. Push and pull along the surface of the workpiece with the rear handle (H), while pressing down hard on the front handle (N).

## Maintenance

### De-rusting and rust protection

- Use commercially available rust cleaner or citrus cleaner. Wear gloves and follow manufacturer's cleaning instructions.
- Spray the metal components. Let them stand for several minutes then, using steel wool, brass brush or toothbrush, scrub off as much of the rust as you can.
- To prevent the metal parts from rusting, keep them lubricated with a commercially available lubrication solution.

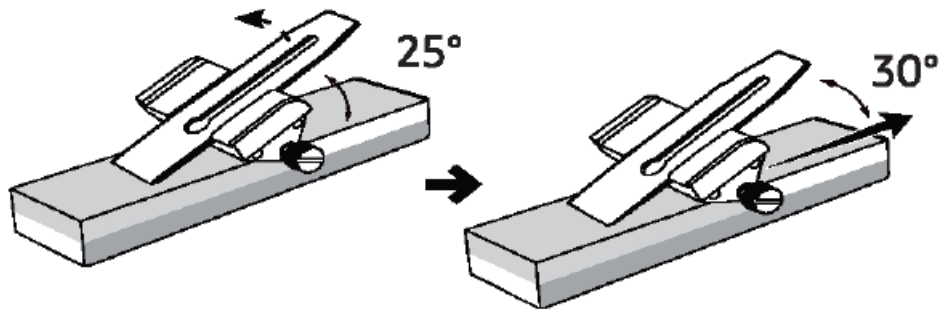
### NOTICE

Some lubrication solutions may interact with the wood what may affect the look of the wood. Ask your dealer for an accurate lubrication solution.

### Sharpening the blade

Use quality oil sharpening stones. Lubricate them with an accurate lubrication solution.

1. Remove the blade (E) from the tool.



2. Place the cutting edge (O) against the sharpening stone at approximately 25° angle.
3. Slightly lift the blade (E) to a 30° angle.
4. Pull the blade (E) backwards to sharpen the cutting edge (O). Repeat until sharpened.
5. Draw the sharpened cutting edge (O) across the corner of a scrap piece of wood to remove burr.
6. Reassemble the tool.

### Flattening the sole

#### NOTICE

Make sure all parts are installed and in tension before flattening the sole (L). Otherwise, the blade (E) becomes flex once the parts are reinstalled to the tool.

1. Affix a coarse sandpaper to a dead-flat surface, such as a granite or cast iron table.
2. Draw lines across the entire sole (L) at regular intervals with a permanent marker.
3. Holding the tool with even pressure at the front and back, work the sole over the sandpaper.
4. Pause periodically to check and continue until all lines on the sole (L) fade evenly.
5. When all lines are removed, polish the sole (L) by working it over a fine sandpaper.

### Storage

Store in a cool and dry place away from children and pets, ideally in original packaging.

### Specifications

- **Body Length:** 10" (254 mm)
- **Blade Width:** 2" (51.2 mm)
- **Net weight:** approx. 4.1 lbs (1.852 kg)
- **Dimensions (W x H x D):** approx. 2.6 x 5.7 x 10" (65 x 145 x 254 mm)

### Importer Information

- **Postal:**

**For EU**

Amazon EU S.a r.l., 38 avenue John F. Kennedy, L-1855 Luxembourg

- **Business Reg.:** 134248

- **Postal:**

**For UK**

Amazon EU SARL, UK Branch, 1 Principal Place, Worship St, London EC2A 2FA, United Kingdom.

- **Business Reg.:** BR017427

## Feedback and Help

### Love it? Hate it? Let us know with a customer review.

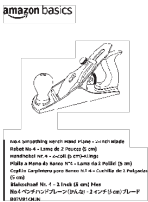
AmazonBasics is committed to delivering customer-driven tools that live up to your high standards. We encourage you to write a review sharing your experiences with the product.

- US: [amazon.com/review/review-your-purchases#](https://www.amazon.com/review/review-your-purchases#)
- UK: [amazon.co.uk/review/review-your-purchases#](https://www.amazon.co.uk/review/review-your-purchases#)
- US: [amazon.com/gp/help/customer/contact-us](https://www.amazon.com/gp/help/customer/contact-us)
- UK: [amazon.co.uk/gp/help/customer/contact-us](https://www.amazon.co.uk/gp/help/customer/contact-us).

[amazon.com/AmazonBasics](https://www.amazon.com/AmazonBasics).

MADE IN CHINA.

## Documents / Resources

	<p><a href="#">amazon basics B07V81CNJN Adjustable Universal Precision Smoothing Bench Hand Plane</a> [pdf] Instruction Manual</p> <p>B07V81CNJN, B07V81CNJN Adjustable Universal Precision Smoothing Bench Hand Plane, A djustable Universal Precision Smoothing Bench Hand Plane, Universal Precision Smoothing Be nch Hand Plane, Precision Smoothing Bench Hand Plane, Smoothing Bench Hand Plane, Ben ch Hand Plane, Hand Plane, Plane</p>
---	---

## References

- [User Manual](#)