



amazon basics B0799BK2RK Biometric Fingerprint Safe User Manual

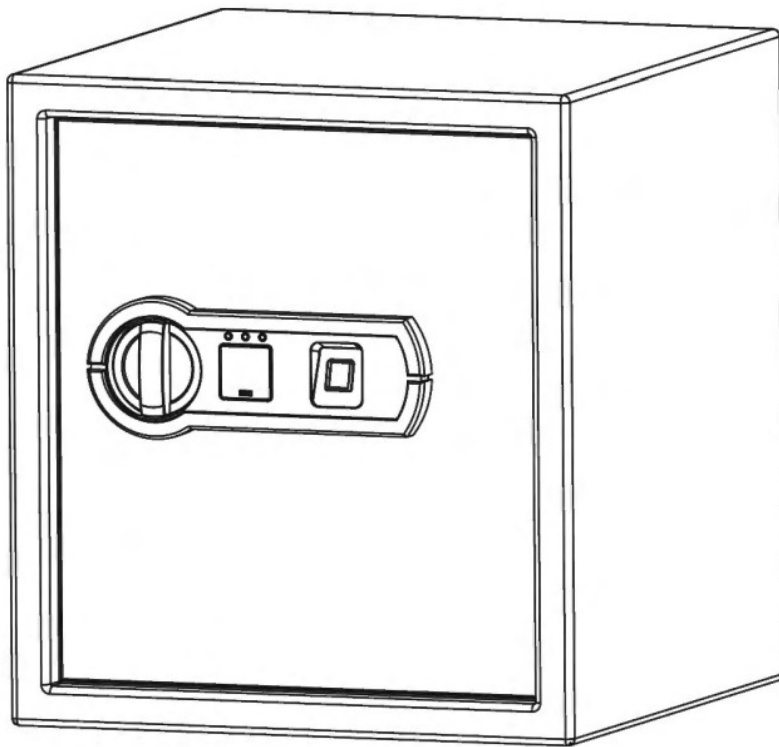
[Home](#) » [amazon basics](#) » amazon basics B0799BK2RK Biometric Fingerprint Safe User Manual 



Contents

- 1 B0799BK2RK Biometric Fingerprint Safe
- 2 Contents:
- 3 Opening the Safe for the First Time
- 4 Install Batteries
- 5 Fingerprint Registration (Maximum storage of 50 fingerprints)
- 6 Automatic Lockout
- 7 Turn The Keypad Sound Off/On
- 8 Clear Registered Fingerprints
- 9 Securing the safe to aFloor or wall
- 10 Specifications
- 11 Symbols Explanation
- 12 Disposal
- 13 Feedback and Help
- 14 Documents / Resources
 - 14.1 References

B0799BK2RK Biometric Fingerprint Safe

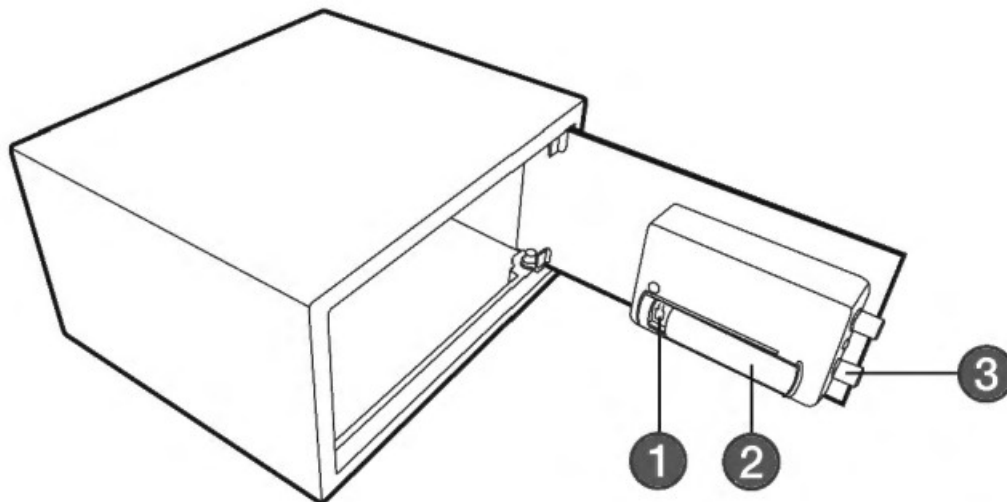


Biometric Fingerprint Safe
BO799BK2RK, BO79945TPH, BO79997BN6, BO7995WM5G, BO7994RWEBF,
BO7996L2DK

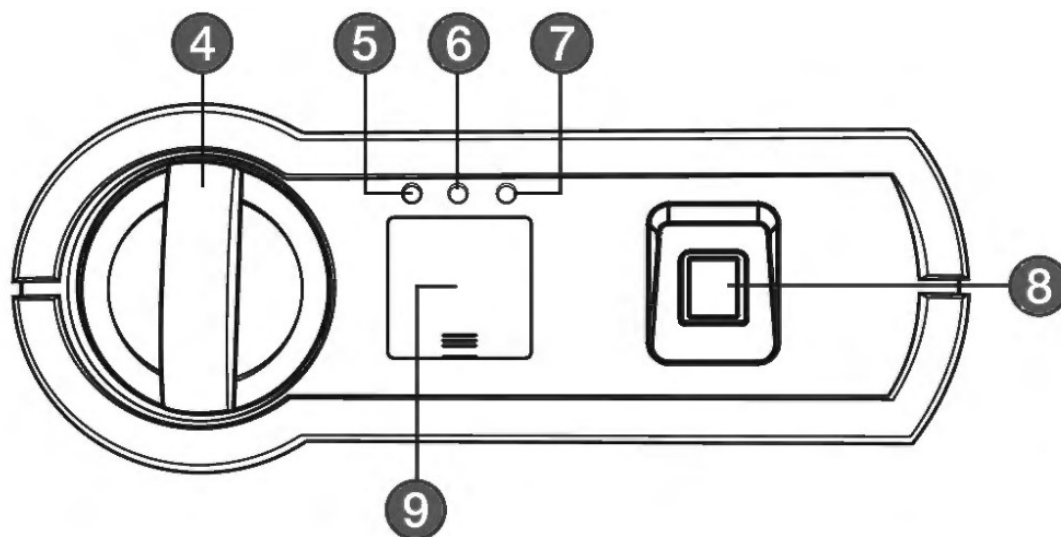
Contents:

Before getting started, ensure the package contains the following components:

1.1 Schematic drawing of case



1.2 Schematic drawing of control panel

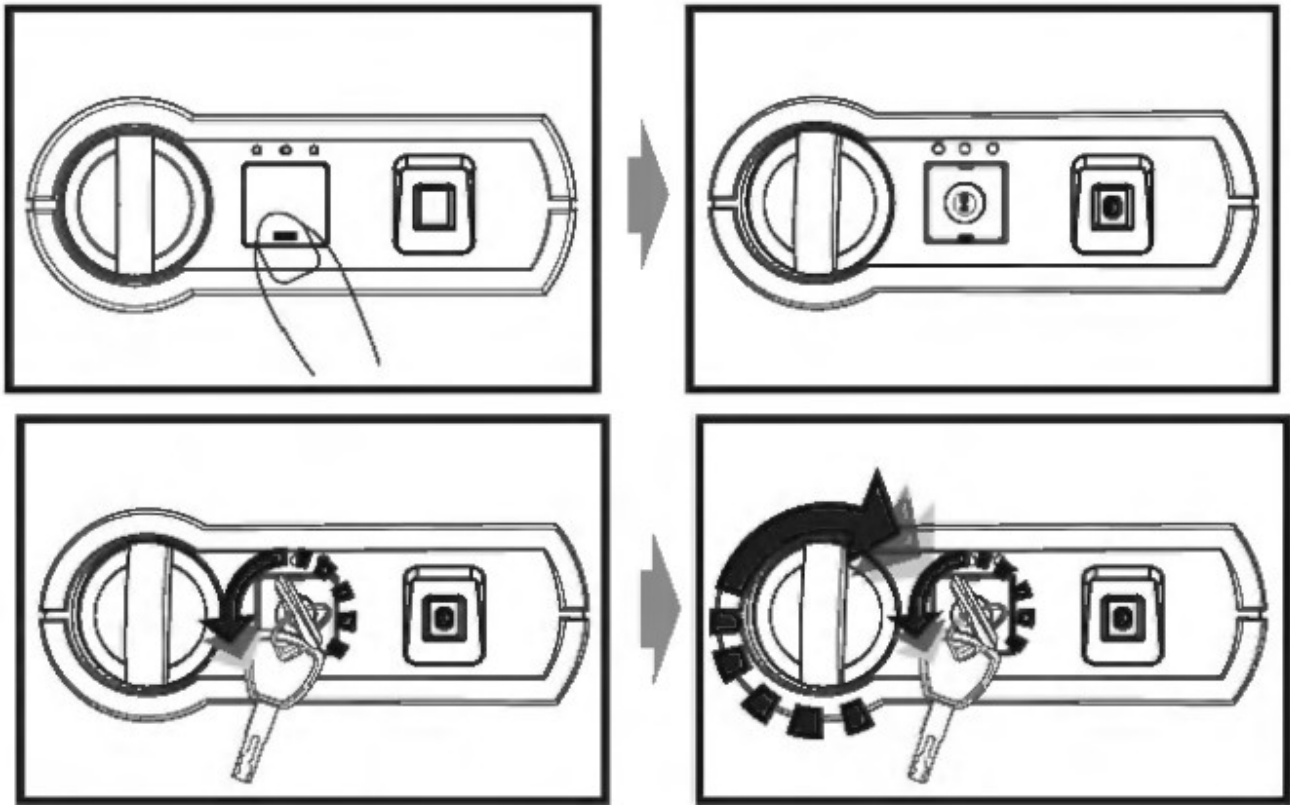


1. Reset button
2. Battery compartment
3. Locking bolts
4. Knob
5. Yellow light
6. Red light
7. Green light
8. Finger collector screen
9. Key cover

Opening the Safe for the First Time

1. To open the safe for the first time you will need the key.
2. Remove the cover of lock.
3. Insert the key and turn it counterclockwise.
4. Turn the knob clockwise to open the door.
5. Turn the knob counterclockwise when closing the door.

Please do not keep the keys in your safe!



Install Batteries

1. Open the safe door using the instructions listed above.
2. Open the battery compartment and insert 4 x AA batteries (not included), matching them to the correct polarities.
3. Replace the battery cover.

NOTICE If the green light turns on with two beeps, and then yellow light flashes 5 together with 5 beeps when using the finger to unlock the safe, it means the battery voltage is low and the batteries should be replaced.

Fingerprint Registration (Maximum storage of 50 fingerprints)

Follow steps 1 through 4 below to register your fingerprint. Be sure to press your finger using the same position and angle for each step.

After completing the first registration (steps 1 through 4), we highly recommend that you do a second registration (repeat steps 1 through 4) with the same finger but at a different angle or position. For example, if you placed your right index finger vertically in the center of the scanner for the first registration, register the same index finger in the center but at a slight angle (see example image on the next page). Registering additional positions increases the likelihood the scanner will successfully read your fingerprint when you try to open the safe.

1. Remove the battery cover to locate the reset button. Press the reset button. The green light on the keypad will flash two times with two beeps.
2. Press your finger to the biometric scanner. Remove your finger when you hear a beep and the green light flashes once.
3. After 1 second immediately following the first beep, press your finger in the same position and angle again on the scanner. Remove your finger when you hear a beep and the green light flashes once.
4. After 1 second immediately following the second beep, press your finger in the same position and angle again on the scanner. Then you will hear two beeps with the green light flashing twice. Now your fingerprint has been

successfully registered.

NOTICE When re-pressing your finger on the scanner in steps 2,3 and 4, you must proceed to the next step within 5 seconds. Otherwise, the registration process must be restarted. When re-pressing your finger, make sure to use same position each time.

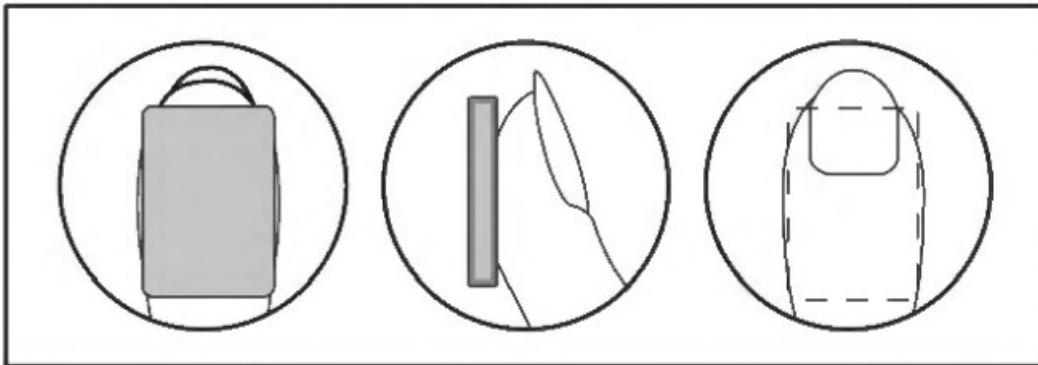
5. If the red light flashes 5 times with 5 beeps, this means the registration failed and you must restart the registration process.

NOTICE You can not register more than 50 fingerprints. If the red light flashes 5 times with 5 beeps when you press the reset button, it means the fingerprint storage capacity is full.

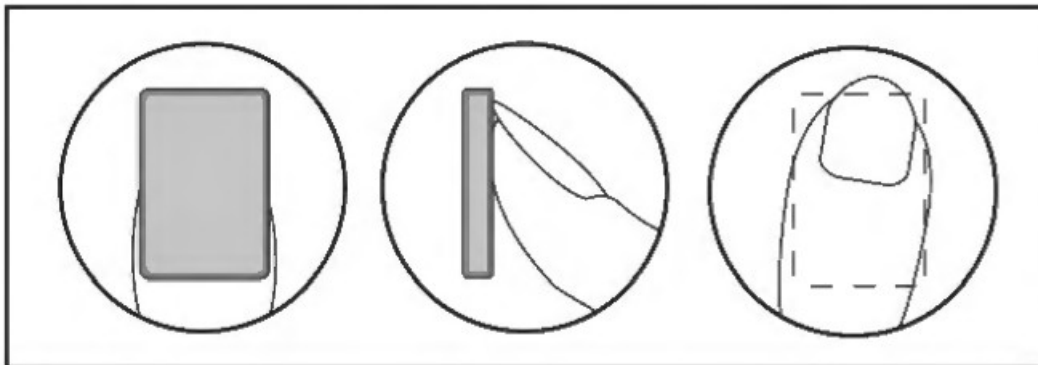
NOTICE To increase capture accuracy, register 3 or 4 times with different parts of the same finger to ensure most areas of the finger are registered.

4.1 Registering the same finger at multiple positions.

Registration #1 – Centered and Vertical



Registration #2 – Centered at an angle



4.2 Open The Safe With Your Fingerprint

1. Press a previously-registered finger onto the biometric scanner.
2. If your fingerprint is accepted, you will hear 2 beeps and the green light will turn on. You will have 5 seconds to turn the handle before the locking mechanism is reactivated.
3. If the red lights flashes 3 times together with 3 beeps, the fingerprint is invalid.

Automatic Lockout

1. If an invalid fingerprint is entered 3 consecutive times, you will hear 5 beeps with the red light flashing 5 times. This indicates the safe is in lockout for 60 seconds.
2. When the lockout period has ended, the safe will beep once together with the green light flashing once.

NOTICE Entering an invalid fingerprint 3 more times will lock the safe for 5 minutes.

NOTICE During the lockout period, you can still use the emergency key to open the safe door.

Turn The Keypad Sound Off/On

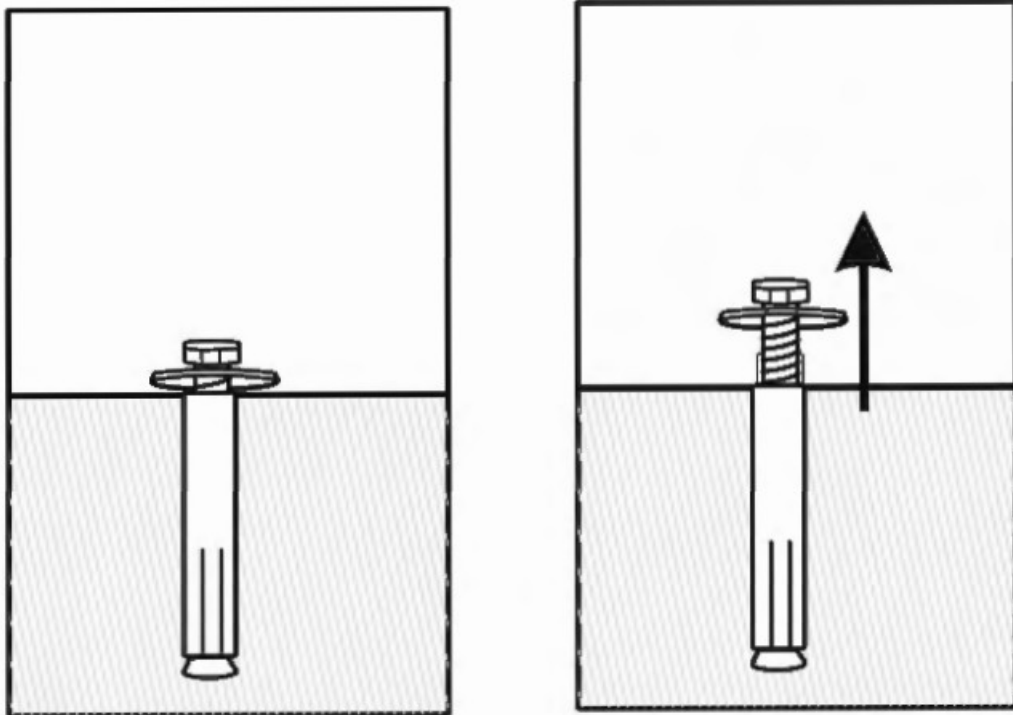
- To turn off the keypad sound, press the scanner with a registered finger for 10 seconds until the green light flashes twice.
- To turn on the keypad sound, press the scanner with a registered finger for 10 seconds until the green light flashes twice with 2 beeps.

Clear Registered Fingerprints

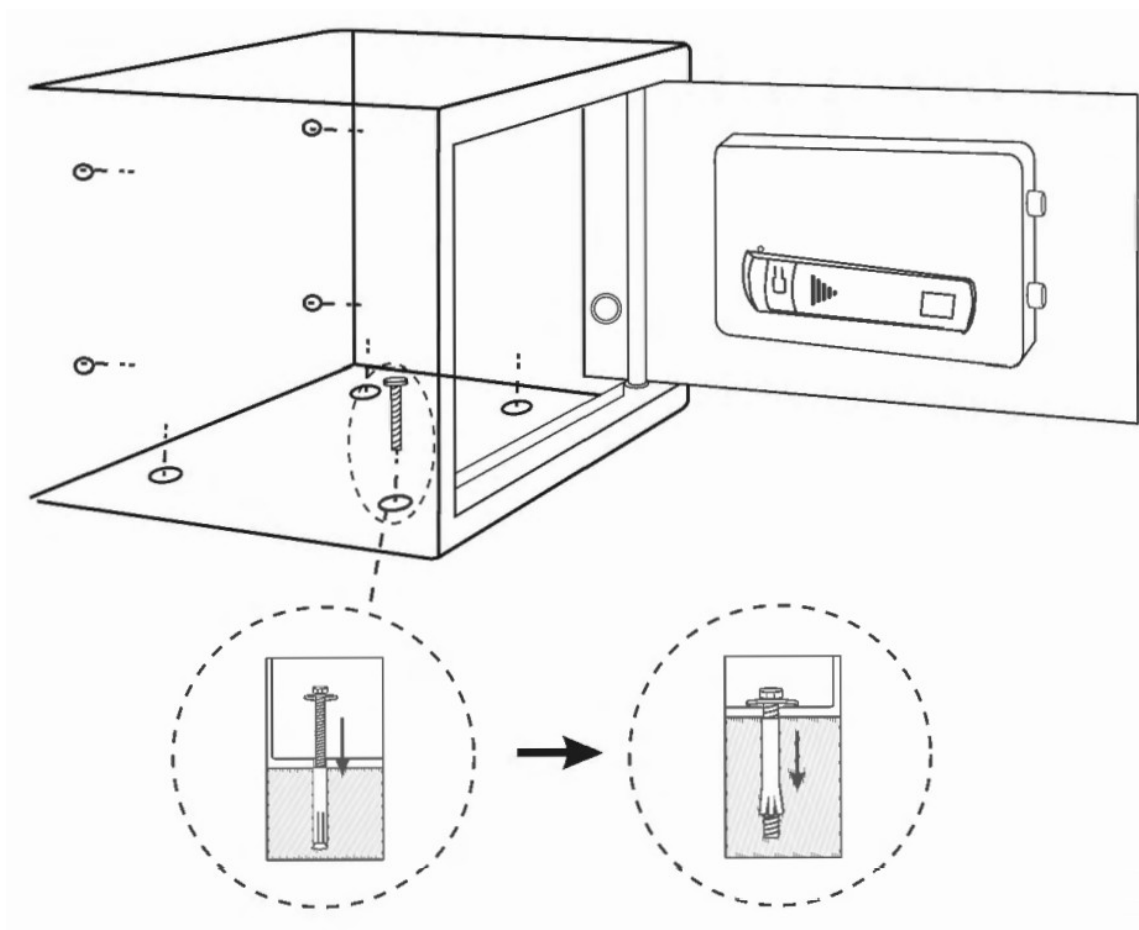
- Hold the reset button on the inside of the safe for 5 seconds until the green light flashes and beeps 10 times. This indicates that all enrolled scans have been erased and you can register new fingerprints.

Securing the safe to a Floor or wall

- Select a stable, dry and secure location for your safe.
- If bolting to a wall, make sure that your safe is resting on a supporting surface (such as the floor or a shelf). Do not bolt your safe to both the floor and wall.



1. Place the safe on the selected location. Use a pencil to mark the mounting holes on the floor or wall.
2. Move the safe and drill 2-inch-deep mounting holes (~50 mm) using a 12 mm drill bit.
3. Put the expansion bolt (included) into the mounting hole, then turn the clamping screw counterclockwise to separate.
4. Move the safe back in place, align the safe over the holes. Then secure the safe with the clamping screw.



Specifications

	Cubic Feet	Voltage/ battery type	Dimensions (W x H x D)	Net weight
B0799BK2RK	0.5 (14,2 L)	4 x AA Alkaline battery	13.8 x 9.8 x 9.8 inch (350 x 250 x 250 mm)	20.6 lbs (9.35 kg)
B079945TPH	0.7 (19,8 L)	4 x AA Alkaline battery	16.9 x 7.1 x 14.6 inch (430 x 180 x 370 mm)	23.4 lbs (10.6 kg)
B079997BN6	1.0 (28,3 L)	4 x AA Alkaline battery	16.9 x 9.1 x 14.6 inch (430 x 230 x 370 mm)	28.4 lbs (12.9 kg)
B07995WM5G	1.2 (34 L)	4 x AA Alkaline battery	13.0 x 14.2 x 13.0 inch (330 x 360 x 330 mm)	28.9 lbs (13.15 kg)
B07994RWBF	1.52 (43 L)	4 x AA Alkaline battery	13.8 x 16.5 x 13.0 inch (350 x 420 x 330 mm)	33.7 lbs (15.3 kg)
B07996L2DK	1.8 (51 14)	4 x AA Alkaline battery	13.8 x 19.7 x 13.0 inch (350 x 500 x 330 mm)	37.5 lbs (17 kg)

9.1 Importer Information For EU

Postal:	Amazon EU S.ar.L, 38 avenue John F. Kennedy, L-1855 Luxembourg
Business Reg.:	134248

For UK

Postal:	Amazon EU SARL, UK Branch, 1 Principal Place, Worship St, London EC2A 2FA, United Kingdom
Business Reg.:	BRO17427

Symbols Explanation



This symbol stands for “Conformité Européenne”, which declares “Conformity with EU directives, regulations and applicable standards”. With the CE-marking, the manufacturer confirms that this product complies with applicable European directives and regulation.



This symbol stands for “United Kingdom Conformity Assessed”. With the UKCA-marking, the manufacturer confirms that this product complies with applicable regulations and standards within Great Britain.

Disposal



The Waste Electrical and Electronic Equipment (WEEE) Directive aims to minimize the impact of electrical and electronic goods on the environment, by increasing re-use and recycling and by reducing the amount of WEEE going to landfill. The symbol on this product or its packaging signifies that this product must be disposed separately from ordinary household wastes at its end of life. Be aware that this is your responsibility to dispose of electronic equipment at recycling centers in order to conserve natural resources. Each country should have its collection centers for electrical and electronic equipment recycling. For information about your recycling drop off area, please contact your related electrical and electronic equipment waste management authority, your local city office, or your house hold waste disposal service.

Feedback and Help

We would love to hear your feedback. To ensure we are providing the best customer experience possible, please consider writing a customer review.

Scan QR Code below with your phone camera or QR reader:

US:





 UK: amazon.co.uk/review/review-your-purchases#

If you need help with your Amazon Basics product, please use the website or number below.

 US: amazon.com/gp/help/customer/contact-us

 UK; amazon.co.uk/gp/help/customer/contact-us




+1 877-485-0385 (US Phone Number)
amazon.com/AmazonBasics



MADE IN CHINA
VO9-11/23



Documents / Resources

	<p>amazon basics B0799BK2RK Biometric Fingerprint Safe [pdf] User Manual B0799BK2RK Biometric Fingerprint Safe, B0799BK2RK, Biometric Fingerprint Safe, Fingerprint Safe</p>
---	--

References

- [User Manual](#)