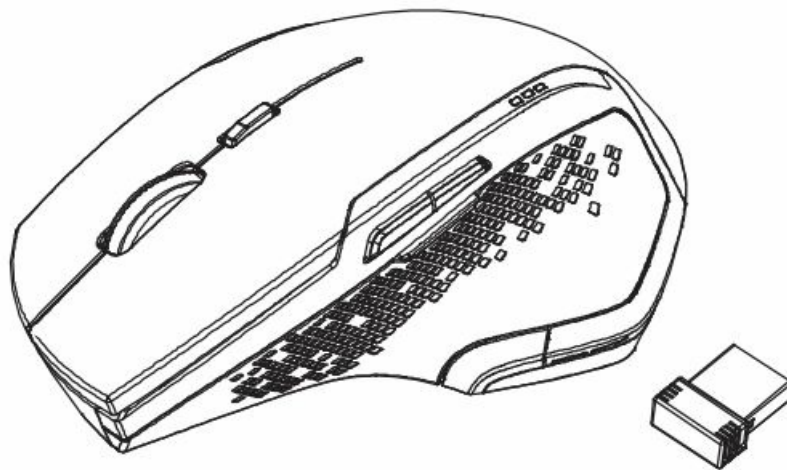




amazon basics B078HWKTT3 Full Ergonomic Wireless Mouse Instruction Manual

[Home](#) » [amazon basics](#) » amazon basics B078HWKTT3 Full Ergonomic Wireless Mouse Instruction Manual 

amazon basics B078HWKTT3 Full Ergonomic Wireless
Mouse Instruction Manual

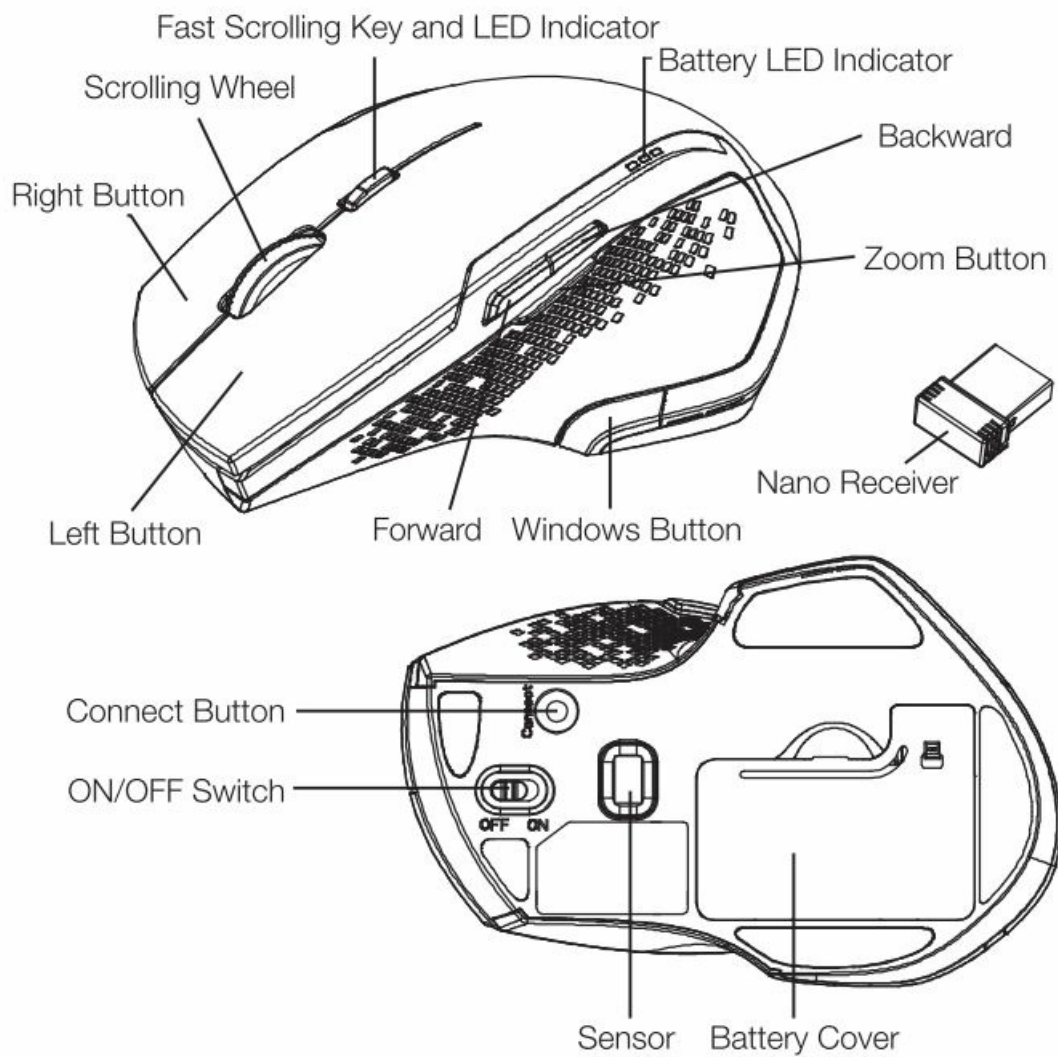


Full-Size Ergonomic Wireless Mouse with Fast Scrolling

Contents

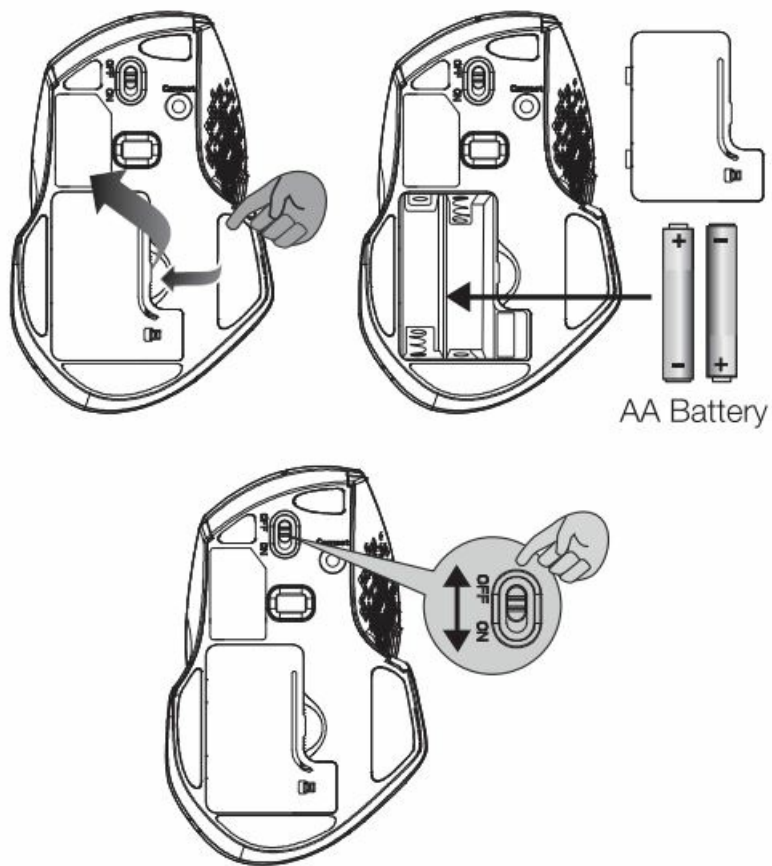
- [1 Parts List](#)
- [2 Setup](#)
- [3 Pairing](#)
- [4 Operation Controls](#)
- [5 Safety and Compliance](#)
- [6 Cleaning and Maintenance](#)
- [7 Specifications](#)
- [8 Disposal](#)
- [9 Battery Disposal](#)
- [10 Feedback and Help](#)
- [11 Documents / Resources](#)
 - [11.1 References](#)

Parts List



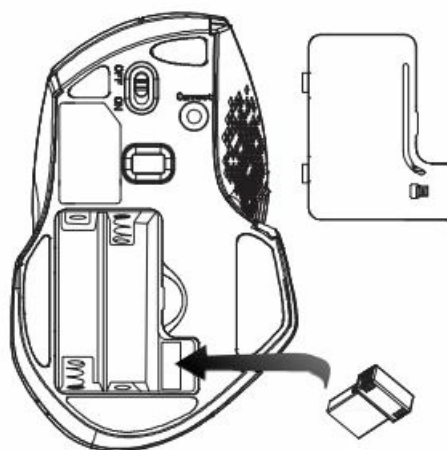
Setup

Installing the Batteries



- Remove the battery cover.
- Insert two AA batteries correctly with regard to polarity (+ and-) marked on the battery and the product.
- Place the cover back over the battery compartment.
- Slide the ON/OFF switch to ON to turn on the mouse.

Pairing



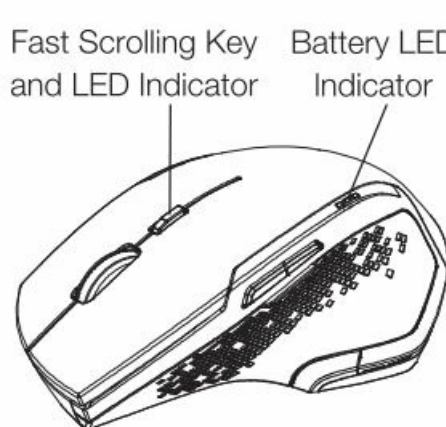
- Remove the battery cover, and take the nano receiver out.
- Plug the nano receiver into a USB port of your computer.

NOTE If the mouse is not connected, proceed as follows:

1. Remove the nano receiver from the USB port and plug it back in.

2. Press the Connect button of the mouse.

NOTE The LED indicator on the mouse flashes steadily when it is in pairing mode and stops blinking when it is successfully paired with the receiver.



Fast Scrolling Key and LED Indicator

Battery LED Indicator

Fast Scrolling Key and LED Indicator

LED is on for 3 sec.
Power ON

LED blinks for 10 sec.
During pairing (the LED goes off when pairing is successful or if no connection was established after 10 seconds.)

LED blinks for 10 sec.
Low battery warning

LED is on for 10 sec.
Fast scrolling activated

Battery LED indicator

When you switch on the mouse, all 3 LEDs will light up for 1 second. Right after that, the battery level will be displayed for approx. 4 seconds.

Battery level	
3 LEDs on	80 ~ 100%
2 LEDs on	50 ~ 70%
1 LED on	20 ~ 40%

Operation Controls

Forward

- Press this button to view the next page in your Internet browser.

Backward

- Press this button to view the previous page in your Internet browser.

Zoom

- Press this button and scroll the wheel to zoom in/out.

Windows

- Press this button to bring up the Windows Start Screen.

Scrolling Speed

1 - Standard	Activated by default. When in fast scrolling mode, press the fast scrolling key to return to standard scrolling.
2 - Fast	When in standard scrolling mode, press the fast scrolling key to activate fast scrolling.

Simplified EU Declaration of Conformity

- Hereby, Amazon EU Sari declares that the radio equipment type B078HWKTT3 is in compliance with Directive 2014/53/EU.
- The full text of the EU declaration of conformity is available at the following internet address:
https://www.amazon.co.uk/amazon_private_brand_EU_compliance

Intended Use

This product is a wireless computer peripheral intended for interacting with your computer.

Safety and Compliance

Read this instruction manual carefully before using the product. It contains important information for your safety as well as operating and maintenance advice. Observe all safety instructions to avoid damage through improper use! Follow all warnings on the product. Keep this instruction manual for future use. Should this product be passed on to a third party, then this instruction manual must be included.

- Never use this product if damaged.
 - Do not insert any foreign objects into the inside of the casing.
 - Protect the product from extreme temperatures, hot surfaces, open flames, direct sunlight, water, high humidity, moisture, strong jolts, flammable gases, vapors and solvents.
 - Keep this product and its packaging out of the reach of children and pets.
- ⚠ **CAUTION** Avoid looking directly into the beam.

Battery Warnings

- Always purchase the correct size and grade of battery most suitable for the intended use.
- Replace all batteries of a set at the same time.
- Clean the battery contacts and also those of the device prior to battery installation.
- Ensure the batteries are installed correctly with regard to polarity (+and-).
- Remove batteries from equipment that is not to be used for an extended period of time.
- Remove used batteries promptly.
- Keep batteries out of the reach of children.
- Do not mix old and new batteries or batteries of different types or brands.
- Do not dispose of batteries in fire.
- Store unused batteries in their original packaging away from metal objects. If already unpacked, do not mix or jumble batteries.
- Remove batteries from the product if it is not to be used for an extended period of time unless it is for emergency purposes. Depleted batteries should be immediately removed from product and properly disposed.
- If the battery leaks, avoid contact with skin and eyes. Rinse affected areas immediately with plenty of clean water, then consult a doctor.

Cleaning and Maintenance

- Clean the product with a dry lint-free cloth. Do not allow any water or other liquids enter the product's interior.

- Do not use abrasives, harsh cleaning solutions or hard brushes for cleaning.
- Clean the battery contacts and also those of the product prior to battery installation.

Specifications

Power Supply:	3 V (2 x 1.5 V AA battery)
Current consumption:	7 mA
Weight:	92.7 g
Dimensions:	12.6 x 8.2 x 4.5 cm
Encryption:	AES128
OS compatibility:	Windows 10 / 8 / 7, Mac OS 10.X and higher
Transmission power:	1 mW
Frequency band:	2.4 GHz (2.402 GHz - 2.480 GHz)

Disposal



The Waste Electrical and Electronic Equipment (WEEE) Directive aims to minimize the impact of electrical and electronic goods on the environment, by increasing re-use and recycling and by reducing the amount of WEEE going to landfill. The symbol on this product or its packaging signifies that this product must be disposed separately from ordinary household wastes at its end of life. Be aware that this is your responsibility to dispose of electronic equipment at recycling centres in order to conserve natural resources. Each country should have its collection centres for electrical and electronic equipment recycling. For information about your recycling drop off area, please contact your related electrical and electronic equipment waste management authority, your local city office, or your house hold waste disposal service.

Battery Disposal



Do not dispose of used batteries with your household waste. Take A them to an appropriate disposal collection site.

Feedback and Help

We would love to hear your feedback. To ensure we are providing the best customer experience possible, please consider warring a customer review.

amazon.co.uk/review/review-your-purchases#

If you need help with your Amazon Basics product, please use the webserver or number below.

amazon.co.uk/gp/help/customer/contact-us

