



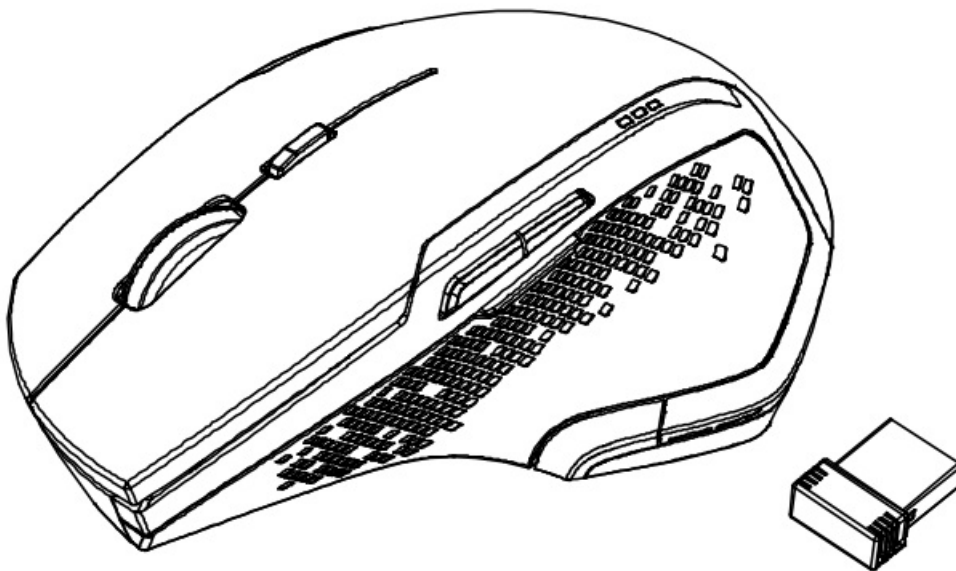
amazon basics B078HFRNSP Full Size Ergonomic Wireless Mouse User Guide

[Home](#) » [amazon basics](#) » amazon basics B078HFRNSP Full Size Ergonomic Wireless Mouse User Guide 

amazonbasics

Quick Start Guide

Full-Size Ergonomic Wireless Mouse with Fast Scrolling

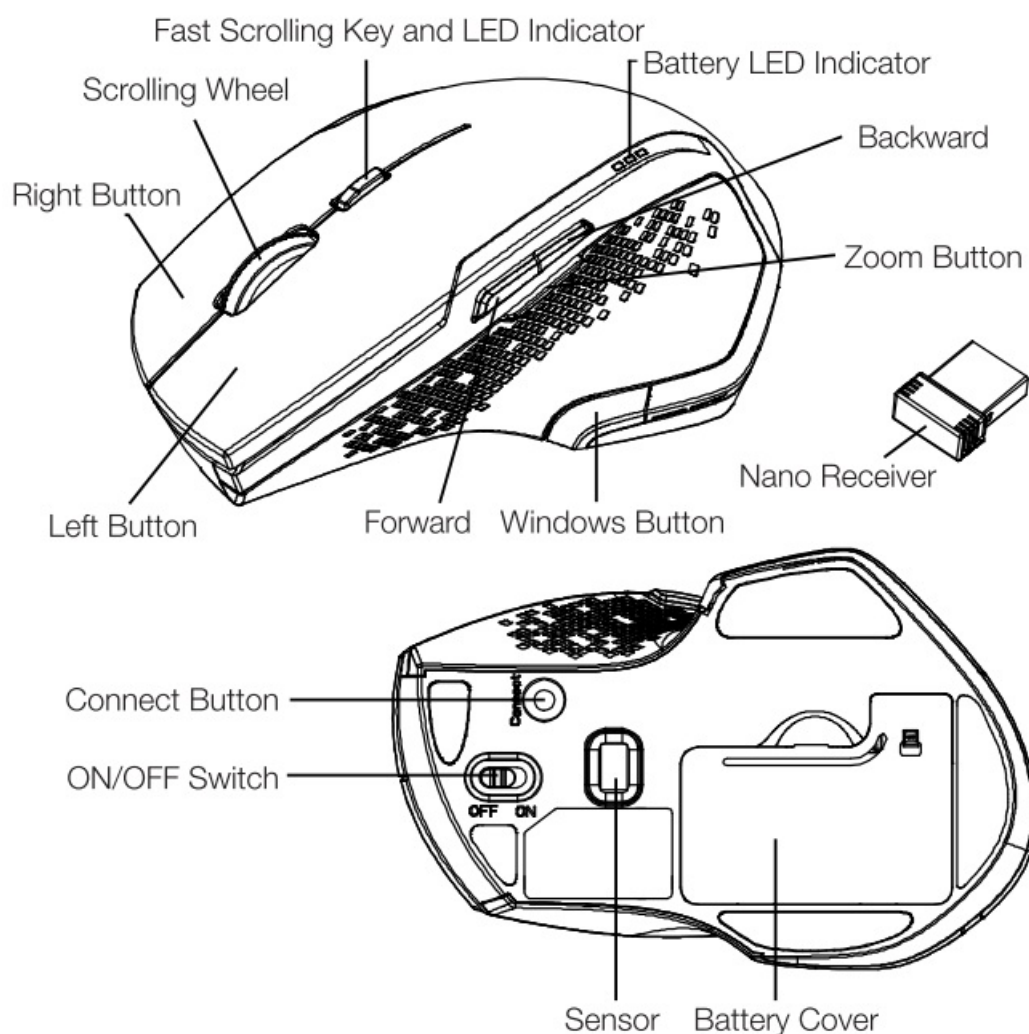


B078HFRNSP

Contents

- [1 Parts List](#)
- [2 Setup Installing the Batteries](#)
- [3 Operation Controls](#)
- [4 FCC Compliance Statement](#)
- [5 Intended Use](#)
- [6 Safety and Compliance](#)
- [7 Cleaning and Maintenance](#)
- [8 Specifications](#)
- [9 Feedback and Help](#)
- [10 Documents / Resources](#)
- [11 Related Posts](#)

Parts List

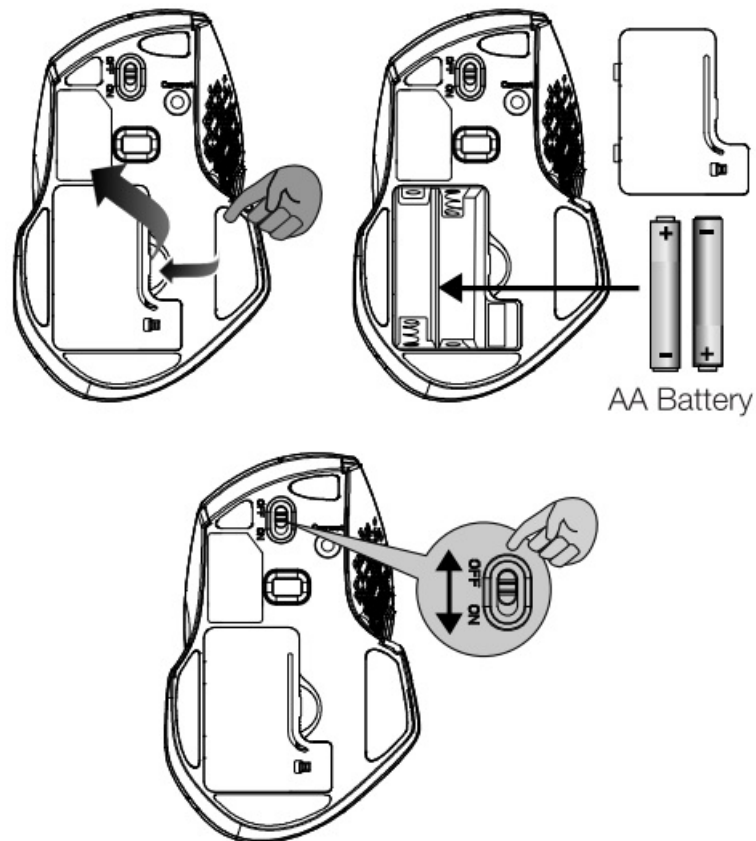


Setup Installing the Batteries

NOTE

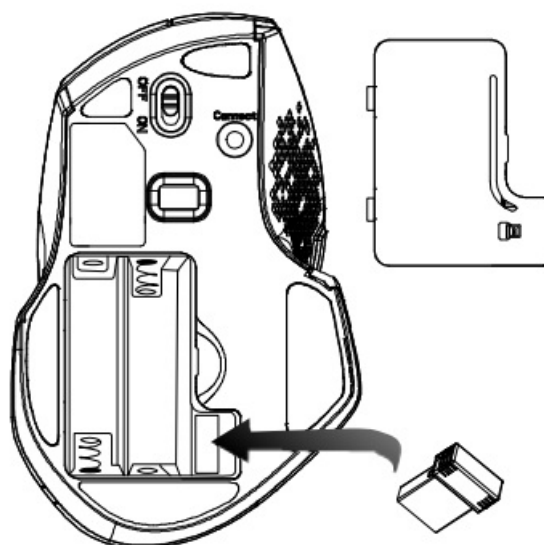
- Always purchase the correct size and grade of battery most suitable for the intended use.
- Clean the battery contacts and also those of the device prior to battery installation.
- Ensure the batteries are installed correctly with regard to polarity (+ and -)

- Remove batteries from equipment that is not to be used for an extended period of time. Remove used batteries promptly.



- Remove the battery cover.
- Insert two AA batteries correctly with regard to polarity (+ and -) marked on the battery and the product.
- Place the cover back over the battery compartment
- Slide the ON/OFF switch to ON to turn on the mouse.

Setup Pairing

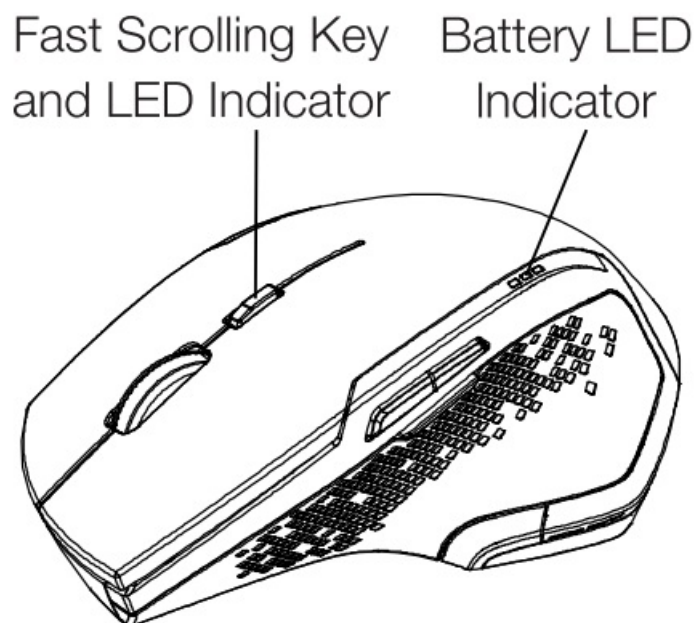


- Remove the battery cover, and take the nano receiver out.
- Plug the nano receiver into a USB port on your computer.

Note: If the mouse is not connected, proceed as follows:

1. Remove the nano receiver from the USB port and plug it back in
2. Press the Connect button of the mouse.

Note: The LED indicator on the mouse flashes steadily when it is in pairing mode and stops blinking when it is successfully paired with the receiver.



Fast Scrolling Key and LED Indicator

LED is on for 3 sec.

Power ON

LED blinks for 10 sec.

During pairing (the LED goes off when pairing is successful or if no connection was established after 10 seconds)

LED blinks for 10 sec.

Low battery warning

LED is on for 10 sec.

Fast scrolling activated

Battery LED indicator

When you switch on the mouse, all 3 LEDs will light up for 1 second. Right after that, the battery level will be displayed for approx 4 seconds.

	Battery level
3LEDs on	80~ 100%
2LEDs on	50-70%
1LED On	20 40%

Operation Controls

Forward

- Press this button to view the next page in your Internet browser.

Forward

- Press this button to view the next page in your Internet browser.

Zoom

- Press this button and scroll the wheel to zoom in/out

Windows

- Press this button to bring up the Windows Start Screen,

Scrolling Speed

1-Standard	Activated by default. When in fast scrolling mode, press the fast scrolling key to return to standard scrolling
2- Fast	When in standard scrolling mode, press the fast scrolling key to activate fast ling.

FCC Compliance Statement

1. This device complies with Part 15 of the FCC rules. Operation is subject to the following two conditions
 - (1) this device may not cause harmful interference, and
 - 2) this device must accept any interference received, including interference that may cause undesired operation.
2. Changes or modifications not expressly approved by the party responsible for compliance could void the user authority to operate the equipment.

FCC Interference Statement

This equipment has been tested and found to comply with the limits for a Class B digital device, pursuant to part 15 of the FCC Rules. These limits are designed to provide reasonable protection against harmful interference in residential installation.

"This equipment generates, uses and can radiate radio frequency energy and, if not installed and used in accordance with the instructions, may cause harmful interference to radio communications. However, there is no guarantee that interference will not occur in a particular installation. If this equipment does cause harmful interference to radio or television reception, which can be determined by turning the equipment off and on, the user is encouraged to try to correct the interference by one or more of the following measures:

- Reorient or relocate the receiving antenna,
- Increase the separation between the equipment and receiver
- Connect the equipment into an outlet on a circuit different from that to which the receiver is connected.
- Consult the dealer or an experienced radio/TV technician for help.

Canada IC Notice

- This device contains licence-exempt transmitter(s)/receiver(s) that comply with Innovation, Science and Economic Development Canada's licence-exempt RSS(s). Operation is subject to the following two conditions:
(1) this device may not cause interference, and
(2) this device must accept any interference, including interference that may cause undesired operation of the device,
- This equipment complies with Industry Canada radiation exposure limits set forth for an uncontrolled environment.
- This Class B digital apparatus complies with Canadian CAN ICES-003(8) /NMB-003(B) standard.

Intended Use

This product is a wireless computer peripheral intended for interacting with your computer

Safety and Compliance

Read this instruction manual carefully before using the product. It contains important information for your safety as well as operating and maintenance advice. Observe all safety instructions to avoid damage through improper use. Follow all warnings on the product. Keep this instruction manual for future use.

Should this product be passed on to a third party, then this instruction manual must be included,

- Never use this product if damaged.
- Do not insert any foreign objects into the inside of the casing.
- Protect the product from extreme temperatures, hot surfaces, open flames, direct sunlight, water, high humidity, moisture, strong fumes, flammable gases, vapours and solvents,
- Keep this product and its packaging out of the reach of children and pets.
- **CAUTION!** Avoid looking directly into the beam.

Battery Warnings

- **CAUTION:** Risk of fire and burns. Do not open, crush, heat above 140 °F (60 °C) or incinerate. Follow manufacturer's instructions.
- When used correctly, primary batteries provide a safe and dependable source of portable power. However, misuse or abuse may result in leakage, fire, or explosion.
- Always take care to install your batteries correctly observing the "+" and "-" marks on the battery and the device. Batteries which are incorrectly placed into some equipment may be short-circuited, or charged. This can result in a rapid temperature rise causing venting, leakage, explosion and personal injury.
- Always replace the whole set of batteries at one time, taking care not to mix old and new ones or batteries of different types. When batteries of different brand or type are used together, or new and old batteries are used together, some batteries may be over-discharged due to a difference of voltage or capacity. This can result in venting, leakage, and explosion and may cause personal injury.
- Keep batteries out of the reach of children, especially small batteries that could be easily ingested.
- Immediately seek medical attention if a cell or battery has been swallowed. Also, contact your local poison control center.
- Never dispose of batteries in fire. When batteries are disposed of in fire, the heat build-up may cause explosion and personal injury. Do not incinerate batteries except for approved disposal in a controlled

incinerator.

- Never attempt to recharge primary batteries. Attempting to charge a non-rechargeable (primary) battery may cause internal gas or heat generation resulting in venting, leakage, explosion and personal injury.
- Never short circuit batteries as this may lead to high temperatures, leakage, or explosion. When the positive (+) and negative (-) terminals of a battery are in electrical contact with each other, the battery becomes short-circuited. This may result in venting, leakage, explosion and personal injury.
- In the event that the electrolyte comes into contact with the skin or eyes, immediately flush with fresh water for at least 15 minutes and seek medical attention.
- Never heat batteries in order to revive them. When a battery is exposed to heat, venting, leakage and explosion may occur and cause personal injury.
- Never attempt to disassemble, crush, puncture or open batteries. Such abuse may result in venting, leakage, rupture, and cause personal injury.
- Remove discharged batteries from equipment promptly to avoid possible damage from leakage. When discharged batteries are kept in the equipment for a long time, electrolyte leakage may occur causing damage to the equipment and/or personal injury.
- Remember to switch off equipment after use. A battery that has been partially or completely exhausted may be more prone to leak than one that is unused.

Cleaning and Maintenance

- Clean the product with a dry lint-free cloth. Do not allow any water or other liquids enter the product's interior.
- Do not use abrasives, harsh cleaning solutions or hard brushes for cleaning.
- Clean the battery contacts and also those of the product prior to battery installation.

Specifications

Power Supply:	3V(2x 15V AA battery)
Current consumption;	30mA
Weigh:	92.79 (0:201bs)
Dimensions:	126x82x450m(Ex3.2×1.7in)
Enoryption:	AES128
08 compativity:	Windows 10/8 /7, Mac OS 10X and higher
Transmission pov	1w
Frequency band:	2.4 GHz (2.402 GHz – 2.480 GHz)

Battery Disposal



Do not dispose of used batteries with your household waste. Take ther to an appropriate disposal collection sit.

Feedback and Help

We would love to hear your feedback. To ensure we are providing the best customer experience possible, please consider writing a customer review.

Scan QR Code below with your phone camera or QR reader



https://www.amazon.com/review/review-your-purchases/listing/?ref=146530_UM_CR

If you need help with your Amazon Basics product, please use the website or number below.




amazon.com/gp/help/customer/contact-us



+1 877-485-0385



Documents / Resources

 <p>amazonbasics</p> <p>Full Size Ergonomic Wireless Mouse with Fast Charging</p> <p>Mouse includes rechargeable battery and fast charging cable.</p> <p>Dispositivo de mouse ergonómico</p> <p>Mouse ergonómico de tamaño completo con cable de carga rápida</p> <p>鼠标为人体工学设计，支持快速充电</p> <p>B078HFRNSP</p>	<p>amazon basics B078HFRNSP Full Size Ergonomic Wireless Mouse [pdf] User Guide</p> <p>C1THzuZvpdL, B078HFRNSP, B078HFRNSP Full Size Ergonomic Wireless Mouse, Full Size Ergonomic Wireless Mouse, Size Ergonomic Wireless Mouse, Ergonomic Wireless Mouse, Wireless Mouse, Mouse</p>
--	---

[Manuals+](#)