



## amazon basics B078F698CQ Compact Ergonomic Wireless Mouse User Guide

[Home](#) » [amazon basics](#) » amazon basics B078F698CQ Compact Ergonomic Wireless Mouse User Guide 

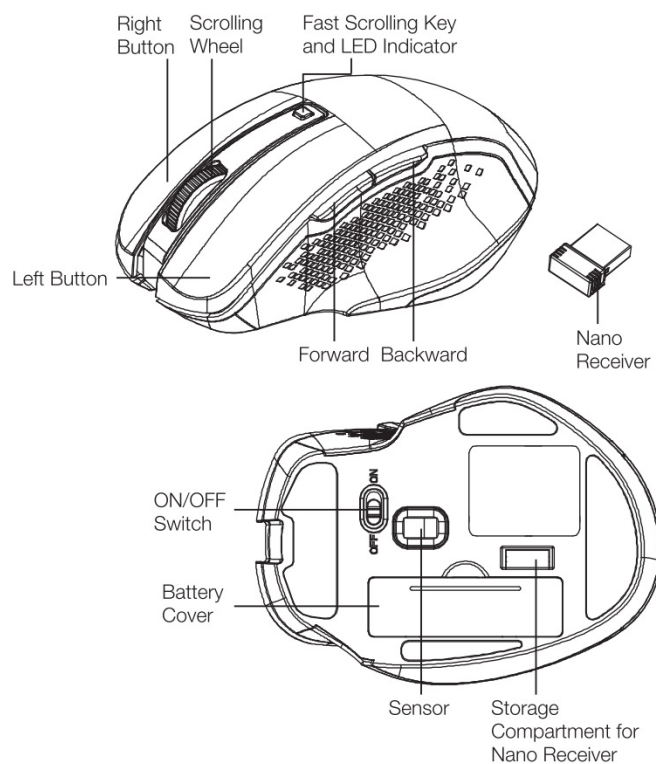
amazon basics B078F698CQ Compact Ergonomic Wireless Mouse User Guide



## Contents

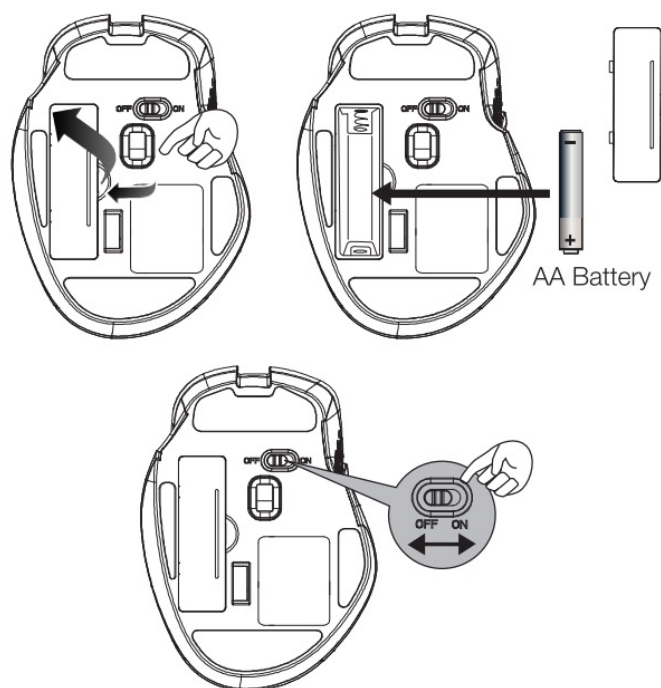
- 1 [Parts List](#)
- 2 [Setup](#)
- 3 [Pairing](#)
- 4 [Operation](#)
- 5 [FCC Compliance Statement](#)
- 6 [Canada IC Notice](#)
- 7 [Intended Use](#)
- 8 [Safety and Compliance](#)
- 9 [Battery Warnings](#)
- 10 [Cleaning and Maintenance](#)
- 11 [Specifications](#)
- 12 [Disposal](#)
- 13 [Battery Disposal](#)
- 14 [Documents / Resources](#)
  - 14.1 [References](#)
- 15 [Related Posts](#)

## Parts List



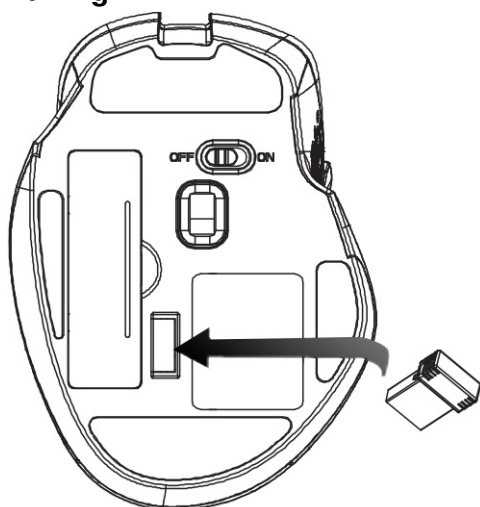
## Setup

### Installing The Battery



1. Take the battery cover off,
2. Insert one A battery correctly with regard to polarity (+ and -) marked on the battery and the product.
3. Replace the cover
4. Side the ON/OFF switch to ON position to tum on the mouse.

## Pairing



- Remove the nano receiver from its storage compartment.
- Plug the nano receiver into a USB port of your computer.

## NOTE

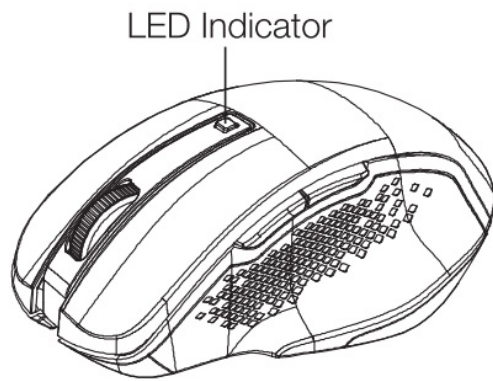
If the mouse is not connected, proceed as follows:

1. Remove the nano receiver from the USB port and plug it back in.
2. Switch the mouse off and on again.

## NOTE

The LED indicator on the mouse flashes steadily when it is in pairing mode and stops blinking when it is

successfully paired with the receiver.



#### **LED Indicator**

**LED is on for 3 sec.**

Power ON

**LED blinks for 10 sec.**

Low battery warning

**LED is on for 10 sec.**

Fast scrolling activated

### **Operation**

#### **Controls**

##### **Forward**

- Press this button to view the next page in your Internet browser.

##### **Backward**

- Press this button to view the previous page in your Internet browser.

##### **Scrolling Speed**

**Standard:** Activated by default. When in fast scrolling mode, press the fast scrolling key to return to standard scrolling.

**Fast:** When in standard scrolling mode, press the fast scrolling key to activate fast scrolling.

### **FCC Compliance Statement**

1. This device complies with Part 15 of the FCC rules. Operation is subject to the following two conditions
  1. this device may not cause harmful interference, and
  2. this device must accept any interference received, including interference that may cause undesired operation.
2. Changes or modifications not expressly approved by the party responsible for compliance could void the user's authority to operate the equipment.

### **FCC Interference Statement**

This equipment has been tested and found to comply with the limits for a Class B digital device, pursuant to part 15 of the FCC Rules. These limits are designed to provide reasonable protection against harmful interference in a residential installation. This equipment generates, uses and can radiate radio frequency energy and, if not installed and used in accordance with the instructions, may cause harmful interference to radio communications. However, there is no guarantee that interference will not occur in a particular installation. If this equipment does cause harmful interference to radio or television reception, which can be determined by turning the equipment off and on, the user is encouraged to try to correct the interference by one or more of the following measures:

- Reorient or relocate the receiving antenna.
- Increase the separation between the equipment and receiver.
- Connect the equipment into an outlet on a circuit different from that to which the receiver is connected.
- Consult the dealer or an experienced radio/TV technician for help.

## Canada IC Notice

- This device contains licence-exempt transmitter(s)/receiver(s) that comply with Innovation, Science and Economic Development Canada's licence- exempt RSS(s). Operation is subject to the following two conditions:
  1. this device may not cause interference, and
  2. this device must accept any interference, including interference that may cause undesired operation of the device.
- This equipment complies with Industry Canada radiation exposure limits set forth for an uncontrolled environment.
- This Class B digital apparatus complies with Canadian CAN ICES-003(B)/ NMB-003(B) standard.

## Simplified EU Declaration of Conformity

- Hereby, Amazon EU Sarl declares that the radio equipment type B078F698CQ, B0787BW96T, B0787GB9T4, B0787PGF9R, B0787D6SGT is in compliance with Directive 2014/53/EU.
- **The full text of the EU declaration of conformity is available at the following internet address:**  
[https://www.amazon.co.uk/amazon\\_private\\_brand\\_EU\\_compliance](https://www.amazon.co.uk/amazon_private_brand_EU_compliance)

## Intended Use

This product is a wireless computer peripheral intended for interacting with your desktop/laptop.

## Safety and Compliance

Read this instruction manual carefully before using the product. It contains important information for your safety as well as operating and maintenance advice. Observe all safety instructions to avoid damage through improper use! Follow all warnings on the product. Keep this instruction manual for future use. Should this product be passed on to a third party, then this instruction manual must be included,

- Never use this product if damaged.
  - Do not insert any foreign objects into the inside of the casing.

Protect the product from extreme temperatures, hot surfaces, open flames, direct sunlight, water, high humidity, moisture, strong jolts, flammable gases, vapours and solvents.

Keep this product and its packaging out of the reach of children and pets.



**CAUTION** Avoid looking directly into the beam.

## Battery Warnings

- Always purchase the correct size and grade of battery most suitable for the intended use.
- Replace all batteries of a set at the same time.
- Clean the battery contacts and also those of the device prior to battery installation.
- Ensure the batteries are installed correctly with regard to polarity (+ and -).
- Remove batteries from equipment that is not to be used for an extended period of time.
- Remove used batteries promptly.
- Keep batteries out of the reach of children.
- Do not dispose of batteries in fire.
- Store unused batteries in their original packaging away from metal objects. If already unpacked, do not mix or jumble batteries.
- Remove batteries from product if it is not to be used for an extended period of time unless it is for emergency purposes. Exhausted batteries should be immediately removed from product and properly disposed.
- If the battery leaks avoid contact with skin and eyes. Rinse affected areas immediately with plenty of clean water, then consult a doctor.

## Cleaning and Maintenance

- Clean the product with a dry lint-free cloth. Do not allow any water or other liquids enter the product's interior.
- Do not use abrasives, harsh cleaning solutions or hard brushes for cleaning.
- Clean the battery contacts and also those of the product prior to battery installation.

## Specifications

**Power Supply:** 1.5 V AA battery

**Current consumption:** 30 mA

**Weight:** 0.17 lbs (76.9 g)

**Dimensions:** 4.3 x 3.0 x 1.6 in (10.9 x 7.7 x 4.1 cm)

**Encryption:** AES128

**OS compatibility:** Windows 10/8/7

**Transmission power:** 1 mW

**Frequency band:** 2.4 GHz (2.402 GHz-2.480 GHz)

## Disposal



The Waste Electrical and Electronic Equipment (WEEE) Directive aims to minimise the impact of electrical and electronic goods on the environment, by increasing re-use and recycling and by reducing the amount of WEEE going to landfill. The symbol on this product or its packaging signifies that this product must be disposed separately from ordinary household wastes at its end of life. Be aware that this is your responsibility to dispose of electronic equipment at recycling centers in order to conserve natural resources. Each country should have its collection centers for electrical and electronic equipment recycling. For information about your recycling drop off

The image displays the Amazon Basics logo in the top left corner. Below it is a photograph of the B078F698CQ Compact Ergonomic Wireless Mouse, which is a small, light-colored mouse with a scroll wheel and two main buttons. To the right of the mouse image is a list of product titles, with the first one, 'amazon basics B078F698CQ Compact Ergonomic Wireless Mouse [pdf] User Guide', highlighted in blue. The other titles in the list are: 'B078F698CQ Compact Ergonomic Wireless Mouse', 'B078F698CQ, Compact Ergonomic Wirel', 'ess Mouse', 'Ergonomic Wireless Mouse', 'Wireless Mouse', and 'Mouse'.

## References

- [User Manual](#)

Manuals+.