

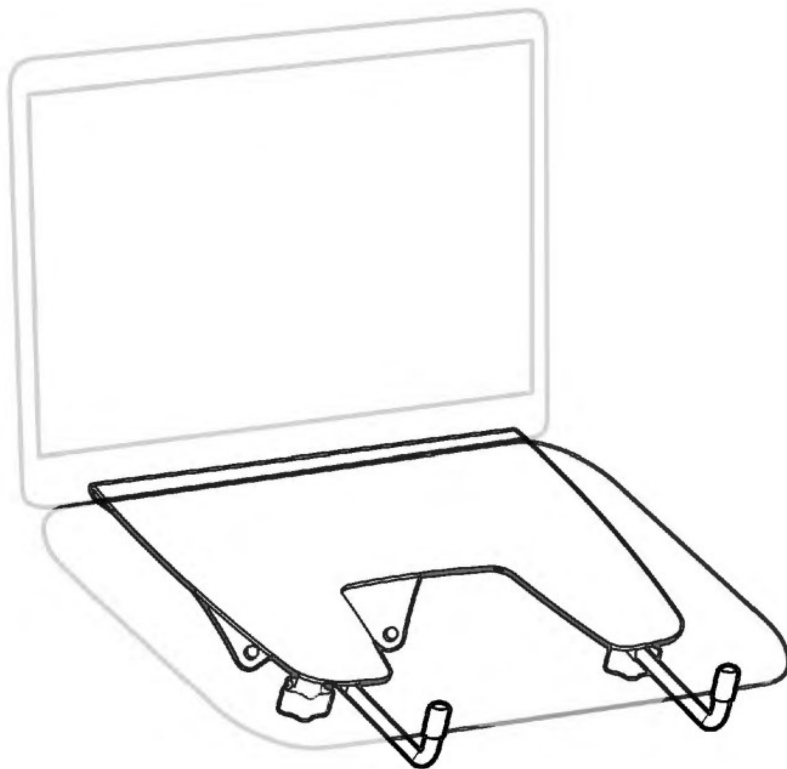


amazon basics B010QZD616 Notebook Arm Mount Tray User Guide

[Home](#) » [amazon basics](#) » amazon basics B010QZD616 Notebook Arm Mount Tray User Guide 

amazon basics

B010QZD616
User Guide



Notebook Arm Mount Tray

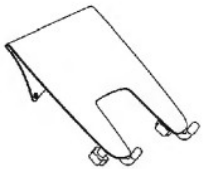







Contents

- 1 Welcome Guide
- 2 IMPORTANT SAFEGUARDS
- 3 Assembly
- 4 Warranty Information
- 5 Documents / Resources
- 5.1 References

Welcome Guide

Contents:

Before getting started, ensure the package contains the following components:

A		x1	E	 M3 x 6 mm	x1
B		x3	F	 M4 x 10 mm	x4
C		x2	G		x2
D	 M4 x 10 mm	x4	H		x2

You will need



IMPORTANT SAFEGUARDS



Read these instructions carefully and retain them for future use. If this product is passed to a third party, then these instructions must be included.

When using the product, basic safety precautions should always be followed to reduce the risk of injury including the following:

- This product will need tension adjustments after installation is complete. Make sure that all equipment is properly installed on the product before attempting range of motion or tension adjustments. Any time equipment is added or changed on this product resulting in a different mounted weight, you should repeat the adjustment steps to ensure safe and optimum operation. This product should move smoothly and easily through the full range of motion and stay where you set it. If movement is difficult or the product does not stay where you set it, follow the adjustment instructions to loosen or tighten the tension to create a smooth, easy motion. Depending on your product and the adjustment, it may take many turns to notice a difference.

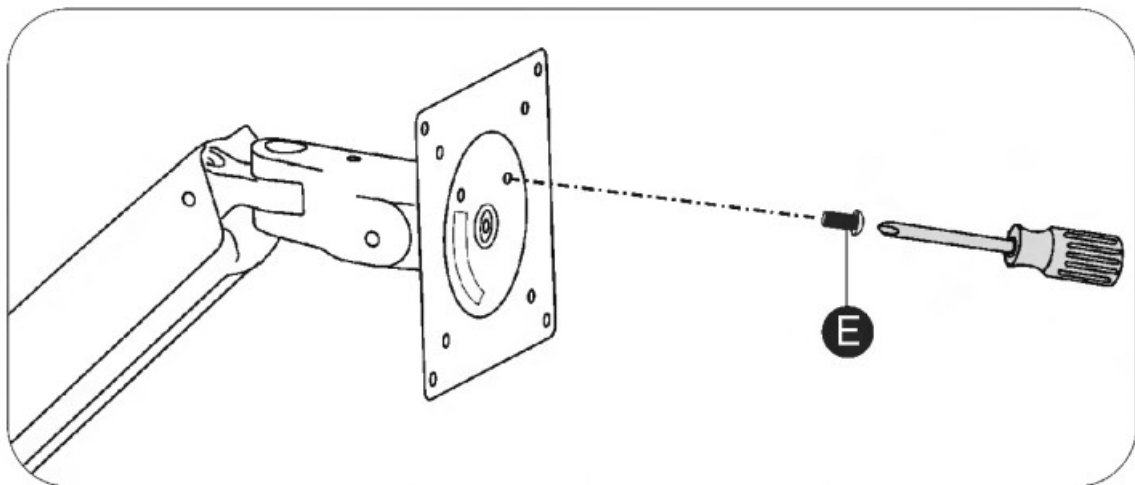
Before First Use

- Check for transport damages.

⚠ DANGER Risk of suffocation! Keep any packaging materials away from children — these materials are a potential source of danger, e.g. suffocation.

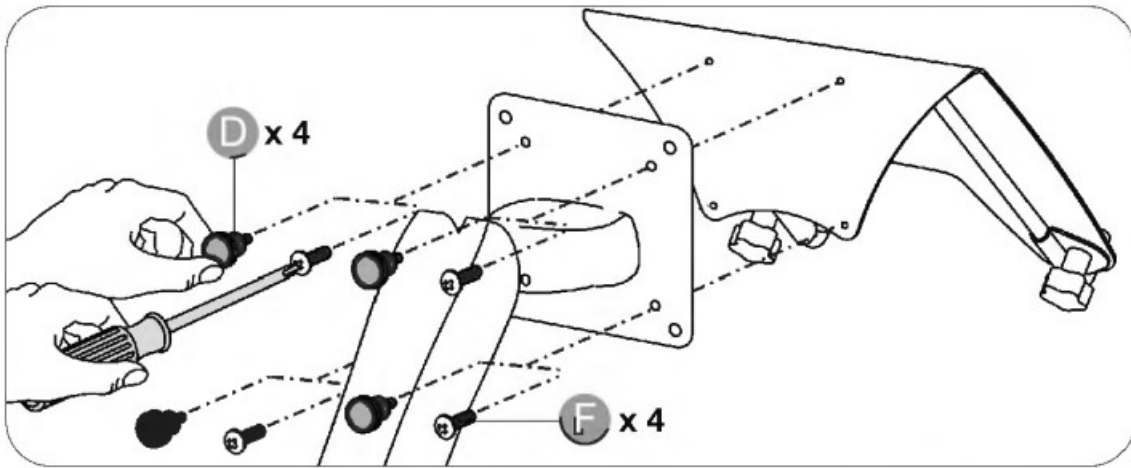
Assembly

Step 1: Lock the arm orientation



- On your existing mount arm, insert the M3 x 6 mm screw into the front of the plate to lock its orientation.

Step 2: Attach the notebook tray



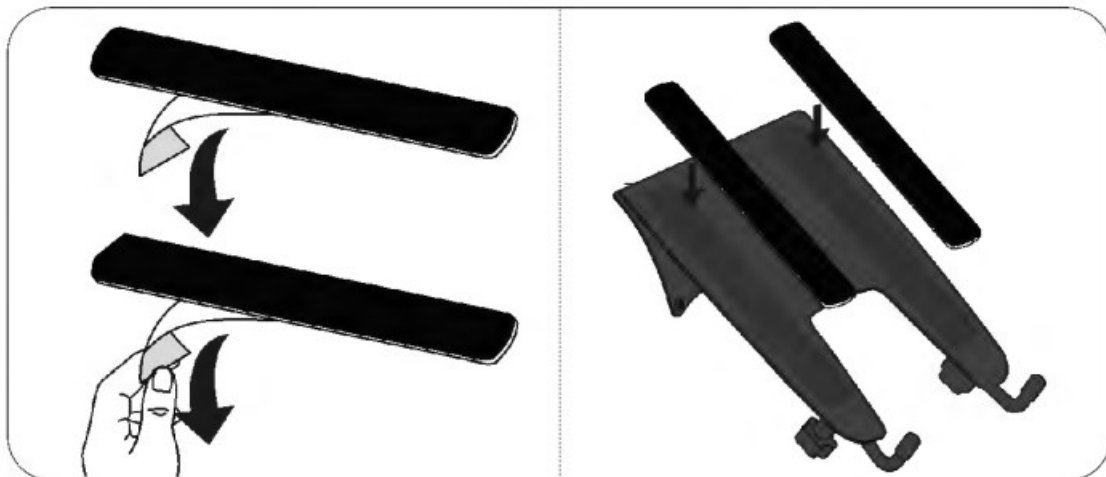
- Attach the notebook tray to the mounting plate with either the M4 x 10 mm screws and a screwdriver or the M4 x 10 knobs. Hand-tighten the knobs.

Step 3: Determine the connection method

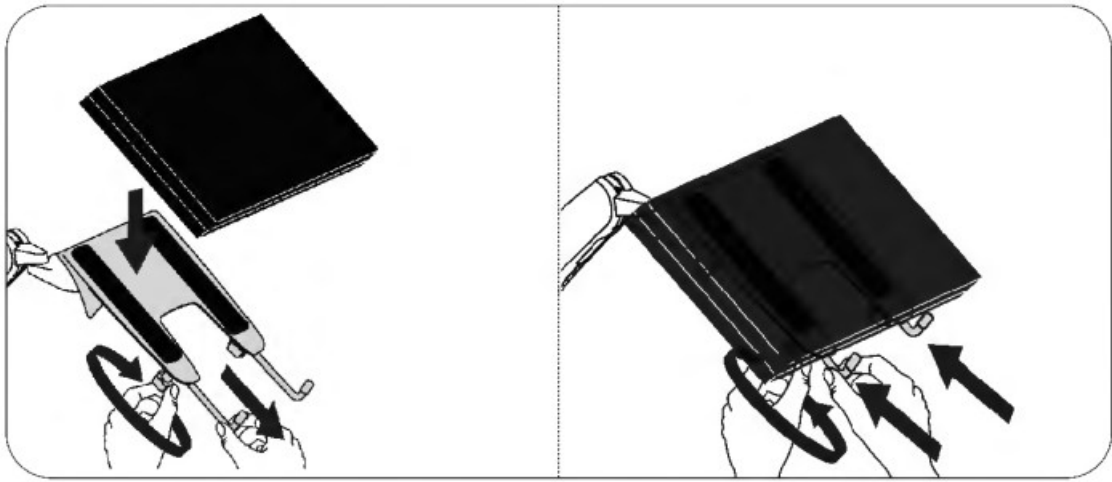
You can place your notebook:

- Directly on the notebook tray.
- On a docking station (not included) that is mounted to the notebook tray.

Notebook tray

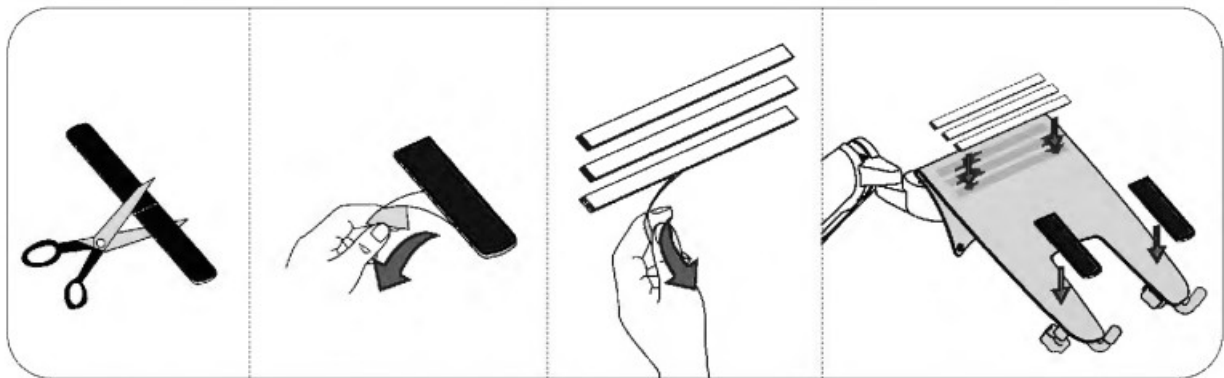


Step A: Remove the backing from the non-slip pads, then place them on the notebook tray (as shown).

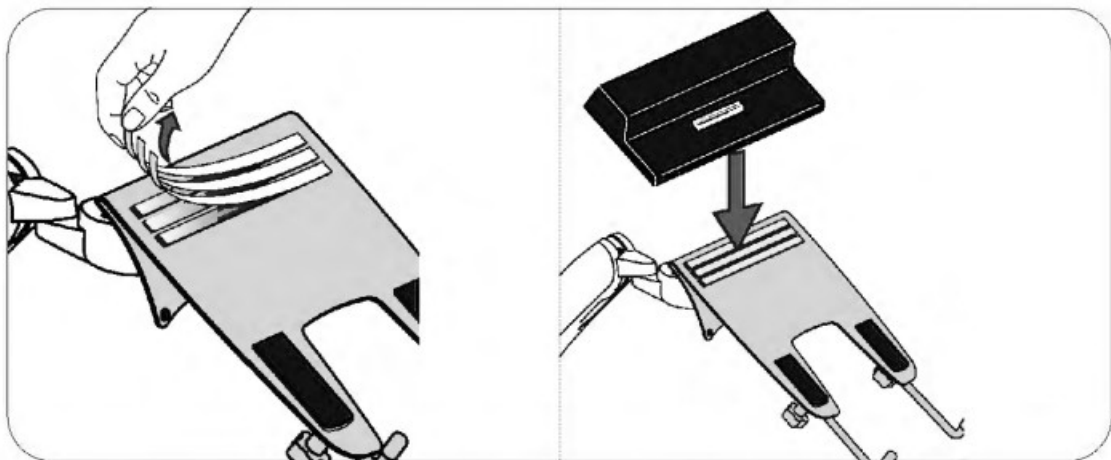


- **Step B:** Loosen the adjustment knobs underneath the notebook tray to adjust the length of the notebook tray legs, and place notebook on the tray. Then tighten to secure. Your notebook should fit snugly against the notebook tray legs.
- **Step C:** See “Step 4: Adjust your arm’s tension” on page 8 to adjust your notebook arm’s tension.

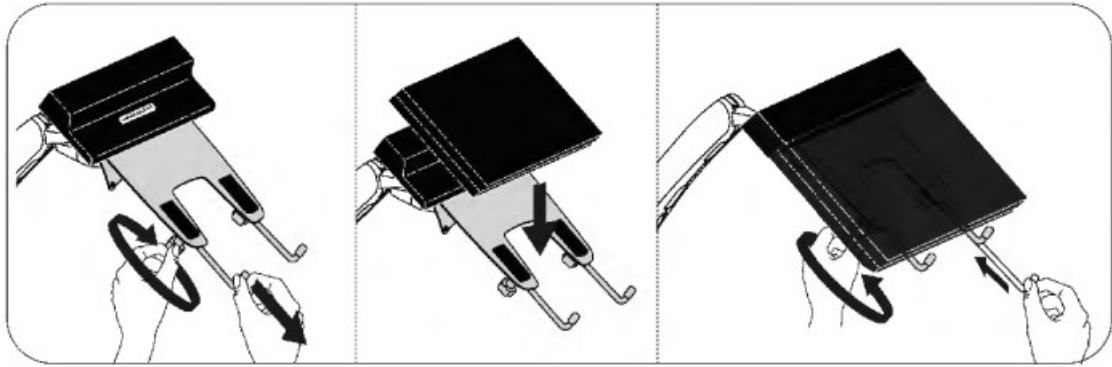
Docking station



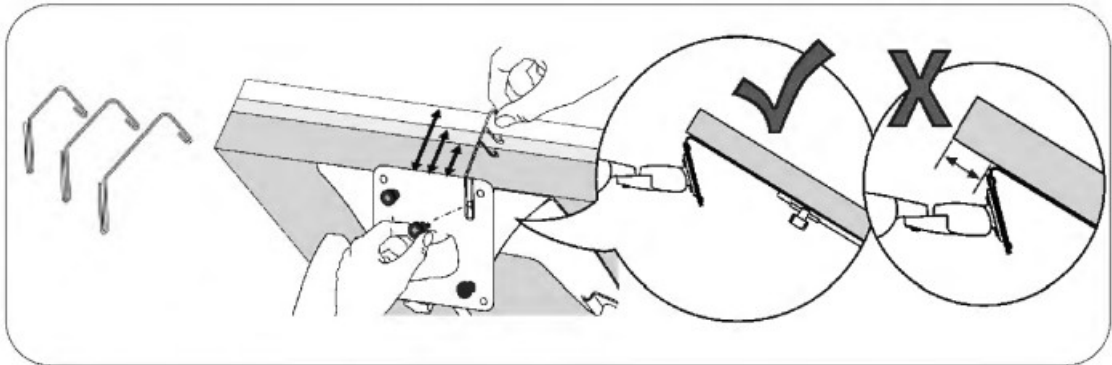
- **Step A:** Cut the non-slip pads in half, remove the backing, then place them on the notebook tray (as shown).



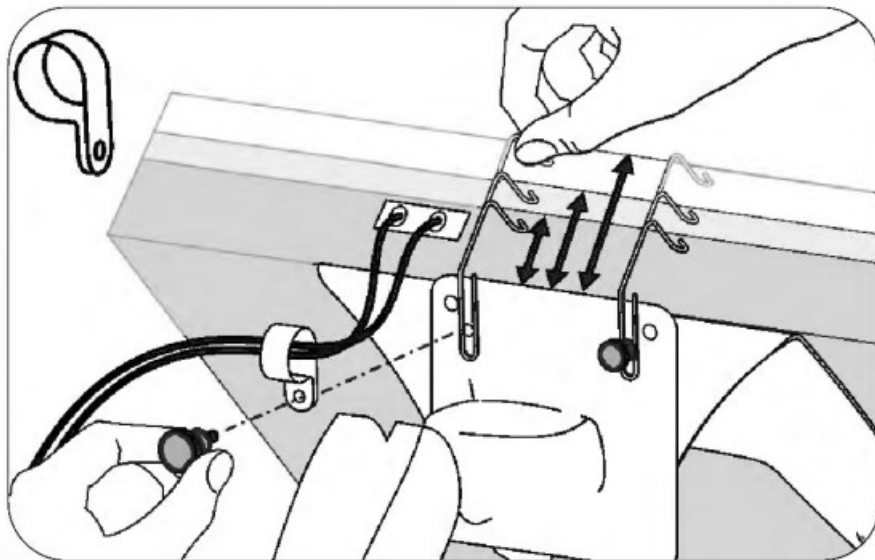
- **Step B:** Remove the backing from the three adhesive strips on the notebook tray, then firmly press your docking station onto the strips. The back of the docking station should be flush with the back of the notebook tray.



- **Step C:** Loosen the adjustment knobs underneath the notebook tray to adjust the length of the notebook tray legs, and place notebook on the tray. Then tighten to secure. Your notebook should fit snugly against the notebook tray legs.

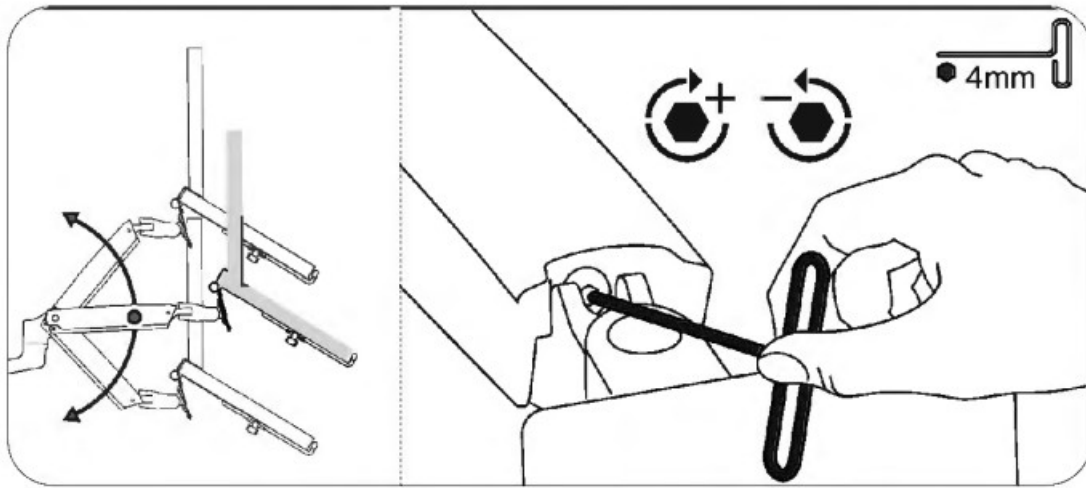


- **Step D:** Measure a small, medium, and large hook against the back of the notebook tray and docking station, then pick the hook that fits around it best. One at a time, loosen the top mounting screws on the arm, then slide the hook around the screw and your docking station. Tighten the mounting screw to hold the hook in place.



NOTICE You can also remove a mounting screw to attach the cable clip.

Step 4: Adjust the mounting arm tension



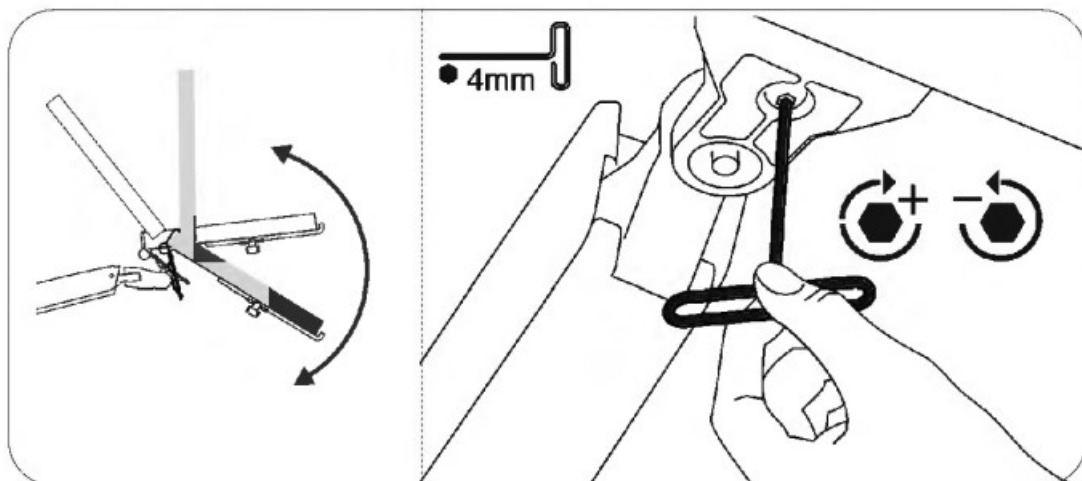
Adjust your notebook mount's tension. You can adjust the vertical, tilt, and arm tension so that the notebook stays in place when you move it.

Adjusting the vertical tension

Tilt the notebook down to access the screw. If the notebook is rising up, loosen the screw by turning it to the left. If the notebook is falling down, tighten the screw by turning it to the right.

⚠ CAUTION Do not over-tighten the screw. You might damage your notebook mount.

Adjusting the tilt tension



If the notebook tray is falling forward (tilts towards floor), loosen the screw by turning it to the left. If the notebook tray is falling back (tilts toward ceiling), tighten the screw by turning it to the right.

⚠ CAUTION Do not remove the screw. The notebook tray might fall.

⚠ CAUTION Do not over-tighten the screw. You might damage your notebook mount.

Warranty Information

To obtain a copy of the warranty for this product:

📄 US: [amazon.com/AmazonBasics/Warranty](https://www.amazon.com/AmazonBasics/Warranty)

📄 UK: [amazon.co.uk/basics-warranty](https://www.amazon.co.uk/basics-warranty)


📞 US: +1-866-216-1072

📞 UK: +44 (0) 800-279-7234

Feedback and Help

Love it? Hate it? Let us know with a customer review. AmazonBasics is committed to delivering customer-driven products that live up to your high standards. We encourage you to write a review sharing your experiences with the product.

📄 US: [amazon.com/review/review-your-purchases#](https://www.amazon.com/review/review-your-purchases#)

UK: amazon.co.uk/review/review-your-purchases#
 US: amazon.com/gp/help/customer/contact-us
UK: amazon.co.uk/gp/help/customer/contact-us




amazon.com/AmazonBasics

MADE IN CHINA



Documents / Resources

	<p>amazon basics B010QZD616 Notebook Arm Mount Tray [pdf] User Guide B010QZD616 Notebook Arm Mount Tray, B010QZD616, Notebook Arm Mount Tray, Arm Mount Tray, Mount Tray, Tray</p>
--	---

References

- [User Manual](#)