

[Skip to content](#)

Manuals+

User Manuals Simplified.



amazon basics B00NUS53CY 4-Shelf Shelving Unit User Manual

[Home](#) » [amazon basics](#) » amazon basics B00NUS53CY 4-Shelf Shelving Unit User Manual

Contents [hide](#)

[1 amazon basics B00NUS53CY 4-Shelf Shelving Unit](#)

[2 Contents](#)

[3 Assembly](#)

[4 Cleaning and Maintenance](#)

[5 Safety and Compliance](#)

[6 Specifications](#)

[7 Warranty Information](#)

[8 Documents / Resources](#)

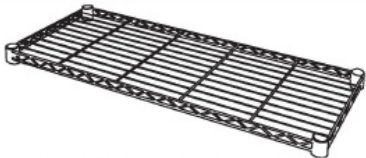
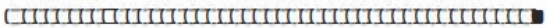
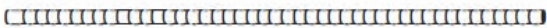



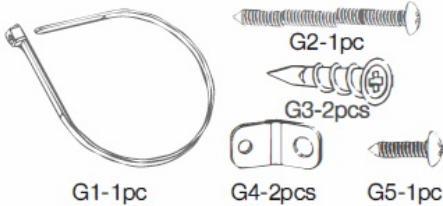
[9 Related Posts](#)



amazon basics B00NUS53CY 4-Shelf Shelving Unit



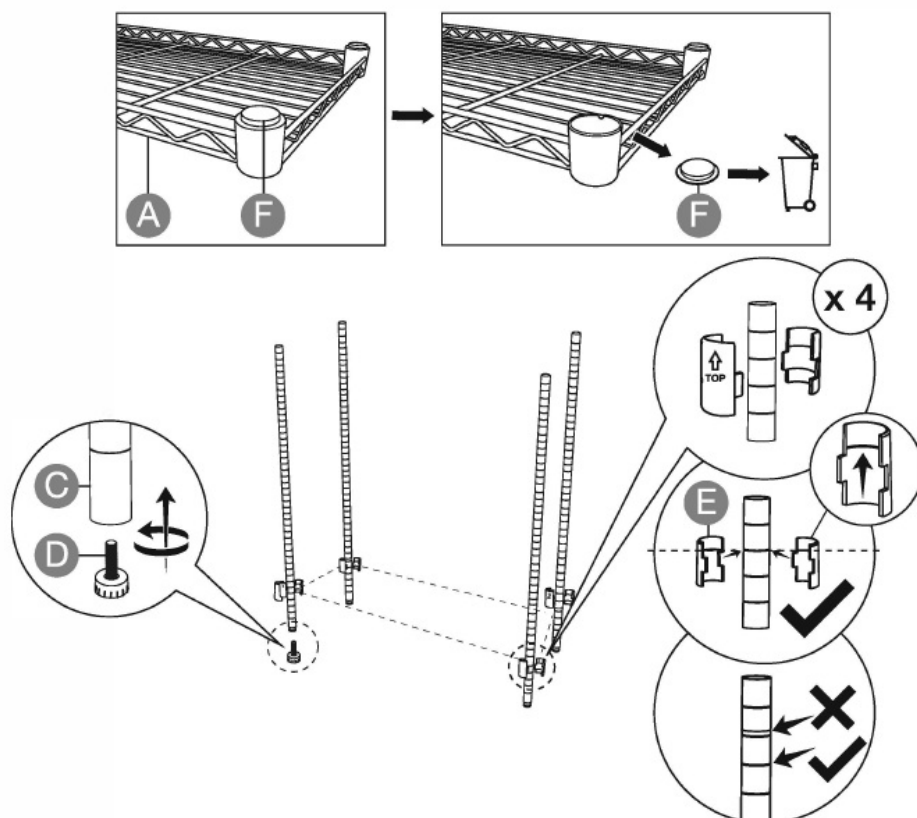
Contents

A		x4
B		x4
C		x4
D		x4
E		x16
F		x12
G	 <p>G1-1pc G2-1pc G3-2pcs G4-2pcs G5-1pc</p>	x1

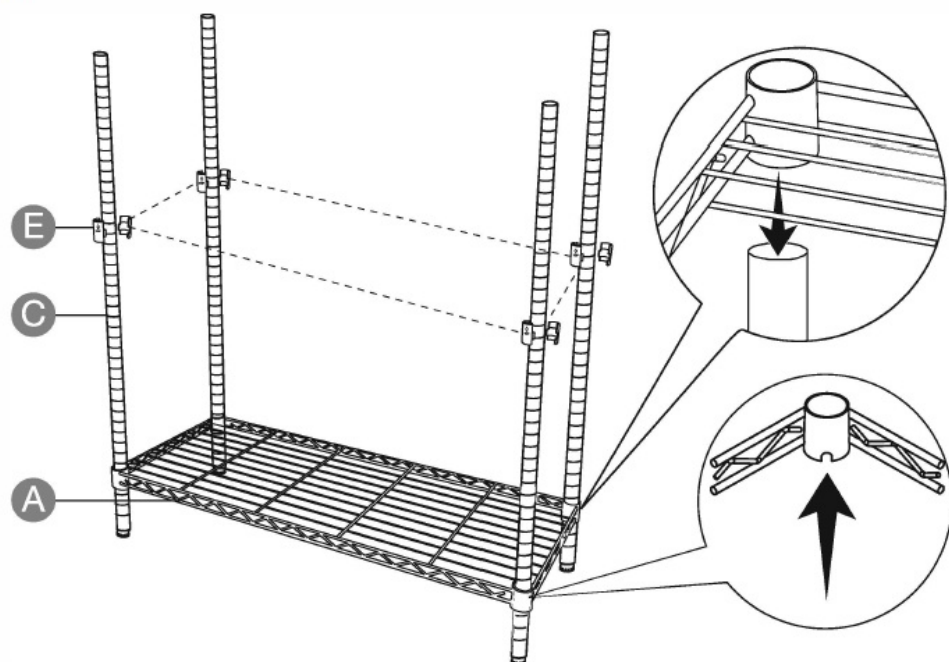
NOTICE Discard the protective covers. These are used to separate the shelves for shipping purposes.

Assembly

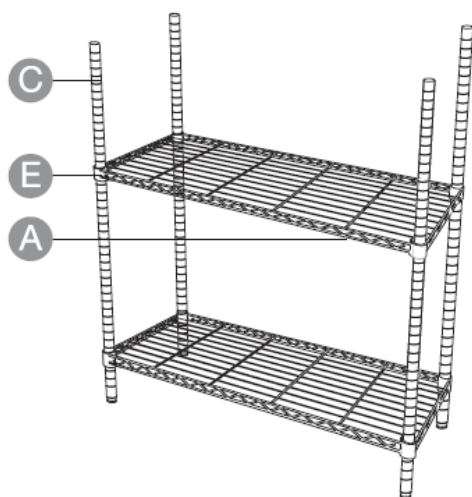
1:



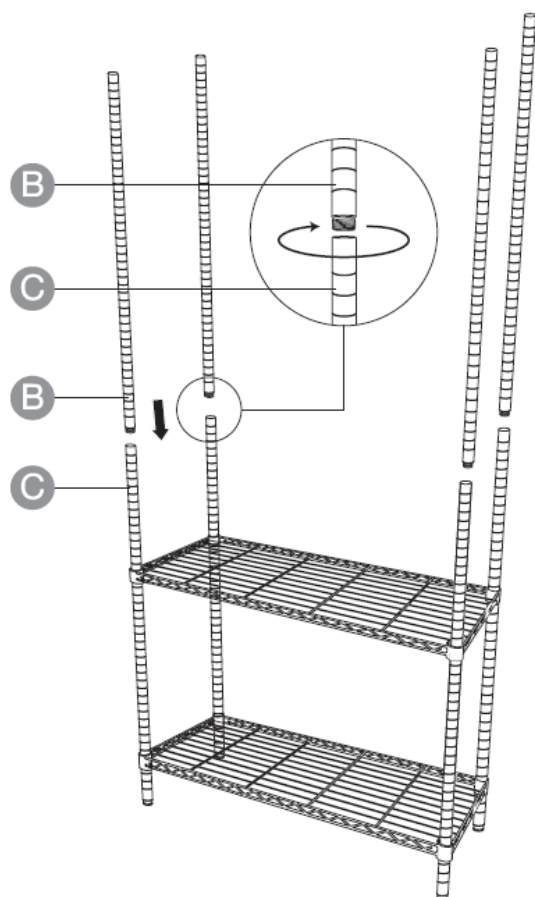
2:



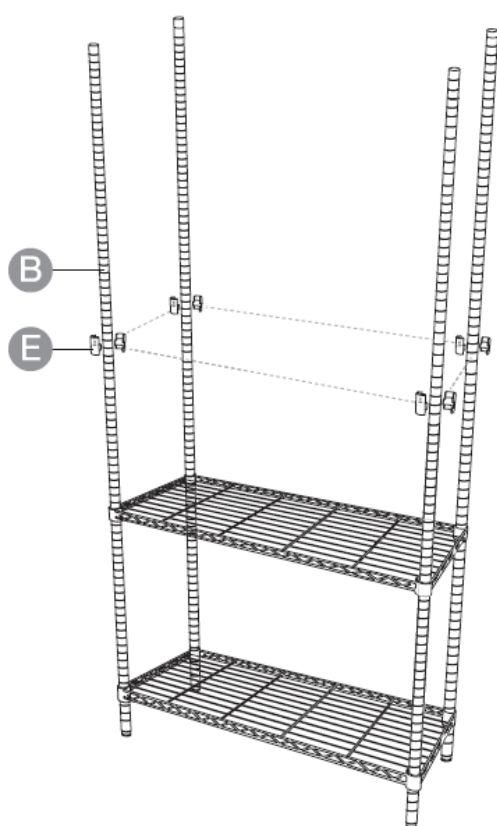
3:



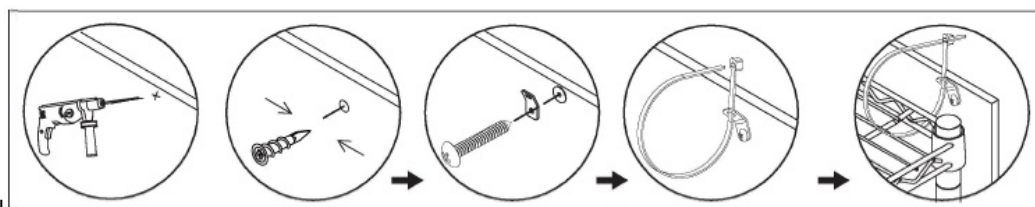
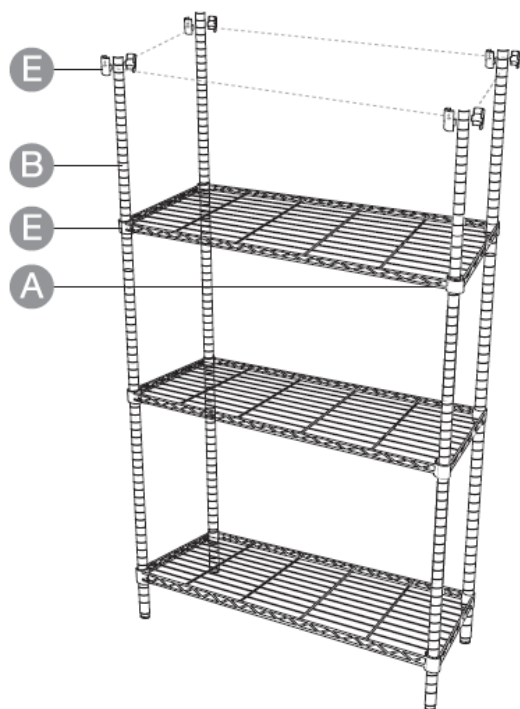
4



5:

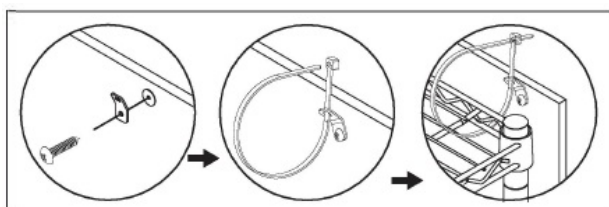


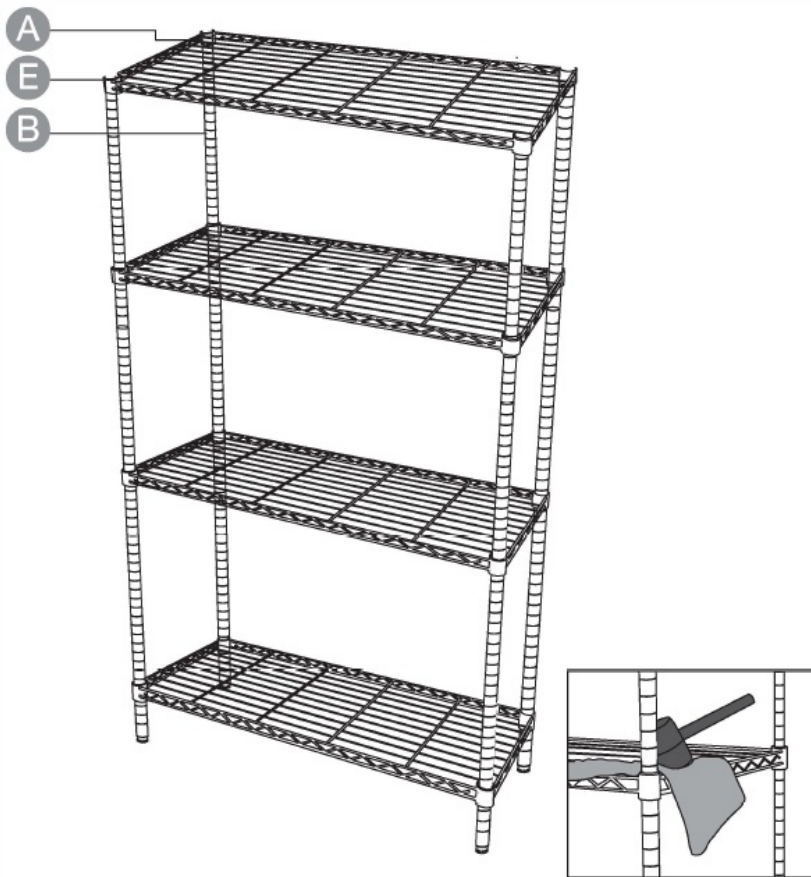
6:



Concrete/plasterboard wall

Wooden Wall





Cleaning and Maintenance

- Wipe with a dry cloth as needed to remove dust and dirt.
- Avoid contact with corrosive substances like acids, alkaline or similar substances.

Safety and Compliance

WARNING Do not let children climb on or play with the unit.

- Handle with care.
- For ease and efficiency, the product should be assembled by two adults.
- Regularly check if all screw connections are tight and if all shelves are attached in a stable way.
- To avoid scratching the floor, assemble the shelving unit on a soft surface such as a carpet.

WARNING Make sure not to drill into water or electricity lines when securing the shelving unit on the wall. Use a wire tracer and/or a water pipe finder if necessary.

- Load the unit evenly and place the heaviest items on the lower shelves.
- Young children may be injured by tipping furniture and the use of a tipping restraint is mandatory requested.

Specifications

Maximum Load	US Standard	Metric
Shelving unit:	1400 lbs	635 kg
One single shelf:	350 lbs	159 kg
Dimensions (L x W x H):	36" x 14" x 54"	91.4 x 35.5 x 137.1 cm
Net weight:	22.69 lbs	10.3 kg

Warranty Information

To obtain a copy of the warranty for this product:

- **US:** amazon.com/AmazonBasics/Warranty
- **UK:** amazon.co.uk/basics-warranty
- **US:** +1-866-216-1072
- **UK:** +44 (0) 800-279-7234

Feedback and Help

Love it? I hate it? Let us know with a customer review.

AmazonBasics is committed to delivering customer-driven products that live up to your high standards. We encourage you to write a review sharing your experiences with the product.

- **US:** amazon.com/review/review-your-purchases#
- **UK:** amazon.co.uk/review/review-your-purchases#
- **US:** amazon.com/gp/help/customer/contact-us
- **UK:** amazon.co.uk/gp/help/customer/contact-us

amazon.com/AmazonBasics

Documents / Resources



[amazon basics B00NUS53CY 4-Shelf Shelving Unit](#) [pdf] User Manual

B00NUS53CY 4-Shelf Shelving Unit, B00NUS53CY, 4-Shelf Shelving Unit, Shelf Shelving Unit, Shelving Unit, Unit

[Manuals+](#),

- [home](#)
- [privacy](#)