



amazon basics B00BCEJ0E0 Wireless Remote Control for Canon Digital SLR Camera Instruction Manual

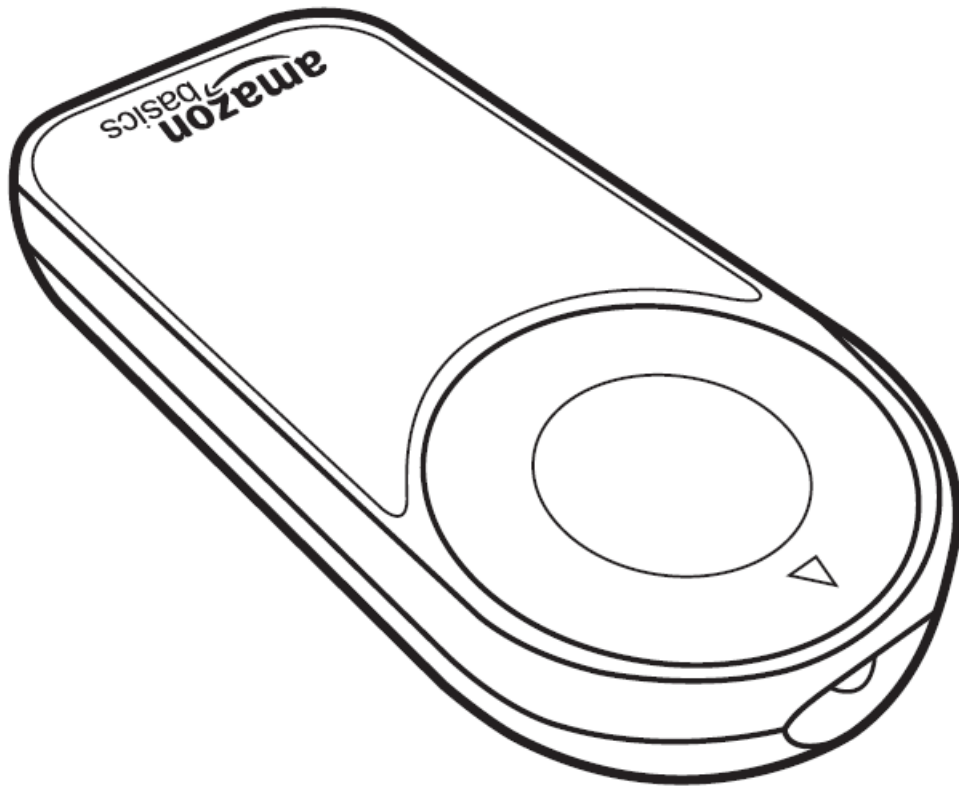
[Home](#) » [amazon basics](#) » amazon basics B00BCEJ0E0 Wireless Remote Control for Canon Digital SLR Camera Instruction Manual 

Contents

- [1 amazon basics B00BCEJ0E0 Wireless Remote Control for Canon Digital SLR Camera](#)
- [2 Important Safeguards](#)
- [3 Contents](#)
- [4 Features](#)
- [5 Using your remote](#)
- [6 Replacing the battery](#)
- [7 FCC – Supplier’s Declaration of Conformity](#)
- [8 Disposal](#)
- [9 Documents / Resources](#)
- [10 Related Posts](#)

amazon basics

amazon basics B00BCEJ0E0 Wireless Remote Control for Canon Digital SLR Camera



Important Safeguards

Warning: Keep out of Reach of Children.

- Care should be taken to prevent infants and children from putting the battery or other small parts in their mouths. Only use the specified battery (CR2025 3V).
- Keep the new or used batteries away from children. If the battery compartment does not close securely, or stop using the product and keep it away from children
- When disposing of batteries, do not put in household trash. Instead, give them to the collection station or dispose of them at special garbage depot.
- Remove empty batteries from the product.
- The batteries are non-rechargeable and must not be recharged.
- Do not use different types of batteries, mix new and used batteries, or mix alkaline, standard (carbon-zinc), or rechargeable batteries.
- Do not short-circuit connector clips.
- The product contains a coin battery. If the coin battery is swallowed, it can cause severe internal burns in just 2 hours and can lead to death. If you think batteries might have been swallowed or placed inside any part of the body, seek immediate medical attention.

Contents



- Wireless remote
- CR2025 battery (pre-installed)
- Plush carrying pouch
- This instruction manual

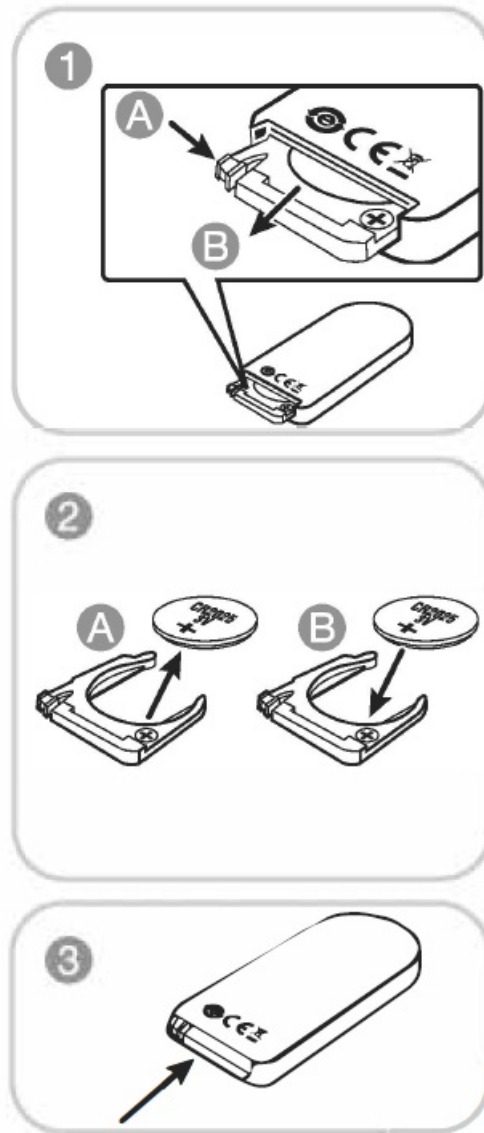
Features

- Triggers the shutter without disturbing the camera
- 9 in (3 m) wireless range

Using your remote

1. Remove the plastic tab.
2. . Locate the Shutter Release or Time Delay mode on your camera (the mode name may vary depending on your model). See your camera's user manual for more information.
3. Aim the remote at the camera and press the button.

Replacing the battery



Battery Warning Statement:

- Keep the battery out of the reach of children.
- Insert the battery in the proper direction as indicated by positive(+) and negative(-) markings in the battery holder.
- Remove a depleted battery promptly and recycle or dispose of it in accordance with Local and National Disposal Regulations.
- If a battery leaks, remove it and recycle or dispose of it in accordance with battery manufacturer's instructions and Local and National Disposal Regulations. Before inserting a new battery, thoroughly clean the compartment with a damp paper towel or follow battery manufacturer's recommendations for cleanup. If fluid from the battery comes into contact with skin or clothes, flush with water immediately.
- Remove the battery if your device is to be stored for an extended period of time without being used.

The AmazonBasics Wireless Remote will work with these Canon cameras:

- EOS 5DSR
- EOS 50S
- EOS 5D Mark4

- EOS 5D Mark3
- EOS 5D Mark 2
- EOS 6D Mark 2
- EOS 6D
- EOSR6
- EOSR5
- EOS 7D Mark 2
- EOS 7D
- EOS 90D
- EOS 80D
- EOS 70D
- EOS 600a (Note 1)
- EOS 60D
- EOS 8000, REBEL T7i
- EOS 750D, REBEL T6i, Kiss X8i
- EOS 760D
- EOS 700D
- EOS 100D
- EOS650D
- EOS 600D (Rebel T3i)
- EOS550D
- EOS500D
- EOS450D
- EOS400D
- EOS350D
- EOS300D
- EOSM
- EOSM2
- EOSM3
- EOSM5
- EOSM6

FCC – Supplier's Declaration of Conformity

Unique Identifier	B00BCEJ0E0 AmazonBasics Wireless Remote Control for Canon Cameras
Responsible Party	Amazon.com Services, Inc
U.S. Contact Information	410 Terry Ave N. Seattle, WA 98109, United States
Telephone Number	(206) 266-1000

FCC Compliance Statement

1. This device complies with Part 15 of the FCC rules. Operation is subject to the following two conditions:
 1. this device may not cause harmful interference, and
 2. this device must accept any interference received, including interference that may cause undesired operation.
2. Changes or modifications not expressly approved by the party responsible for compliance could void the user's authority to operate the equipment.

FCC Interference Statement

This equipment has been tested and found to comply with the limits for a Class B digital device, pursuant to part 15 of the FCC Rules. These limits are designed to provide reasonable protection against harmful interference in a residential installation. This equipment generates, uses and can radiate radio frequency energy and, if not installed and used in accordance with the instructions, may cause harmful interference to radio communications. However, there is no guarantee that interference will not occur in a particular installation. If this equipment does cause harmful interference to radio or television reception, which can be determined by turning the equipment off and on, the user is encouraged to try to correct the interference by one or more of the following measures:

- Reorient or relocate the receiving antenna.
- Increase the separation between the equipment and receiver.

- Connect the equipment into an outlet on a circuit different from that to which the receiver is connected.
- Consult the dealer or an experienced radio/TV technician for help.

Disposal

The Waste Electrical and Electronic Equipment (WEEE) Directive aims to minimise the impact of electrical and electronic goods on the environment, by increasing re-use and recycling and by reducing the amount of WEEE going to landfill. The symbol on this product or its packaging signifies that this product must be disposed separately from ordinary household wastes at its end of life. Be aware that this is your responsibility to dispose of electronic equipment at recycling centers in order to conserve natural resources. Each country should have its collection centers for electrical and electronic equipment recycling. For information about your recycling drop off area, please contact your related electrical and electronic equipment waste management authority, your local city office, or your household waste disposal service.


Feedback and Help

Love it? Hate it? Let us know with a customer review. AmazonBasics is committed to delivering customer-driven products that live up to your high standards. We encourage you to write a review sharing your experiences with the product.

US: [amazon.com/review/review-your-purchases#](https://www.amazon.com/review/review-your-purchases#) UK: [amazon.co.uk/review/review-your-purchases#](https://www.amazon.co.uk/review/review-your-purchases#)

US: [amazon.com/gp/help/customer/contact-us](https://www.amazon.com/gp/help/customer/contact-us) UK: [amazon.co.uk/gp/help/customer/contact-us](https://www.amazon.co.uk/gp/help/customer/contact-us)

Documents / Resources

	amazon basics B00BCEJ0E0 Wireless Remote Control for Canon Digital SLR Camera [pdf] Instruction Manual B00BCEJ0E0 Wireless Remote Control for Canon Digital SLR Camera, B00BCEJ0E0, Wireless Remote Control for Canon Digital SLR Camera
---	---