



amazon basics B005EJH6Z4 Wireless Mouse User Manual

[Home](#) » [amazon basics](#) » amazon basics B005EJH6Z4 Wireless Mouse User Manual 

Contents

- 1 [amazon basics B005EJH6Z4 Wireless Mouse](#)
- 2 [Important Safeguards](#)
- 3 [Battery Warnings](#)
- 4 [Product Description](#)
- 5 [Before First Use](#)
- 6 [Installing batteries/Pairing](#)
- 7 [Operation](#)
- 8 [Cleaning and Maintenance](#)
 - 8.1 [Cleaning](#)
- 9 [FCC Compliance Statement](#)
 - 9.1 [FCC Interference Statement](#)
- 10 [Canada IC Notice](#)
- 11 [Simplified EU Declaration of Conformity](#)
- 12 [Disposal](#)
- 13 [Battery Disposal](#)
- 14 [Specifications](#)
- 15 [Feedback and Help](#)
- 16 [Documents / Resources](#)
- 17 [Related Posts](#)



amazon basics B005EJH6Z4 Wireless Mouse



Important Safeguards

Read these instructions carefully and retain them for future use. If this product is passed to a third party, then these instructions must be included.

CAUTION Avoid looking directly into the sensor.

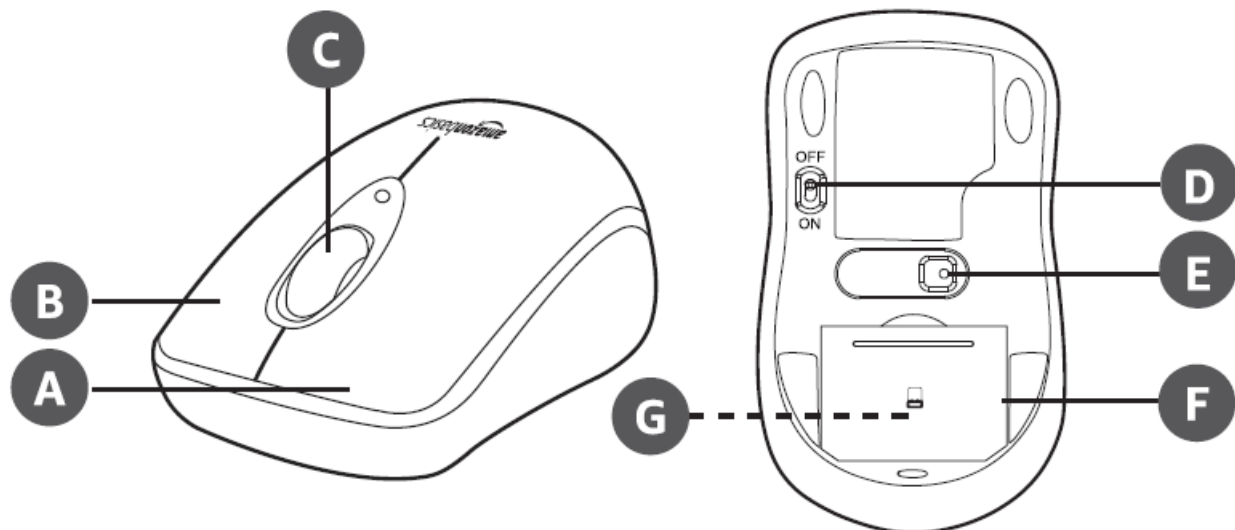
Battery Warnings

NOTICE The batteries are not included.

- Always insert batteries correctly with regards to polarity (+and-) marked on the battery and the product.
- Exhausted batteries should be immediately removed from product and properly disposed.

Product Description

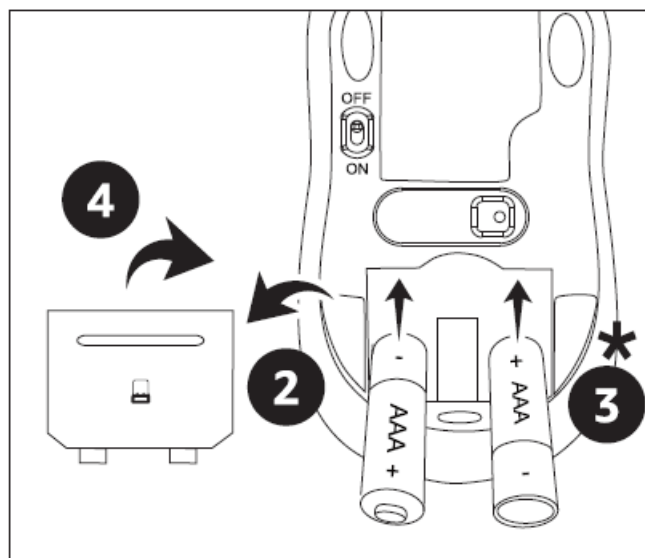
- Left button
- Right button
- Scroll wheel
- ON/OFF switch
- Sensor
- Battery cover
- Nano receiver



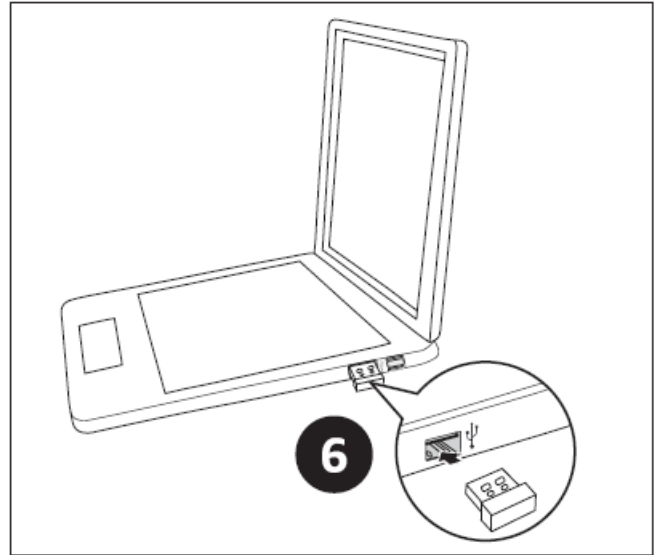
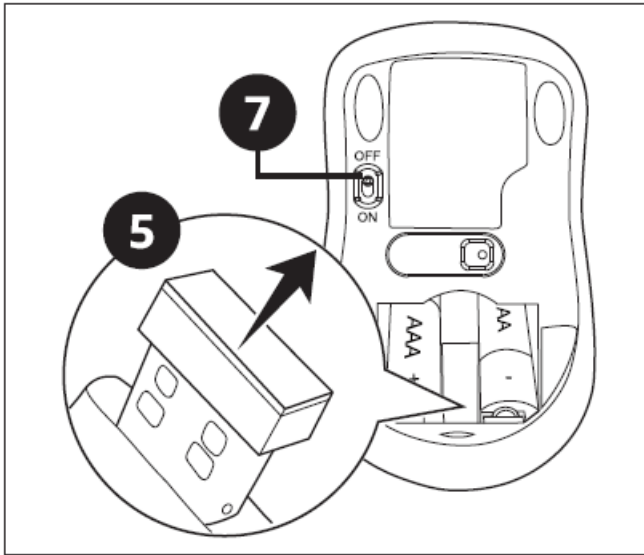
Before First Use

- Risk of suffocation!
- Keep any packaging materials away from children
- these materials are a potential source of danger, e.g. suffocation.
- Remove all the packing materials.
- Check the product for transport damages.

Installing batteries/Pairing



- Observe correct polarity(+ and-).



NOTICE The nano receiver automatically pairs with the product. If the connection fails or is interrupted, switch the product off and reconnect the nano receiver.

Operation

- Left button (A): Left click function according to your computer system settings.
- Right button (B): Right click function according to your computer system settings.
- Scroll wheel (C): Rotate the scroll wheel to scroll up or down on the computer screen. Click function according to your computer system settings.
- ON/OFF switch (D): Use the ON/OFF switch to switch the mouse on and off.

NOTICE The product does not work on glass surfaces.

Cleaning and Maintenance

NOTICE During cleaning do not immerse the product in water or other liquids. Never hold the product under running water.

Cleaning

- To clean the product, wipe with a soft, slightly moist cloth.
- Never use corrosive detergents, wire brushes, abrasive scourers, metal or sharp utensils to clean the product.
- Store the product in its original packaging in a dry area. Keep away from children and pets.

FCC Compliance Statement

1. This device complies with Part 1 S of the FCC rules. Operation is subject to the following two conditions:
 1. This device may not cause harmful interference, and
 2. This device must accept any interference received, including interference that may cause undesired operation.
2. Changes or modifications not expressly approved by the party responsible for compliance could void the user's authority to operate the equipment.

FCC Interference Statement

This equipment has been tested and found to comply with the limits for a Class B digital device, pursuant to part 15 of the FCC Rules. These limits are designed to provide reasonable protection against harmful interference in a residential installation. This equipment — generates, uses and can radiate radio frequency energy and, if not installed and used in accordance with the instructions, may cause harmful interference to radio communications. However, there is no guarantee that interference will not occur in a particular installation. If this equipment does cause harmful interference to radio or television reception, which can be determined by turning the equipment off and on, the user is encouraged to try to correct the interference by one or more of the following measures:

- Reorient or relocate the receiving antenna.
- Increase the separation between the equipment and receiver.
- Connect the equipment into an outlet on a circuit different from that to which the receiver is connected.
- Consult the dealer or an experienced radio/ TV technician for help.

Canada IC Notice

- This device contains license-exempt transmitter(s)/ receiver(s) that comply with Innovation, Science and Economic Development Canada's license-exempt RSS(s). Operation is subject to the following two conditions:
 1. This device may not cause interference, and
 2. This device must accept any interference, including interference that may cause undesired operation of the device.
- This equipment complies with Industry Canada radiation exposure limits set forth for an uncontrolled environment.
- This Class B digital apparatus complies with Canadian CAN ICES-3(B) / NMB-3(B) standard.

Simplified EU Declaration of Conformity

- Hereby, Amazon EU Sari declares that the radio equipment type B005EJH6Z4, B07TCQVDQ4, B07TCQVDQ7, B01MYU6XSB, B01N27QVP7, B01N9C2PD3, B01MZZR0PV. B01 NADN0Q1 is in compliance with Directive 2014/53/EU.
- The full text of the EU declaration of conformity is available at the following internet address:
https://www.amazon.co.uk/amazon_private_brand_EU_compliance

Disposal

The Waste Electrical and Electronic Equipment (WEEE) Directive aims to minimize the impact of electrical and electronic goods on the environment, by increasing – re-use and recycling and by reducing the amount of WEEE going to landfill. The symbol on this product or its packaging signifies that this product must be disposed separately from ordinary household wastes at its end of life. Be aware that this is your responsibility to dispose of electronic equipment at recycling centers in order to conserve natural resources. Each country should have its collection centers for electrical and electronic equipment recycling. For information about your recycling drop off area, please contact your related electrical and electronic equipment waste management authority, your local city office, or your household waste disposal service.

Battery Disposal

Do not dispose of used batteries with your household waste. Take them to an appropriate disposal/collection site.

Specifications

- Power supply 3 V (2 x AAA/LR03 battery)
- Net weight approx. 0.14 lbs (62.5 g)
- Dimensions (W x H x D) approx. 4 x 2.3 x 1.6"
- OS compatibility (10.1 x5.9x 4cm)
- Transmission power Windows 7/8/8.1/10 4dBm
- Frequency band 2.405~2.474 GHz


Feedback and Help

Love it? Hate it? Let us know with a customer review.

Amazon Basics is committed to delivering customer-driven products that live up to your high standards. We encourage you to write a review sharing your experiences with the product.

- US: amazon.com/review/review-your-purchases
- UK: amazon.co.uk/review/review-your-purchases
- US: amazon.com/gp/help/customer/contact-us
- UK: amazon.co.uk/gp/help/customer/contact-us

Documents / Resources

<p>amazon basics</p>  <p>Wireless Mouse Nano size PE Power Button Roller Wheel Click Buttons USB Receiver Cable Length: ワイヤレスマウス <small>B005EJH6Z4, B07TCQVDQ4, B07TQCDDYK, B07TMGDMGT, B07NTXTPVY, B07MNCJPGL, B07WZDMPPL, B07NMGDMGT</small></p>	<p>amazon basics B005EJH6Z4 Wireless Mouse [pdf] User Manual B005EJH6Z4, B07TCQVDQ4, Wireless Mouse, B005EJH6Z4 Wireless Mouse, Mouse</p>
---	--