



Amazon Basics M8126BL01 Wireless Computer Mouse User Manual

[Home](#) » [Support](#) » Amazon Basics M8126BL01 Wireless Computer Mouse User Manual 



Contents

- [1 Amazon Basics M8126BL01 Wireless Computer Mouse](#)
- [2 Important Safeguards](#)
- [3 Product Description](#)
- [4 Before First Use](#)
- [5 Installing batteries/Pairing](#)
- [6 Operation](#)
- [7 Cleaning and Maintenance](#)
- [8 Cleaning](#)
- [9 Storage](#)
- [10 FCC Compliance Statement](#)
- [11 Specifications](#)
- [12 Frequently Asked Questions](#)
 - [12.1 what kind of batteries does it use?](#)

Amazon Basics M8126BL01 Wireless Computer Mouse



Important Safeguards

Read these instructions carefully and retain them for future use. If this product is passed to a third party, then these instructions must be included.

CAUTION

Avoid looking directly into the sensor.

Symbols Explanation

This symbol stands for “Conformité Européenne”, which declares “Conformity with EU directives, regulations and applicable standards”. With the CE-marking, the manufacturer confirms that this product complies with applicable European directives and regulations.

This symbol stands for “United Kingdom Conformity Assessed”. With the UKCA marking, the manufacturer confirms that this product complies with applicable regulations and standards within Great Britain.

Battery Warnings

DANGER Risk of explosion!

Risk of explosion if the battery is replaced by an incorrect type.

NOTICE

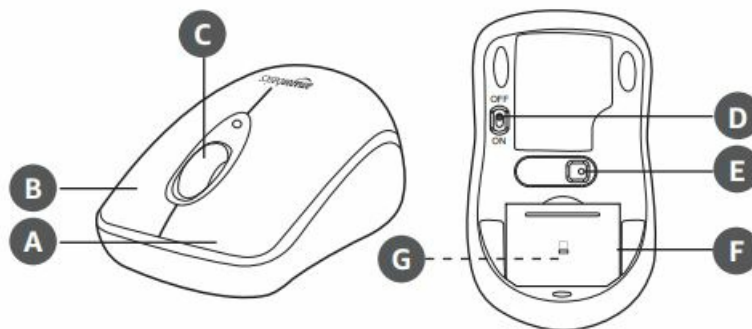
2 AAA batteries are required (included).

- When used correctly, primary batteries provide a safe and dependable source of portable power. However, misuse or abuse may result in leakage, fire, or rupture.
- Always take care to install your batteries correctly observing the “+” and “-” marks on the battery and the product. Batteries that are incorrectly placed into some equipment may be short-circuited, or charged. This can result in a rapid temperature rise causing venting, leakage, rupture, and personal injury.
- Always replace the whole set of batteries at one time, taking care not to mix old and new ones or batteries of different types. When batteries of different brands or types are used together, or new and old batteries are used together, some batteries may be over-discharged due to a difference in voltage or capacity. This can result in venting, leakage, and rupture and may cause personal injury.
- Remove discharged batteries from the product promptly to avoid possible damage from leakage. When

discharged batteries are kept in the product for a long time, electrolyte leakage may occur causing damage to the product and/or personal injury.

- Never dispose of batteries in a fire. When batteries are disposed of in a fire, the heat build-up may cause rupture and personal injury. Do not incinerate batteries except for approved disposal in a controlled incinerator.
- Never attempt to recharge primary batteries. Attempting to charge a non-rechargeable (primary) battery may cause internal gas and/or heat generation resulting in venting, leakage, rupture, and personal injury.
- Never short-circuit batteries as this may lead to high temperatures, leakage, or rupture. When the positive (+) and negative (–) terminals of a battery are in electrical contact with each other, the battery becomes short-circuited. This may result in venting, leakage, rupture, and personal injury.
- Never heat batteries in order to revive them. When a battery is exposed to heat, venting, leakage, and rupture may occur and cause personal injury.
- Remember to switch off products after use. A battery that has been partially or completely exhausted may be more prone to leak than one that is unused.
- Never attempt to disassemble, crush, puncture or open batteries. Such abuse may result in venting, leakage, and rupture, and cause personal injury.
- Keep batteries out of the reach of children, especially small batteries that could be easily ingested.
- Immediately seek medical attention if a cell or battery has been swallowed. Also, contact your local poison control center.

Product Description



- Left button
- Right button
- Scroll wheel
- ON/OFF switch
- Sensor
- Battery cover
- Nano receiver

Before First Use

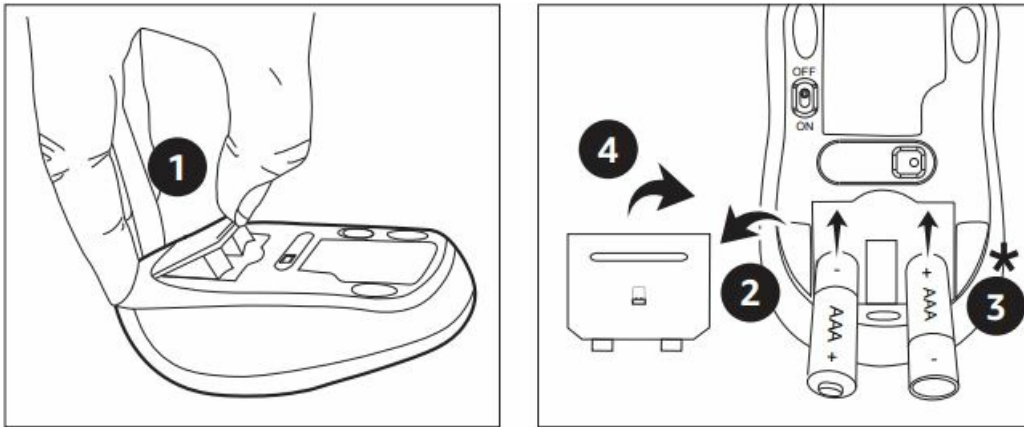
DANGER Risk of suffocation!

Keep any packaging materials away from children – these materials are a potential source of danger, e.g. suffocation.

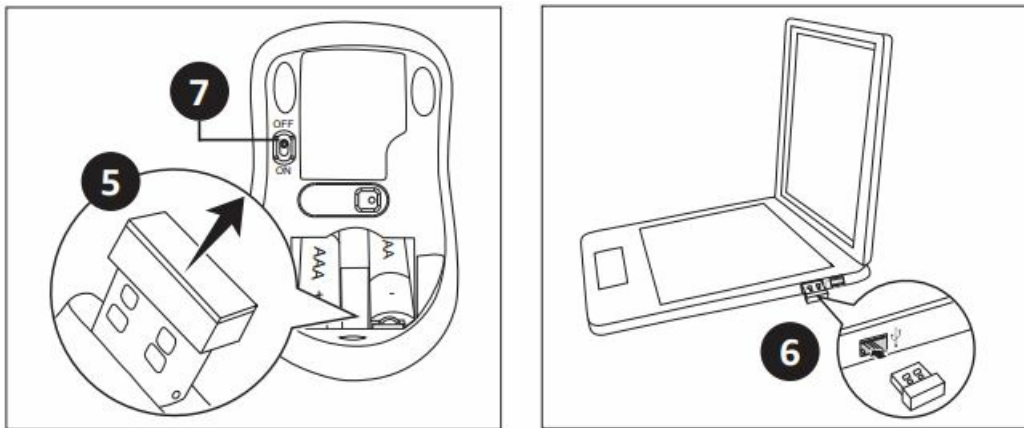
- Remove all the packing materials.

- Check the product for transport damages.

Installing batteries/Pairing



- Observe correct polarity (+ and -).



NOTICE

The nano receiver automatically pairs with the product. If the connection fails or is interrupted, switch the product off and reconnect the nano receiver.

Operation

- Left button (A): Left click function according to your computer system settings.
- Right button (B): Right-click function according to your computer system settings.
- Scroll wheel (C): Rotate the scroll wheel to scroll up or down on the computer screen. Click the function according to your computer system settings.
- ON/OFF switch (D): Use the ON/OFF switch to switch the mouse on and off.

NOTICE

The product does not work on glass surfaces.

Cleaning and Maintenance

NOTICE

During cleaning do not immerse the product in water or other liquids. Never hold the product under running water.

Cleaning

- To clean the product, wipe with a soft, slightly moist cloth.
- Never use corrosive detergents, wire brushes, abrasive scourers, or metal or sharp utensils to clean the product.

Storage

Store the product in its original packaging in a dry area. Keep away from children and pets.

FCC Compliance Statement

1. This device complies with Part 15 of the FCC rules. Operation is subject to the following two conditions:
 - (1) this device may not cause harmful interference, and
 - (2) this device must accept any interference received, including interference that may cause undesired operation.
2. Changes or modifications not expressly approved by the party responsible for compliance could void the user's authority to operate the equipment.

FCC Interference Statement

This equipment has been tested and found to comply with the limits for a Class B digital device, pursuant to part 15 of the FCC Rules. These limits are designed to provide reasonable protection against harmful interference in a residential installation.

This equipment generates, uses, and can radiate radio frequency energy and, if not installed and used in accordance with the instructions, may cause harmful interference to radio communications. However, there is no guarantee that interference will not occur in a particular installation. If this equipment does cause harmful interference to radio or television reception, which can be determined by turning the equipment off and on, the user is encouraged to try to correct the interference by one or more of the following measures:

- Reorient or relocate the receiving antenna.
- Increase the separation between the equipment and the receiver.
- Connect the equipment to an outlet on a circuit different from that to which the receiver is connected.
- Consult the dealer or an experienced radio / TV technician for help.

Canada IC Notice

This device contains license-exempt transmitter(s)/receiver(s) that comply with Innovation, Science, and Economic Development Canada's license-exempt RSS(s).

Operation is subject to the following two conditions:

1. this device may not cause interference, and
 2. this device must accept any interference, including interference that may cause undesired operation of the device.
- This equipment complies with Industry Canada radiation exposure limits set forth for an uncontrolled environment.
 - This Class B digital apparatus complies with the Canadian

CAN ICES-003(B) / NMB-003(B) standard.

Simplified EU Declaration of Conformity

- Hereby, Amazon EU Sarl declares that the radio equipment type B005EJH6Z4, B07TCQVDQ4, B07TCQVDQ7, B01MYU6XSB, B01N27QVP7, B01N9C2PD3, B01MZZR0PV, B01NADN0Q1 is in compliance with Directive 2014/53/EU.
- The full text of the EU declaration of Conformity is available at the following internet address:
https://www.amazon.co.uk/amazon_private_brand_EU_compliance

Disposal (for Europe only)

The Waste Electrical and Electronic Equipment (WEEE) laws aim to minimize the impact of electrical and electronic goods on the environment and human health, by increasing re-use and recycling and by reducing the amount of WEEE going to landfill. The symbol on this product or its packaging signifies that this product must be disposed of separately from ordinary household wastes at its end of life. Be aware that this is your responsibility to dispose of electronic equipment at recycling centres in order to conserve natural resources. Each country should have its collection centers for electrical and electronic equipment recycling.

For information about your recycling drop-off area, please contact your related electrical and electronic equipment waste management authority, your local city office, or your household waste disposal service.

Battery Disposal

Do not dispose of used batteries with your household waste. Take them to an appropriate disposal/collection site.

Specifications

- Power supply: 3 V (2 x AAA/LR03 battery)
- OS compatibility: Windows 7/8/8.1/10
- Transmission power: 4 dBm
- Frequency band: 2.405~2.474 GHz

Feedback and Help

Love it? Hate it? Let us know with a customer review.

Amazon Basics is committed to delivering customer-driven products that live up to your high standards. We encourage you to write a review sharing your experiences with the product.

US: amazon.com/review/review-your-purchases#

UK: amazon.co.uk/review/review-your-purchases#

US: amazon.com/gp/help/customer/contact-us

UK: amazon.co.uk/gp/help/customer/contact-us

Frequently Asked Questions

what kind of batteries does it use?

The one I just purchase comes with 2 AAA batteries, not 3. Was working great when I first received it, but now it doesn't work at all.

Will it work with Mac book?

It is not Bluetooth but requires a USB receiver. It works with any device with Windows or Mac OS 10; and which has a USB port. So the specs on the MacBook Air need to be checked carefully before buying - some have USB ports, some don't. It's that simple.

what is the signal distance? Can I use it 12 ft from the computer

YES, I just tested it for you, yes, but I can't read the screen at that distance, and hard to see the cursor,, I went about 14 - 15 ft as well and it was still active.

Can the scroller be pushed down and used as a button?

When you push it down you get auto-scroll mode, the screen scrolls wherever you point. Click again to turn it off. I believe you could program it for a different function, but I'm not certain.

Does the scroll wheel also move side-to-side for left and right scrolling?

I'm not sure if this is just a newer model, but the one I ordered a few days ago does left/right scrolling. You can click the scroll button, and when you have activated the mode by clicking you can scroll side-to-side (diagonal, too - it's multi-directional).

How long does the battery last?

I installed the batteries included with my mouse on April 08, 2014, and as of today I have not needed to replace the battery yet, and the mouse is functioning perfectly. I turn it off when not in use, but it is on about 10-12 hours per day.

Is there a way to swap out the buttons so that I can use this with my left hand?

If you are using Windows I think there's a setting in the control panel to switch from left to right. I'm currently on Apple Macbook and there's a similar way to switch as well. In Windows, you can find the control in the same area as Pointers, Cursors,

What is the Amazon Basics M8126BL01 Wireless Computer Mouse?

The Amazon Basics M8126BL01 is a wireless computer mouse offered by Amazon under its Amazon Basics product line. It is designed to provide a simple and reliable input device for use with computers.

How does the Amazon Basics M8126BL01 Wireless Computer Mouse connect to a computer?

The mouse connects to a computer using a USB receiver. The receiver needs to be plugged into a USB port on the computer, and the mouse communicates wirelessly with the receiver.

Is the Amazon Basics M8126BL01 Wireless Computer Mouse compatible with all operating systems?

Yes, the Amazon Basics M8126BL01 is compatible with most major operating systems, including Windows,

macOS, and Linux. It should work with any computer that supports USB input devices.

How many buttons does the Amazon Basics M8126BL01 Wireless Computer Mouse have?

The mouse features a standard design with three buttons: left-click, right-click, and a clickable scroll wheel.

Does the Amazon Basics M8126BL01 Wireless Computer Mouse have a DPI adjustment feature?

No, the M8126BL01 does not have a DPI adjustment feature. It operates at a fixed DPI (dots per inch) sensitivity level.

What is the battery life of the Amazon Basics M8126BL01 Wireless Computer Mouse?

The battery life of the mouse can vary depending on usage, but it generally lasts several months with regular use. It requires one AA battery for power.

Is the Amazon Basics M8126BL01 Wireless Computer Mouse ambidextrous?

Yes, the mouse is designed to be ambidextrous, meaning it can be comfortably used by both right-handed and left-handed individuals.

Does the Amazon Basics M8126BL01 Wireless Computer Mouse have a wireless range limitation?

The mouse has a wireless range of up to approximately 30 feet (10 meters), allowing you to use it comfortably within that range from the connected computer.

Download this PDF Link: [Amazon Basics M8126BL01 Wireless Computer Mouse User Manual](#)