




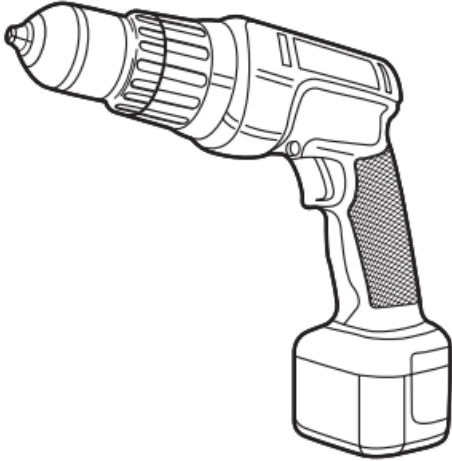



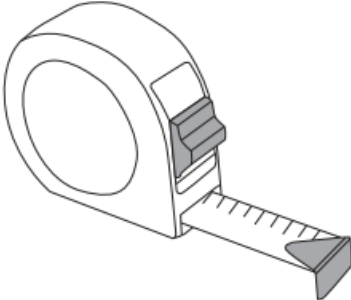

amazon basics AB1500-FB-10 Euro Bar Cabinet Handle User Manual

[Home](#) » [amazon basics](#) » amazon basics AB1500-FB-10 Euro Bar Cabinet Handle User Manual 

amazon basics AB1500-FB-10 Euro Bar Cabinet Handle User Manual



Caution This product contains small items that could be a choking hazard if swallowed. Keep these items away from young children.

	
 3/16"(4.8mm)	
	
	

- Make Sure these instructions are read and completely understood before attempting installation. If you are unsure of any part of this installation, please contact a professional installer for assistance.

Contents

- [1 Product Specifications:](#)
- [2 Installing New Cabinet Knobs:](#)
- [3 Documents / Resources](#)
 - [3.1 References](#)
- [4 Related Posts](#)

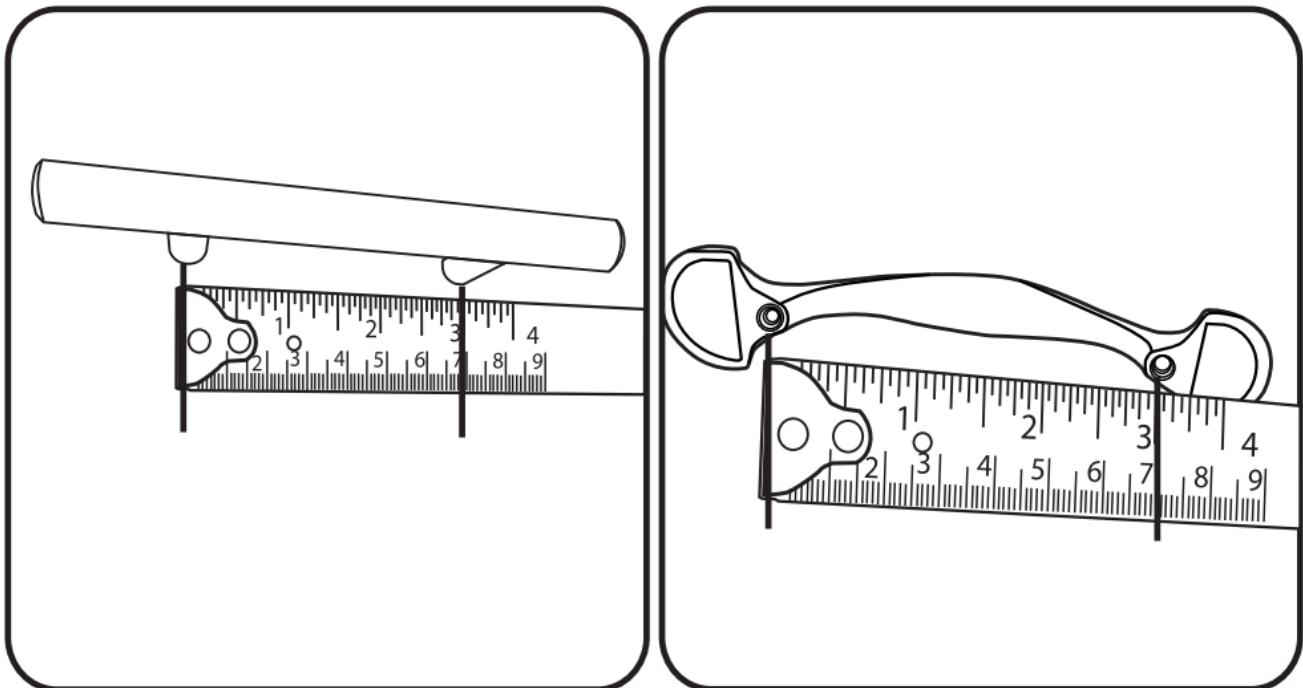
Product Specifications:

- Applicable to office file drawers, bedroom furniture and kitchen cabinets made from wood and plastic.
- Certified to the EN and US corrosion resistance standard.
- Made from cold rolled steel or zinc alloy.
- Max loading capacity 75 LBS.

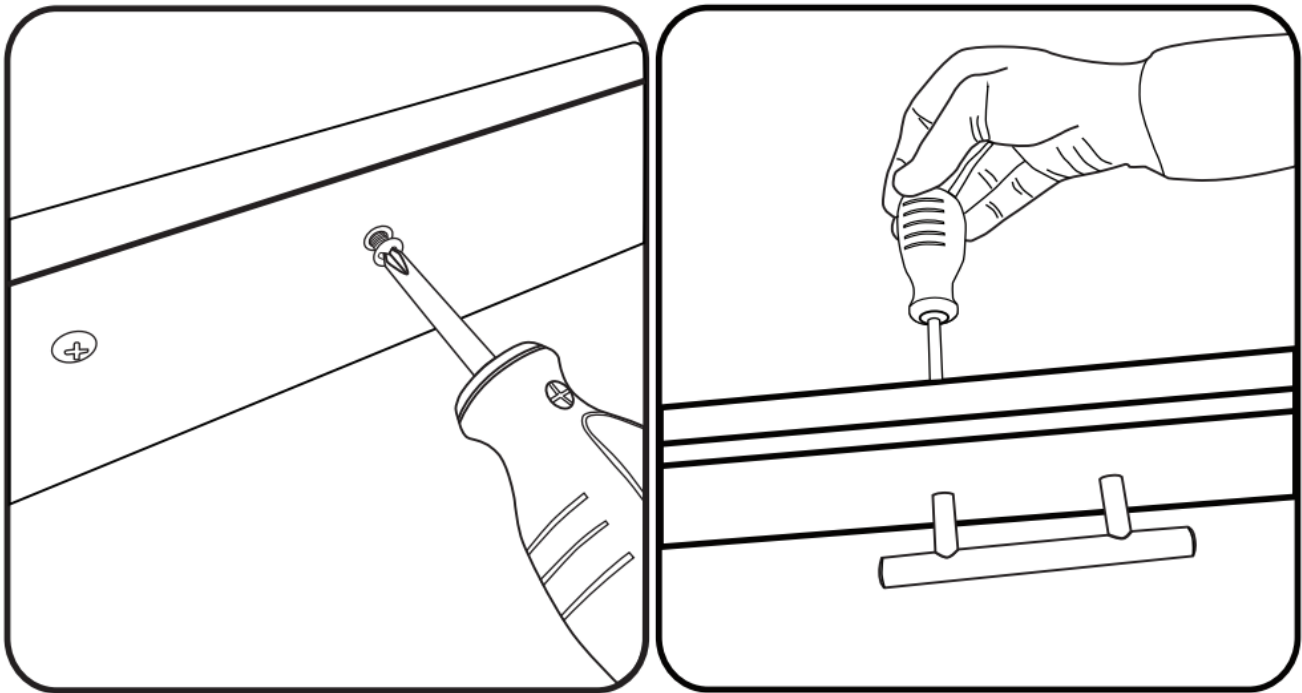
Replacing Your Drawer or Cabinet Door Handles:

Refer to our “Installing New Cabinet Handles” guide below if you are installing your handles onto new cabinets or drawers.

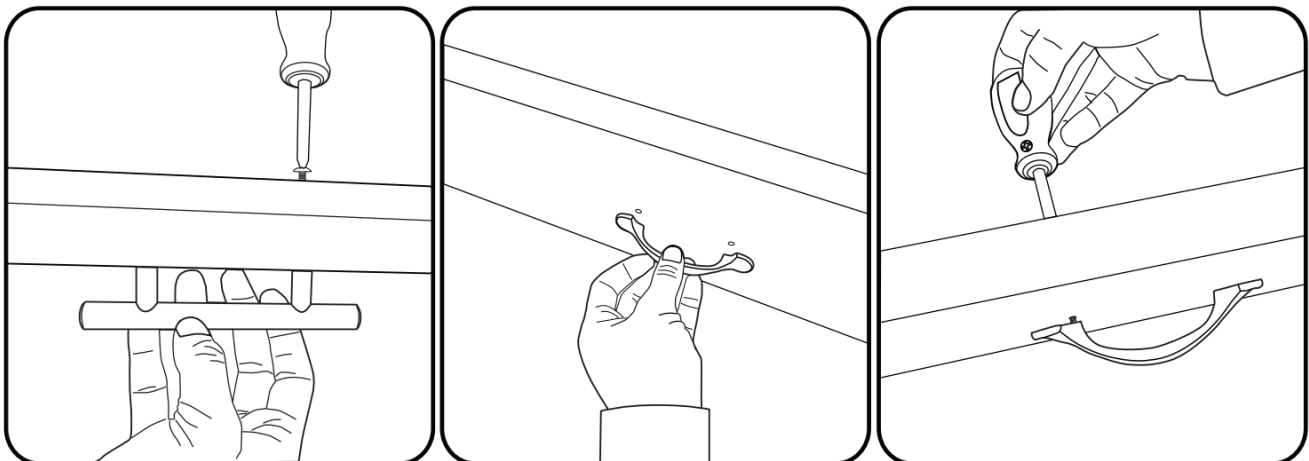
Step A: Measure the center to center hole spacing of your newly purchased Amazon Basics handle and ensure that they match your current drawer handles.

A

Step B: Open your drawer or cabinet door, remove both screws from the old handle.

B

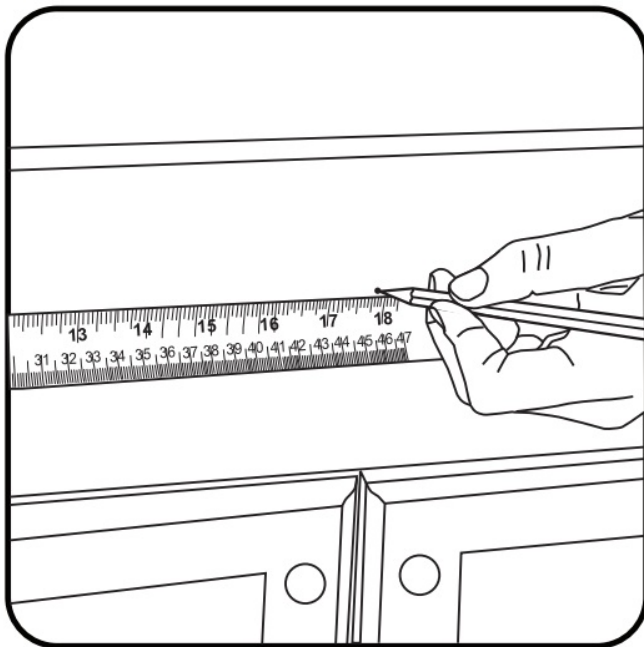
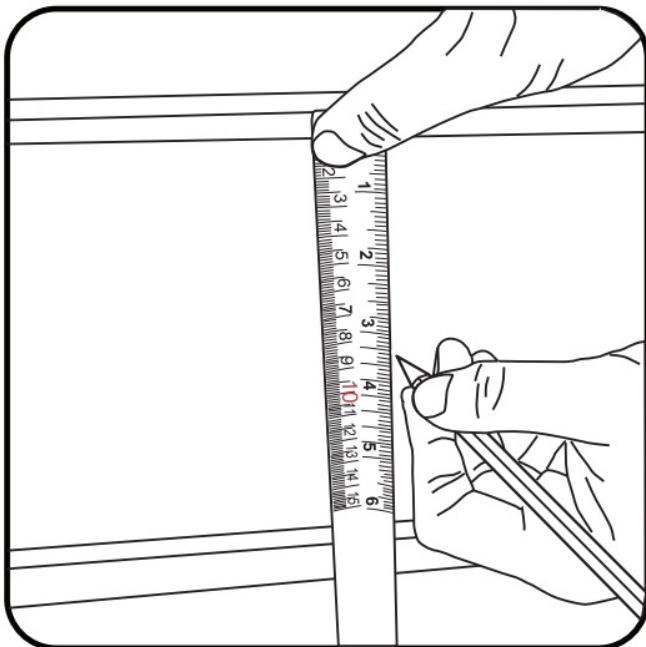
Step C: Align your new handle with the drawer holes. While supporting the handle with one hand, install the handle using the replacement screws included in your pack. Tighten until secured.

C

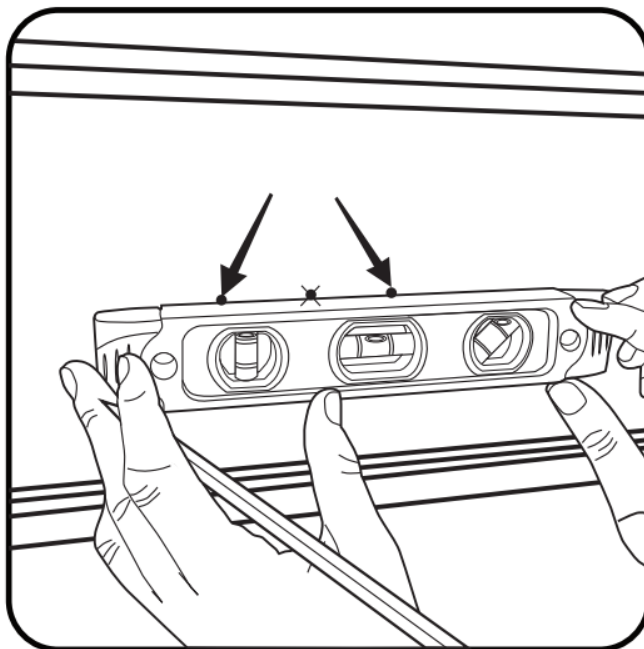
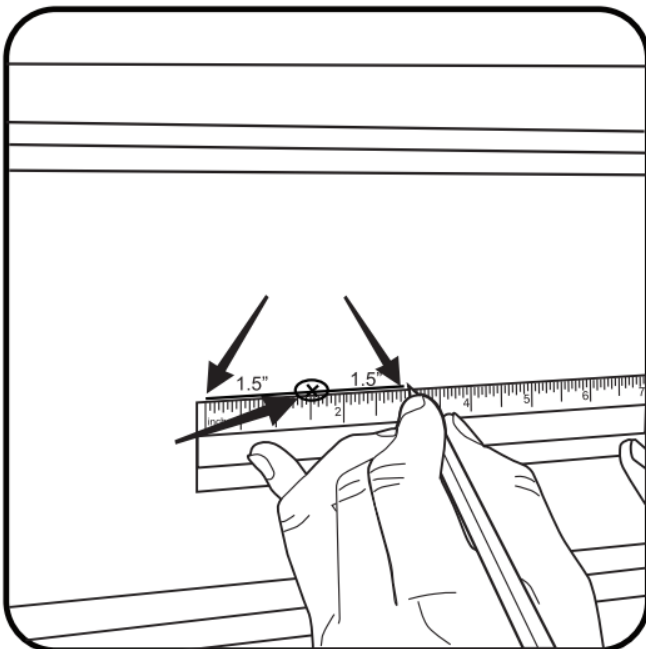
NOTICE : This pack includes two screw sizes per handle. Make sure you select the size which best suits your handles and drawers.

Installing New Cabinet Knobs:

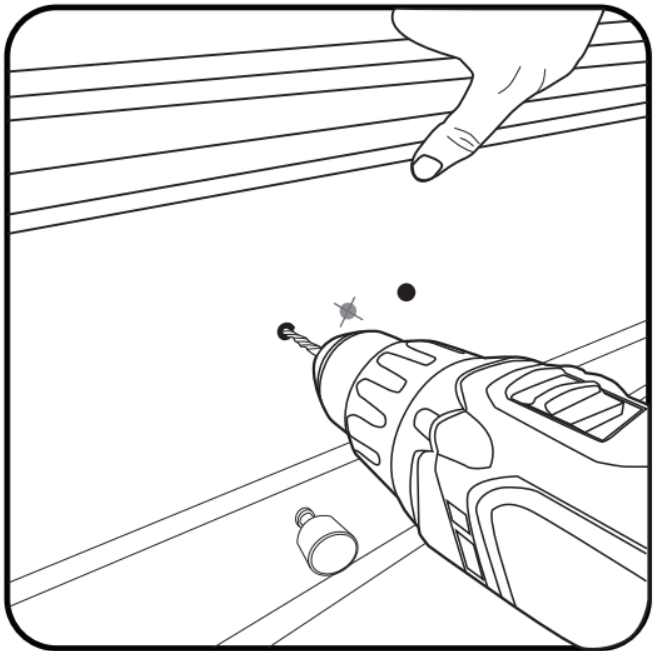
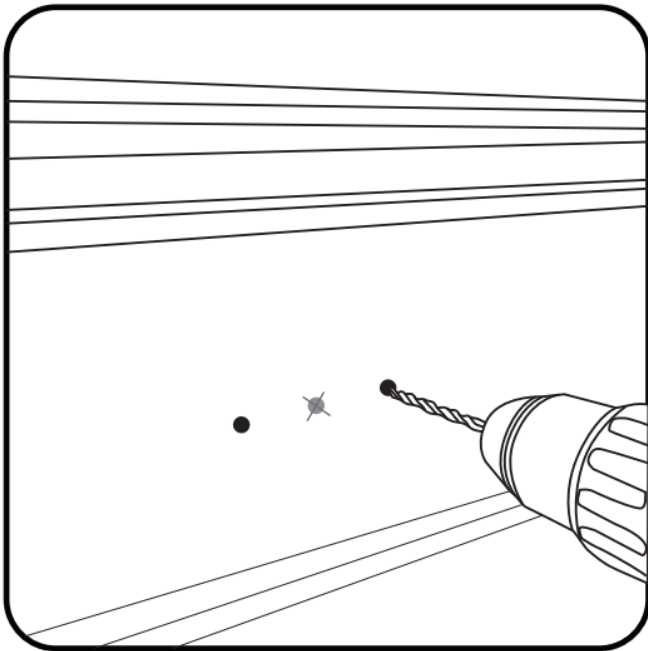
Step 1: Determine where you would like to mount your handle by placing it on the cabinet door or drawer. Use a ruler or tape measure to ensure the handle is evenly spaced on the cabinet or drawer. Lightly mark your center location with a pencil.



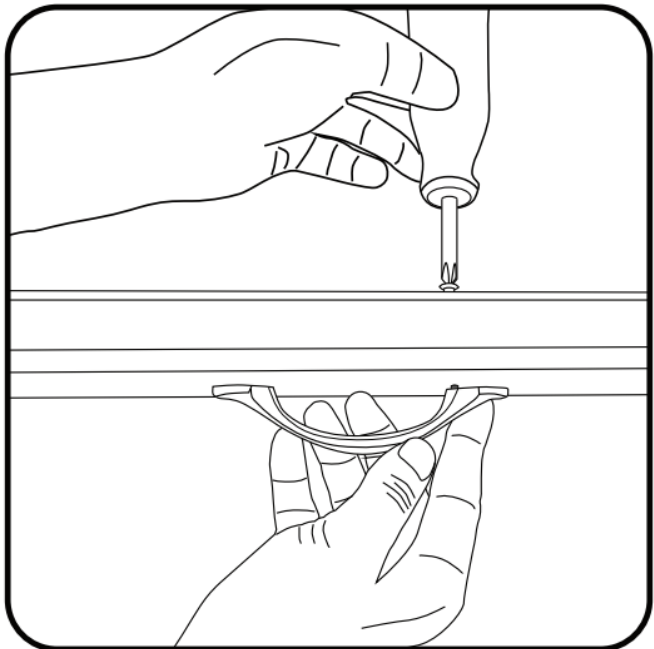
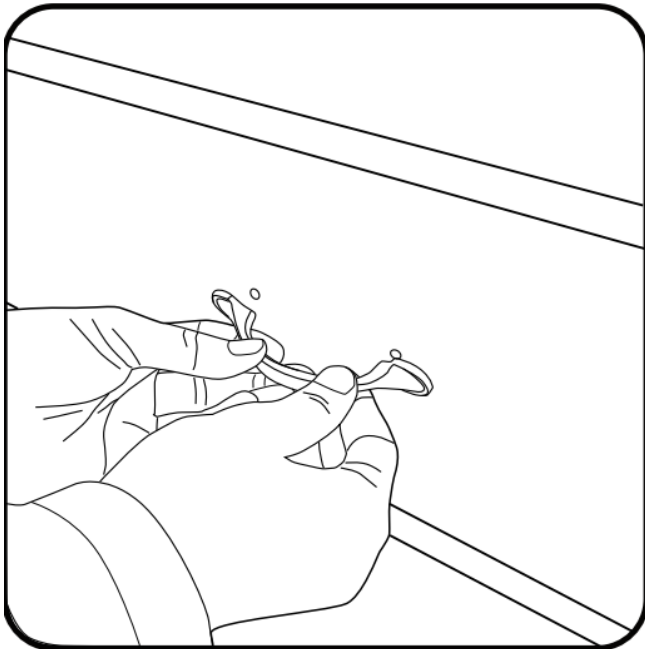
Step 2: Measure two opposing marks that extend half the distance of your handle hole centers. For example, if your handle has a 3-inch hole center, mark two points that are 1.5 inches in either direction. Use a level to ensure that your marked locations are straight.



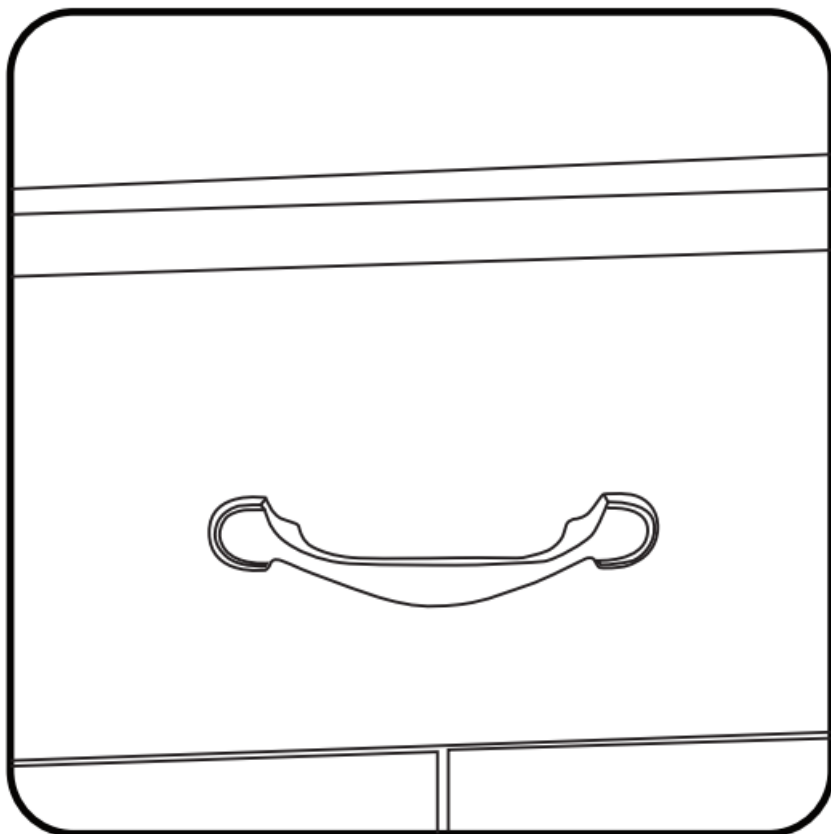
Step 3: Using a drill and a 3/16" (4.8mm) drill bit, drill a hole into your cabinet door or drawer at both the left and right marks. Do not drill into the center mark. Once both holes are made, gently erase the middle mark you made in Step 1.



Step 4: Align your new handle with the drawer holes. While supporting the handle with one hand, install the handle using the replacement screws included in your pack. Tighten until secured.



Step 5: Repeat steps 1-4 for all remaining drawers or cabinet doors.



NOTICE :

This pack includes two screw sizes per handle. Make sure you select the size which best suits your handles and drawers.



Feedback and Help

Love it? Hate it? Let us know with a customer review.

 **US:** [amazon.com/review/review-your-purchases#](https://www.amazon.com/review/review-your-purchases#)

UK: [amazon.co.uk/review/review-your-purchases#](https://www.amazon.co.uk/review/review-your-purchases#)

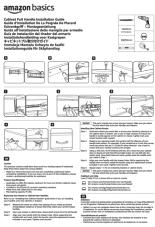
 **US:** [amazon.com/gp/help/customer/contact-us](https://www.amazon.com/gp/help/customer/contact-us)

UK: [amazon.co.uk/gp/help/customer/contact-us](https://www.amazon.co.uk/gp/help/customer/contact-us)

MADE IN CHINA FABRIQUÉ EN CHINE HERGESTELLT IN CHINA PRODOTTO IN CINA HECHO EN CHINA
GEMAAKT IN CHINA WYPRODUKOWANO W CHINACH TILLVERKAD I KINA

V3-12/22

amazon basics



[amazon basics AB1500-FB-10 Euro Bar Cabinet Handle](#) [pdf] User Manual
AB1500-FB-10 Euro Bar Cabinet Handle, AB1500-FB-10, Euro Bar Cabinet Handle, Bar Cabin
et Handle, Cabinet Handle, Handle

References

- [User Manual](#)