



amazon basics 657FS Alexa Voice Remote Instruction Manual

[Home](#) » [amazon basics](#) » amazon basics 657FS Alexa Voice Remote Instruction Manual 

Contents

- [1 amazon basics 657FS Alexa Voice Remote](#)
- [2 POWER UP YOUR ALEXA VOICE REMOTE PRO](#)
- [3 Documents / Resources](#)
 - [3.1 References](#)
- [4 Related Posts](#)

amazonbasics

amazon basics 657FS Alexa Voice Remote



MEET YOUR ALEXA VOICE REMOTE PRO



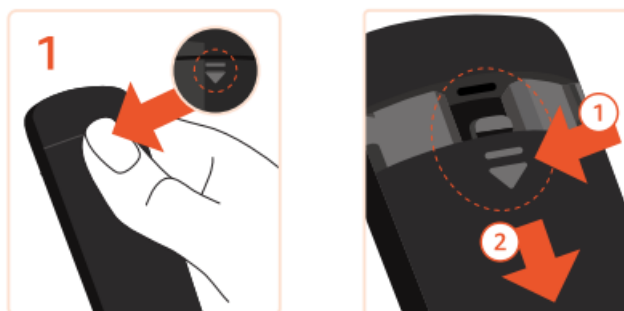
POWER UP YOUR ALEXA VOICE REMOTE PRO

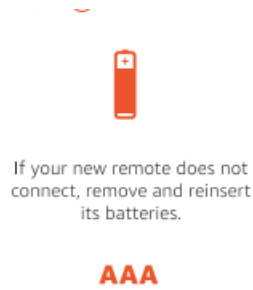
• INSERT YOUR BATTERIES

- Press and hold your thumb on the arrow to release the latch.
- With one thumb pressing on the arrow, use your other thumb to slide open the cover. Insert included batteries.

• TIPS AND TROUBLESHOOTING

- Make sure you G) press the arrow firmly to release the latch as you slide the cover off.
- Always replace dead batteries with new 1.5V alkaline or 1.2 NiMH rechargeable AAA batteries.








SET UP YOUR ALEXA VOICE REMOTE PRO


IF YOU HAVE THE REMOTE THAT CAME WITH YOUR FIRE TV DEVICE, YOU'LL NEED BOTH REMOTES FOR THE SETUP

NEW REMOTE

Insert the batteries and press the Home  button once.

ORIGINAL REMOTE

1. Press the Home  button, navigate to  on the menu bar, then select Controllers & Bluetooth Devices > Amazon Fire TV Remotes > Add New Remote.
2. Check if the new remote shows up in the list.

Tip: If the new remote does not show up in the list, long press Home  button for 10 seconds on the new remote.

3. Select the new remote from the list. You'll see an on-screen message when it has been successfully paired.


YOU CAN NOW USE YOUR NEW ALEXA VOICE REMOTE PRO

IF THIS IS A REPLACEMENT REMOTE AND YOU DON'T HAVE THE REMOTE THAT CAME WITH YOUR FIRE TV DEVICE

RESTART YOUR DEVICE

Restart your Fire TV device by unplugging it and plugging it back in. Once the Fire TV Home screen appears, wait 60 seconds until "cannot detect your remote" is seen on the screen.

NEW REMOTE

Press the Home  button once on the new remote. The remote should successfully pair with the Fire TV device and you should see a blue light flicker on the remote.

Tip: If it does not pair, press and hold the Home  button until the remote starts to flash amber (it may take 10 seconds or more).

A notification will appear on your screen indicating that your remote is successfully paired.

YOU CAN NOW USE YOUR NEW ALEXA VOICE REMOTE PRO

HOW TO USE YOUR ALEXA VOICE REMOTE PRO



REMOTE FINDER

- To find your remote, just ask Alexa from any
- Amazon device with Alexa, Alexa Built-in device, the
- Alexa app or the Fire TV app:
- Alexa, find my remote.”
- Alexa, ring my remote.”
- You can also use the Remote Finder button within the Fire TV mobile app.

Note: The Remote Finder feature has a range of up to 30 ft (10 m) and requires the Fire TV device to be on.



ACTIVATE BACKLIT BUTTONS

Backlit buttons will automatically turn on when using your remote in low-light environments.



PROGRAMME CUSTOMISABLE BUTTONS


To program customizable buttons 1) or 2, press and hold it, and select a shortcut option from the side panel that pops up on the screen.

The list of shortcut options will be personalized to you. Examples include:


1. The app you are currently using or recently used, e.g.
“Alexa, open Prime Video.”
2. Alexa commands, e.g.
“Alexa, play music.”
3. Smart Home controls, e.g.
“Alexa, show me the front door camera.”

PAIR YOUR WIRELESS HEADPHONES

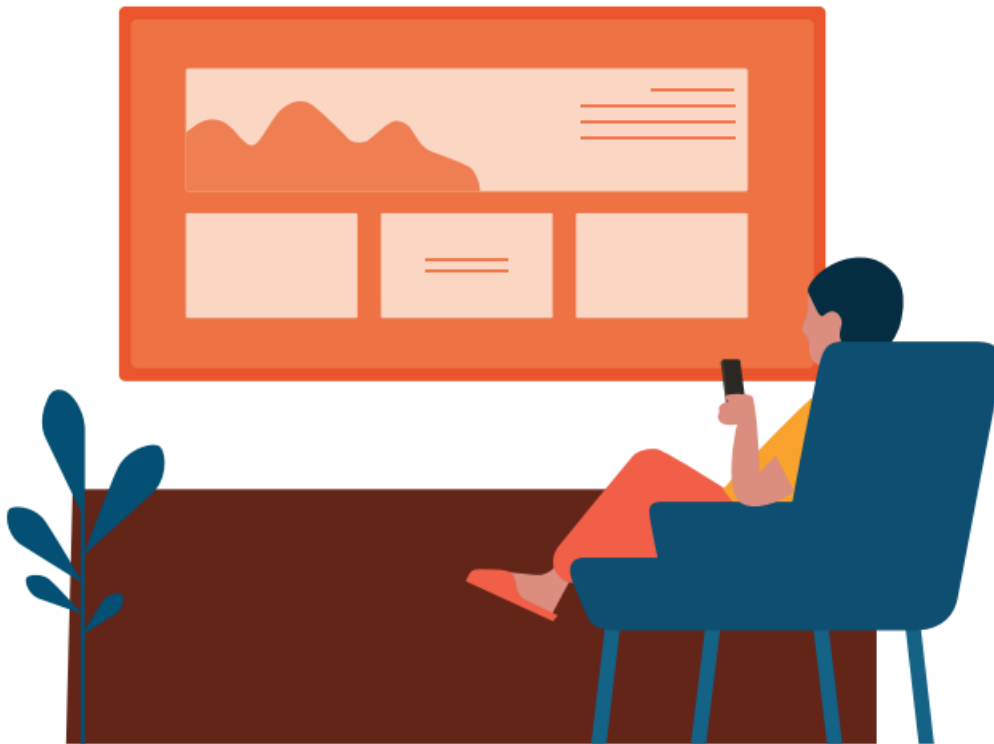


To easily pair or unpair your headphones or other Bluetooth audio devices with your Fire TV, get started by pressing the headphone button  and following the on-screen instructions.

DO MORE WITH ALEXA

Just press the voice  button on your remote and ask Alexa to find, launch and control content. Alexa can also play music, answer questions, read the news, check the weather, and set up alarms.

- Alexa, find action movies.))
- ({Alexa, rewind 30 seconds.))
- Alexa, dim the lights.))



Documents / Resources



[amazon basics 657FS Alexa Voice Remote](#) [pdf] Instruction Manual
657FS Alexa Voice Remote, 657FS, Alexa Voice Remote, Voice Remote, Remote

References

- [User Manual](#)