



amazon basics 230GL Wireless Keyboard and Mouse Combo with Backlit User Manual

[Home](#) » [amazon basics](#) » amazon basics 230GL Wireless Keyboard and Mouse Combo with Backlit User Manual 

amazon basics

2.4G Wireless Backlight
Keyboard Mouse Combo
User Manual

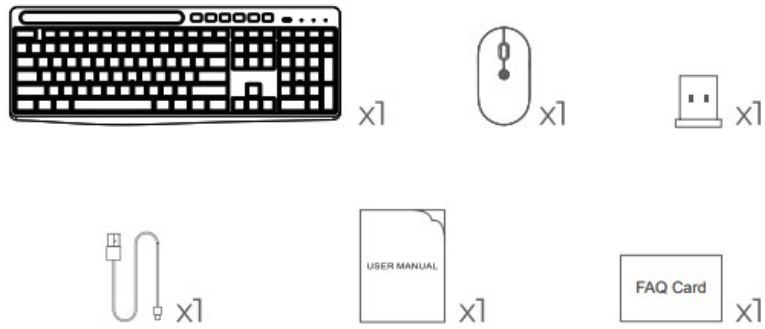
All Acebaff products come with a 12-months warranty policy, please do not hesitate to contact us if you have any questions. Our support team will try our best to provide you with a pleasant shopping experience.

Our email: abcsm001@126.com

Contents

- 1 [Packing List](#)
- 2 [2.4G Wireless Connection](#)
- 3 [Overview](#)
- 4 [BackLight Functions](#)
- 5 [Keys and function](#)
- 6 [Keys and Function](#)
- 7 [CORRECT DISPOSAL OF THIS PRODUCT](#)
- 8 [FCC STATEMENT](#)
- 9 [Documents / Resources](#)
 - 9.1 [References](#)
- 10 [Related Posts](#)

Packing List



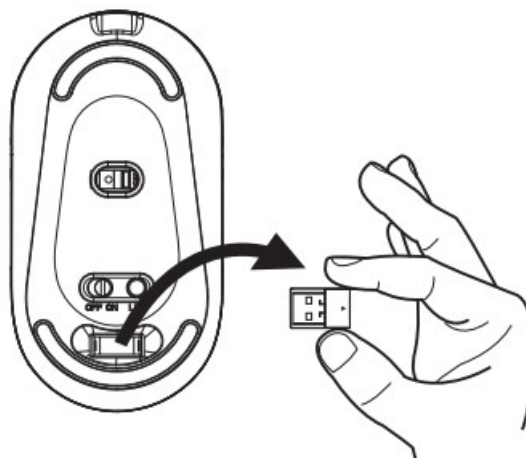
1. Keyboard x1
2. Mouse x1
3. USB Receiver x1 {in the mouse battery compartment}
4. USB C Charging Cable X1
5. User Manual x1
6. FAQ Card x1

2.4G Wireless Connection

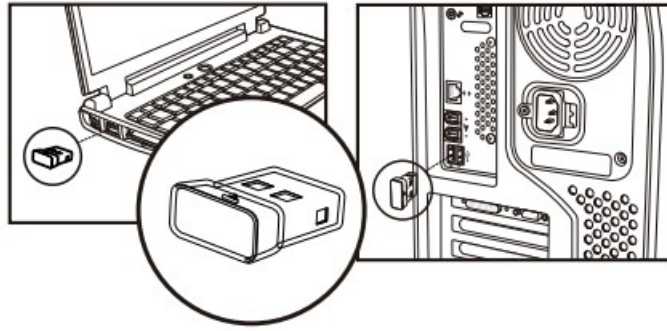
1. Turn on the power switch.



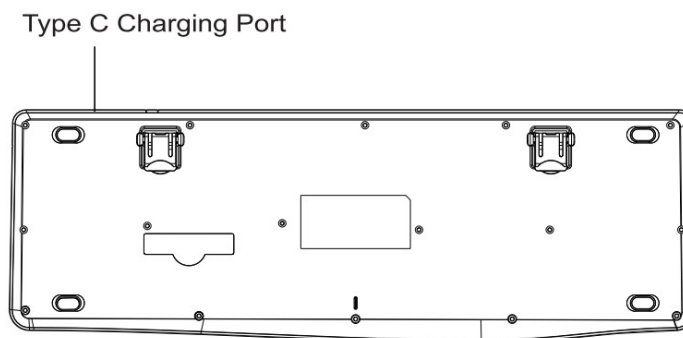
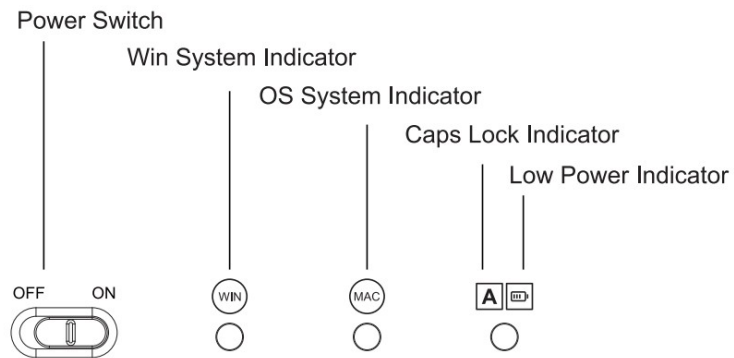
2. Take out the USB receiver.



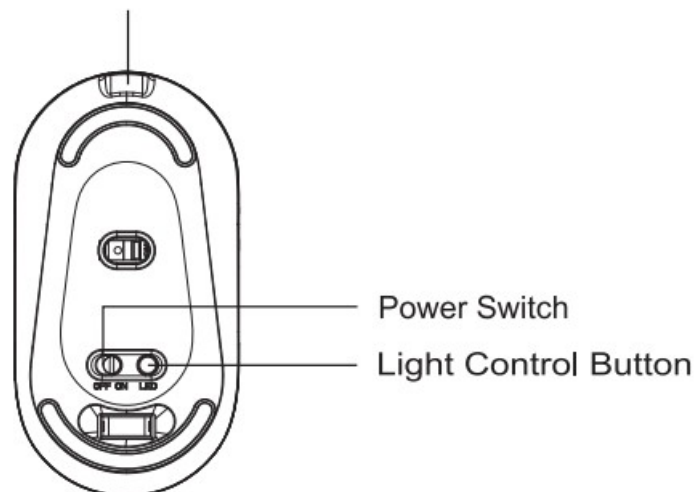
3. Insert the receiver into computer USB Port.



Overview



Type C Charging Port



BackLight Functions

Keyboard Backlight

1. The keyboard has 4 kinds of lighting effects:

Backlit off < Low(30% brightness)<Mid(60% brightness)<High (100% brightness)

2. Press FN+END keys to adjust the keyboard backlight effects.




Mouse Backlight

1. The mouse has 22 kinds of RGB lighting effects.
2. The backlight control button is at the bottom of the mouse:
 - 1)Short press the light button at the bottom to switch light effects circularly.
 - 2)Press and hold the light button for 3 seconds to turn off/on the light.

Keys and function

Key	Windows	Mac OS
	Mute	Mute
	Volume –	Volume –
	Volume +	Volume +
	Previous	Previous
	Play/Pause	Play/Pause
	Next track	Next track
	Brightness down	Brightness down
	Brightness up	Brightness up
	Switch App	Switch App
	Select All	Select All
	Copy	Copy
	Paste	Paste
	Save	Save
Fn + 	F1-F12 Lock/Unlock	Not for Mac os
	One Click, Switch to Win System	One Click, Switch to Win System
	One Click, Switch to OS System	One Click, Switch to OS System
	Search	Search
	Lock Screen	Lock Screen


Keys and Function

1. .Press  key to use the keyboard on Windows PC

The F1-F12 Lock/Unlock function is only for Windows:

- 1)When the F1-F12 is Locked: You could use the Multi-Media functions directly. (Defaulted)
- 2)When the F1-F12 is Unlocked: You could use Multi-media Functions by Fn +F1-F12.

Lock /Unlock the F1-F12 Functions by :  + 

2. Press  key to use the keyboard on MAC OS devices.

You could use the Multi-Media Functions directly for Mac OS.

You could use F1-F12 Functions by Fn +F1-F12.

(Note: The F1-F12 Lock/Unlock function is not for Mac OS)

CORRECT DISPOSAL OF THIS PRODUCT



(Waste Electrical & Electronic Equipment) This Marking shown on the product or its literature, indicate that it should not be disposed with other household wastes at the end of its working life. To prevent possible harm to the environment or human health from uncontrolled waste disposal, please separate this from other types of wastes and recycle it responsibly to promote the sustainable reuse of material resources. Household user should contact either the retailer where they purchased this product, or their local government office, for details of where and how they can take this item for environmentally safe recycling. Business users should contact their supplier and check the terms and conditions of the purchase contract. This product should not be mixed with other commercial wastes for disposal.

FCC STATEMENT


Any Changes or modifications not expressly approved by the party responsible for compliance could void the user’s authority to operate the equipment. This device complies with part 15 of the FCC Rules. Operation is subject to the following two conditions: (1) This device may not cause harmful interference, and (2) this device must accept any interference received, including interference that may cause undesired operation.

FCC RADIATION EXPOSURE STATEMENT

This equipment complies with FCC radiation exposure limits set forth for an uncontrolled environment.



Documents / Resources

	amazon basics 230GL Wireless Keyboard and Mouse Combo with Backlit [pdf] User Manual B1AFVByf0RL, 230GL 621GL, 230GL Wireless Keyboard and Mouse Combo with Backlit, 230GL, Wireless Keyboard and Mouse Combo with Backlit, Keyboard and Mouse Combo with Backlit, Mouse Combo with Backlit, Combo with Backlit, Backlit
-------------------------------------------------------------------------------------	---------------------------------------------------------------------------------------------------------------------------------------------------------------------------------------------------------------------------------------------------------------------------------------------------------------------------------------------

References

- [User Manual](#)