

Amazon Basics 10W Wireless Charging Station



## amazon basics 10W Wireless Charging Station User Guide

[Home](#) » [amazon basics](#) » amazon basics 10W Wireless Charging Station User Guide 

### Contents

- [1 Amazon Basics 10W Wireless Charging Station](#)
- [2 USING INSTRUCTION](#)
- [3 Documents / Resources](#)
  - [3.1 References](#)
- [4 Related Posts](#)

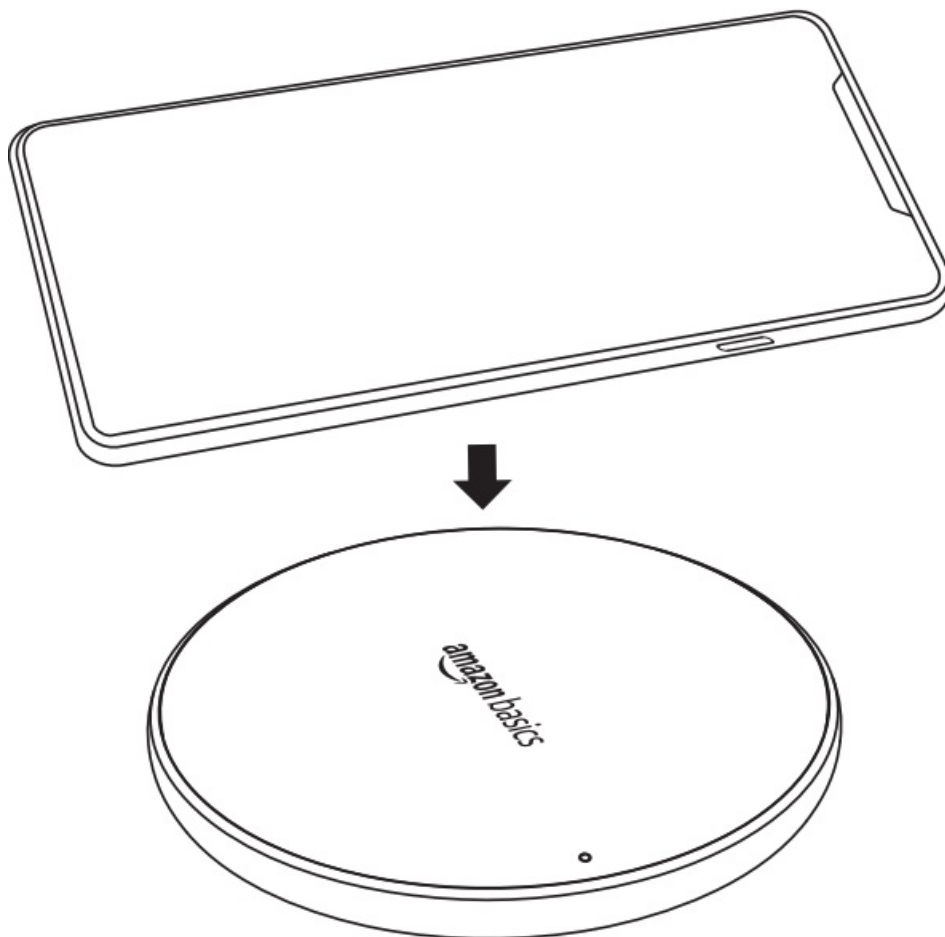
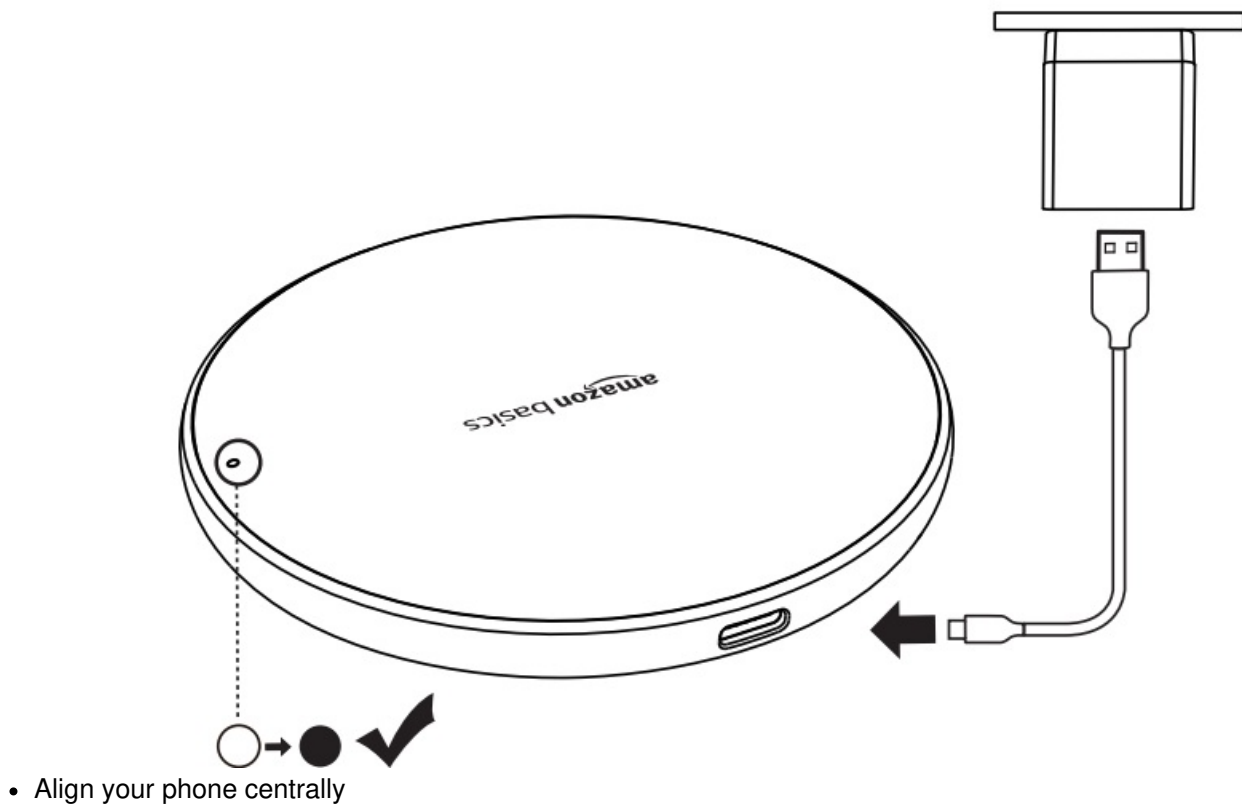
amazon basics

### Amazon Basics 10W Wireless Charging Station

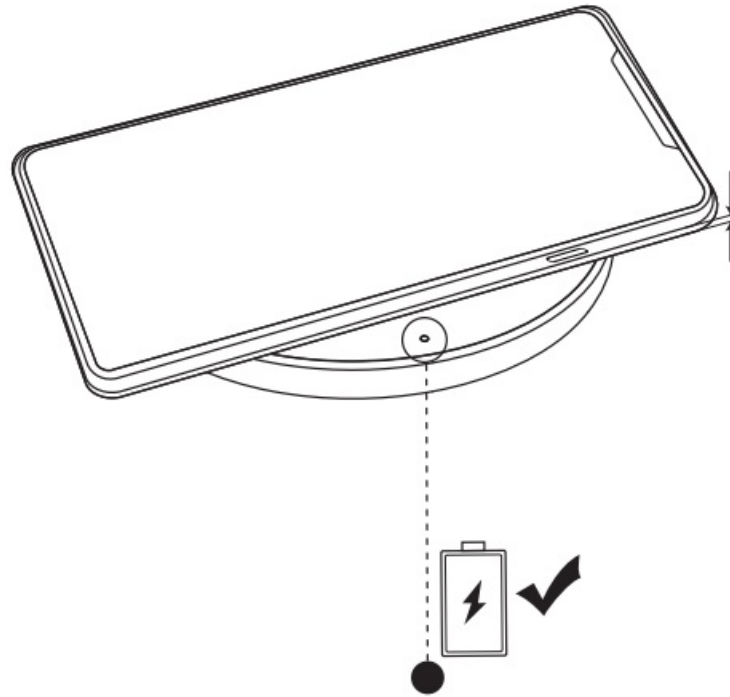


### USING INSTRUCTION

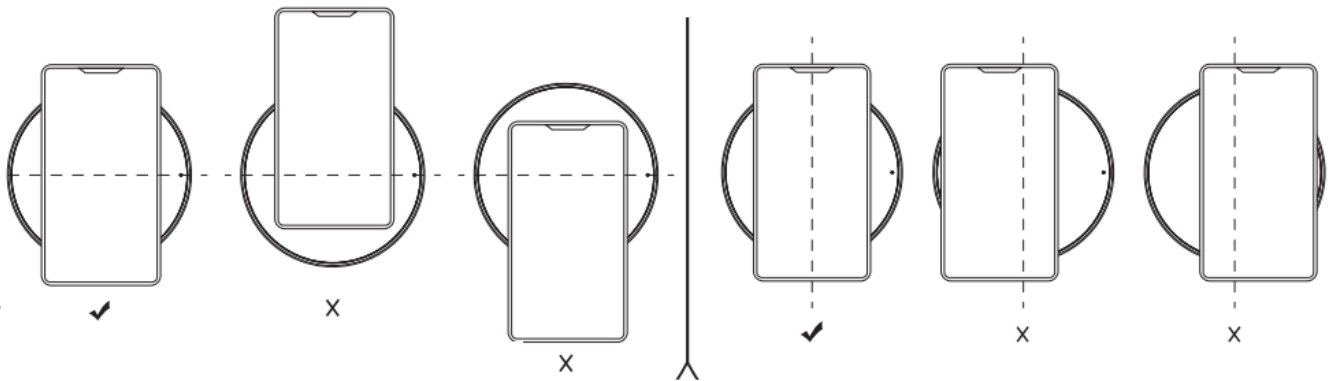
- **Power on:** Blue Flash (One Time)



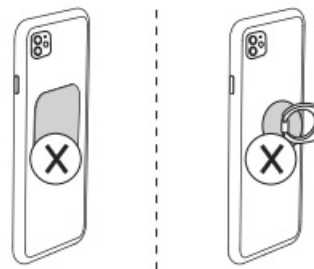
- **Charging:** Blue Pulsing
- **Phone Case** < 5mm
- **Fully Charged:** Blue Pulsing
- **Standby:** Solid Blue
- **Foreign Object Detected:** Flashing Green
- **Wrong Wall Charger:** Green Pulsing



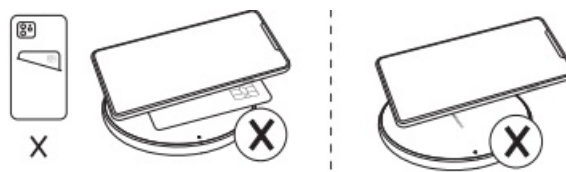
- Align your phone centrally
- Align your phone centrally






- Magnetic or metal attachments and other foreign objects will interfere with the charging




- Magnets
- Grips + Stands
- Credit Cards
- Metal Cases



				
All Qi-enabled phones and devices Tout téléphone ou périphérique compatible Qi	+	5 V= 2 A	=	Standard charge mode (5 W) Mode de chargement standard (5 W)
iPhone 11 iPhone 11 Pro iPhone 11 Pro Max iPhone XS Max iPhone XR iPhone XS iPhone X iPhone 8 iPhone 8 Plus, etc	+	9 V= 2 A 12 V= 1.5 A Quick Charge 3.0 PD3.0 Charge 9 V= 2 A 12 V= 1,5 A Charge rapide 3.0 Chargement PD 3.0	=	Fast charge mode (7.5 W) Mode de chargement rapide (7,5 W)
Samsung Galaxy S10/ S+9 /S9/ S8 /S+8 /S7 edge/ S7/ S6 edge+, Note 10/ Note 9/ Note 8/ Note 7, etc	+	9 V= 2 A 12 V= 1.5 A Quick Charge 3.0 PD3.0 Charge 9 V= 2 A 12 V= 1.5 A Quick Charge 3.0 Chargement PD 3.0	=	Fastcharge mode (10 W) Mode de chargement rapide (10 W)
LG V30/ V+30/ V35/ V40/ V50/ G8/G7, etc	+		=	

## Documents / Resources

	<a href="#">amazon basics 10W Wireless Charging Station</a> [pdf] User Guide 10W Wireless Charging Station, 10W, Wireless Charging Station, Charging Station, Station
---	--

## References

- [User Manual](#)

[Manuals+](#), [Privacy Policy](#)

This website is an independent publication and is neither affiliated with nor endorsed by any of the trademark owners. The "Bluetooth®" word mark and logos are registered trademarks owned by Bluetooth SIG, Inc. The "Wi-Fi®" word mark and logos are registered trademarks owned by the Wi-Fi Alliance. Any use of these marks on this website does not imply any affiliation with or endorsement.