



## AMASE AUDIO 10.1 Rotated Touchscreen Android 10 Car Stereo Instruction Manual

[Home](#) » [AMASE AUDIO](#) » AMASE AUDIO 10.1 Rotated Touchscreen Android 10 Car Stereo Instruction Manual 



V2  
Installation manual



Universal 10.1inch Deckless  
Android (1028)  
Are you ready to install our unit?  
Let's go >>>

## Contents

- 1 10.1 Rotated Touchscreen Android 10 Car Stereo
- 2 Accessories
- 3 Wiring diagram
- 4 Wire connection for the amplifier, the subwoofer and the headset monitors
- 5 Optional : Install a rear camera
- 6 Cable connection
- 7 System Initial setup
  - 7.1 About after sales service
- 8 Documents / Resources
  - 8.1 References

## 10.1 Rotated Touchscreen Android 10 Car Stereo

### 4 steps to instal

#### STEP 01

##### Check

- 1) Do the screen is broken ?
- 2) Do the accessories have missing ?

#### STEP 02

Test your unit before a full installation. (Connect the power cable to your car)

#### STEP 03

Do the full installation.

#### STEP 04

Test the head unit functions.

### Accessories



1. Power cable \* 1
2. GPS antenna \* 1
3. USB Adapter cable \*1
4. USB adapter cable \*1
5. External microphone \*1

6. Wi-Fi antenna \*1
7. Disassembly tool \*1
8. 15A fuse \*1
9. Mounting brackets \*2 with short screws \*8

## STEP 02

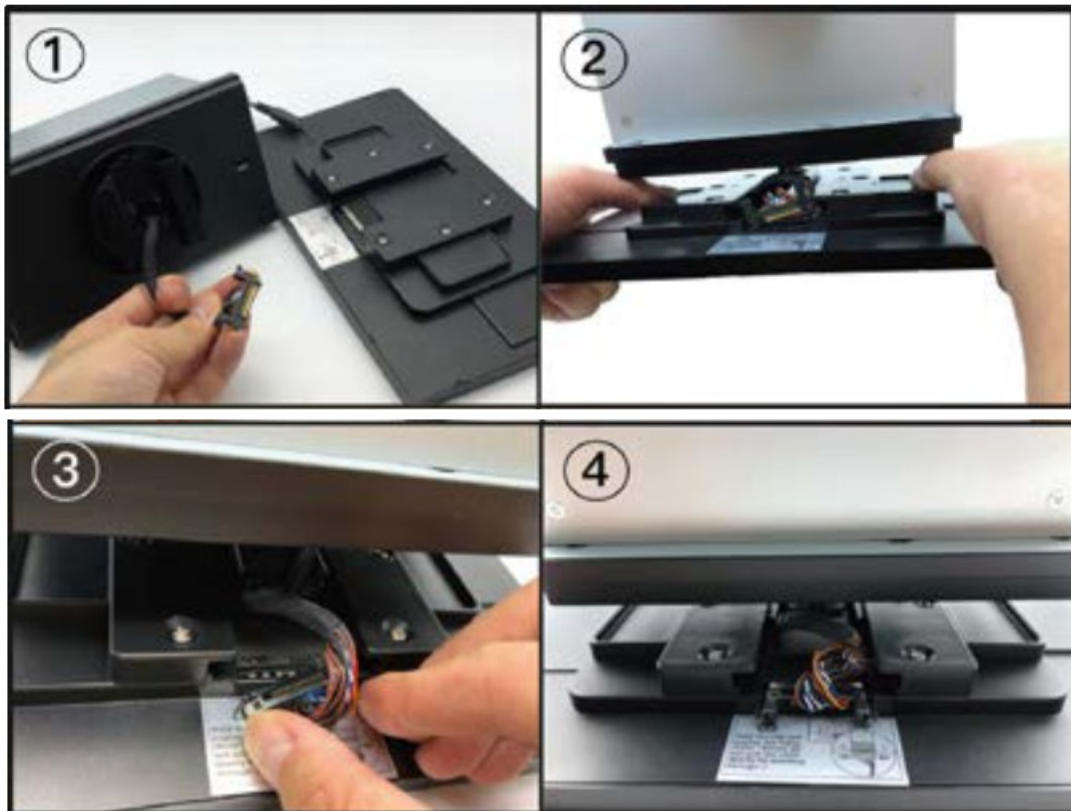
### Test your unit before a full installation. (Connect the power cable to your car)

After you remove the factory radio, you can take out the power cable to connect the head unit and casually connect the screen cable to the screen, then try to turn it on. If this part is no problem, you can do the remain steps.

## STEP 03 Do the full installation.

### 1. Install the screen

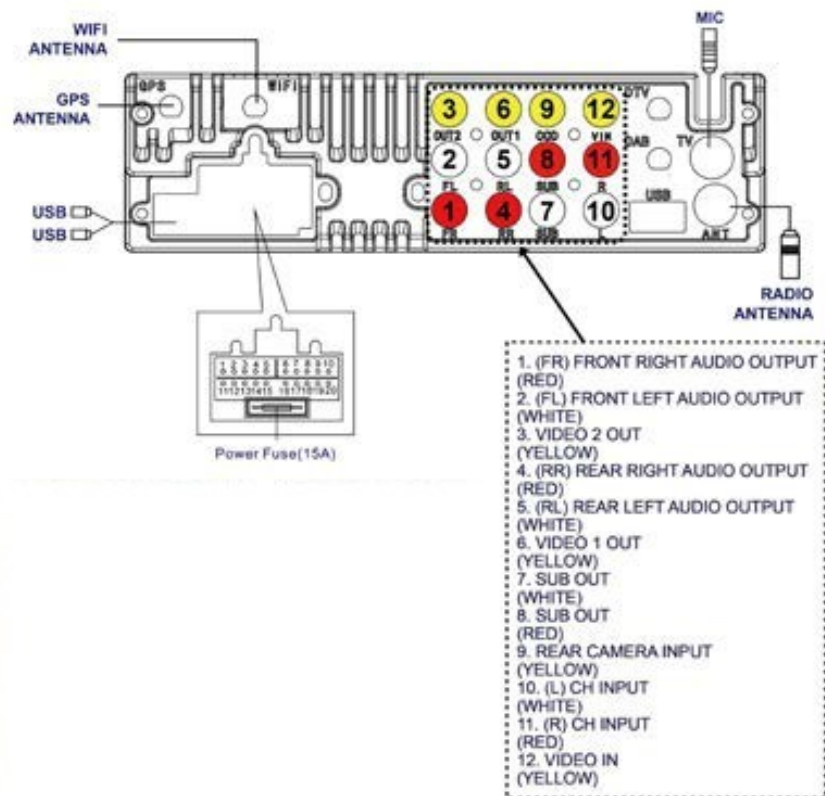
- Push the screen into the unit with your hands like (2).
  - Hold the clip of cable and lightly put one side to connect the plug of unit and then completely connect.
- (Please keep the car engine turn off when you do this step)



3. Connect those wires provided in the package like (1) Power cable, (2) USB cable, (3) GPS antenna, (4) Wi-fi antenna and (6) External microphone as shown.



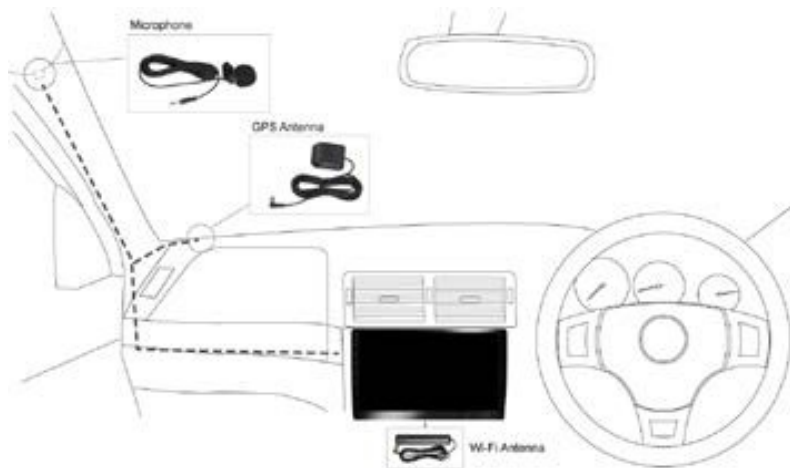
## Wiring diagram



1. Power amplifier control
2. Steering wheel control 2
3. Steering wheel control 4
4. Brake wire
5. Auto antenna power
6. Rearview control wire
7. Rear left speaker-
8. Rear left speaker+
9. Rear right speaker-
10. Rear right speaker+

11. CANBUS TX [IR]
12. CANBUS RX (GND)
13. ILLUMI
14. Accessory
15. Ground
16. Powers 12
17. Front left speaker -
18. Front left speaker +
19. Front right speaker-
20. Front right speaker +

4. Install the screen and plug the head unit into the center console, then place the GPS antenna and microphone as shown. The wires are hidden in the side of pillar trim and led to the head unit.



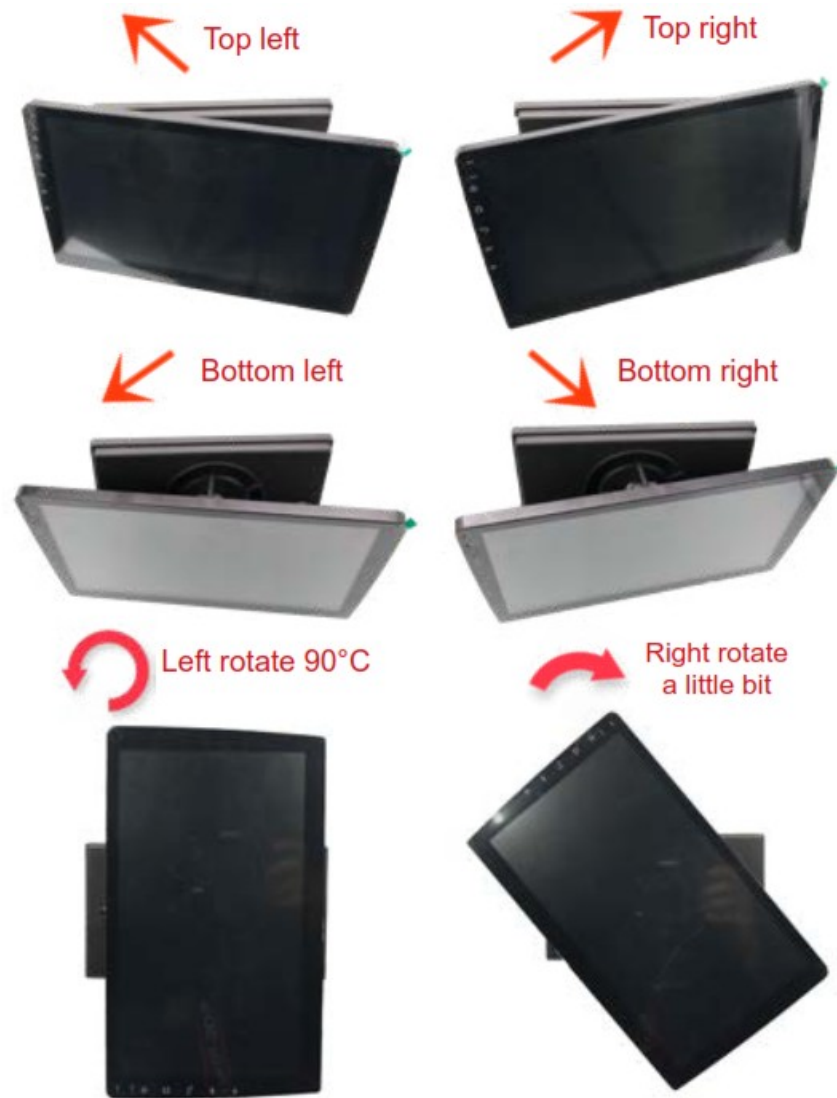
#### STEP 04

##### Test the head unit functions.

(FM, SD, USB, Bluetooth, reversing, handbrake, headlight and etc)

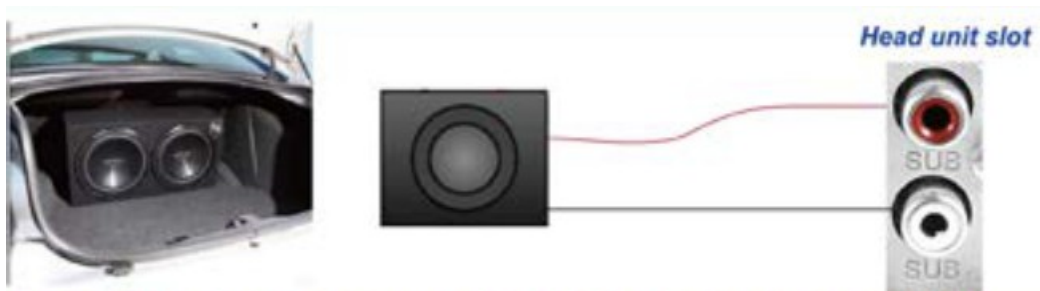


About the screen rotated features



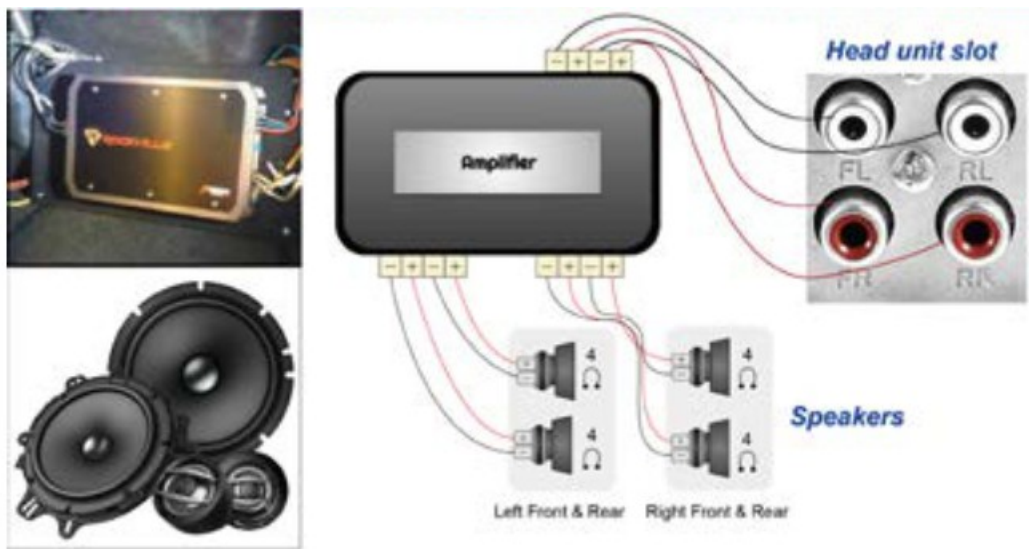
## Wire connection for the amplifier, the subwoofer and the headset monitors

Case 1: The subwoofer connects to the head unit

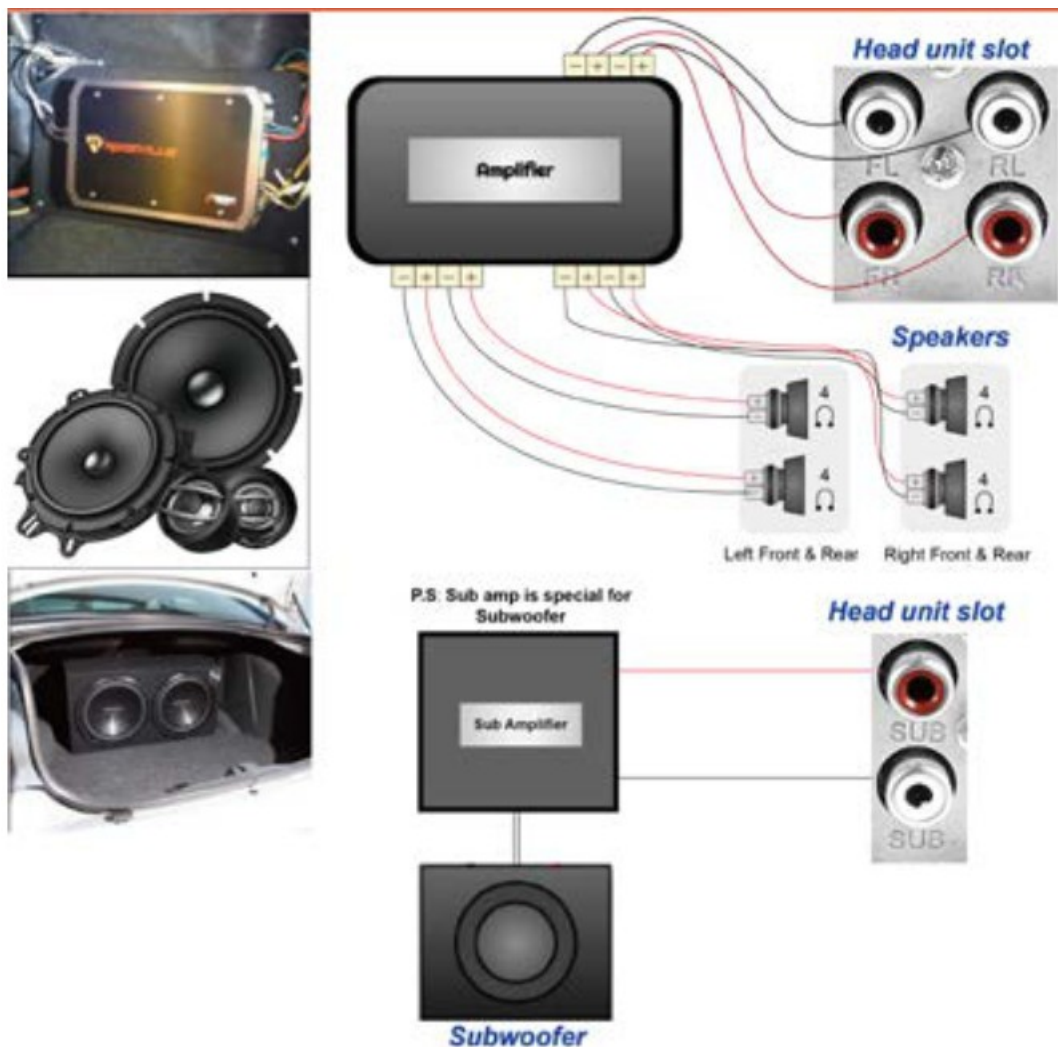


Case 2: The 2/4 speakers with an amplifier are connected to the head unit.





Case 3: The 2/4 speakers with an amplifier and the subwoofer with an amplifier are separately connected to the head unit.



**Optional : Install a rear camera**

Our main unit only syncs the rear camera but not the front camera.



## Cable connection

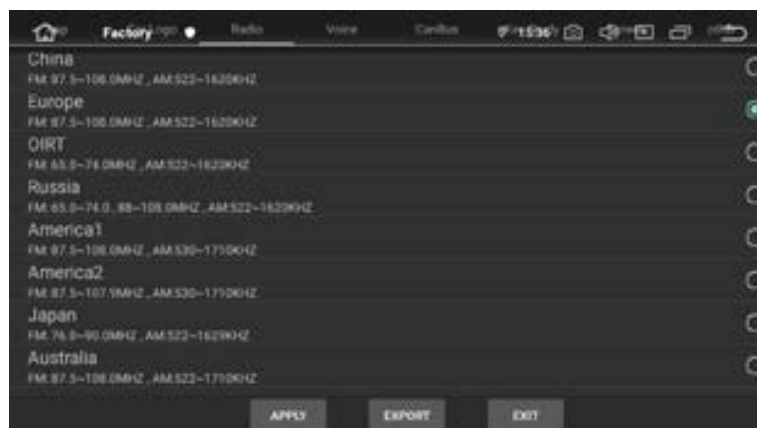


The ASIN of this rear camera has placed in the listing.

## System Initial setup

### 1. Set radio location

The default radio country in the unit is Europe, if you are from other country, you need to access the "factory mode (PW: 126) > Radio" to adjust the country.



### 2. Set RDS

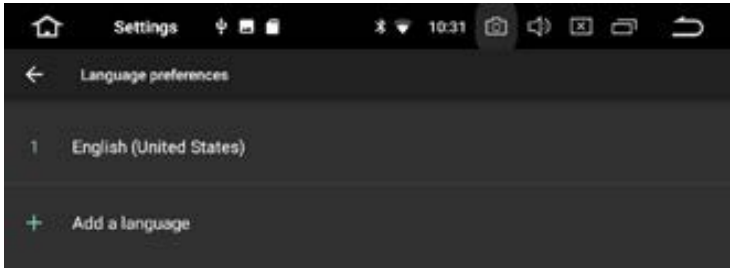


The Radio has RDS function but this function is only for Europe, if the clients from other countries use it, it will affect the radio receive, so please close it.



3. Set the unit language


Please go to setting > Languages & input, then you can add the desirable language you need.



About after sales service

Q: Do my head unit has one year maintenance?  
A: Definitely yes, you will have our commitment after you purchase.  
(The maintenance period will base on the date you make the order)

Documents / Resources

	<p><a href="#">AMASE AUDIO 10.1 Rotated Touchscreen Android 10 Car Stereo</a> [pdf] Instruction Manual 10.1 Rotated Touchscreen Android 10 Car Stereo, 10.1, Rotated Touchscreen Android 10 Car Stereo, Touchscreen Android 10 Car Stereo, Android 10 Car Stereo, 10 Car Stereo, Car Stereo</p>
---	---

References

- [User Manual](#)

Manuals+, Privacy Policy

This website is an independent publication and is neither affiliated with nor endorsed by any of the trademark owners. The "Bluetooth®" word mark and logos are registered trademarks owned by Bluetooth SIG, Inc. The "Wi-Fi®" word mark and logos are registered trademarks owned by the Wi-Fi Alliance. Any use of these marks on this website does not imply any affiliation with or endorsement.