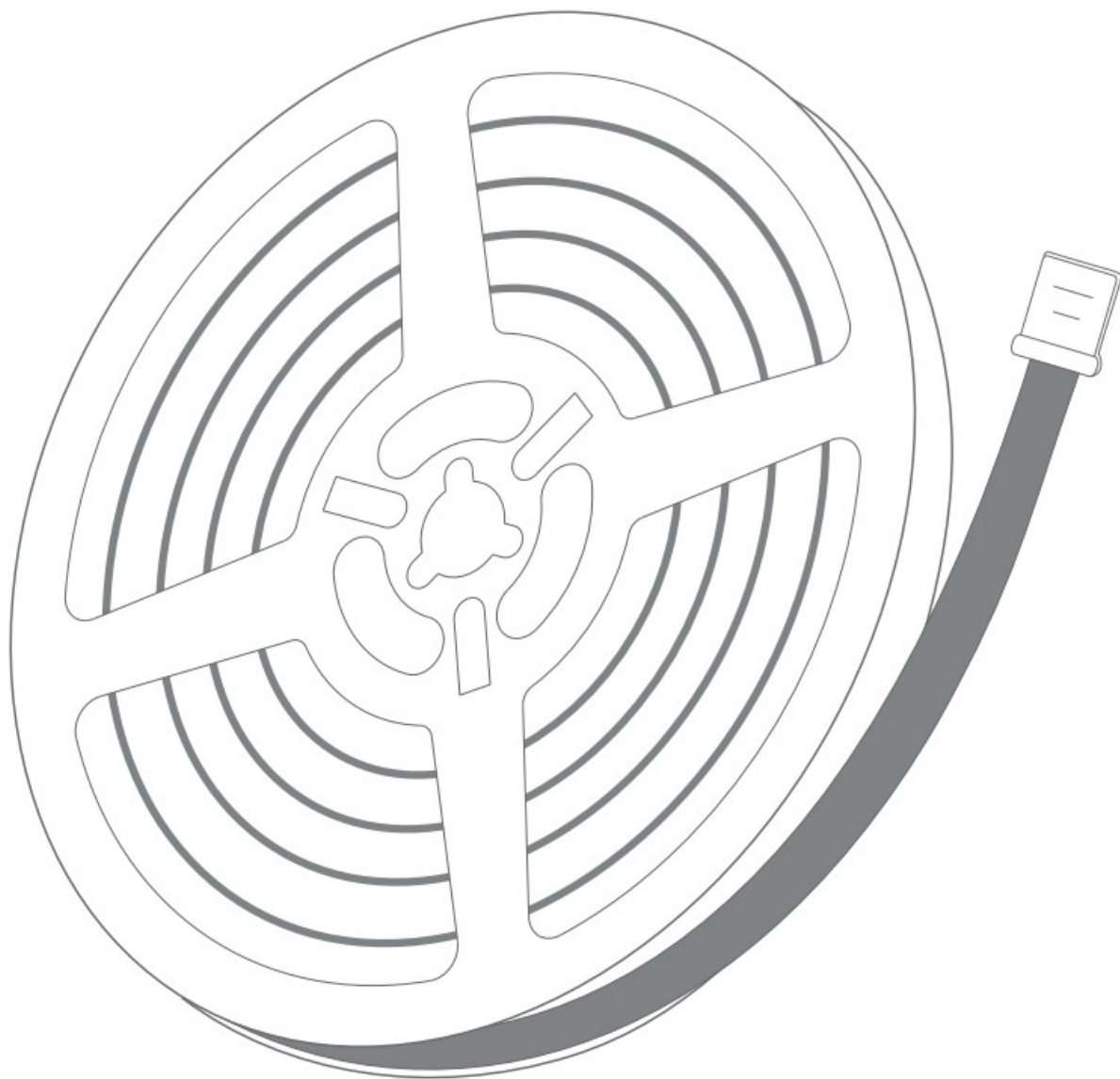




amaran SM5c Smart Pixel Strip Light User Manual

[Home](#) » [amaran](#) » amaran SM5c Smart Pixel Strip Light User Manual 

amaran[®]
SM5c Smart Pixel Strip Light
User Manual



amaran SM5c

Product Manual

Contents

- [1 Foreword](#)
- [2 Components List](#)
- [3 Product Details](#)
- [4 Control box](#)
- [5 Setting Up the Light](#)
- [6 Powering up the Light](#)
- [7 Operate](#)
- [8 Using the Sidus Link APP](#)
- [9 Specification](#)
- [10 Documents / Resources](#)
- [11 Related Posts](#)

Foreword

Thank you for purchasing the “amaran” strip light – amaran SM5c.

Amaran SM5c is a newly designed and cost-effective light strip from amaran. The light strip emits soft light and has excellent texture. It has smart voice control and professional lighting APP control, and with dynamic pixel

effects, it can easily create a colorful atmosphere for streaming and daily life.

IMPORTANT SAFETY INSTRUCTIONS

When using this unit, basic safety precautions should always be followed, including the following:

1. Read and understand all instructions before using.
2. Close supervision is necessary when any fixture is used by or near children. Do not leave the fixture unattended while in use.
3. Care must be taken as burns can occur from touching hot surfaces.
4. Do not operate the fixture if a cord is damaged, or if the fixture has been dropped or damaged, until it has been examined by qualified service personnel.
5. Position any power cables such that they will not be tripped over, pulled, or put into contact with hot surfaces.
6. If an extension cord is necessary, a cord with an amperage rating at least equal to that of the fixture should be used. Cords rated for less amperage than the fixture may overheat.
7. Always unplug the lighting fixture from the electrical outlet before cleaning and servicing, or when not in use. Never yank the cord to remove the plug from the outlet.
8. Let the lighting fixture cool completely before storing. Unplug the power cable from lighting fixture before storing and store the cable at assigned space.
9. To reduce the risk of electric shock, do not immerse this fixture in water or any other liquids.
10. To reduce the risk of fire or electric shock, do not disassemble this fixture. Contact cs@aputure.com or take the lighting fixture to qualified service personnel when service or repair is required. Incorrect reassembly may cause electric shock when the lighting fixture is in use.
11. The use of any accessory attachment not recommended by the manufacturer may increase the risk of fire, electric shock, or injury to any persons operating the fixture.
12. Please power this fixture by connecting it to a grounded outlet.
13. Please do not block the ventilation or do not look at the LED light source directly when it is powered on. Please do not touch the LED light source in any condition.
14. Please do not place the LED lighting fixture near any flammable object.
15. Only use a dry microfiber cloth to clean the product.
16. Please do not use the light fixture in wet condition on account of electric shock may be
17. Please have the product checked by an authorized service personnel agent if the product has a problem. Any malfunctions caused by unauthorized disassembly are not covered by the warranty. The user may pay for maintenance.
18. We recommend only using the original Aputure cable accessories. Please note that any malfunctions caused by using unauthorized accessories are not covered by the warranty. The user may pay for maintenance.
19. This product is certified by RoHS, CE, KC, PSE, and FCC. Please operate the product in full compliance with relevant country's standards. Any malfunctions caused by incorrect use are not covered by warranty. The user may pay for maintenance.
20. The instructions and information in this manual are based on thorough, controlled company testing procedures. Further notice will not be given if the design or specifications change.

SAVE THESE INSTRUCTIONS

FCC Compliance Statement

This device complies with Part 15 of the FCC Rules. Operation is subject to the following two conditions:

1. This device may not cause harmful interference.
2. This device must accept any interference received, including interference that may cause undesired operation.

WARNING

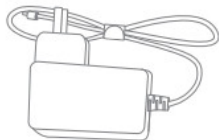
Changes or modifications not expressly approved by the party responsible for compliance could void the user's authority to operate the equipment.

NOTE: This equipment has been tested and found to comply with the limits for a Class B digital device, pursuant to Part 15 of the FCC Rules. These limits are designed to provide reasonable protection against harmful interference in a residential installation. This equipment generates, uses, and can radiate radio frequency energy and, if not installed and used in accordance with the instructions, may cause harmful interference to radio communications. However, there is no guarantee that interference will not occur in a particular installation. If this equipment does cause harmful interference to radio or television reception, which can be determined by turning the equipment off.

- Increase the separation between the equipment and receiver.
- Connect the equipment to an outlet on a different circuit than the receiver is connected to.
- Consult the dealer or an experienced radio/TV technician for help.
- This device has been evaluated to meet general RF exposure requirements.

Components List

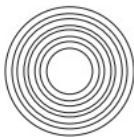
Please make sure all accessories listed below are completed before using. If not, please contact with your sellers immediately.



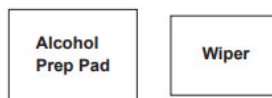
Power adapter (1 pc)



Controller (1 pc)



Double-sided tape (1 pc)



Cleaning kit (1 set)

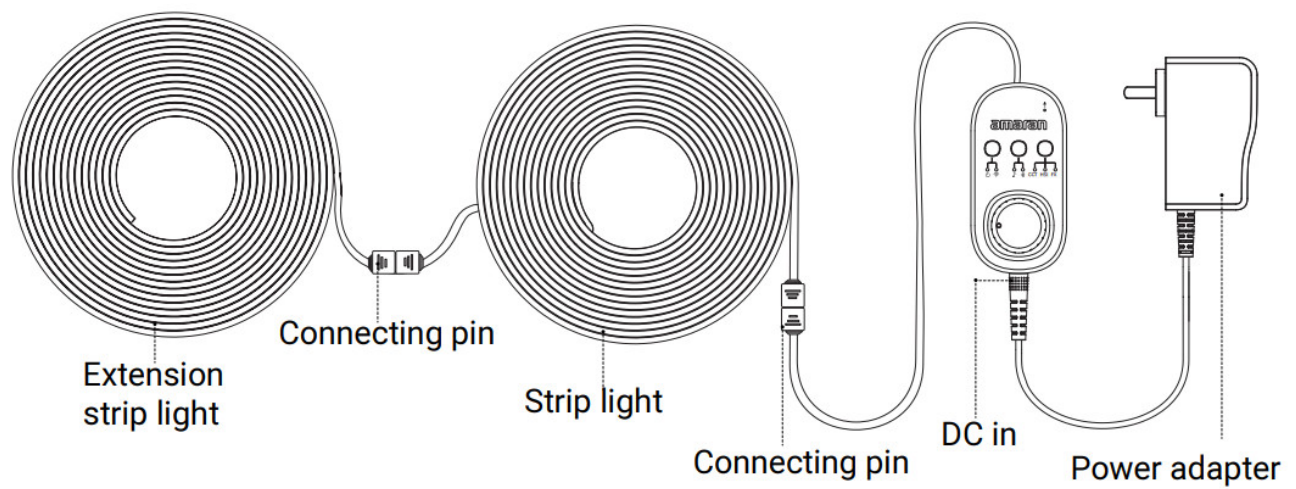


Strip light (1 pc)

Tips: The illustrations in the manual are only diagrams for reference. Due to the continuous development of new versions of the product, if there are any differences between the product and the user manual diagrams, please refer to the product itself.

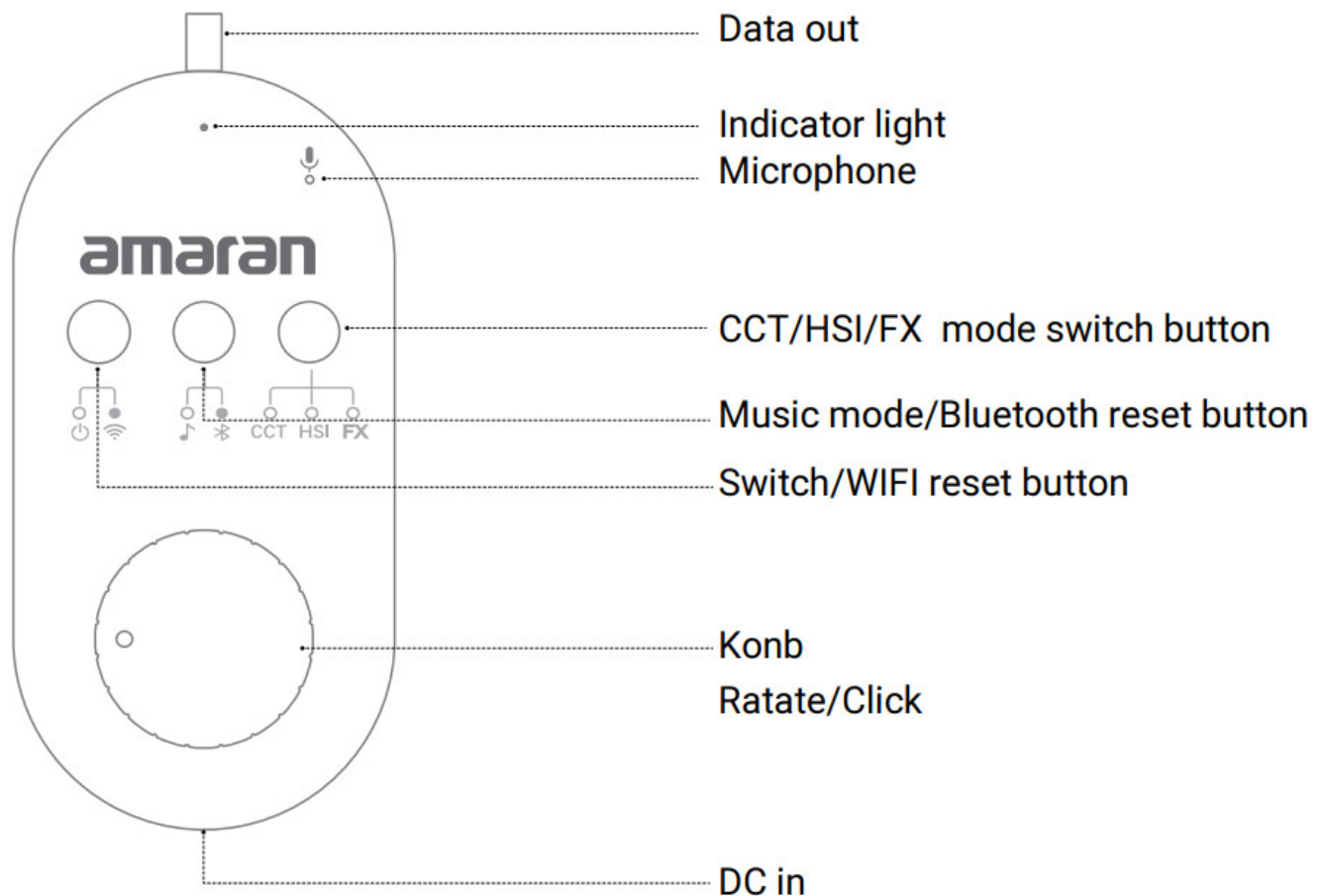
Product Details

1. Strip light



Tips The extension strip light needs to be purchased separately.

Control box

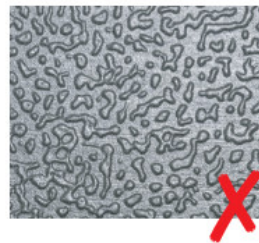
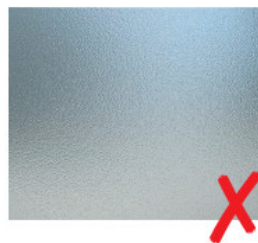


Setting Up the Light

Install strip light

1. Choose a dry, neat and smooth surface to install the strip light.

Tip: Do not install strip light on surfaces such as fabric, dusty walls, rough plastic, and frosted glass.



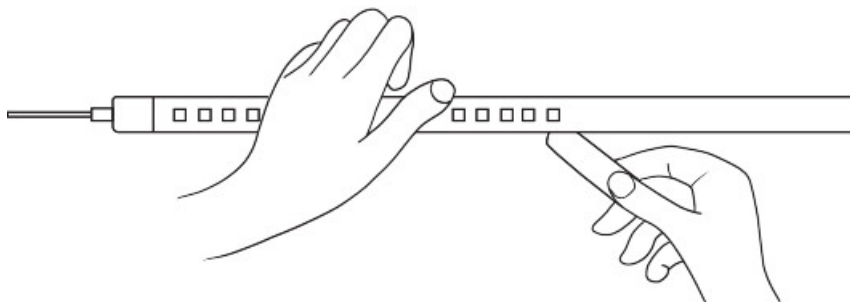
2. Clean the mounting surface with the included cleaning kit.



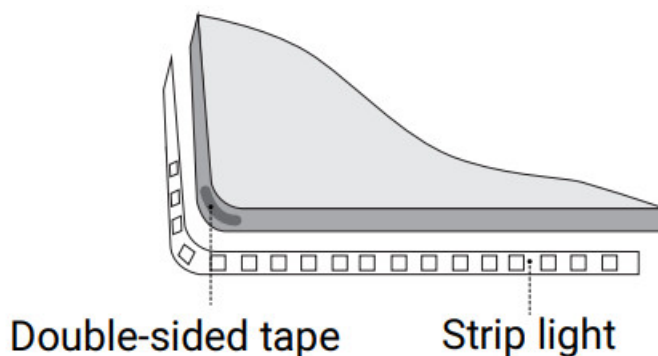
3. When the temperature is lower than 10°C/50°F, please use a hair dryer to heat it before installation to achieve the best bonding effect.



4. After confirming the installation position, tear off the dustproof paper tape of the double-sided tape on the back of the strip light , and install the strip light in place.



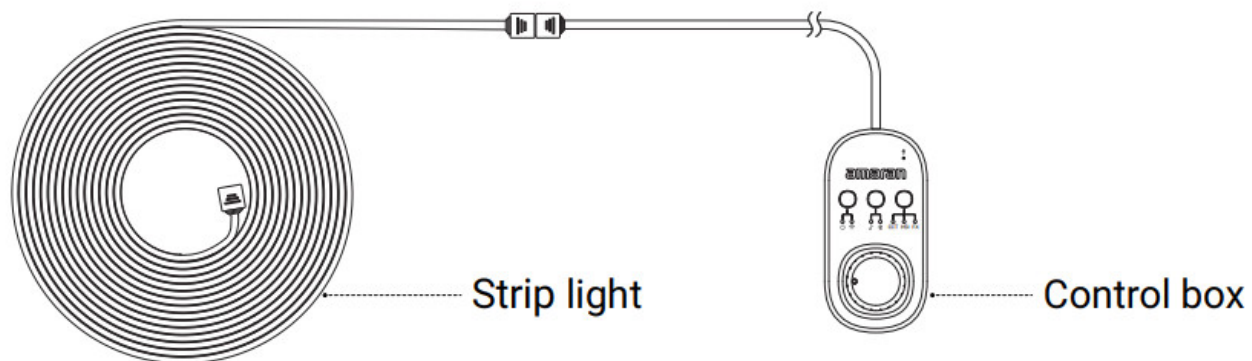
5. After the strip light is installed, use double-sided tape to reinforce the corners or the places where the paste is not strong.



6. After arranging the control box and wires to the proper position, fix them with double-sided tape.

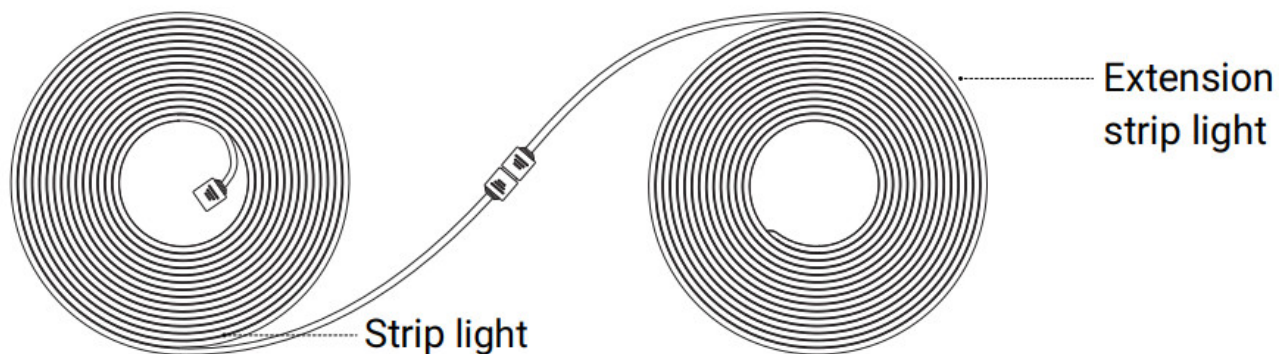
Powering up the Light

1. Connect the control box and the strip light.

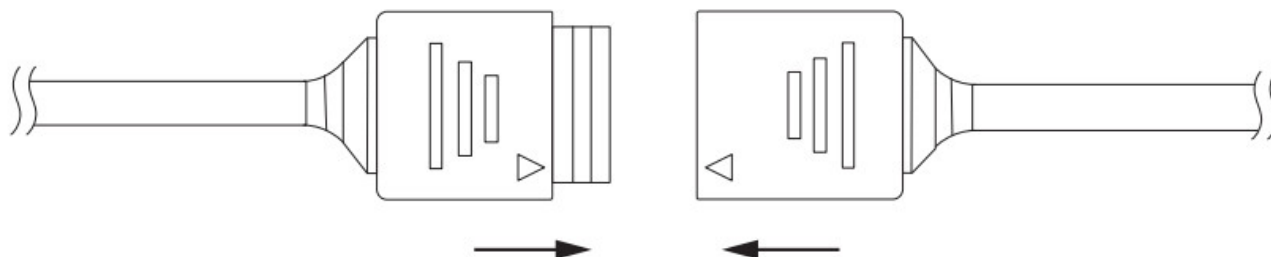


2. Connect the light strip and the extension light strip.

Light strip and extension light strip are connected via connector



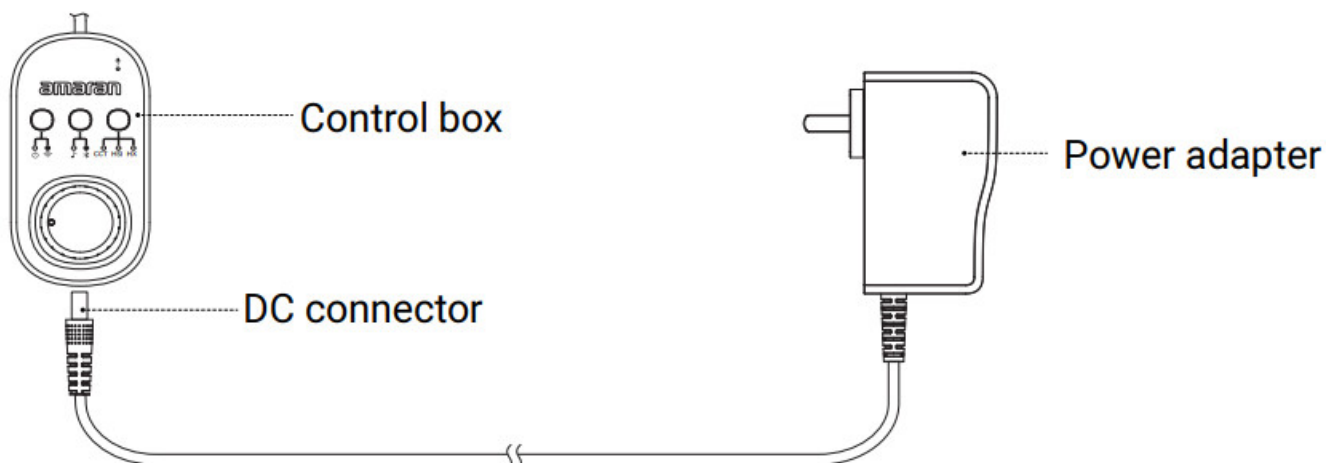
The side with the triangle mark on the connector must be on the same side, do not insert it backwards.



Tips:

- One controller can connect up to 5m strip light + 5m extension strip light. And you need to install the strip light to the controller first, and then install the extension strip light.
- The extension strip light needs to be purchased separately.

Connect the control box and the power adapter.



Plug the adapter into the socket.

Operate

1. Manual Control

ON-OFF / Wi-Fi reset button:

Short press the button to switch the strip light on and off, press and hold the button for three seconds to reset the Wi-Fi. After the Wi-Fi reset is successful, the indicator light will flash quickly.

Music mode/Bluetooth reset button:

Short press the button to enter the music mode, press and hold the button for three seconds to reset the Bluetooth. After the Bluetooth reset is successful, the indicator light will flash quickly.

CCT/HSI/FX mode switch button:

Switch among three modes.

Knob:

In CCT mode, rotate the knob to adjust the brightness, click the knob to switch to adjust the color temperature.

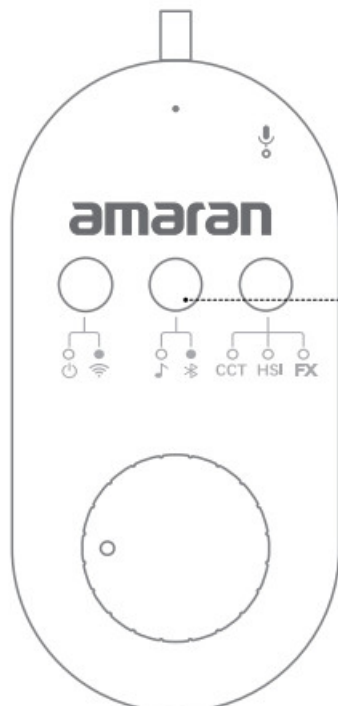
In HSI mode, rotate the knob to adjust the brightness, click the knob to switch to adjust the color.

In FX mode, rotate the knob to adjust the brightness, click the knob to switch to adjust the light effects.

2. Connect to Sidus Link APP control

2.1. Download the “Sidus Link” APP with a smartphone or tablet and register an account. Then turn on the Bluetooth of your phone or tablet.

2.2. Short press the “Power On/WIFI Reset” button to power on, then press and hold the “Music/Bluetooth Reset” button for 3s until the indicator light flashes quickly, which means the Bluetooth reset is successful.

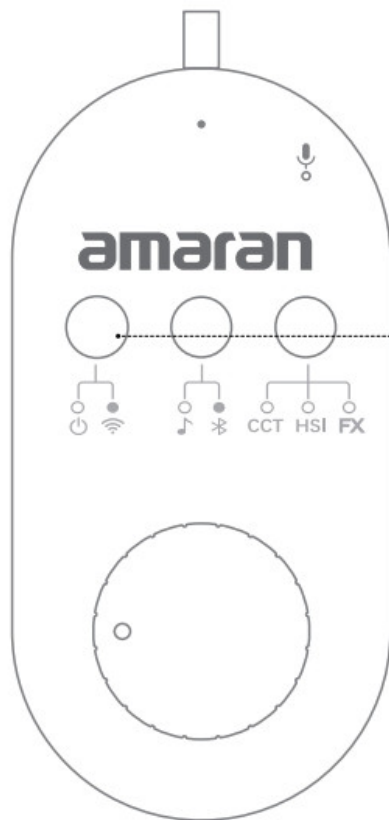


Press and hold "Music/Bluetooth Reset" for 3 seconds to reset Bluetooth

2.3. Open the Sidus Link APP to add the strip light. After the connection is successful, the strip light can be controlled.

3. Connect smart speaker control

3.1 Short press the “Power On/WIFI Reset” button to power on the strip light, then press and hold the “Power On/Wi-Fi Reset” button for 3s to reset the Wi-Fi until the indicator light flashes quickly, which means the Wi-Fi reset is successful.



Press and hold " Power On/WIFI Reset " for 3 seconds to reset Wi-Fi

3.2 Connect your phone or tablet to a stable Wi-Fi wireless network. Download the "Tuya Smart" APP with a smartphone or tablet and register an account.

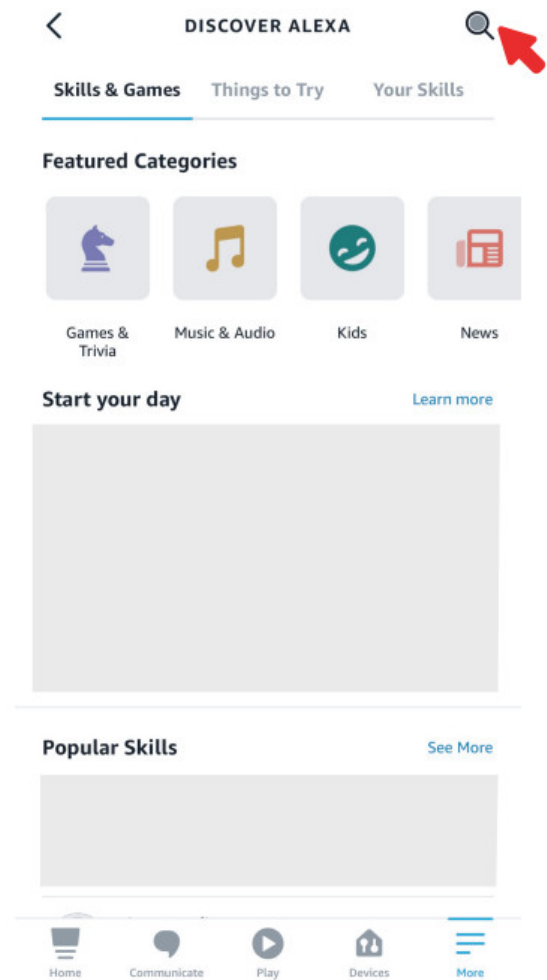
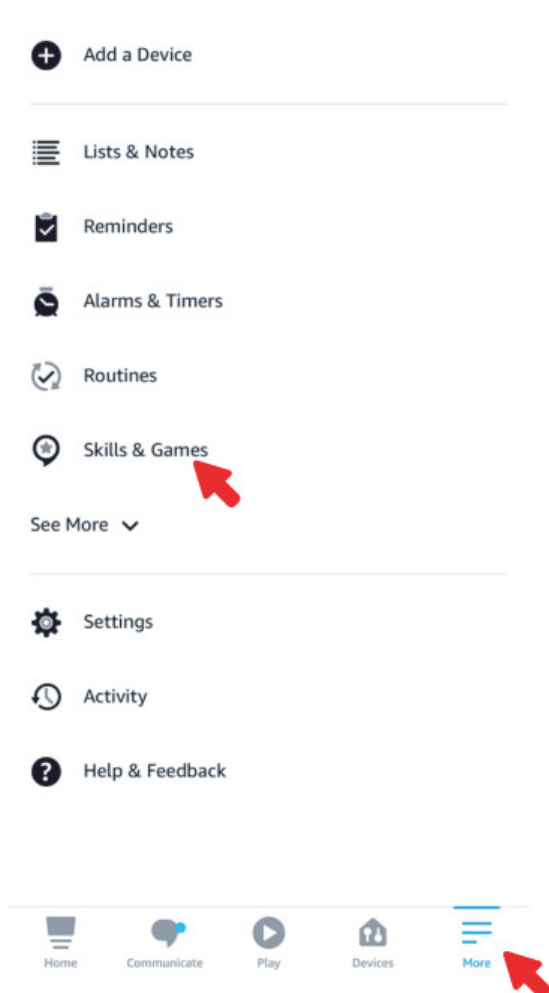
3.3 Open the "Tuya Smart" APP, and follow the instructions to add the SM5c strip light with Wi-Fi reset. After the addition is complete, you can control the strip light through the "Tuya Smart" APP.

3.4 .Bind "Tuya Smart" account and smart speaker account

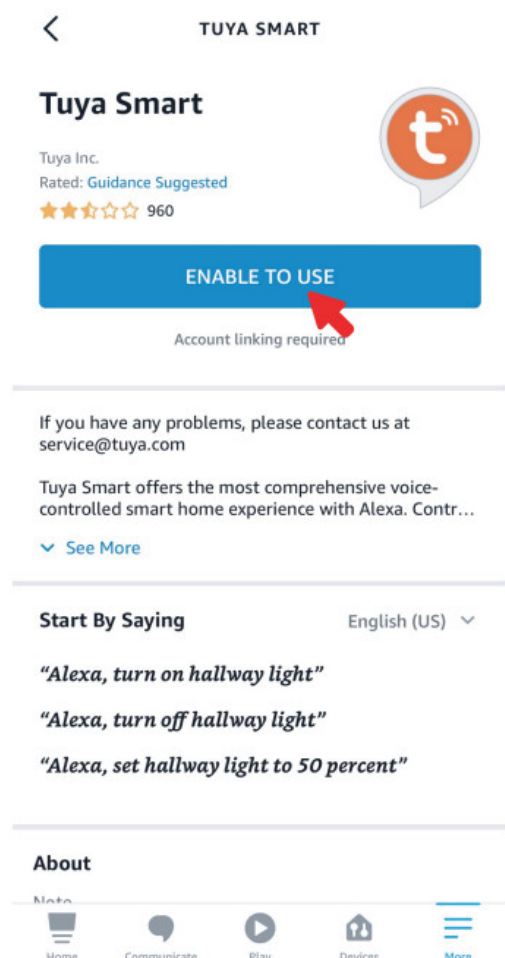
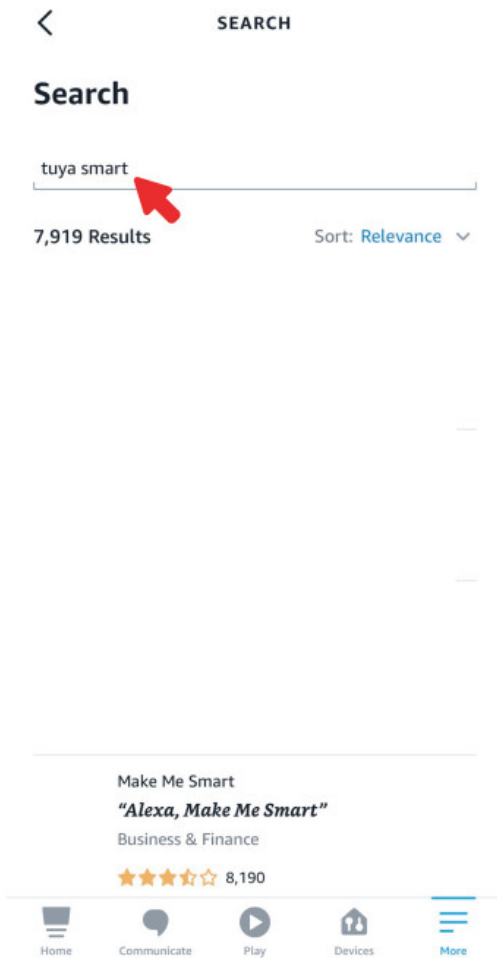
SM5c supports "amazon alexa", "Google assistant", smart speakers voice control. The way to pair smart speakers with strip light are as follows:

3.4.1 Bind the "amazon alexa" account and "Tuya smart" account

3.4.2. Click "More" in the bottom right corner of the Home page, Select the "Skills & Games"



3.4.3 Enter and search for “Tuya Smart” in the pop-up search box, and then click “ENABLE TO USE”.



3.4.4 Select the country to which your account belongs and enter the account and password of the “Tuya Smart” APP, and bind the “Tuya Smart” and “amazon alexa” accounts.

ACCOUNT LINKING

Done pxy1.tuya.com AA ↻

Switch to China English

United States of America

Phone Number/Email Address

I have read and accept [Service Terms](#) [Third Party Information Sharing Checklist](#) [Tuya Smart Privacy Policy](#)

Next Step

Forgot Password Help

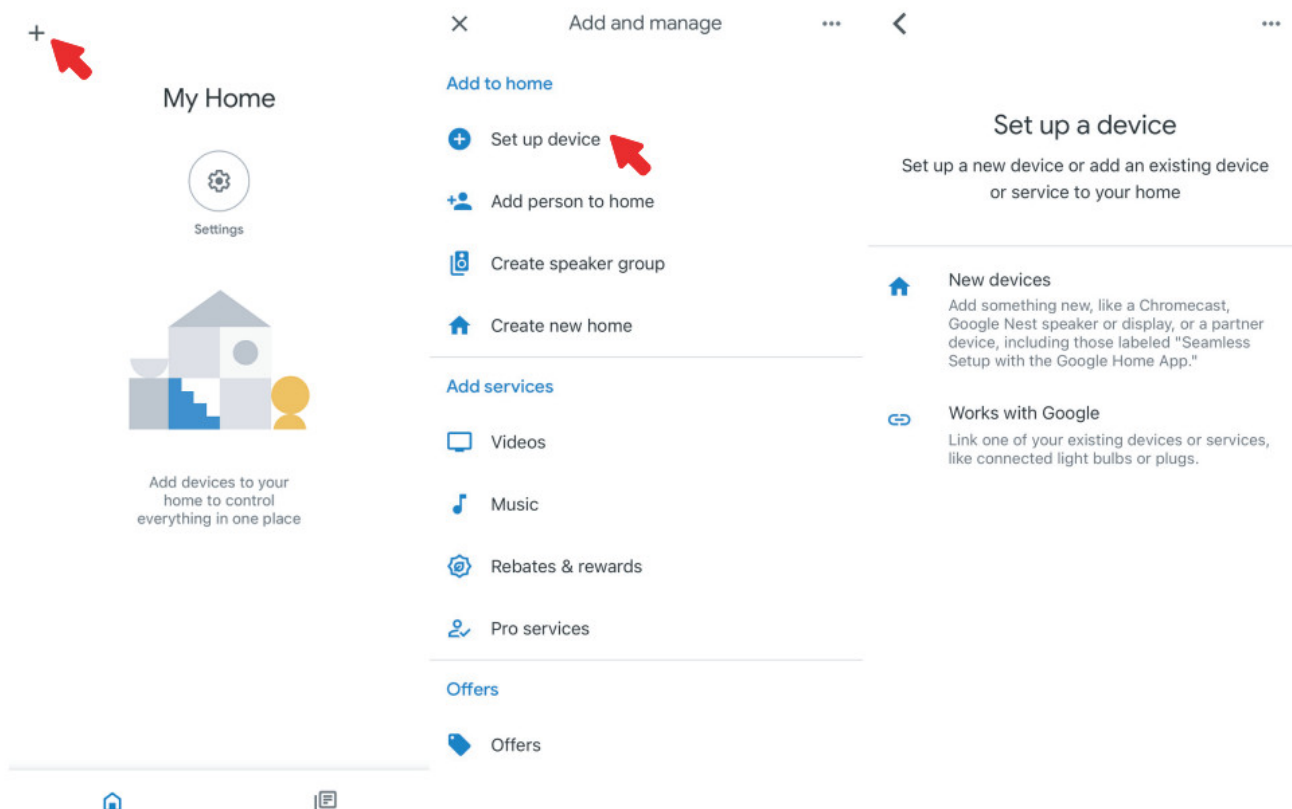
What to do next:

Close this window to discover smart-home devices you can control with Alexa.

CLOSE

4. Bind the “Google Assistant” account and “Tuya smart” account

(1) Open the “Google Home” APP, click the “+” button in the upper left corner of the home page. Select “Set up device”, and select “Works with Google” under the list.



(2) Search for “Tuya Smart” in the list and open it, enter your “Tuya Smart” App account and password, and

click “Link Now” to complete the binding.

The image shows a mobile application interface for Tuya Smart. At the top, there is a search bar with the text "Tuya smart" and a magnifying glass icon. To the right of the search bar is a "Done" button and a lock icon followed by the URL "pxy1.tuya.us.com". Below the search bar is a light blue box with the text "Add new". The main content area is a large light blue rectangle. To the right of this rectangle, there is a language selector set to "English", a Tuya logo, a country selector set to "United States of America", a "Phone Number/Email Address" input field, a checkbox for "Email Address/Phone Number", and a "Next Step" button. At the bottom, there are navigation arrows and a share icon.

Tips:

- The realization of the smart voice control function is based on a Wi-Fi environment with stable network service and a compatible smart speaker. Smart speakers need to be purchased by customers themselves.
- Due to the update of the APP, the actual operation may be different from the above description, please follow the operation guidelines in each APP.

5. Precautions

- Do not use the strip light on the reel for a long time to avoid overheating and damage to the strip light.
- The minimum bending diameter of the strip light is 5cm. Do not wrap the strip light around objects with a diameter of less than 5cm or fold the strip light in half.
- It is recommended to use transparent double-sided adhesive tape to reinforce the corners where the strip light is installed to avoid falling off.
- The controller can support up to 10 meters of strip light, please do not use more than this length.
- This strip light is not waterproof, please do not immerse the strip light in liquid.
- The optimal distance for music mode is 30cm from the music source to the control box.
- It is not recommended to cut the strip light, as some light effects will be incomplete after cutting.

Using the Sidus Link APP

You can download the Sidus Link app from the iOS App Store or Google Play Store for enhancing the functionality of the light. Please visit sidus.link/app/help for more details regarding how to use the app to control your

Aputure lights.



Get Sidus Link App

Sidus.link/app/help




Specification

Power Input	20W (Max)
Operating Current	1.7A (Max)
Voltage	12V
Strip Light Length	5m
Extension Strip Light length (Purchased Separately)	5m
Operating Temperature	-10°C — 40°C
Controlling Method	Manual, Sidus Link APP, smart voice control
Cooling Method	Natural heat dissipation

Trademarks

- Amazon alexa is a trademark registered by Amazon Technologies, Inc. in China and other countries.
- Google Assistant is a trademark registered by Google LLC in China and other countries.
- Tuya is a trademark registered by Tuya Global Inc. in China and other countries.

Documents / Resources

<div><div>amaran</div><div><div>amaran SM5c Product Manual</div></div></div>	<div><div>amaran SM5c Smart Pixel Strip Light [pdf] User Manual</div><div>SM5c, Smart Pixel Strip Light, SM5c Smart Pixel Strip Light, Pixel Strip Light, Strip Light, Light</div></div>
<div><div>amaran</div><div><div>amaran SM5c Product Manual</div></div></div>	<div><div>amaran SM5c Smart Pixel Strip Light [pdf] User Manual</div><div>SM5c Smart Pixel Strip Light, SM5c, Smart Pixel Strip Light, Pixel Strip Light, Strip Light</div></div>
<div><div>amaran</div><div><div>amaran SM5c Product Manual</div></div></div>	<div><div>amaran SM5c Smart Pixel Strip Light [pdf] User Manual</div><div>SM5c, Smart Pixel Strip Light, Strip Light, Smart Pixel Light, Light, Pixel Light</div></div>