



AMADA AMFS13-W For Floating Tablets Instruction Manual

[Home](#) » [AMADA](#) » AMADA AMFS13-W For Floating Tablets Instruction Manual 

Contents

- [1 AMADA AMFS13-W For Floating Tablets](#)
- [2 Product Information](#)
- [3 Important Safety Information](#)
- [4 Product Usage Instructions](#)
- [5 Tools Needed](#)
- [6 Supplied Parts and Hardware](#)
- [7 INSTALLATION](#)
- [8 Documents / Resources](#)
 - [8.1 References](#)
- [9 Related Posts](#)



AMADA AMFS13-W For Floating Tablets



Product Information

Thank you for choosing this AMADA product! At AMADA, we strive to provide you with the best quality products and services in the industry. Should you have any issues, please don't hesitate to contact us at support@amadahome.com.

Important Safety Information

Tools Needed (NOT included):

- Stud Finder
- Level
- Pencil
- Philips Screwdriver
- Drill
- 5/64(2mm) Wood Drill Bit
- 1/4(6mm) Concrete Drill Bit
- Hammer

Supplied Parts and Hardware:

- Board (A) x1
- Board (B) x1
- Board (C) x1
- Long Lag Screw M4x50mm (D) x3
- Short Lag Screw M4x35mm (E) x6
- Wall Anchor 13x42mm (F) x6 (for drywall ONLY)
- Wall Anchor M6x30mm (G) x6 (for concrete or brick walls ONLY)

Product Usage Instructions

- **Step 1: Secure the Lag Screws to the Wall**

Before installation, please identify your wall type. For wood stud installation, follow step 1A. For drywall installation, follow step 1B. For solid concrete and concrete block walls installation, follow step 1C.

- **Step 1A: For Wood Stud**

For wood stud mounting, wall anchors [F] and [G] are NOT necessary.

[Needed for Wood Stud] Drill holes at a distance of 1 21/32(42mm) apart.

For Long Lag Screw (D), tighten them directly into the wood stud.

- **Step 1B: For Drywall**

Drill holes at a distance of 5/16(8mm) apart on the drywall.

Insert wall anchor [F] into each hole.

Tighten Short Lag Screw (E) into each wall anchor [F] until the head of the screw protrudes 5/16(8mm) from the wall.

- **Step 1C: For Solid Concrete and Concrete Block Walls**

Drill holes at a distance of 1 3/8(35mm) apart on the concrete or brick wall.

Insert wall anchor [G] into each hole.

Tighten Short Lag Screw (E) into each wall anchor [G] until the head of the screw protrudes 5/16(8mm) from the wall.

- **Step 2: Secure the Boards onto the Lag Screws**

Hang the board (A, B, or C) onto the two screws.

Pull down on the board to secure it in place.

Maximum weight capacity: 5KG (11LBS)

Repeat this step for each board.

Thank you again for choosing this AMADA product!

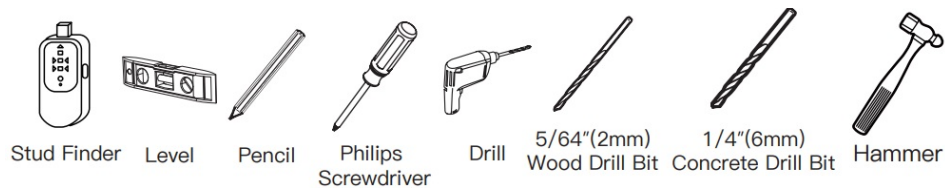
Merci d'avoir choisi ce produit AMADA! All of us at AMADA do appreciate your product purchase. We hope that you are as happy with your product as we are designing and manufacturing it for you. We strive to provide you with the best quality products and services in the industry. Should you have any issues, please don't hesitate to contact us at support@amadahome.com.

IMPORTANT SAFETY INFORMATION

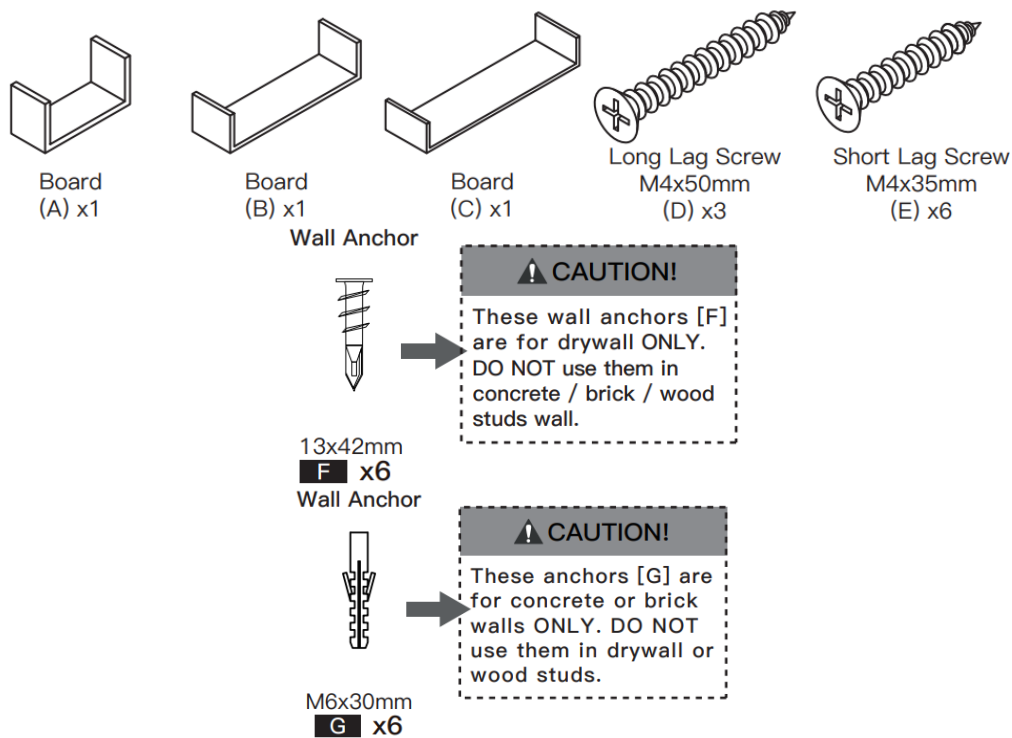
- Check package contents against supplied parts and hardware list to ensure that all components were received undamaged. DO NOT use damaged or defective parts. If you require replacement parts, please contact AMADA customer service at support@amadahome.com.
- Carefully read all instructions before attempting installation. If you DO NOT understand the instructions or have any concerns or questions, please contact customer service at support@amadahome.com.
- NOT all parts and hardware included will be used.
- DO NOT use this product for any purpose that is NOT specified in this manual. DO NOT exceed weight capacity. We cannot be liable for damage or injury caused by improper mounting, incorrect assembly or inappropriate use. Thank you for your understanding.

Tools Needed

(NOT included)



Supplied Parts and Hardware



INSTALLATION

1. Step 1 Secure the Lag Screws to the Wall

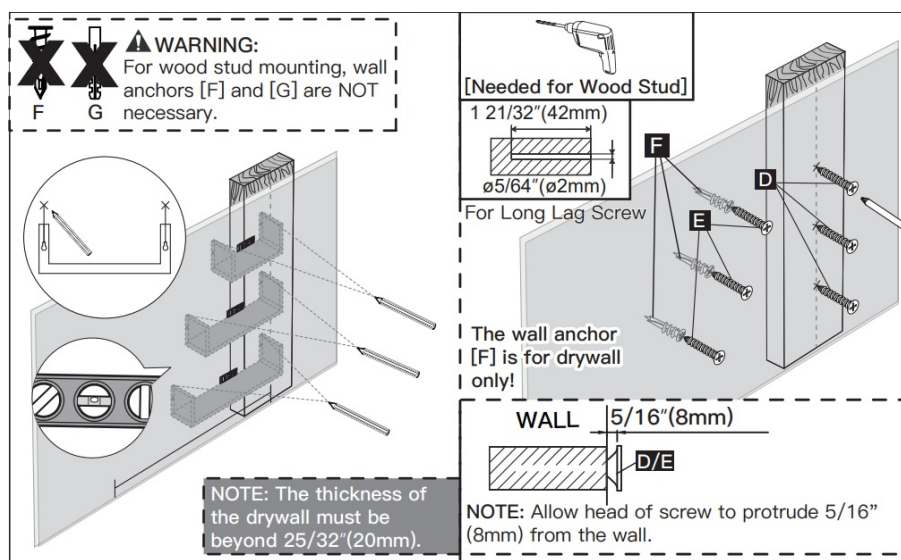
Before installation, please identify your wall type.

For wood stud installation, follow step 1A.

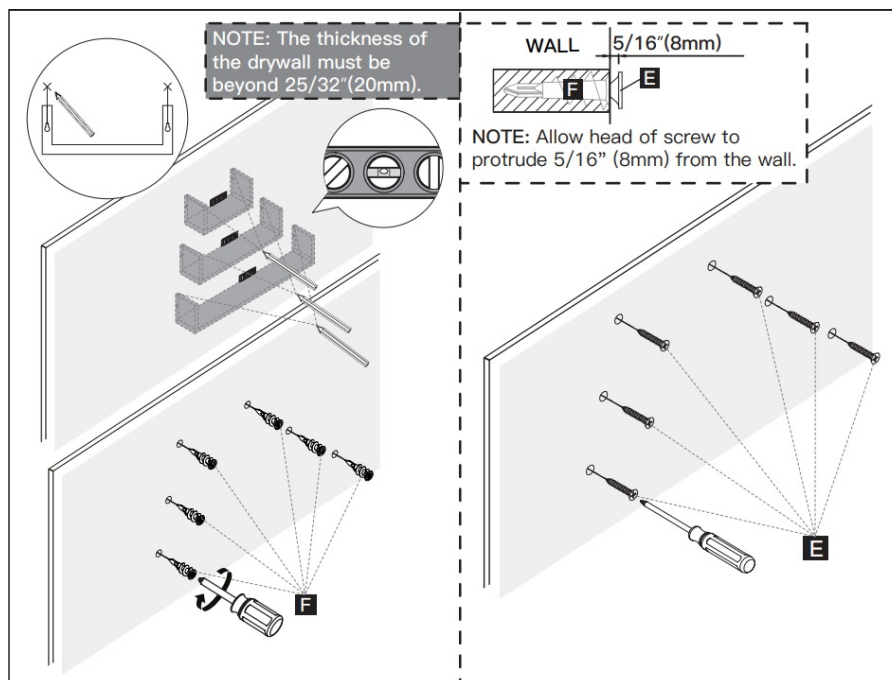
For drywall installation, follow step 1B.

For solid concrete and concrete block walls installation, follow step 1C.

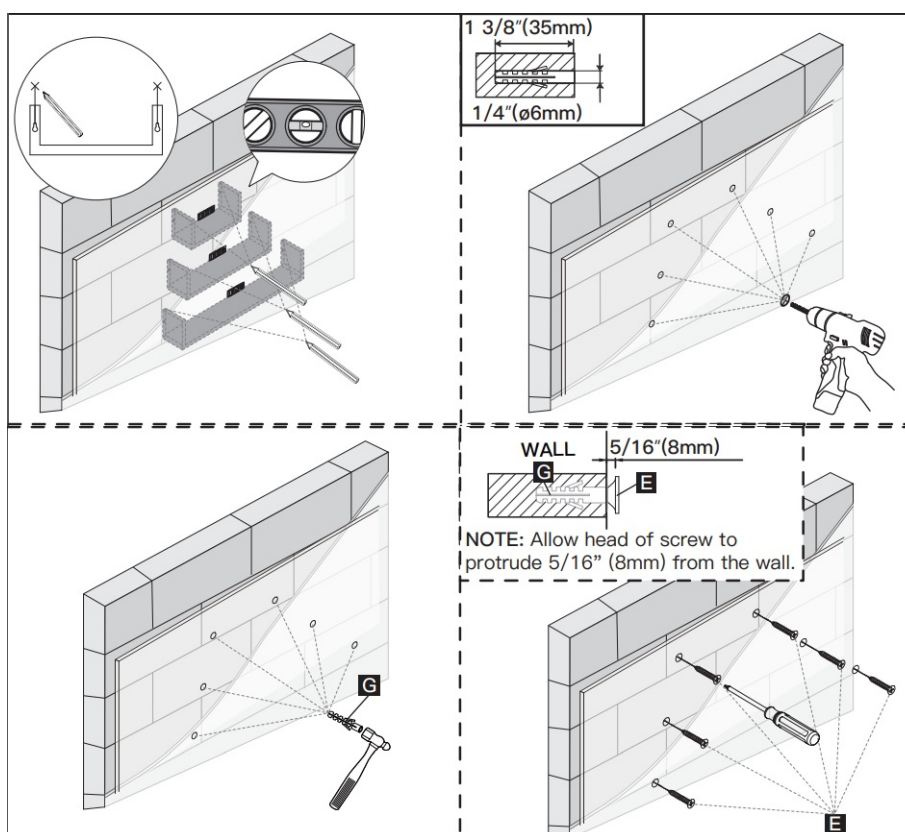
Step 1A For Wood Stud



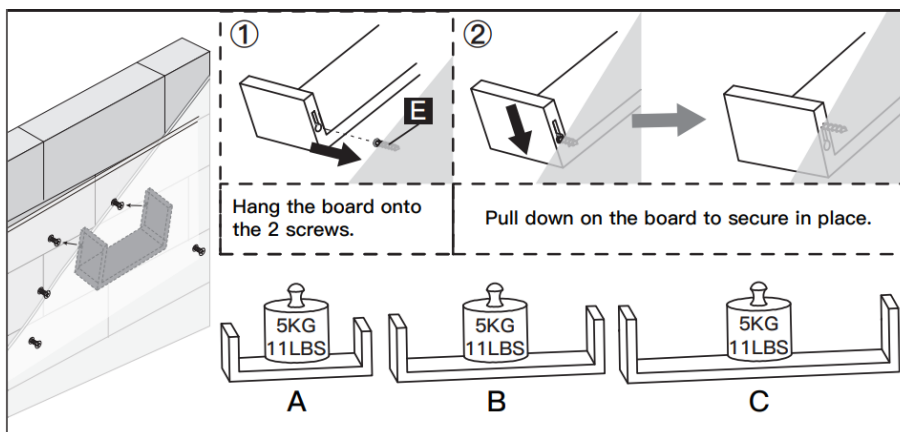
Step 1B For Drywall



Step 1C For Solid Concrete and Concrete Block Walls



2. Step 2 Secure the Boards onto the Lag Screws



Thank you again for choosing this AMADA product!

All of us at AMADA do appreciate your product purchase. We hope that you are as happy with your product as we are designing and manufacturing it for you. We strive to provide you with the best quality products and services in the industry. Should you have any issues, please don't hesitate to contact us at support@amadahome.com.

860-00199-00 Rev00

Documents / Resources

<p>AMADA Floating Shelf Instruction Manual Manuel d'instructions pour les tablettes flottantes</p> <p>Model Number: AMFS13-W For Floating Tablets AMFS13-W For Floating Tablets</p> <p>Weight: 5KG (11LBS)</p> <p>Part Number: 860-00199-00 Rev00</p> <p>For more information, please visit our website at www.amadahome.com or contact our customer support at support@amadahome.com.</p>	<p>AMADA AMFS13-W For Floating Tablets [pdf] Instruction Manual</p> <p>AMFS13-W For Floating Tablets, AMFS13-W, For Floating Tablets, Floating Tablets, Tablets</p>
--	---

References

- [User Manual](#)