

alza
WHS20S WIFI
Temperature
and Humidity
Sensor



alza WHS20S WIFI Temperature and Humidity Sensor User Manual

[Home](#) » [alza](#) » alza WHS20S WIFI Temperature and Humidity Sensor User Manual 

Contents

- 1 alza WHS20S WIFI Temperature and Humidity Sensor
- 2 Product Information
- 3 Product Usage Instructions
- 4 Specification
- 5 Product Description
- 6 Pair the Network
- 7 Display Brightness Adjustment
- 8 Clock Setting
- 9 DIY Learning Function
- 10 Warranty Conditions
- 11 EU Declaration of Conformity
- 12 Documents / Resources
 - 12.1 References
- 13 Related Posts



alza WHS20S WIFI Temperature and Humidity Sensor



Product Information

Specifications:

- **Model Number:** WHS20S
- **Input:** WIFI
- **Frequency:** 2.4G

Product Description:

WHS20S is an excellent humidity and temperature sensor with a screen and special value adjustment method. It features functions such as temperature & humidity calibration, brightness adjustment, alarm clock, stopwatch, and more for a smart home experience.

Product Usage Instructions

Pair the Network:

1. Turn off the sensor by pressing the on/off button.
2. Long press the on/off button for 5 seconds until the wifi icon on the screen fast flashes.
3. Turn on Bluetooth on your phone and open the smart life / Tuya SmartAPP.
4. Click on the + icon in the app, then press add when the product icon appears.
5. Input your 2.4G wifi network and password, then start pairing.
6. Once pairing is successful, you can start using the sensor.

Display Brightness Adjustment:

To adjust brightness, turn on the sensor and rotate the frame. Left to reduce brightness, right to increase

brightness.

Temperature and Humidity Calibration:

1. Short press the option key once to adjust temperature or twice to adjust humidity.
2. Rotate to increase or decrease the value.
3. Press the confirm button to confirm the adjustment.

Clock Setting:

1. Use the option key to adjust hour, minute, year, month, and day.
2. Rotate to set the desired value.
3. Press the confirm key to confirm the settings.

Alarm Clock Setting:

1. Use the option key to set up to two alarm clocks.
2. Rotate to adjust the alarm time and turn on/off the clock.

Countdown Timer & Stop Watch Setting:

1. To set a countdown timer, long press the confirmation key to enter Stop Watch function.
2. Use the option key to choose between hour, minute, and second.
3. Rotate to adjust the value and press confirm key to confirm.

Frequently Asked Questions (FAQ):

- **Q: How do I reset the sensor?**

A: To reset the sensor, press and hold the reset button for 10 seconds until the device restarts.

- **Q: Can I use rechargeable batteries with this sensor?**

A: Yes, you can use rechargeable batteries as long as they are compatible with the sensor's power requirements.

Dear customer,

Thank you for purchasing our product. Please read the following instructions carefully before first use and keep this user manual for future reference. Pay particular attention to the safety instructions. If you have any questions or comments about the device, please contact the customer line.

✉ www.alza.co.uk/kontakt

☎ +44 (0)203 514 4411

Importer Alza.cz a.s., Jankovcova 1522/53, Holešovice, 170 00 Prague 7, www.alza.cz

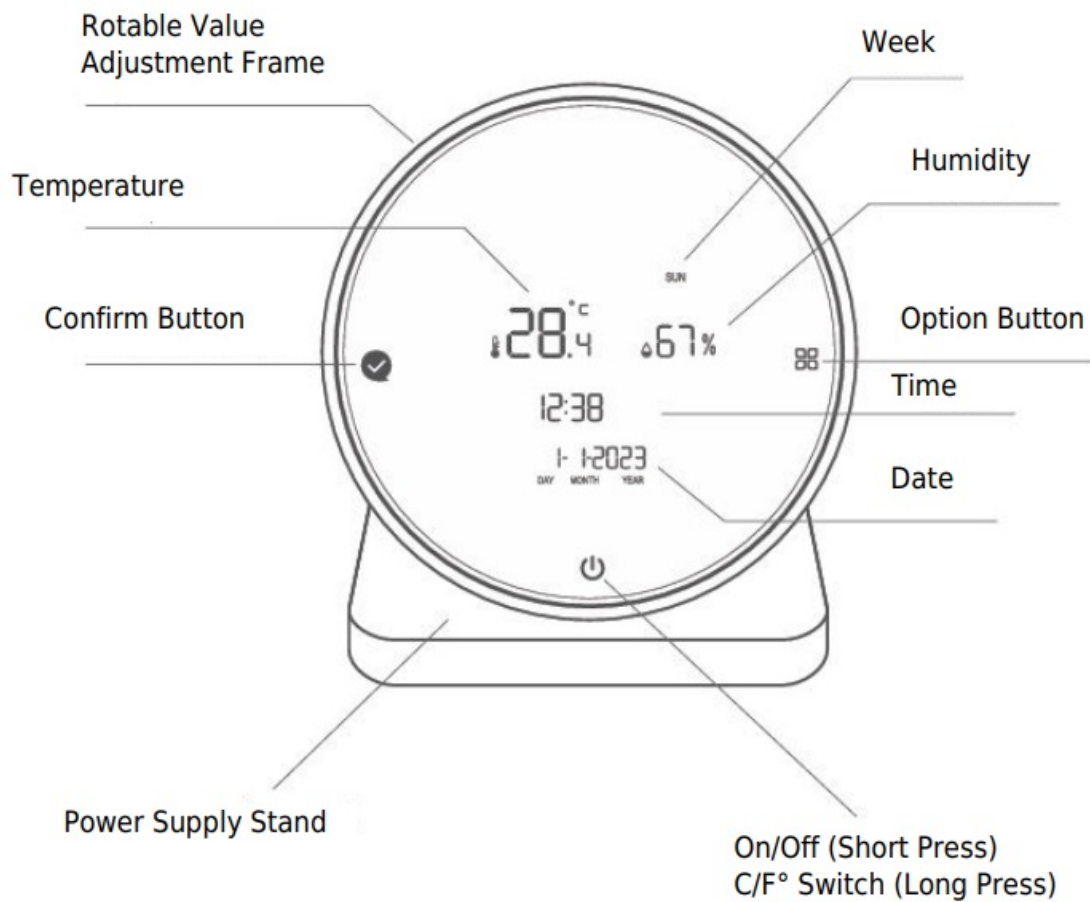
Specification

- **Mode Number** WHS20S
- **Input** 5V 1V
- **WIFI frequency** 2.4 GHz IEEE 802.11 b/g/n

- **Temperature Measure Range** 0°C ~ 60°C
- **Humidity Measure Range** 0% RH ~ 99% RH
- **Temperature Measure Accuracy** $\pm 1^{\circ}\text{C}$
- **Humidity Measure Accuracy** $\pm 5\%\text{RH}$
- **Dimensions** 80 x 86 x 105 mm
- **Net Weight** 130g

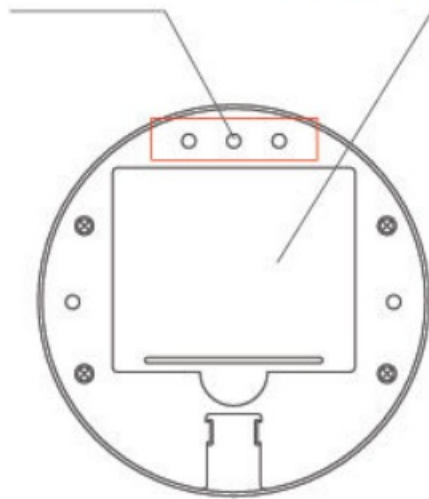
Product Description

WHS20S is not just an excellent humidity and temperature sensor with screen and special value adjustment method. It have also enabled many revolutionary function like temperature & humidity calibration function, brightness adjustable function, alarm clock function, stop watch function etc. All work together to serve for a wonderful smart home life.

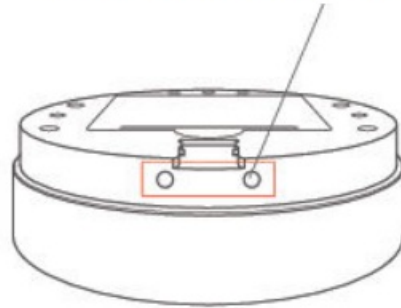


Sensor

Battery House Cover



Power Supply Contact Point

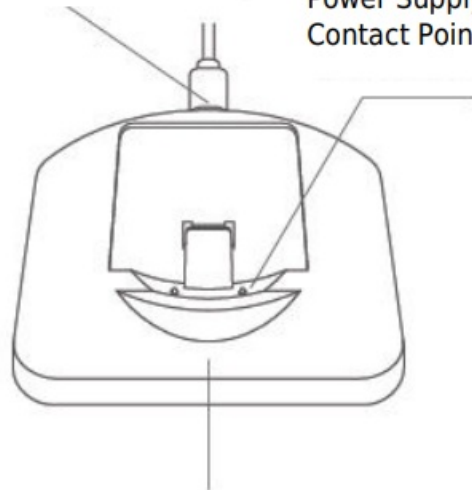


Type-C
Power Supply Cable Port



Rotable Value Adjustment Frame

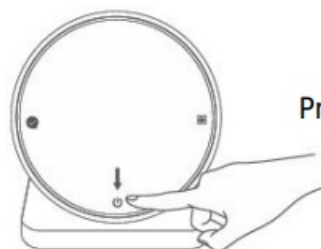
Power Supply
Contact Point



Power Supply Stand

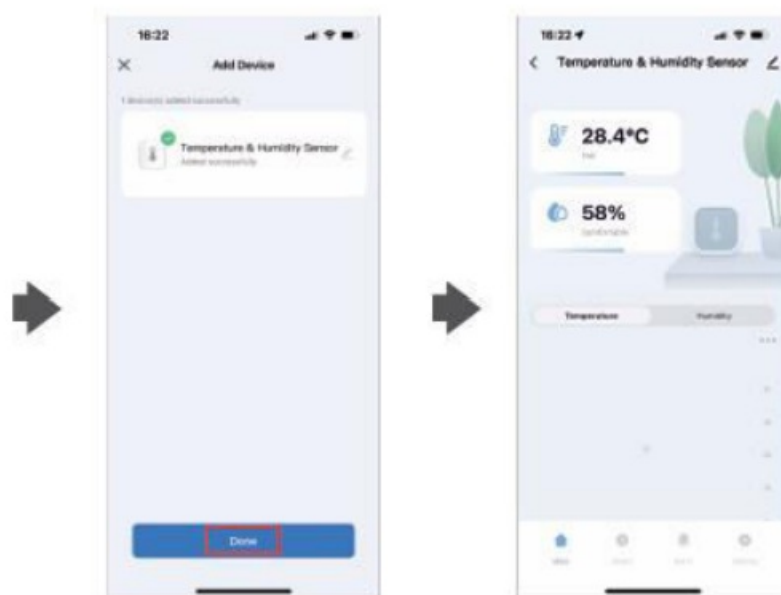
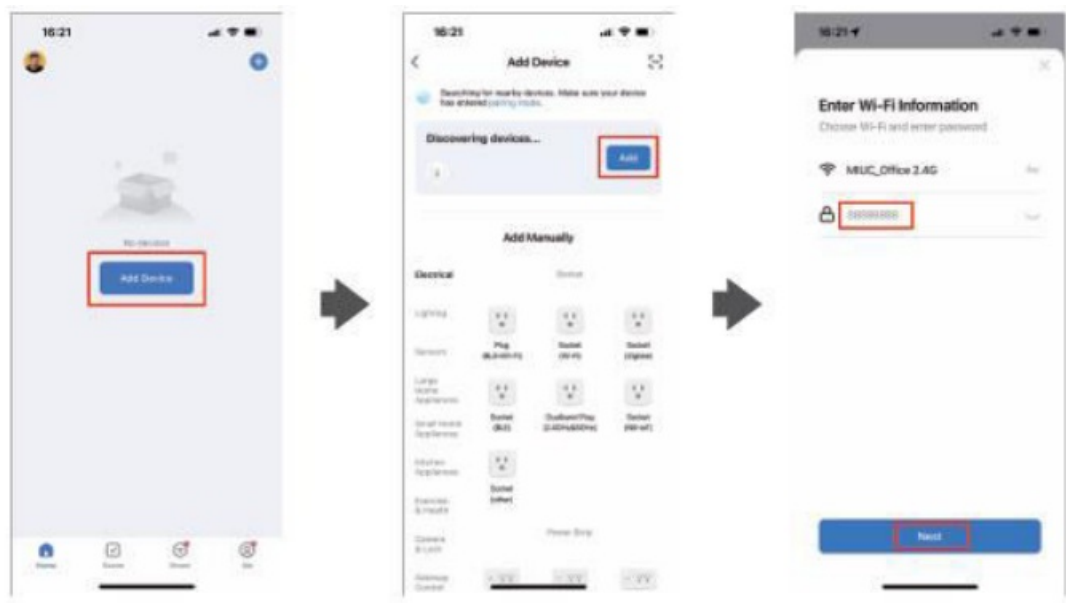
Pair the Network

1. Turn off the humidity and temperature sensor via press the on/off button.
2. Long press the on/off button for 5 seconds till the wifi icon on the screen fast flash.



Press the button for 5s

3. Turn on Bluetooth of phone, and open smart life / Tuya SmartAPP on your phone.
4. Click + icon on the right up corner of the app main interface.
5. Product icon will jump out, press add.
6. Input 2.4G wifi network and password, start paring.
7. Paring successfully and start your smart life.



Display Brightness Adjustment

Turn on and rotate the frame.

Left:
reduce the brightness

Right:
increase the brightness



Temperature and Humidity Calibration

1. Short press the option key 1 time to adjust the temperature value.
2. Short press the option key 2 time to adjust the humidity value.
3. Rotate the increase or decrease the value.
4. Short press the confirm button to make confirmation.



Temperature Adjustment Accuracy: 0.1°C



Humidity Adjustment Accuracy: 1%RH

Clock Setting

1. Short press the option key 3 time to adjust the hour.
2. Short press the option key 4 time to adjust minute.
3. Short press the option key 5 time to adjust year.
4. Short press the option key 6 time to adjust month.
5. Short press the option key 7 time to adjust day.
6. Rotate to adjust the value.
7. Short press confirm key to make confirmation.

Alarm Clock Setting

1. Short press the option key 8 time to setting alarm clock.

2. Rotate to adjust time of alarm and turn on/off clock. (In total 2 clock for option)

Countdown Timer Setting

1. Long press confirmation key gets into Stop Watch function. Short press option key to choose between hour, minute and second.
2. Rotate to adjust the value.
3. Short press confirm key to confirmation.
4. After alarm time reached, device will release voice of beep.

Stop Watch Setting

1. Long press option button key gets into stop watch function.
2. Short press confirm key to start the timer.
3. Short press confirm key to stop the timer.

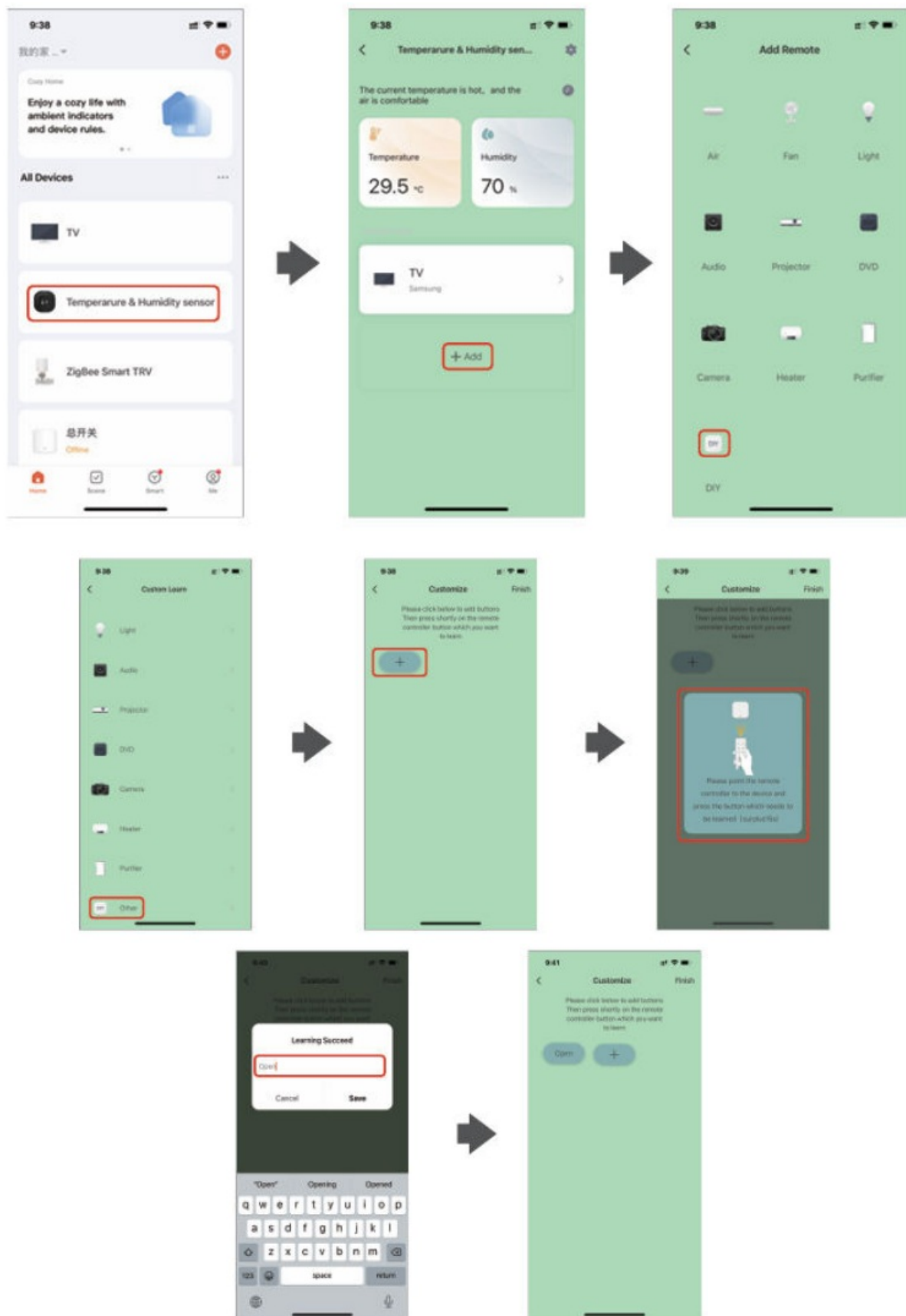
IR Remote Setting

1. Tap "Temperature & Humidity Sensor", then click "+", elect the device and its brand you need control.
2. You can click "Quick Match" or "Manual Mode" to match the buttons, please match at least 3 buttons to check if the device reacts properly, if yes, then match completed, you can control the device.
3. If you added the same device type with the same brand in one room, please edit the device with different names to avoid control confusion.



DIY Learning Function

1. If you can not find the brand of the device in the brand list, you can choose "DIY" to learn the buttons of other brands, remote control, so you can also control the device.



Notes:

1. It only support 38KHz frequency, if the IR remote unable to receive commands from the IR device, it is likely that the frequency of IR device does not match, unable to study commands.
2. DIY does not support voice control.

App Download

1. Scan the QR code to download Tuya Smart APP / Smart Life App, or you can also search keyword “Tuya Smart” and “Smart Life” at App iOS APP / Android APP Store or Google play to download App.



Scan to download
Tuya Smart APP / Smart Life App

Warranty Conditions

A new product purchased in the Alza.cz sales network is guaranteed for 2 years. If you need repair or other services during the warranty period, contact the product seller directly, you must provide the original proof of purchase with the date of purchase.

The following are considered to be a conflict with the warranty conditions, for which the claimed claim may not be recognized:

- Using the product for any purpose other than that for which the product is intended or failing to follow the instructions for maintenance, operation, and service of the product.
- Damage to the product by a natural disaster, the intervention of an unauthorized person or mechanically through the fault of the buyer (e.g., during transport, cleaning by inappropriate means, etc.).
- Natural wear and aging of consumables or components during use (such as batteries, etc.).
- Exposure to adverse external influences, such as sunlight and other radiation or electromagnetic fields, fluid intrusion, object intrusion, mains overvoltage, electrostatic discharge voltage (including lightning), faulty supply or input voltage and inappropriate polarity of this voltage, chemical processes such as used power supplies, etc.
- If anyone has made modifications, modifications, alterations to the design or adaptation to change or extend the functions of the product compared to the purchased design or use of non-original components.

EU Declaration of Conformity


This equipment is in compliance with the essential requirements and other relevant provisions of EU directives.








WEEE

This product must not be disposed of as normal household waste in accordance with the EU Directive on Waste Electrical and Electronic Equipment (WEEE – 2012/19 / EU). Instead, it shall be returned to the place of purchase or handed over to a public collection point for the recyclable waste. By ensuring this product is disposed of correctly, you will help prevent potential negative consequences for the environment and human health, which could otherwise be caused by inappropriate waste handling of this product. Contact your local authority or the nearest collection point for further details. Improper disposal of this type of waste may result in fines in accordance with national regulations.

Documents / Resources

 WIFI Temperature & Humidity Sensor User Manual • 100-wireless-sensor • temperature sensor • humidity sensor • Bluetooth	alza WHS20S WIFI Temperature and Humidity Sensor [pdf] User Manual WHS20S, WHS20S WIFI Temperature and Humidity Sensor, WIFI Temperature and Humidity Sensor, Temperature and Humidity Sensor, Humidity Sensor, Sensor
---	---

References

-  [Alza.cz – rychlý a pohodlný nákup odkudkoliv | Alza.cz](#)
-  [Alza | Alza.co.uk](#)
-  [Alza.cz – rychlý a pohodlný nákup odkudkoliv | Alza.cz](#)
-  [alza.de](#)
-  [alza.hu](#)
- [User Manual](#)

Manuals+, Privacy Policy

This website is an independent publication and is neither affiliated with nor endorsed by any of the trademark owners. The "Bluetooth®" word mark and logos are registered trademarks owned by Bluetooth SIG, Inc. The "Wi-Fi®" word mark and logos are registered trademarks owned by the Wi-Fi Alliance. Any use of these marks on this website does not imply any affiliation with or endorsement.