



alza MS-105 WiFi Dimmer Module User Manual

[Home](#) » [alza](#) » alza MS-105 WiFi Dimmer Module User Manual 

Contents

- [1 alza MS-105 WiFi Dimmer Module](#)
- [2 Dear customer](#)
- [3 Installation](#)
- [4 Technical Specifications](#)
- [5 Wiring Instructions and Diagrams](#)
- [6 FAQ](#)
- [7 App user manual](#)
- [8 Warranty Conditions](#)
- [9 Documents / Resources](#)
- [10 Related Posts](#)



alza MS-105 WiFi Dimmer Module



Dear customer

Thank you for purchasing our product. Please read the following instructions carefully before first use and keep this user manual for future reference. Pay particular attention to the safety instructions. If you have any questions or comments about the device, please contact the customer line.

www.alza.co.uk/kontakt

+44 (0)203 514 4411

Importer Alza.cz a.s., Jankovcova 1522/53, Holešovice, 170 00 Praha 7, www.alza.cz

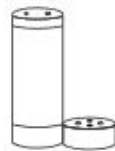
Global international controls. Whenever & Wherever you are. All-in-one mobile App.



Schedule timer



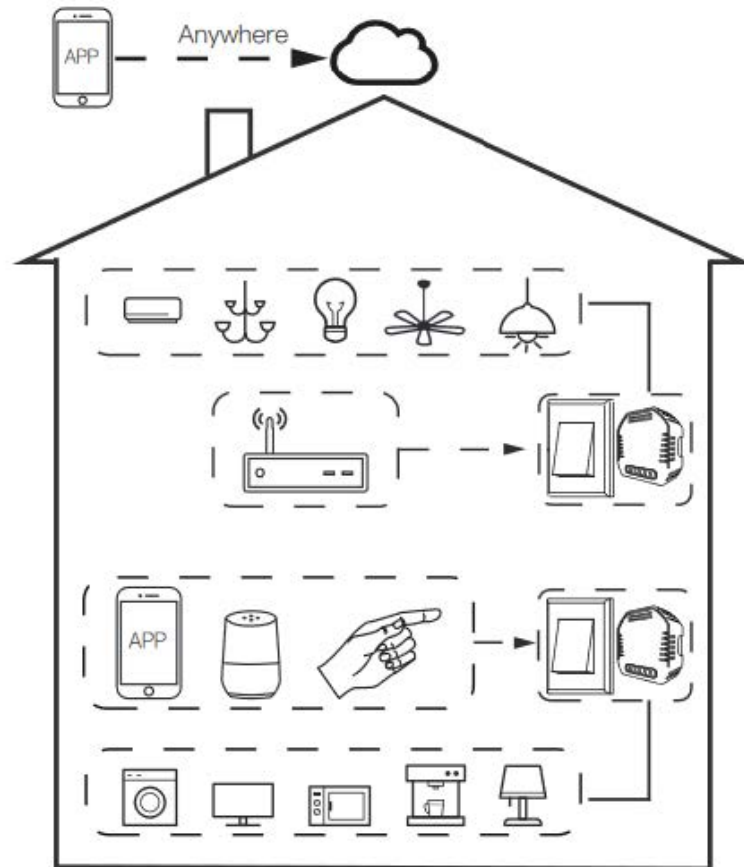
Voice control-work with Google Home



Voice control-work with Amazon Alexa



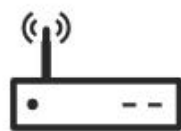
Device Sharing



Inhouse local operation



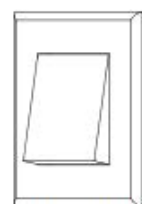
App



Router

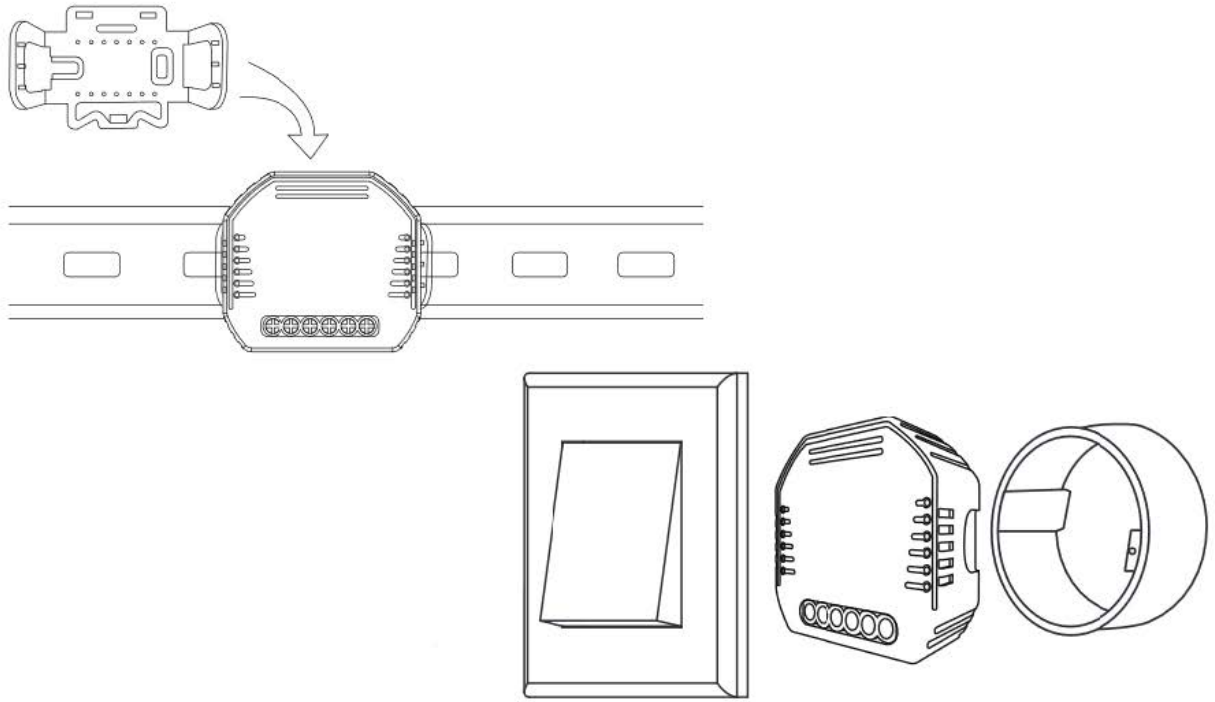


Voice control



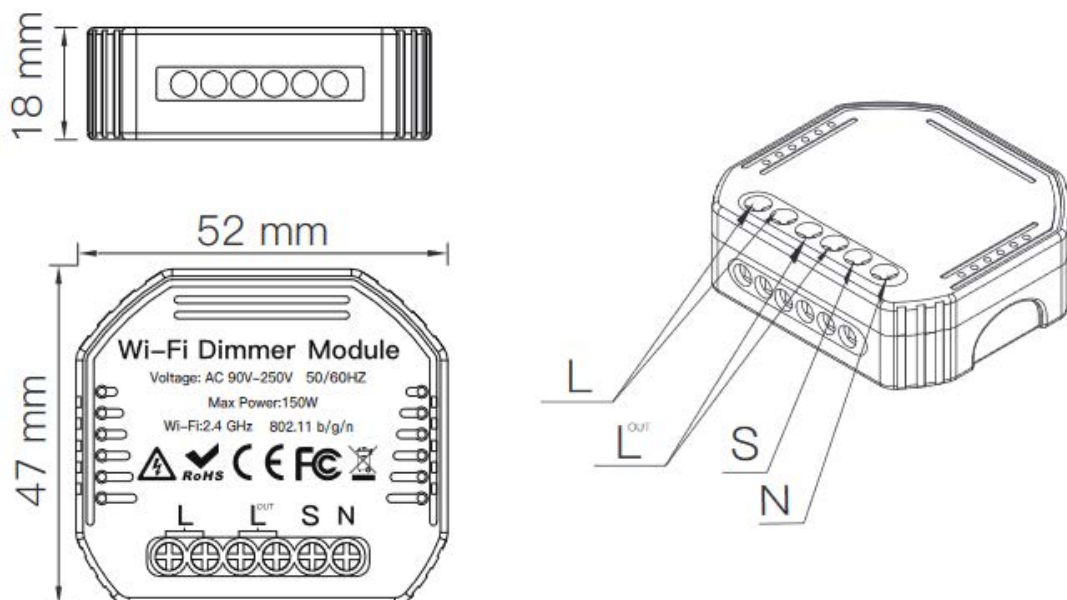
Push switches

Reset switch



Installation

- Installation must be carried out by a qualified electrician in accordance with local regulations.
- Keep the device out of the reach of children.
- Keep the device away from water, damp, or hot environments.
- Install the device away from strong signal sources such as microwave oven that may cause signal interruption resulting in abnormal operating of the device.
- Obstruction by a concrete wall or metallic materials may reduce the effective operating range of the device and should be avoided.
- Do NOT attempt to disassemble, repair or modify the device.

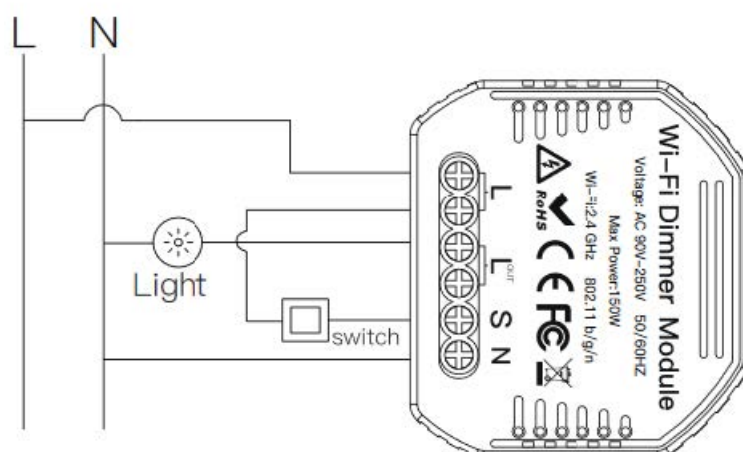


Technical Specifications

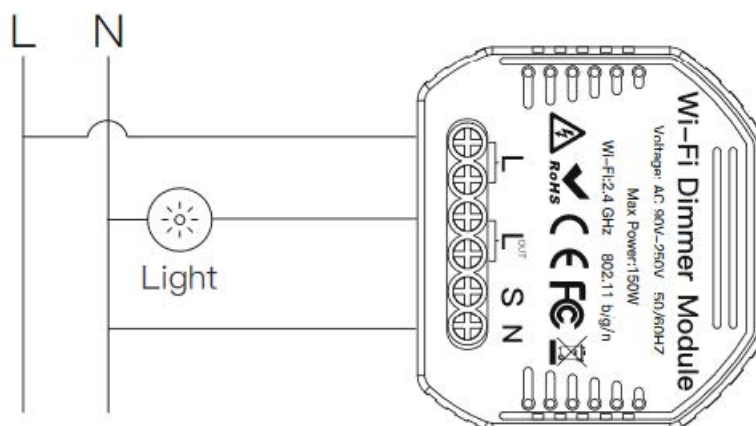
Product type	Wi-Fi Dimmer Module
Voltage	90-250 V AC
Max Power	150 W
Wi-Fi frequency	2.4 GHz Wi-Fi
Operation temp.	-10 °C – +40 °C
Case temp.	Tc: +80 °C (Max.)
Operation range	≤ 200 m
Dims (W×D×H)	52×47×18 mm
IP rating	IP20

Wiring Diagram

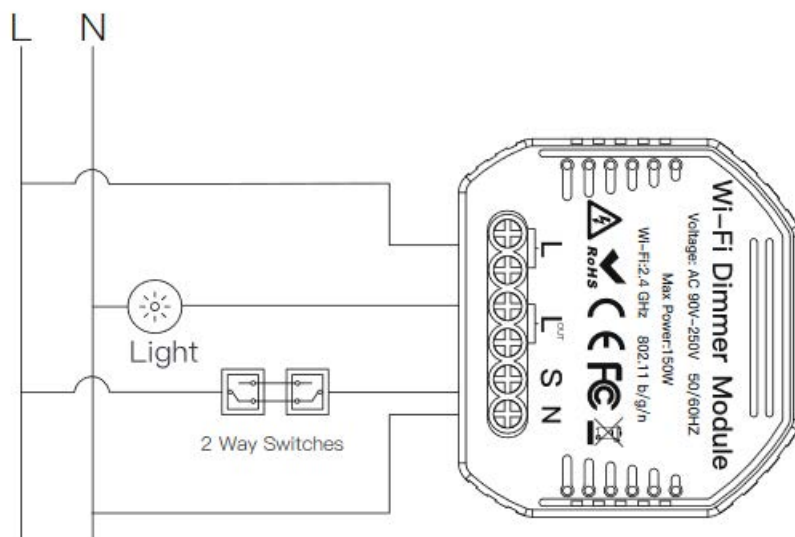
1. With one switch



2. Without switch



3. With 2 Way switches



Wiring Instructions and Diagrams

1. Turn off the power supply before carrying out any electrical installation work.
2. Connect wires according to the wiring diagram.
3. Insert the module into the junction box.
4. Connect the power supply and follow switch module configuration instructions.

Notes: Put your smartphone close to the switch module when you are configuring it and make sure you have min. 50 % Wi-Fi signal.

FAQ

Q1: What should I do if I cannot configure the switch module?

- Please check whether device is powered on.
- Make sure your mobile and switch module are under the same 2.4 GHz Wi-Fi network.
- Whether it is in good internet conditions.
- Make sure the password entered in App is correct.

Q2: What device can be connected to this Wi-Fi switch module?

Most of your household electrical appliances can be, such as lamps, laundry machine, coffee maker, etc.

Q3: What happens if the Wi-Fi goes off?

You can still control the device connected to the switch module with your traditional switch and once the Wi-Fi is active again the device will automatically connect to it.

Q4: What should I do if I change the Wi-Fi network or change the password?

You must re-connect our Wi-Fi switch module to the new Wi-Fi network according to the App User Manual.

Q5: How do I reset the device?

Power on/off device 10 times until the beeper on the module sounds continuously.

Manual Override

The switch module terminal reserves the access of manual override function for the end-user to switch on/off. Switch on/off for permanent on/off function.

Notes:

1. Both the adjustment on App and switch can be reset, the last adjustment remains in memory.

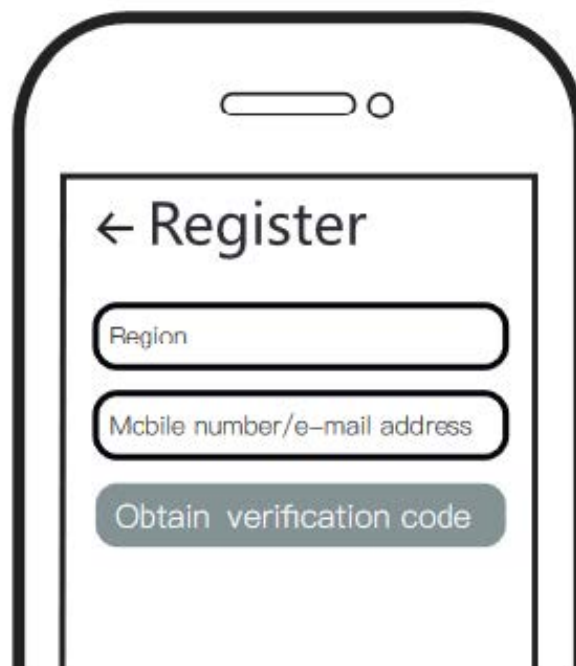
2. The App control is synchronized with the manual switch.

App user manual



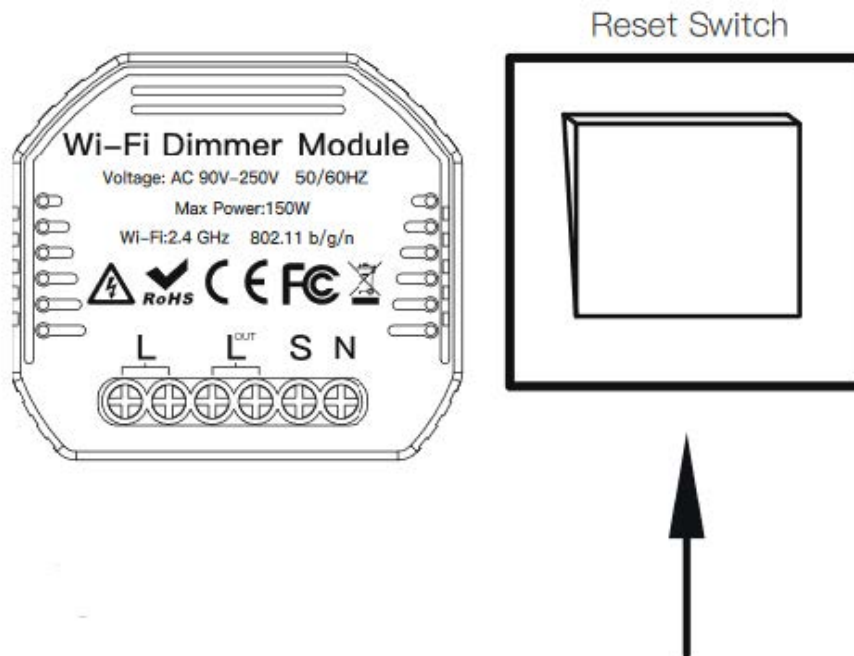
iOS / Android App

- Scan the QR code to download Smart Life App. You can also search for keyword “Smart Life” on AppStore or Google Play to download the App.
- Log in or register your account with your mobile number or e-mail address. Type in the verification code sent to your mobile phone or e-mail, then set your login password. Click “Create Family” to enter the app.

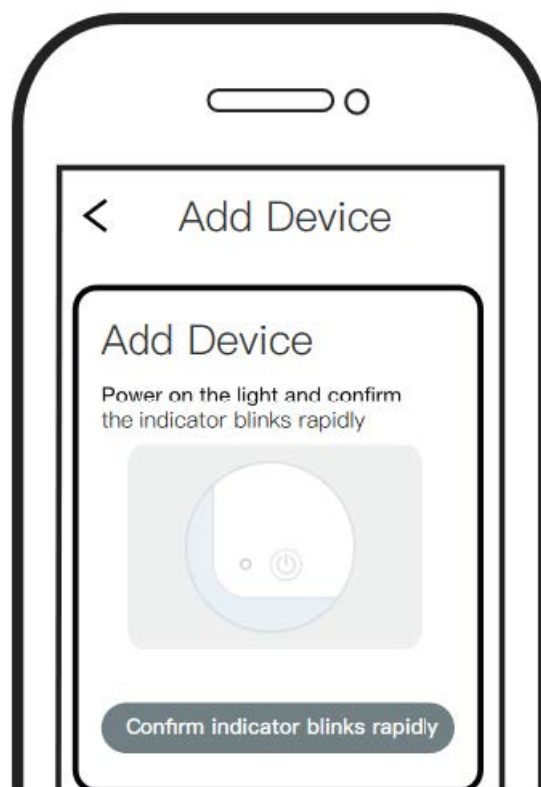


- Note: This smart switch module can only be used with reset switch.

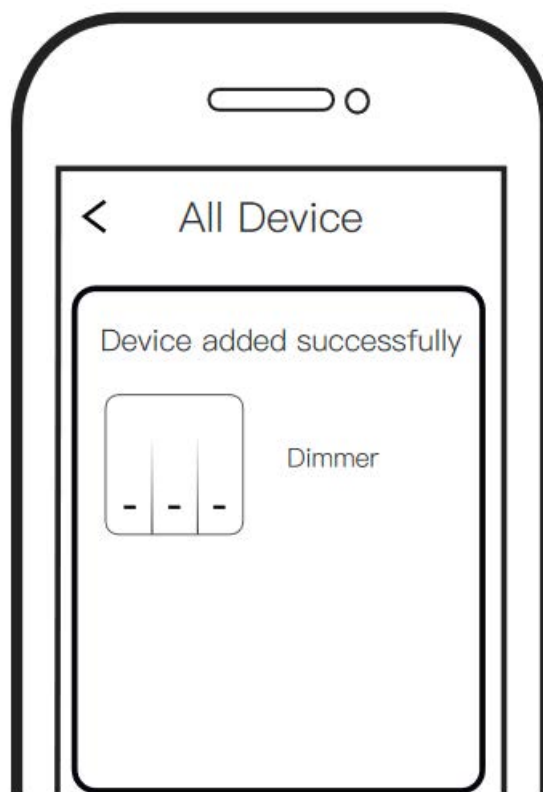
After the wiring of switch module is done, press the return button switch 10 times (keep time interval not too short) until the beep sounds continuously and rapidly as Di-Di-Di... for pairing mode.



- Open the App, select “+” on the top right, and choose “Switch (Wi-Fi)” to add a device.
- Make sure your smartphone and Wi-Fi switch module is under the same Wi-Fi network at 2.4 GHz frequency. Confirm when the light blinks rapidly (twice a second).



- The connection will take about 10-120 seconds to complete depending on your network condition.
- When pairing is done, the Dimmer will be shown in the App, and you will be able to change the device name to your own taste.



- Connect to Amazon Alexa or Google Assistant for voice control, or to share the device with your family and friends.
- Enjoy your smart life of home automation for control of the lights by using our All-in-one mobile App wherever you are or simply for comfortable voice control.

Warranty Conditions

A new product purchased in the Alza.cz sales network is guaranteed for 2 years. If you need repair or other services during the warranty period, contact the product seller directly, you must provide the original proof of purchase with the date of purchase. The following are considered to be a conflict with the warranty conditions, for which the claimed claim may not be recognized.

- Using the product for any purpose other than that for which the product is intended or failing to follow the instructions for maintenance, operation and service of the product.
- Damage to the product by a natural disaster, the intervention of an unauthorized person or mechanically through the fault of the buyer (e.g. during transport, cleaning by inappropriate means, etc.).
- Natural wear and aging of consumables or components during use (such as batteries, etc.).
- Exposure to adverse external influences, such as sunlight and other radiation or electromagnetic fields, fluid intrusion, object intrusion, mains overvoltage, electrostatic discharge voltage (including lightning), faulty supply or input voltage and inappropriate polarity of this voltage, chemical processes such as used power supplies, etc.
- If anyone has made modifications, modifications, alterations to the design or adaptation to change or extend the functions of the product compared to the purchased design or use of non-original components.

EU Declaration of Conformity

Identification data of the manufacturer's / importer's authorized representative:

Importer: Alza.cz a.s.

Registered office: Jankovcova 1522/53, Holešovice, 170 00 Prague 7 ICO: 27082440

Subject of the declaration:

Title: Wi-Fi switch. Model / Type: MS-105

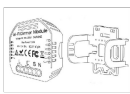
The above product has been tested in accordance with the standard(s) used to demonstrate compliance with the essential requirements laid down in the Directive(s):

Directive No. 2014/53/EU. Directive No. 2011/65/EU as amended 2015/863/EU. Prague, 27.8.2020

WEEE

This product must not be disposed of as normal household waste in accordance with the EU Directive on Waste Electrical and Electronic Equipment (WEEE – 2012/19 / EU). Instead, it shall be returned to the place of purchase or handed over to a public collection point for the recyclable waste. By ensuring this product is disposed of correctly, you will help prevent potential negative consequences for the environment and human health, which could otherwise be caused by inappropriate waste handling of this product. Contact your local authority or the nearest collection point for further details. Improper disposal of this type of waste may result in fines in accordance with national regulations.

Documents / Resources

 <p>MS-105 User Manual - Uživatelský manuál</p>	<p>alza MS-105 WiFi Dimmer Module [pdf] User Manual MS-105, WiFi Dimmer Module, MS-105 WiFi Dimmer Module, Dimmer Module</p>
--	--