



alvasys automation JACE8000 Danfoss LON Device Installation Guide

[Home](#) » [alvasys automation](#) » alvasys automation JACE8000 Danfoss LON Device Installation Guide 



Danfoss LON device installation
version 1.0.1

Last modification: 23.8.2022 M.Meriano module for N4.7+N4.8+N4.9+N4.10+

Contents

- [1 Introduction](#)
- [2 Prerequisites](#)
- [3 Preparation](#)
- [4 Installation](#)
- [5 Documents / Resources](#)
 - [5.1 References](#)
- [6 Related Posts](#)

Introduction

This guide contains the installation instructions for the Danfoss LON driver of always automation ag. Readers should be familiar with the following concepts to fully understand the background of the activities described below.

- Administration of the Niagara platform.
- Administration of a LON network.

Prerequisites

The following modules have to be installed on the JACE before adding a Danfoss LON device:

- LonWorks by Tridium
- sstarLonDanfoss by Silver Star Engineering

For a successful installation, you also need a valid license file that contains the feature

Preparation

The installation does not need specific preparation but please make sure to have a recent backup of the station.

Installation

4.1. Adding a Lon network and the device

From palettes choose LonWorks, then drag LonNetwork to Station/Drivers. This step will create a Lon network. Choose the network just added, and the Lon Device Manager view appears. Execute the “Discovery” action and drag down the device you wish to install. Select “EKC” for the device type, and leave all other parameters unchanged.

Now the device appears in the lower panel.

4.2. Creating proxy points

In the row of the device double click on the icon in the Exts column, and the Lon Point Manager view appears. Execute the “Discovery” action, then select all the points displayed in the upper table. Execute the “Add” action.

4.3. Binding proxy points

Select the Lon network in the Navigator panel and open the Lon Link Manager view. Execute the Bind action.

4.4. Adding the Danfoss LON extension

Open the palette sstarLonDanfoss.

Drag the LonDanfossPointDeviceExt extension to the EKC device.

Select the extension just added, and execute the “Discovery” action.

From the upper table drag down all the parameters you want to monitor.

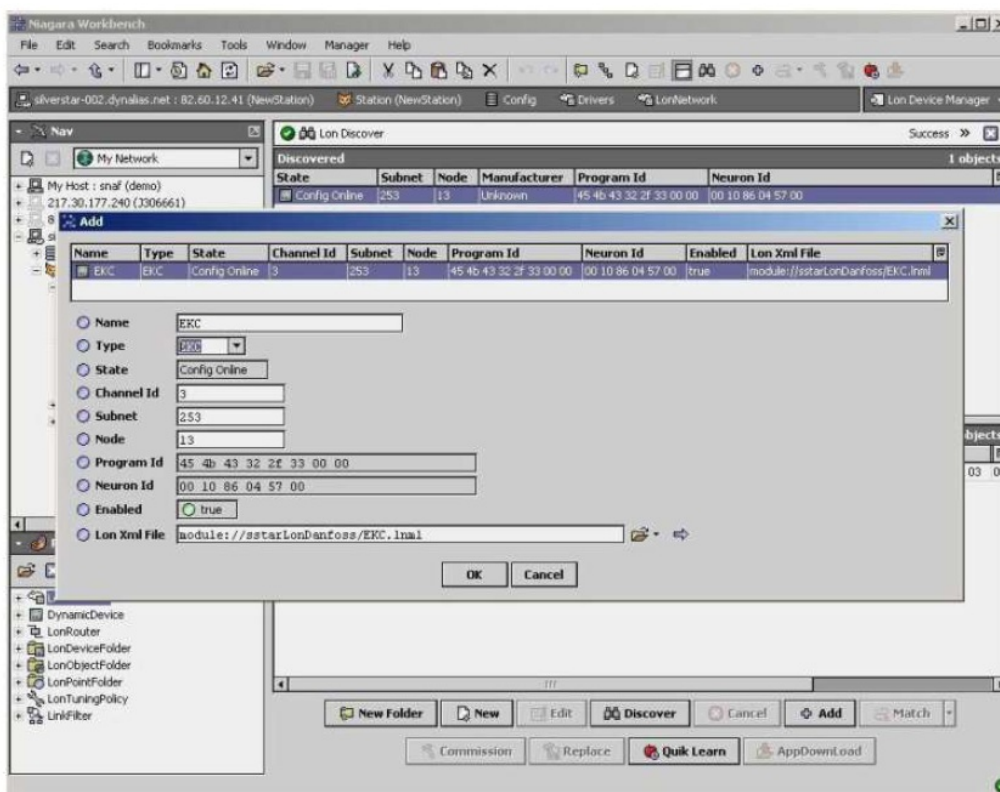


figure 1: Adding EKC device

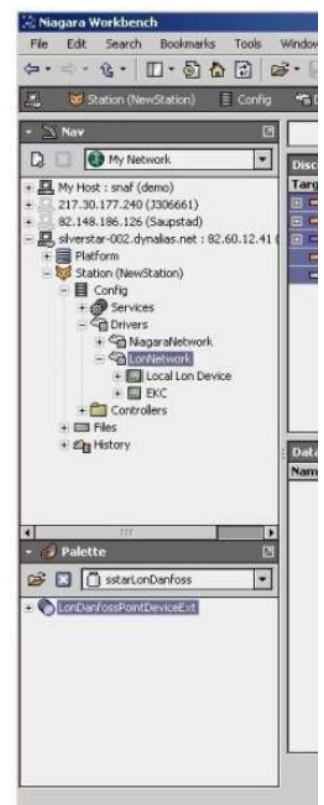


figure 2: Creating proxy points

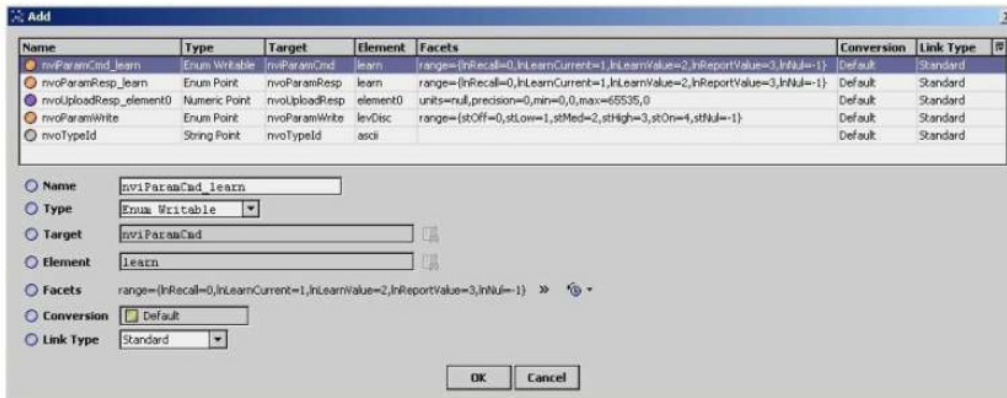


figure 3: Add proxy points dialog

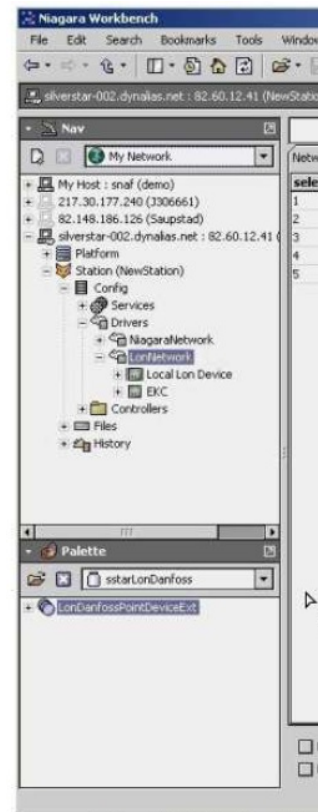


figure 5: Lon links after binding

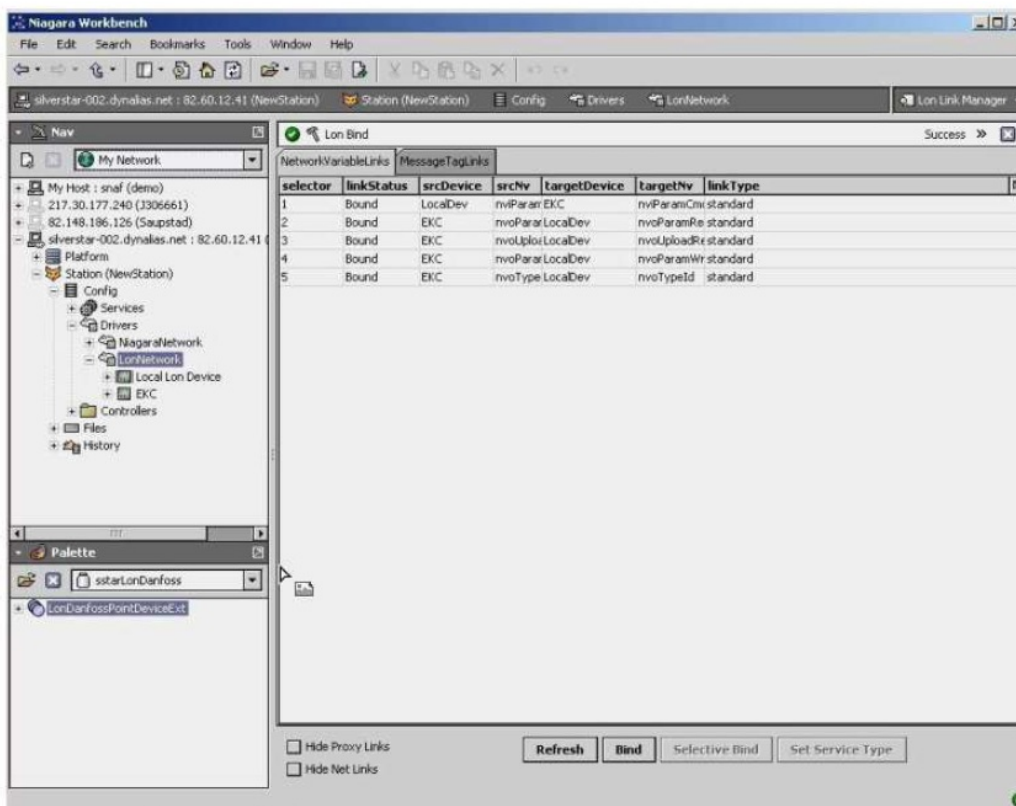


figure 6: Result of discovery for an EKC201

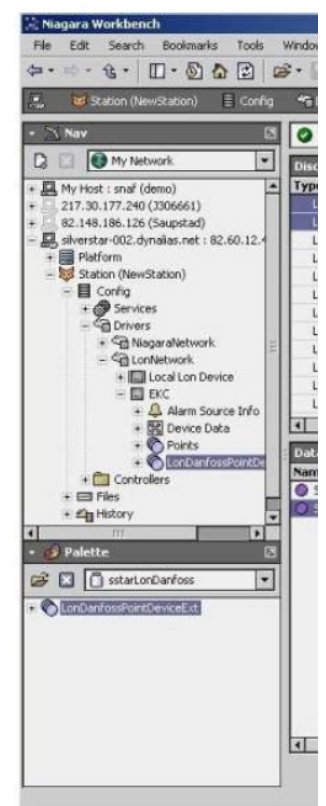



figure 7: Points added to the device

Documents / Resources

	<p>alvasys automation JACE8000 Danfoss LON Device [pdf] Installation Guide JACE8000, Danfoss LON Device, JACE8000 Danfoss LON Device</p>
---	--

References

- [Startseite | alvasys automation ag](#)
- [Startseite | alvasys automation ag](#)