



Altronix ALT-NETWAY1DWPH NETWAY1DWPH PoE Injector Installation Guide

[Home](#) » [Altronix](#) » Altronix ALT-NETWAY1DWPH NETWAY1DWPH PoE Injector Installation Guide 

Contents

- [1 Altronix ALT-NETWAY1DWPH NETWAY1DWPH PoE Injector](#)
- [2 Overview](#)
- [3 Features](#)
- [4 Installation Instructions](#)
- [5 Technical Specifications](#)
- [6 Typical Applications](#)
- [7 Wall Mount Installation](#)
- [8 Pole Mounting Using Optional Pole Mount Kit PMK1 \(not included\)](#)
- [9 Mechanical Drawing and Dimensions \(H x W x D approx.\)](#)
- [10 Documents / Resources](#)
 - [10.1 References](#)
- [11 Related Posts](#)



Altronix ALT-NETWAY1DWPH NETWAY1DWPH PoE Injector



Overview

Altronix NetWay1DWP Outdoor Single Port Midspan Injector provides Hi-PoE (60W) power and passes data for PoE-compliant cameras/edge devices. Cameras/edge devices may be located up to 100m from the unit.

Features

Agency Listings:

- UL 60950-1 Information Technology
- UL 60950-22 Information Technology Equipment to be installed Outdoors.
- CE European Conformity.

Input:

- 115VAC, 60Hz, 2A or 230VAC, 50/60Hz, 0.75A.

Power Output:

- Maximum power: Hi-PoE (60W) power product using all 4 pairs for 60W.
- IEEE 3at (30W) and IEEE 802.3af (15W) compliant.
- Integral surge protection.

Ethernet:

- Connectivity: RJ45, auto-crossover.

- Wire type: 4-pair Cat-5 or better-structured cable.
- Distance: up to 100m.
- Speed: 10/100/1000Mbps, half/full duplex, auto negotiation.

LEDs:

LED1: PoE active. LED2: AC Power present.

Environmental:

- Operating Temperature:
 - 30W: – 30°C to 70°C (– 22°F to 158°F).
 - 60W: – 30°C to 55°C (– 22°F to 131°F).

Storage Temperature:

- 30°C to 85°C (– 22°F to 185°F).
- Humidity: 20 to 85%, non-condensing.

Applications:

Provides PoE/PoE+ and Hi-PoE for cameras/devices.

Mechanical:

- NEMA 4X, IP66 Rated enclosure for outdoor use.
- Dimensions (H x W x D approx.): 9.5" x 7.32" x 4.92" (241.3mm x 185.9mm x 125mm).

Models:

- NetWay1DWP: Outdoor Single Port Hi-PoE Injector.
- NetWay1DWPH: Outdoor Single Port Hi-PoE Injector, enclosure with three (3) 5/8" wiring inlets, includes NEMA-rated glands.

Installation Instructions

Wiring methods shall be in accordance with the National Electrical Code/NFPA 70/ANSI, and with all local codes and authorities having jurisdiction. Wiring should be UL Listed and/or Recognized wire suitable for the application.

1. Remove the circuit board from the enclosure prior to drilling NetWay1DWP (do not discard hardware).

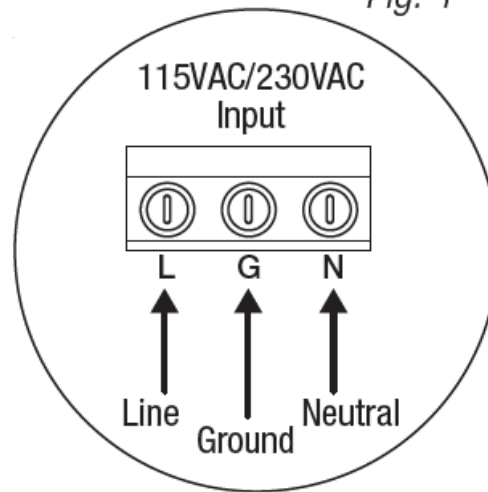
Note: Take care to assure that hardware will not interfere with components of the circuit board.

2. NetWay1DWP: Mark and drill desired inlets on the enclosure to facilitate wiring (Fig. 2, pg. 4). Maximum UL Listed NEMA type 4X rated fittings to be used is 1/2", follow manufacturer's specifications for the appropriate size opening.

Note: Inlets for conduit fittings should only be made on the bottom of the enclosure. UL Listed NEMA type 4X rated conduit connector/hubs shall be used for the appropriate size inlets. NetWay1DWPH is pre-drilled with three (3) pre-drilled inlet holes for wiring.

3. Clean out the inside of the enclosure before remounting the circuit board.
4. Switch the circuit breaker to the OFF position.
5. Connect AC power from a UL-approved circuit breaker to the terminals marked [L] and [N], connect the ground to the terminal marked [G] (refer to Fig. 1 on right).

Fig. 1



6. Mounting NEMA 4X rated enclosure:

Wall mount: Mount unit in the desired location. Mark and drill holes to line up with the top and bottom holes of the enclosure flange. Secure enclosure with appropriate fasteners (e. g. screws and anchors; bolts and locking nuts, etc.) which are compatible with the mounting surface and are of sufficient length/construction to ensure a secure mount (Fig. 4, pg. 7).

Pole Mount: refer to page 7.

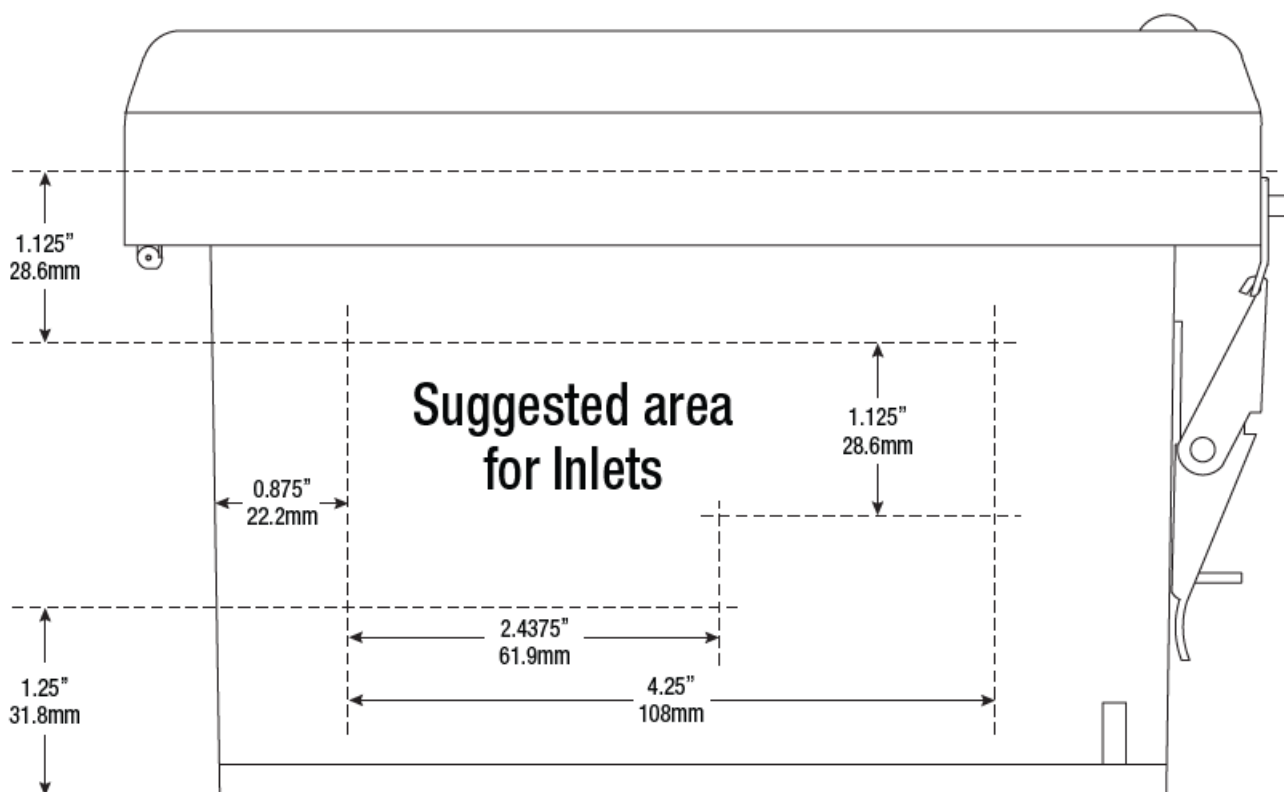
Note: All inlets for conduit fittings should be on the bottom of the enclosure.

7. Mount circuit board in an enclosure with hardware.
8. To facilitate wire entry utilize weather-tight NEMA-rated connectors (supplied), bushings and cable.
9. Connect the structured cable from UL Listed ethernet switch or video server to RJ45 jack marked [IN] on NetWay1DWP/NetWay1DWPH (Fig. 3, pg. 5).
10. Connect structured cable from camera/device to RJ45 jack marked [OUT] on NetWay1DWP/NetWay1DWPH/ (Fig. 3, pg. 5).
11. Switch circuit breaker to the ON position.

Technical Specifications

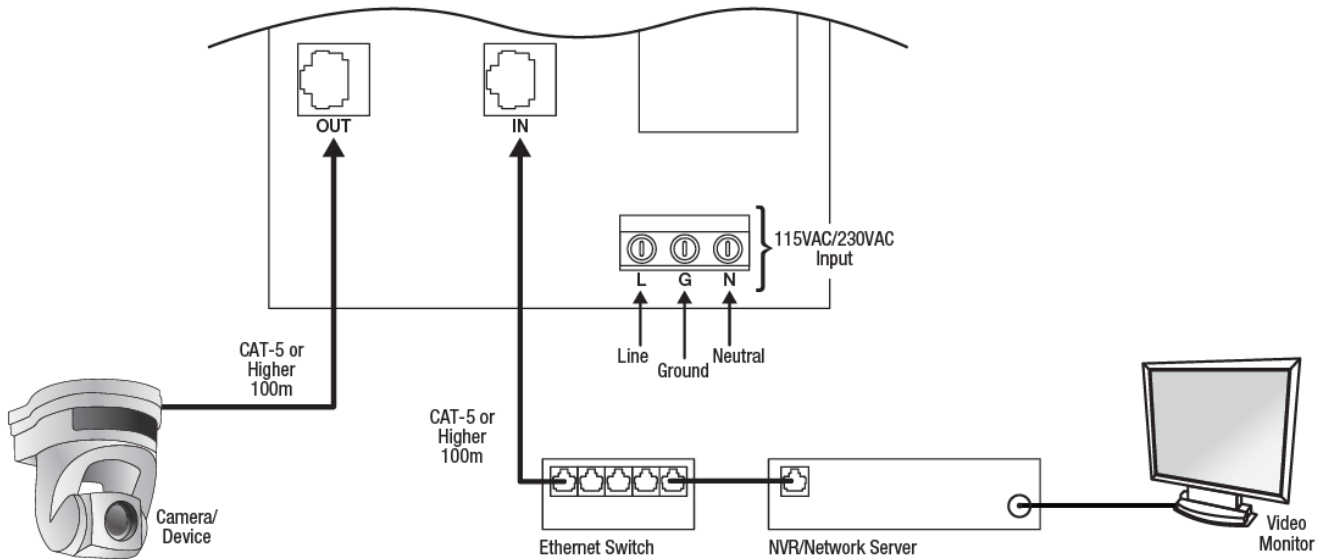
| Parameter | Description |
|--------------------------|--|
| Number of Ports | One (1) Hi-PoE (60W) or IEEE 802.3at (30W) and IEEE 802.3af (15W) compliant. |
| Input Power Requirements | 115VAC, 60Hz, 1.2A or 230VAC, 50/60Hz, 0.75A. |
| Environmental Conditions | <p>Operating Ambient Temperature:</p> <p>30W: 70°C (158°F).</p> <p>60W: 55°C (131°F).</p> <p>Storage Temperature: – 30°C to 85°C (– 22°F to 185°F).</p> <p>Relative humidity: 20 to 85%, non-condensing.</p> <p>Operating Altitude: – 304.8 to 2,000m.</p> |
| Regulatory Compliance | <p>UL 60950-1 Information Technology Equipment.</p> <p>UL 60950-22 Information Technology Equipment to be installed Outdoors.</p> <p>CE European Conformity.</p> |
| Weights (approx.) | Product: 3.7 lb. (1.68 kg) Shipping: 5 lb. (2.27 kg) |

Fig. 2 – Bottom of enclosure



Typical Applications

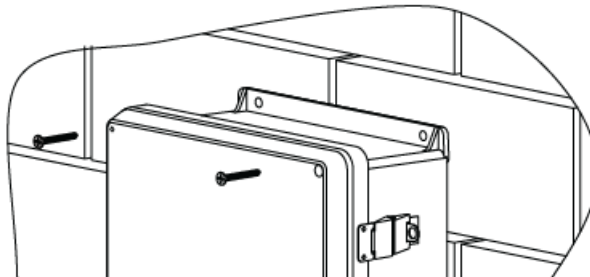
Fig. 3



Wall Mount Installation

Place unit at desired location and secure with mounting screws (not included) (Fig. 4, pg. 7).

Fig. 4



Pole Mounting Using Optional Pole Mount Kit PMK1 (not included)

This installation should be made by qualified service personnel. This product contains no serviceable parts. PMK1 is intended for use with Altronix outdoor rated power supplies or accessories housed in WP1, WP2, WP3 and WP4 enclosures. Brackets are designed for use with the Wormgear Quick Release Straps (two included).

1. Thread one (1) wormgear quick release strap through the slots on the back of a mounting bracket (Fig. 5, pg. 7).
2. Once the desired height of the top Pole Mount bracket is achieved, tighten the straps down by sliding open end of the strap through the locking mechanism on the strap, then tighten the screw with flat head screwdriver or 5/16" hex socket driver (Fig. 6, pg. 7 and Fig. 8, pg. 7).

Fig. 5

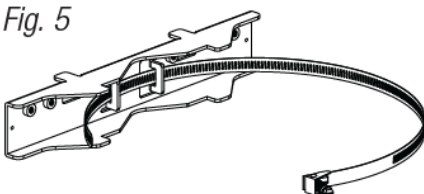


Fig. 6

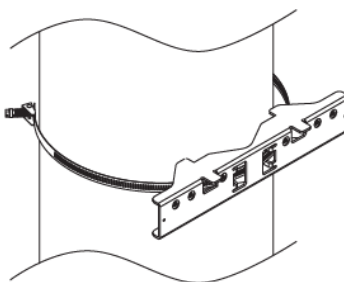
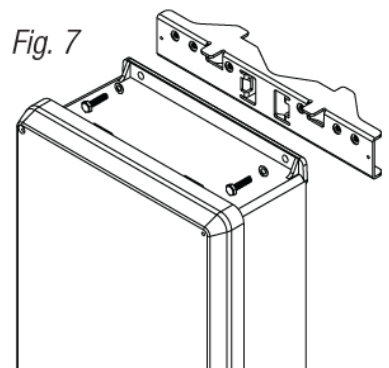


Fig. 7



3. Attach the bottom bracket to the enclosure by inserting bolts through the flange of the enclosure and into the bracket, tightening bolts with a 7/16" hex socket (Fig. 7, pg. 7).

4. Thread the second wormgear quick release strap through the slots on the back of the bottom mounting bracket (Fig. 5, pg. 8).
5. Mount enclosure onto the top bracket by inserting bolts through flange of the enclosure and into the bracket, tightening bolts with a 7/16" hex socket (Fig. 7, pg. 7).
6. Tighten the straps of the bottom bracket down by sliding the open end of the strap through the locking mechanism on the strap, then tighten screw with flat head screwdriver or 5/16" hex socket driver (Fig. 5, pg. 7).
7. Clip excess straps.

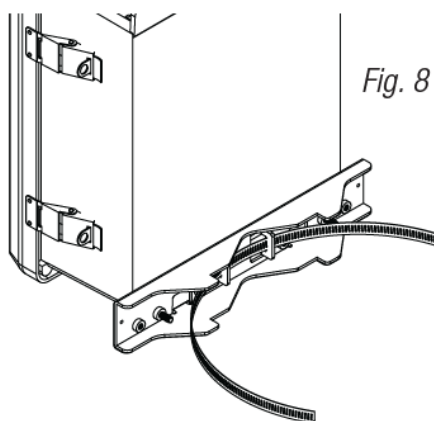


Fig. 9
2" to 8" (50.8mm to 203.2mm)
diameter round pole

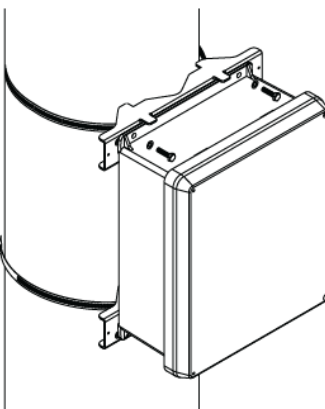
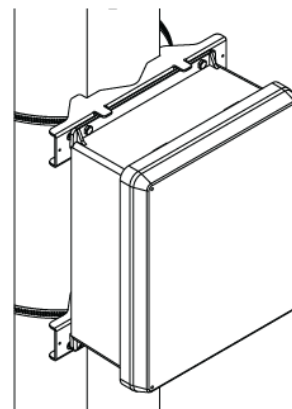
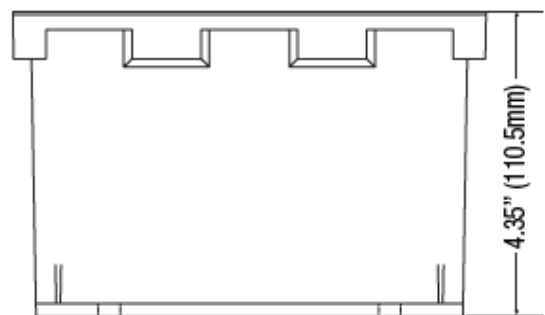
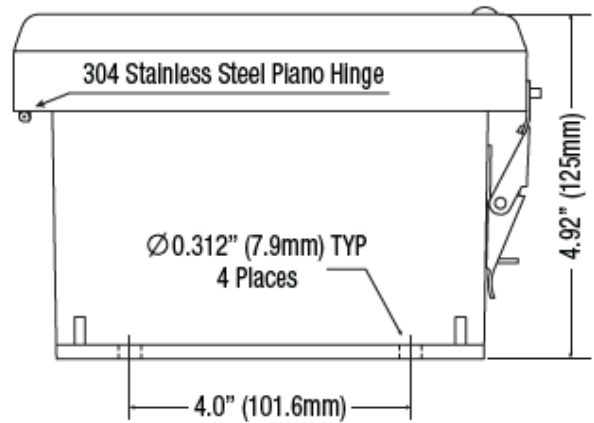
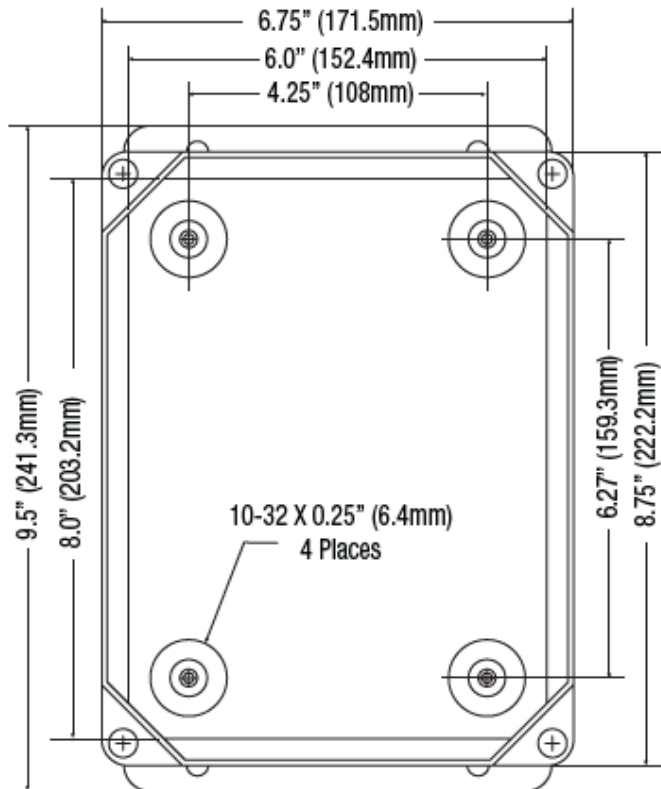
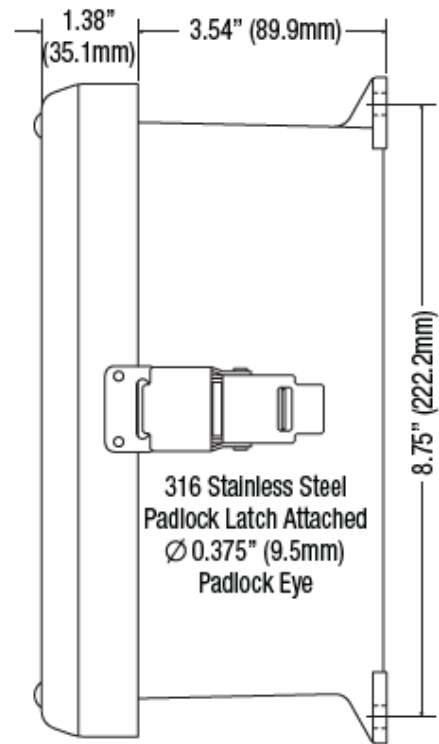
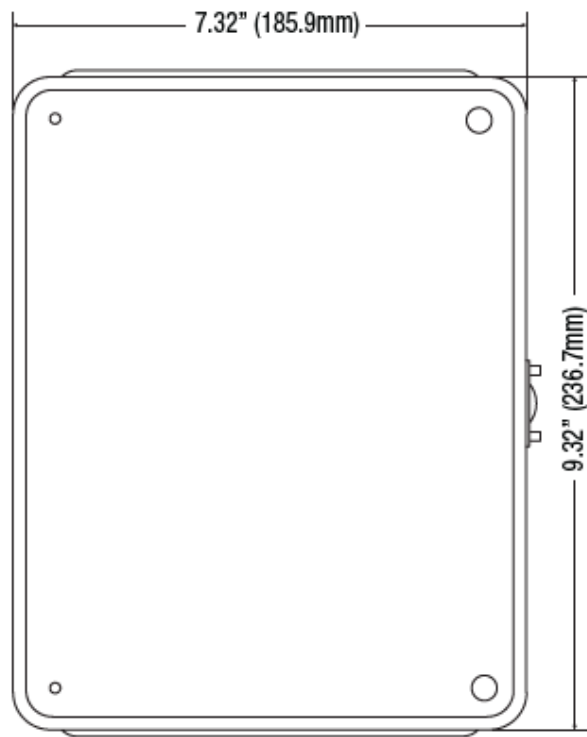


Fig. 9a
5" (127mm) square pole



Mechanical Drawing and Dimensions (H x W x D approx.)

9.5" x 7.32" x 4.92" (241.3mm x 185.9mm x 125mm)



Documents / Resources

